

Data Path : Z:\pestpcbsrv\HPCHEM1\ECD_S\Data\PS042325\
 Data File : PS029922.D
 Signal(s) : Signal #1: ECD1A.ch Signal #2: ECD2B.ch
 Acq On : 23 Apr 2025 12:13
 Operator : AR\AJ
 Sample : HSTDICC1000
 Misc :
 ALS Vial : 6 Sample Multiplier: 1

Instrument :
 ECD_S
 ClientSampleId :
 HSTDICC1000

Integration File signal 1: autoint1.e
 Integration File signal 2: autoint2.e
 Quant Time: Apr 23 12:41:26 2025
 Quant Method : Z:\pestpcbsrv\HPCHEM1\ECD_S\Method\PS042325.M
 Quant Title : 8080.M
 QLast Update : Wed Apr 23 12:41:18 2025
 Response via : Initial Calibration
 Integrator: ChemStation

Volume Inj. : 1 µl
 Signal #1 Phase : ZB-MR1 Signal #2 Phase: ZB-MR2
 Signal #1 Info : 30M x 0.32mm x0.5 Signal #2 Info : 30M x 0.32mm x 0.25µm

Compound	RT#1	RT#2	Resp#1	Resp#2	ng/ml	ng/ml
System Monitoring Compounds						
4) S 2,4-DCAA	6.941	7.466	2233.7E6	662.0E6	886.503	930.792
Target Compounds						
1) T Dalapon	2.448	2.524	3459.2E6	1450.3E6	829.350	821.672
2) T 3,5-DICHL...	6.145	6.463	3047.9E6	855.5E6	835.452	867.026
3) T 4-Nitroph...	6.731	7.000	1500.3E6	650.1E6	830.199	840.006
5) T DICAMBA	7.118	7.652	8709.4E6	3622.0E6	866.580	923.531
6) T MCPP	7.297	7.761	613.1E6	163.4E6	97.394	94.159
7) T MCPA	7.440	7.992	802.4E6	212.9E6	91.664	89.703
8) T DICHLORPROP	7.798	8.347	2167.0E6	881.3E6	837.398	868.054
9) T 2,4-D	8.018	8.661	2435.4E6	991.5E6	849.738	870.102
10) T Pentachlo...	8.297	9.163	31038.8E6	18517.9E6	864.019	901.215
11) T 2,4,5-TP ...	8.862	9.542	12264.9E6	7478.1E6	869.588	909.959
12) T 2,4,5-T	9.144	9.947	12428.5E6	7054.1E6	868.738	903.059
13) T 2,4-DB	9.702	10.506	2059.3E6	737.5E6	896.524	916.649
14) T DINOSEB	10.866	10.881	8807.7E6	5194.8E6	849.671	883.604
15) T Picloram	10.685	11.921	16510.1E6	21923.5E6	892.660	1757.231 #
16) T DCPA	11.166	11.921	15201.9E6	21923.5E6	876.317	1927.353 #

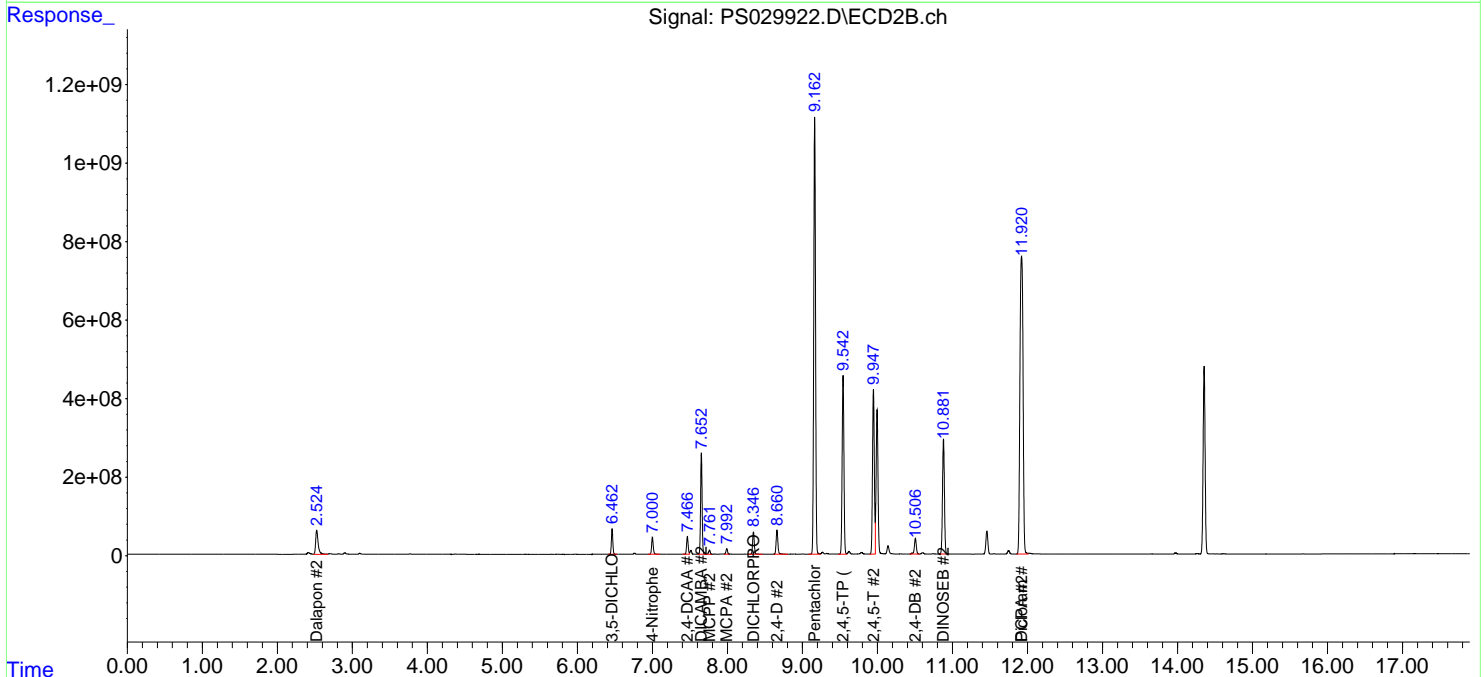
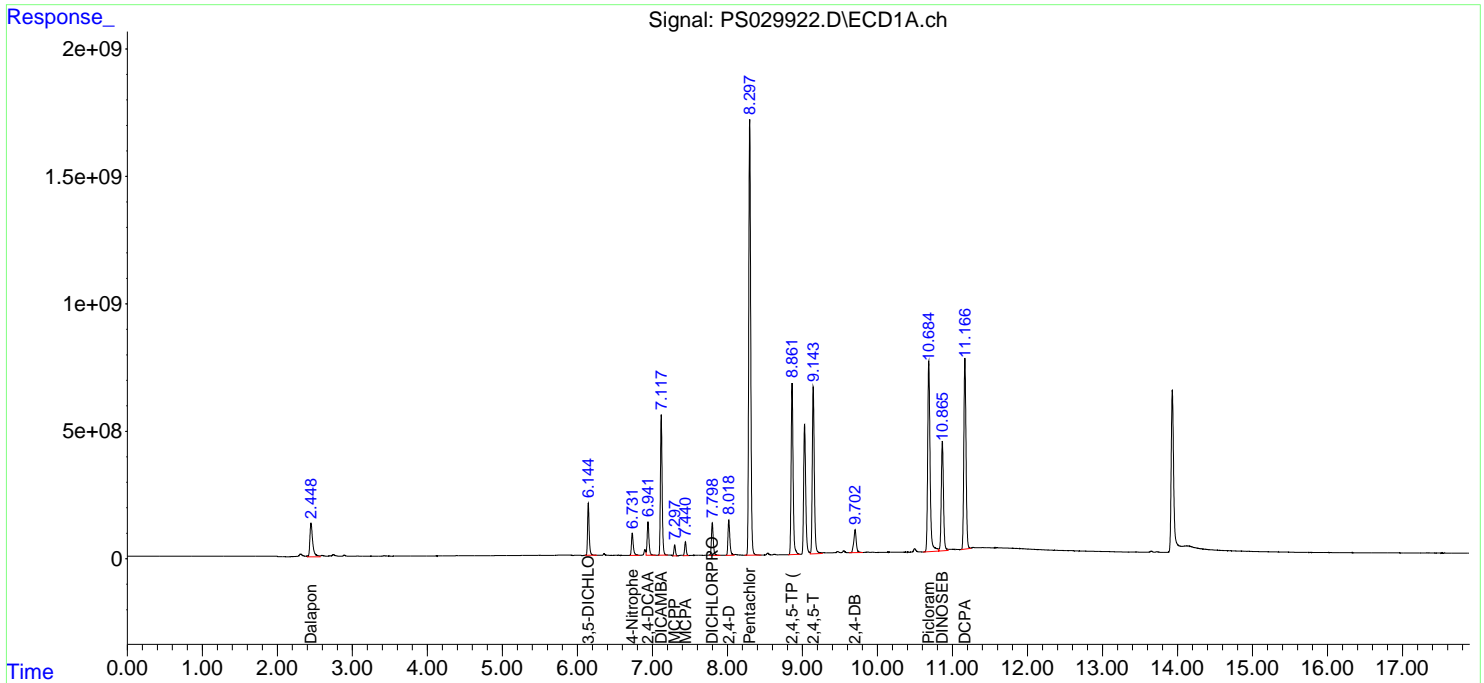
(f)=RT Delta > 1/2 Window (#)=Amounts differ by > 25% (m)=manual int.

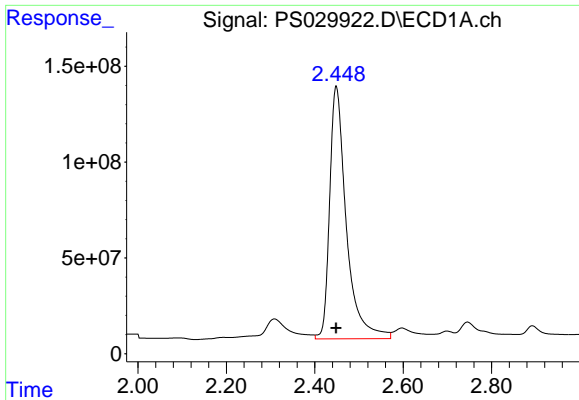
Data Path : Z:\pestpcbsrv\HPCHEM1\ECD_S\Data\PS042325\
 Data File : PS029922.D
 Signal(s) : Signal #1: ECD1A.ch Signal #2: ECD2B.ch
 Acq On : 23 Apr 2025 12:13
 Operator : AR\AJ
 Sample : HSTDICC1000
 Misc :
 ALS Vial : 6 Sample Multiplier: 1

Instrument :
 ECD_S
 ClientSampleId :
 HSTDICC1000

Integration File signal 1: autoint1.e
 Integration File signal 2: autoint2.e
 Quant Time: Apr 23 12:41:26 2025
 Quant Method : Z:\pestpcbsrv\HPCHEM1\ECD_S\Method\PS042325.M
 Quant Title : 8080.M
 QLast Update : Wed Apr 23 12:41:18 2025
 Response via : Initial Calibration
 Integrator: ChemStation

Volume Inj. : 1 µl
 Signal #1 Phase : ZB-MR1 Signal #2 Phase: ZB-MR2
 Signal #1 Info : 30M x 0.32mm x0.5 Signal #2 Info : 30M x 0.32mm x 0.25µm

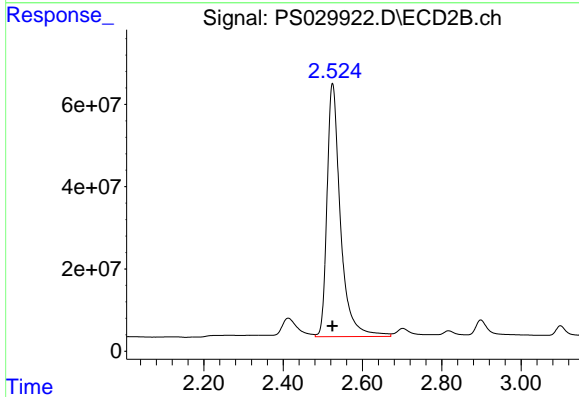




#1 Dalapon

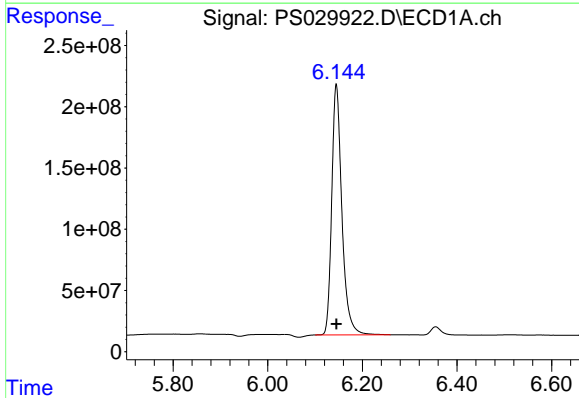
R.T.: 2.448 min
 Delta R.T.: 0.000 min
 Response: 3459192542
 Conc: 829.35 ng/ml

Instrument :
 ECD_S
 ClientSampleId :
 HSTDICC1000



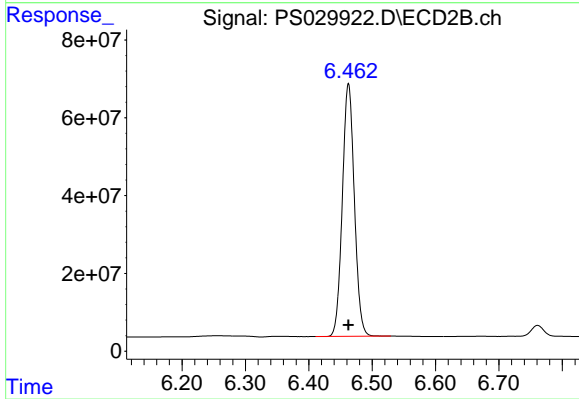
#1 Dalapon

R.T.: 2.524 min
 Delta R.T.: 0.000 min
 Response: 1450275646
 Conc: 821.67 ng/ml



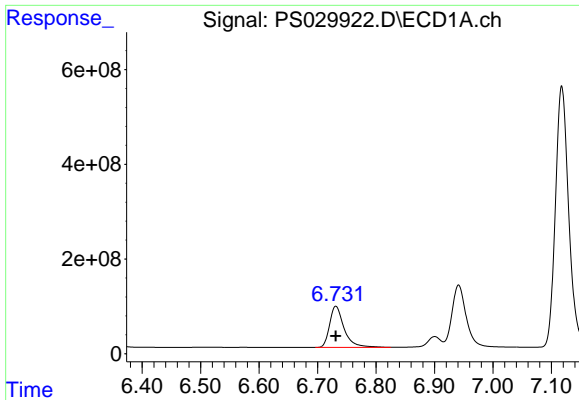
#2 3,5-DICHLOROBENZOIC ACID

R.T.: 6.145 min
 Delta R.T.: 0.000 min
 Response: 3047853600
 Conc: 835.45 ng/ml



#2 3,5-DICHLOROBENZOIC ACID

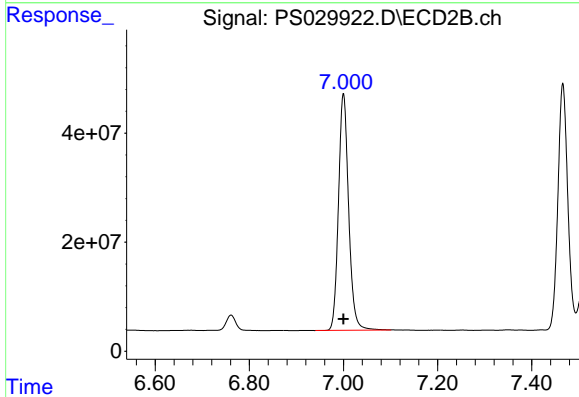
R.T.: 6.463 min
 Delta R.T.: 0.000 min
 Response: 855462143
 Conc: 867.03 ng/ml



#3 4-Nitrophenol

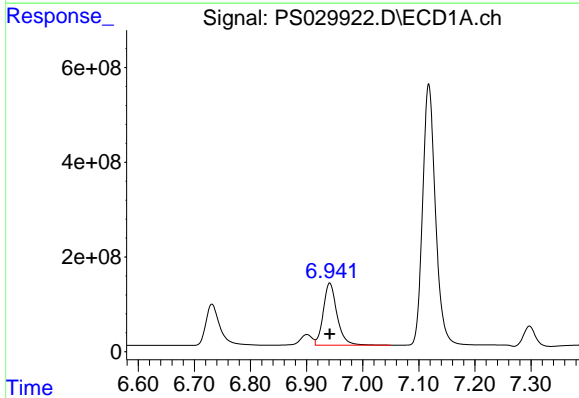
R.T.: 6.731 min
 Delta R.T.: 0.000 min
 Response: 1500313179
 Conc: 830.20 ng/ml

Instrument :
 ECD_S
 ClientSampleId :
 HSTDICC1000



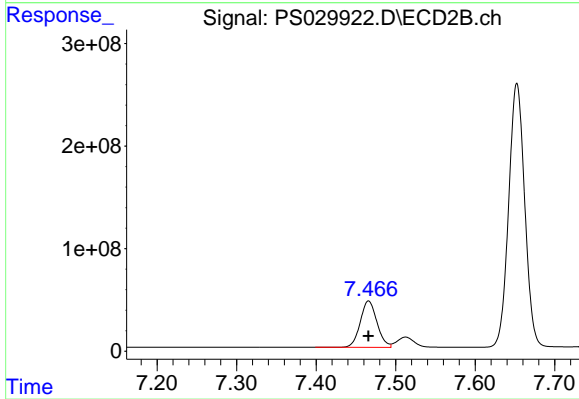
#3 4-Nitrophenol

R.T.: 7.000 min
 Delta R.T.: 0.000 min
 Response: 650145921
 Conc: 840.01 ng/ml



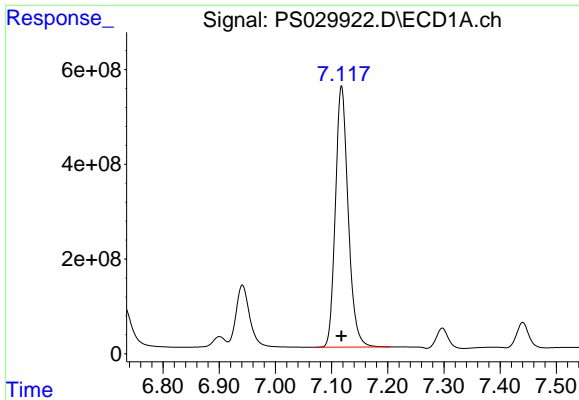
#4 2,4-DCAA

R.T.: 6.941 min
 Delta R.T.: 0.000 min
 Response: 2233667943
 Conc: 886.50 ng/ml



#4 2,4-DCAA

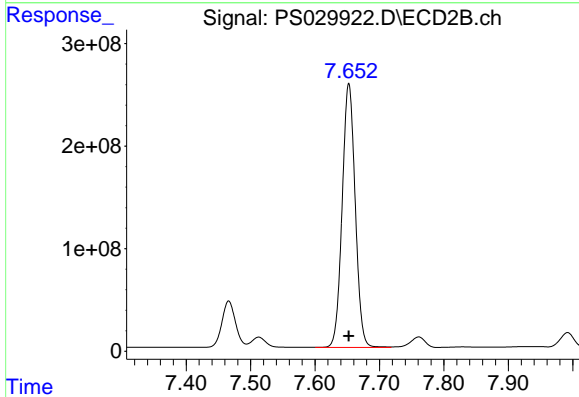
R.T.: 7.466 min
 Delta R.T.: 0.000 min
 Response: 661990920
 Conc: 930.79 ng/ml



#5 DICAMBA

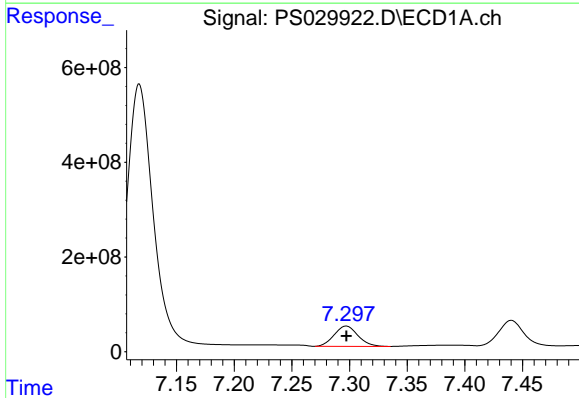
R.T.: 7.118 min
 Delta R.T.: 0.000 min
 Response: 8709449271
 Conc: 866.58 ng/ml

Instrument :
 ECD_S
 ClientSampleId :
 HSTDICC1000



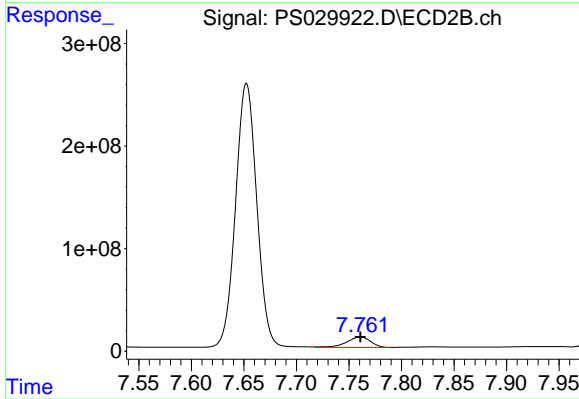
#5 DICAMBA

R.T.: 7.652 min
 Delta R.T.: 0.000 min
 Response: 3622048735
 Conc: 923.53 ng/ml



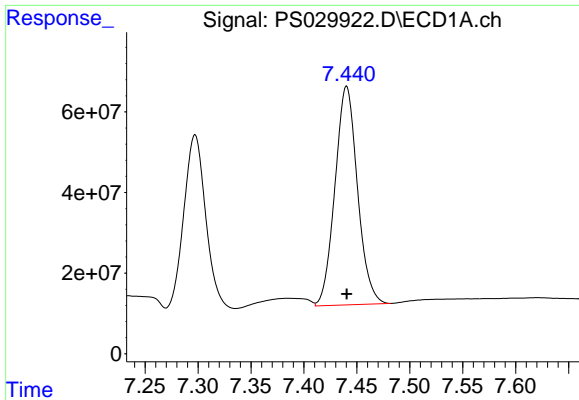
#6 MCPP

R.T.: 7.297 min
 Delta R.T.: 0.000 min
 Response: 613146849
 Conc: 97.39 ug/ml



#6 MCPP

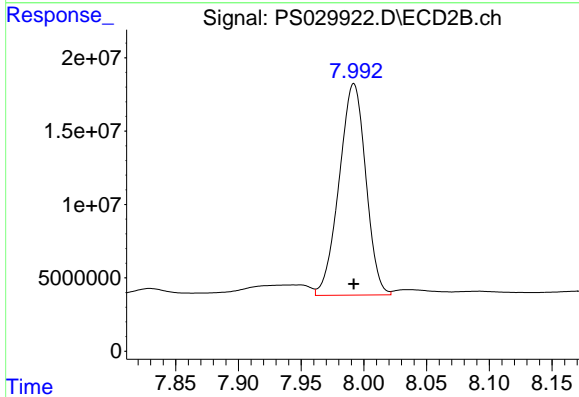
R.T.: 7.761 min
 Delta R.T.: 0.000 min
 Response: 163368164
 Conc: 94.16 ug/ml



#7 MCPA

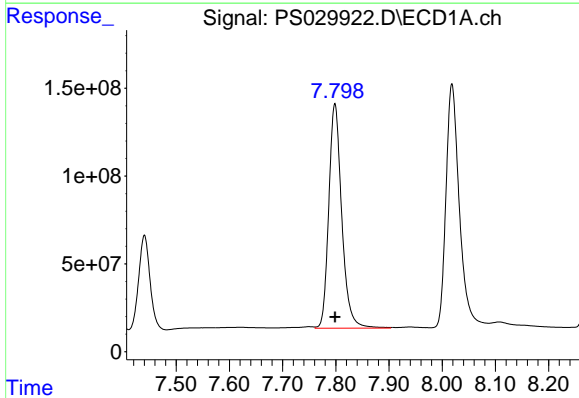
R.T.: 7.440 min
 Delta R.T.: 0.000 min
 Response: 802417459
 Conc: 91.66 ug/ml

Instrument :
 ECD_S
 ClientSampleId :
 HSTDICC1000



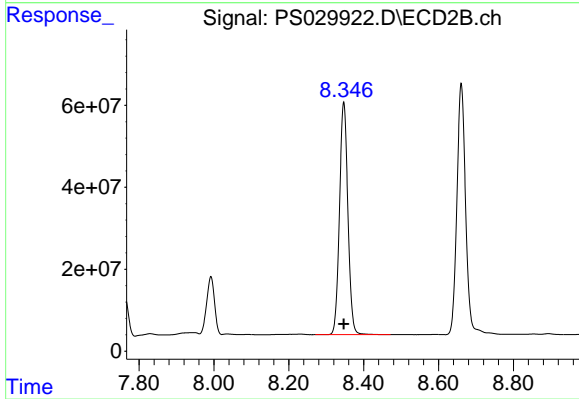
#7 MCPA

R.T.: 7.992 min
 Delta R.T.: 0.000 min
 Response: 212857828
 Conc: 89.70 ug/ml



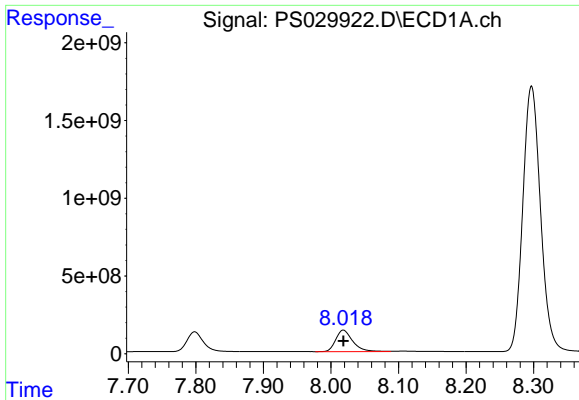
#8 DICHLORPROP

R.T.: 7.798 min
 Delta R.T.: 0.000 min
 Response: 2167004704
 Conc: 837.40 ng/ml



#8 DICHLORPROP

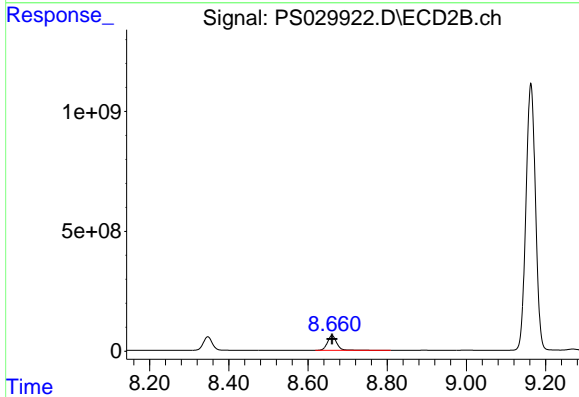
R.T.: 8.347 min
 Delta R.T.: 0.000 min
 Response: 881253779
 Conc: 868.05 ng/ml



#9 2,4-D

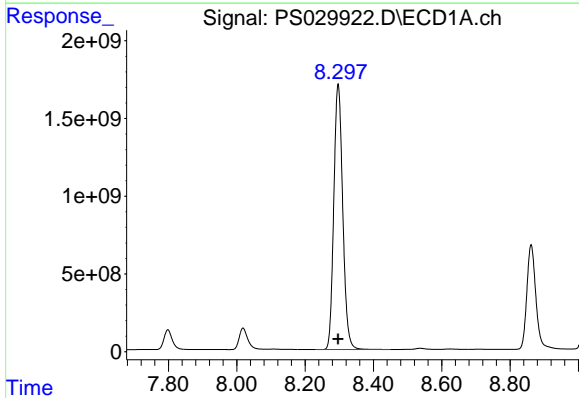
R.T.: 8.018 min
 Delta R.T.: 0.000 min
 Response: 2435353652
 Conc: 849.74 ng/ml

Instrument :
 ECD_S
 ClientSampleId :
 HSTDICC1000



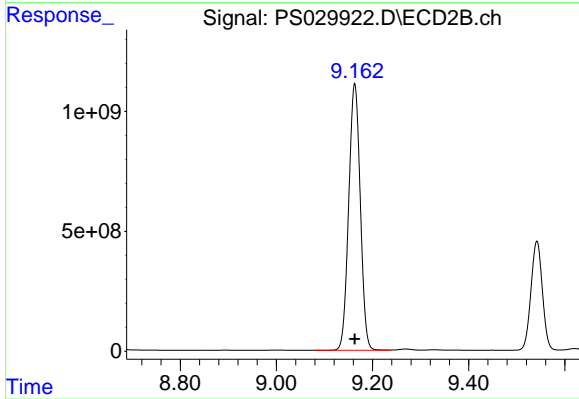
#9 2,4-D

R.T.: 8.661 min
 Delta R.T.: 0.000 min
 Response: 991509756
 Conc: 870.10 ng/ml



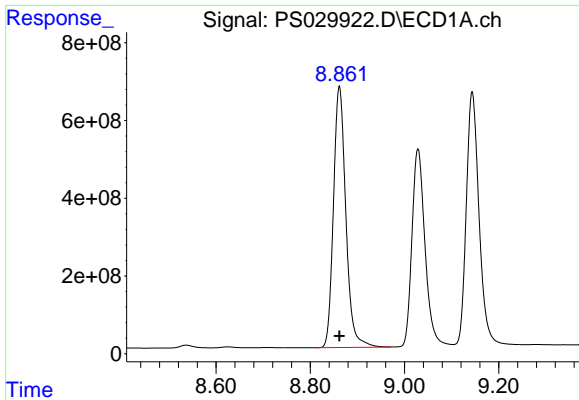
#10 Pentachlorophenol

R.T.: 8.297 min
 Delta R.T.: 0.000 min
 Response: 31038781576
 Conc: 864.02 ng/ml



#10 Pentachlorophenol

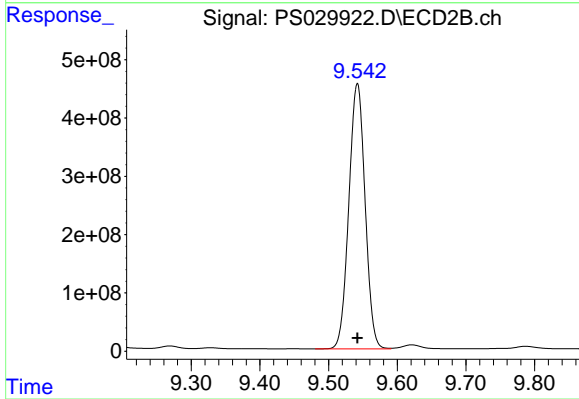
R.T.: 9.163 min
 Delta R.T.: 0.000 min
 Response: 18517872387
 Conc: 901.22 ng/ml



#11 2,4,5-TP (SILVEX)

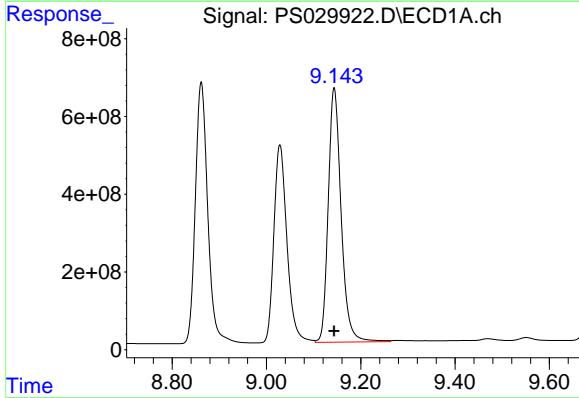
R.T.: 8.862 min
 Delta R.T.: 0.000 min
 Response: 12264939701
 Conc: 869.59 ng/ml

Instrument :
 ECD_S
 ClientSampleId :
 HSTDICC1000



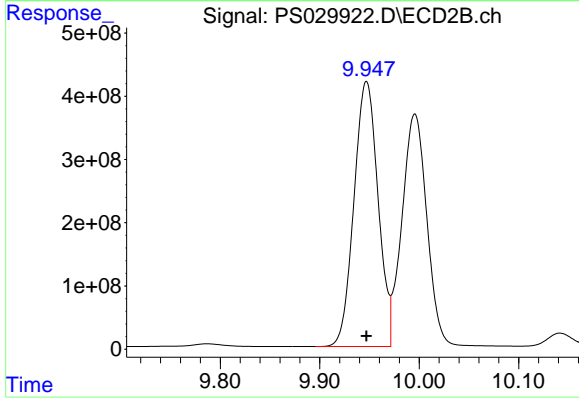
#11 2,4,5-TP (SILVEX)

R.T.: 9.542 min
 Delta R.T.: 0.000 min
 Response: 7478086402
 Conc: 909.96 ng/ml



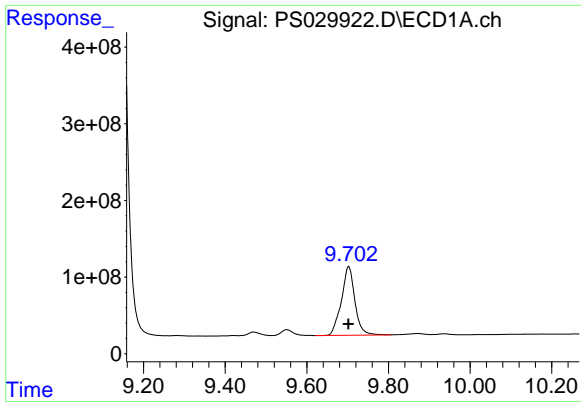
#12 2,4,5-T

R.T.: 9.144 min
 Delta R.T.: 0.000 min
 Response: 12428516949
 Conc: 868.74 ng/ml



#12 2,4,5-T

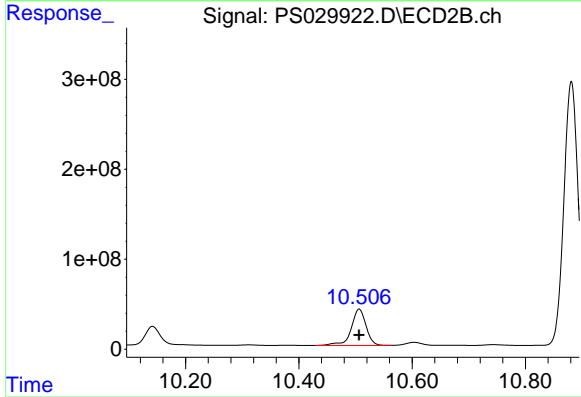
R.T.: 9.947 min
 Delta R.T.: 0.000 min
 Response: 7054117355
 Conc: 903.06 ng/ml



#13 2,4-DB

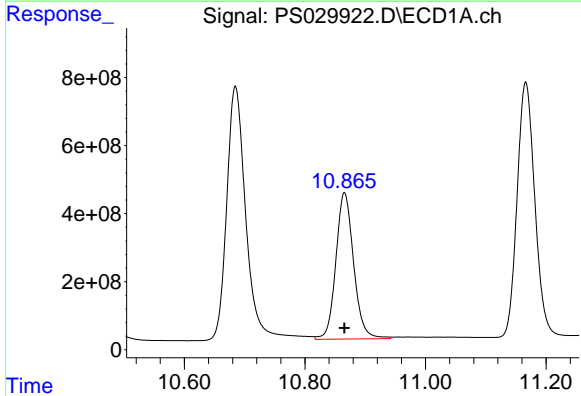
R.T.: 9.702 min
 Delta R.T.: 0.000 min
 Response: 2059257414
 Conc: 896.52 ng/ml

Instrument :
 ECD_S
 ClientSampleId :
 HSTDICC1000



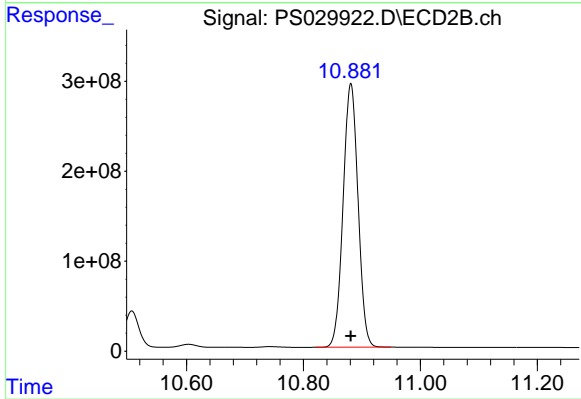
#13 2,4-DB

R.T.: 10.506 min
 Delta R.T.: 0.000 min
 Response: 737501651
 Conc: 916.65 ng/ml



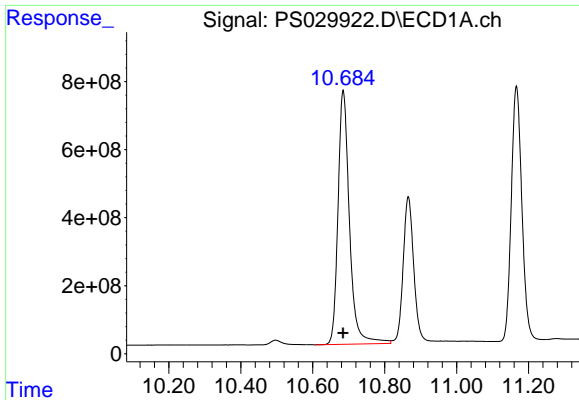
#14 DINOSEB

R.T.: 10.866 min
 Delta R.T.: 0.000 min
 Response: 8807749773
 Conc: 849.67 ng/ml



#14 DINOSEB

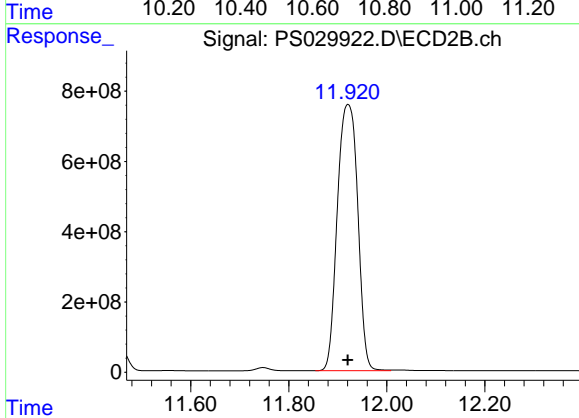
R.T.: 10.881 min
 Delta R.T.: 0.000 min
 Response: 5194780641
 Conc: 883.60 ng/ml



#15 Picloram

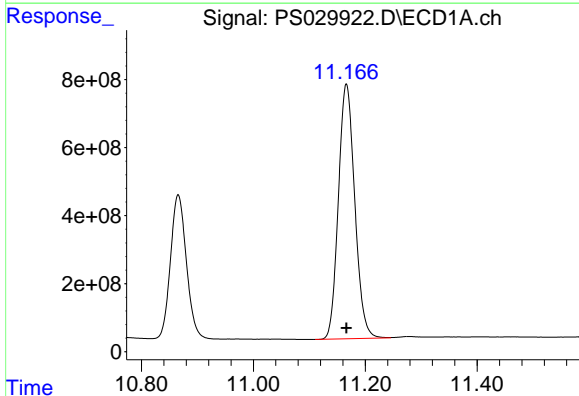
R.T.: 10.685 min
 Delta R.T.: 0.000 min
 Response: 16510101945
 Conc: 892.66 ng/ml

Instrument :
 ECD_S
 ClientSampleId :
 HSTDICC1000



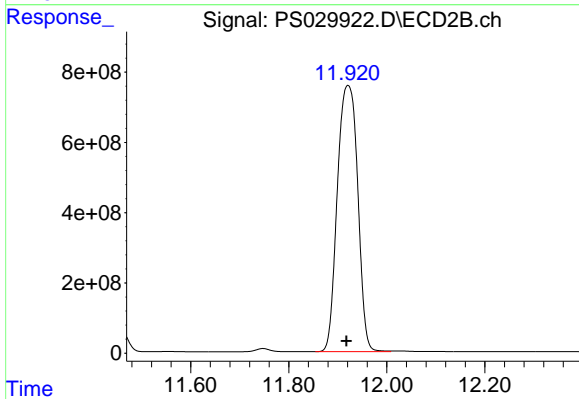
#15 Picloram

R.T.: 11.921 min
 Delta R.T.: 0.000 min
 Response: 21923468689
 Conc: 1757.23 ng/ml



#16 DCPA

R.T.: 11.166 min
 Delta R.T.: 0.000 min
 Response: 15201932980
 Conc: 876.32 ng/ml



#16 DCPA

R.T.: 11.921 min
 Delta R.T.: 0.003 min
 Response: 21923468689
 Conc: 1927.35 ng/ml