

Data Path : Z:\pestpcbsrv\HPCHEM1\ECD_S\Data\PS042325\
 Data File : PS029925.D
 Signal(s) : Signal #1: ECD1A.ch Signal #2: ECD2B.ch
 Acq On : 23 Apr 2025 13:25
 Operator : AR\AJ
 Sample : I.BLK
 Misc :
 ALS Vial : 2 Sample Multiplier: 1

Instrument :
 ECD_S
 ClientSampleId :

Integration File signal 1: autoint1.e
 Integration File signal 2: autoint2.e
 Quant Time: Apr 23 14:10:07 2025
 Quant Method : Z:\pestpcbsrv\HPCHEM1\ECD_S\Method\PS042325.M
 Quant Title : 8080.M
 QLast Update : Wed Apr 23 12:57:40 2025
 Response via : Initial Calibration
 Integrator: ChemStation

Volume Inj. : 1 µl
 Signal #1 Phase : ZB-MR2 Signal #2 Phase: ZB-MR2
 Signal #1 Info : 30M x 0.32mm x0.5 Signal #2 Info : 30M x 0.32mm x 0.25µm

Compound	RT#1	RT#2	Resp#1	Resp#2	ng/ml	ng/ml

System Monitoring Compounds						
4) S 2,4-DCAA	6.942	7.466	1079.7E6	311.6E6	438.691	442.248
Target Compounds						
1) T Dalapon	2.431	2.573f	29809877	6850222	7.279	3.946 #
2) T 3,5-DICHL...	6.150	0.000	472640	0	<MDL	N.D. #
3) T 4-Nitroph...	6.737	0.000	10119627	0	5.675	N.D. #
5) T DICAMBA	7.118	7.648	-344678	2090862	N.D.	<MDL
7) T MCPA	7.437	0.000	525886	0	<MDL	N.D. #
8) T DICHLORPROP	7.800	8.371	4198593	2877766	1.657	2.866 #
10) T Pentachlo...	8.291	0.000	23570365	0	<MDL	N.D. #
11) T 2,4,5-TP ...	8.869	0.000	3386707	0	<MDL	N.D. #
12) T 2,4,5-T	9.171f	9.946	201874	2667209	<MDL	<MDL #
13) T 2,4-DB	9.670f	0.000	17055093	0	7.463	N.D. #
14) T DINOSEB	10.841	0.000	7573893	0	<MDL	N.D. #
15) T Picloram	10.673	11.929	251.2E6	32097572	13.705	2.613 #
16) T DCPA	11.145	11.929	25249031	32097572	1.483	2.848 #

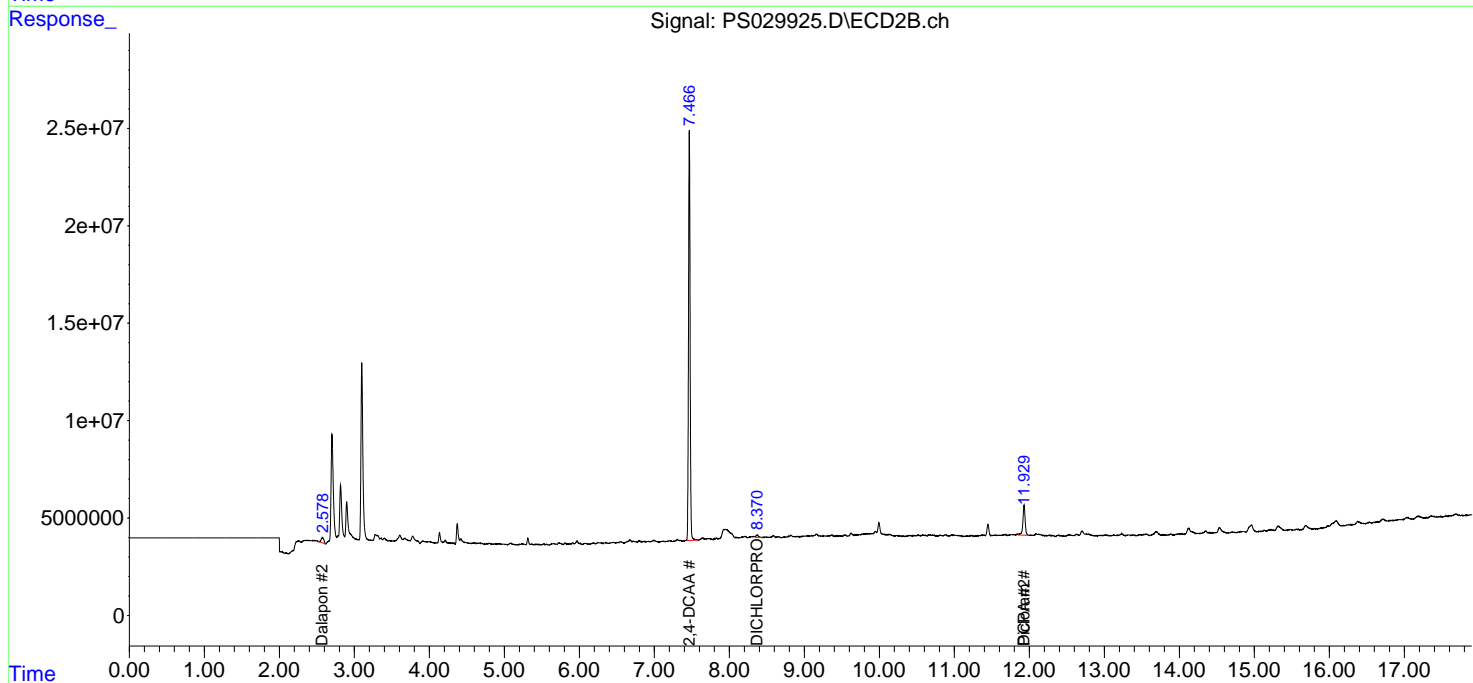
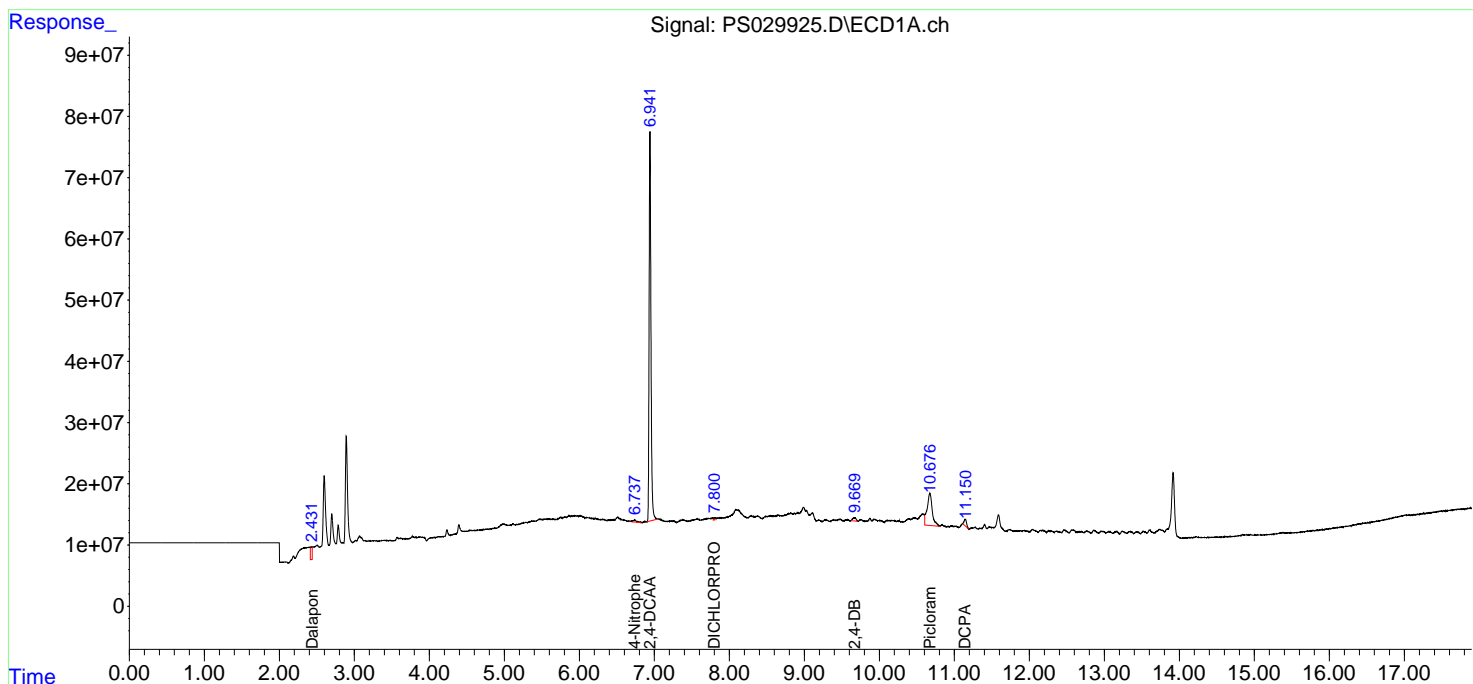
(f)=RT Delta > 1/2 Window (#)=Amounts differ by > 25% (m)=manual int.

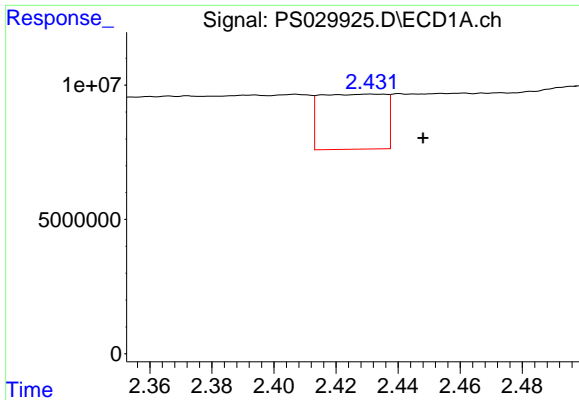
Data Path : Z:\pestpcbsrv\HPCHEM1\ECD_S\Data\PS042325\
 Data File : PS029925.D
 Signal(s) : Signal #1: ECD1A.ch Signal #2: ECD2B.ch
 Acq On : 23 Apr 2025 13:25
 Operator : AR\AJ
 Sample : I.BLK
 Misc :
 ALS Vial : 2 Sample Multiplier: 1

Instrument :
 ECD_S
 ClientSampleId :

Integration File signal 1: autoint1.e
 Integration File signal 2: autoint2.e
 Quant Time: Apr 23 14:10:07 2025
 Quant Method : Z:\pestpcbsrv\HPCHEM1\ECD_S\Method\PS042325.M
 Quant Title : 8080.M
 QLast Update : Wed Apr 23 12:57:40 2025
 Response via : Initial Calibration
 Integrator: ChemStation

Volume Inj. : 1 µl
 Signal #1 Phase : ZB-MR1 Signal #2 Phase: ZB-MR2
 Signal #1 Info : 30M x 0.32mm x0.5 Signal #2 Info : 30M x 0.32mm x 0.25µm

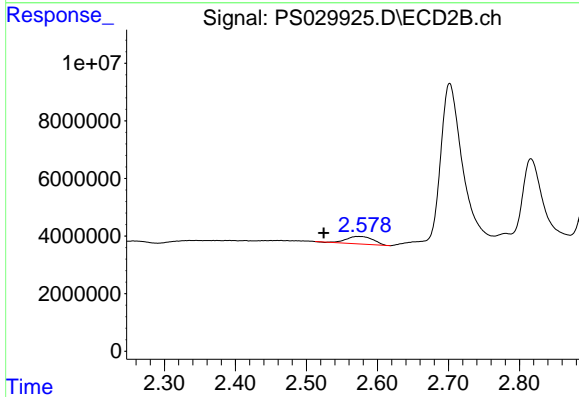




#1 Dalapon

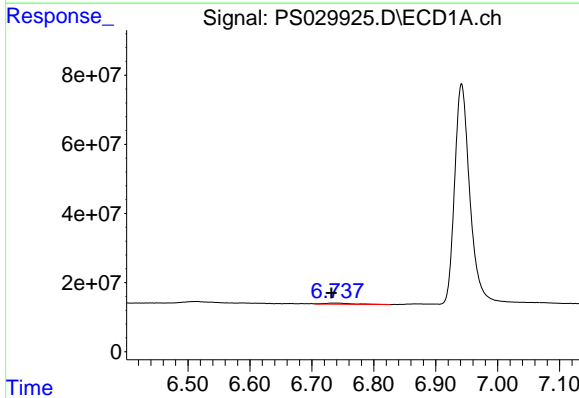
R.T.: 2.431 min
 Delta R.T.: -0.017 min
 Response: 29809877
 Conc: 7.28 ng/ml

Instrument :
 ECD_S
 ClientSampleId :



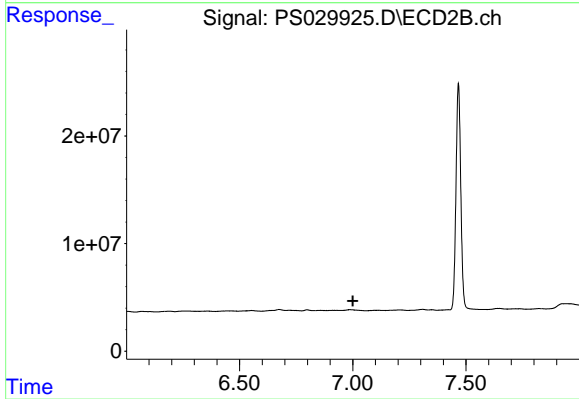
#1 Dalapon

R.T.: 2.573 min
 Delta R.T.: 0.048 min
 Response: 6850222
 Conc: 3.95 ng/ml



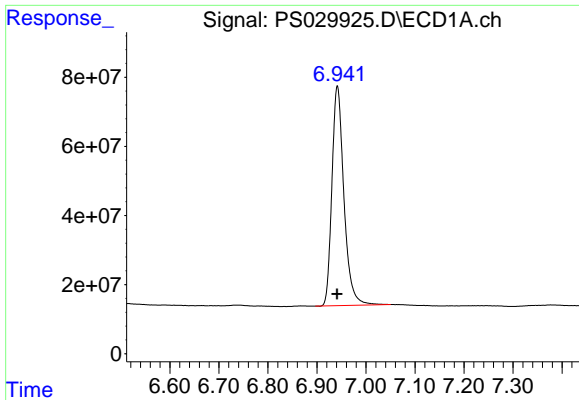
#3 4-Nitrophenol

R.T.: 6.737 min
 Delta R.T.: 0.006 min
 Response: 10119627
 Conc: 5.67 ng/ml



#3 4-Nitrophenol

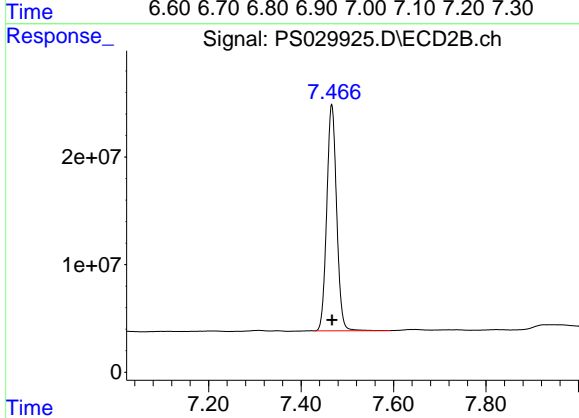
R.T.: 0.000 min
 Exp R.T. : 7.001 min
 Response: 0
 Conc: N.D.



#4 2,4-DCAA

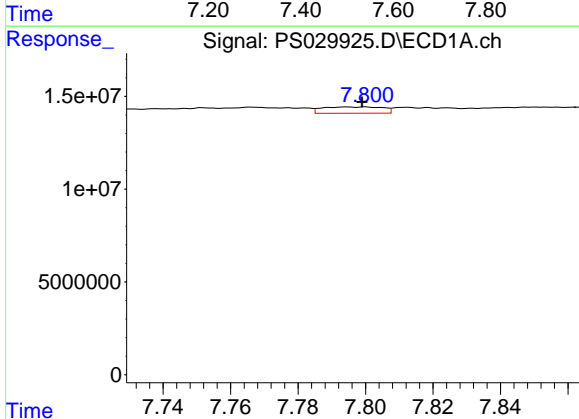
R.T.: 6.942 min
 Delta R.T.: 0.000 min
 Response: 1079653315
 Conc: 438.69 ng/ml

Instrument :
 ECD_S
 ClientSampleId :



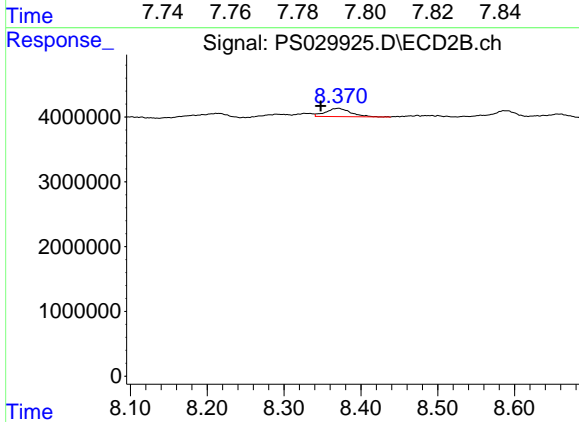
#4 2,4-DCAA

R.T.: 7.466 min
 Delta R.T.: 0.000 min
 Response: 311571087
 Conc: 442.25 ng/ml



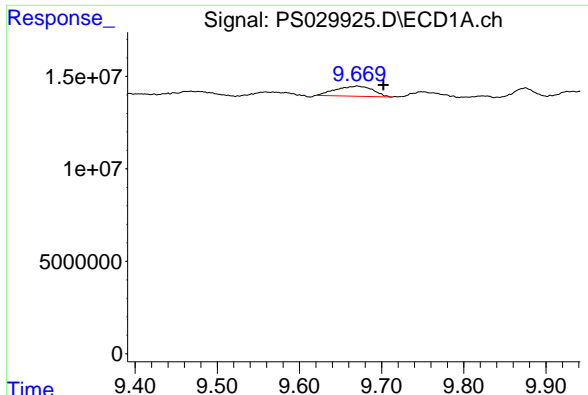
#8 DICHLORPROP

R.T.: 7.800 min
 Delta R.T.: 0.000 min
 Response: 4198593
 Conc: 1.66 ng/ml



#8 DICHLORPROP

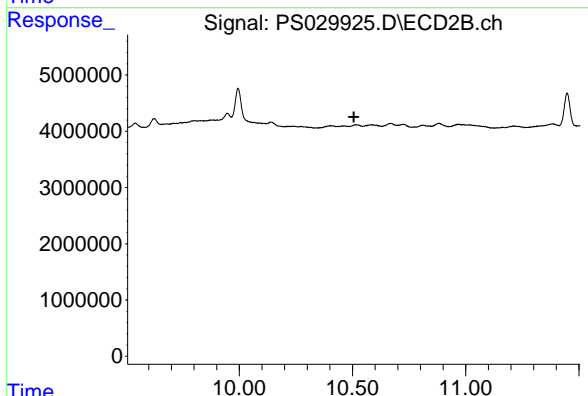
R.T.: 8.371 min
 Delta R.T.: 0.023 min
 Response: 2877766
 Conc: 2.87 ng/ml



#13 2,4-DB

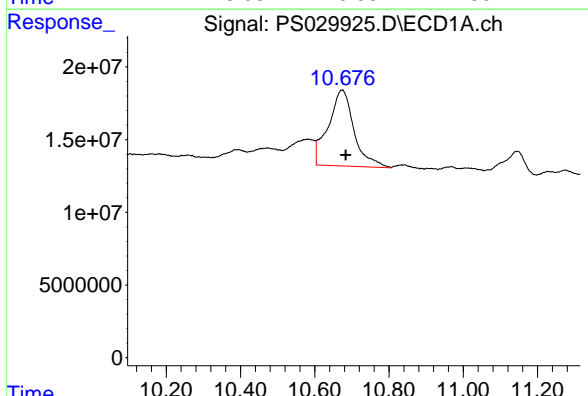
R.T.: 9.670 min
 Delta R.T.: -0.032 min
 Response: 17055093
 Conc: 7.46 ng/ml

Instrument :
 ECD_S
 ClientSampleId :



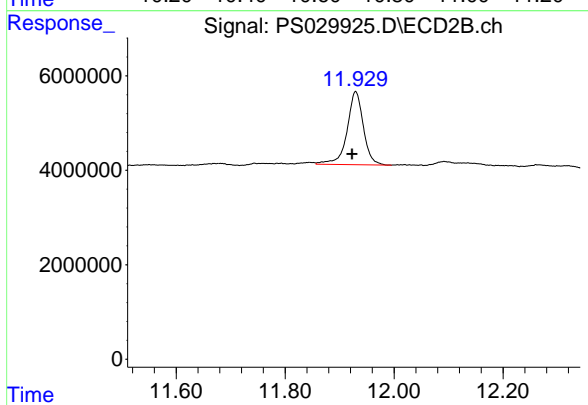
#13 2,4-DB

R.T.: 0.000 min
 Exp R.T. : 10.507 min
 Response: 0
 Conc: N.D.



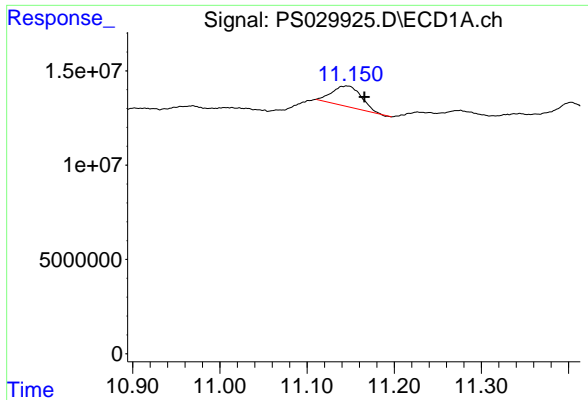
#15 Picloram

R.T.: 10.673 min
 Delta R.T.: -0.010 min
 Response: 251226642
 Conc: 13.71 ng/ml



#15 Picloram

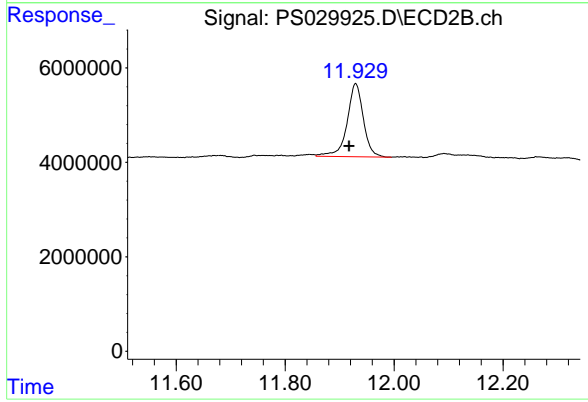
R.T.: 11.929 min
 Delta R.T.: 0.006 min
 Response: 32097572
 Conc: 2.61 ng/ml



#16 DCPA

R.T.: 11.145 min
Delta R.T.: -0.021 min
Response: 25249031
Conc: 1.48 ng/ml

Instrument :
ECD_S
ClientSampleId :



#16 DCPA

R.T.: 11.929 min
Delta R.T.: 0.012 min
Response: 32097572
Conc: 2.85 ng/ml