

Data Path : Z:\pestpcbsrv\HPCHEM1\ECD\_S\Data\PS042420\  
 Data File : PS010000.D  
 Signal(s) : Signal #1: ECD1A.ch Signal #2: ECD2B.ch  
 Acq On : 24 Apr 2020 15:13  
 Operator : DD\AJ  
 Sample : L2353-01  
 Misc :  
 ALS Vial : 4 Sample Multiplier: 1

**Instrument :**  
 ECD\_S  
**ClientSampled :**  
 VNJ-240

**Manual Integrations**  
**APPROVED**  
 Sohil  
 4/27/2020 3:02:25 PM

Integration File signal 1: autoint1.e  
 Integration File signal 2: autoint2.e  
 Quant Time: Apr 24 15:42:09 2020  
 Quant Method : Z:\pestpcbsrv\HPCHEM1\ECD\_S\Method\PS040820.M  
 Quant Title : 8080.M  
 QLast Update : Thu Apr 09 05:27:48 2020  
 Response via : Initial Calibration  
 Integrator: ChemStation

Volume Inj. : 2 µl  
 Signal #1 Phase : Rtx-CLPesticides Signal #2 Phase: Rtx-CLPesticides2  
 Signal #1 Info : 30M x 0.32mm x0.5 Signal #2 Info : 30M x 0.32mm x 0.25µm

Compound	RT#1	RT#2	Resp#1	Resp#2	ng/ml	ng/ml
-----						
System Monitoring Compounds						
4) S 2,4-DCAA	7.235	6.922	220.7E6	231.0E6	365.452m	466.500 #

Target Compounds

(f)=RT Delta > 1/2 Window (#)=Amounts differ by > 25% (m)=manual int.

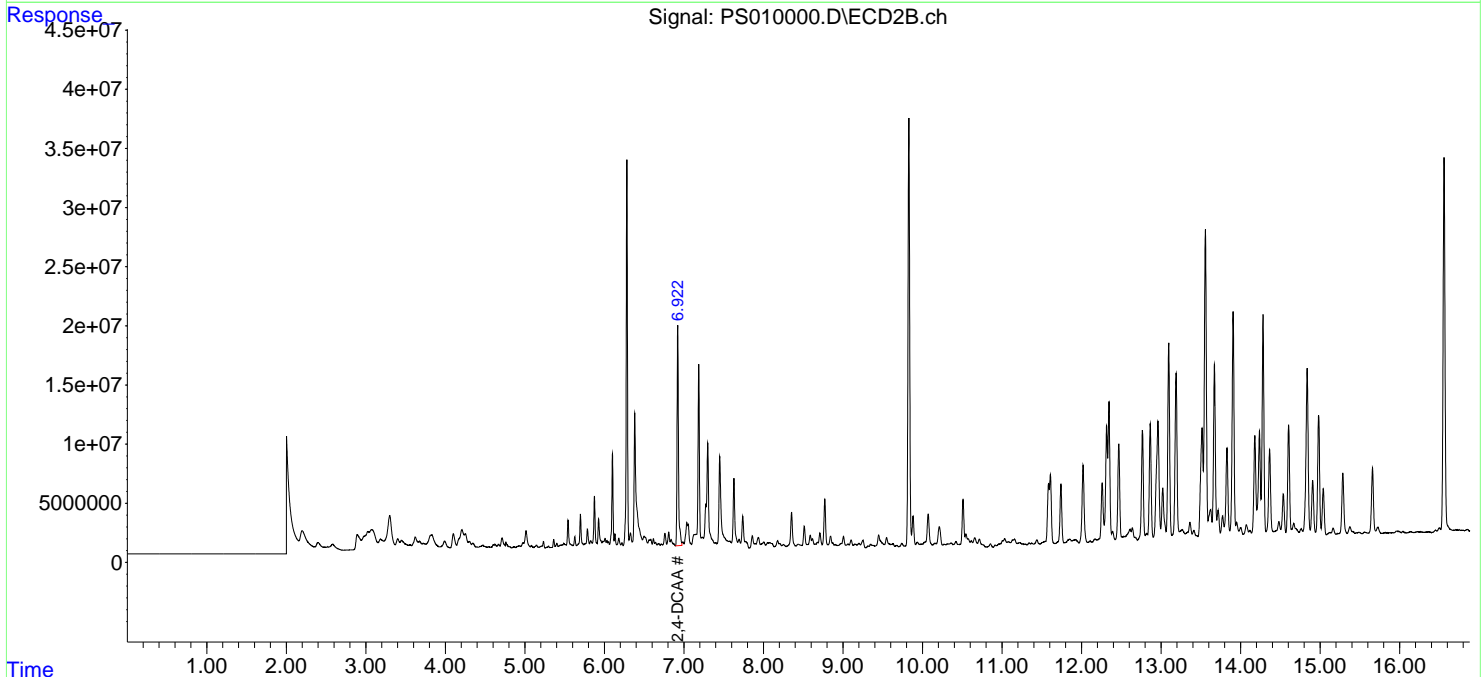
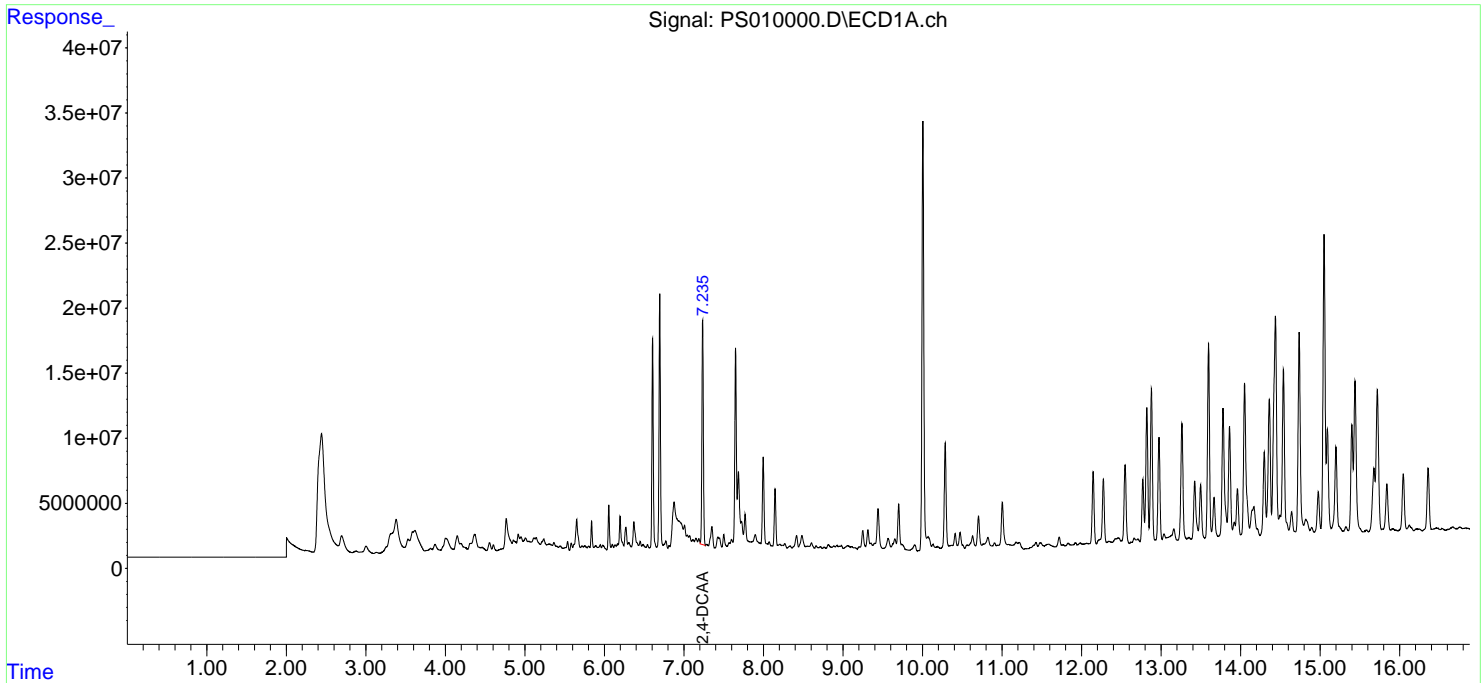
Data Path : Z:\pestpcbsrv\HPCHEM1\ECD\_S\Data\PS042420\  
Data File : PS010000.D  
Signal(s) : Signal #1: ECD1A.ch Signal #2: ECD2B.ch  
Acq On : 24 Apr 2020 15:13  
Operator : DD\AJ  
Sample : L2353-01  
Misc :  
ALS Vial : 4 Sample Multiplier: 1

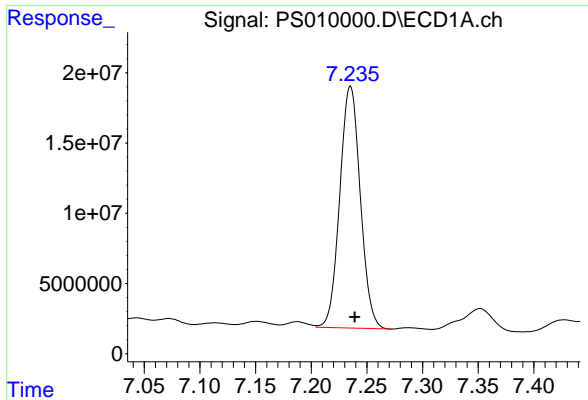
Instrument :  
ECD\_S  
ClientSampled :  
VNJ-240

Manual Integrations  
APPROVED  
Sohil  
4/27/2020 3:02:25 PM

Integration File signal 1: autoint1.e  
Integration File signal 2: autoint2.e  
Quant Time: Apr 24 15:42:09 2020  
Quant Method : Z:\pestpcbsrv\HPCHEM1\ECD\_S\Method\PS040820.M  
Quant Title : 8080.M  
QLast Update : Thu Apr 09 05:27:48 2020  
Response via : Initial Calibration  
Integrator: ChemStation

Volume Inj. : 2 µl  
Signal #1 Phase : Rtx-CLPesticides Signal #2 Phase: Rtx-CLPesticides2  
Signal #1 Info : 30M x 0.32mm x 0.5 Signal #2 Info : 30M x 0.32mm x 0.25µm





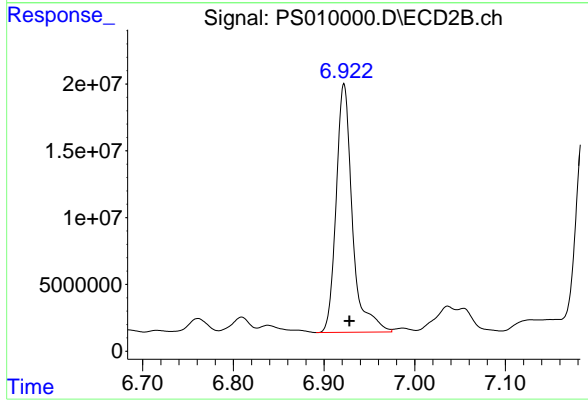
#4 2,4-DCAA

R.T.: 7.235 min  
Delta R.T.: -0.004 min  
Response: 220665458  
Conc: 365.45 ng/ml m

Instrument :  
ECD\_S  
ClientSampled :  
VNJ-240

Manual Integrations  
APPROVED

Sohil  
4/27/2020 3:02:25 PM



#4 2,4-DCAA

R.T.: 6.922 min  
Delta R.T.: -0.006 min  
Response: 231034174  
Conc: 466.50 ng/ml