

Data Path : Z:\pestpcbsrv\HPCHEM1\ECD\_S\Data\PS042722\  
 Data File : PS019156.D  
 Signal(s) : Signal #1: ECD1A.ch Signal #2: ECD2B.ch  
 Acq On : 27 Apr 2022 13:50  
 Operator : AJ\MA  
 Sample : HSTDCCC750  
 Misc :  
 ALS Vial : 3 Sample Multiplier: 1

Instrument :  
 ECD\_S  
 ClientSampleId :

Integration File signal 1: autoint1.e  
 Integration File signal 2: autoint2.e  
 Quant Time: Apr 28 01:49:11 2022  
 Quant Method : Z:\pestpcbsrv\HPCHEM1\ECD\_S\Method\PS041822.M  
 Quant Title : 8080.M  
 QLast Update : Mon Apr 18 17:28:16 2022  
 Response via : Initial Calibration  
 Integrator: ChemStation

Volume Inj. : 2 µl  
 Signal #1 Phase : Rtx-CLPesticides Signal #2 Phase: Rtx-CLPesticides2  
 Signal #1 Info : 30M x 0.32mm x0.5 Signal #2 Info : 30M x 0.32mm x 0.25µm

	Compound	RT#1	RT#2	Resp#1	Resp#2	ng/ml	ng/ml
-----							
System Monitoring Compounds							
4) S	2,4-DCAA	7.224	6.796	2520.5E6	529.6E6	673.918	729.535
Target Compounds							
1) T	Dalapon	3.023	2.521	2766.7E6	555.6E6	616.416	598.365
2) T	3,5-DICHL...	6.433	5.972	3339.4E6	753.2E6	671.554	672.241
3) T	4-Nitroph...	7.055	6.412	1107.6E6	289.3E6	845.771	727.795
5) T	DICAMBA	7.415	6.962	9498.1E6	2239.5E6	688.203	692.149
6) T	MCP P	7.586	7.060	759.1E6	175.9E6	69.674	68.412
7) T	MCPA	7.736	7.274	1015.5E6	249.4E6	67.390	68.695
8) T	DICHLORPROP	8.111	7.585	2332.7E6	572.0E6	654.941	684.535
9) T	2,4-D	8.341	7.878	2778.0E6	670.5E6	676.911	706.424
10) T	Pentachlo...	8.649	8.305	30848.3E6	7551.8E6	668.993	698.622
11) T	2,4,5-TP ...	9.202	8.667	12708.7E6	3294.4E6	638.178	699.670
12) T	2,4,5-T	9.488	9.045	12739.8E6	3079.8E6	641.120	713.175
13) T	2,4-DB	10.042	9.552	2379.0E6	398.7E6	675.534	719.274
14) T	DINOSEB	11.199	9.878	9800.0E6	2274.7E6	640.492	678.450
15) T	Picloram	11.028	10.864	17871.6E6	4050.6E6	666.934	684.115
16) T	DCPA	11.467	10.809	15280.7E6	4011.4E6	665.956	700.840

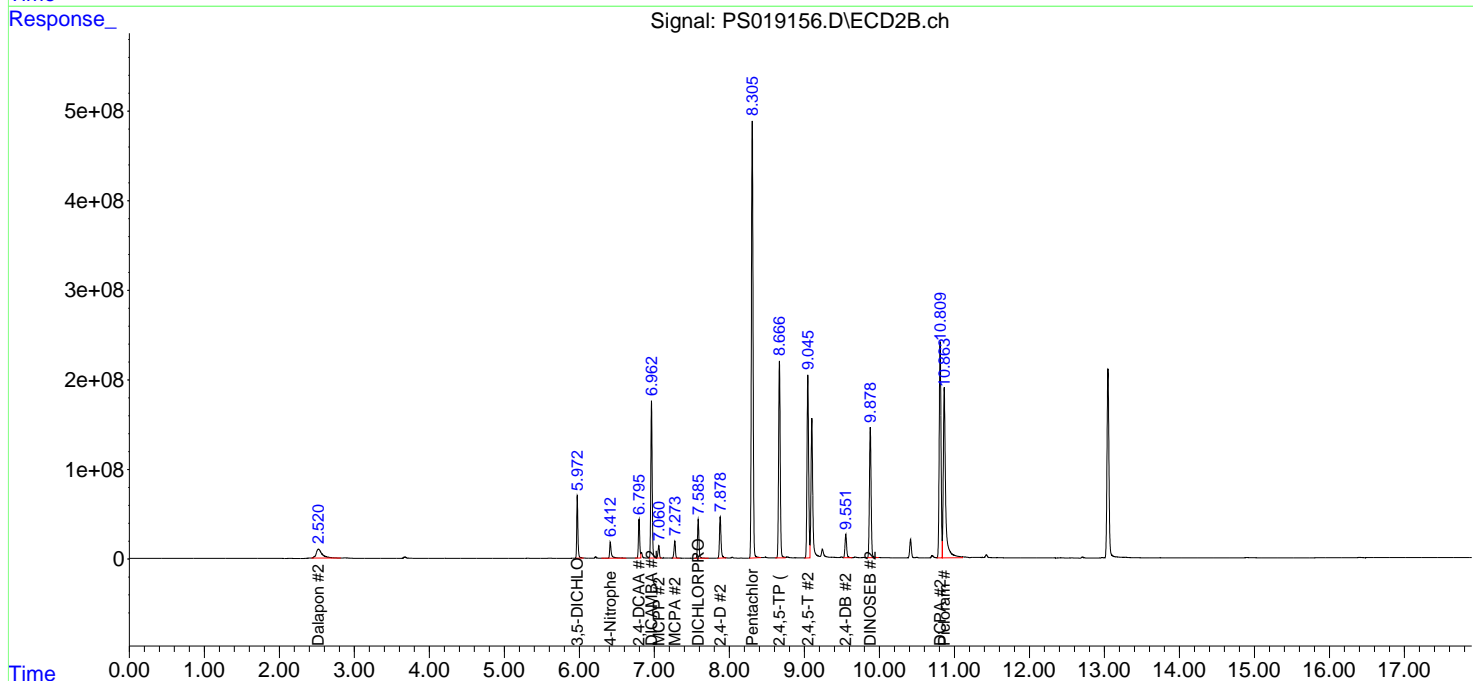
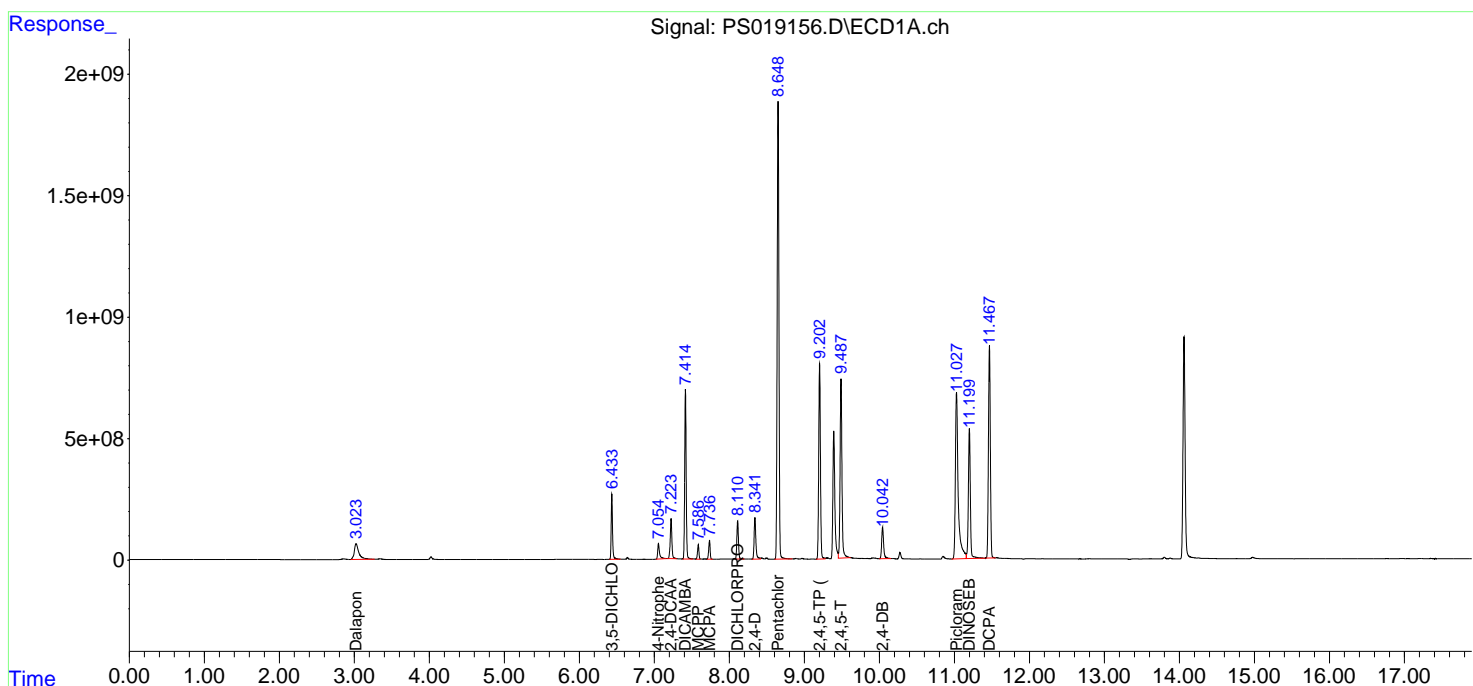
(f)=RT Delta > 1/2 Window (#)=Amounts differ by > 25% (m)=manual int.

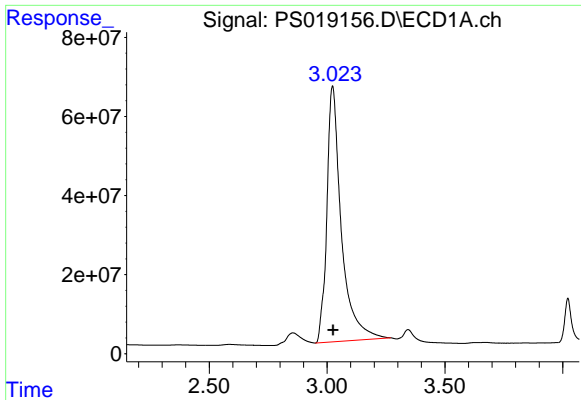
Data Path : Z:\pestpcbsrv\HPCHEM1\ECD\_S\Data\PS042722\  
 Data File : PS019156.D  
 Signal(s) : Signal #1: ECD1A.ch Signal #2: ECD2B.ch  
 Acq On : 27 Apr 2022 13:50  
 Operator : AJ\MA  
 Sample : HSTDCCC750  
 Misc :  
 ALS Vial : 3 Sample Multiplier: 1

Instrument :  
 ECD\_S  
 ClientSampleId :

Integration File signal 1: autoint1.e  
 Integration File signal 2: autoint2.e  
 Quant Time: Apr 28 01:49:11 2022  
 Quant Method : Z:\pestpcbsrv\HPCHEM1\ECD\_S\Method\PS041822.M  
 Quant Title : 8080.M  
 QLast Update : Mon Apr 18 17:28:16 2022  
 Response via : Initial Calibration  
 Integrator: ChemStation

Volume Inj. : 2 µl  
 Signal #1 Phase : Rtx-CLPesticides Signal #2 Phase: Rtx-CLPesticides2  
 Signal #1 Info : 30M x 0.32mm x0.5 Signal #2 Info : 30M x 0.32mm x 0.25µm

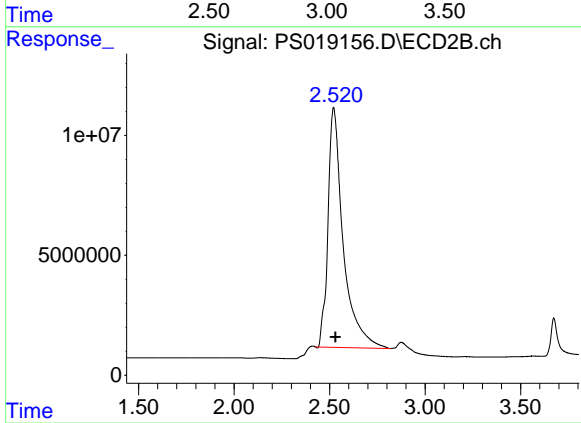




#1 Dalapon

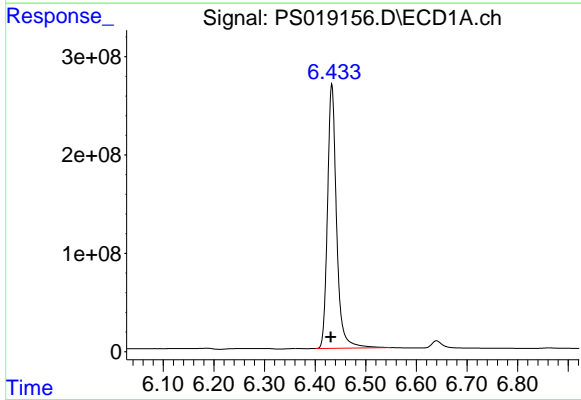
R.T.: 3.023 min  
Delta R.T.: -0.003 min  
Response: 2766652780  
Conc: 616.42 ng/ml

Instrument :  
ECD\_S  
ClientSampleId :



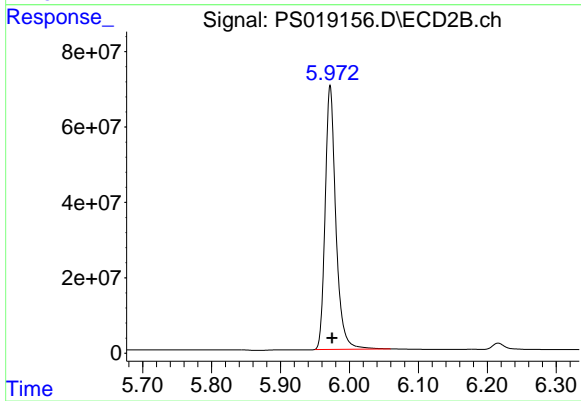
#1 Dalapon

R.T.: 2.521 min  
Delta R.T.: -0.010 min  
Response: 555564199  
Conc: 598.37 ng/ml



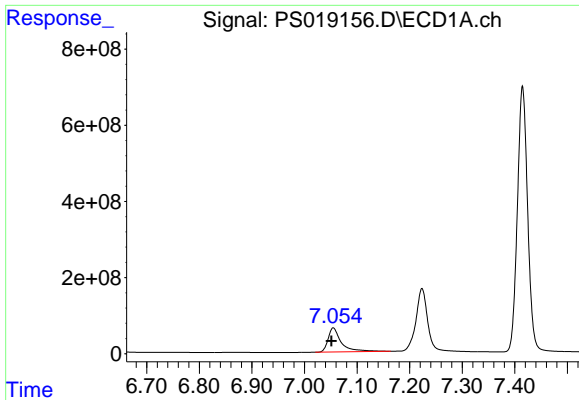
#2 3,5-DICHLOROBENZOIC ACID

R.T.: 6.433 min  
Delta R.T.: 0.002 min  
Response: 3339356311  
Conc: 671.55 ng/ml



#2 3,5-DICHLOROBENZOIC ACID

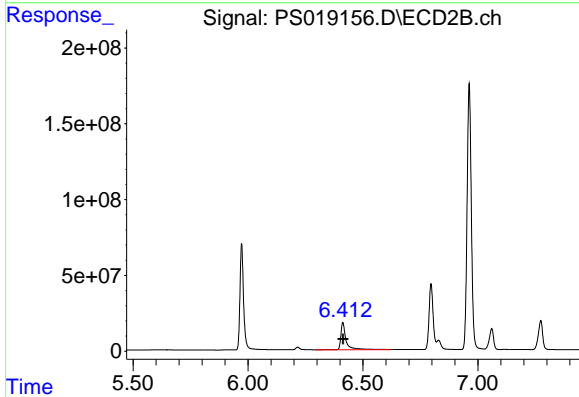
R.T.: 5.972 min  
Delta R.T.: -0.003 min  
Response: 753158375  
Conc: 672.24 ng/ml



#3 4-Nitrophenol

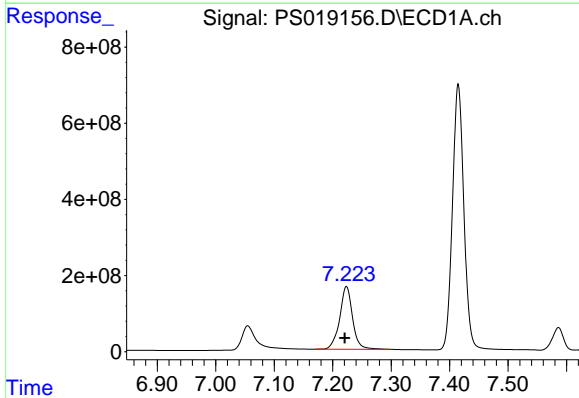
R.T.: 7.055 min  
 Delta R.T.: 0.004 min  
 Response: 1107637325  
 Conc: 845.77 ng/ml

Instrument :  
 ECD\_S  
 ClientSampleId :



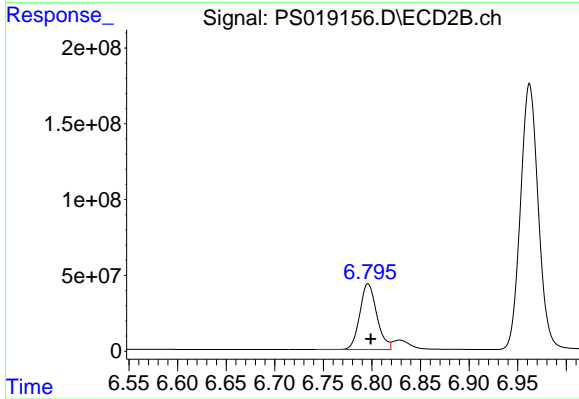
#3 4-Nitrophenol

R.T.: 6.412 min  
 Delta R.T.: 0.000 min  
 Response: 289278967  
 Conc: 727.79 ng/ml



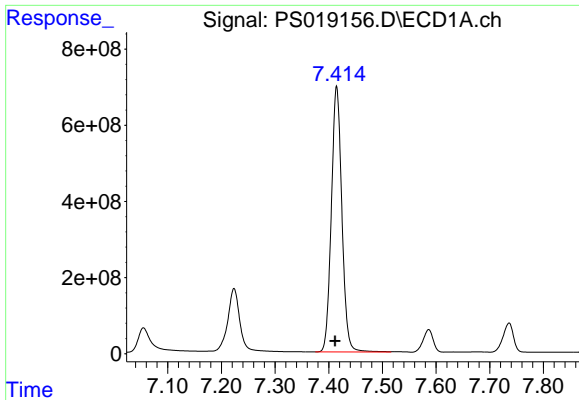
#4 2,4-DCAA

R.T.: 7.224 min  
 Delta R.T.: 0.003 min  
 Response: 2520490867  
 Conc: 673.92 ng/ml



#4 2,4-DCAA

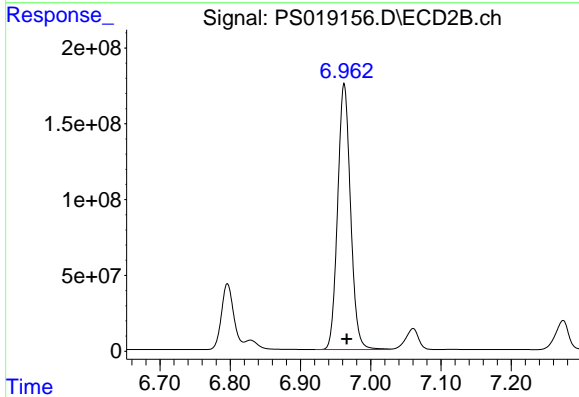
R.T.: 6.796 min  
 Delta R.T.: -0.003 min  
 Response: 529552644  
 Conc: 729.53 ng/ml



#5 DICAMBA

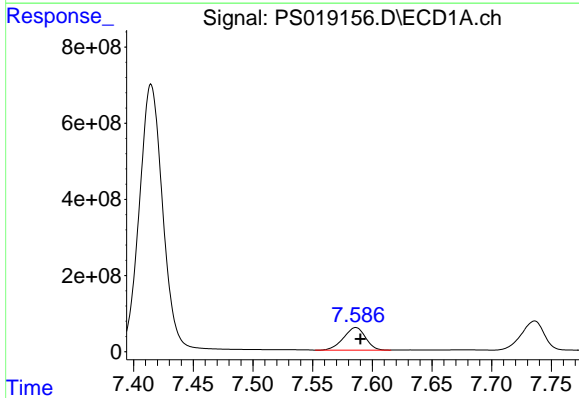
R.T.: 7.415 min  
 Delta R.T.: 0.003 min  
 Response: 9498050168  
 Conc: 688.20 ng/ml

Instrument :  
 ECD\_S  
 ClientSampleId :



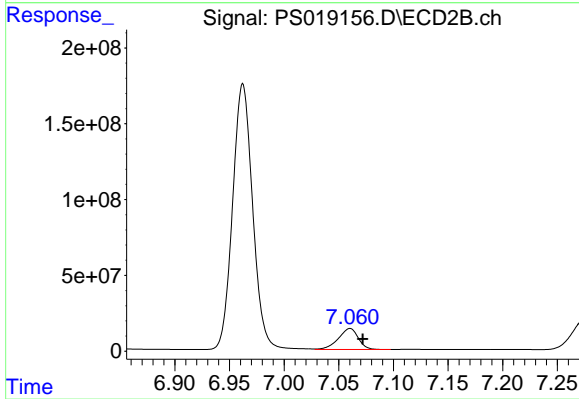
#5 DICAMBA

R.T.: 6.962 min  
 Delta R.T.: -0.004 min  
 Response: 2239483510  
 Conc: 692.15 ng/ml



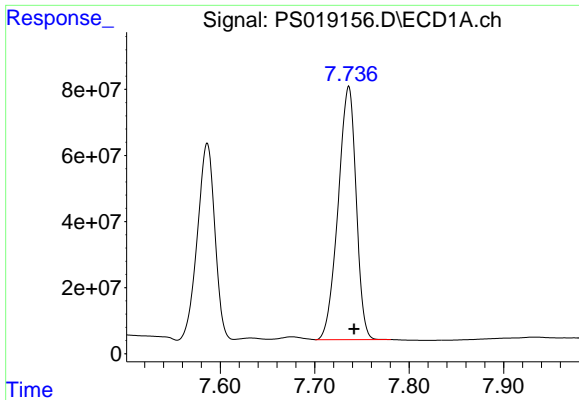
#6 MCP

R.T.: 7.586 min  
 Delta R.T.: -0.004 min  
 Response: 759069801  
 Conc: 69.67 ug/ml



#6 MCP

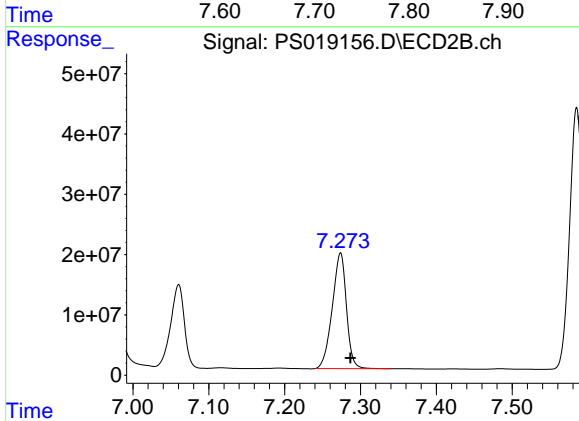
R.T.: 7.060 min  
 Delta R.T.: -0.011 min  
 Response: 175880660  
 Conc: 68.41 ug/ml



#7 MCPA

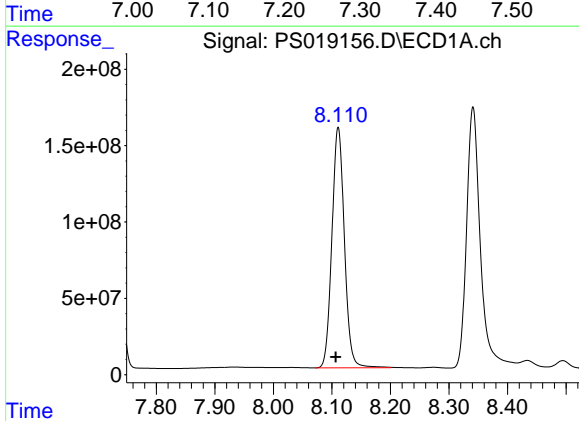
R.T.: 7.736 min  
 Delta R.T.: -0.005 min  
 Response: 1015549930  
 Conc: 67.39 ug/ml

Instrument :  
 ECD\_S  
 ClientSampleId :



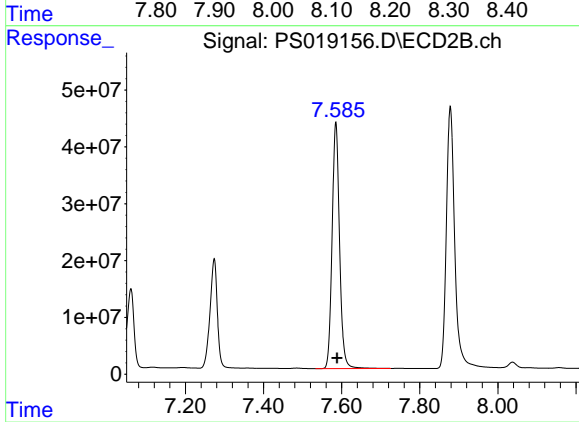
#7 MCPA

R.T.: 7.274 min  
 Delta R.T.: -0.013 min  
 Response: 249449002  
 Conc: 68.69 ug/ml



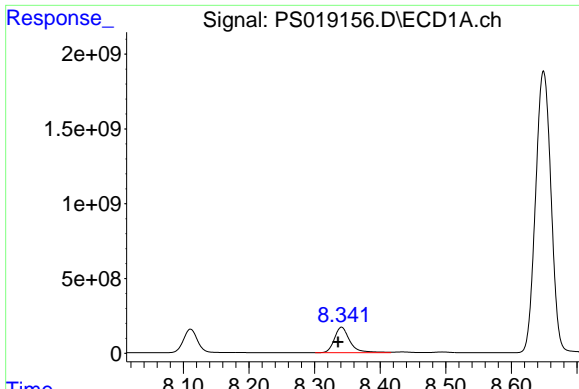
#8 DICHLORPROP

R.T.: 8.111 min  
 Delta R.T.: 0.004 min  
 Response: 2332745924  
 Conc: 654.94 ng/ml



#8 DICHLORPROP

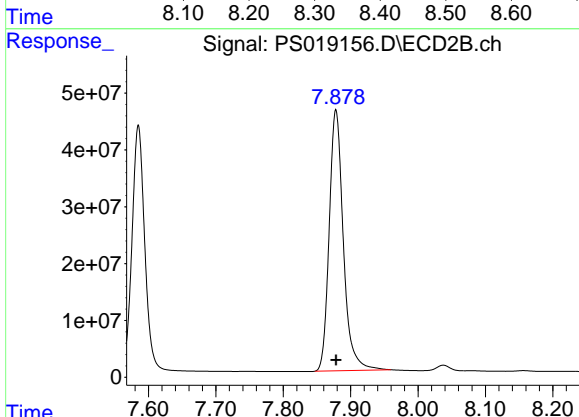
R.T.: 7.585 min  
 Delta R.T.: -0.003 min  
 Response: 572023413  
 Conc: 684.53 ng/ml



#9 2,4-D

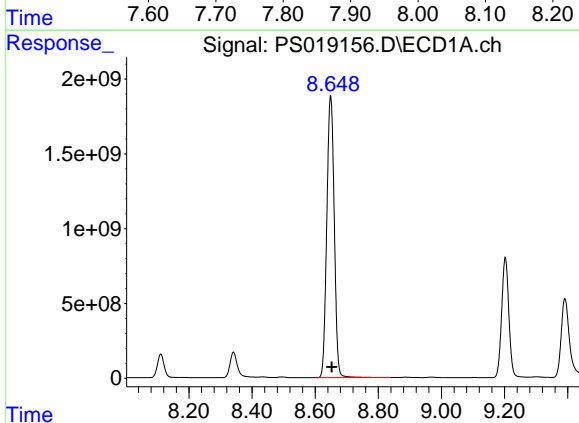
R.T.: 8.341 min  
 Delta R.T.: 0.005 min  
 Response: 2778002564  
 Conc: 676.91 ng/ml

Instrument :  
 ECD\_S  
 ClientSampleId :



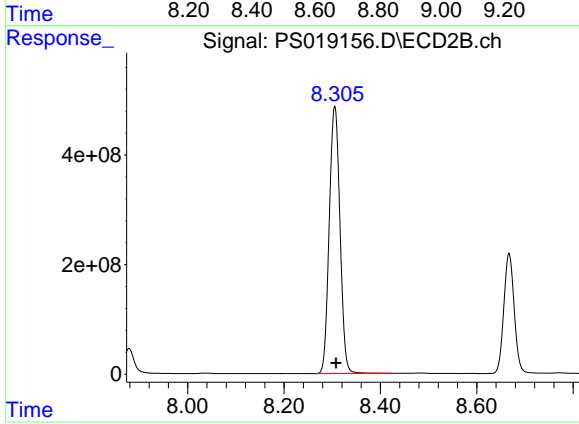
#9 2,4-D

R.T.: 7.878 min  
 Delta R.T.: 0.000 min  
 Response: 670469551  
 Conc: 706.42 ng/ml



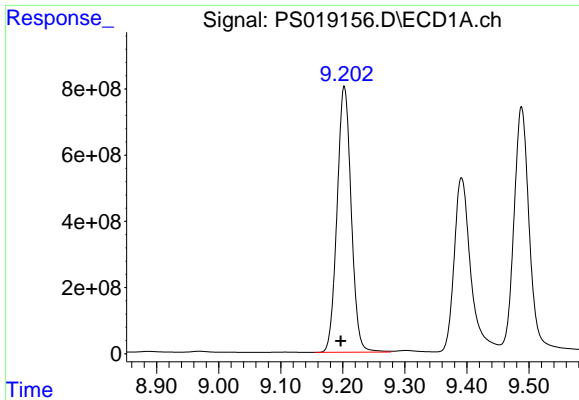
#10 Pentachlorophenol

R.T.: 8.649 min  
 Delta R.T.: -0.003 min  
 Response: 30848269414  
 Conc: 668.99 ng/ml



#10 Pentachlorophenol

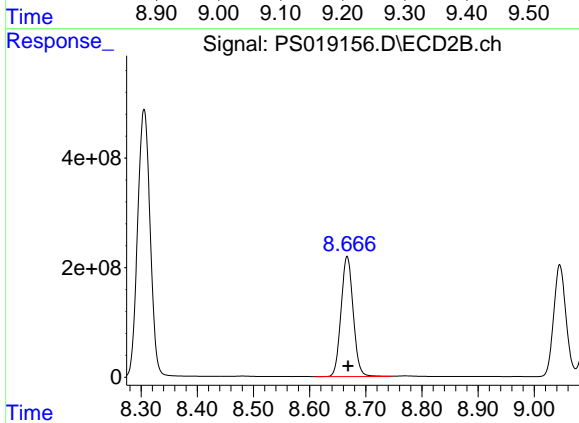
R.T.: 8.305 min  
 Delta R.T.: -0.002 min  
 Response: 7551768934  
 Conc: 698.62 ng/ml



#11 2,4,5-TP (SILVEX)

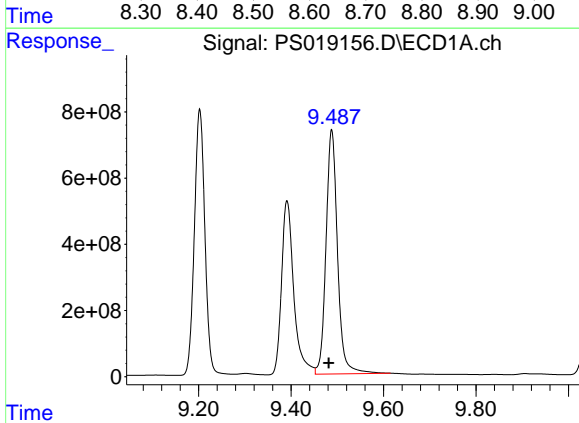
R.T.: 9.202 min  
 Delta R.T.: 0.005 min  
 Response: 12708724216  
 Conc: 638.18 ng/ml

Instrument :  
 ECD\_S  
 ClientSampleId :



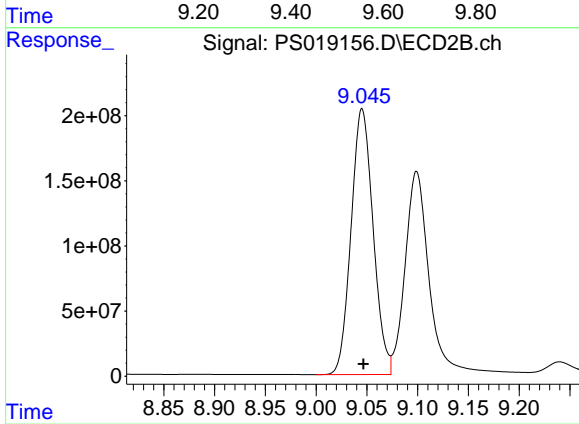
#11 2,4,5-TP (SILVEX)

R.T.: 8.667 min  
 Delta R.T.: -0.002 min  
 Response: 3294416753  
 Conc: 699.67 ng/ml



#12 2,4,5-T

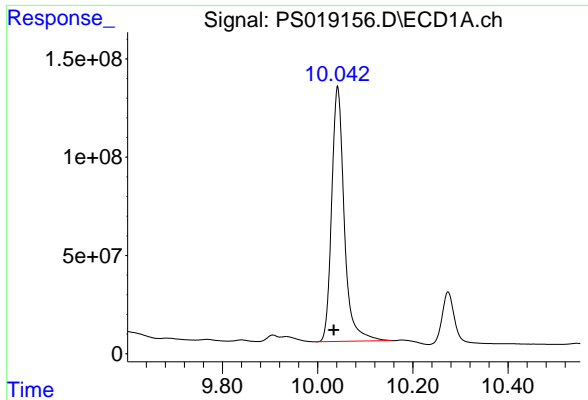
R.T.: 9.488 min  
 Delta R.T.: 0.006 min  
 Response: 12739838706  
 Conc: 641.12 ng/ml



#12 2,4,5-T

R.T.: 9.045 min  
 Delta R.T.: -0.001 min  
 Response: 3079778218  
 Conc: 713.18 ng/ml

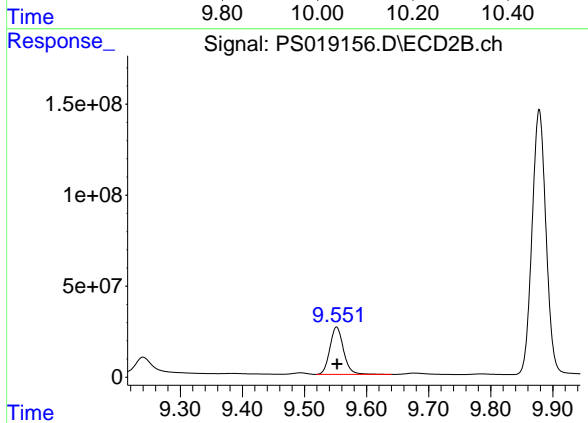




#13 2,4-DB

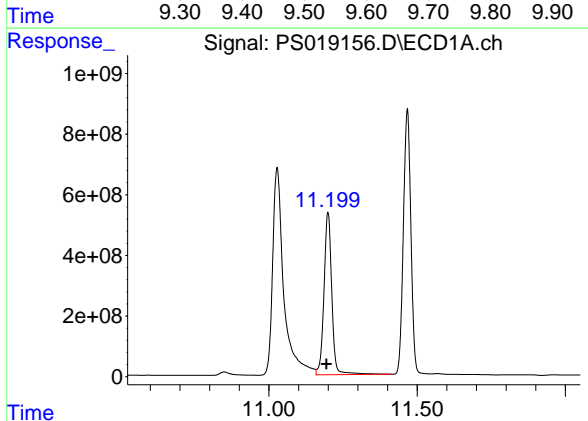
R.T.: 10.042 min  
 Delta R.T.: 0.008 min  
 Response: 2379039794  
 Conc: 675.53 ng/ml

Instrument :  
 ECD\_S  
 ClientSampleId :



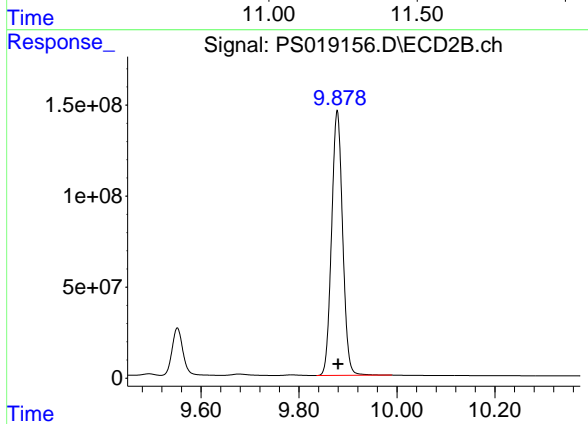
#13 2,4-DB

R.T.: 9.552 min  
 Delta R.T.: 0.000 min  
 Response: 398704856  
 Conc: 719.27 ng/ml



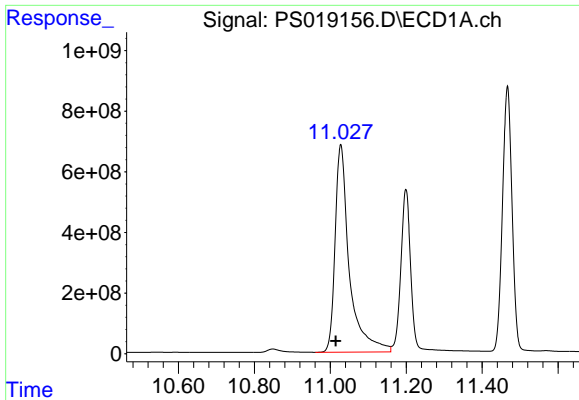
#14 DINOSEB

R.T.: 11.199 min  
 Delta R.T.: 0.005 min  
 Response: 9799958089  
 Conc: 640.49 ng/ml



#14 DINOSEB

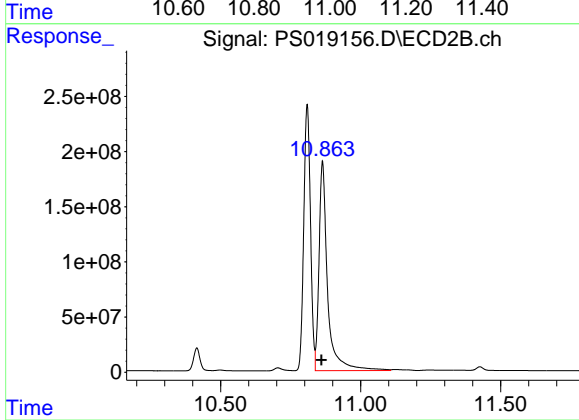
R.T.: 9.878 min  
 Delta R.T.: -0.002 min  
 Response: 2274743084  
 Conc: 678.45 ng/ml



#15 Picloram

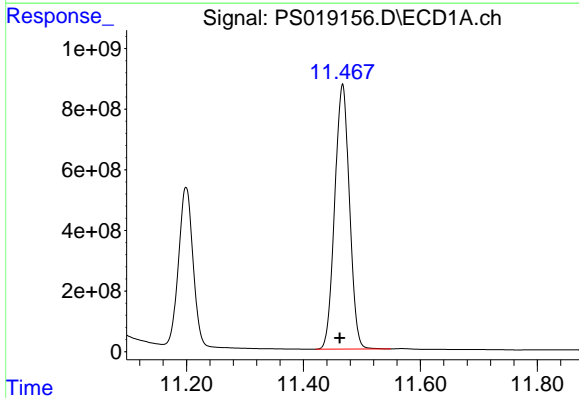
R.T.: 11.028 min  
 Delta R.T.: 0.014 min  
 Response: 17871553170  
 Conc: 666.93 ng/ml

Instrument :  
 ECD\_S  
 ClientSampleId :



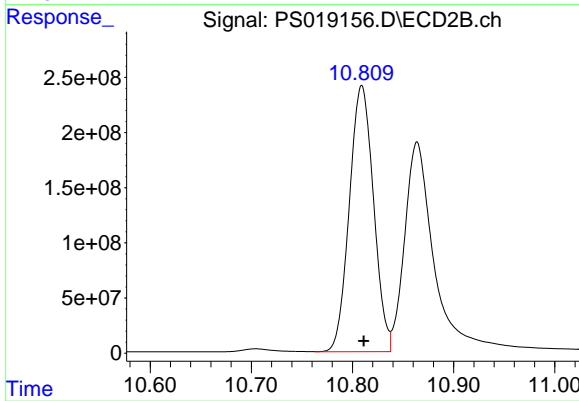
#15 Picloram

R.T.: 10.864 min  
 Delta R.T.: 0.004 min  
 Response: 4050647912  
 Conc: 684.12 ng/ml



#16 DCPA

R.T.: 11.467 min  
 Delta R.T.: 0.005 min  
 Response: 15280727100  
 Conc: 665.96 ng/ml



#16 DCPA

R.T.: 10.809 min  
 Delta R.T.: -0.002 min  
 Response: 4011390245  
 Conc: 700.84 ng/ml