

Data Path : Z:\pestpcbsrv\HPCHEM1\ECD_S\Data\PS042821\
 Data File : PS014831.D
 Signal(s) : Signal #1: ECD1A.ch Signal #2: ECD2B.ch
 Acq On : 28 Apr 2021 09:05
 Operator : DD\AJ
 Sample : M2125-01
 Misc :
 ALS Vial : 4 Sample Multiplier: 1

Instrument :
 ECD_S
 ClientSampleId :

Integration File signal 1: autoint1.e
 Integration File signal 2: autoint2.e
 Quant Time: Apr 28 13:13:13 2021
 Quant Method : Z:\pestpcbsrv\HPCHEM1\ECD_S\Method\PS040821.M
 Quant Title : 8080.M
 QLast Update : Thu Apr 08 14:34:06 2021
 Response via : Initial Calibration
 Integrator: ChemStation

Volume Inj. : 2 µl
 Signal #1 Phase : Rtx-CLPesticides Signal #2 Phase: Rtx-CLPesticides2
 Signal #1 Info : 30M x 0.32mm x0.5 Signal #2 Info : 30M x 0.32mm x 0.25µm

	Compound	RT#1	RT#2	Resp#1	Resp#2	ng/ml	ng/ml

System Monitoring Compounds							
4) S	2,4-DCAA	7.158	6.884	693.2E6	242.2E6	455.697	520.356
Target Compounds							
1) T	Dalapon	2.966f	2.566	30644922	17856970	16.995	27.437 #
2) T	3,5-DICHL...	0.000	6.075	0	20292986	N.D.	27.674
3) T	4-Nitroph...	6.927f	6.517	1801606	2527250	2.217	8.951 #
5) T	DICAMBA	7.334	7.017	11193087	8431884	1.924	4.169 #
6) T	MCP P	7.509	7.210f	4849173	3020264	1.114	1.793 #
7) T	MCPA	7.696	0.000	2006760	0	<MDL	N.D. #
8) T	DICHLORPROP	7.978f	7.701	4726849	34113138	3.378	67.575 #
9) T	2,4-D	8.326f	0.000	17242704	0	10.845	N.D. #
10) T	Pentachlo...	8.567	8.395	12254481	4887772	<MDL	<MDL #
11) T	2,4,5-TP ...	9.114	8.732	4874423	9226239	<MDL	3.378 #
12) T	2,4,5-T	9.411	9.154	15362206	4111758	1.867	1.572
13) T	2,4-DB	9.912	9.661	21443857	1311979	14.092	3.782 #
14) T	DINOSEB	11.069	10.018f	29073303	2426288	4.512	1.260 #
15) T	Picloram	10.942	10.972	223.4E6	84788614	19.967	22.611
16) T	DCPA	11.364	10.900	12769238	6543881	1.036	1.612 #

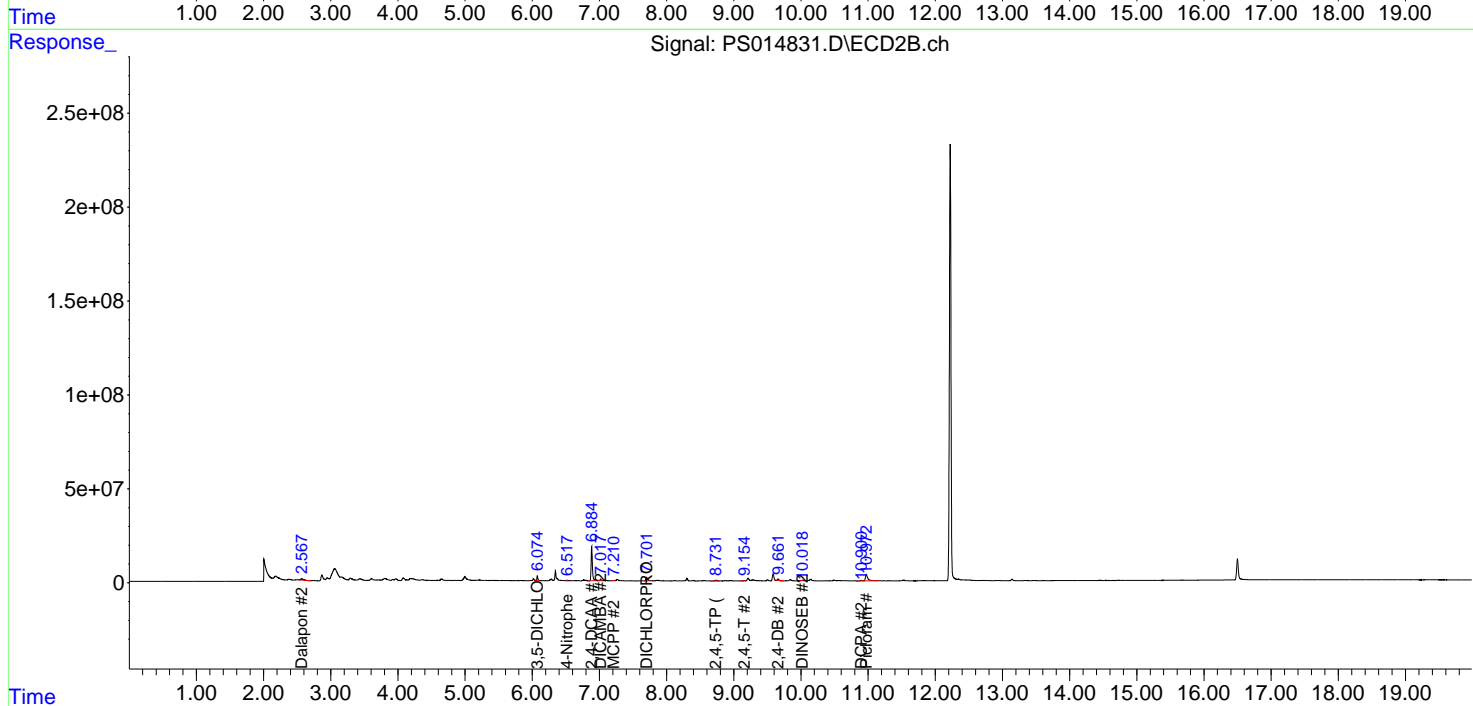
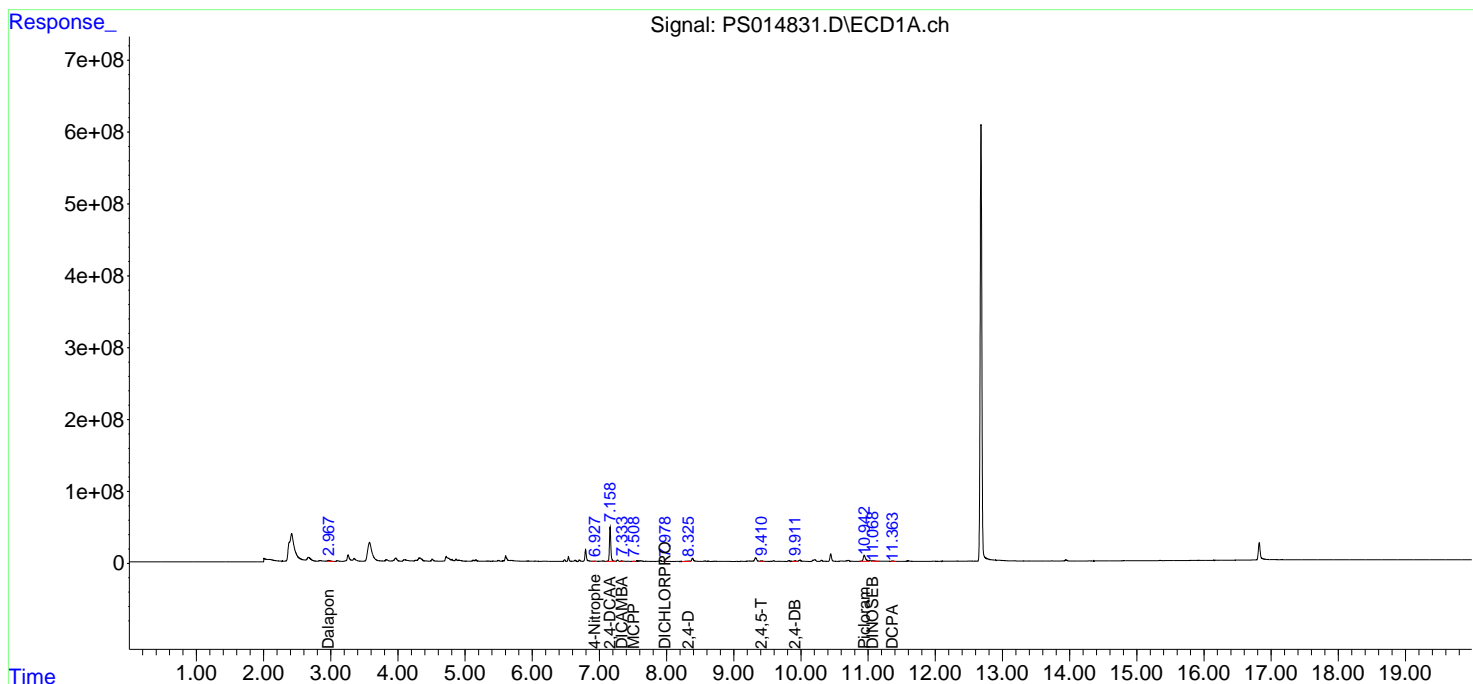
(f)=RT Delta > 1/2 Window (#)=Amounts differ by > 25% (m)=manual int.

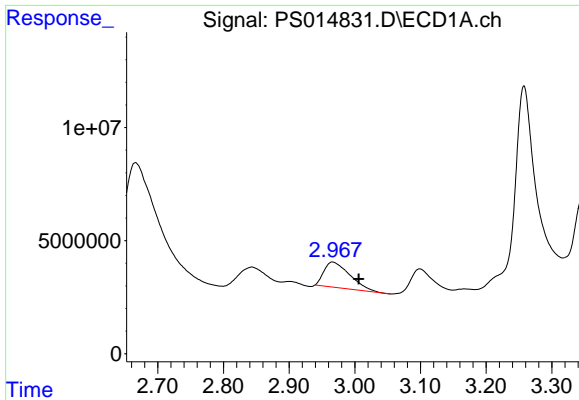
Data Path : Z:\pestpcbsrv\HPCHEM1\ECD_S\Data\PS042821\
 Data File : PS014831.D
 Signal(s) : Signal #1: ECD1A.ch Signal #2: ECD2B.ch
 Acq On : 28 Apr 2021 09:05
 Operator : DD\AJ
 Sample : M2125-01
 Misc :
 ALS Vial : 4 Sample Multiplier: 1

Instrument :
 ECD_S
 ClientSampled :

Integration File signal 1: autoint1.e
 Integration File signal 2: autoint2.e
 Quant Time: Apr 28 13:13:13 2021
 Quant Method : Z:\pestpcbsrv\HPCHEM1\ECD_S\Method\PS040821.M
 Quant Title : 8080.M
 QLast Update : Thu Apr 08 14:34:06 2021
 Response via : Initial Calibration
 Integrator: ChemStation

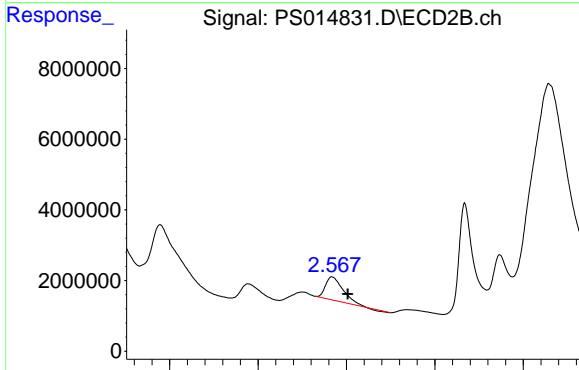
Volume Inj. : 2 µl
 Signal #1 Phase : Rtx-CLPesticides Signal #2 Phase: Rtx-CLPesticides2
 Signal #1 Info : 30M x 0.32mm x0.5 Signal #2 Info : 30M x 0.32mm x 0.25µm



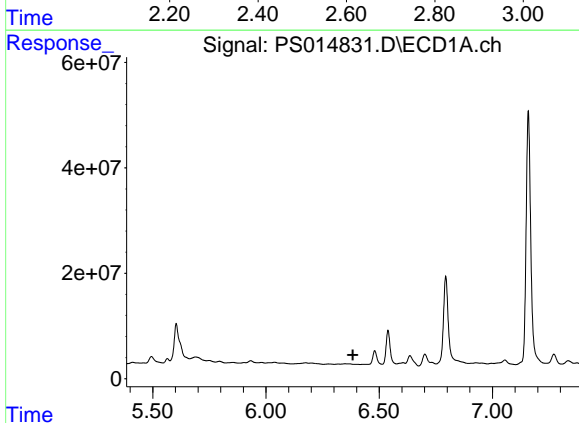


#1 Dalapon
 R.T.: 2.966 min
 Delta R.T.: -0.040 min
 Response: 30644922
 Conc: 17.00 ng/ml

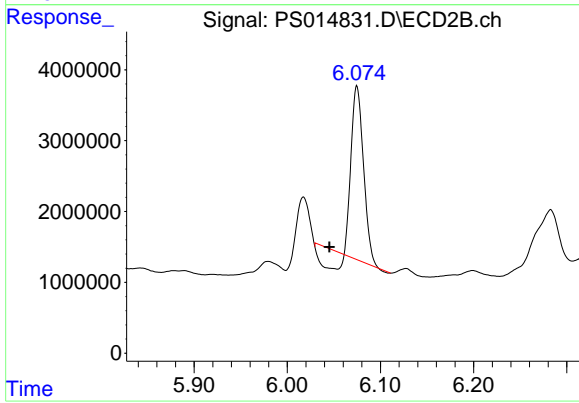
Instrument :
 ECD_S
 ClientSampled :



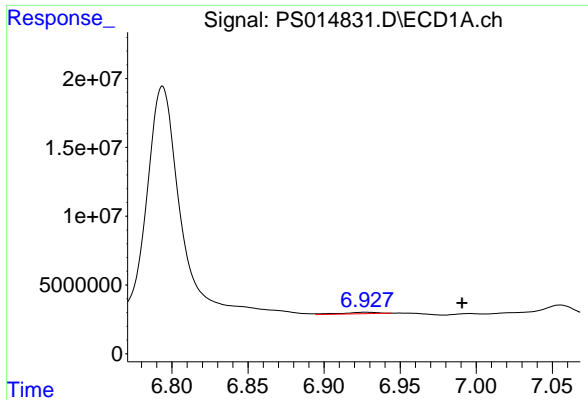
#1 Dalapon
 R.T.: 2.566 min
 Delta R.T.: -0.036 min
 Response: 17856970
 Conc: 27.44 ng/ml



#2 3,5-DICHLOROBENZOIC ACID
 R.T.: 0.000 min
 Exp R.T. : 6.384 min
 Response: 0
 Conc: N.D.

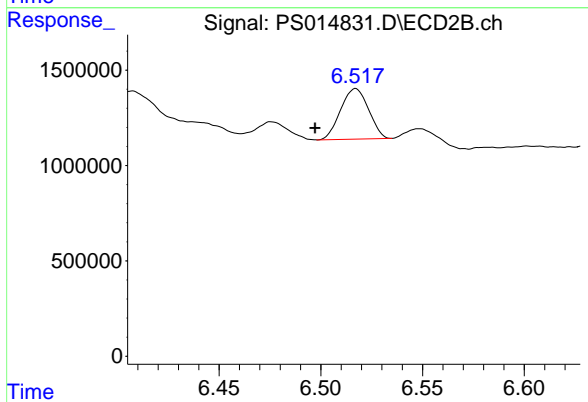


#2 3,5-DICHLOROBENZOIC ACID
 R.T.: 6.075 min
 Delta R.T.: 0.029 min
 Response: 20292986
 Conc: 27.67 ng/ml

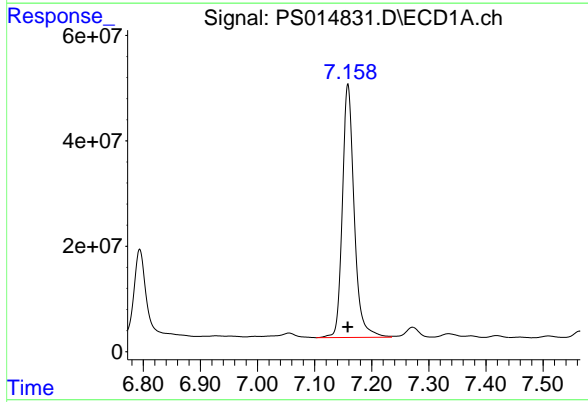


#3 4-Nitrophenol
R.T.: 6.927 min
Delta R.T.: -0.064 min
Response: 1801606
Conc: 2.22 ng/ml

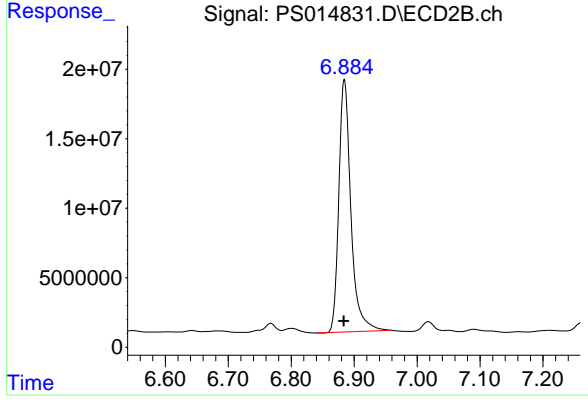
Instrument :
ECD_S
ClientSampleId :



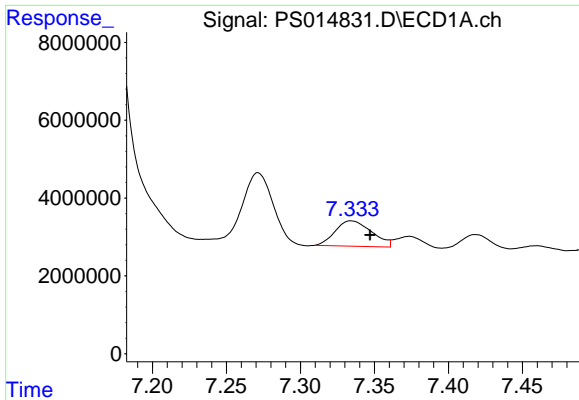
#3 4-Nitrophenol
R.T.: 6.517 min
Delta R.T.: 0.020 min
Response: 2527250
Conc: 8.95 ng/ml



#4 2,4-DCAA
R.T.: 7.158 min
Delta R.T.: 0.000 min
Response: 693203858
Conc: 455.70 ng/ml

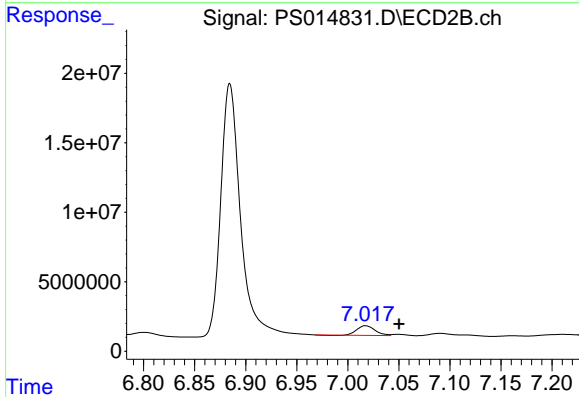


#4 2,4-DCAA
R.T.: 6.884 min
Delta R.T.: 0.000 min
Response: 242202121
Conc: 520.36 ng/ml

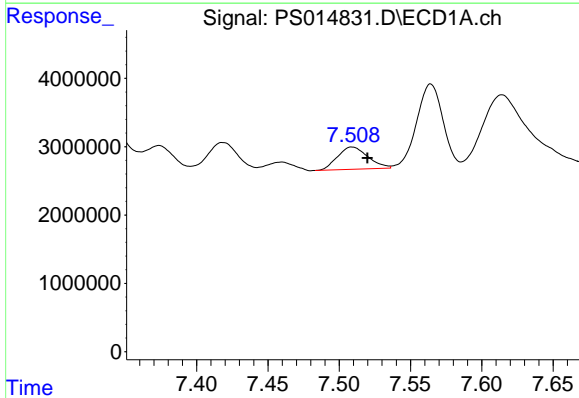


#5 DICAMBA
 R.T.: 7.334 min
 Delta R.T.: -0.013 min
 Response: 11193087
 Conc: 1.92 ng/ml

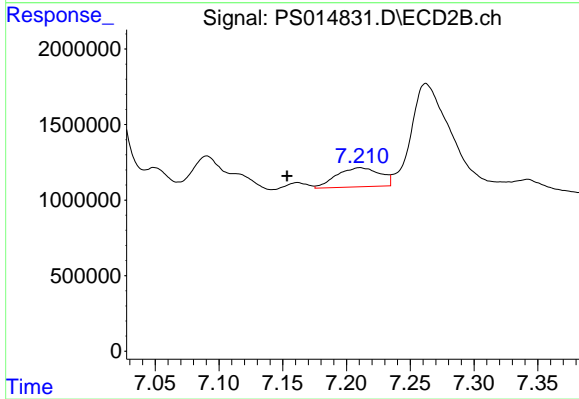
Instrument :
 ECD_S
 ClientSampleId :



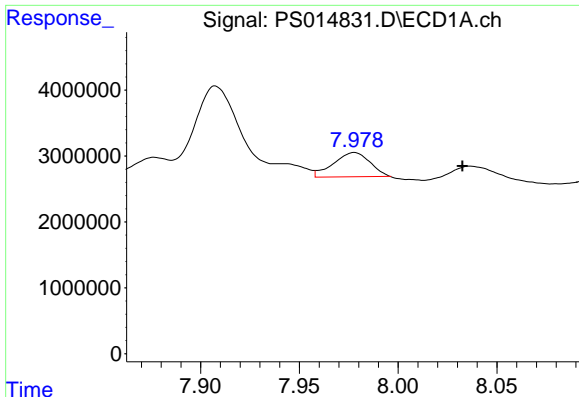
#5 DICAMBA
 R.T.: 7.017 min
 Delta R.T.: -0.033 min
 Response: 8431884
 Conc: 4.17 ng/ml



#6 MCP
 R.T.: 7.509 min
 Delta R.T.: -0.011 min
 Response: 4849173
 Conc: 1.11 ug/ml



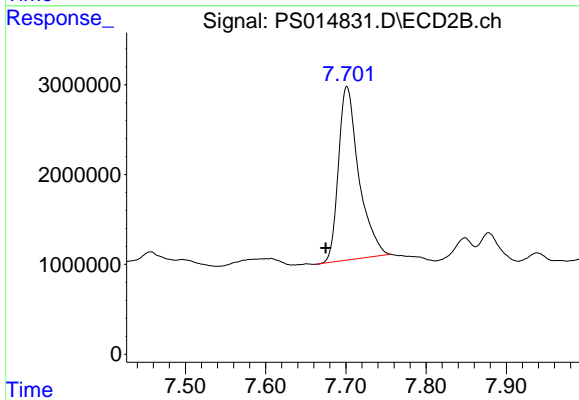
#6 MCP
 R.T.: 7.210 min
 Delta R.T.: 0.057 min
 Response: 3020264
 Conc: 1.79 ug/ml



#8 DICHLORPROP

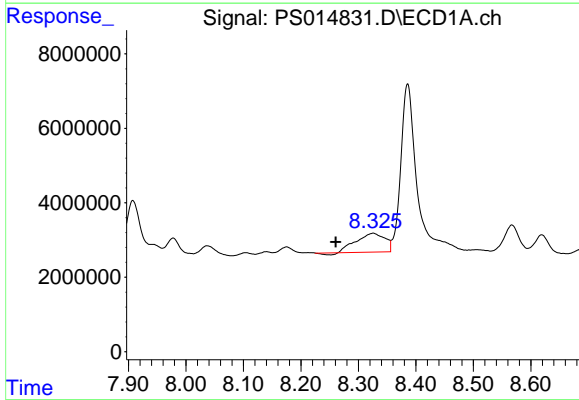
R.T.: 7.978 min
 Delta R.T.: -0.055 min
 Response: 4726849
 Conc: 3.38 ng/ml

Instrument :
 ECD_S
 ClientSampled :



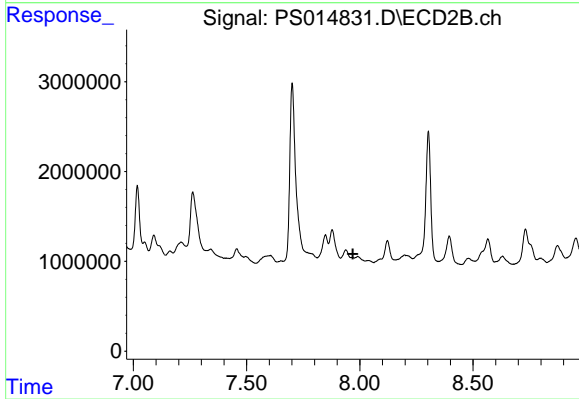
#8 DICHLORPROP

R.T.: 7.701 min
 Delta R.T.: 0.027 min
 Response: 34113138
 Conc: 67.57 ng/ml



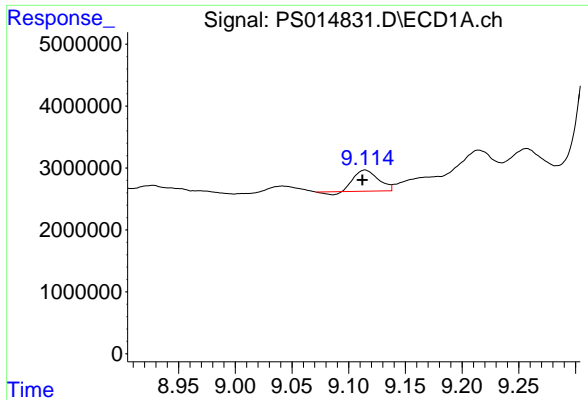
#9 2,4-D

R.T.: 8.326 min
 Delta R.T.: 0.065 min
 Response: 17242704
 Conc: 10.84 ng/ml



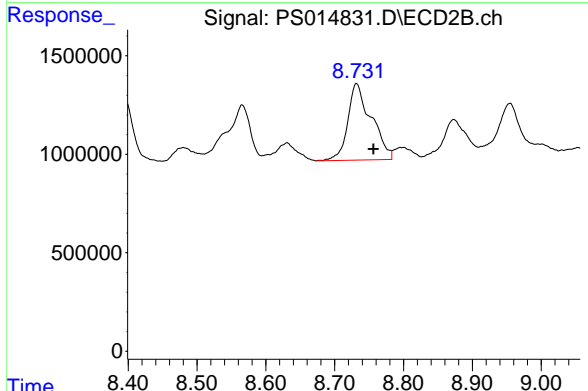
#9 2,4-D

R.T.: 0.000 min
 Exp R.T. : 7.970 min
 Response: 0
 Conc: N.D.

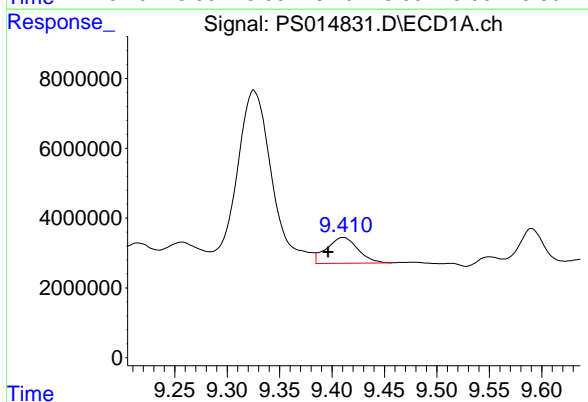


#11 2,4,5-TP (SILVEX)
 R.T.: 9.114 min
 Delta R.T.: 0.002 min
 Response: 4874423
 Conc: N.D.

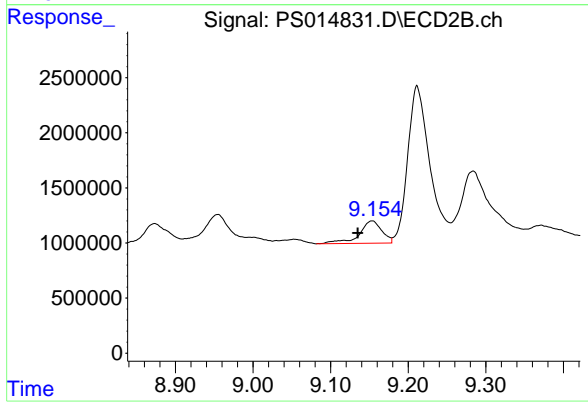
Instrument :
 ECD_S
 ClientSampleId :



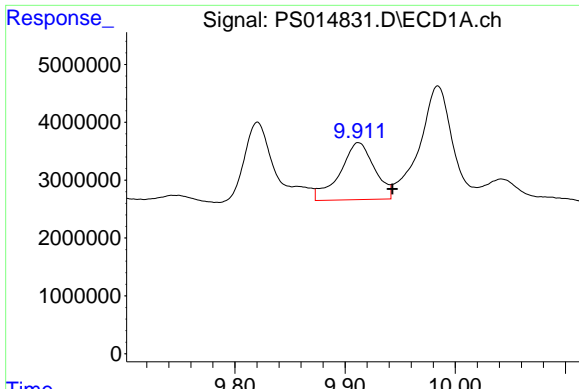
#11 2,4,5-TP (SILVEX)
 R.T.: 8.732 min
 Delta R.T.: -0.024 min
 Response: 9226239
 Conc: 3.38 ng/ml



#12 2,4,5-T
 R.T.: 9.411 min
 Delta R.T.: 0.014 min
 Response: 15362206
 Conc: 1.87 ng/ml

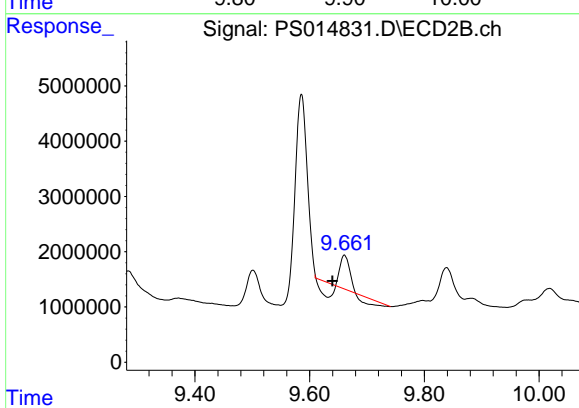


#12 2,4,5-T
 R.T.: 9.154 min
 Delta R.T.: 0.018 min
 Response: 4111758
 Conc: 1.57 ng/ml

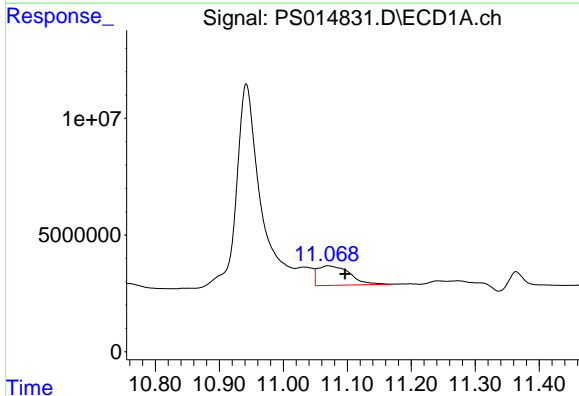


#13 2,4-DB
R.T.: 9.912 min
Delta R.T.: -0.031 min
Response: 21443857
Conc: 14.09 ng/ml

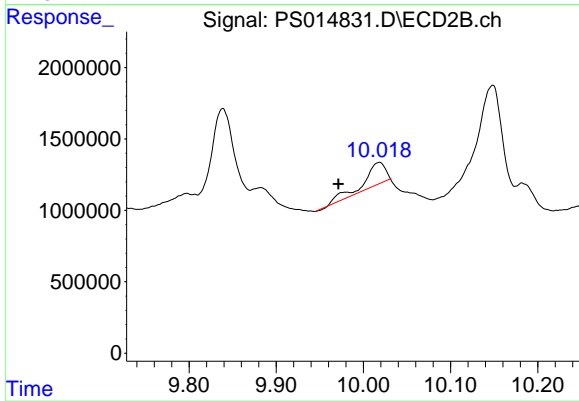
Instrument :
ECD_S
ClientSampled :



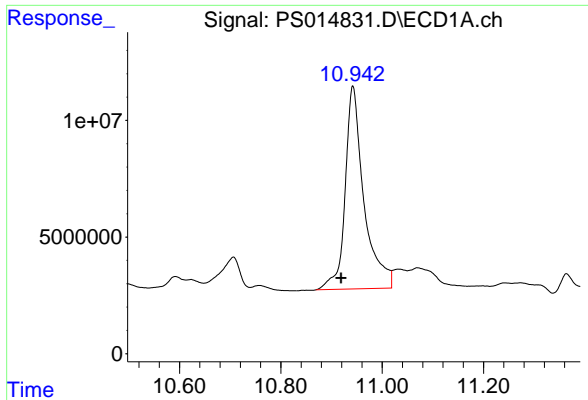
#13 2,4-DB
R.T.: 9.661 min
Delta R.T.: 0.021 min
Response: 1311979
Conc: 3.78 ng/ml



#14 DINOSEB
R.T.: 11.069 min
Delta R.T.: -0.027 min
Response: 29073303
Conc: 4.51 ng/ml



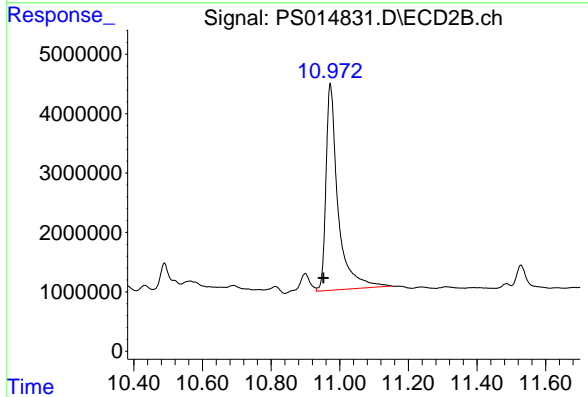
#14 DINOSEB
R.T.: 10.018 min
Delta R.T.: 0.047 min
Response: 2426288
Conc: 1.26 ng/ml



#15 Picloram

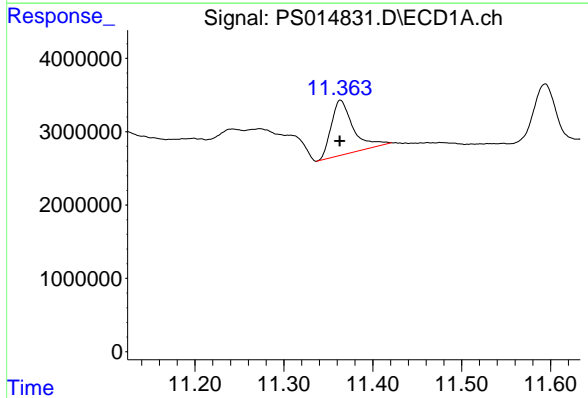
R.T.: 10.942 min
 Delta R.T.: 0.023 min
 Response: 223394416
 Conc: 19.97 ng/ml

Instrument :
 ECD_S
 ClientSampleId :



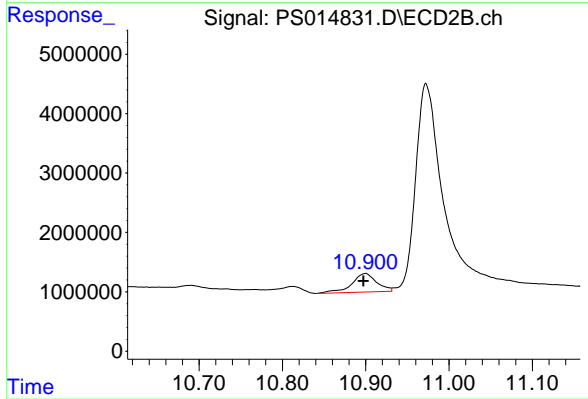
#15 Picloram

R.T.: 10.972 min
 Delta R.T.: 0.020 min
 Response: 84788614
 Conc: 22.61 ng/ml



#16 DCPA

R.T.: 11.364 min
 Delta R.T.: 0.000 min
 Response: 12769238
 Conc: 1.04 ng/ml



#16 DCPA

R.T.: 10.900 min
 Delta R.T.: 0.003 min
 Response: 6543881
 Conc: 1.61 ng/ml