

Data Path : Z:\pestpcbsrv\HPCHEM1\ECD\_S\Data\PS042821\  
 Data File : PS014833.D  
 Signal(s) : Signal #1: ECD1A.ch Signal #2: ECD2B.ch  
 Acq On : 28 Apr 2021 09:57  
 Operator : DD\AJ  
 Sample : M2125-01MSD  
 Misc :  
 ALS Vial : 6 Sample Multiplier: 1

Instrument :  
 ECD\_S  
 ClientSampleId :

Integration File signal 1: autoint1.e  
 Integration File signal 2: autoint2.e  
 Quant Time: Apr 28 13:14:06 2021  
 Quant Method : Z:\pestpcbsrv\HPCHEM1\ECD\_S\Method\PS040821.M  
 Quant Title : 8080.M  
 QLast Update : Thu Apr 08 14:34:06 2021  
 Response via : Initial Calibration  
 Integrator: ChemStation

Volume Inj. : 2 µl  
 Signal #1 Phase : Rtx-CLPesticides Signal #2 Phase: Rtx-CLPesticides2  
 Signal #1 Info : 30M x 0.32mm x0.5 Signal #2 Info : 30M x 0.32mm x 0.25µm

	Compound	RT#1	RT#2	Resp#1	Resp#2	ng/ml	ng/ml
-----							
System Monitoring Compounds							
4) S	2,4-DCAA	7.158	6.885	737.3E6	263.8E6	484.665	566.856
Target Compounds							
1) T	Dalapon	3.007	2.608	662.9E6	234.4E6	367.621	360.128
2) T	3,5-DICHL...	6.383	6.048	937.3E6	313.0E6	452.367	426.809
3) T	4-Nitroph...	7.014	6.525	14353743	4143006	17.663	14.674
5) T	DICAMBA	7.345	7.050	2423.3E6	846.6E6	416.490	418.597
6) T	MCP P	7.509	7.143	184.5E6	70974418	42.383	42.145
7) T	MCPA	7.656	7.356	285.7E6	262.7E6	45.910	108.173 #
8) T	DICHLORPROP	8.031	7.675	621.4E6	250.2E6	444.067	495.712
9) T	2,4-D	8.261	7.972	782.0E6	297.1E6	491.851	534.345
10) T	Pentachlo...	8.565	8.394	9821.5E6	3210.8E6	467.319	477.616
11) T	2,4,5-TP ...	9.110	8.755	3951.2E6	1288.4E6	482.647	471.644
12) T	2,4,5-T	9.396	9.137	3620.5E6	1170.3E6	440.129	447.424
13) T	2,4-DB	9.945	9.643	440.5E6	142.6E6	289.446	411.177 #
14) T	DINOSEB	11.093	9.970	2765.7E6	837.7E6	429.214	435.026
15) T	Picloram	10.923	10.958	4182.6E6	1463.8E6	373.837	390.353
16) T	DCPA	11.359	10.896	4380.1E6	1550.9E6	355.470	381.941
-----							

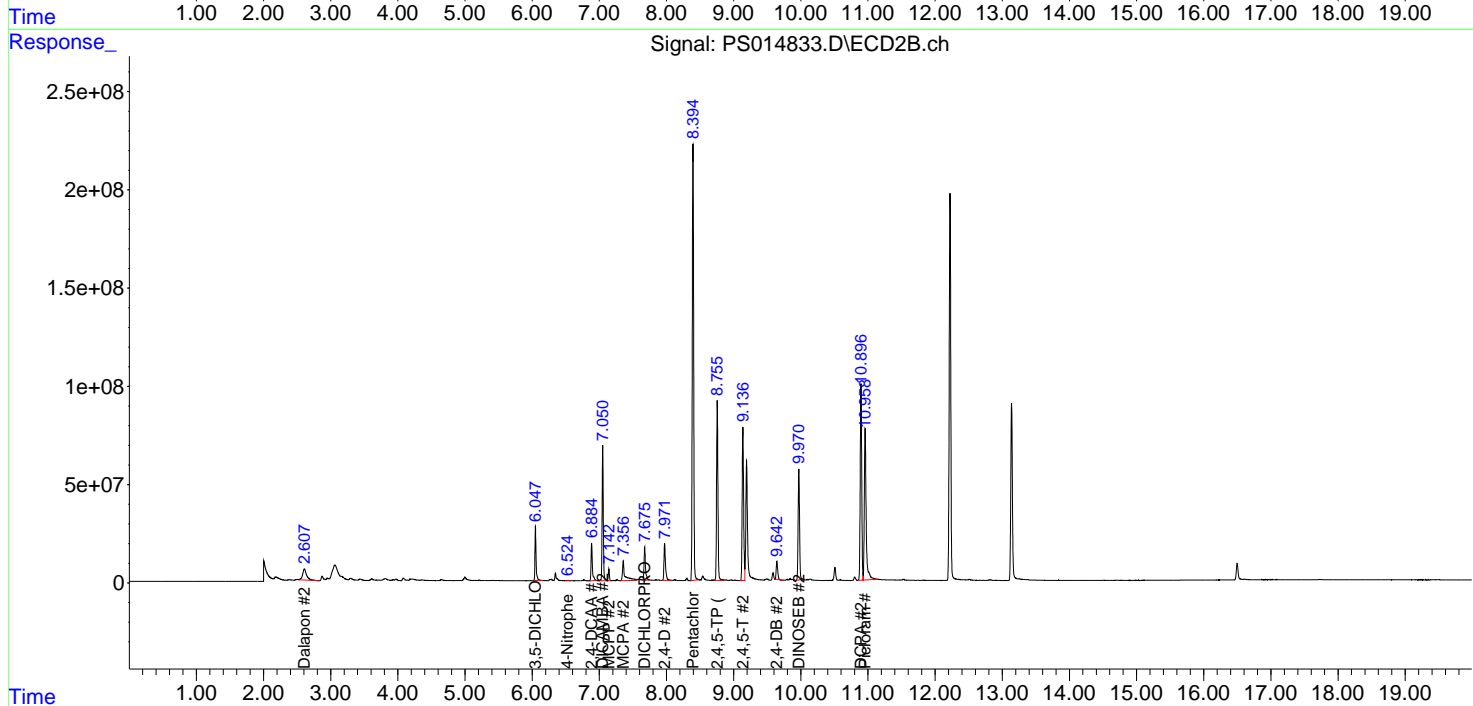
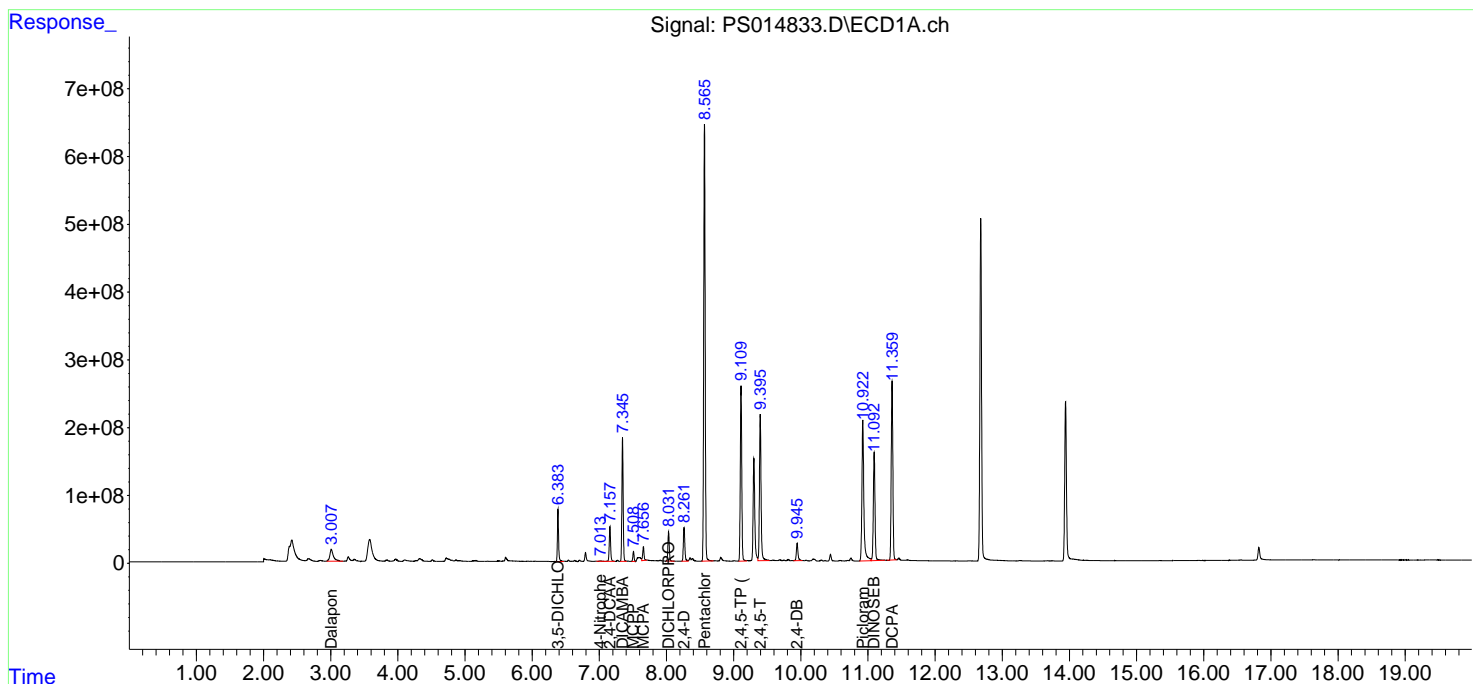
(f)=RT Delta > 1/2 Window (#)=Amounts differ by > 25% (m)=manual int.

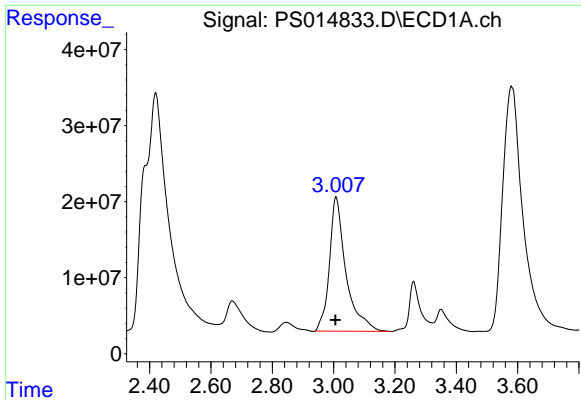
Data Path : Z:\pestpcbsrv\HPCHEM1\ECD\_S\Data\PS042821\  
 Data File : PS014833.D  
 Signal(s) : Signal #1: ECD1A.ch Signal #2: ECD2B.ch  
 Acq On : 28 Apr 2021 09:57  
 Operator : DD\AJ  
 Sample : M2125-01MSD  
 Misc :  
 ALS Vial : 6 Sample Multiplier: 1

Instrument :  
 ECD\_S  
 ClientSampled :

Integration File signal 1: autoint1.e  
 Integration File signal 2: autoint2.e  
 Quant Time: Apr 28 13:14:06 2021  
 Quant Method : Z:\pestpcbsrv\HPCHEM1\ECD\_S\Method\PS040821.M  
 Quant Title : 8080.M  
 QLast Update : Thu Apr 08 14:34:06 2021  
 Response via : Initial Calibration  
 Integrator: ChemStation

Volume Inj. : 2 µl  
 Signal #1 Phase : Rtx-CLPesticides Signal #2 Phase: Rtx-CLPesticides2  
 Signal #1 Info : 30M x 0.32mm x0.5 Signal #2 Info : 30M x 0.32mm x 0.25µm

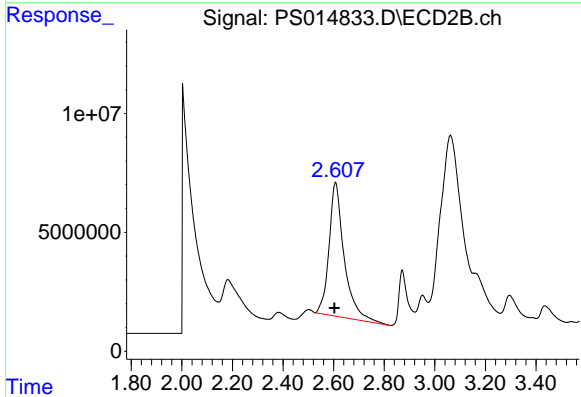




#1 Dalapon

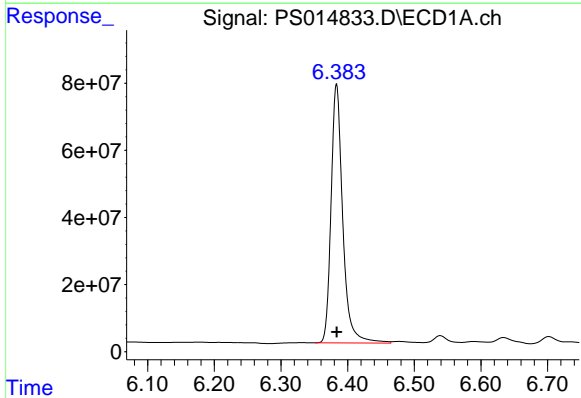
R.T.: 3.007 min  
 Delta R.T.: 0.001 min  
 Response: 662883903  
 Conc: 367.62 ng/ml

Instrument :  
 ECD\_S  
 ClientSampled :



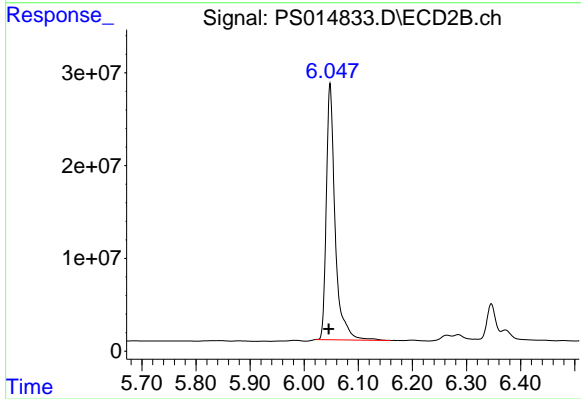
#1 Dalapon

R.T.: 2.608 min  
 Delta R.T.: 0.005 min  
 Response: 234379999  
 Conc: 360.13 ng/ml



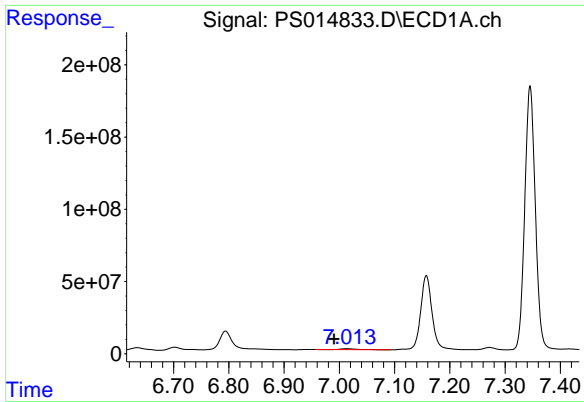
#2 3,5-DICHLOROBENZOIC ACID

R.T.: 6.383 min  
 Delta R.T.: 0.000 min  
 Response: 937305894  
 Conc: 452.37 ng/ml



#2 3,5-DICHLOROBENZOIC ACID

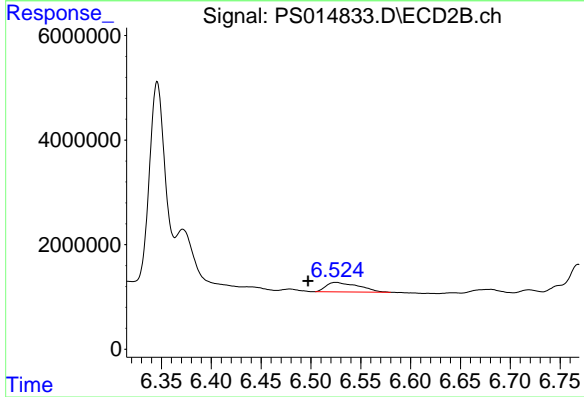
R.T.: 6.048 min  
 Delta R.T.: 0.003 min  
 Response: 312977841  
 Conc: 426.81 ng/ml



#3 4-Nitrophenol

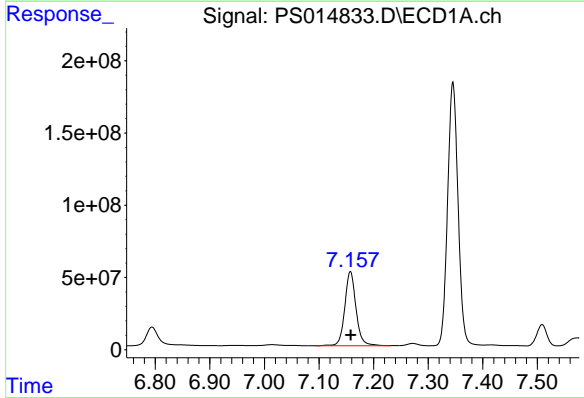
R.T.: 7.014 min  
 Delta R.T.: 0.023 min  
 Response: 14353743  
 Conc: 17.66 ng/ml

Instrument :  
 ECD\_S  
 ClientSampled :



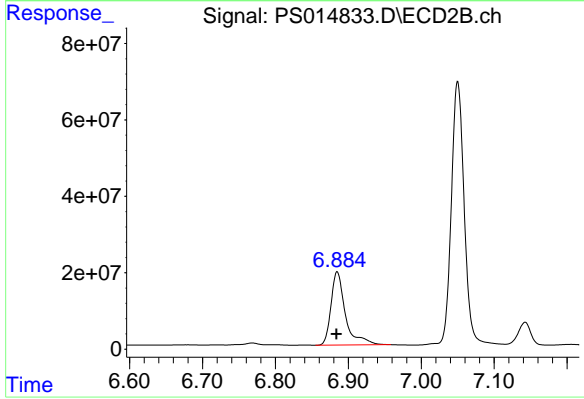
#3 4-Nitrophenol

R.T.: 6.525 min  
 Delta R.T.: 0.028 min  
 Response: 4143006  
 Conc: 14.67 ng/ml



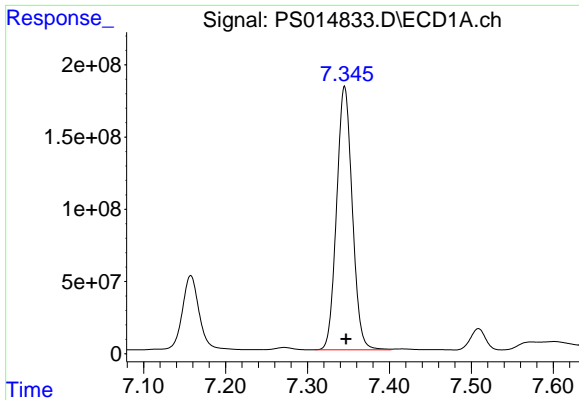
#4 2,4-DCAA

R.T.: 7.158 min  
 Delta R.T.: 0.000 min  
 Response: 737269976  
 Conc: 484.66 ng/ml



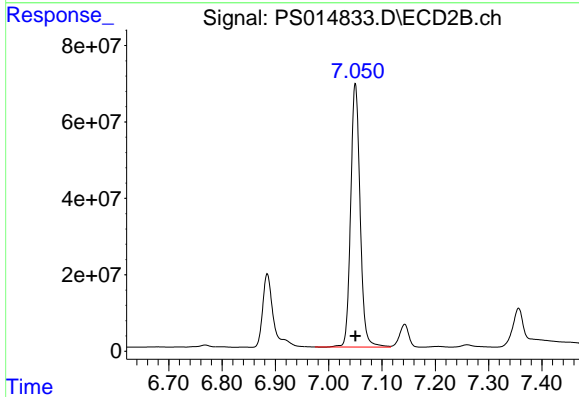
#4 2,4-DCAA

R.T.: 6.885 min  
 Delta R.T.: 0.001 min  
 Response: 263845836  
 Conc: 566.86 ng/ml

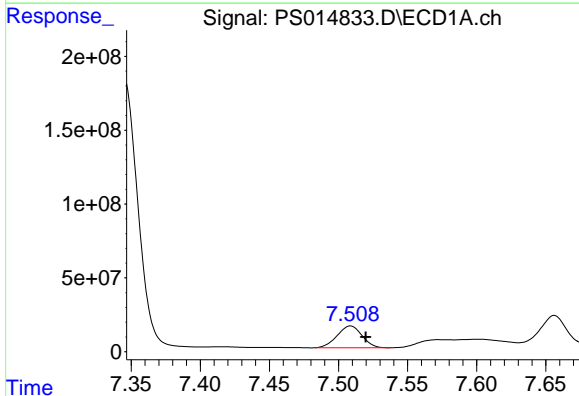


#5 DICAMBA  
 R.T.: 7.345 min  
 Delta R.T.: -0.002 min  
 Response: 2423288922  
 Conc: 416.49 ng/ml

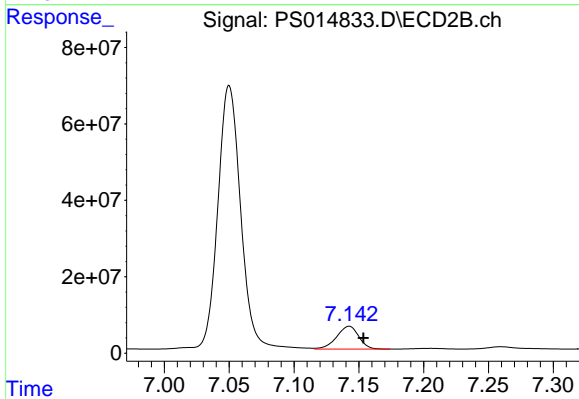
Instrument :  
 ECD\_S  
 ClientSampleId :



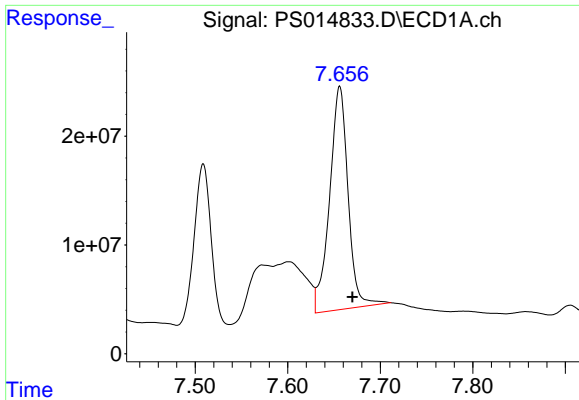
#5 DICAMBA  
 R.T.: 7.050 min  
 Delta R.T.: 0.000 min  
 Response: 846623596  
 Conc: 418.60 ng/ml



#6 MCPP  
 R.T.: 7.509 min  
 Delta R.T.: -0.011 min  
 Response: 184543039  
 Conc: 42.38 ug/ml

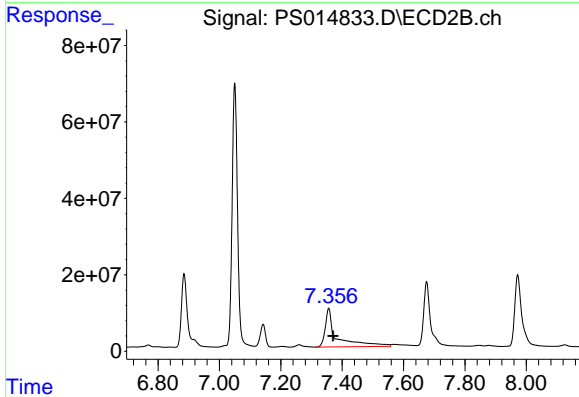


#6 MCPP  
 R.T.: 7.143 min  
 Delta R.T.: -0.011 min  
 Response: 70974418  
 Conc: 42.15 ug/ml

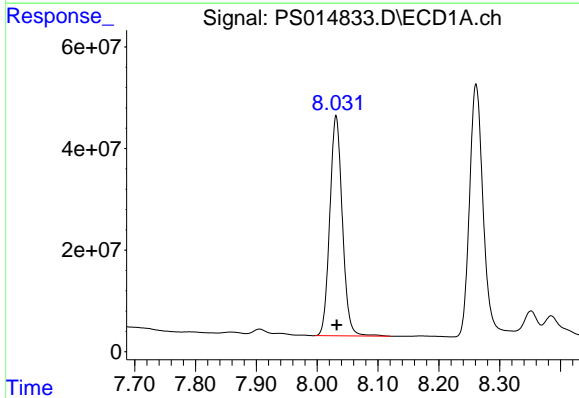


#7 MCPA  
 R.T.: 7.656 min  
 Delta R.T.: -0.014 min  
 Response: 285694865  
 Conc: 45.91 ug/ml

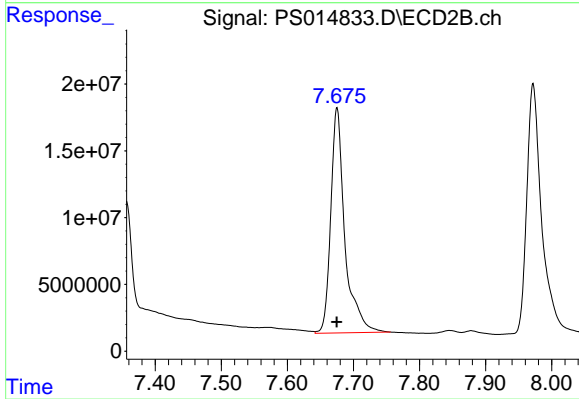
Instrument :  
 ECD\_S  
 ClientSampled :



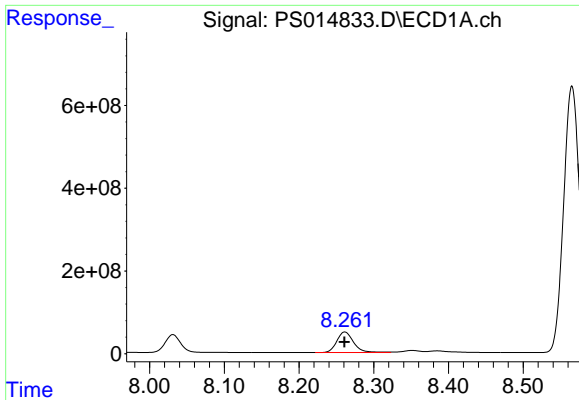
#7 MCPA  
 R.T.: 7.356 min  
 Delta R.T.: -0.014 min  
 Response: 262698833  
 Conc: 108.17 ug/ml



#8 DICHLORPROP  
 R.T.: 8.031 min  
 Delta R.T.: -0.001 min  
 Response: 621397682  
 Conc: 444.07 ng/ml



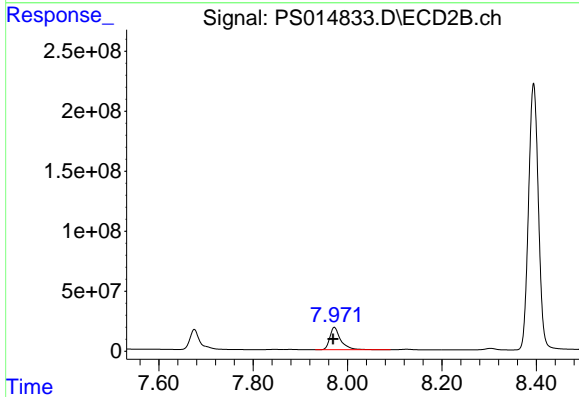
#8 DICHLORPROP  
 R.T.: 7.675 min  
 Delta R.T.: 0.000 min  
 Response: 250245593  
 Conc: 495.71 ng/ml



#9 2,4-D

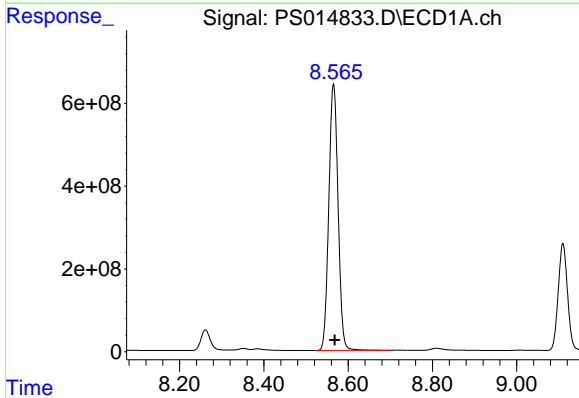
R.T.: 8.261 min  
Delta R.T.: 0.000 min  
Response: 782036966  
Conc: 491.85 ng/ml

Instrument :  
ECD\_S  
ClientSampleId :



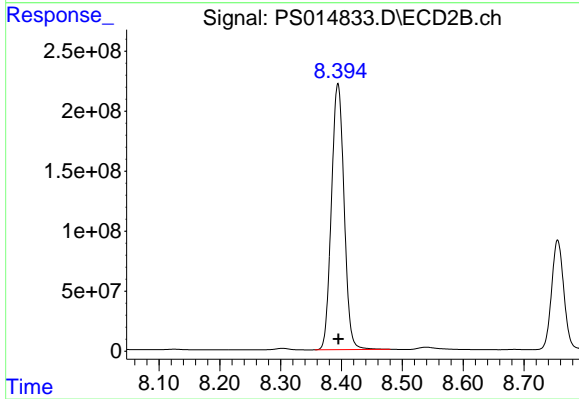
#9 2,4-D

R.T.: 7.972 min  
Delta R.T.: 0.002 min  
Response: 297146085  
Conc: 534.34 ng/ml



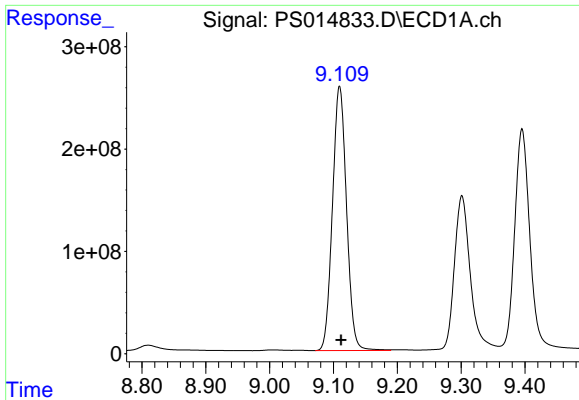
#10 Pentachlorophenol

R.T.: 8.565 min  
Delta R.T.: -0.003 min  
Response: 9821515270  
Conc: 467.32 ng/ml



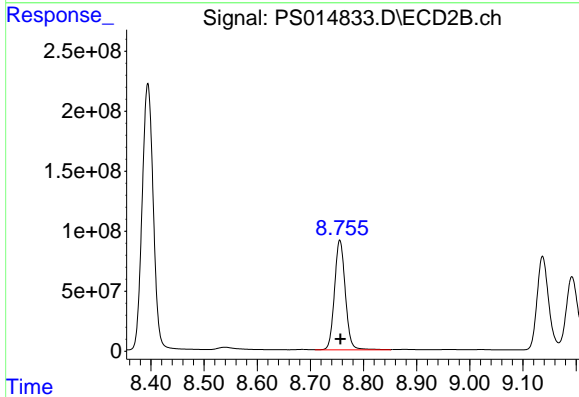
#10 Pentachlorophenol

R.T.: 8.394 min  
Delta R.T.: 0.000 min  
Response: 3210792921  
Conc: 477.62 ng/ml

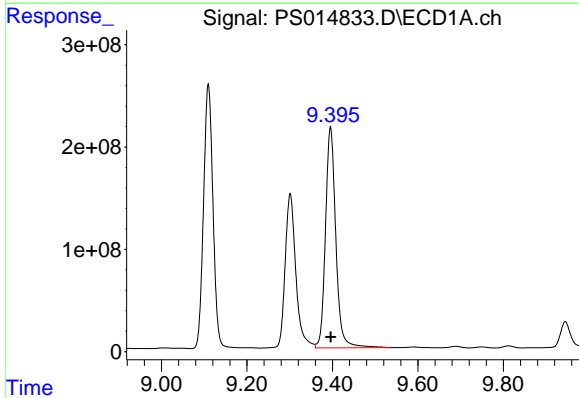


#11 2,4,5-TP (SILVEX)  
 R.T.: 9.110 min  
 Delta R.T.: -0.002 min  
 Response: 3951150324  
 Conc: 482.65 ng/ml

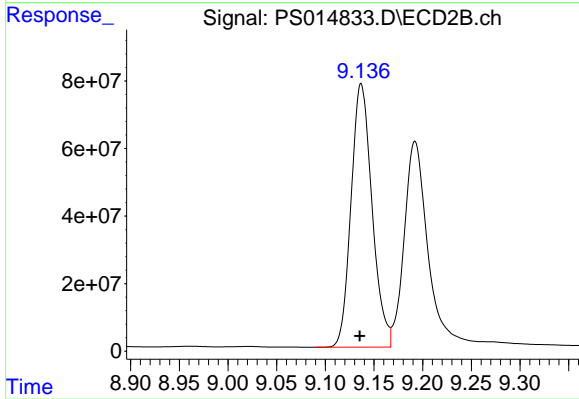
Instrument :  
 ECD\_S  
 ClientSampled :



#11 2,4,5-TP (SILVEX)  
 R.T.: 8.755 min  
 Delta R.T.: 0.000 min  
 Response: 1288375170  
 Conc: 471.64 ng/ml

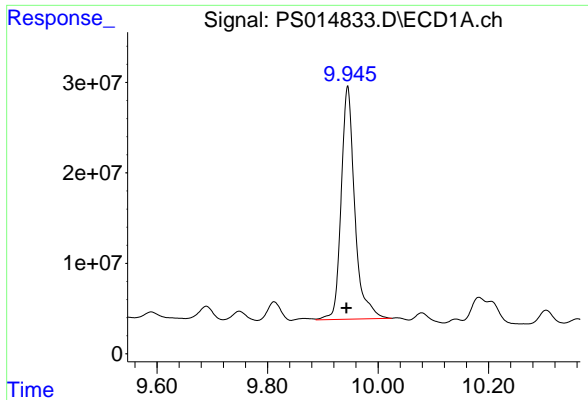


#12 2,4,5-T  
 R.T.: 9.396 min  
 Delta R.T.: 0.000 min  
 Response: 3620546485  
 Conc: 440.13 ng/ml



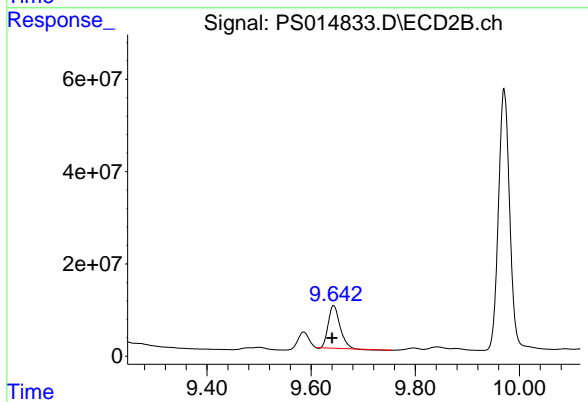
#12 2,4,5-T  
 R.T.: 9.137 min  
 Delta R.T.: 0.002 min  
 Response: 1170256373  
 Conc: 447.42 ng/ml



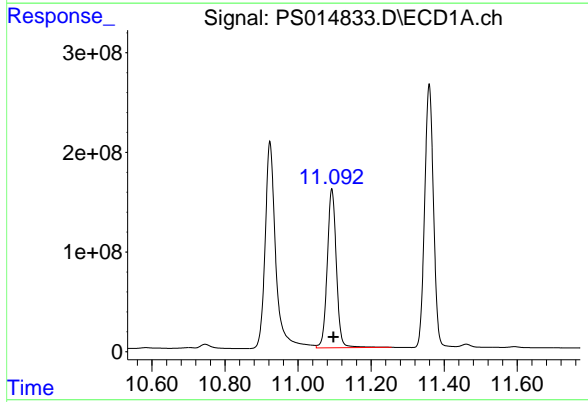


#13 2,4-DB  
 R.T.: 9.945 min  
 Delta R.T.: 0.002 min  
 Response: 440466127  
 Conc: 289.45 ng/ml

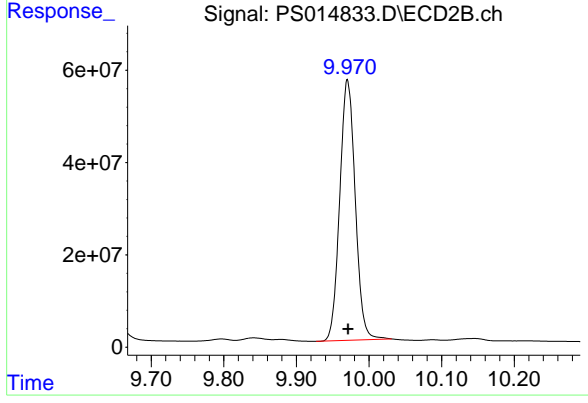
Instrument :  
 ECD\_S  
 ClientSampled :



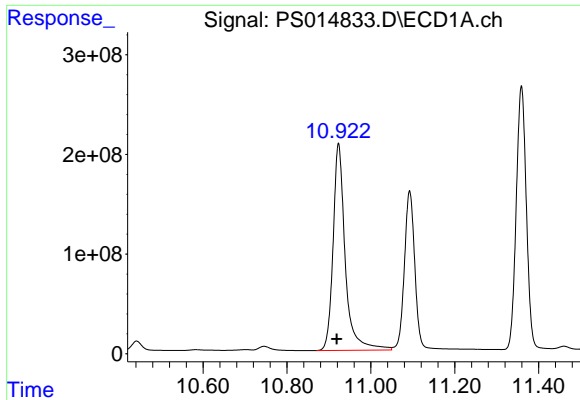
#13 2,4-DB  
 R.T.: 9.643 min  
 Delta R.T.: 0.003 min  
 Response: 142625772  
 Conc: 411.18 ng/ml



#14 DINOSEB  
 R.T.: 11.093 min  
 Delta R.T.: -0.004 min  
 Response: 2765703094  
 Conc: 429.21 ng/ml

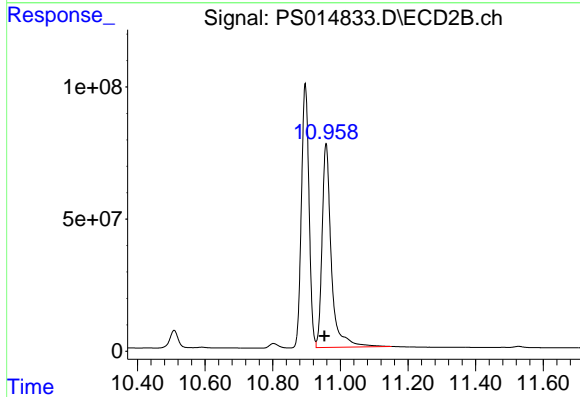


#14 DINOSEB  
 R.T.: 9.970 min  
 Delta R.T.: 0.000 min  
 Response: 837719334  
 Conc: 435.03 ng/ml

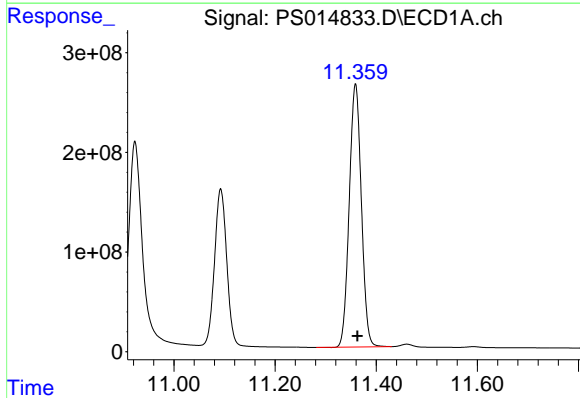


#15 Picloram  
 R.T.: 10.923 min  
 Delta R.T.: 0.004 min  
 Response: 4182598570  
 Conc: 373.84 ng/ml

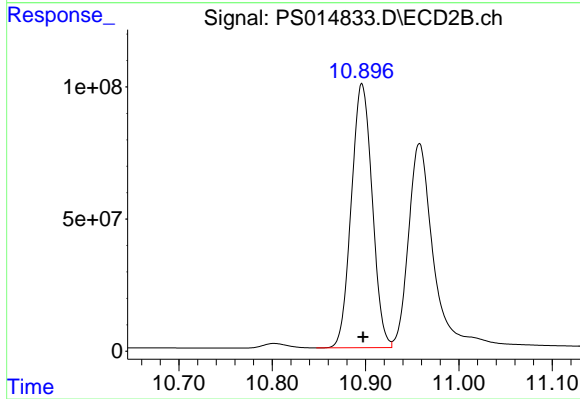
Instrument :  
 ECD\_S  
 ClientSampled :



#15 Picloram  
 R.T.: 10.958 min  
 Delta R.T.: 0.005 min  
 Response: 1463785940  
 Conc: 390.35 ng/ml



#16 DCPA  
 R.T.: 11.359 min  
 Delta R.T.: -0.004 min  
 Response: 4380112537  
 Conc: 355.47 ng/ml



#16 DCPA  
 R.T.: 10.896 min  
 Delta R.T.: -0.001 min  
 Response: 1550938856  
 Conc: 381.94 ng/ml