

Data Path : Z:\pestpcbsrv\HPCHEM1\ECD\_S\Data\PS042821\  
 Data File : PS014841.D  
 Signal(s) : Signal #1: ECD1A.ch Signal #2: ECD2B.ch  
 Acq On : 28 Apr 2021 13:52  
 Operator : DD\AJ  
 Sample : I.BLK  
 Misc :  
 ALS Vial : 2 Sample Multiplier: 1

Instrument :  
 ECD\_S  
 ClientSampleId :

Integration File signal 1: autoint1.e  
 Integration File signal 2: autoint2.e  
 Quant Time: Apr 28 14:45:33 2021  
 Quant Method : Z:\pestpcbsrv\HPCHEM1\ECD\_S\Method\PS040821.M  
 Quant Title : 8080.M  
 QLast Update : Thu Apr 08 14:34:06 2021  
 Response via : Initial Calibration  
 Integrator: ChemStation

Volume Inj. : 2 µl  
 Signal #1 Phase : Rtx-CLPesticides Signal #2 Phase: Rtx-CLPesticides2  
 Signal #1 Info : 30M x 0.32mm x0.5 Signal #2 Info : 30M x 0.32mm x 0.25µm

Compound	RT#1	RT#2	Resp#1	Resp#2	ng/ml	ng/ml
-----						
System Monitoring Compounds						
4) S 2,4-DCAA	7.160	6.887	707.7E6	239.2E6	465.247	513.935
Target Compounds						
2) T 3,5-DICHL...	6.439f	0.000	5873535	0	2.835	N.D. #
6) T MCP	0.000	7.124	0	2743545	N.D.	1.629
9) T 2,4-D	8.331f	0.000	6532892	0	4.109	N.D. #
15) T Picloram	10.921	0.000	6452240	0	<MDL	N.D. #
-----						

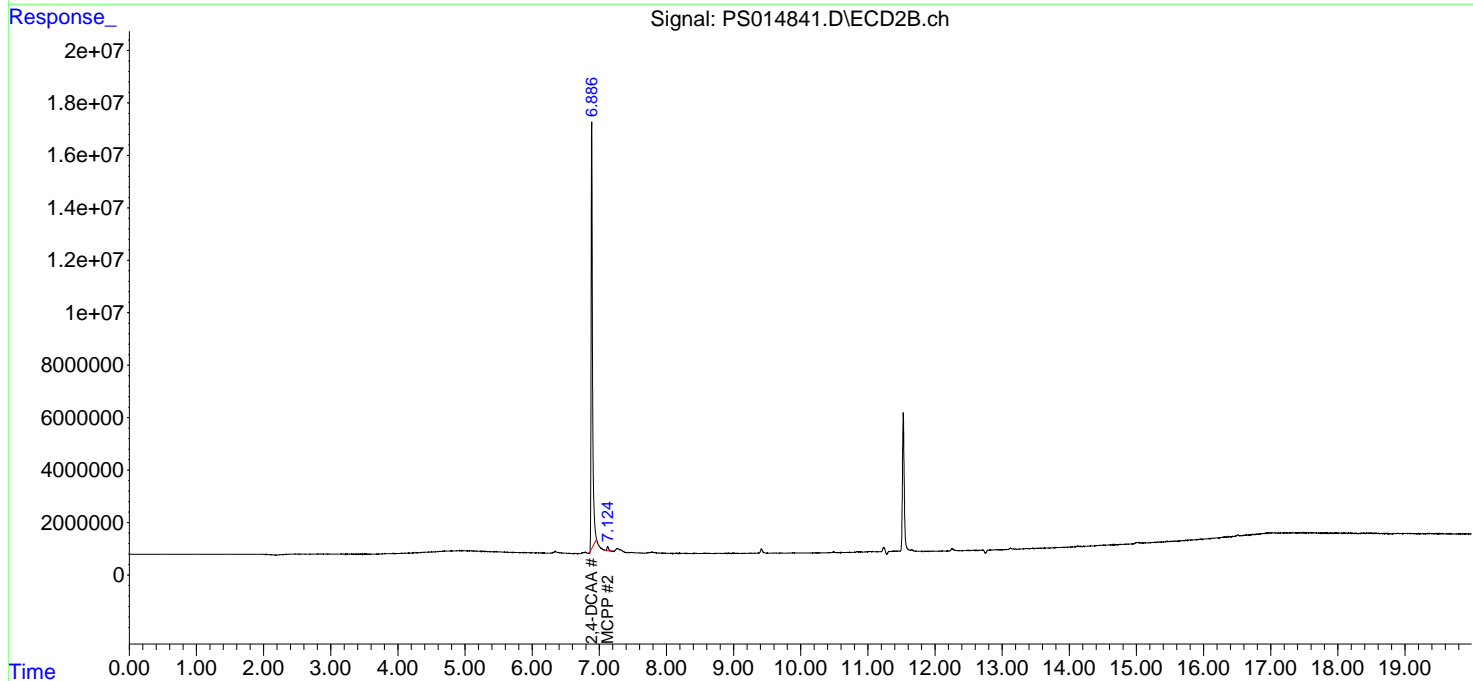
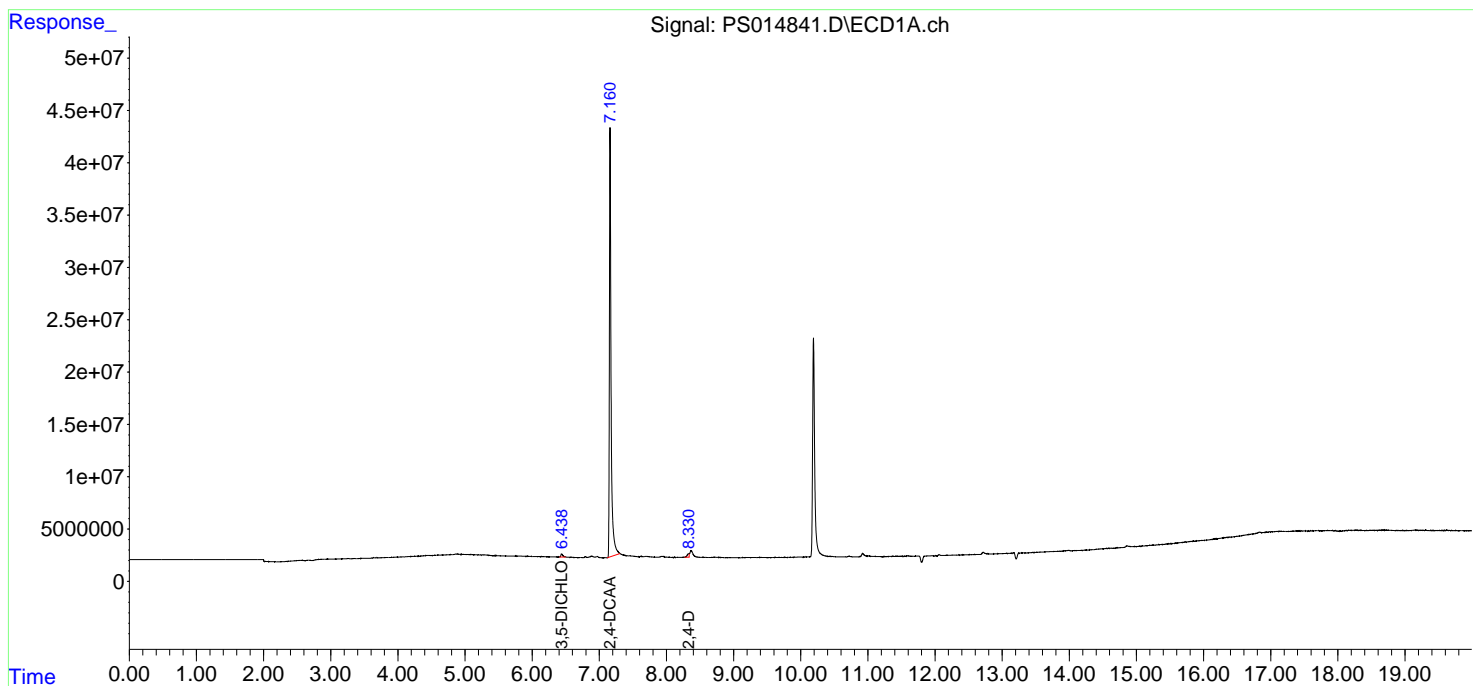
(f)=RT Delta > 1/2 Window (#)=Amounts differ by > 25% (m)=manual int.

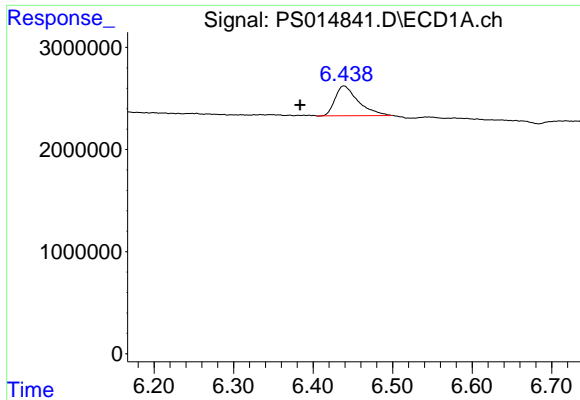
Data Path : Z:\pestpcbsrv\HPCHEM1\ECD\_S\Data\PS042821\  
 Data File : PS014841.D  
 Signal(s) : Signal #1: ECD1A.ch Signal #2: ECD2B.ch  
 Acq On : 28 Apr 2021 13:52  
 Operator : DD\AJ  
 Sample : I.BLK  
 Misc :  
 ALS Vial : 2 Sample Multiplier: 1

Instrument :  
 ECD\_S  
 ClientSampled :

Integration File signal 1: autoint1.e  
 Integration File signal 2: autoint2.e  
 Quant Time: Apr 28 14:45:33 2021  
 Quant Method : Z:\pestpcbsrv\HPCHEM1\ECD\_S\Method\PS040821.M  
 Quant Title : 8080.M  
 QLast Update : Thu Apr 08 14:34:06 2021  
 Response via : Initial Calibration  
 Integrator: ChemStation

Volume Inj. : 2 µl  
 Signal #1 Phase : Rtx-CLPesticides Signal #2 Phase: Rtx-CLPesticides2  
 Signal #1 Info : 30M x 0.32mm x 0.5 Signal #2 Info : 30M x 0.32mm x 0.25µm

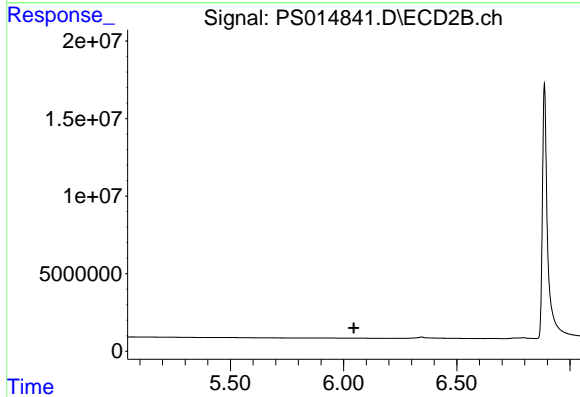




#2 3,5-DICHLORO BENZOIC ACID

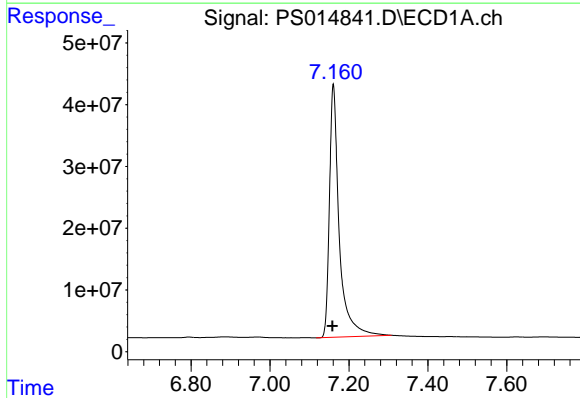
R.T.: 6.439 min  
 Delta R.T.: 0.055 min  
 Response: 5873535  
 Conc: 2.83 ng/ml

Instrument :  
 ECD\_S  
 ClientSampleId :



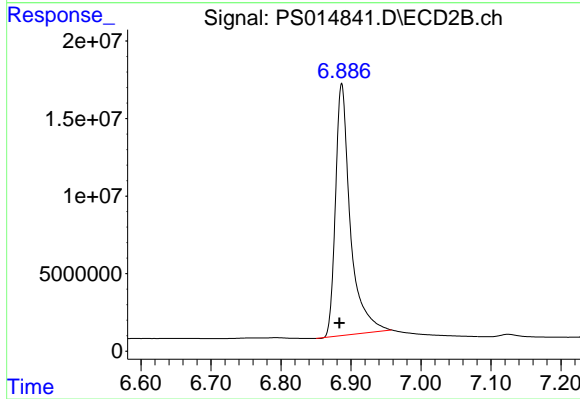
#2 3,5-DICHLORO BENZOIC ACID

R.T.: 0.000 min  
 Exp R.T. : 6.045 min  
 Response: 0  
 Conc: N.D.



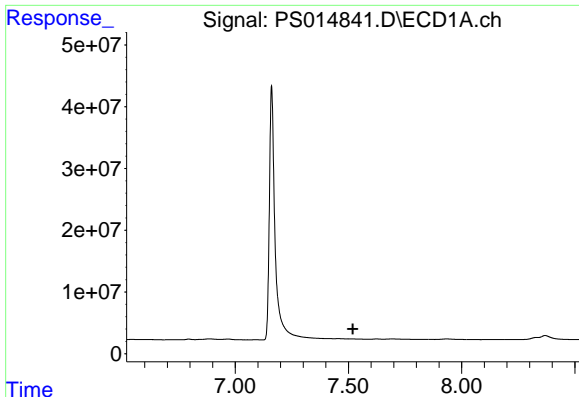
#4 2,4-DCAA

R.T.: 7.160 min  
 Delta R.T.: 0.002 min  
 Response: 707730937  
 Conc: 465.25 ng/ml



#4 2,4-DCAA

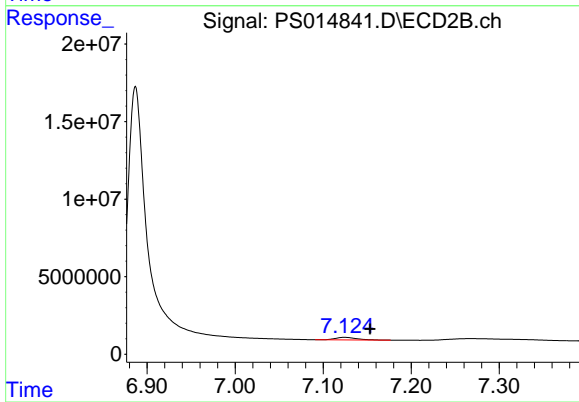
R.T.: 6.887 min  
 Delta R.T.: 0.003 min  
 Response: 239213447  
 Conc: 513.93 ng/ml



#6 MCPP

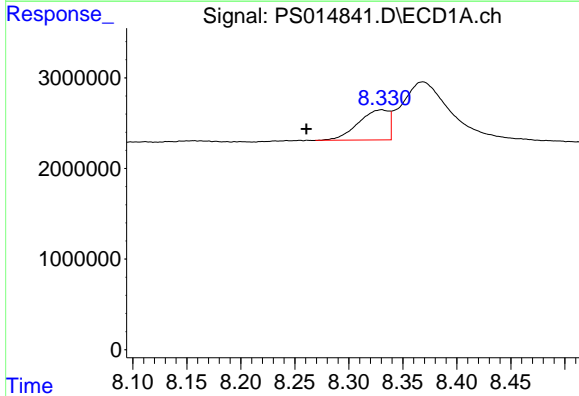
R.T.: 0.000 min  
 Exp R.T.: 7.520 min  
 Response: 0  
 Conc: N.D.

Instrument :  
 ECD\_S  
 ClientSampleId :



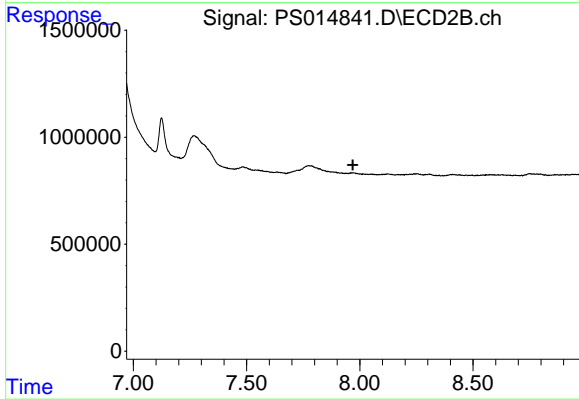
#6 MCPP

R.T.: 7.124 min  
 Delta R.T.: -0.029 min  
 Response: 2743545  
 Conc: 1.63 ug/ml



#9 2,4-D

R.T.: 8.331 min  
 Delta R.T.: 0.070 min  
 Response: 6532892  
 Conc: 4.11 ng/ml



#9 2,4-D

R.T.: 0.000 min  
 Exp R.T.: 7.970 min  
 Response: 0  
 Conc: N.D.