

Data Path : Z:\pestpcbsrv\HPCHEM1\ECD_S\Data\PS042821\
 Data File : PS014843.D
 Signal(s) : Signal #1: ECD1A.ch Signal #2: ECD2B.ch
 Acq On : 28 Apr 2021 16:46
 Operator : DD\AJ
 Sample : M2176-10RE
 Misc :
 ALS Vial : 12 Sample Multiplier: 1

Instrument :
 ECD_S
 ClientSampleId :

Integration File signal 1: autoint1.e
 Integration File signal 2: autoint2.e
 Quant Time: Apr 28 17:17:08 2021
 Quant Method : Z:\pestpcbsrv\HPCHEM1\ECD_S\Method\PS040821.M
 Quant Title : 8080.M
 QLast Update : Thu Apr 08 14:34:06 2021
 Response via : Initial Calibration
 Integrator: ChemStation

Volume Inj. : 2 µl
 Signal #1 Phase : Rtx-CLPesticides Signal #2 Phase: Rtx-CLPesticides2
 Signal #1 Info : 30M x 0.32mm x0.5 Signal #2 Info : 30M x 0.32mm x 0.25µm

	Compound	RT#1	RT#2	Resp#1	Resp#2	ng/ml	ng/ml

System Monitoring Compounds							
4) S	2,4-DCAA	7.156	6.881	841.9E6	304.7E6	553.450	654.584
Target Compounds							
1) T	Dalapon	2.962f	2.563	46997877	46374348	26.064	71.255 #
2) T	3,5-DICHL...	0.000	6.073	0	53857278	N.D.	73.445
3) T	4-Nitroph...	7.051f	6.515	15475644	4173471	19.044	14.782
5) T	DICAMBA	7.332	7.016	15762859	5919749	2.709	2.927
6) T	MCP	7.504	7.092f	3536206	624053	<MDL	<MDL #
7) T	MCPA	7.697	0.000	1988873	0	<MDL	N.D. #
8) T	DICHLORPROP	0.000	7.716f	0	8007397	N.D.	15.862
10) T	Pentachlo...	8.569	8.394	10057320	3774013	<MDL	<MDL #
11) T	2,4,5-TP ...	9.114	8.754	6892929	2390007	<MDL	<MDL #
12) T	2,4,5-T	9.411	9.151	9674407	2290462	1.176	<MDL #
13) T	2,4-DB	9.963	9.586f	16308155	2391904	10.717	6.896 #
14) T	DINOSEB	11.073	10.001	32349180	6660216	5.020	3.459 #
15) T	Picloram	10.942	10.971	185.1E6	67398654	16.540	17.973
16) T	DCPA	11.364	10.897	12681148	6612411	1.029	1.628 #

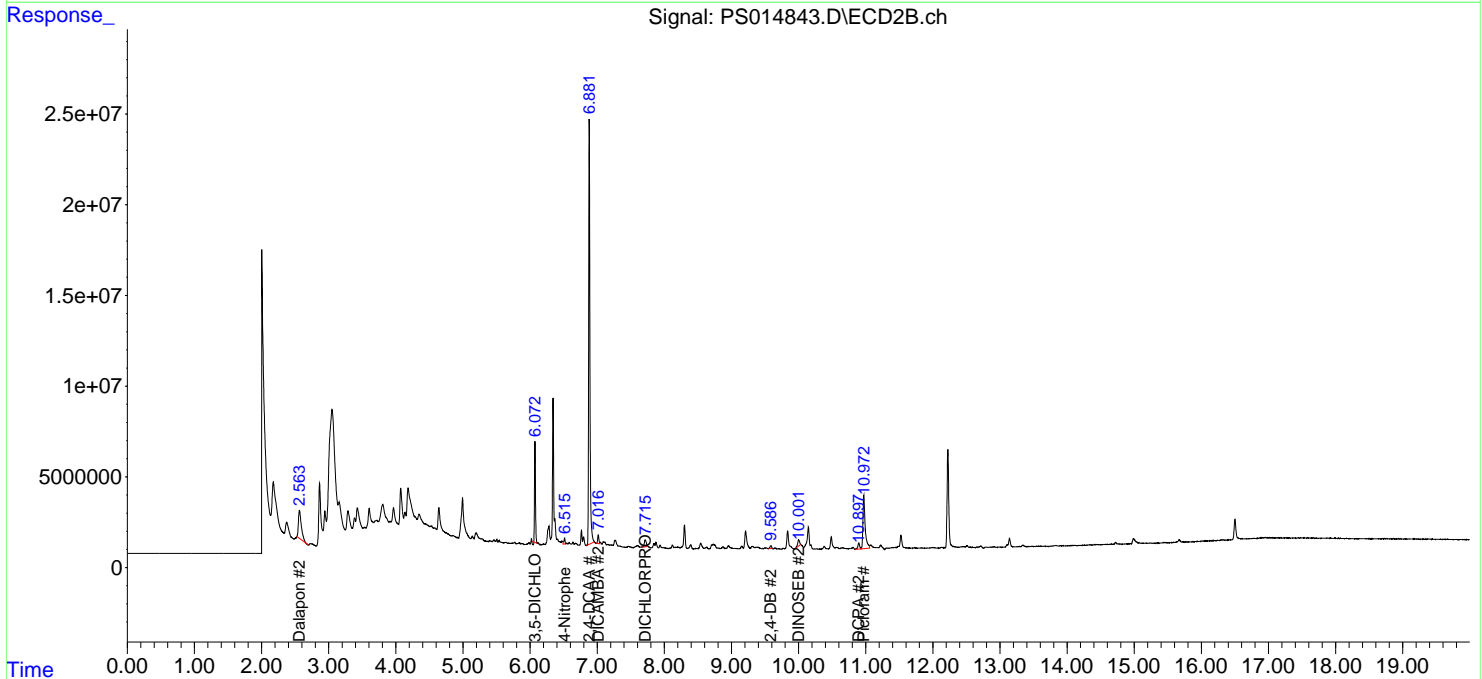
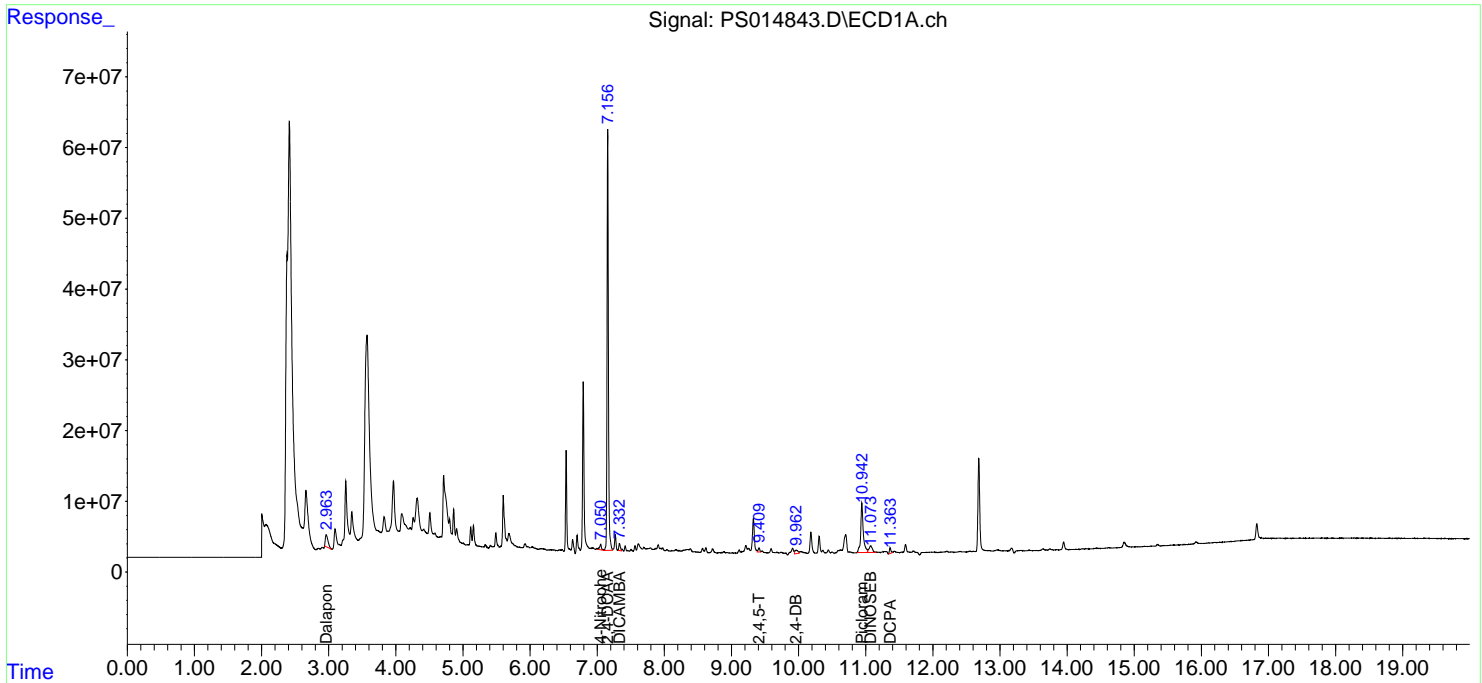
(f)=RT Delta > 1/2 Window (#)=Amounts differ by > 25% (m)=manual int.

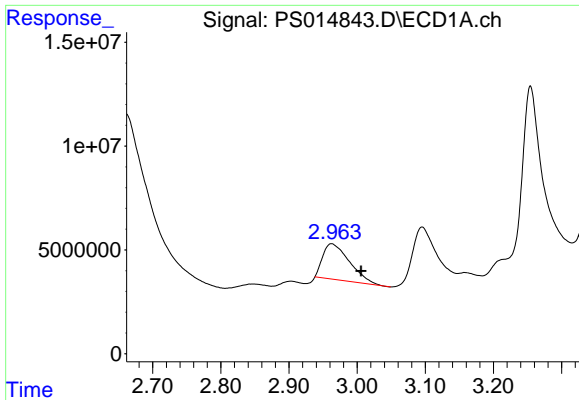
Data Path : Z:\pestpcbsrv\HPCHEM1\ECD_S\Data\PS042821\
 Data File : PS014843.D
 Signal(s) : Signal #1: ECD1A.ch Signal #2: ECD2B.ch
 Acq On : 28 Apr 2021 16:46
 Operator : DD\AJ
 Sample : M2176-10RE
 Misc :
 ALS Vial : 12 Sample Multiplier: 1

Instrument :
 ECD_S
 ClientSampled :

Integration File signal 1: autoint1.e
 Integration File signal 2: autoint2.e
 Quant Time: Apr 28 17:17:08 2021
 Quant Method : Z:\pestpcbsrv\HPCHEM1\ECD_S\Method\PS040821.M
 Quant Title : 8080.M
 QLast Update : Thu Apr 08 14:34:06 2021
 Response via : Initial Calibration
 Integrator: ChemStation

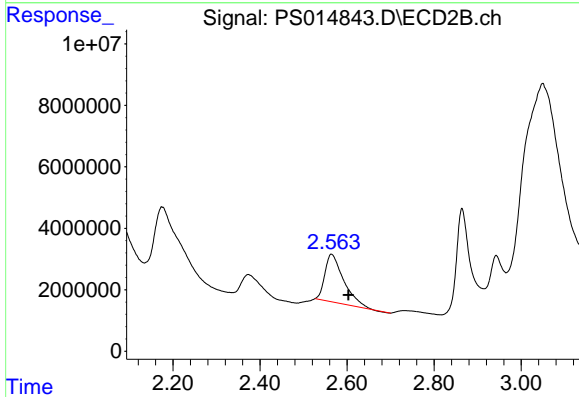
Volume Inj. : 2 µl
 Signal #1 Phase : Rtx-CLPesticides Signal #2 Phase: Rtx-CLPesticides2
 Signal #1 Info : 30M x 0.32mm x0.5 Signal #2 Info : 30M x 0.32mm x 0.25µm



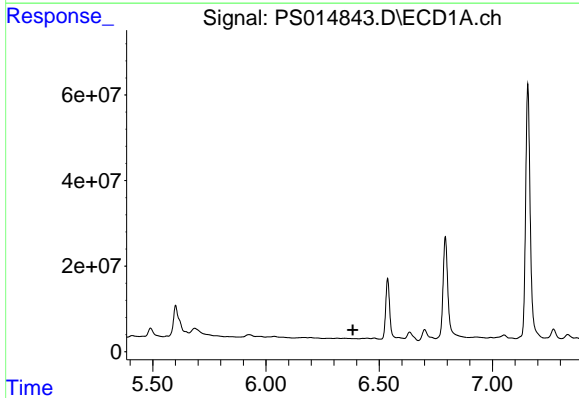


#1 Dalapon
 R.T.: 2.962 min
 Delta R.T.: -0.044 min
 Response: 46997877
 Conc: 26.06 ng/ml

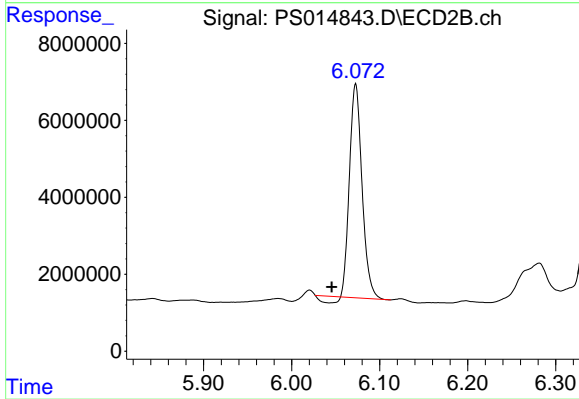
Instrument :
 ECD_S
 ClientSampled :



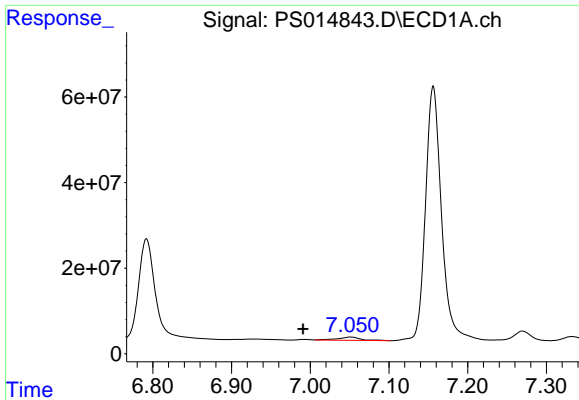
#1 Dalapon
 R.T.: 2.563 min
 Delta R.T.: -0.039 min
 Response: 46374348
 Conc: 71.25 ng/ml



#2 3,5-DICHLOROBENZOIC ACID
 R.T.: 0.000 min
 Exp R.T. : 6.384 min
 Response: 0
 Conc: N.D.

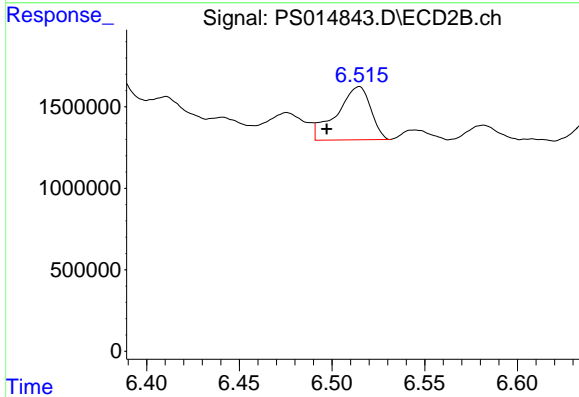


#2 3,5-DICHLOROBENZOIC ACID
 R.T.: 6.073 min
 Delta R.T.: 0.027 min
 Response: 53857278
 Conc: 73.45 ng/ml

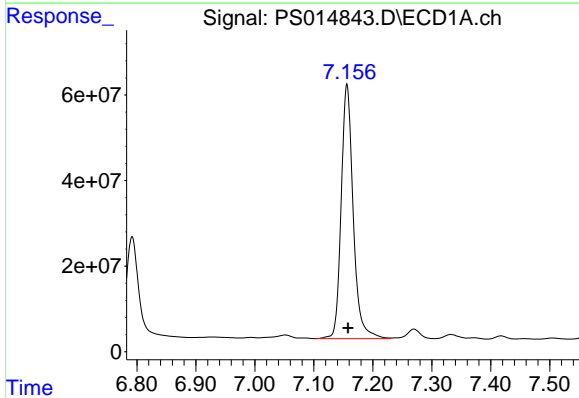


#3 4-Nitrophenol
 R.T.: 7.051 min
 Delta R.T.: 0.060 min
 Response: 15475644
 Conc: 19.04 ng/ml

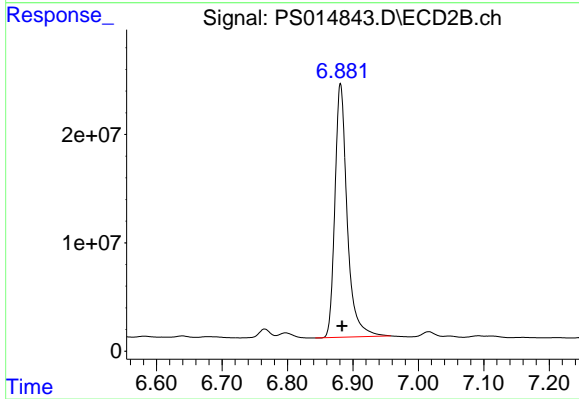
Instrument :
 ECD_S
 ClientSampleId :



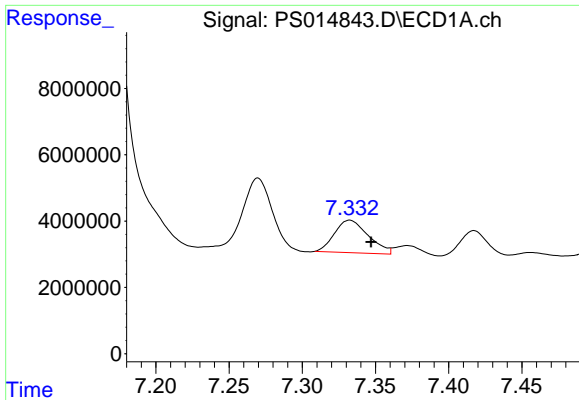
#3 4-Nitrophenol
 R.T.: 6.515 min
 Delta R.T.: 0.017 min
 Response: 4173471
 Conc: 14.78 ng/ml



#4 2,4-DCAA
 R.T.: 7.156 min
 Delta R.T.: -0.002 min
 Response: 841905616
 Conc: 553.45 ng/ml



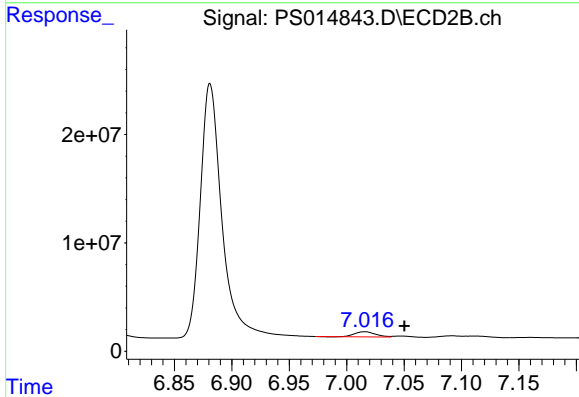
#4 2,4-DCAA
 R.T.: 6.881 min
 Delta R.T.: -0.003 min
 Response: 304679395
 Conc: 654.58 ng/ml



#5 DICAMBA

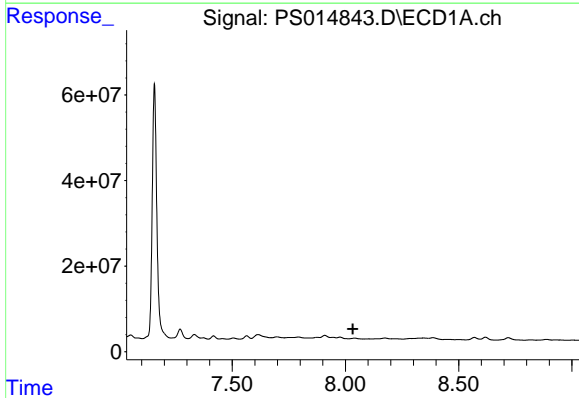
R.T.: 7.332 min
 Delta R.T.: -0.015 min
 Response: 15762859
 Conc: 2.71 ng/ml

Instrument :
 ECD_S
 ClientSampled :



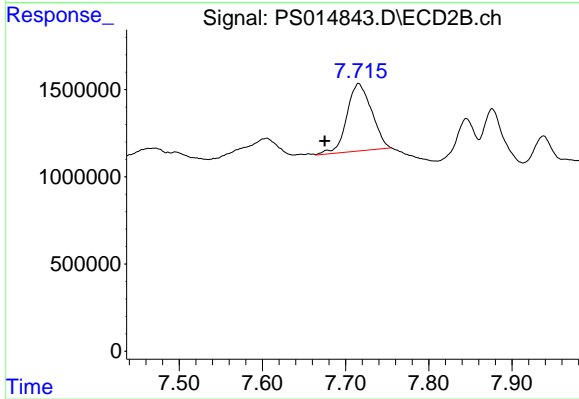
#5 DICAMBA

R.T.: 7.016 min
 Delta R.T.: -0.034 min
 Response: 5919749
 Conc: 2.93 ng/ml



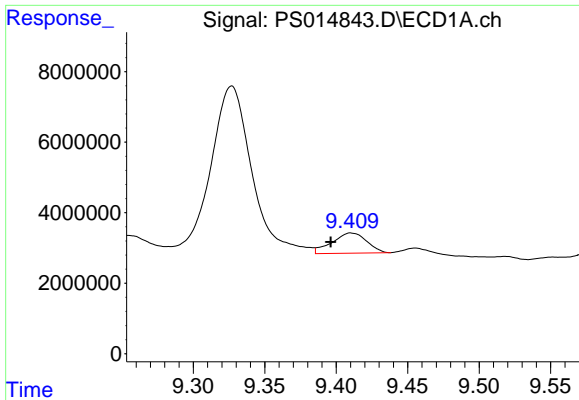
#8 DICHLORPROP

R.T.: 0.000 min
 Exp R.T. : 8.033 min
 Response: 0
 Conc: N.D.



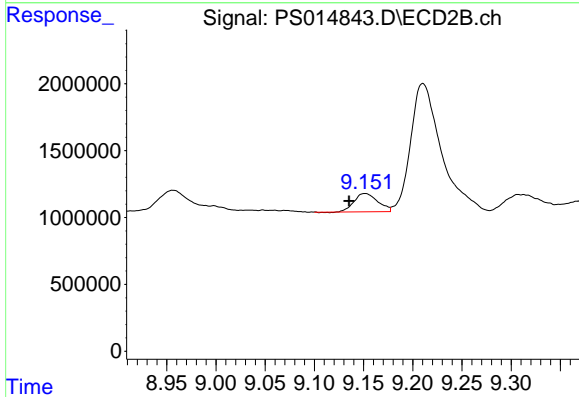
#8 DICHLORPROP

R.T.: 7.716 min
 Delta R.T.: 0.041 min
 Response: 8007397
 Conc: 15.86 ng/ml

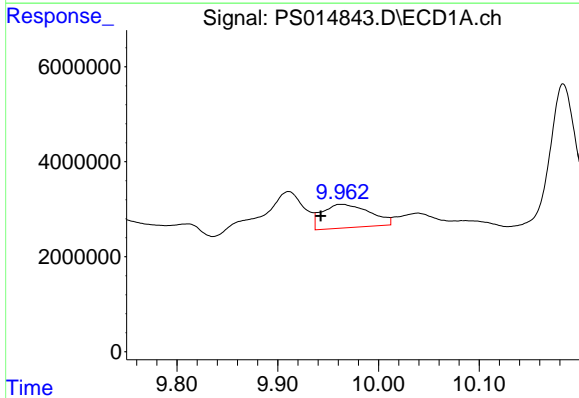


#12 2,4,5-T
 R.T.: 9.411 min
 Delta R.T.: 0.015 min
 Response: 9674407
 Conc: 1.18 ng/ml

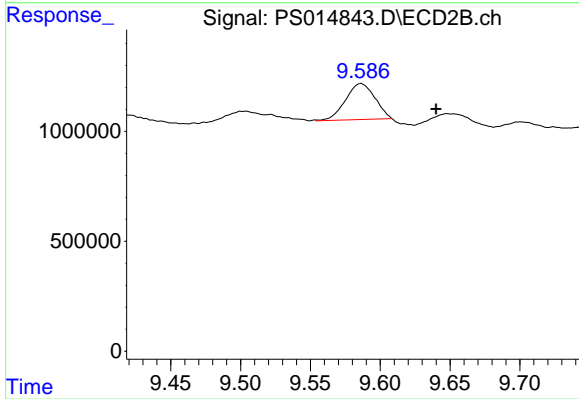
Instrument :
 ECD_S
 ClientSampleId :



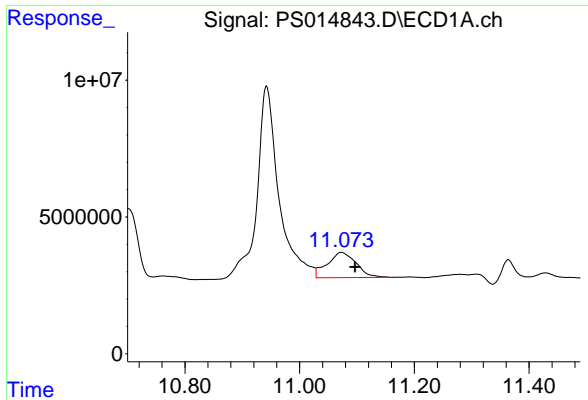
#12 2,4,5-T
 R.T.: 9.151 min
 Delta R.T.: 0.016 min
 Response: 2290462
 Conc: N.D.



#13 2,4-DB
 R.T.: 9.963 min
 Delta R.T.: 0.020 min
 Response: 16308155
 Conc: 10.72 ng/ml

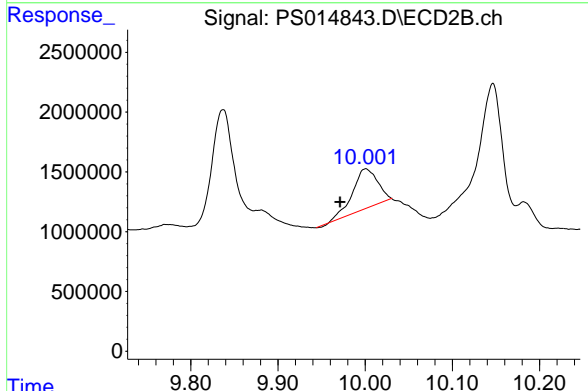


#13 2,4-DB
 R.T.: 9.586 min
 Delta R.T.: -0.054 min
 Response: 2391904
 Conc: 6.90 ng/ml

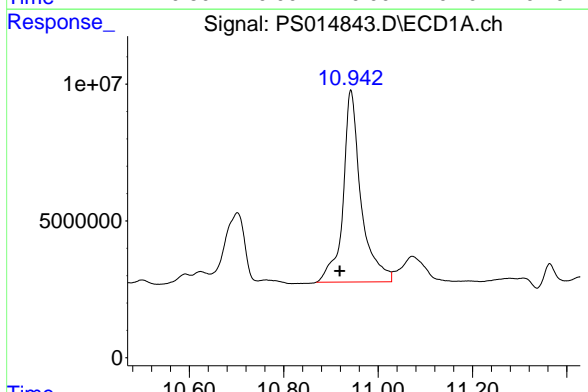


#14 DINOSEB
 R.T.: 11.073 min
 Delta R.T.: -0.024 min
 Response: 32349180
 Conc: 5.02 ng/ml

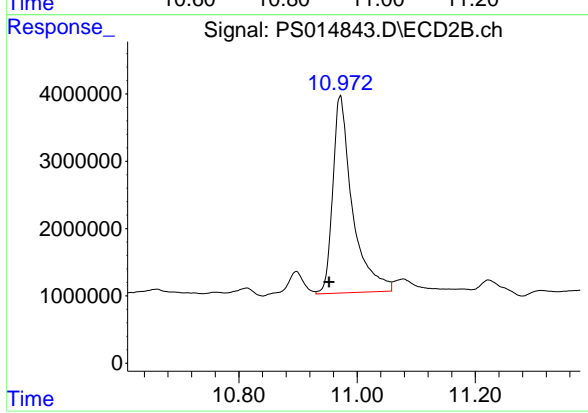
Instrument :
 ECD_S
 ClientSampleId :



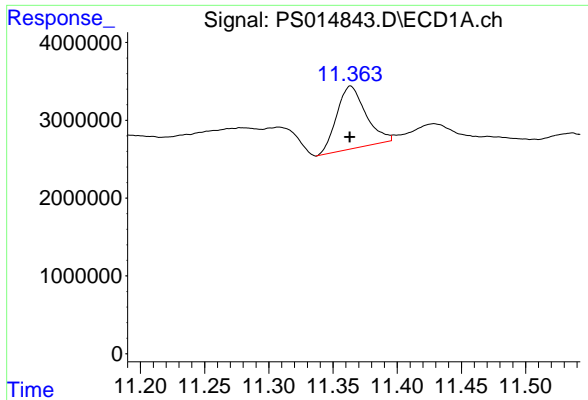
#14 DINOSEB
 R.T.: 10.001 min
 Delta R.T.: 0.029 min
 Response: 6660216
 Conc: 3.46 ng/ml



#15 Picloram
 R.T.: 10.942 min
 Delta R.T.: 0.024 min
 Response: 185058982
 Conc: 16.54 ng/ml



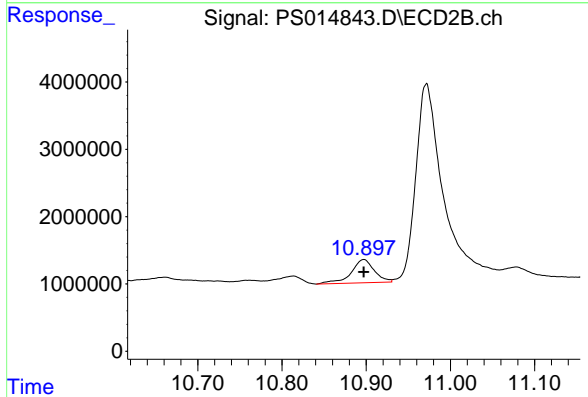
#15 Picloram
 R.T.: 10.971 min
 Delta R.T.: 0.019 min
 Response: 67398654
 Conc: 17.97 ng/ml



#16 DCPA

R.T.: 11.364 min
Delta R.T.: 0.000 min
Response: 12681148
Conc: 1.03 ng/ml

Instrument :
ECD_S
ClientSampleId :



#16 DCPA

R.T.: 10.897 min
Delta R.T.: 0.000 min
Response: 6612411
Conc: 1.63 ng/ml