

Data Path : Z:\pestpcbsrv\HPCHEM1\ECD_S\Data\PS042921\
 Data File : PS014856.D
 Signal(s) : Signal #1: ECD1A.ch Signal #2: ECD2B.ch
 Acq On : 29 Apr 2021 19:13
 Operator : DD\AJ
 Sample : M2196-02MS
 Misc :
 ALS Vial : 8 Sample Multiplier: 1

Instrument :
 ECD_S
 ClientSampleId :
 WALL-D-4075-AMS

Manual Integrations
 APPROVED

Ankita
 4/30/2021 2:29:32 PM

Integration File signal 1: autoint1.e
 Integration File signal 2: autoint2.e
 Quant Time: Apr 30 02:12:25 2021
 Quant Method : Z:\pestpcbsrv\HPCHEM1\ECD_S\Method\PS040821.M
 Quant Title : 8080.M
 QLast Update : Thu Apr 08 14:34:06 2021
 Response via : Initial Calibration
 Integrator: ChemStation

Volume Inj. : 2 µl
 Signal #1 Phase : Rtx-CLPesticides Signal #2 Phase: Rtx-CLPesticides2
 Signal #1 Info : 30M x 0.32mm x0.5 Signal #2 Info : 30M x 0.32mm x 0.25µm

	Compound	RT#1	RT#2	Resp#1	Resp#2	ng/ml	ng/ml

System Monitoring Compounds							
4) S	2,4-DCAA	7.157	6.885	877.2E6	320.9E6	576.622	689.488
Target Compounds							
1) T	Dalapon	3.007	2.606	799.0E6	339.3E6	443.117	521.303
2) T	3,5-DICHL...	6.383	6.048	1269.2E6	380.0E6	612.555	518.175
5) T	DICAMBA	7.345	7.050	3185.7E6	1128.2E6	547.525	557.814
6) T	MCPD	7.509	7.144	252.2E6	100.5E6	57.915	59.696
7) T	MCPA	7.657	7.358	372.5E6	147.9E6	59.857	60.881m
8) T	DICHLORPROP	8.031	7.676	807.2E6	310.0E6	576.818	614.008
9) T	2,4-D	8.261	7.973	993.7E6	395.4E6	624.949	711.006
10) T	Pentachlo...	8.565	8.395	12466.3E6	4132.6E6	593.160	614.740
11) T	2,4,5-TP ...	9.110	8.756	5123.8E6	1715.7E6	625.890	628.075
12) T	2,4,5-T	9.396	9.136	4674.5E6	1544.8E6	568.249	590.641
13) T	2,4-DB	9.945	9.643	599.1E6	194.8E6	393.696	561.538 #
14) T	DINOSEB	11.092	9.971	3459.5E6	1065.8E6	536.887	553.456
15) T	Picloram	10.924	10.958	4571.7E6	1638.4E6	408.619	436.920
16) T	DCPA	11.358	10.896	5474.3E6	2052.0E6	444.266	505.324

(f)=RT Delta > 1/2 Window (#)=Amounts differ by > 25% (m)=manual int.

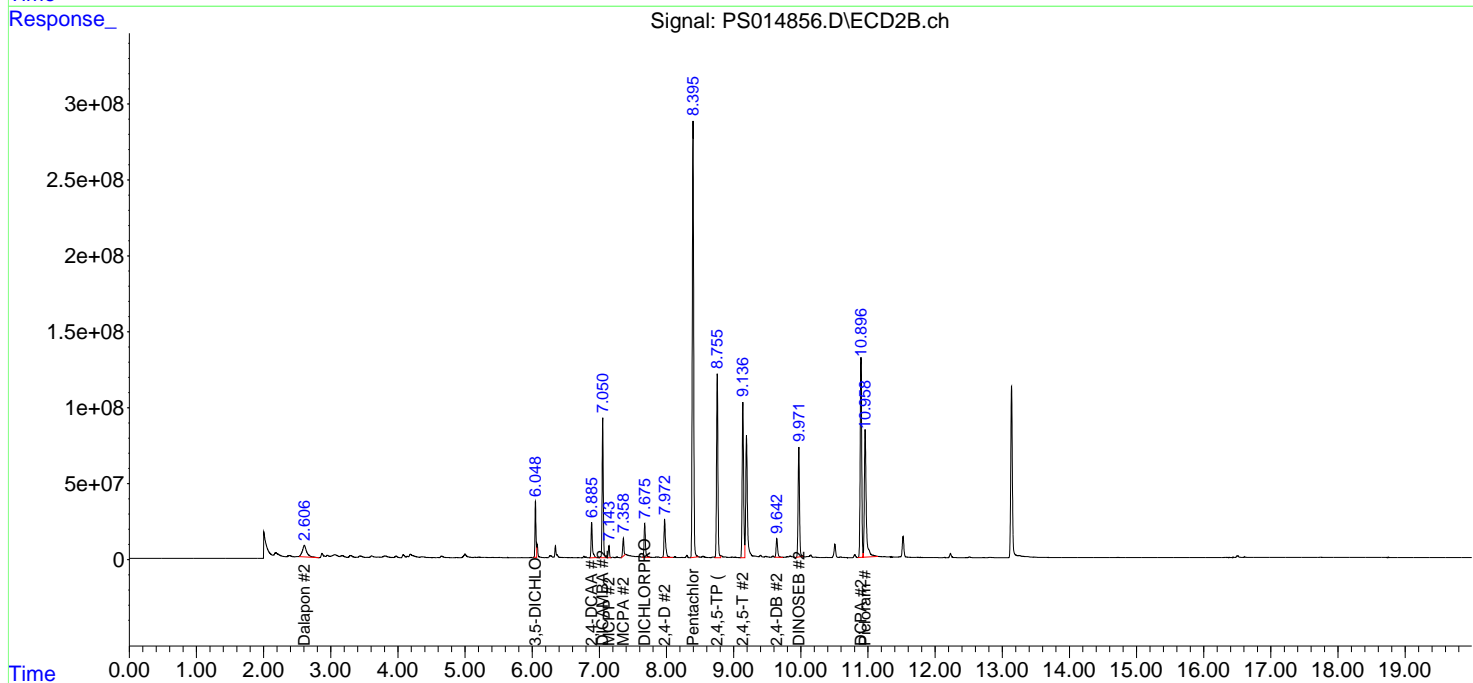
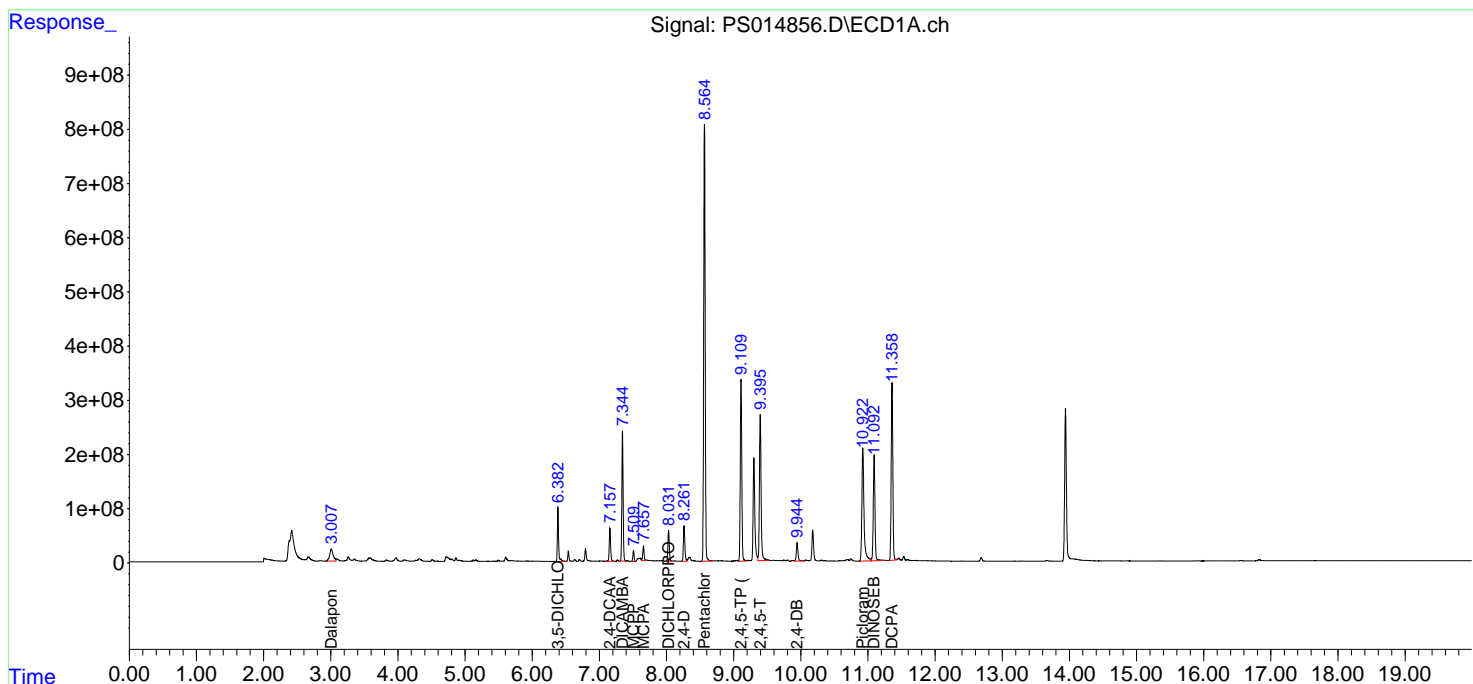
Data Path : Z:\pestpcbsrv\HPCHEM1\ECD_S\Data\PS042921\
 Data File : PS014856.D
 Signal(s) : Signal #1: ECD1A.ch Signal #2: ECD2B.ch
 Acq On : 29 Apr 2021 19:13
 Operator : DD\AJ
 Sample : M2196-02MS
 Misc :
 ALS Vial : 8 Sample Multiplier: 1

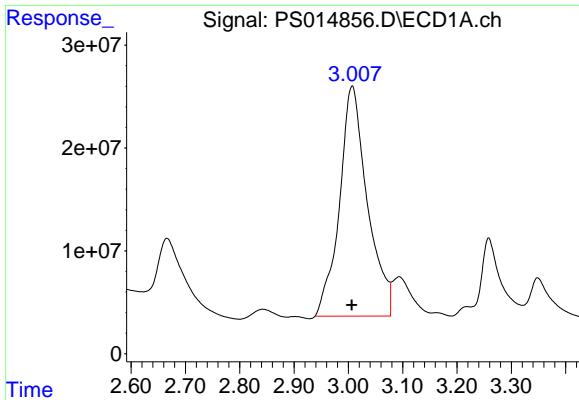
Instrument :
 ECD_S
Client Sampled :
 WALL-D-4075-AMS

Manual Integrations
APPROVED
 Ankita
 4/30/2021 2:29:32 PM

Integration File signal 1: autoint1.e
 Integration File signal 2: autoint2.e
 Quant Time: Apr 30 02:12:25 2021
 Quant Method : Z:\pestpcbsrv\HPCHEM1\ECD_S\Method\PS040821.M
 Quant Title : 8080.M
 QLast Update : Thu Apr 08 14:34:06 2021
 Response via : Initial Calibration
 Integrator: ChemStation

Volume Inj. : 2 µl
 Signal #1 Phase : Rtx-CLPesticides Signal #2 Phase: Rtx-CLPesticides2
 Signal #1 Info : 30M x 0.32mm x0.5 Signal #2 Info : 30M x 0.32mm x 0.25µm





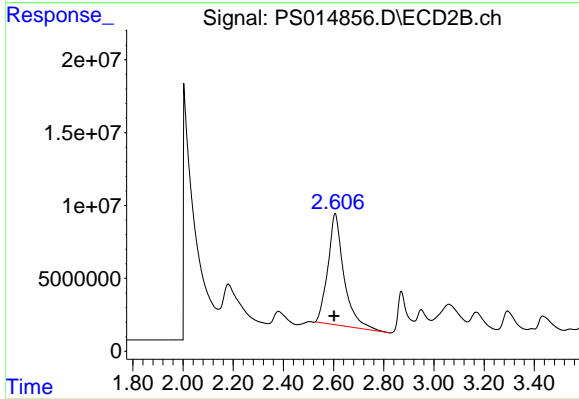
#1 Dalapon

R.T.: 3.007 min
 Delta R.T.: 0.001 min
 Response: 799016154
 Conc: 443.12 ng/ml

Instrument :
 ECD_S
 ClientSampleId :
 WALL-D-4075-AMS

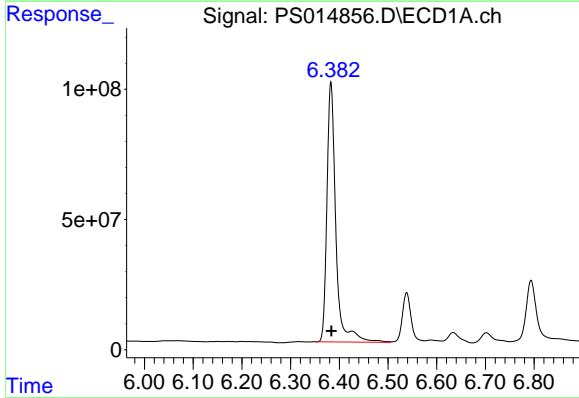
Manual Integrations
 APPROVED

Ankita
 4/30/2021 2:29:32 PM



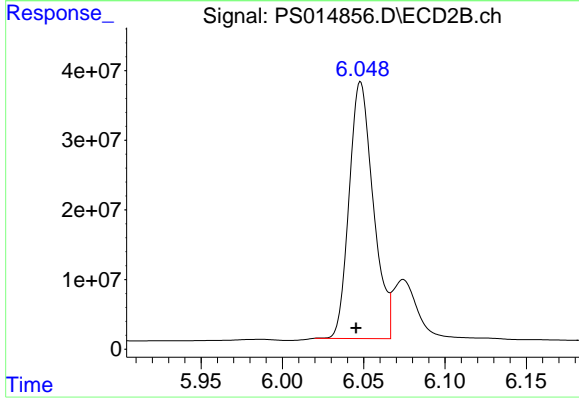
#1 Dalapon

R.T.: 2.606 min
 Delta R.T.: 0.004 min
 Response: 339276964
 Conc: 521.30 ng/ml



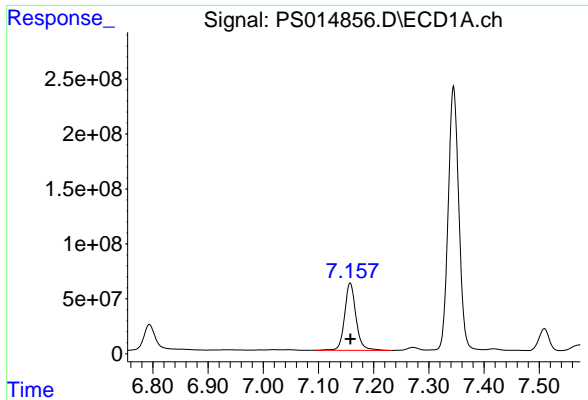
#2 3,5-DICHLOROBENZOIC ACID

R.T.: 6.383 min
 Delta R.T.: 0.000 min
 Response: 1269216513
 Conc: 612.56 ng/ml



#2 3,5-DICHLOROBENZOIC ACID

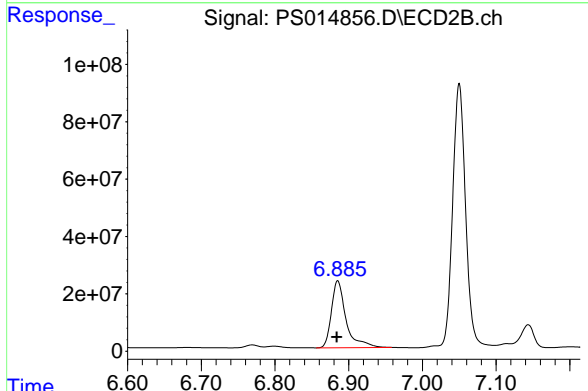
R.T.: 6.048 min
 Delta R.T.: 0.003 min
 Response: 379976279
 Conc: 518.18 ng/ml



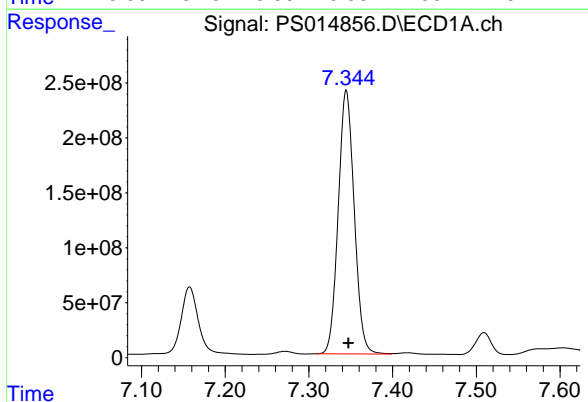
#4 2,4-DCAA
 R.T.: 7.157 min
 Delta R.T.: 0.000 min
 Response: 877154320
 Conc: 576.62 ng/ml

Instrument :
 ECD_S
 ClientSampleId :
 WALL-D-4075-AMS

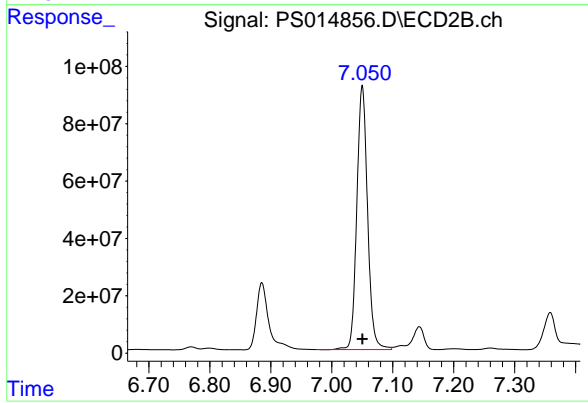
Manual Integrations
 APPROVED
 Ankita
 4/30/2021 2:29:32 PM



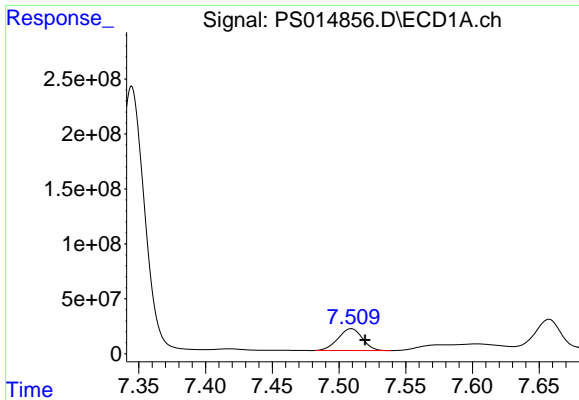
#4 2,4-DCAA
 R.T.: 6.885 min
 Delta R.T.: 0.002 min
 Response: 320925612
 Conc: 689.49 ng/ml



#5 DICAMBA
 R.T.: 7.345 min
 Delta R.T.: -0.002 min
 Response: 3185696430
 Conc: 547.53 ng/ml



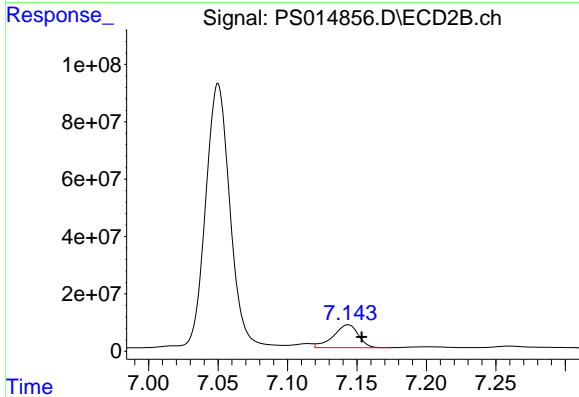
#5 DICAMBA
 R.T.: 7.050 min
 Delta R.T.: 0.000 min
 Response: 1128193104
 Conc: 557.81 ng/ml



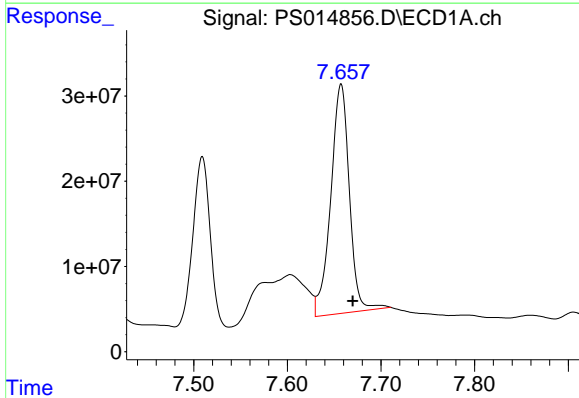
#6 MCPP
 R.T.: 7.509 min
 Delta R.T.: -0.011 min
 Response: 252175461
 Conc: 57.92 ug/ml

Instrument :
 ECD_S
 ClientSampleId :
 WALL-D-4075-AMS

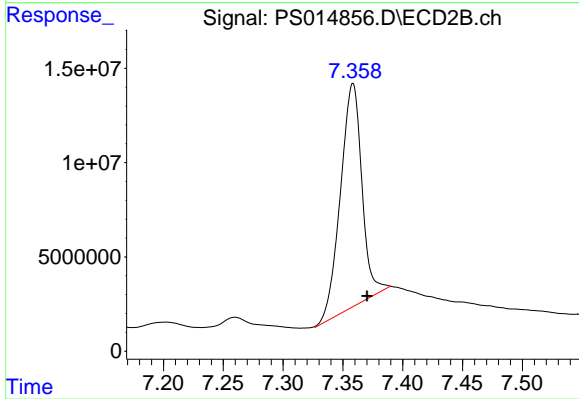
Manual Integrations
 APPROVED
 Ankita
 4/30/2021 2:29:32 PM



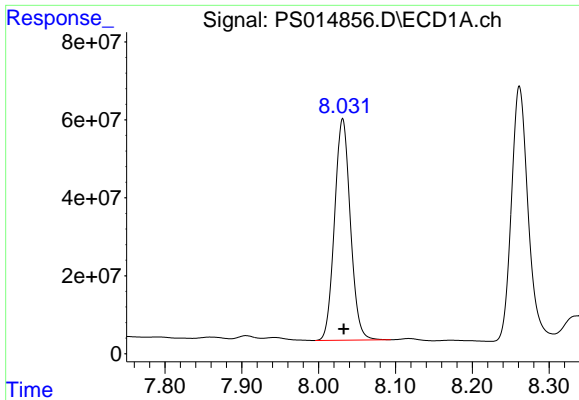
#6 MCPP
 R.T.: 7.144 min
 Delta R.T.: -0.010 min
 Response: 100531537
 Conc: 59.70 ug/ml



#7 MCPA
 R.T.: 7.657 min
 Delta R.T.: -0.013 min
 Response: 372487385
 Conc: 59.86 ug/ml



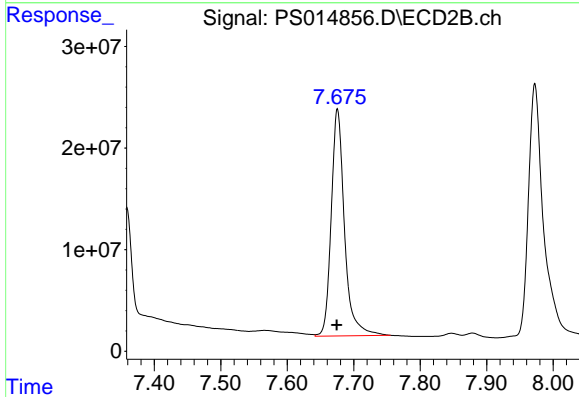
#7 MCPA
 R.T.: 7.358 min
 Delta R.T.: -0.012 min
 Response: 147851623
 Conc: 60.88 ug/ml m



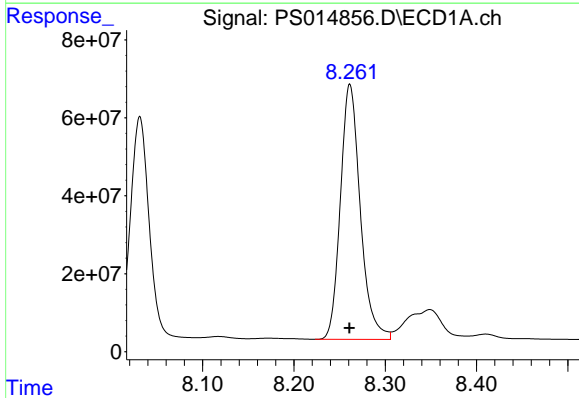
#8 DICHLORPROP
 R.T.: 8.031 min
 Delta R.T.: -0.001 min
 Response: 807160091
 Conc: 576.82 ng/ml

Instrument :
 ECD_S
 ClientSampleId :
 WALL-D-4075-AMS

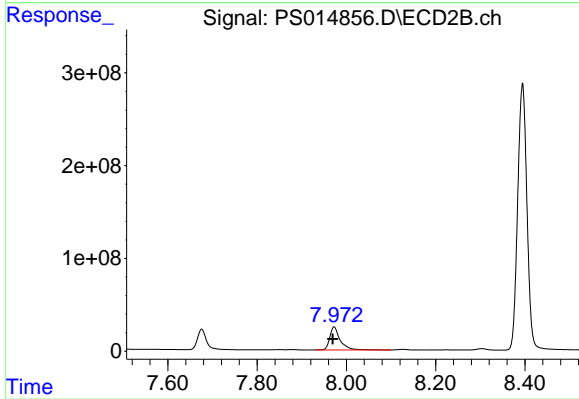
Manual Integrations
 APPROVED
 Ankita
 4/30/2021 2:29:32 PM



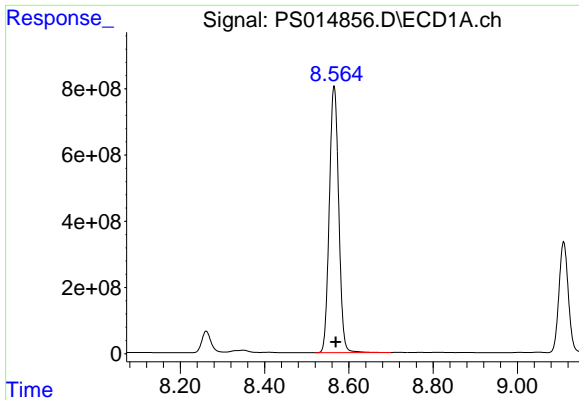
#8 DICHLORPROP
 R.T.: 7.676 min
 Delta R.T.: 0.000 min
 Response: 309963836
 Conc: 614.01 ng/ml



#9 2,4-D
 R.T.: 8.261 min
 Delta R.T.: 0.000 min
 Response: 993659475
 Conc: 624.95 ng/ml



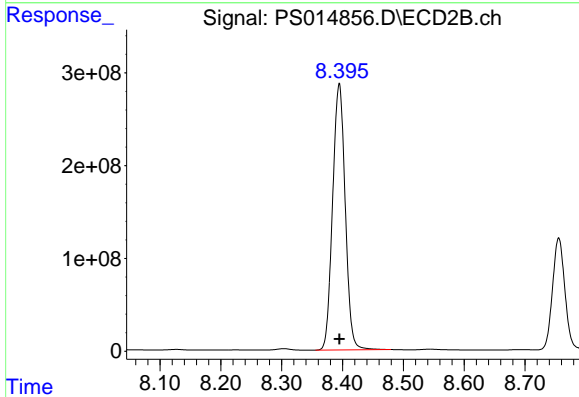
#9 2,4-D
 R.T.: 7.973 min
 Delta R.T.: 0.003 min
 Response: 395386476
 Conc: 711.01 ng/ml



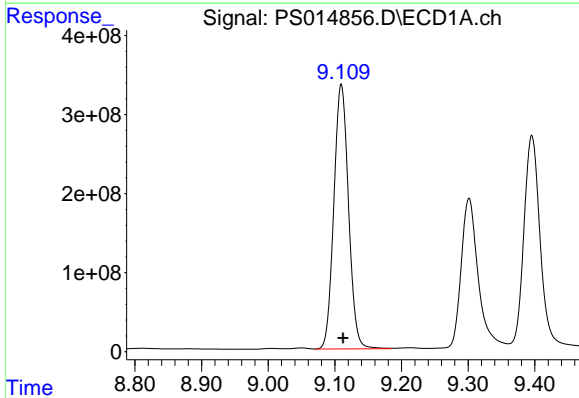
#10 Pentachlorophenol
 R.T.: 8.565 min
 Delta R.T.: -0.004 min
 Response: 12466291108
 Conc: 593.16 ng/ml

Instrument :
 ECD_S
 ClientSampleId :
 WALL-D-4075-AMS

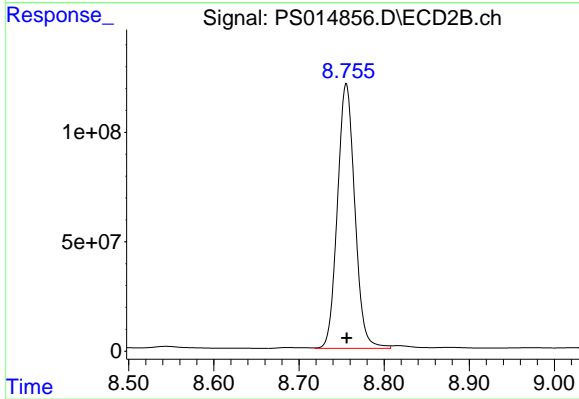
Manual Integrations
 APPROVED
 Ankita
 4/30/2021 2:29:32 PM



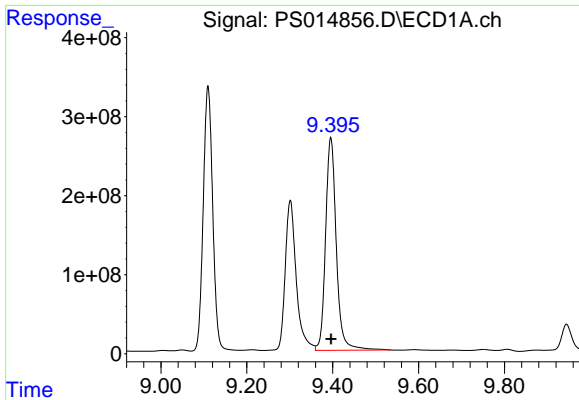
#10 Pentachlorophenol
 R.T.: 8.395 min
 Delta R.T.: 0.000 min
 Response: 4132618392
 Conc: 614.74 ng/ml



#11 2,4,5-TP (SILVEX)
 R.T.: 9.110 min
 Delta R.T.: -0.002 min
 Response: 5123799169
 Conc: 625.89 ng/ml



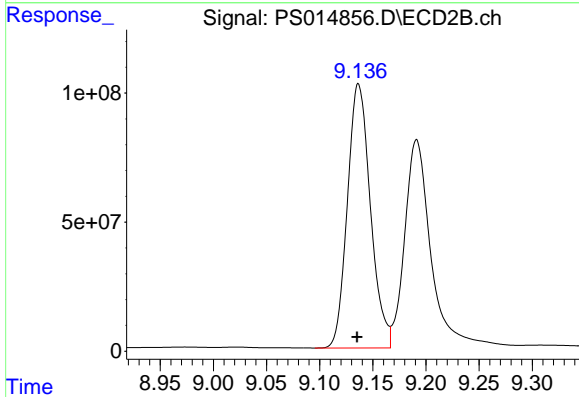
#11 2,4,5-TP (SILVEX)
 R.T.: 8.756 min
 Delta R.T.: 0.000 min
 Response: 1715692354
 Conc: 628.07 ng/ml



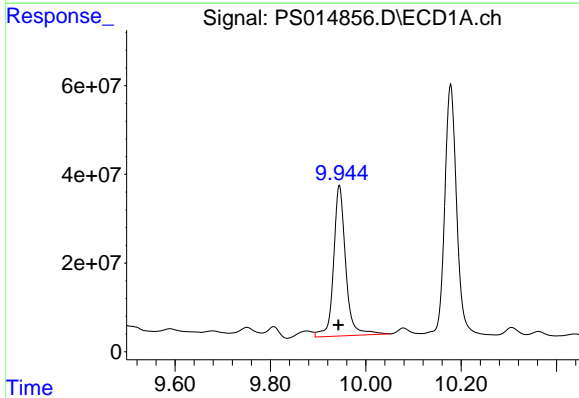
#12 2,4,5-T
 R.T.: 9.396 min
 Delta R.T.: 0.000 min
 Response: 4674474482
 Conc: 568.25 ng/ml

Instrument :
 ECD_S
ClientSampled :
 WALL-D-4075-AMS

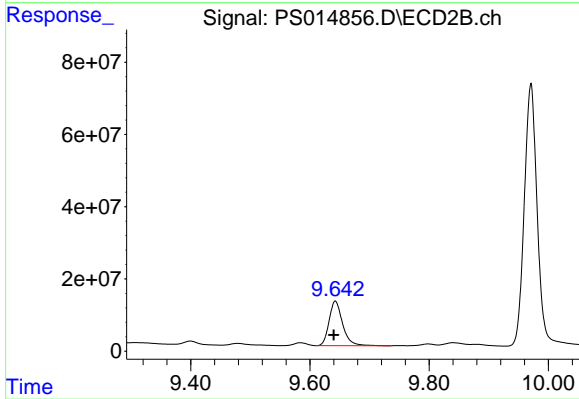
Manual Integrations
APPROVED
 Ankita
 4/30/2021 2:29:32 PM



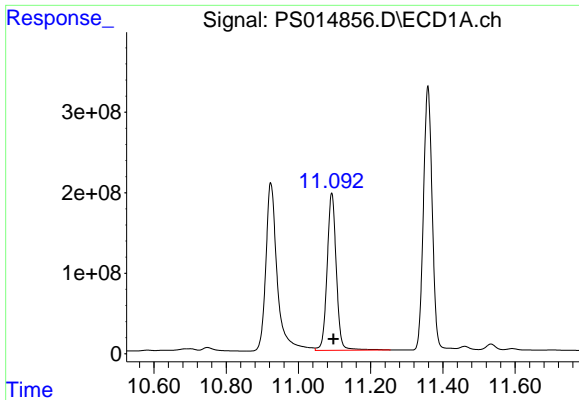
#12 2,4,5-T
 R.T.: 9.136 min
 Delta R.T.: 0.001 min
 Response: 1544846472
 Conc: 590.64 ng/ml



#13 2,4-DB
 R.T.: 9.945 min
 Delta R.T.: 0.002 min
 Response: 599108913
 Conc: 393.70 ng/ml



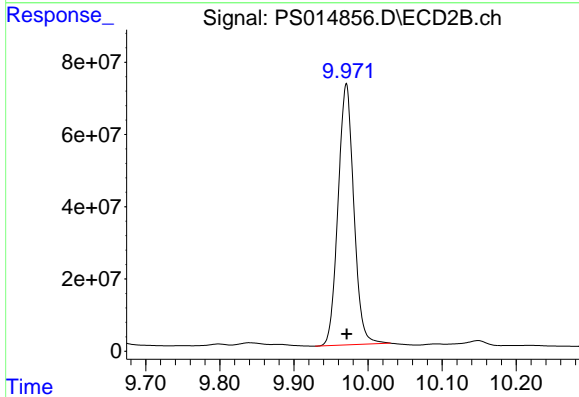
#13 2,4-DB
 R.T.: 9.643 min
 Delta R.T.: 0.003 min
 Response: 194781778
 Conc: 561.54 ng/ml



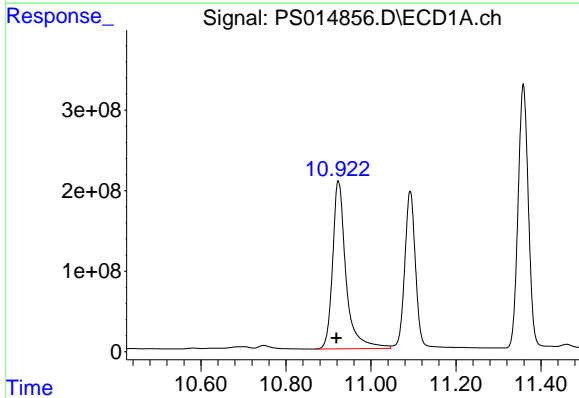
#14 DINOSEB
 R.T.: 11.092 min
 Delta R.T.: -0.004 min
 Response: 3459507871
 Conc: 536.89 ng/ml

Instrument :
 ECD_S
ClientSampled :
 WALL-D-4075-AMS

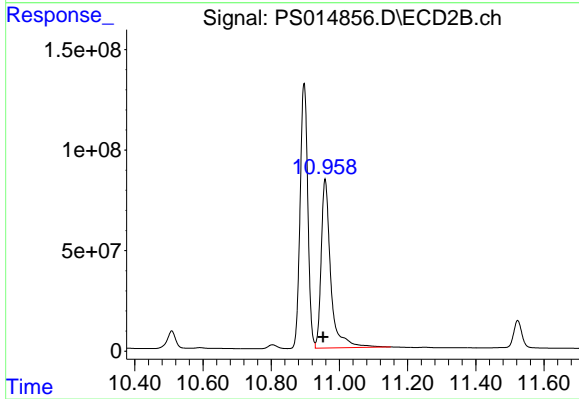
Manual Integrations
APPROVED
 Ankita
 4/30/2021 2:29:32 PM



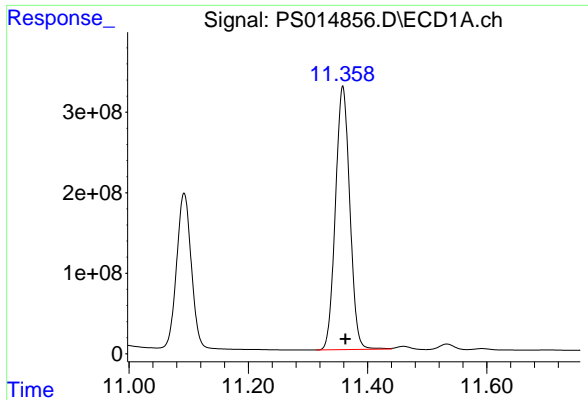
#14 DINOSEB
 R.T.: 9.971 min
 Delta R.T.: 0.000 min
 Response: 1065776913
 Conc: 553.46 ng/ml



#15 Picloram
 R.T.: 10.924 min
 Delta R.T.: 0.005 min
 Response: 4571748361
 Conc: 408.62 ng/ml



#15 Picloram
 R.T.: 10.958 min
 Delta R.T.: 0.006 min
 Response: 1638406942
 Conc: 436.92 ng/ml



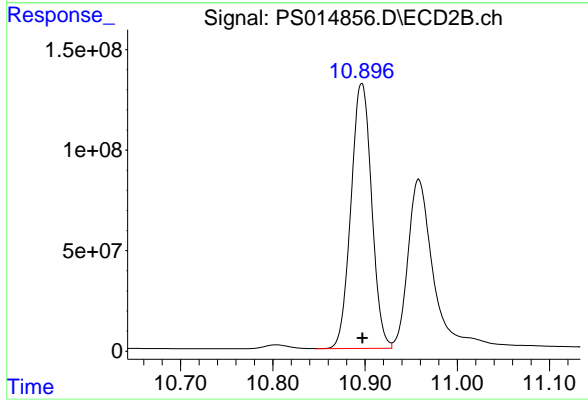
#16 DCPA

R.T.: 11.358 min
Delta R.T.: -0.004 min
Response: 5474260754
Conc: 444.27 ng/ml

Instrument :
ECD_S
ClientSampled :
WALL-D-4075-AMS

Manual Integrations
APPROVED

Ankita
4/30/2021 2:29:32 PM



#16 DCPA

R.T.: 10.896 min
Delta R.T.: 0.000 min
Response: 2051959212
Conc: 505.32 ng/ml