

Data Path : Z:\pestpcbsrv\HPCHEM1\ECD_S\Data\PS042924\
 Data File : PS026576.D
 Signal(s) : Signal #1: ECD1A.ch Signal #2: ECD2B.ch
 Acq On : 29 Apr 2024 22:36
 Operator : AR\AJ
 Sample : PB160572BL (Sig #1); PB160572BS (Sig #2)
 Misc :
 ALS Vial : 15 Sample Multiplier: 1

Instrument :
 ECD_S
ClientSampleId :
 PB160572BL

Manual Integrations
APPROVED
 Reviewed By :Abdul Mirza 04/30/2024
 Supervised By :mohammad ahmed 05/02/2024

Integration File signal 1: autoint1.e
 Integration File signal 2: autoint2.e
 Quant Time: Apr 30 04:31:18 2024
 Quant Method : Z:\pestpcbsrv\HPCHEM1\ECD_S\Method\PS042924.M
 Quant Title : 8080.M
 QLast Update : Mon Apr 29 15:59:36 2024
 Response via : Initial Calibration
 Integrator: ChemStation

Volume Inj. : 2 µl
 Signal #1 Phase : Rtx-CLPesticides Signal #2 Phase: Rtx-CLPesticides2
 Signal #1 Info : 30M x 0.32mm x0.5 Signal #2 Info : 30M x 0.32mm x 0.25µm

| Compound | RT#1 | RT#2 | Resp#1 | Resp#2 | ng/ml | ng/ml |
|-----------------------------|-------|-------|----------|---------|----------|----------|
| ----- | | | | | | |
| System Monitoring Compounds | | | | | | |
| 4) S 2,4-DCAA | 7.295 | 7.795 | 1678.9E6 | 876.9E6 | 678.584m | 520.789m |

Target Compounds

(f)=RT Delta > 1/2 Window (#)=Amounts differ by > 25% (m)=manual int.

Data Path : Z:\pestpcbsrv\HPCHEM1\ECD_S\Data\PS042924\
 Data File : PS026576.D
 Signal(s) : Signal #1: ECD1A.ch Signal #2: ECD2B.ch
 Acq On : 29 Apr 2024 22:36
 Operator : AR\AJ
 Sample : PB160572BL (Sig #1); PB160572BS (Sig #2)
 Misc :
 ALS Vial : 15 Sample Multiplier: 1

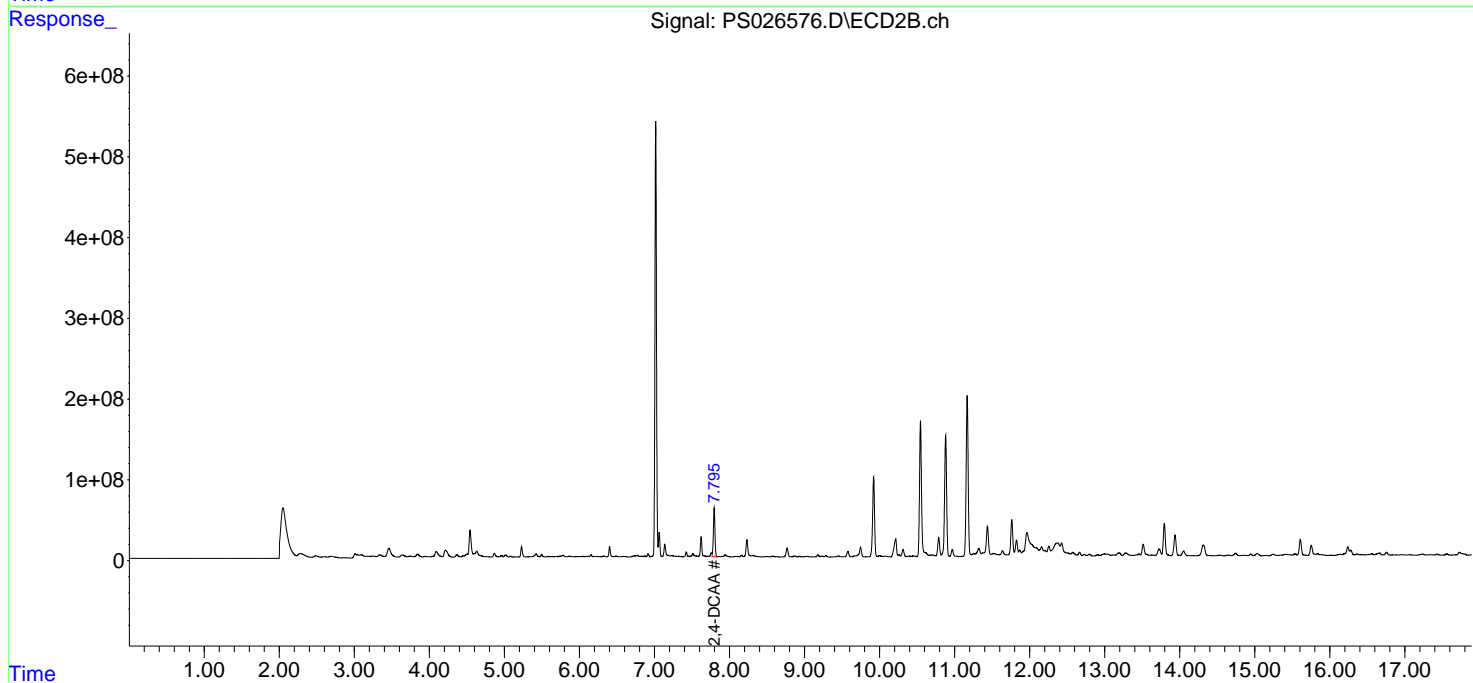
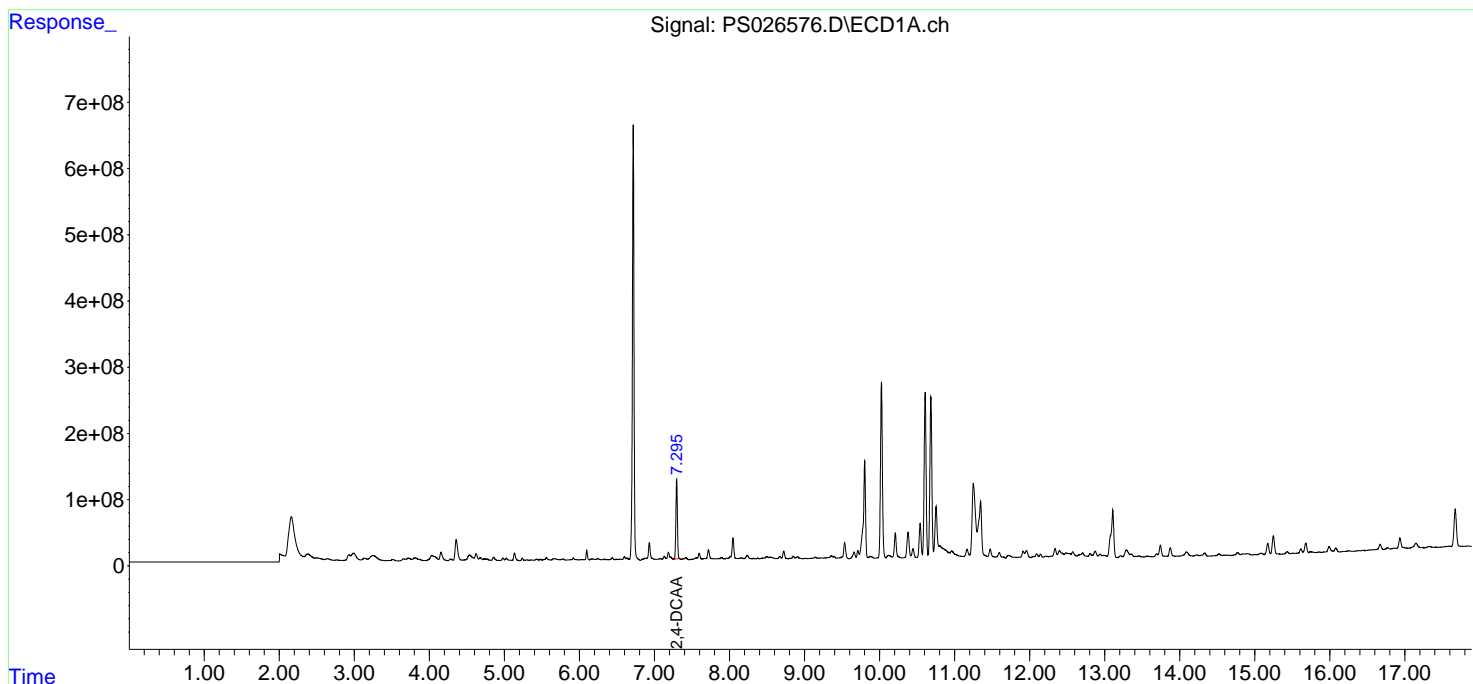
Instrument :
 ECD_S
ClientSampleId :
 PB160572BL

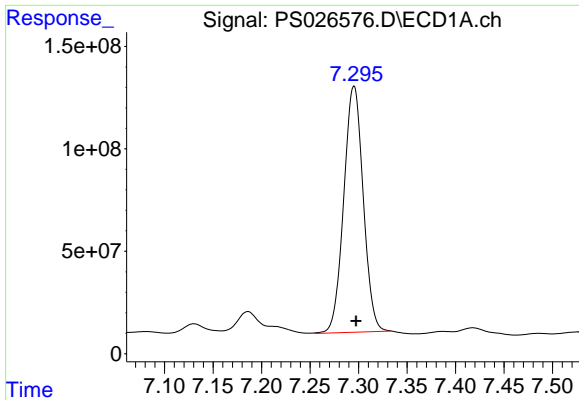
Manual Integrations
APPROVED

Reviewed By :Abdul Mirza 04/30/2024
 Supervised By :mohammad ahmed 05/02/2024

Integration File signal 1: autoint1.e
 Integration File signal 2: autoint2.e
 Quant Time: Apr 30 04:31:18 2024
 Quant Method : Z:\pestpcbsrv\HPCHEM1\ECD_S\Method\PS042924.M
 Quant Title : 8080.M
 QLast Update : Mon Apr 29 15:59:36 2024
 Response via : Initial Calibration
 Integrator: ChemStation

Volume Inj. : 2 µl
 Signal #1 Phase : Rtx-CLPesticides Signal #2 Phase: Rtx-CLPesticides2
 Signal #1 Info : 30M x 0.32mm x0.5 Signal #2 Info : 30M x 0.32mm x 0.25µm





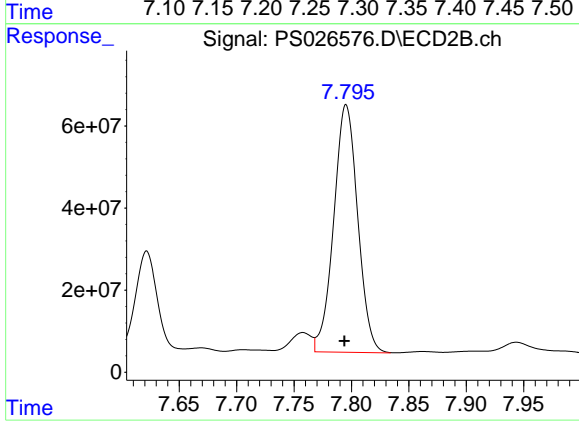
#4 2,4-DCAA

R.T.: 7.295 min
Delta R.T.: -0.002 min
Response: 1678871425
Conc: 678.58 ng/ml

Instrument :
ECD_S
ClientSampleId :
PB160572BL

Manual Integrations
APPROVED

Reviewed By :Abdul Mirza 04/30/2024
Supervised By :mohammad ahmed 05/02/2024



#4 2,4-DCAA

R.T.: 7.795 min
Delta R.T.: 0.000 min
Response: 876913006
Conc: 520.79 ng/ml m