

Data Path : Z:\pestpcbsrv\HPCHEM1\ECD_S\Data\PS043019\
 Data File : PS004351.D
 Signal(s) : Signal #1: ECD1A.ch Signal #2: ECD2B.ch
 Acq On : 30 Apr 2019 07:42
 Operator : EI\SJ
 Sample : HEXANE
 Misc :
 ALS Vial : 1 Sample Multiplier: 1

Instrument :
 ECD_S
 ClientSampleId :
 HEXANE

Integration File signal 1: autoint1.e
 Integration File signal 2: autoint2.e
 Quant Time: May 01 03:08:45 2019
 Quant Method : Z:\pestpcbsrv\HPCHEM1\ECD_S\Method\PS042919.M
 Quant Title : 8080.M
 QLast Update : Tue Apr 30 08:27:54 2019
 Response via : Initial Calibration
 Integrator: ChemStation

Volume Inj. : 2 µl
 Signal #1 Phase : Rtx-CLPesticides Signal #2 Phase: Rtx-CLPesticides2
 Signal #1 Info : 30M x 0.32mm x0.5 Signal #2 Info : 30M x 0.32mm x 0.25µm

Compound	RT#1	RT#2	Resp#1	Resp#2	ng/ml	ng/ml
----------	------	------	--------	--------	-------	-------

System Monitoring Compounds

Target Compounds

7) T	MCPA	6.457	0.000	13114098	0	5.090	N.D.	#
9) T	2,4-D	7.000	0.000	2686641	0	4.722	N.D.	#

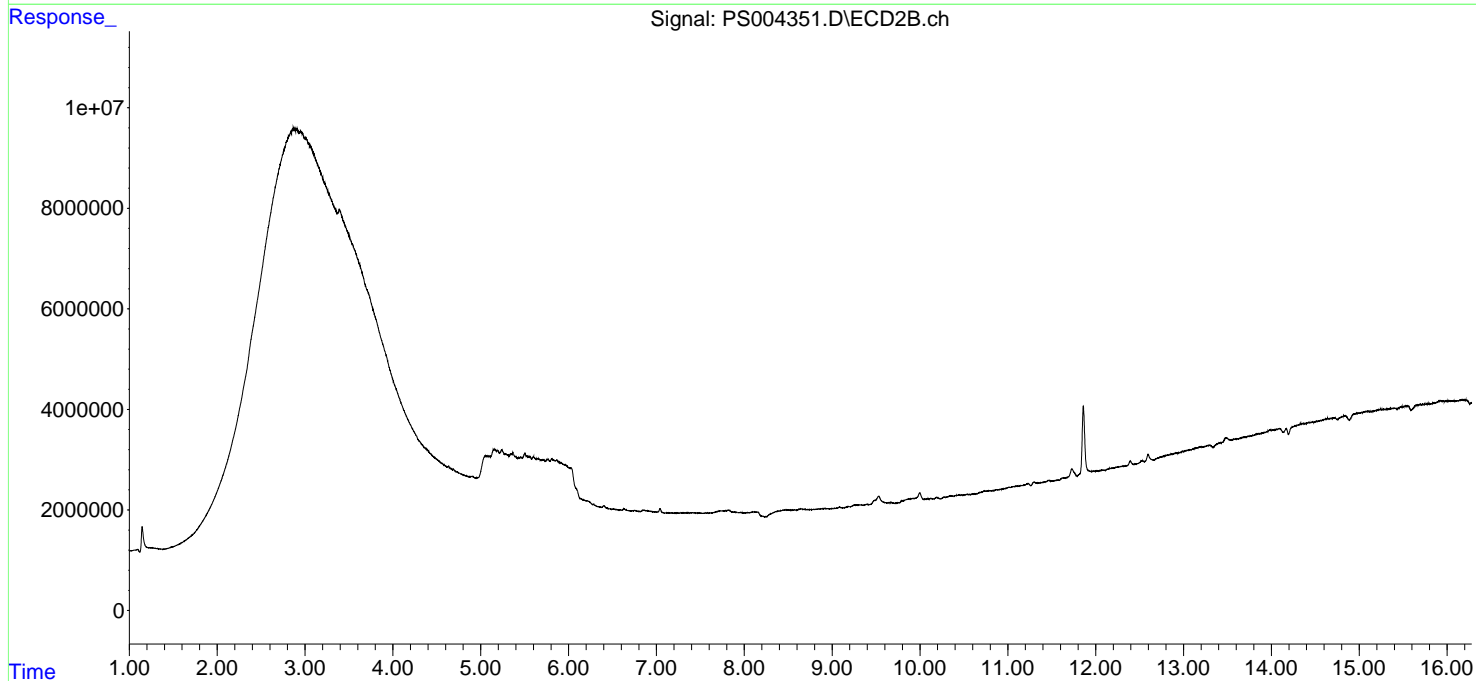
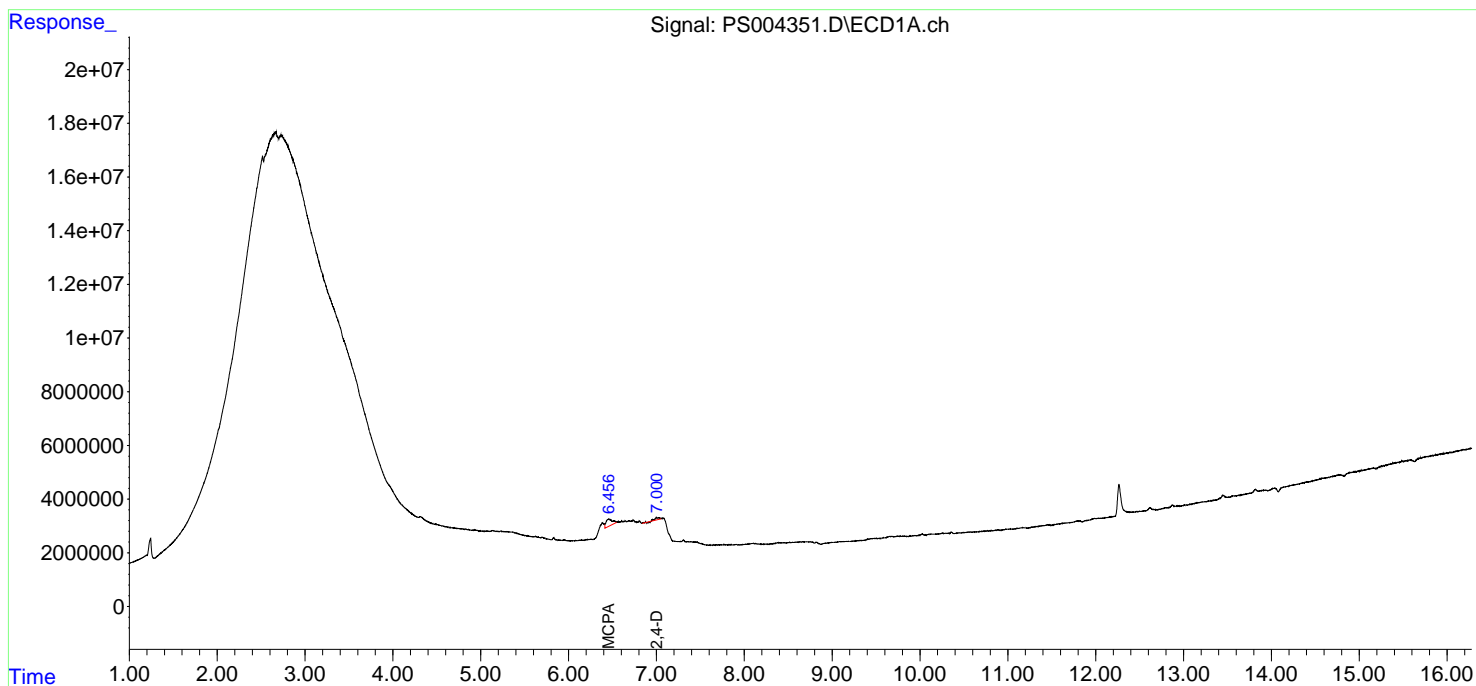
(f)=RT Delta > 1/2 Window (#)=Amounts differ by > 25% (m)=manual int.

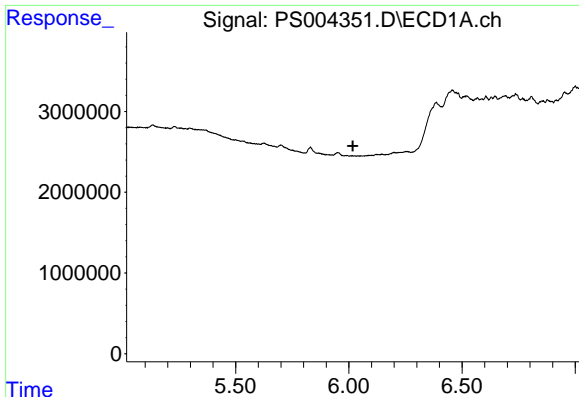
Data Path : Z:\pestpcbsrv\HPCHEM1\ECD_S\Data\PS043019\
 Data File : PS004351.D
 Signal(s) : Signal #1: ECD1A.ch Signal #2: ECD2B.ch
 Acq On : 30 Apr 2019 07:42
 Operator : EI\SJ
 Sample : HEXANE
 Misc :
 ALS Vial : 1 Sample Multiplier: 1

Instrument :
 ECD_S
 ClientSampled :
 HEXANE

Integration File signal 1: autoint1.e
 Integration File signal 2: autoint2.e
 Quant Time: May 01 03:08:45 2019
 Quant Method : Z:\pestpcbsrv\HPCHEM1\ECD_S\Method\PS042919.M
 Quant Title : 8080.M
 QLast Update : Tue Apr 30 08:27:54 2019
 Response via : Initial Calibration
 Integrator: ChemStation

Volume Inj. : 2 µl
 Signal #1 Phase : Rtx-CLPesticides Signal #2 Phase: Rtx-CLPesticides2
 Signal #1 Info : 30M x 0.32mm x 0.5 Signal #2 Info : 30M x 0.32mm x 0.25µm

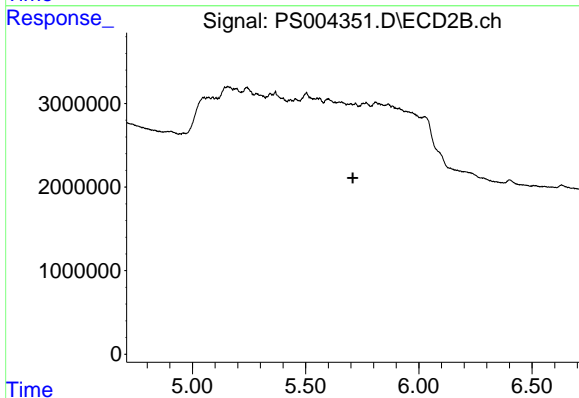




#4 2,4-DCAA

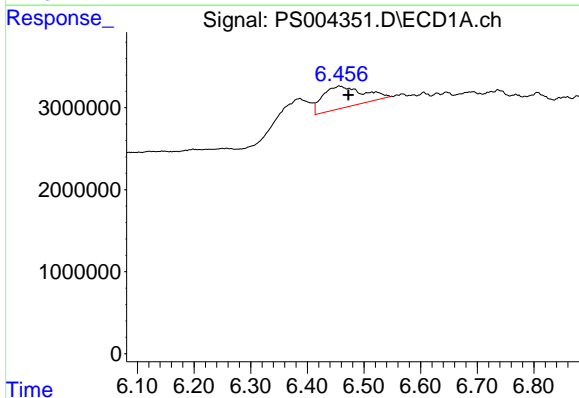
R.T.: 0.000 min
 Exp R.T. : 6.018 min
 Response: 0
 Conc: N.D.

Instrument :
 ECD_S
 ClientSampled :
 HEXANE



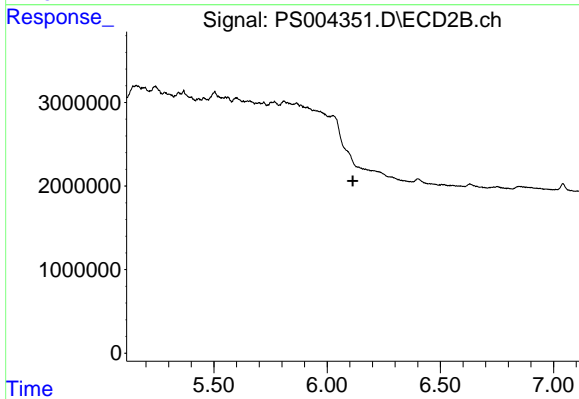
#4 2,4-DCAA

R.T.: 0.000 min
 Exp R.T. : 5.709 min
 Response: 0
 Conc: N.D.



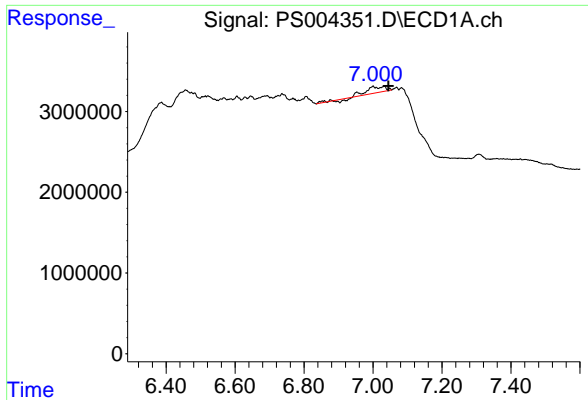
#7 MCPA

R.T.: 6.457 min
 Delta R.T.: -0.015 min
 Response: 13114098
 Conc: 5.09 ug/ml



#7 MCPA

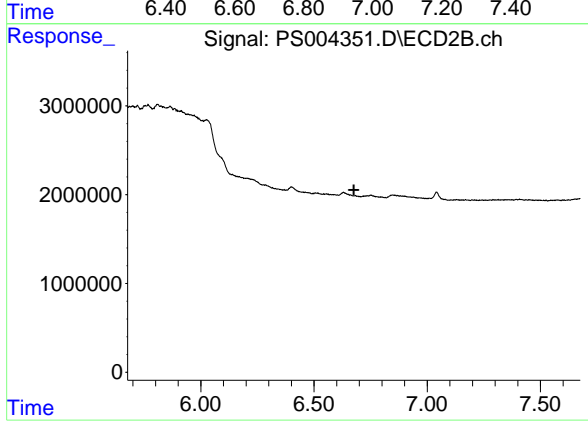
R.T.: 0.000 min
 Exp R.T. : 6.114 min
 Response: 0
 Conc: N.D.



#9 2,4-D

R.T.: 7.000 min
Delta R.T.: -0.045 min
Response: 2686641
Conc: 4.72 ng/ml

Instrument :
ECD_S
ClientSampleId :
HEXANE



#9 2,4-D

R.T.: 0.000 min
Exp R.T. : 6.676 min
Response: 0
Conc: N.D.