

Data Path : Z:\pestpcbsrv\HPCHEM1\ECD_S\Data\PS043024\
 Data File : PS026583.D
 Signal(s) : Signal #1: ECD1A.ch Signal #2: ECD2B.ch
 Acq On : 30 Apr 2024 08:49
 Operator : AR\AJ
 Sample : I.BLK
 Misc :
 ALS Vial : 2 Sample Multiplier: 1

Instrument :
 ECD_S
 ClientSampleId :
 I.BLK

Integration File signal 1: autoint1.e
 Integration File signal 2: autoint2.e
 Quant Time: May 01 03:55:54 2024
 Quant Method : Z:\pestpcbsrv\HPCHEM1\ECD_S\Method\PS042924.M
 Quant Title : 8080.M
 QLast Update : Mon Apr 29 15:59:36 2024
 Response via : Initial Calibration
 Integrator: ChemStation

Volume Inj. : 2 µl
 Signal #1 Phase : Rtx-CLPesticides Signal #2 Phase: Rtx-CLPesticides2
 Signal #1 Info : 30M x 0.32mm x0.5 Signal #2 Info : 30M x 0.32mm x 0.25µm

Compound	RT#1	RT#2	Resp#1	Resp#2	ng/ml	ng/ml

System Monitoring Compounds						
4) S 2,4-DCAA	7.293	7.795	1327.2E6	924.0E6	536.462	548.742

Target Compounds

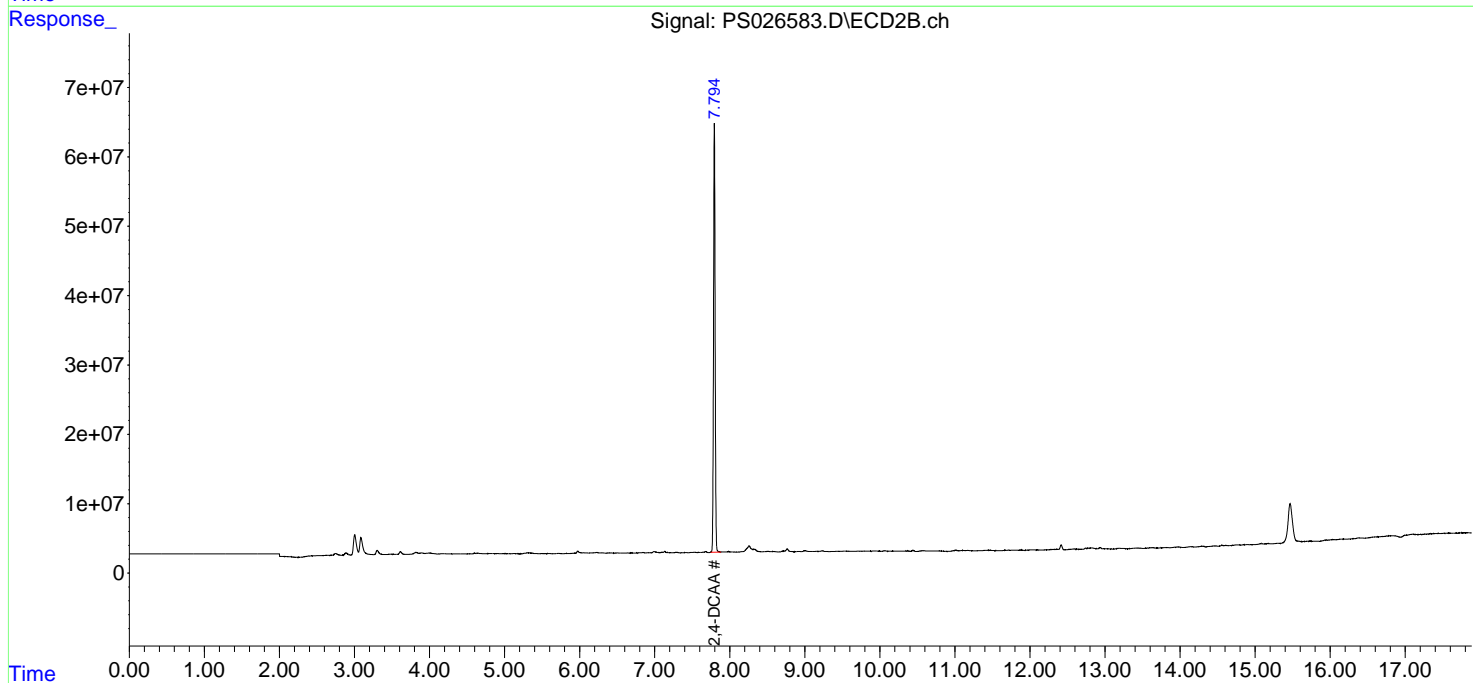
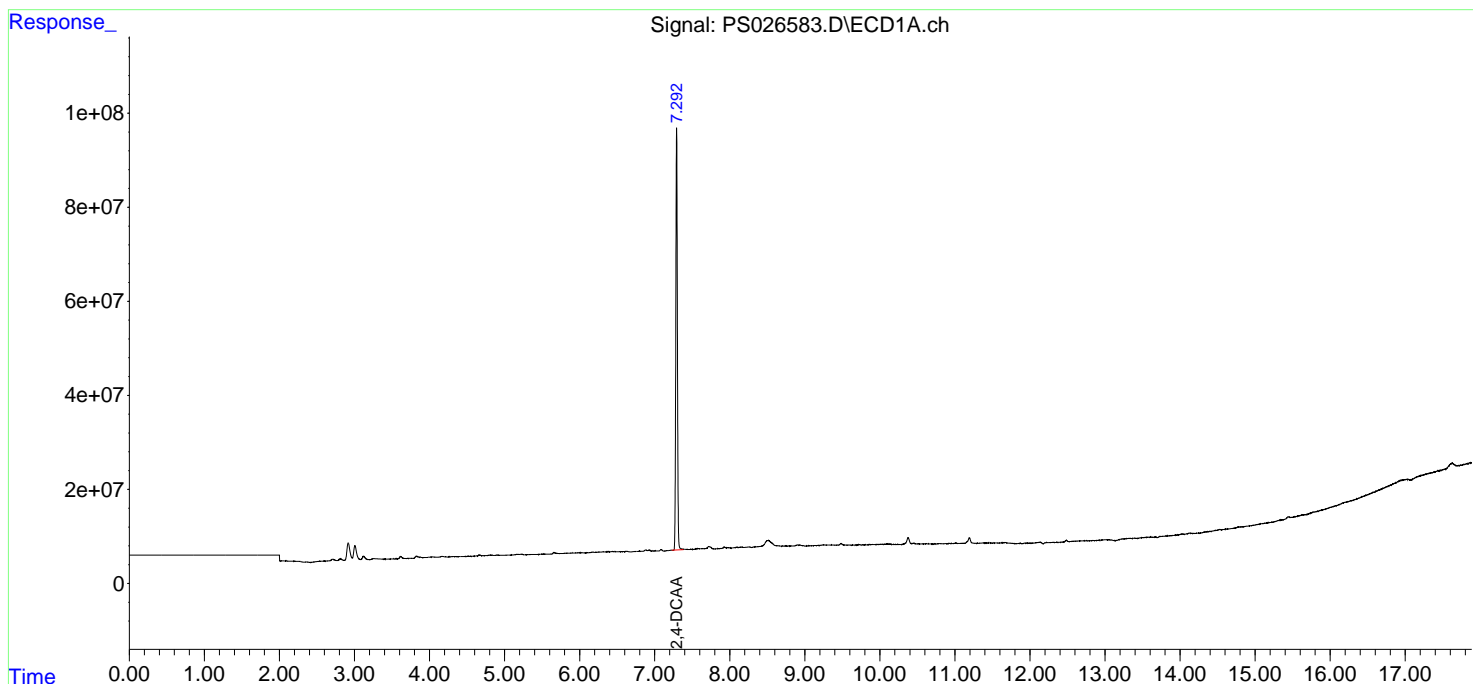
(f)=RT Delta > 1/2 Window (#)=Amounts differ by > 25% (m)=manual int.

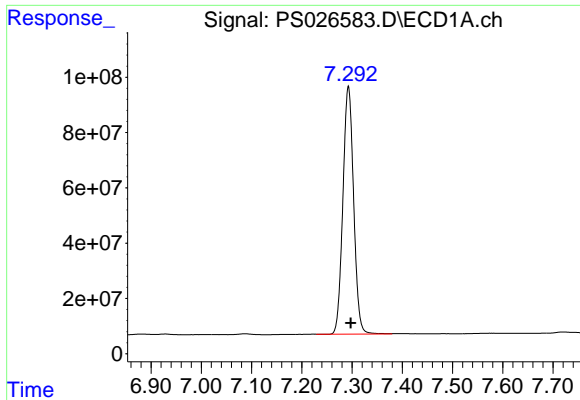
Data Path : Z:\pestpcbsrv\HPCHEM1\ECD_S\Data\PS043024\
Data File : PS026583.D
Signal(s) : Signal #1: ECD1A.ch Signal #2: ECD2B.ch
Acq On : 30 Apr 2024 08:49
Operator : AR\AJ
Sample : I.BLK
Misc :
ALS Vial : 2 Sample Multiplier: 1

Instrument :
ECD_S
ClientSampleId :
I.BLK

Integration File signal 1: autoint1.e
Integration File signal 2: autoint2.e
Quant Time: May 01 03:55:54 2024
Quant Method : Z:\pestpcbsrv\HPCHEM1\ECD_S\Method\PS042924.M
Quant Title : 8080.M
QLast Update : Mon Apr 29 15:59:36 2024
Response via : Initial Calibration
Integrator: ChemStation

Volume Inj. : 2 µl
Signal #1 Phase : Rtx-CLPesticides Signal #2 Phase: Rtx-CLPesticides2
Signal #1 Info : 30M x 0.32mm x 0.5 Signal #2 Info : 30M x 0.32mm x 0.25µm

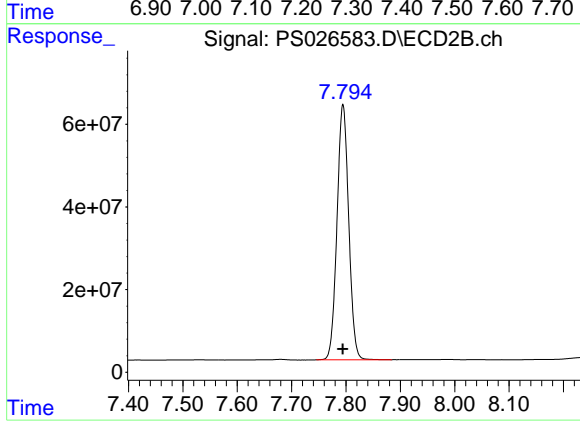




#4 2,4-DCAA

R.T.: 7.293 min
Delta R.T.: -0.005 min
Response: 1327248931
Conc: 536.46 ng/ml

Instrument :
ECD_S
ClientSampleId :
I.BLK



#4 2,4-DCAA

R.T.: 7.795 min
Delta R.T.: 0.000 min
Response: 923981231
Conc: 548.74 ng/ml