

Data Path : Z:\pestpcbsrv\HPCHEM1\ECD_S\Data\PS050119\
 Data File : PS004374.D
 Signal(s) : Signal #1: ECD1A.ch Signal #2: ECD2B.ch
 Acq On : 01 May 2019 13:43
 Operator : EI\SJ
 Sample : MDL-BL-WATER-06
 Misc :
 ALS Vial : 11 Sample Multiplier: 1

Instrument :
 ECD_S
 ClientSampleId :

Integration File signal 1: autoint1.e
 Integration File signal 2: autoint2.e
 Quant Time: May 02 02:05:57 2019
 Quant Method : Z:\pestpcbsrv\HPCHEM1\ECD_S\Method\PS042919.M
 Quant Title : 8080.M
 QLast Update : Tue Apr 30 08:27:54 2019
 Response via : Initial Calibration
 Integrator: ChemStation

Volume Inj. : 2 µl
 Signal #1 Phase : Rtx-CLPesticides Signal #2 Phase: Rtx-CLPesticides2
 Signal #1 Info : 30M x 0.32mm x0.5 Signal #2 Info : 30M x 0.32mm x 0.25µm

Compound	RT#1	RT#2	Resp#1	Resp#2	ng/ml	ng/ml

System Monitoring Compounds						
4) S 2,4-DCAA	6.031	5.725	311.0E6	244.5E6	494.102	507.025
Target Compounds						
7) T MCPA	0.000	6.059	0	38748456	N.D.	19.506

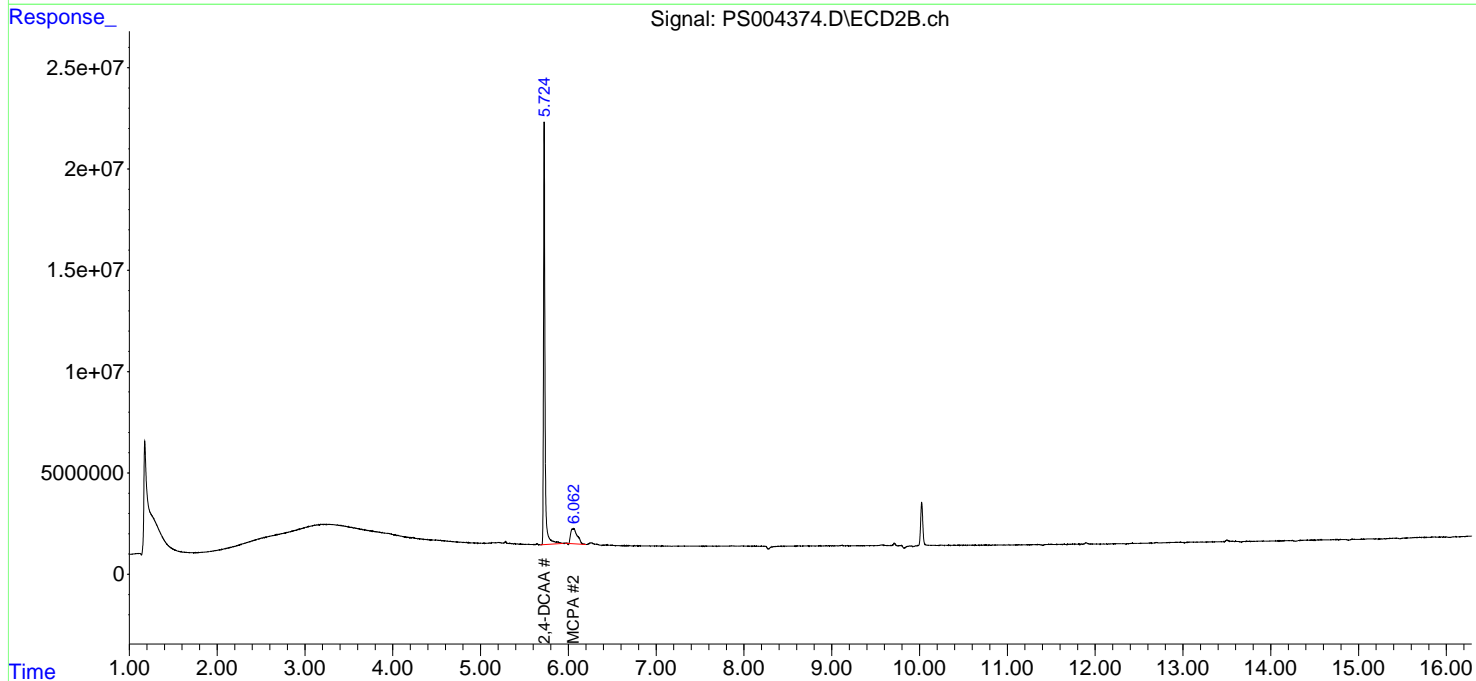
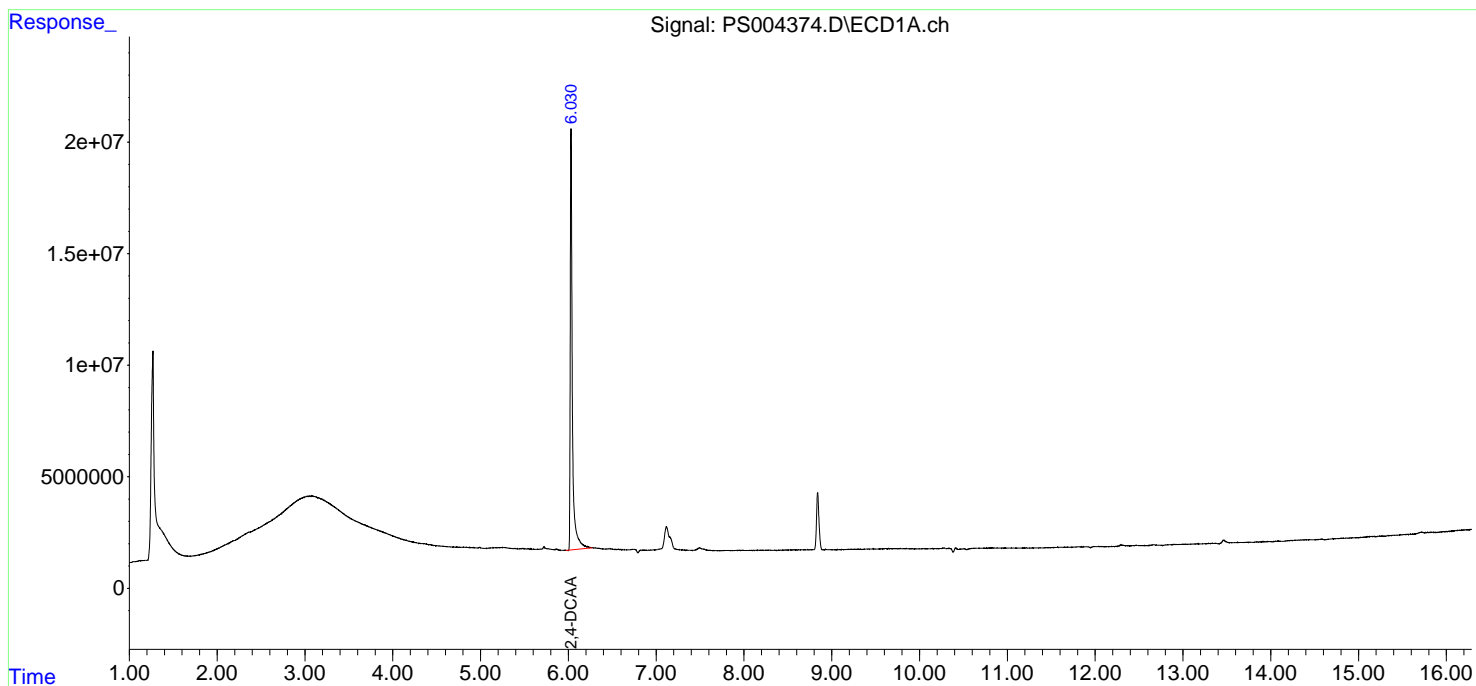
(f)=RT Delta > 1/2 Window (#)=Amounts differ by > 25% (m)=manual int.

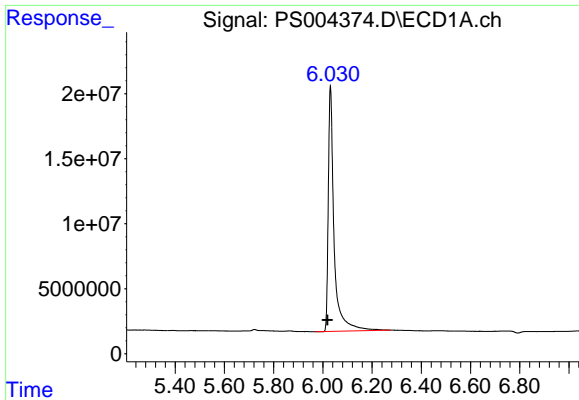
Data Path : Z:\pestpcbsrv\HPCHEM1\ECD_S\Data\PS050119\
Data File : PS004374.D
Signal(s) : Signal #1: ECD1A.ch Signal #2: ECD2B.ch
Acq On : 01 May 2019 13:43
Operator : EI\SJ
Sample : MDL-BL-WATER-06
Misc :
ALS Vial : 11 Sample Multiplier: 1

Instrument :
ECD_S
ClientSampleId :

Integration File signal 1: autoint1.e
Integration File signal 2: autoint2.e
Quant Time: May 02 02:05:57 2019
Quant Method : Z:\pestpcbsrv\HPCHEM1\ECD_S\Method\PS042919.M
Quant Title : 8080.M
QLast Update : Tue Apr 30 08:27:54 2019
Response via : Initial Calibration
Integrator: ChemStation

Volume Inj. : 2 µl
Signal #1 Phase : Rtx-CLPesticides Signal #2 Phase: Rtx-CLPesticides2
Signal #1 Info : 30M x 0.32mm x0.5 Signal #2 Info : 30M x 0.32mm x 0.25µm

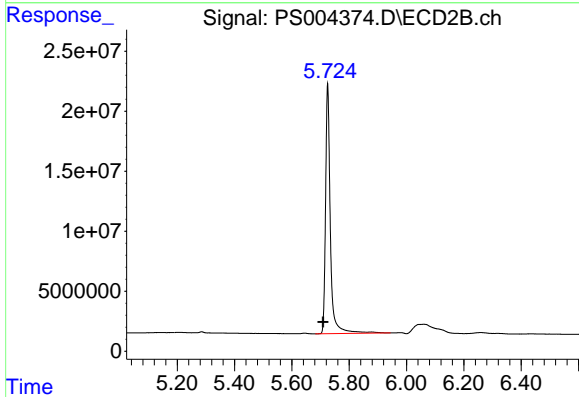




#4 2,4-DCAA

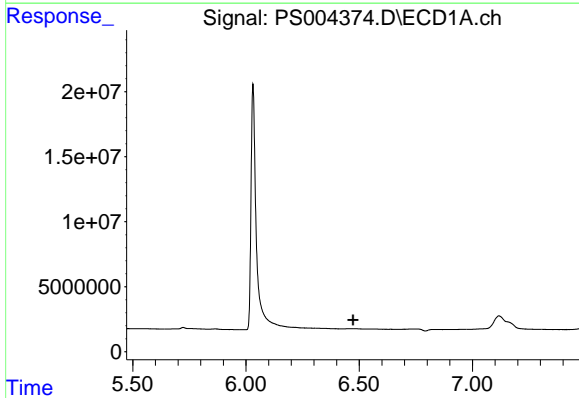
R.T.: 6.031 min
 Delta R.T.: 0.013 min
 Response: 311015654
 Conc: 494.10 ng/ml

Instrument :
 ECD_S
 ClientSampleId :



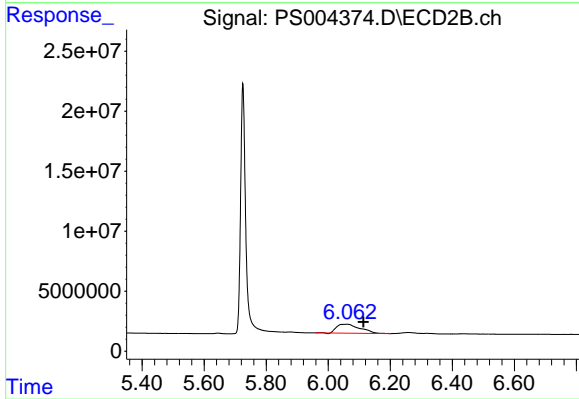
#4 2,4-DCAA

R.T.: 5.725 min
 Delta R.T.: 0.016 min
 Response: 244529546
 Conc: 507.02 ng/ml



#7 MCPA

R.T.: 0.000 min
 Exp R.T. : 6.472 min
 Response: 0
 Conc: N.D.



#7 MCPA

R.T.: 6.059 min
 Delta R.T.: -0.055 min
 Response: 38748456
 Conc: 19.51 ug/ml