

Data Path : Z:\pestpcbsrv\HPCHEM1\ECD_S\Data\PS050120\
 Data File : PS010108.D
 Signal(s) : Signal #1: ECD1A.ch Signal #2: ECD2B.ch
 Acq On : 01 May 2020 20:19
 Operator : DD\AJ
 Sample : I.BLK
 Misc :
 ALS Vial : 2 Sample Multiplier: 1

Instrument :
 ECD_S
 ClientSampleId :
 I.BLK

Integration File signal 1: autoint1.e
 Integration File signal 2: autoint2.e
 Quant Time: May 02 03:45:16 2020
 Quant Method : Z:\pestpcbsrv\HPCHEM1\ECD_S\Method\PS040820.M
 Quant Title : 8080.M
 QLast Update : Thu Apr 09 05:27:48 2020
 Response via : Initial Calibration
 Integrator: ChemStation

Volume Inj. : 2 µl
 Signal #1 Phase : Rtx-CLPesticides Signal #2 Phase: Rtx-CLPesticides2
 Signal #1 Info : 30M x 0.32mm x0.5 Signal #2 Info : 30M x 0.32mm x 0.25µm

	Compound	RT#1	RT#2	Resp#1	Resp#2	ng/ml	ng/ml

System Monitoring Compounds							
4) S	2,4-DCAA	7.235	6.922	294.6E6	280.5E6	487.923	566.328
Target Compounds							
5) T	DICAMBA	0.000	7.091	0	1336315	N.D.	<MDL
6) T	MCPP	0.000	7.155	0	1111886	N.D.	<MDL
8) T	DICHLORPROP	0.000	7.744	0	2567330	N.D.	5.101
9) T	2,4-D	8.421	0.000	4170709	0	7.264	N.D. #
10) T	Pentachlo...	0.000	8.442	0	1821759	N.D.	<MDL
11) T	2,4,5-TP ...	0.000	8.800	0	7430475	N.D.	2.841
12) T	2,4,5-T	0.000	9.186	0	3174134	N.D.	1.216
14) T	DINOSEB	0.000	10.024	0	1282210	N.D.	<MDL
15) T	Picloram	0.000	11.008	0	8665913	N.D.	2.548
16) T	DCPA	0.000	10.952	0	3767441	N.D.	1.124

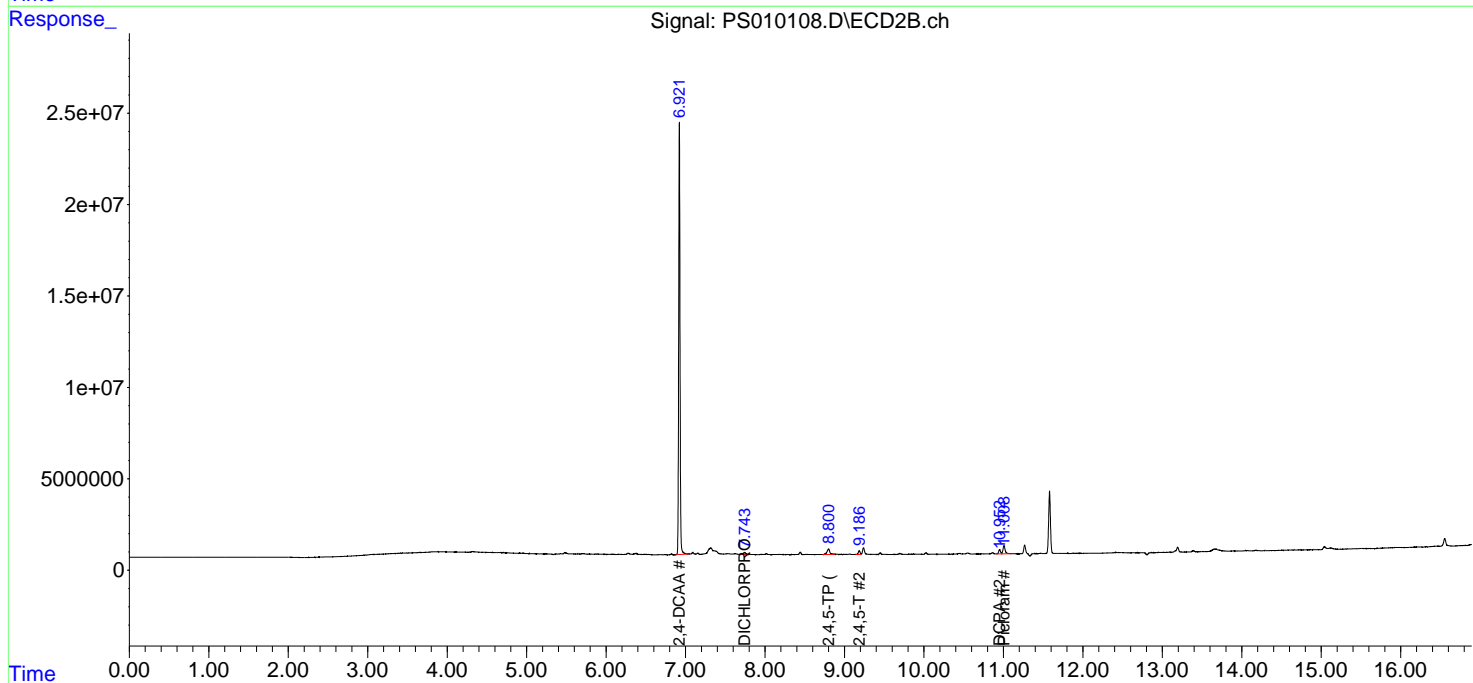
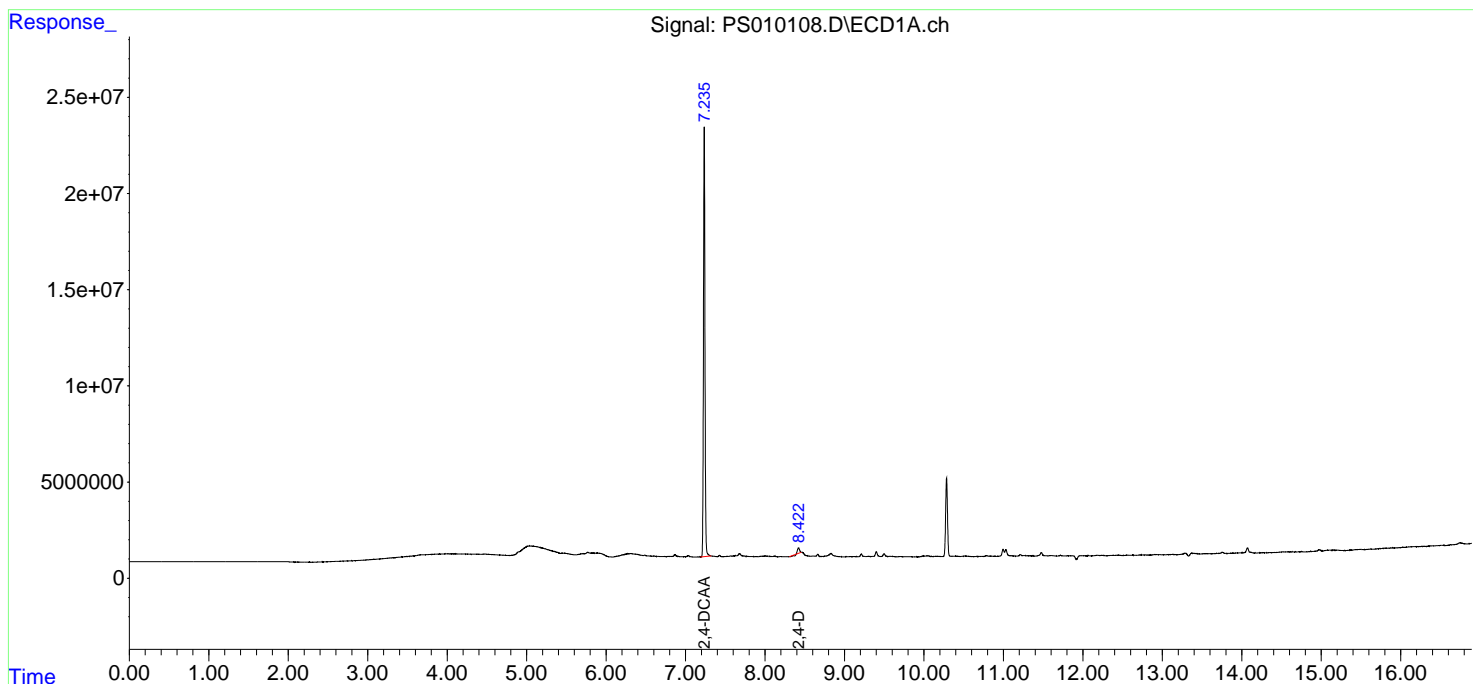
(f)=RT Delta > 1/2 Window (#)=Amounts differ by > 25% (m)=manual int.

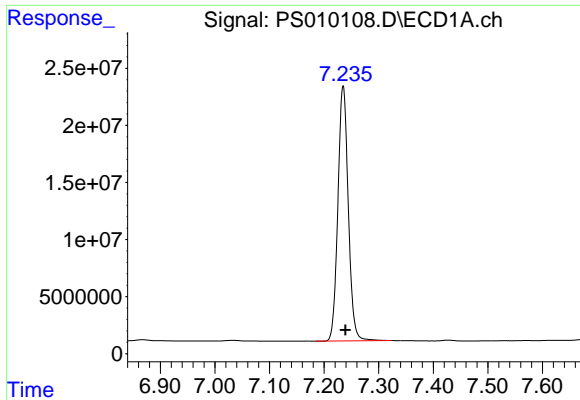
Data Path : Z:\pestpcbsrv\HPCHEM1\ECD_S\Data\PS050120\
 Data File : PS010108.D
 Signal(s) : Signal #1: ECD1A.ch Signal #2: ECD2B.ch
 Acq On : 01 May 2020 20:19
 Operator : DD\AJ
 Sample : I.BLK
 Misc :
 ALS Vial : 2 Sample Multiplier: 1

Instrument :
 ECD_S
 ClientSampleId :
 I.BLK

Integration File signal 1: autoint1.e
 Integration File signal 2: autoint2.e
 Quant Time: May 02 03:45:16 2020
 Quant Method : Z:\pestpcbsrv\HPCHEM1\ECD_S\Method\PS040820.M
 Quant Title : 8080.M
 QLast Update : Thu Apr 09 05:27:48 2020
 Response via : Initial Calibration
 Integrator: ChemStation

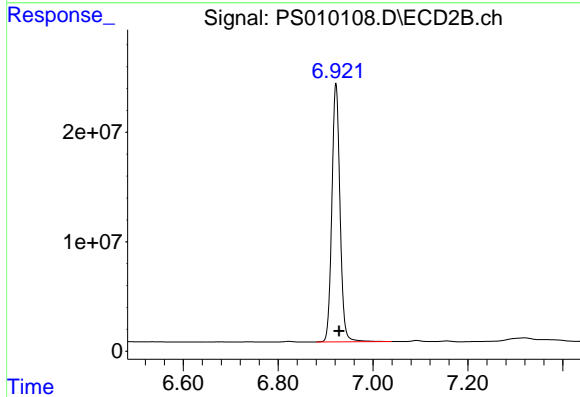
Volume Inj. : 2 µl
 Signal #1 Phase : Rtx-CLPesticides Signal #2 Phase: Rtx-CLPesticides2
 Signal #1 Info : 30M x 0.32mm x 0.5 Signal #2 Info : 30M x 0.32mm x 0.25µm



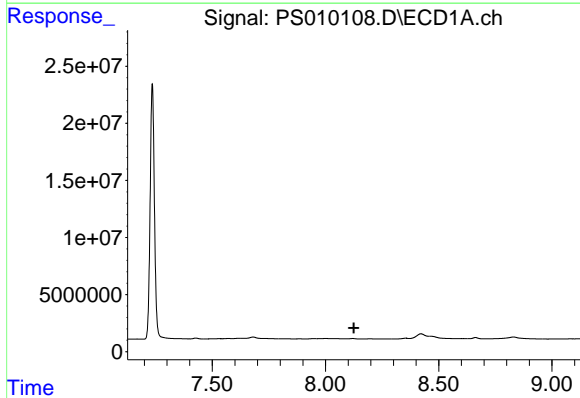


#4 2,4-DCAA
 R.T.: 7.235 min
 Delta R.T.: -0.004 min
 Response: 294615093
 Conc: 487.92 ng/ml

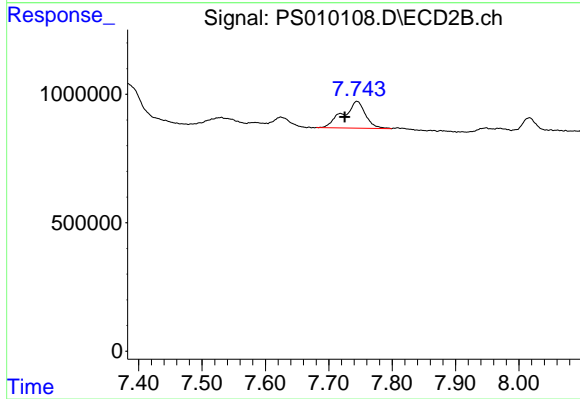
Instrument :
 ECD_S
 ClientSampleId :
 I.BLK



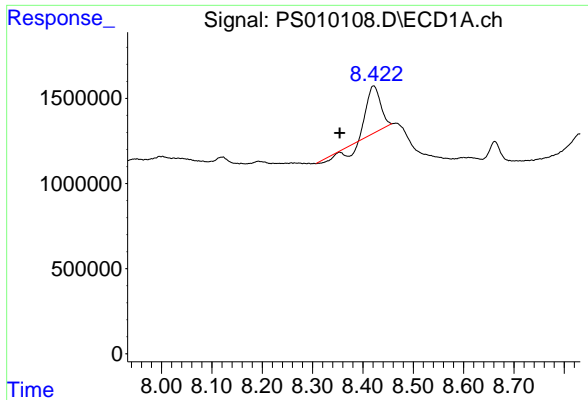
#4 2,4-DCAA
 R.T.: 6.922 min
 Delta R.T.: -0.006 min
 Response: 280474137
 Conc: 566.33 ng/ml



#8 DICHLORPROP
 R.T.: 0.000 min
 Exp R.T. : 8.125 min
 Response: 0
 Conc: N.D.



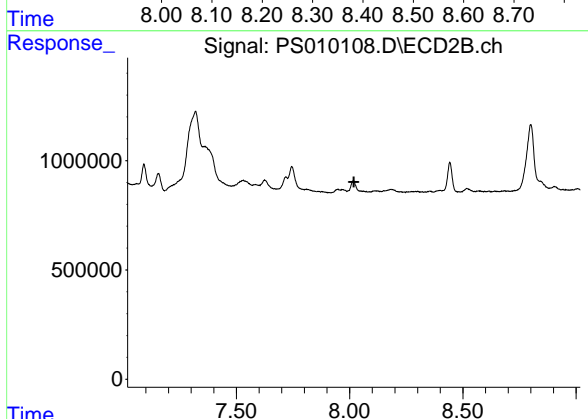
#8 DICHLORPROP
 R.T.: 7.744 min
 Delta R.T.: 0.019 min
 Response: 2567330
 Conc: 5.10 ng/ml



#9 2,4-D

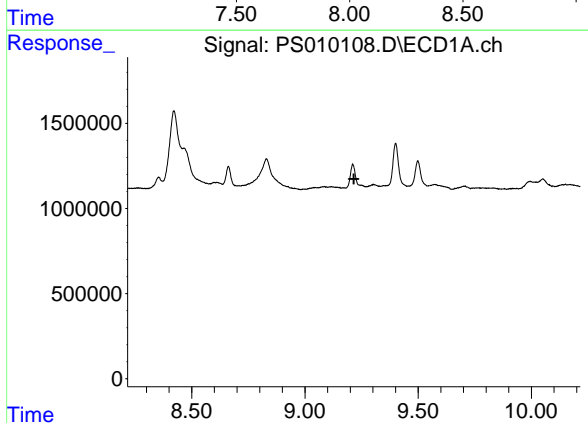
R.T.: 8.421 min
 Delta R.T.: 0.067 min
 Response: 4170709
 Conc: 7.26 ng/ml

Instrument :
 ECD_S
 ClientSampleId :
 I.BLK



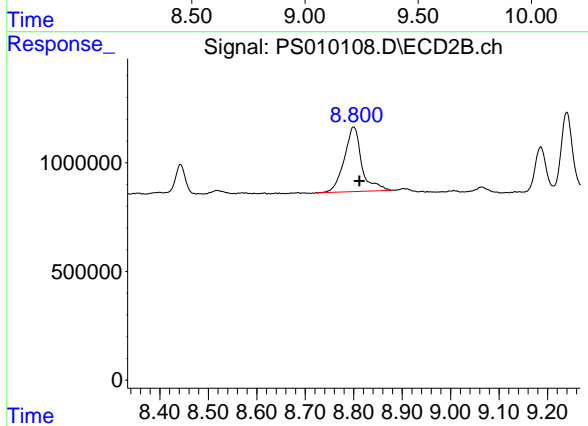
#9 2,4-D

R.T.: 0.000 min
 Exp R.T. : 8.019 min
 Response: 0
 Conc: N.D.



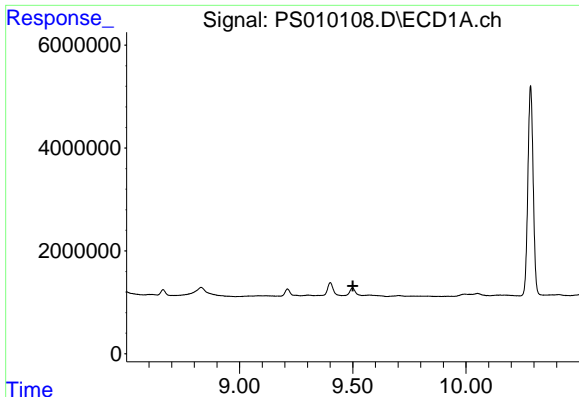
#11 2,4,5-TP (SILVEX)

R.T.: 0.000 min
 Exp R.T. : 9.216 min
 Response: 0
 Conc: N.D.



#11 2,4,5-TP (SILVEX)

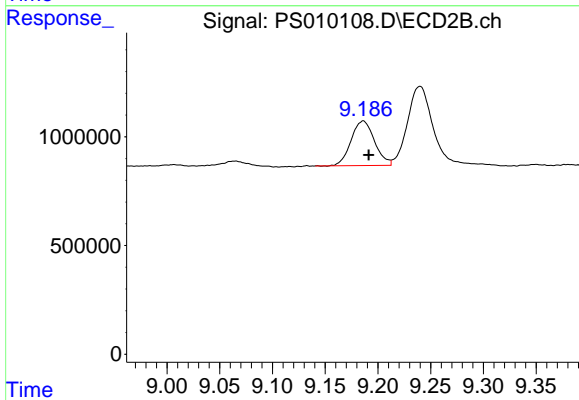
R.T.: 8.800 min
 Delta R.T.: -0.012 min
 Response: 7430475
 Conc: 2.84 ng/ml



#12 2,4,5-T

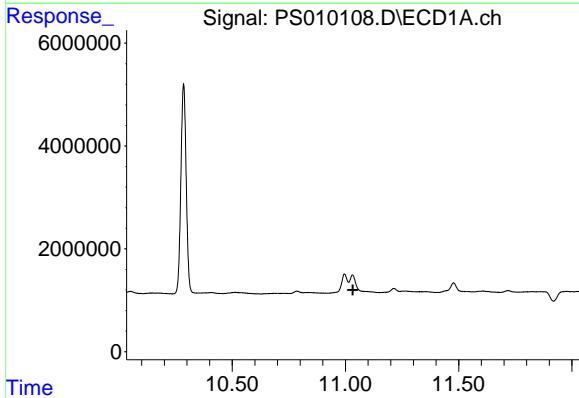
R.T.: 0.000 min
 Exp R.T. : 9.501 min
 Response: 0
 Conc: N.D.

Instrument :
 ECD_S
 ClientSampleId :
 I.BLK



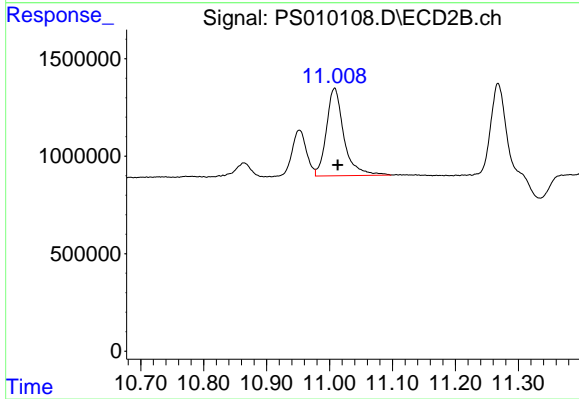
#12 2,4,5-T

R.T.: 9.186 min
 Delta R.T.: -0.005 min
 Response: 3174134
 Conc: 1.22 ng/ml



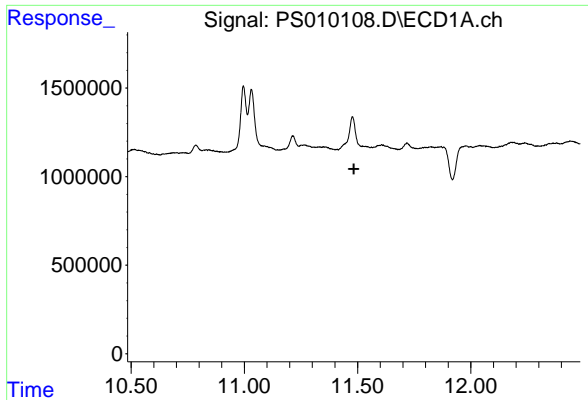
#15 Picloram

R.T.: 0.000 min
 Exp R.T. : 11.033 min
 Response: 0
 Conc: N.D.



#15 Picloram

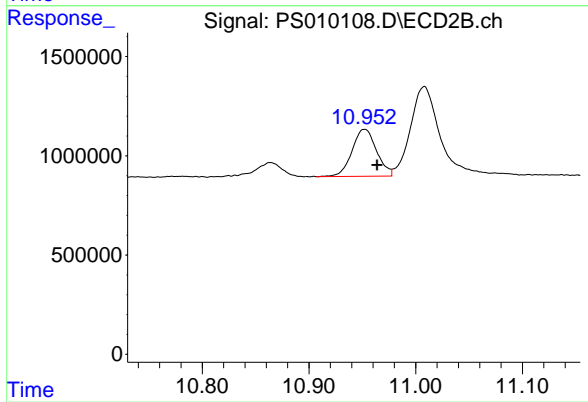
R.T.: 11.008 min
 Delta R.T.: -0.005 min
 Response: 8665913
 Conc: 2.55 ng/ml



#16 DCPA

R.T.: 0.000 min
Exp R.T.: 11.484 min
Response: 0
Conc: N.D.

Instrument :
ECD_S
ClientSampled :
I.BLK



#16 DCPA

R.T.: 10.952 min
Delta R.T.: -0.012 min
Response: 3767441
Conc: 1.12 ng/ml