

Data Path : Z:\pestpcbsrv\HPCHEM1\ECD_S\Data\PS050125\
 Data File : PS030022.D
 Signal(s) : Signal #1: ECD1A.ch Signal #2: ECD2B.ch
 Acq On : 01 May 2025 15:52
 Operator : AR\AJ
 Sample : Q1983-11
 Misc :
 ALS Vial : 9 Sample Multiplier: 1

Instrument :
 ECD_S
 ClientSampleId :
 OU4-PCS-TC-32-042325

Integration File signal 1: autoint1.e
 Integration File signal 2: autoint2.e
 Quant Time: May 02 01:29:35 2025
 Quant Method : Z:\pestpcbsrv\HPCHEM1\ECD_S\Method\PS042325.M
 Quant Title : 8080.M
 QLast Update : Wed Apr 23 12:57:40 2025
 Response via : Initial Calibration
 Integrator: ChemStation

Volume Inj. : 1 µl
 Signal #1 Phase : ZB-MR2 Signal #2 Phase: ZB-MR2
 Signal #1 Info : 30M x 0.32mm x0.5 Signal #2 Info : 30M x 0.32mm x 0.25µm

Compound	RT#1	RT#2	Resp#1	Resp#2	ng/ml	ng/ml

System Monitoring Compounds						
4) S 2,4-DCAA	6.938	7.461	804.3E6	223.7E6	326.812	317.536
Target Compounds						
1) T Dalapon	2.433	2.499f	229.8E6	122.2E6	56.116	70.399 #
2) T 3,5-DICHL...	6.162	6.468	3948544	15666723	1.105	16.026 #
3) T 4-Nitroph...	6.718	6.964f	25788128	9253345	14.461	12.081
5) T DICAMBA	7.131	7.628f	11655151	9624661	1.177	2.437 #
6) T MCPP	7.335f	7.797f	164.3E6	5451417	25.491	3.117 #
7) T MCPA	7.445	8.016	7076062	26835159	<MDL	11.343 #
8) T DICHLORPROP	7.801	8.361	21960988	90720684	8.666	90.362 #
9) T 2,4-D	8.015	0.000	16923227	0	6.016	N.D. #
10) T Pentachlo...	8.265f	9.150	77444788	12378595	2.220	<MDL #
11) T 2,4,5-TP ...	8.846	9.551	3843994	72036254	<MDL	8.805 #
12) T 2,4,5-T	9.163	9.914f	70833307	96844888	5.040	12.476 #
13) T 2,4-DB	9.720	10.469f	210.1E6	46998270	91.933	58.394 #
14) T DINOSEB	10.857	10.893	37412528	5435658	3.677	<MDL #
15) T Picloram	10.683	11.934	99965865	102.4E6	5.453	8.340 #
16) T DCPA	11.158	11.934	77518103	102.4E6	4.554	9.089 #

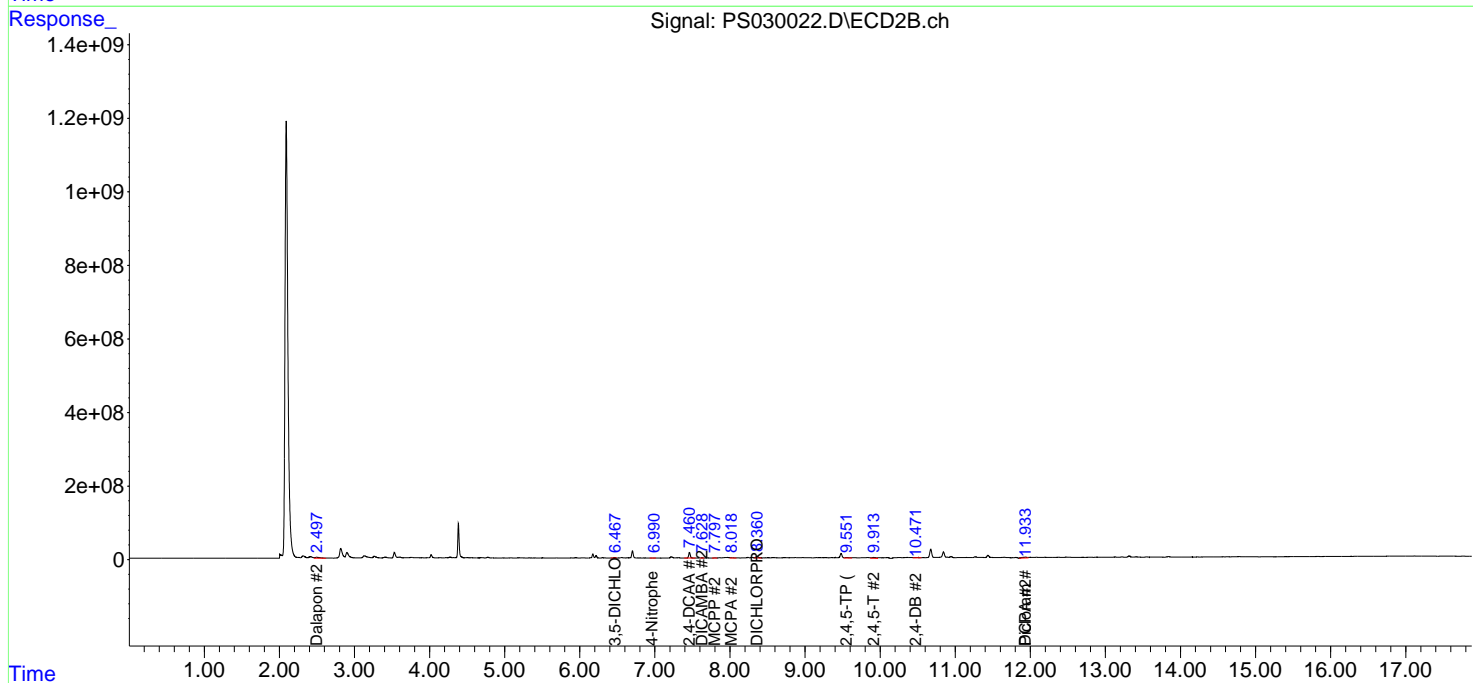
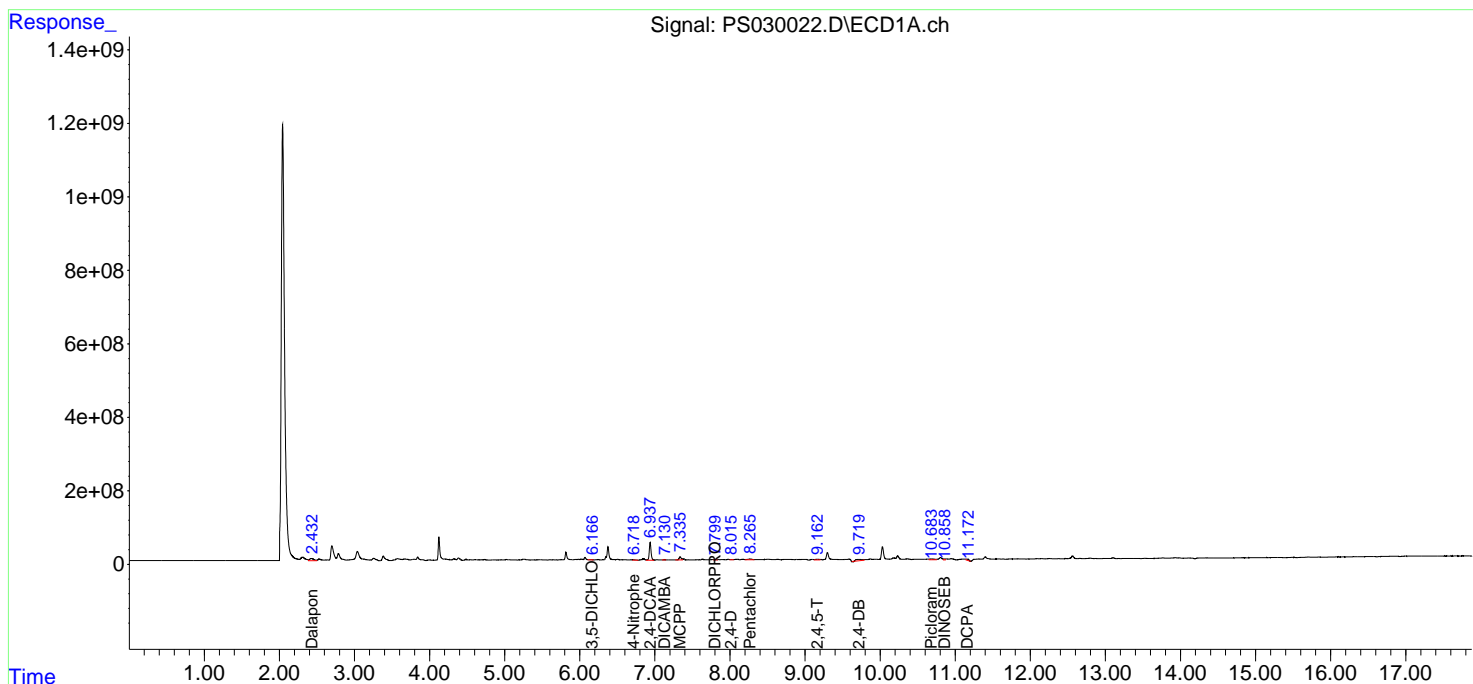
(f)=RT Delta > 1/2 Window (#)=Amounts differ by > 25% (m)=manual int.

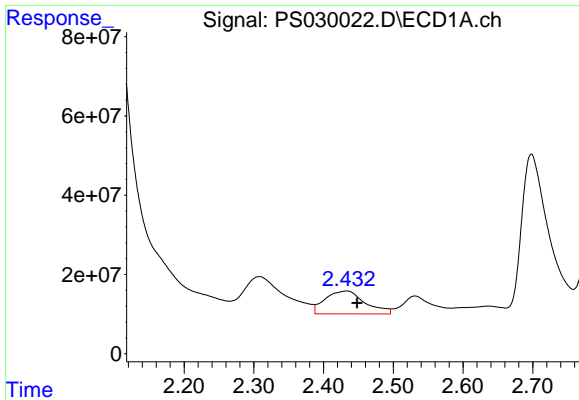
Data Path : Z:\pestpcbsrv\HPCHEM1\ECD_S\Data\PS050125\
 Data File : PS030022.D
 Signal(s) : Signal #1: ECD1A.ch Signal #2: ECD2B.ch
 Acq On : 01 May 2025 15:52
 Operator : AR\AJ
 Sample : Q1983-11
 Misc :
 ALS Vial : 9 Sample Multiplier: 1

Instrument :
 ECD_S
 ClientSampleId :
 OU4-PCS-TC-32-042325

Integration File signal 1: autoint1.e
 Integration File signal 2: autoint2.e
 Quant Time: May 02 01:29:35 2025
 Quant Method : Z:\pestpcbsrv\HPCHEM1\ECD_S\Method\PS042325.M
 Quant Title : 8080.M
 QLast Update : Wed Apr 23 12:57:40 2025
 Response via : Initial Calibration
 Integrator: ChemStation

Volume Inj. : 1 µl
 Signal #1 Phase : ZB-MR1 Signal #2 Phase: ZB-MR2
 Signal #1 Info : 30M x 0.32mm x0.5 Signal #2 Info : 30M x 0.32mm x 0.25µm

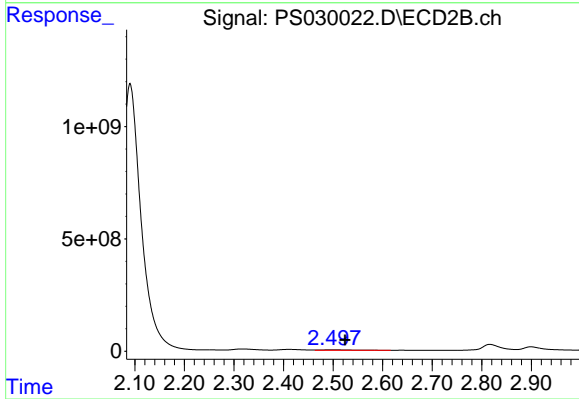




#1 Dalapon

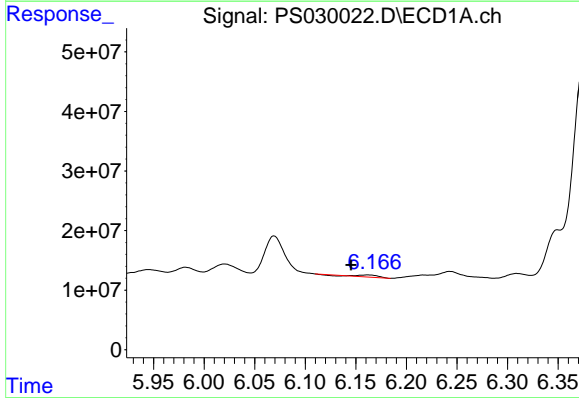
R.T.: 2.433 min
Delta R.T.: -0.015 min
Response: 229810877
Conc: 56.12 ng/ml

Instrument :
ECD_S
ClientSampleId :
OU4-PCS-TC-32-042325



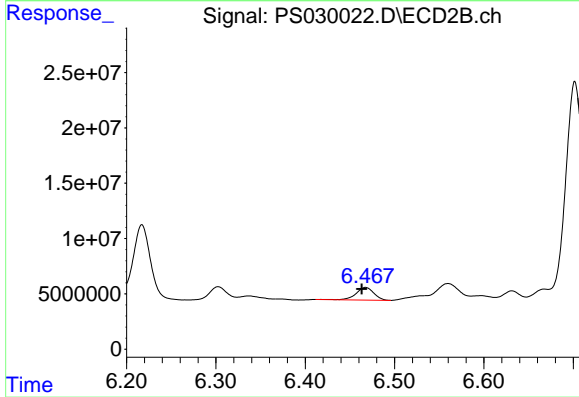
#1 Dalapon

R.T.: 2.499 min
Delta R.T.: -0.026 min
Response: 122223178
Conc: 70.40 ng/ml



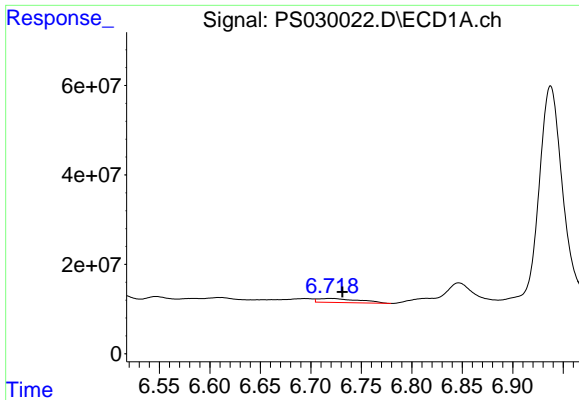
#2 3,5-DICHLOROBENZOIC ACID

R.T.: 6.162 min
Delta R.T.: 0.017 min
Response: 3948544
Conc: 1.10 ng/ml



#2 3,5-DICHLOROBENZOIC ACID

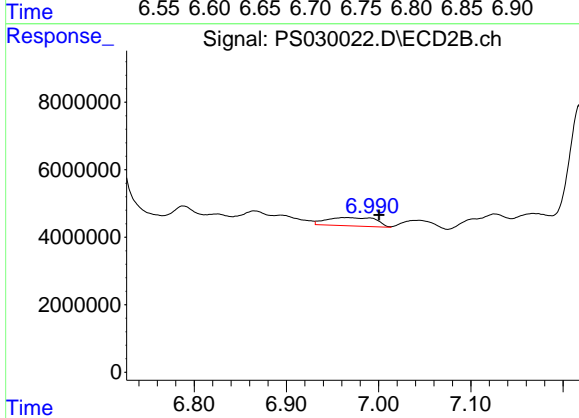
R.T.: 6.468 min
Delta R.T.: 0.004 min
Response: 15666723
Conc: 16.03 ng/ml



#3 4-Nitrophenol

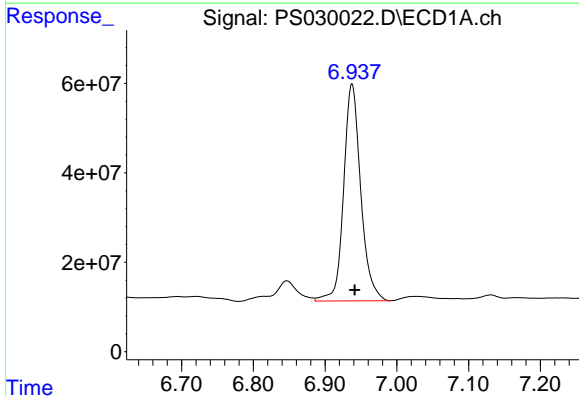
R.T.: 6.718 min
 Delta R.T.: -0.013 min
 Response: 25788128
 Conc: 14.46 ng/ml

Instrument :
 ECD_S
 ClientSampleId :
 OU4-PCS-TC-32-042325



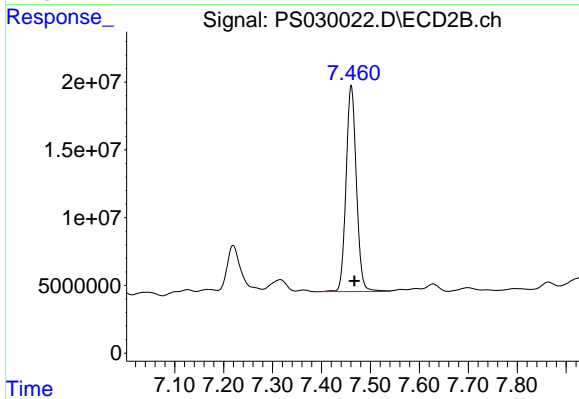
#3 4-Nitrophenol

R.T.: 6.964 min
 Delta R.T.: -0.037 min
 Response: 9253345
 Conc: 12.08 ng/ml



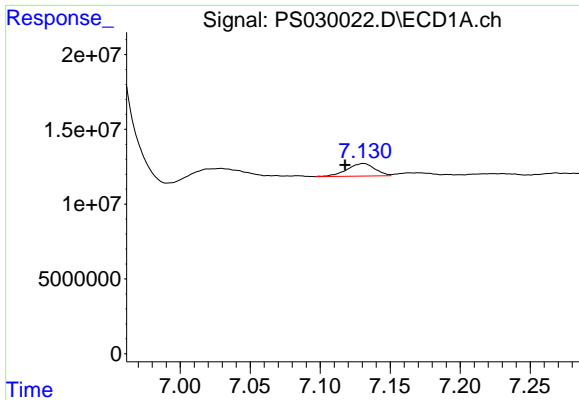
#4 2,4-DCAA

R.T.: 6.938 min
 Delta R.T.: -0.004 min
 Response: 804310408
 Conc: 326.81 ng/ml



#4 2,4-DCAA

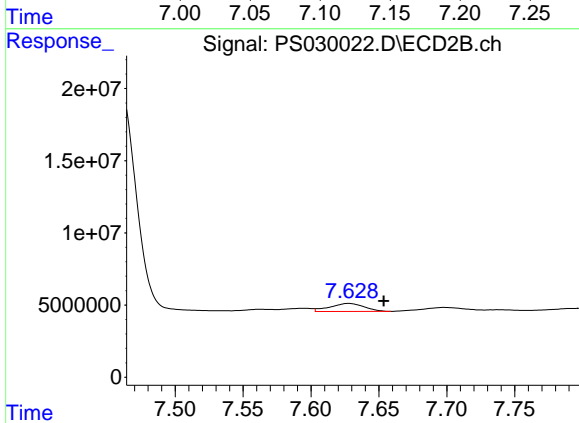
R.T.: 7.461 min
 Delta R.T.: -0.006 min
 Response: 223709231
 Conc: 317.54 ng/ml



#5 DICAMBA

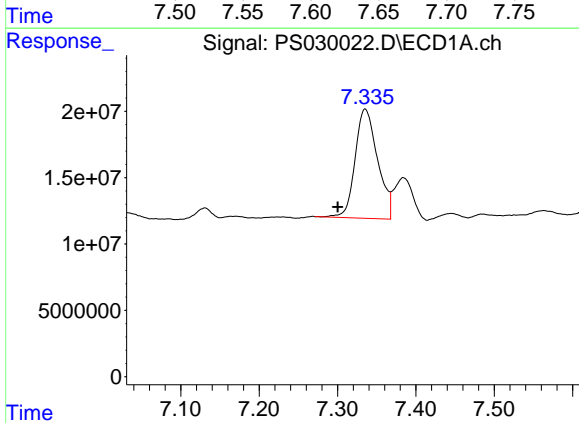
R.T.: 7.131 min
 Delta R.T.: 0.013 min
 Response: 11655151
 Conc: 1.18 ng/ml

Instrument :
 ECD_S
 ClientSampleId :
 OU4-PCS-TC-32-042325



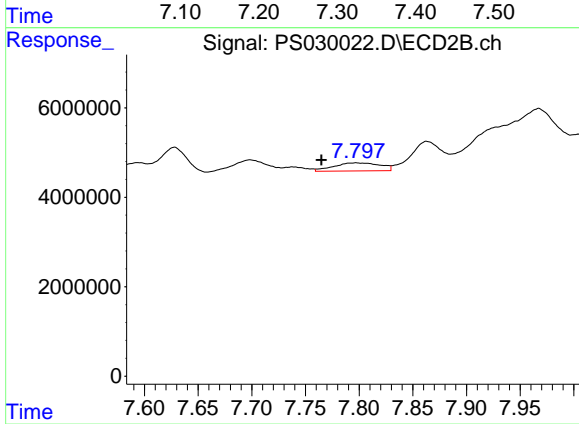
#5 DICAMBA

R.T.: 7.628 min
 Delta R.T.: -0.026 min
 Response: 9624661
 Conc: 2.44 ng/ml



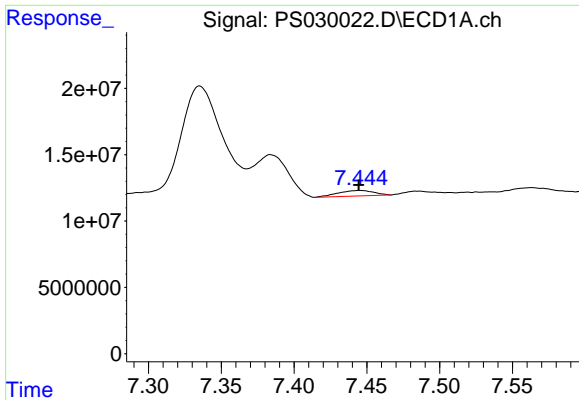
#6 MCP

R.T.: 7.335 min
 Delta R.T.: 0.035 min
 Response: 164254236
 Conc: 25.49 ug/ml



#6 MCP

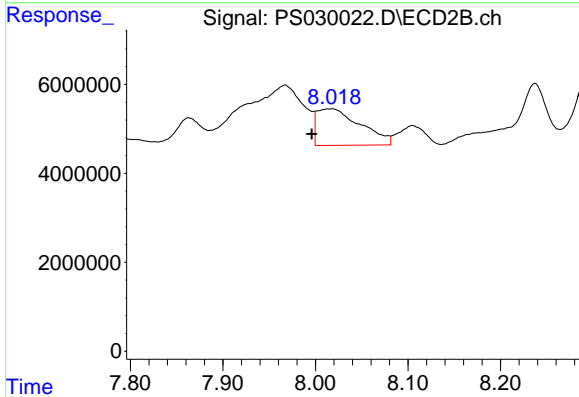
R.T.: 7.797 min
 Delta R.T.: 0.032 min
 Response: 5451417
 Conc: 3.12 ug/ml



#7 MCPA

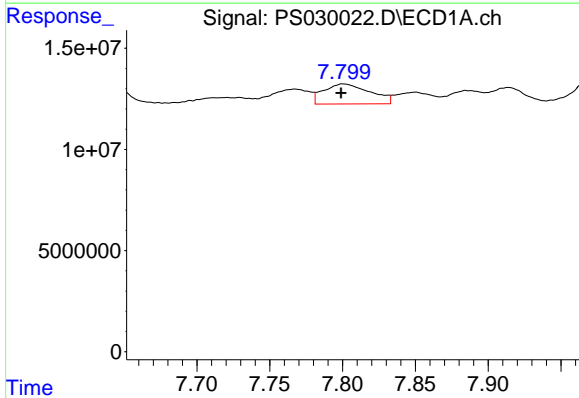
R.T.: 7.445 min
 Delta R.T.: 0.000 min
 Response: 7076062
 Conc: N.D.

Instrument :
 ECD_S
 ClientSampleId :
 OU4-PCS-TC-32-042325



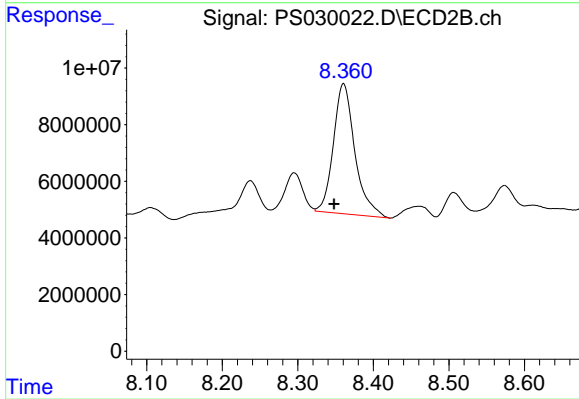
#7 MCPA

R.T.: 8.016 min
 Delta R.T.: 0.020 min
 Response: 26835159
 Conc: 11.34 ug/ml



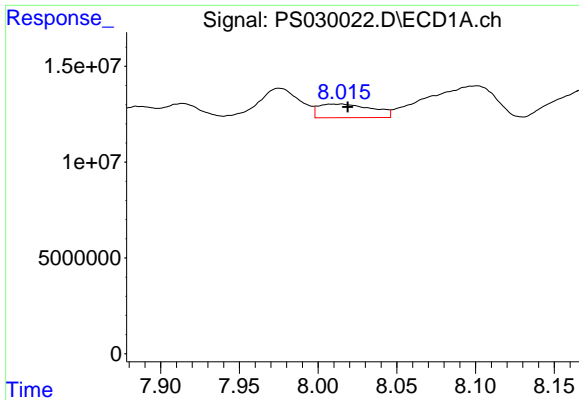
#8 DICHLORPROP

R.T.: 7.801 min
 Delta R.T.: 0.002 min
 Response: 21960988
 Conc: 8.67 ng/ml



#8 DICHLORPROP

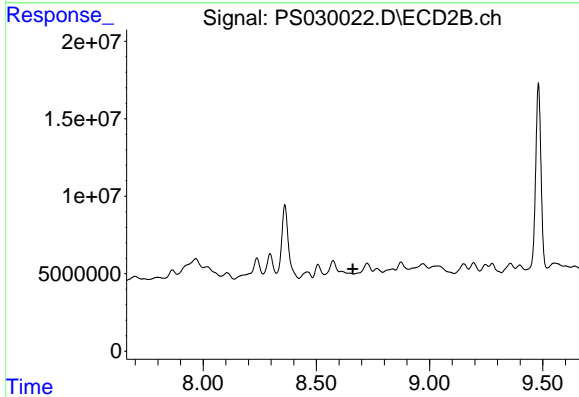
R.T.: 8.361 min
 Delta R.T.: 0.013 min
 Response: 90720684
 Conc: 90.36 ng/ml



#9 2,4-D

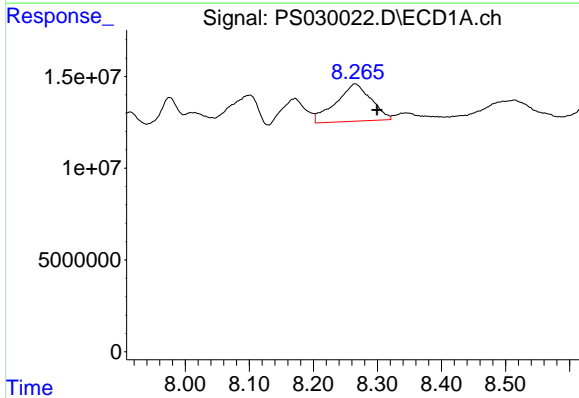
R.T.: 8.015 min
 Delta R.T.: -0.004 min
 Response: 16923227
 Conc: 6.02 ng/ml

Instrument :
 ECD_S
 ClientSampleId :
 OU4-PCS-TC-32-042325



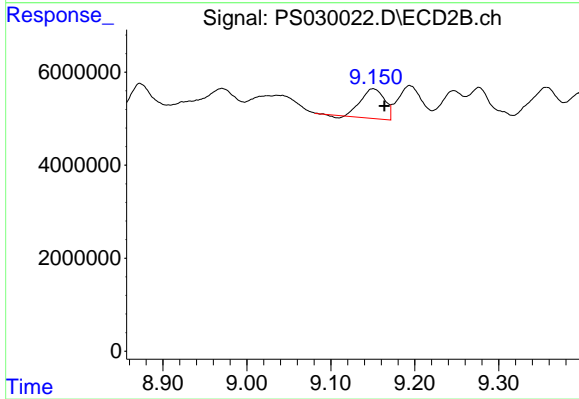
#9 2,4-D

R.T.: 0.000 min
 Exp R.T. : 8.661 min
 Response: 0
 Conc: N.D.



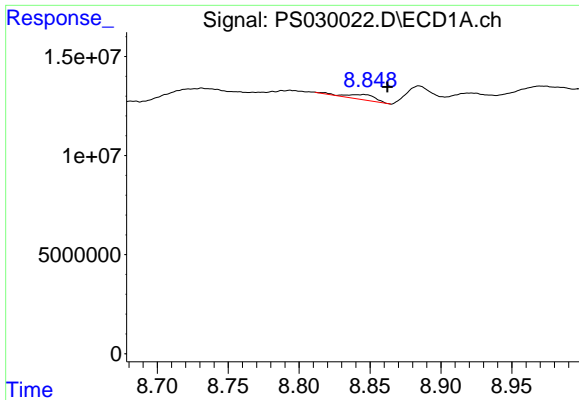
#10 Pentachlorophenol

R.T.: 8.265 min
 Delta R.T.: -0.035 min
 Response: 77444788
 Conc: 2.22 ng/ml



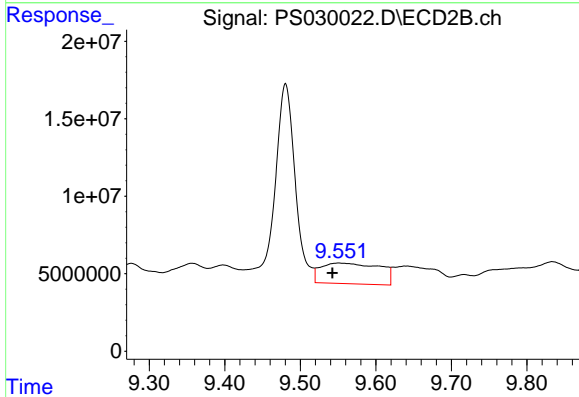
#10 Pentachlorophenol

R.T.: 9.150 min
 Delta R.T.: -0.013 min
 Response: 12378595
 Conc: N.D.

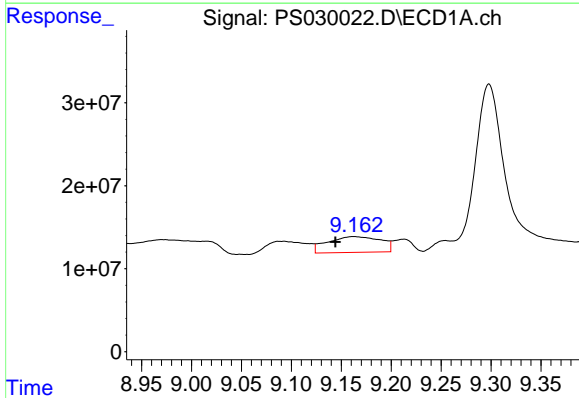


#11 2,4,5-TP (SILVEX)
 R.T.: 8.846 min
 Delta R.T.: -0.016 min
 Response: 3843994
 Conc: N.D.

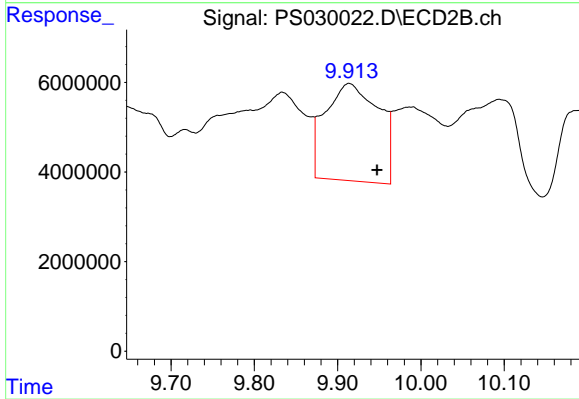
Instrument :
 ECD_S
 ClientSampleId :
 OU4-PCS-TC-32-042325



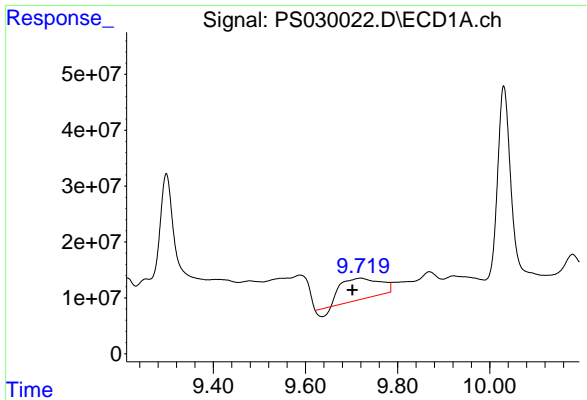
#11 2,4,5-TP (SILVEX)
 R.T.: 9.551 min
 Delta R.T.: 0.008 min
 Response: 72036254
 Conc: 8.80 ng/ml



#12 2,4,5-T
 R.T.: 9.163 min
 Delta R.T.: 0.018 min
 Response: 70833307
 Conc: 5.04 ng/ml



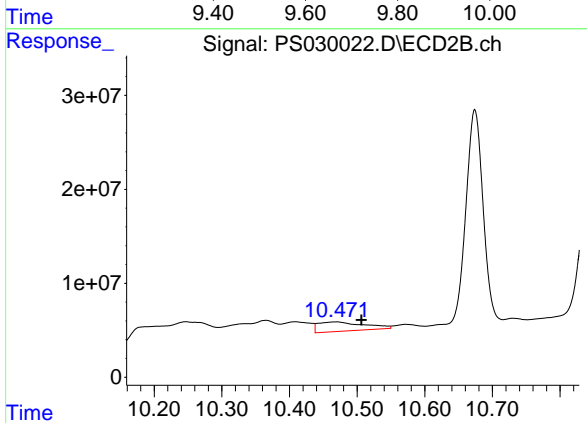
#12 2,4,5-T
 R.T.: 9.914 min
 Delta R.T.: -0.033 min
 Response: 96844888
 Conc: 12.48 ng/ml



#13 2,4-DB

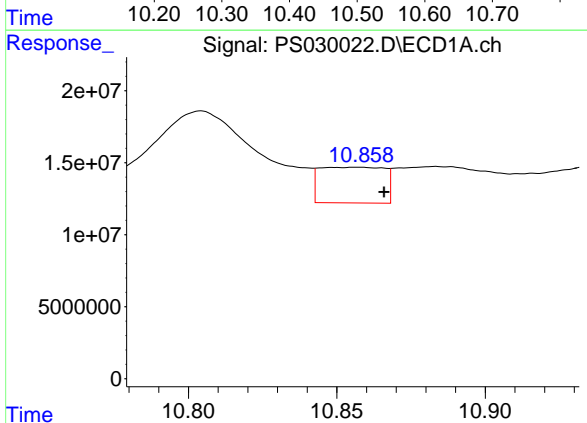
R.T.: 9.720 min
 Delta R.T.: 0.018 min
 Response: 210099386
 Conc: 91.93 ng/ml

Instrument :
 ECD_S
 ClientSampleId :
 OU4-PCS-TC-32-042325



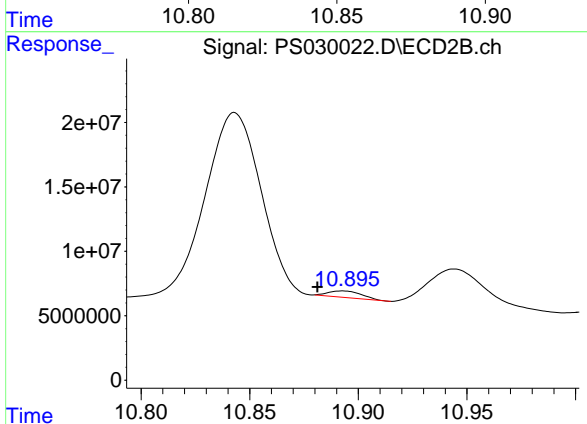
#13 2,4-DB

R.T.: 10.469 min
 Delta R.T.: -0.038 min
 Response: 46998270
 Conc: 58.39 ng/ml



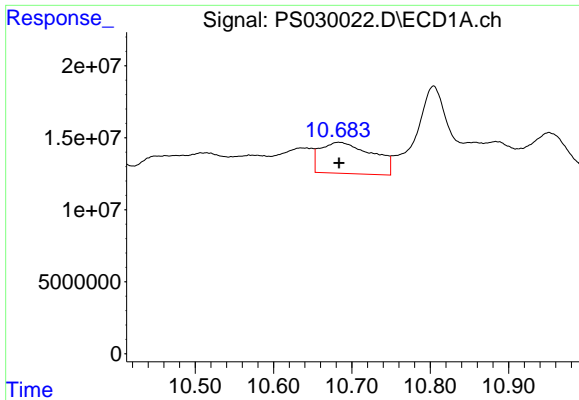
#14 DINOSEB

R.T.: 10.857 min
 Delta R.T.: -0.009 min
 Response: 37412528
 Conc: 3.68 ng/ml



#14 DINOSEB

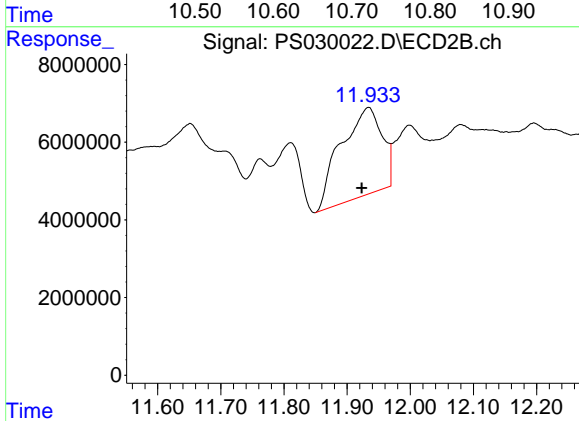
R.T.: 10.893 min
 Delta R.T.: 0.012 min
 Response: 5435658
 Conc: N.D.



#15 Picloram

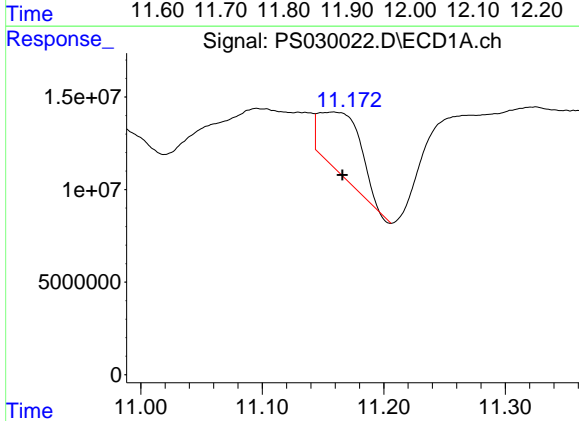
R.T.: 10.683 min
 Delta R.T.: 0.000 min
 Response: 99965865
 Conc: 5.45 ng/ml

Instrument :
 ECD_S
 ClientSampleId :
 OU4-PCS-TC-32-042325



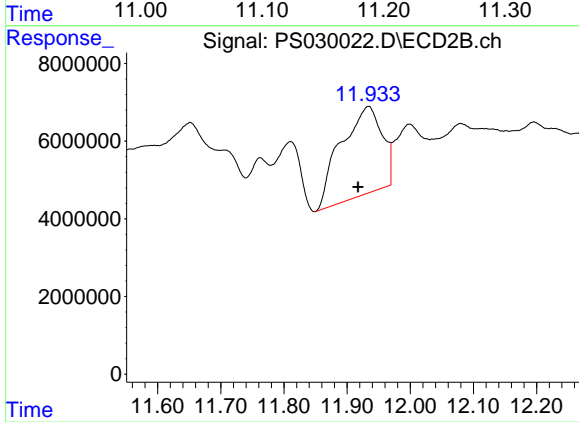
#15 Picloram

R.T.: 11.934 min
 Delta R.T.: 0.011 min
 Response: 102443283
 Conc: 8.34 ng/ml



#16 DCPA

R.T.: 11.158 min
 Delta R.T.: -0.008 min
 Response: 77518103
 Conc: 4.55 ng/ml



#16 DCPA

R.T.: 11.934 min
 Delta R.T.: 0.016 min
 Response: 102443283
 Conc: 9.09 ng/ml