

Data Path : Z:\pestpcbsrv\HPCHEM1\ECD_S\Data\PS050321\
 Data File : PS014895.D
 Signal(s) : Signal #1: ECD1A.ch Signal #2: ECD2B.ch
 Acq On : 03 May 2021 15:36
 Operator : DD\AJ
 Sample : HSTDCCC750
 Misc :
 ALS Vial : 3 Sample Multiplier: 1

Instrument :
 ECD_S
 ClientSampleId :

Integration File signal 1: autoint1.e
 Integration File signal 2: autoint2.e
 Quant Time: May 03 16:06:23 2021
 Quant Method : Z:\pestpcbsrv\HPCHEM1\ECD_S\Method\PS040821.M
 Quant Title : 8080.M
 QLast Update : Thu Apr 08 14:34:06 2021
 Response via : Initial Calibration
 Integrator: ChemStation

Volume Inj. : 2 µl
 Signal #1 Phase : Rtx-CLPesticides Signal #2 Phase: Rtx-CLPesticides2
 Signal #1 Info : 30M x 0.32mm x0.5 Signal #2 Info : 30M x 0.32mm x 0.25µm

	Compound	RT#1	RT#2	Resp#1	Resp#2	ng/ml	ng/ml

System Monitoring Compounds							
4) S	2,4-DCAA	7.154	6.884	1301.8E6	367.3E6	855.803	789.072
Target Compounds							
1) T	Dalapon	3.005	2.605	1319.1E6	436.2E6	731.529	670.245
2) T	3,5-DICHL...	6.381	6.047	1664.2E6	548.3E6	803.200	747.714
3) T	4-Nitroph...	6.990	6.501	627.3E6	194.1E6	771.965	687.532
5) T	DICAMBA	7.342	7.049	4700.1E6	1542.5E6	807.811	762.666
6) T	MCP P	7.509	7.145	347.4E6	126.8E6	79.786	75.304
7) T	MCPA	7.657	7.361	493.8E6	181.4E6	79.347	74.681
8) T	DICHLORPROP	8.028	7.675	1125.3E6	379.9E6	804.186	752.626
9) T	2,4-D	8.258	7.972	1251.8E6	442.8E6	787.319	796.301
10) T	Pentachlo...	8.562	8.393	16771.6E6	5143.8E6	798.012	765.160
11) T	2,4,5-TP ...	9.106	8.755	6523.6E6	2099.6E6	796.882	768.598
12) T	2,4,5-T	9.392	9.135	6488.7E6	2006.8E6	788.790	767.274
13) T	2,4-DB	9.940	9.641	1197.0E6	264.2E6	786.605	761.557
14) T	DINOSEB	11.088	9.969	5061.9E6	1466.2E6	785.563	761.378
15) T	Picloram	10.917	10.955	7954.5E6	2600.4E6	710.966	693.454
16) T	DCPA	11.354	10.895	9593.3E6	3113.7E6	778.551	766.791

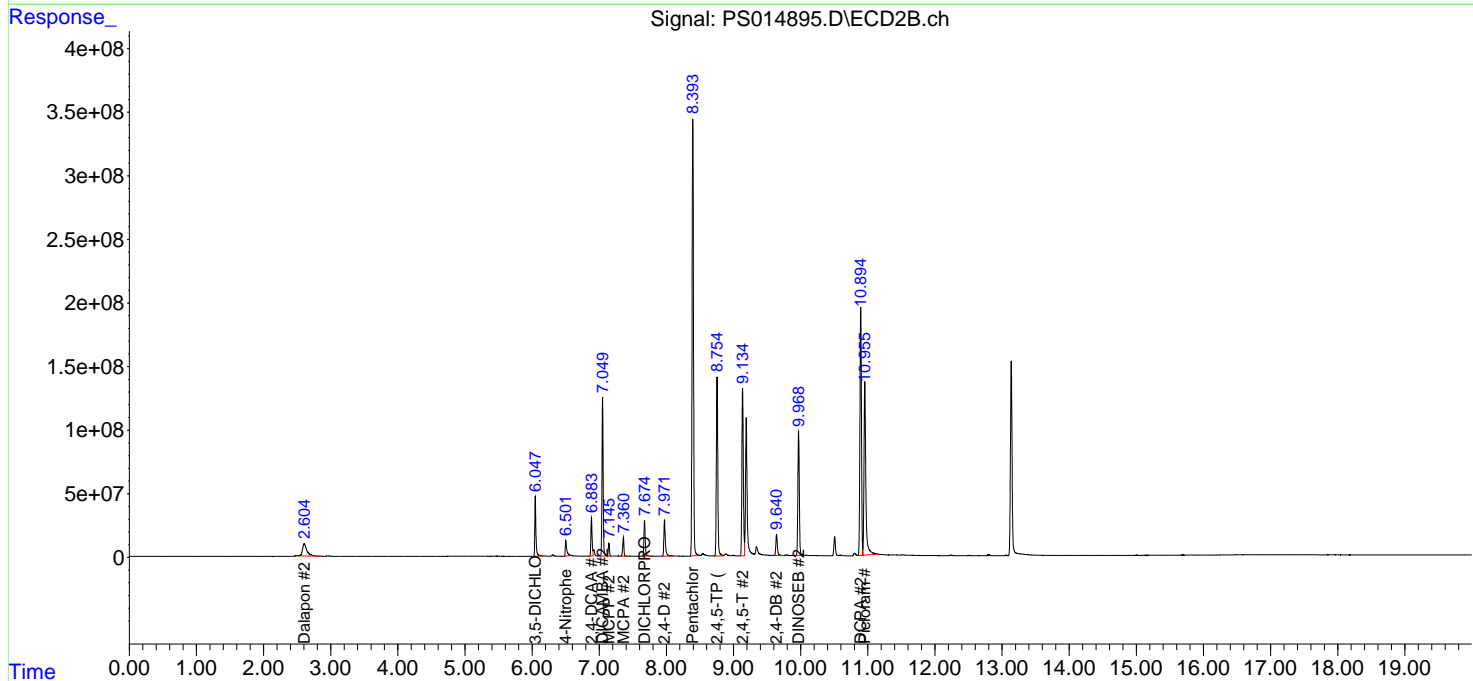
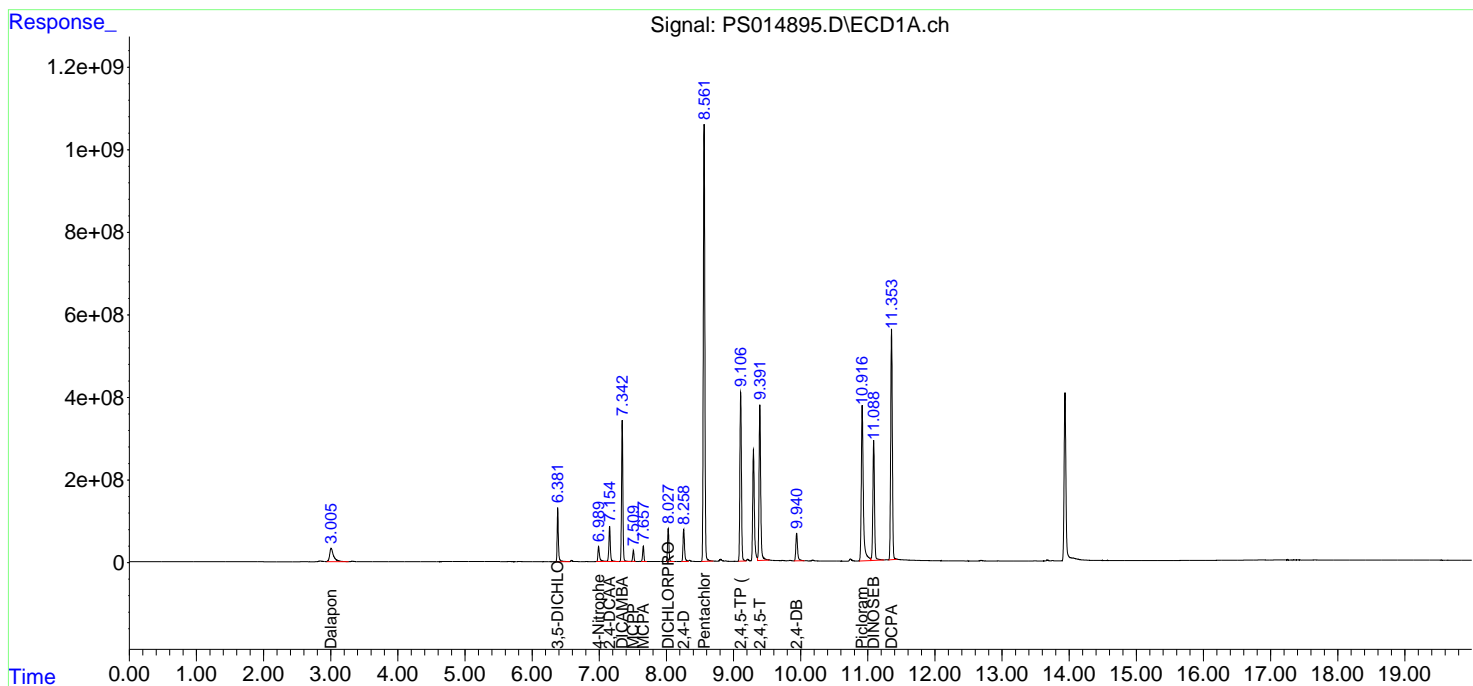
(f)=RT Delta > 1/2 Window (#)=Amounts differ by > 25% (m)=manual int.

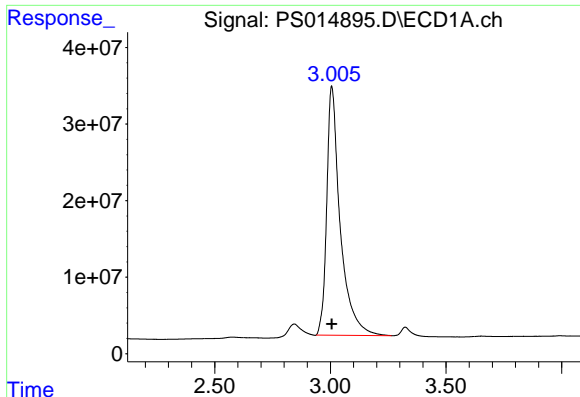
Data Path : Z:\pestpcbsrv\HPCHEM1\ECD_S\Data\PS050321\
 Data File : PS014895.D
 Signal(s) : Signal #1: ECD1A.ch Signal #2: ECD2B.ch
 Acq On : 03 May 2021 15:36
 Operator : DD\AJ
 Sample : HSTDCCC750
 Misc :
 ALS Vial : 3 Sample Multiplier: 1

Instrument :
 ECD_S
 ClientSampled :

Integration File signal 1: autoint1.e
 Integration File signal 2: autoint2.e
 Quant Time: May 03 16:06:23 2021
 Quant Method : Z:\pestpcbsrv\HPCHEM1\ECD_S\Method\PS040821.M
 Quant Title : 8080.M
 QLast Update : Thu Apr 08 14:34:06 2021
 Response via : Initial Calibration
 Integrator: ChemStation

Volume Inj. : 2 µl
 Signal #1 Phase : Rtx-CLPesticides Signal #2 Phase: Rtx-CLPesticides2
 Signal #1 Info : 30M x 0.32mm x0.5 Signal #2 Info : 30M x 0.32mm x 0.25µm

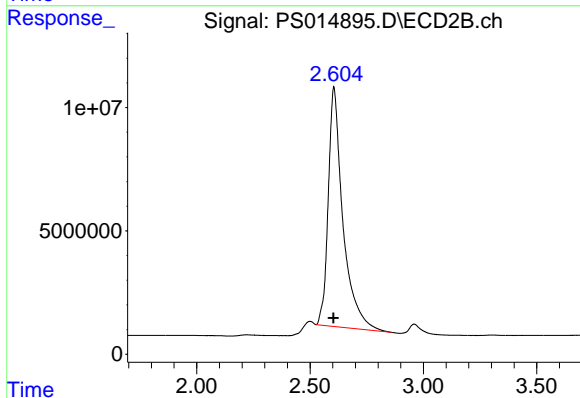




#1 Dalapon

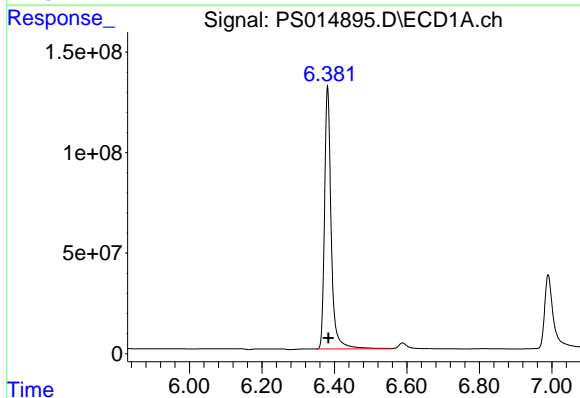
R.T.: 3.005 min
 Delta R.T.: 0.000 min
 Response: 1319072234
 Conc: 731.53 ng/ml

Instrument :
 ECD_S
 ClientSampled :



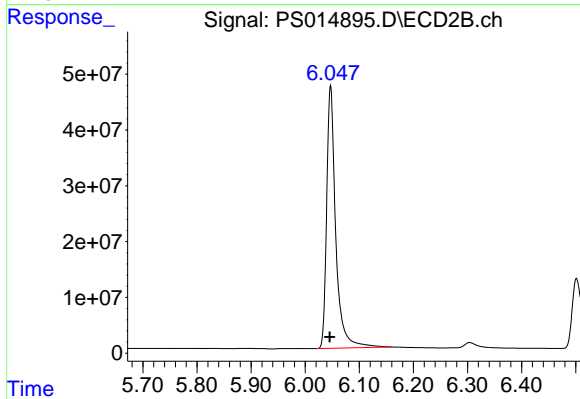
#1 Dalapon

R.T.: 2.605 min
 Delta R.T.: 0.002 min
 Response: 436212067
 Conc: 670.24 ng/ml



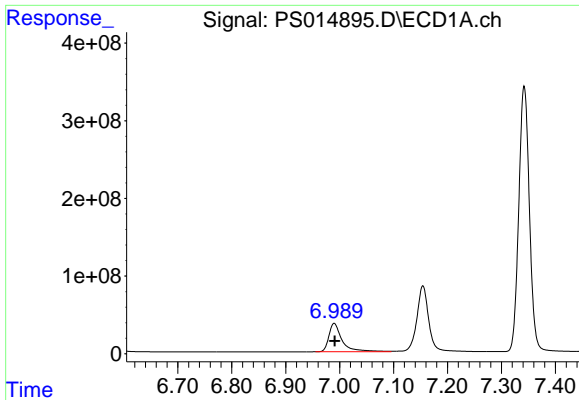
#2 3,5-DICHLOROBENZOIC ACID

R.T.: 6.381 min
 Delta R.T.: -0.003 min
 Response: 1664233523
 Conc: 803.20 ng/ml



#2 3,5-DICHLOROBENZOIC ACID

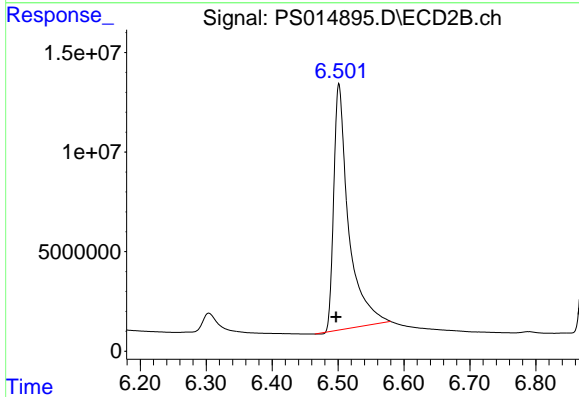
R.T.: 6.047 min
 Delta R.T.: 0.002 min
 Response: 548296388
 Conc: 747.71 ng/ml



#3 4-Nitrophenol

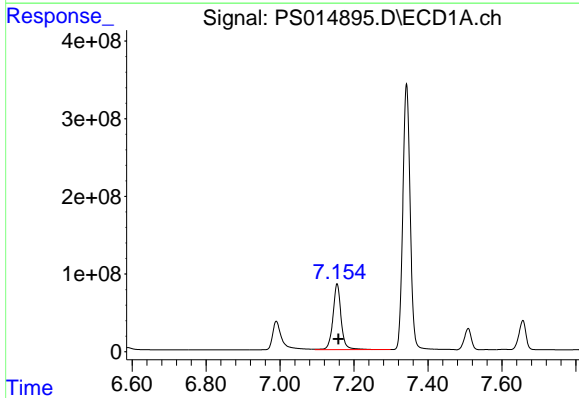
R.T.: 6.990 min
 Delta R.T.: 0.000 min
 Response: 627315773
 Conc: 771.96 ng/ml

Instrument :
 ECD_S
 ClientSampled :



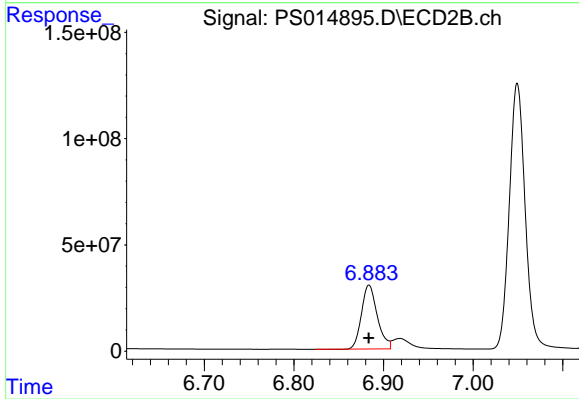
#3 4-Nitrophenol

R.T.: 6.501 min
 Delta R.T.: 0.004 min
 Response: 194113003
 Conc: 687.53 ng/ml



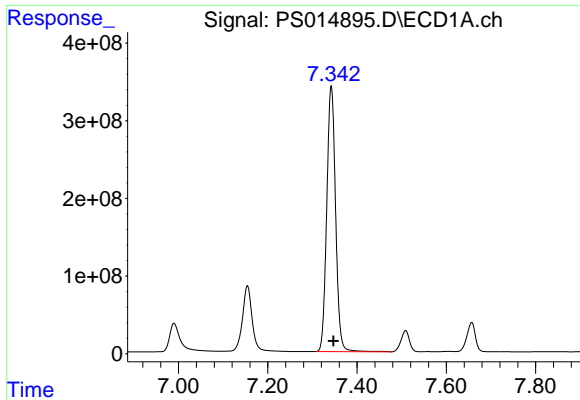
#4 2,4-DCAA

R.T.: 7.154 min
 Delta R.T.: -0.004 min
 Response: 1301843942
 Conc: 855.80 ng/ml



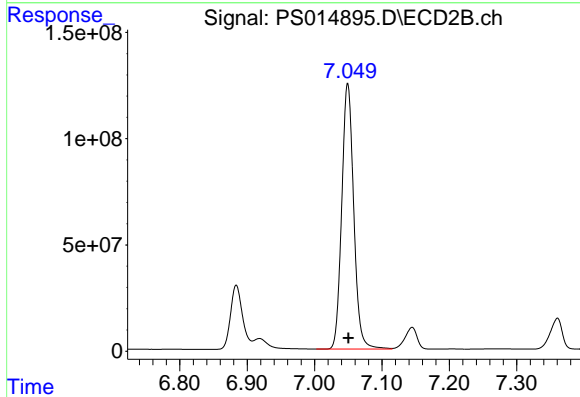
#4 2,4-DCAA

R.T.: 6.884 min
 Delta R.T.: 0.000 min
 Response: 367277451
 Conc: 789.07 ng/ml

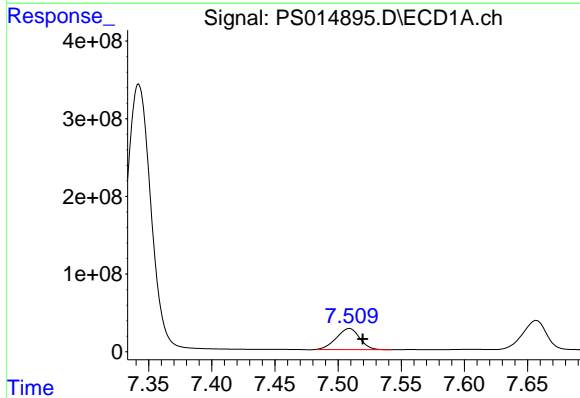


#5 DICAMBA
 R.T.: 7.342 min
 Delta R.T.: -0.005 min
 Response: 4700131945
 Conc: 807.81 ng/ml

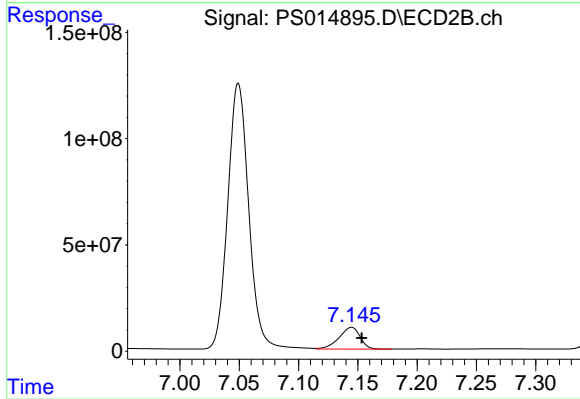
Instrument :
 ECD_S
 ClientSampleId :



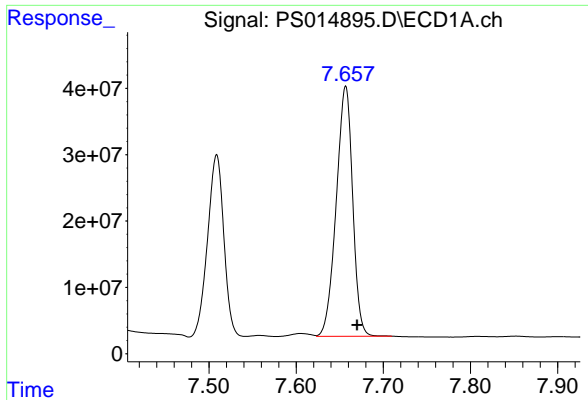
#5 DICAMBA
 R.T.: 7.049 min
 Delta R.T.: -0.001 min
 Response: 1542511347
 Conc: 762.67 ng/ml



#6 MCP
 R.T.: 7.509 min
 Delta R.T.: -0.011 min
 Response: 347406119
 Conc: 79.79 ug/ml

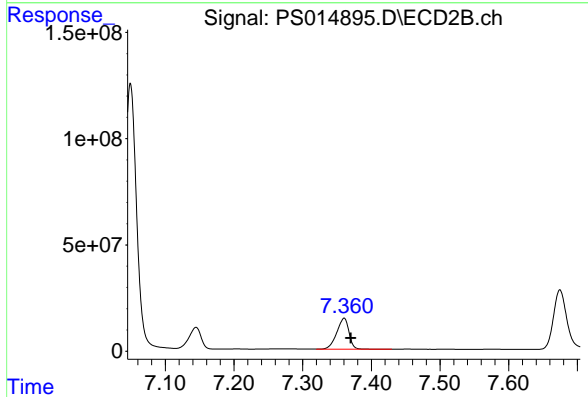


#6 MCP
 R.T.: 7.145 min
 Delta R.T.: -0.009 min
 Response: 126815038
 Conc: 75.30 ug/ml

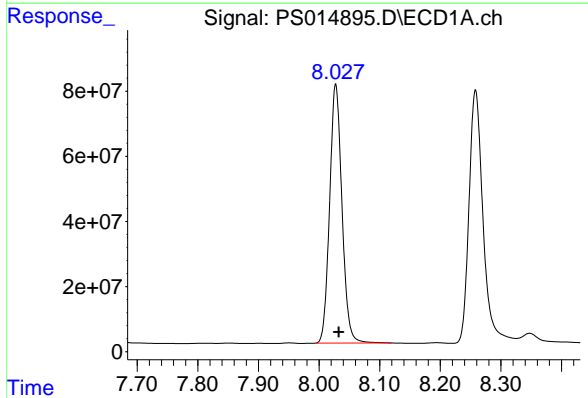


#7 MCPA
 R.T.: 7.657 min
 Delta R.T.: -0.013 min
 Response: 493771199
 Conc: 79.35 ug/ml

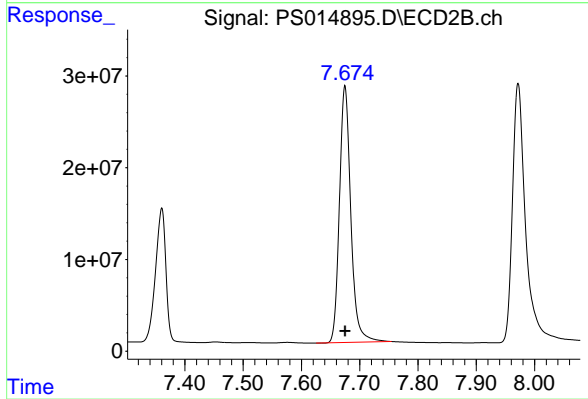
Instrument :
 ECD_S
 ClientSampleId :



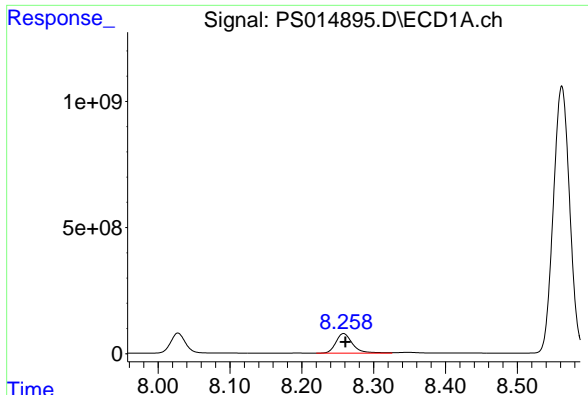
#7 MCPA
 R.T.: 7.361 min
 Delta R.T.: -0.010 min
 Response: 181364630
 Conc: 74.68 ug/ml



#8 DICHLORPROP
 R.T.: 8.028 min
 Delta R.T.: -0.005 min
 Response: 1125322464
 Conc: 804.19 ng/ml

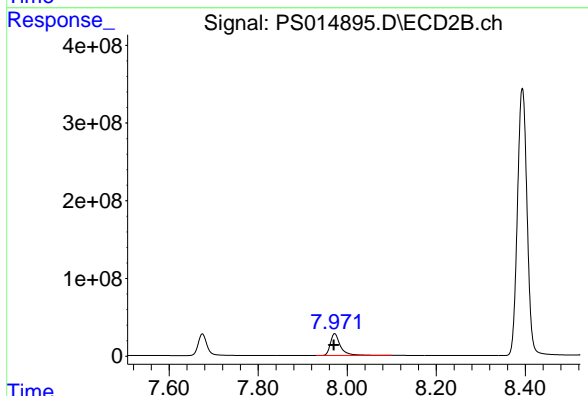


#8 DICHLORPROP
 R.T.: 7.675 min
 Delta R.T.: 0.000 min
 Response: 379941291
 Conc: 752.63 ng/ml

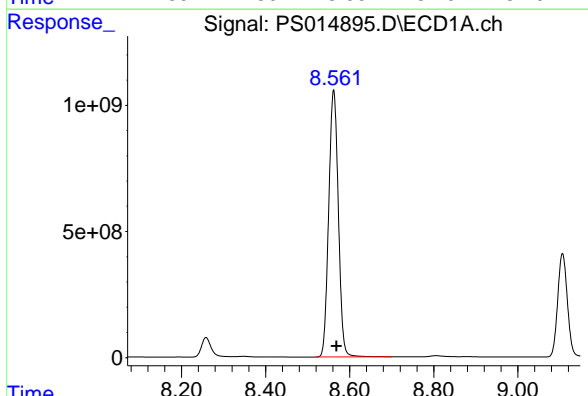


#9 2,4-D
 R.T.: 8.258 min
 Delta R.T.: -0.003 min
 Response: 1251825374
 Conc: 787.32 ng/ml

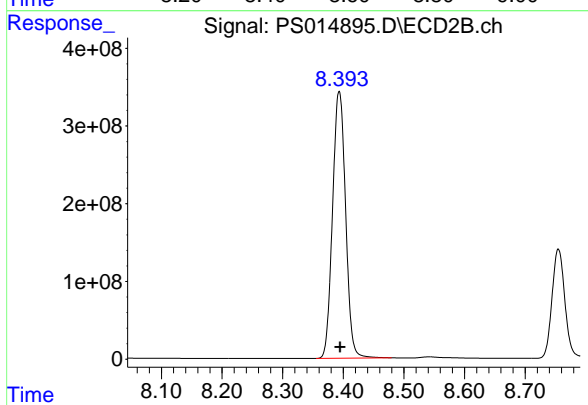
Instrument :
 ECD_S
 ClientSampleId :



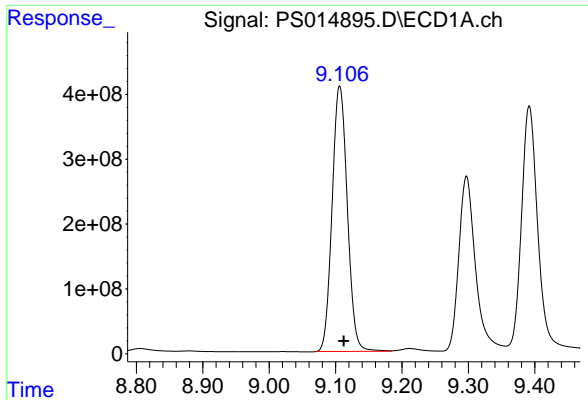
#9 2,4-D
 R.T.: 7.972 min
 Delta R.T.: 0.002 min
 Response: 442818199
 Conc: 796.30 ng/ml



#10 Pentachlorophenol
 R.T.: 8.562 min
 Delta R.T.: -0.007 min
 Response: 16771603127
 Conc: 798.01 ng/ml

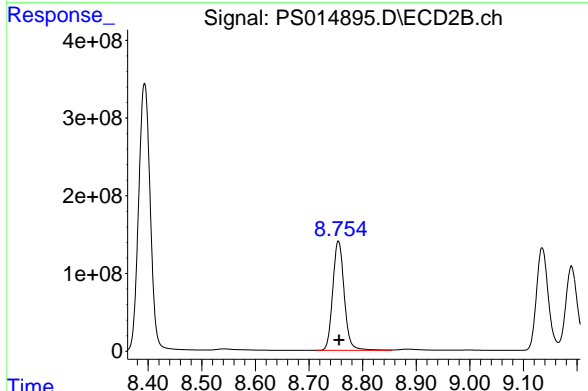


#10 Pentachlorophenol
 R.T.: 8.393 min
 Delta R.T.: -0.002 min
 Response: 5143825158
 Conc: 765.16 ng/ml

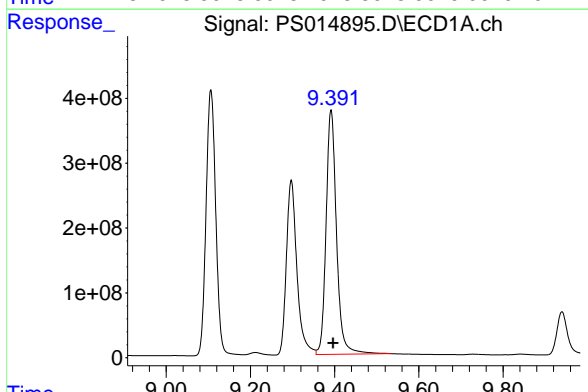


#11 2,4,5-TP (SILVEX)
 R.T.: 9.106 min
 Delta R.T.: -0.006 min
 Response: 6523612147
 Conc: 796.88 ng/ml

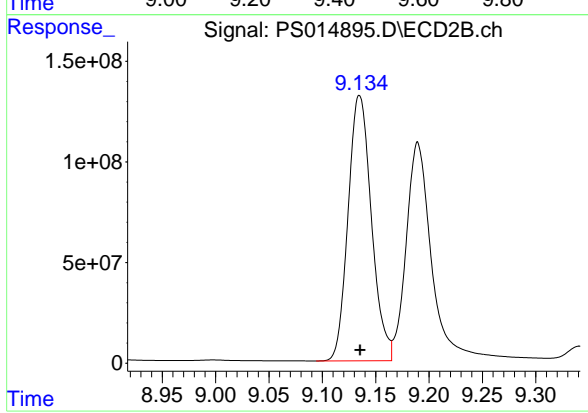
Instrument :
 ECD_S
 ClientSampled :



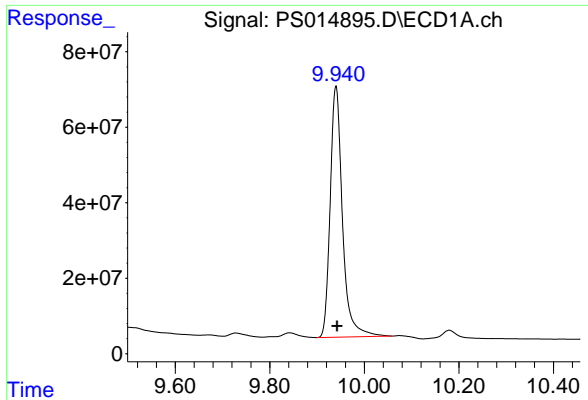
#11 2,4,5-TP (SILVEX)
 R.T.: 8.755 min
 Delta R.T.: -0.001 min
 Response: 2099555384
 Conc: 768.60 ng/ml



#12 2,4,5-T
 R.T.: 9.392 min
 Delta R.T.: -0.005 min
 Response: 6488658860
 Conc: 788.79 ng/ml

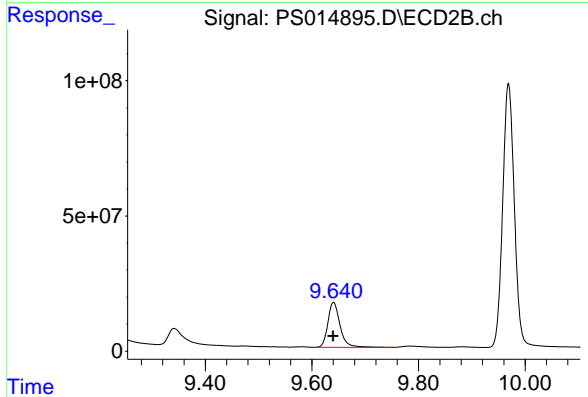


#12 2,4,5-T
 R.T.: 9.135 min
 Delta R.T.: 0.000 min
 Response: 2006837882
 Conc: 767.27 ng/ml

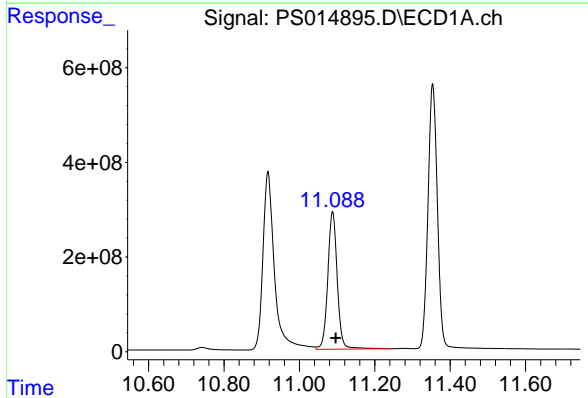


#13 2,4-DB
 R.T.: 9.940 min
 Delta R.T.: -0.003 min
 Response: 1197020867
 Conc: 786.61 ng/ml

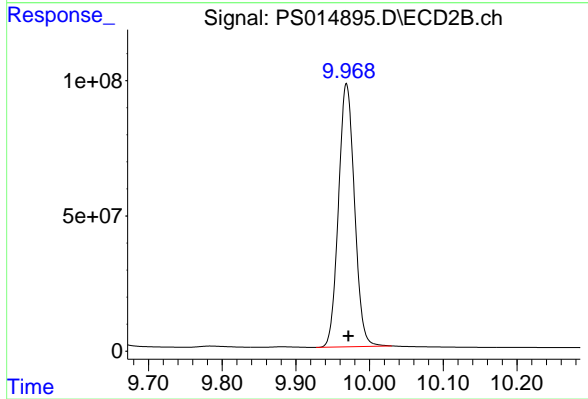
Instrument :
 ECD_S
 ClientSampled :



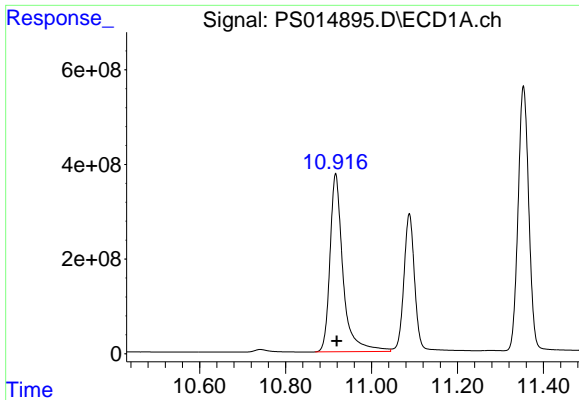
#13 2,4-DB
 R.T.: 9.641 min
 Delta R.T.: 0.000 min
 Response: 264162757
 Conc: 761.56 ng/ml



#14 DINOSEB
 R.T.: 11.088 min
 Delta R.T.: -0.009 min
 Response: 5061893618
 Conc: 785.56 ng/ml



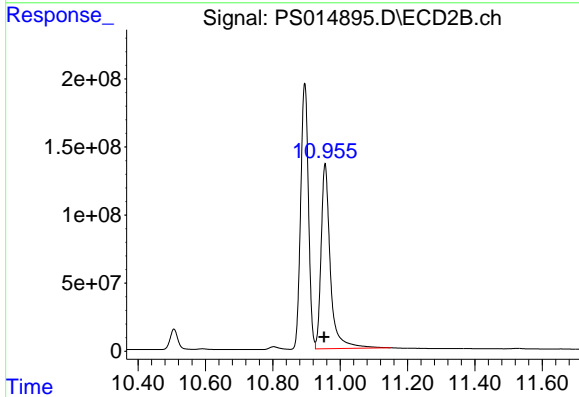
#14 DINOSEB
 R.T.: 9.969 min
 Delta R.T.: -0.003 min
 Response: 1466167300
 Conc: 761.38 ng/ml



#15 Picloram

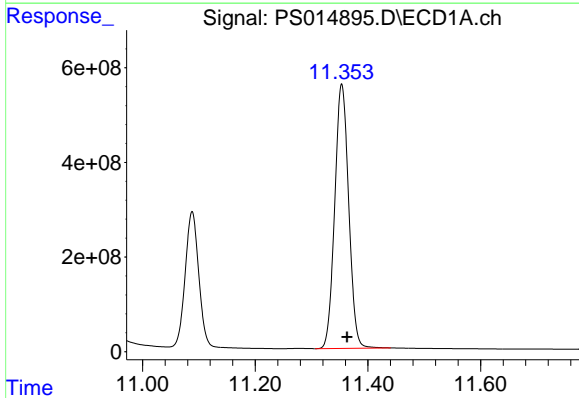
R.T.: 10.917 min
 Delta R.T.: -0.002 min
 Response: 7954499538
 Conc: 710.97 ng/ml

Instrument :
 ECD_S
 ClientSampled :



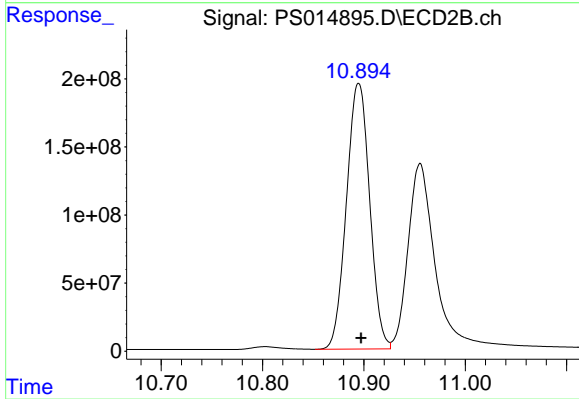
#15 Picloram

R.T.: 10.955 min
 Delta R.T.: 0.003 min
 Response: 2600383117
 Conc: 693.45 ng/ml



#16 DCPA

R.T.: 11.354 min
 Delta R.T.: -0.009 min
 Response: 9593332803
 Conc: 778.55 ng/ml



#16 DCPA

R.T.: 10.895 min
 Delta R.T.: -0.002 min
 Response: 3113692689
 Conc: 766.79 ng/ml