

Data Path : Z:\pestpcbsrv\HPCHEM1\ECD_S\Data\PS050422\
 Data File : PS019275.D
 Signal(s) : Signal #1: ECD1A.ch Signal #2: ECD2B.ch
 Acq On : 04 May 2022 20:10
 Operator : AJ\MA
 Sample : N2559-01
 Misc :
 ALS Vial : 17 Sample Multiplier: 1

Instrument :
 ECD_S
 ClientSampleId :

Integration File signal 1: autoint1.e
 Integration File signal 2: autoint2.e
 Quant Time: May 05 01:05:54 2022
 Quant Method : Z:\pestpcbsrv\HPCHEM1\ECD_S\Method\PS050422.M
 Quant Title : 8080.M
 QLast Update : Wed May 04 16:27:11 2022
 Response via : Initial Calibration
 Integrator: ChemStation

Volume Inj. : 2 µl
 Signal #1 Phase : Rtx-CLPesticides Signal #2 Phase: Rtx-CLPesticides2
 Signal #1 Info : 30M x 0.32mm x0.5 Signal #2 Info : 30M x 0.32mm x 0.25µm

	Compound	RT#1	RT#2	Resp#1	Resp#2	ng/ml	ng/ml

System Monitoring Compounds							
4) S	2,4-DCAA	7.218	6.796	1387.9E6	413.4E6	508.221	533.735
Target Compounds							
1) T	Dalapon	2.983f	2.490f	223.3E6	26205887	46.249	29.481 #
2) T	3,5-DICHL...	6.413	5.998	207921	44545934	<MDL	38.196 #
5) T	DICAMBA	7.419	6.938	53860879	10812611	4.877	3.227 #
6) T	MCPD	7.576	7.068	11847807	1056536	1.325	<MDL #
7) T	MCPA	0.000	7.305	0	866276	N.D.	<MDL
8) T	DICHLORPROP	8.047f	7.605	3406953	31051541	1.218	36.233 #
9) T	2,4-D	8.339	7.861	3267712	13470574	1.036	13.489 #
10) T	Pentachlo...	8.652	8.306	20186725	6734177	<MDL	<MDL #
11) T	2,4,5-TP ...	9.256f	8.626f	60822583	874.0E6	3.365	181.609 #
12) T	2,4,5-T	9.434f	9.058	1149.1E6	34570049	54.326	7.984 #
13) T	2,4-DB	10.074f	9.565	633.1E6	216.7E6	147.636	381.197 #
14) T	DINOSEB	11.156	9.881	4777.6E6	534.0E6	289.350	184.266 #
15) T	Picloram	10.984	10.873	2814.5E6	366.7E6	96.286	61.315 #

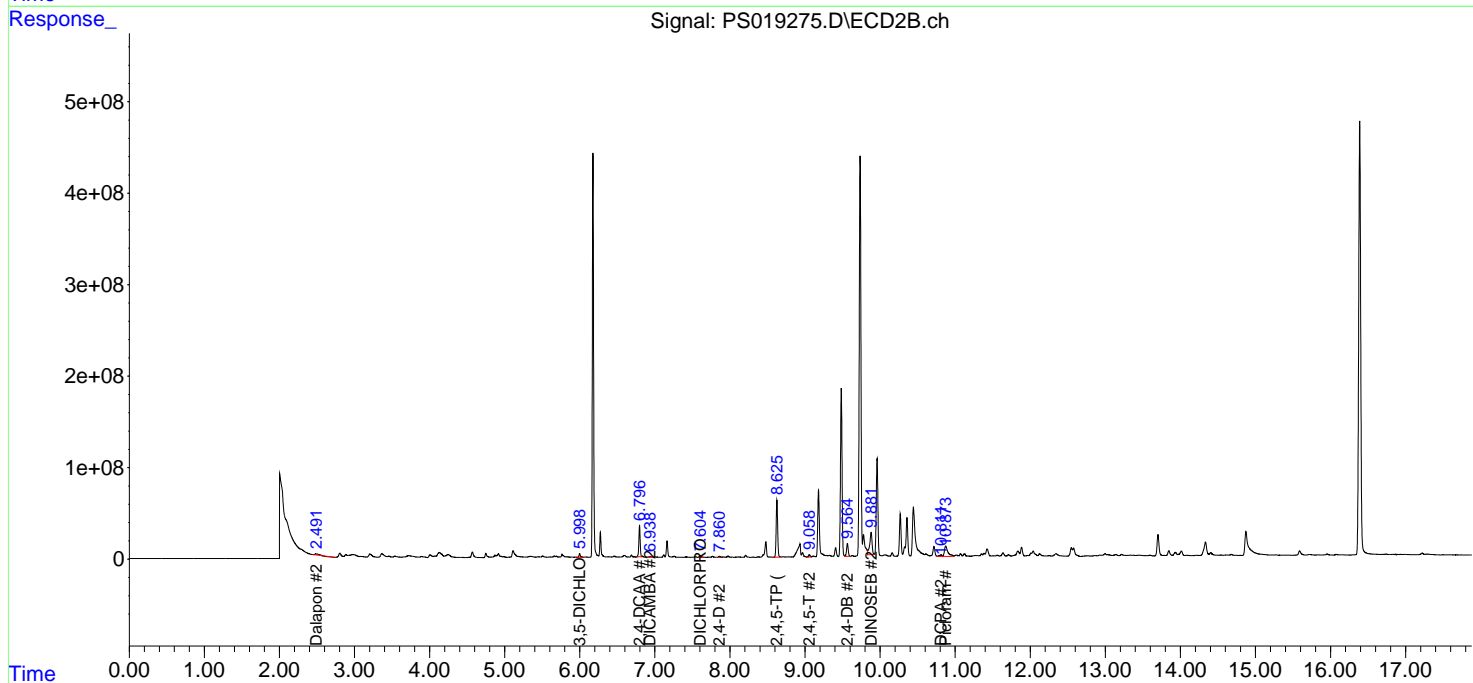
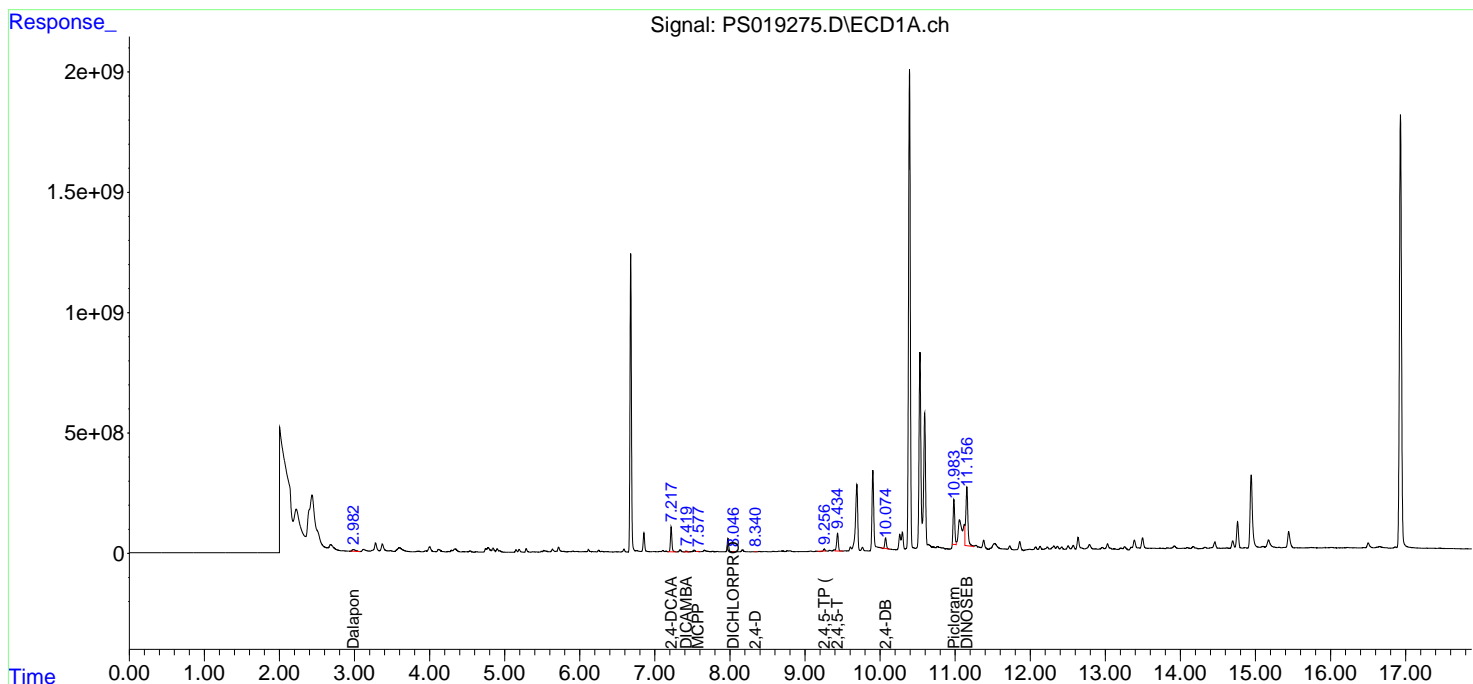
(f)=RT Delta > 1/2 Window (#)=Amounts differ by > 25% (m)=manual int.

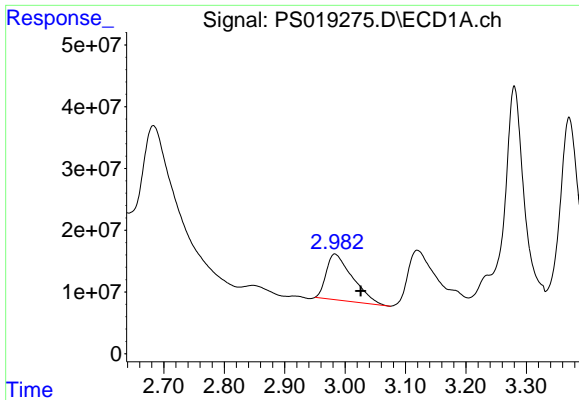
Data Path : Z:\pestpcbsrv\HPCHEM1\ECD_S\Data\PS050422\
 Data File : PS019275.D
 Signal(s) : Signal #1: ECD1A.ch Signal #2: ECD2B.ch
 Acq On : 04 May 2022 20:10
 Operator : AJ\MA
 Sample : N2559-01
 Misc :
 ALS Vial : 17 Sample Multiplier: 1

Instrument :
 ECD_S
 ClientSampleId :

Integration File signal 1: autoint1.e
 Integration File signal 2: autoint2.e
 Quant Time: May 05 01:05:54 2022
 Quant Method : Z:\pestpcbsrv\HPCHEM1\ECD_S\Method\PS050422.M
 Quant Title : 8080.M
 QLast Update : Wed May 04 16:27:11 2022
 Response via : Initial Calibration
 Integrator: ChemStation

Volume Inj. : 2 µl
 Signal #1 Phase : Rtx-CLPesticides Signal #2 Phase: Rtx-CLPesticides2
 Signal #1 Info : 30M x 0.32mm x0.5 Signal #2 Info : 30M x 0.32mm x 0.25µm

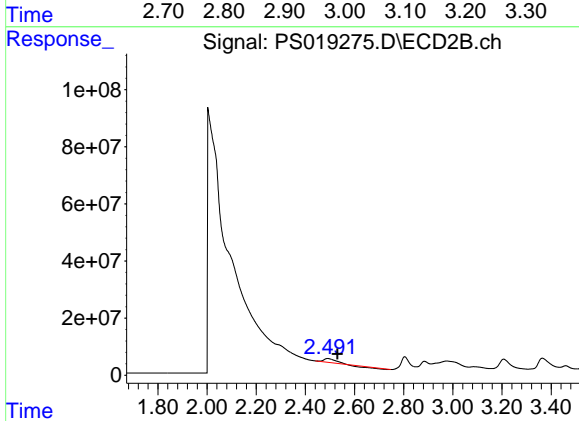




#1 Dalapon

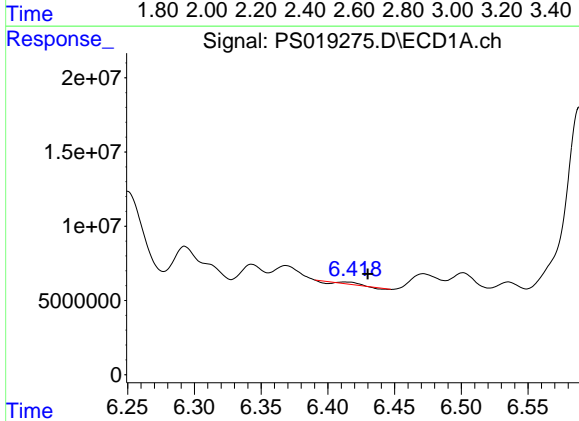
R.T.: 2.983 min
 Delta R.T.: -0.043 min
 Response: 223273794
 Conc: 46.25 ng/ml

Instrument :
 ECD_S
 ClientSampleId :



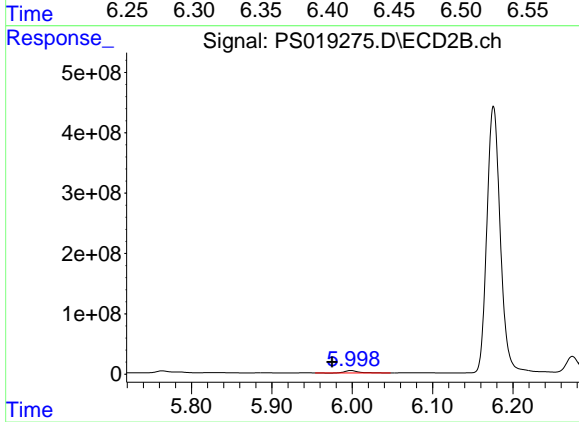
#1 Dalapon

R.T.: 2.490 min
 Delta R.T.: -0.040 min
 Response: 26205887
 Conc: 29.48 ng/ml



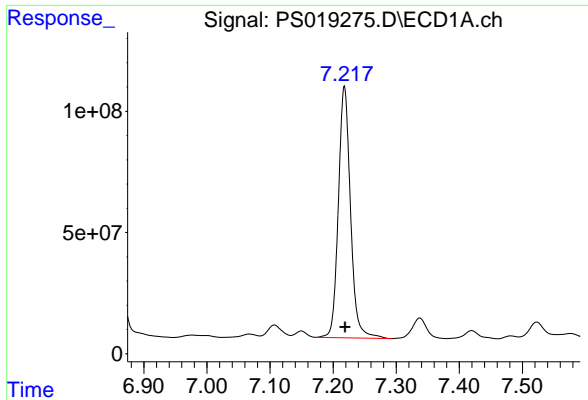
#2 3,5-DICHLOROBENZOIC ACID

R.T.: 6.413 min
 Delta R.T.: -0.017 min
 Response: 207921
 Conc: N.D.



#2 3,5-DICHLOROBENZOIC ACID

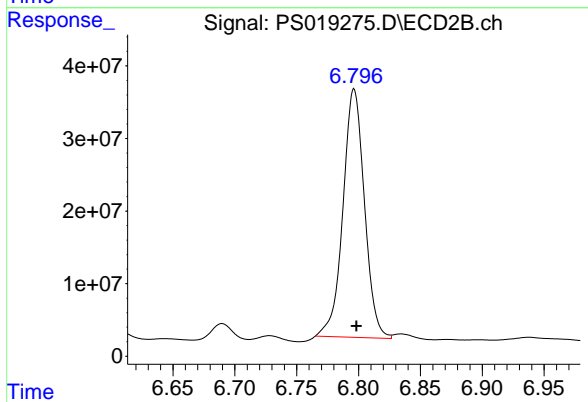
R.T.: 5.998 min
 Delta R.T.: 0.023 min
 Response: 44545934
 Conc: 38.20 ng/ml



#4 2,4-DCAA

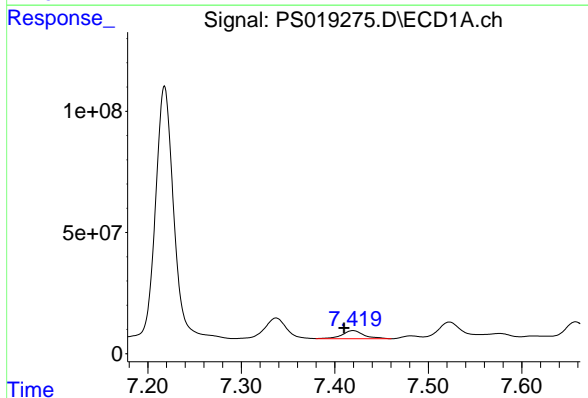
R.T.: 7.218 min
 Delta R.T.: 0.000 min
 Response: 1387888948
 Conc: 508.22 ng/ml

Instrument :
 ECD_S
 ClientSampleId :



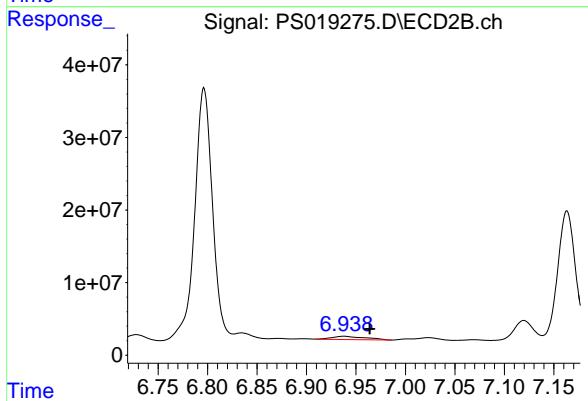
#4 2,4-DCAA

R.T.: 6.796 min
 Delta R.T.: -0.002 min
 Response: 413407197
 Conc: 533.73 ng/ml



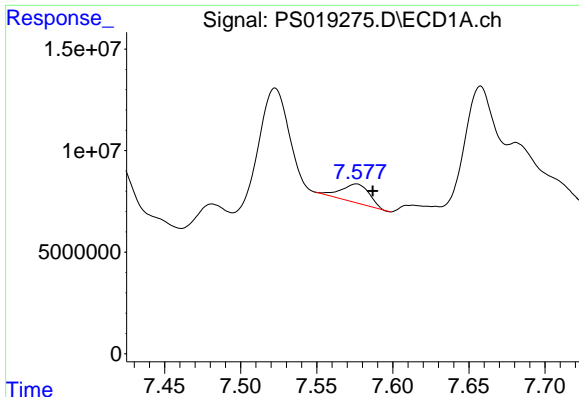
#5 DICAMBA

R.T.: 7.419 min
 Delta R.T.: 0.009 min
 Response: 53860879
 Conc: 4.88 ng/ml



#5 DICAMBA

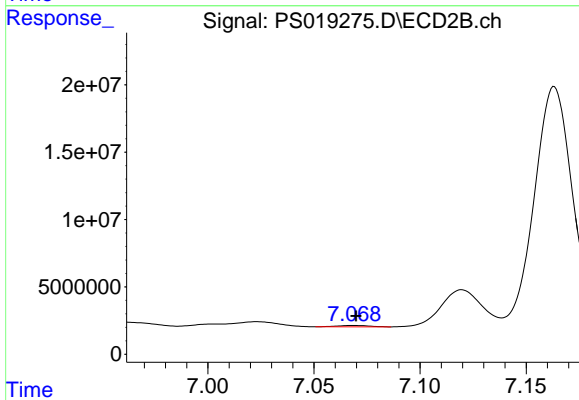
R.T.: 6.938 min
 Delta R.T.: -0.026 min
 Response: 10812611
 Conc: 3.23 ng/ml



#6 MCPP

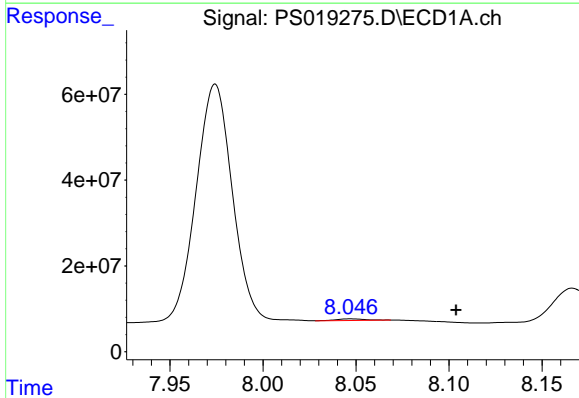
R.T.: 7.576 min
 Delta R.T.: -0.011 min
 Response: 11847807
 Conc: 1.33 ug/ml

Instrument :
 ECD_S
 ClientSampleId :



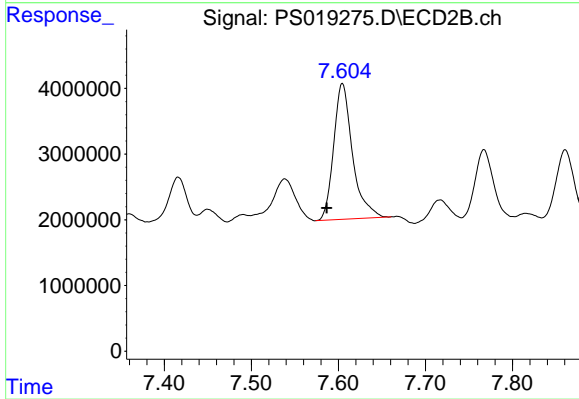
#6 MCPP

R.T.: 7.068 min
 Delta R.T.: -0.001 min
 Response: 1056536
 Conc: N.D.



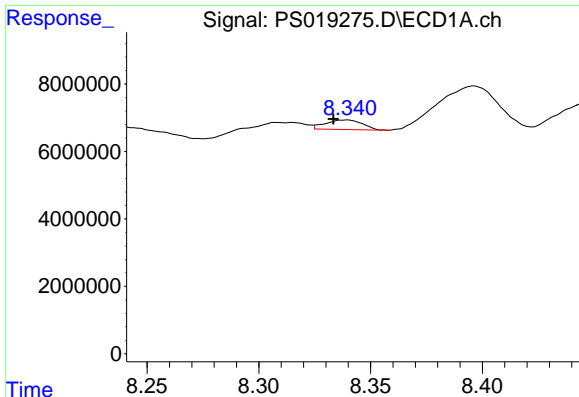
#8 DICHLORPROP

R.T.: 8.047 min
 Delta R.T.: -0.056 min
 Response: 3406953
 Conc: 1.22 ng/ml



#8 DICHLORPROP

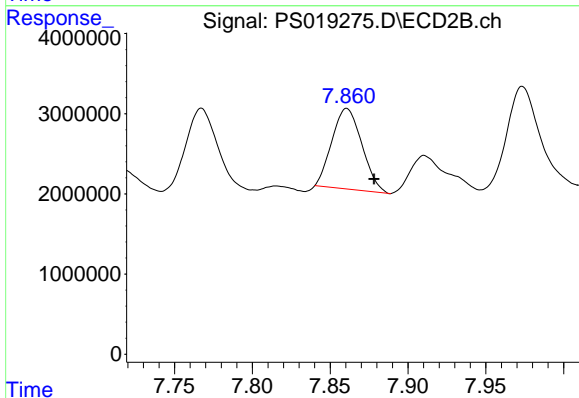
R.T.: 7.605 min
 Delta R.T.: 0.018 min
 Response: 31051541
 Conc: 36.23 ng/ml



#9 2,4-D

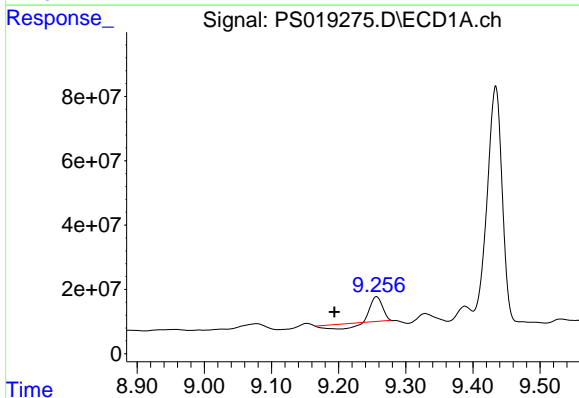
R.T.: 8.339 min
 Delta R.T.: 0.005 min
 Response: 3267712
 Conc: 1.04 ng/ml

Instrument :
 ECD_S
 ClientSampleId :



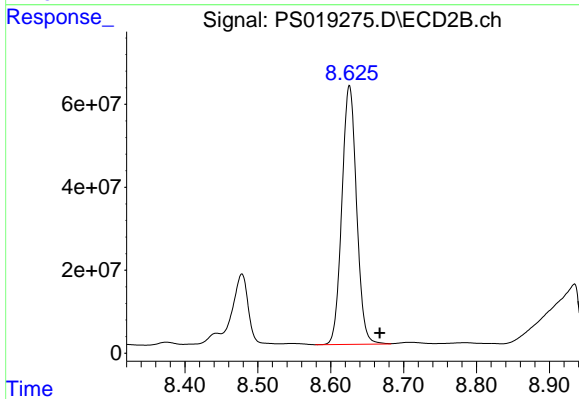
#9 2,4-D

R.T.: 7.861 min
 Delta R.T.: -0.018 min
 Response: 13470574
 Conc: 13.49 ng/ml



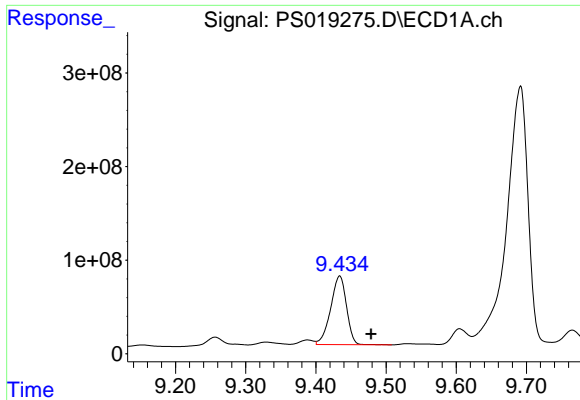
#11 2,4,5-TP (SILVEX)

R.T.: 9.256 min
 Delta R.T.: 0.063 min
 Response: 60822583
 Conc: 3.36 ng/ml



#11 2,4,5-TP (SILVEX)

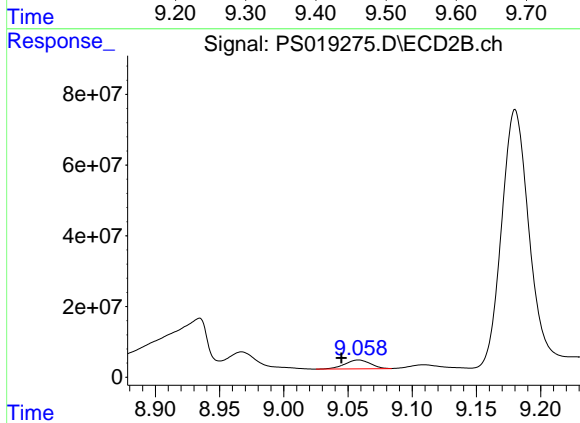
R.T.: 8.626 min
 Delta R.T.: -0.041 min
 Response: 873999180
 Conc: 181.61 ng/ml



#12 2,4,5-T

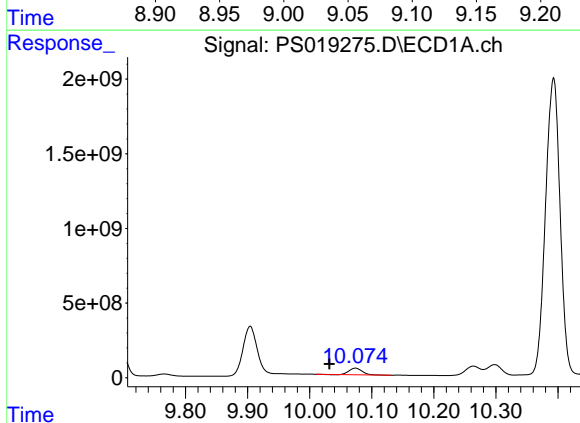
R.T.: 9.434 min
 Delta R.T.: -0.045 min
 Response: 1149060923
 Conc: 54.33 ng/ml

Instrument :
 ECD_S
 ClientSampleId :



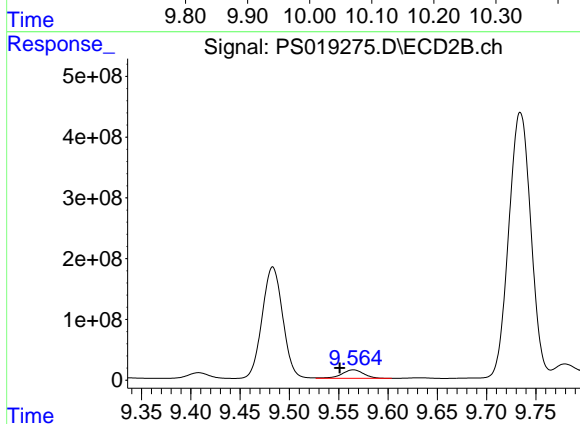
#12 2,4,5-T

R.T.: 9.058 min
 Delta R.T.: 0.013 min
 Response: 34570049
 Conc: 7.98 ng/ml



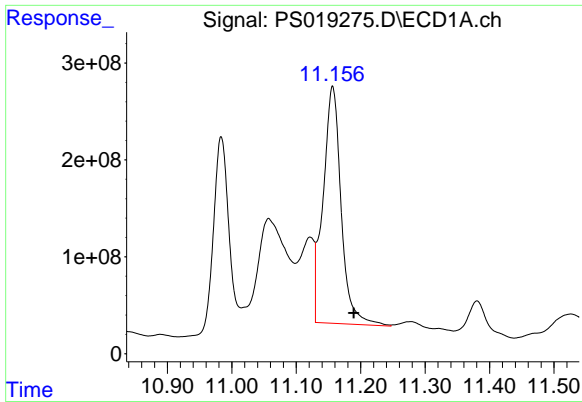
#13 2,4-DB

R.T.: 10.074 min
 Delta R.T.: 0.042 min
 Response: 633101176
 Conc: 147.64 ng/ml



#13 2,4-DB

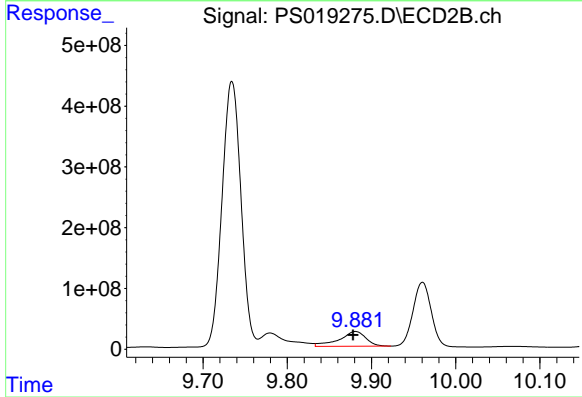
R.T.: 9.565 min
 Delta R.T.: 0.014 min
 Response: 216734384
 Conc: 381.20 ng/ml



#14 DINOSEB

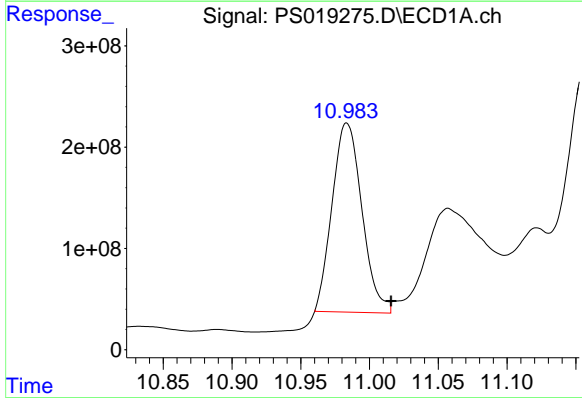
R.T.: 11.156 min
 Delta R.T.: -0.033 min
 Response: 4777551491
 Conc: 289.35 ng/ml

Instrument :
 ECD_S
 ClientSampleId :



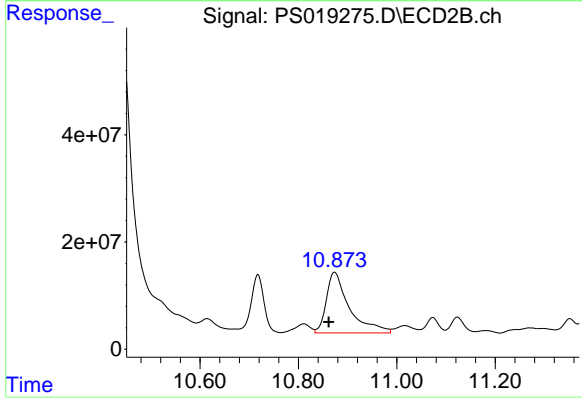
#14 DINOSEB

R.T.: 9.881 min
 Delta R.T.: 0.003 min
 Response: 533981355
 Conc: 184.27 ng/ml



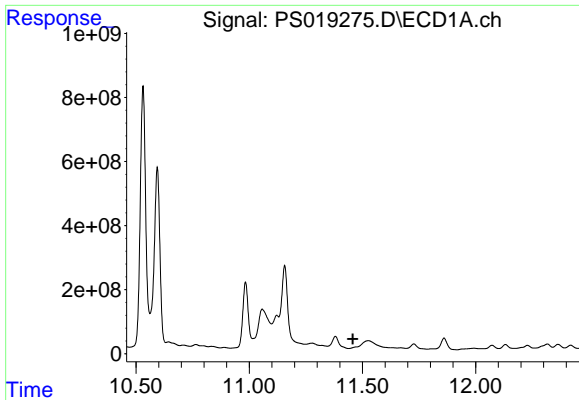
#15 Picloram

R.T.: 10.984 min
 Delta R.T.: -0.032 min
 Response: 2814452739
 Conc: 96.29 ng/ml



#15 Picloram

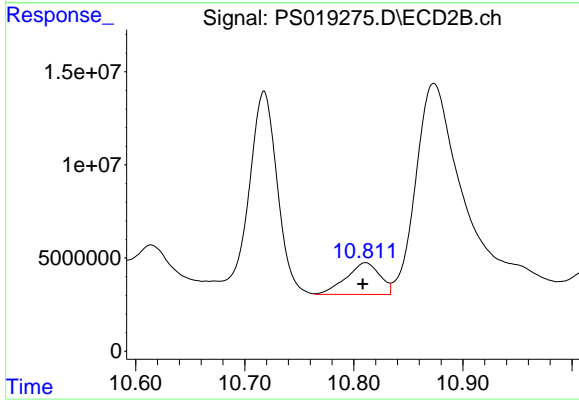
R.T.: 10.873 min
 Delta R.T.: 0.012 min
 Response: 366709429
 Conc: 61.31 ng/ml



#16 DCPA

R.T.: 11.526 min
 Delta R.T.: 0.068 min
 Response: -226787347
 Conc: N.D.

Instrument :
 ECD_S
 ClientSampleId :



#16 DCPA

R.T.: 10.811 min
 Delta R.T.: 0.003 min
 Response: 36386672
 Conc: 6.20 ng/ml