

Data Path : Z:\pestpcbsrv\HPCHEM1\ECD_S\Data\PS050422\
 Data File : PS019293.D
 Signal(s) : Signal #1: ECD1A.ch Signal #2: ECD2B.ch
 Acq On : 05 May 2022 04:07
 Operator : AJ\MA
 Sample : PB144506BL
 Misc :
 ALS Vial : 31 Sample Multiplier: 1

Instrument :
 ECD_S
 ClientSampleId :

Integration File signal 1: autoint1.e
 Integration File signal 2: autoint2.e
 Quant Time: May 05 05:06:19 2022
 Quant Method : Z:\pestpcbsrv\HPCHEM1\ECD_S\Method\PS050422.M
 Quant Title : 8080.M
 QLast Update : Wed May 04 16:27:11 2022
 Response via : Initial Calibration
 Integrator: ChemStation

Volume Inj. : 2 µl
 Signal #1 Phase : Rtx-CLPesticides Signal #2 Phase: Rtx-CLPesticides2
 Signal #1 Info : 30M x 0.32mm x0.5 Signal #2 Info : 30M x 0.32mm x 0.25µm

	Compound	RT#1	RT#2	Resp#1	Resp#2	ng/ml	ng/ml

System Monitoring Compounds							
4) S	2,4-DCAA	7.219	6.797	1257.4E6	376.8E6	460.437	486.518
Target Compounds							
1) T	Dalapon	2.983f	2.494	217.3E6	82461368	45.020	92.766 #
2) T	3,5-DICHL...	6.462	5.999	1097226	22410039	<MDL	19.216 #
5) T	DICAMBA	7.404	6.956	5121290	4272323	<MDL	1.275 #
6) T	MCPD	7.576	7.068	10123919	1013819	1.133	<MDL #
7) T	MCPA	7.720	7.259	4296105	13465834	<MDL	3.615 #
8) T	DICHLORPROP	8.094	7.609	4637982	10840736	1.658	12.650 #
9) T	2,4-D	8.397f	7.861	-7852348	6527130	N.D.	6.536
10) T	Pentachlo...	8.640	8.307	91249	2299049	<MDL	<MDL #
11) T	2,4,5-TP ...	9.200	8.703	-494021	20760981	N.D.	4.314
12) T	2,4,5-T	9.496	9.050	15415850	6643025	<MDL	1.534 #
13) T	2,4-DB	10.071	9.562	78955679	15568328	18.412	27.382 #
14) T	DINOSEB	11.157	9.882	480.0E6	39296636	29.069	13.560 #
15) T	Picloram	11.066f	10.884	168.7E6	43011554	5.772	7.192
16) T	DCPA	11.478	10.809	-55977683	17641055	N.D.	3.005

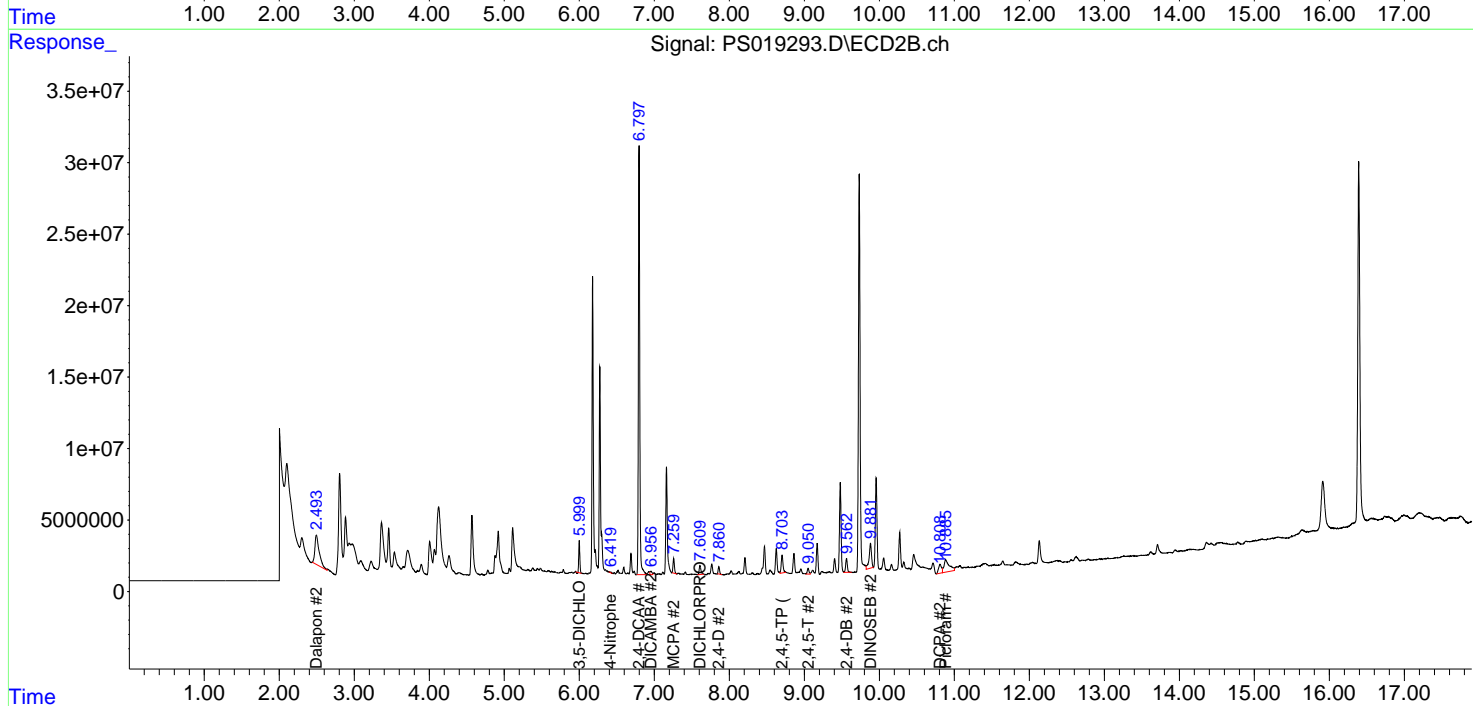
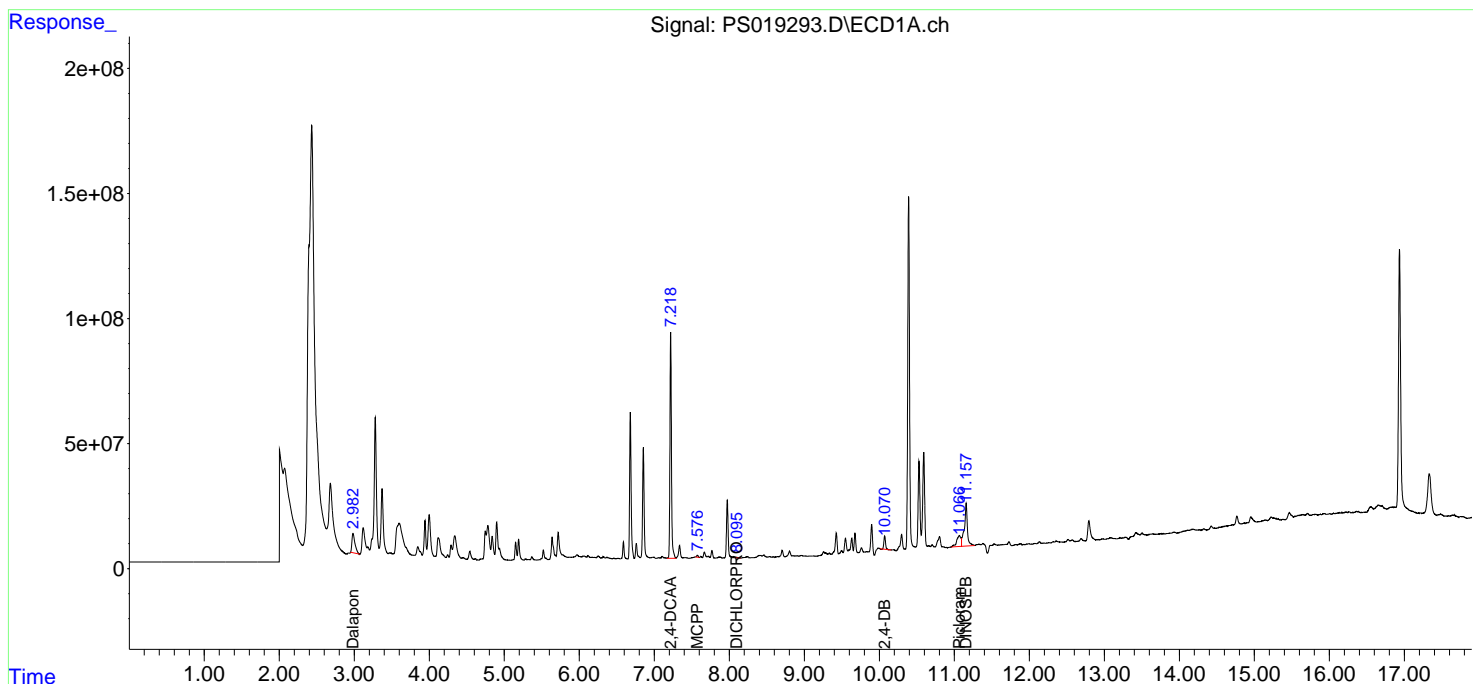
(f)=RT Delta > 1/2 Window (#)=Amounts differ by > 25% (m)=manual int.

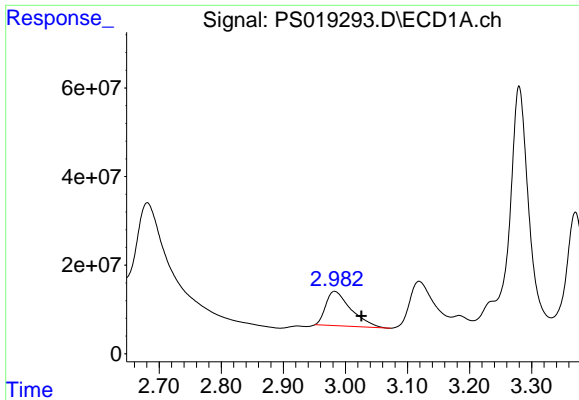
Data Path : Z:\pestpcbsrv\HPCHEM1\ECD_S\Data\PS050422\
 Data File : PS019293.D
 Signal(s) : Signal #1: ECD1A.ch Signal #2: ECD2B.ch
 Acq On : 05 May 2022 04:07
 Operator : AJ\MA
 Sample : PB144506BL
 Misc :
 ALS Vial : 31 Sample Multiplier: 1

Instrument :
 ECD_S
 ClientSampleId :

Integration File signal 1: autoint1.e
 Integration File signal 2: autoint2.e
 Quant Time: May 05 05:06:19 2022
 Quant Method : Z:\pestpcbsrv\HPCHEM1\ECD_S\Method\PS050422.M
 Quant Title : 8080.M
 QLast Update : Wed May 04 16:27:11 2022
 Response via : Initial Calibration
 Integrator: ChemStation

Volume Inj. : 2 µl
 Signal #1 Phase : Rtx-CLPesticides Signal #2 Phase: Rtx-CLPesticides2
 Signal #1 Info : 30M x 0.32mm x0.5 Signal #2 Info : 30M x 0.32mm x 0.25µm

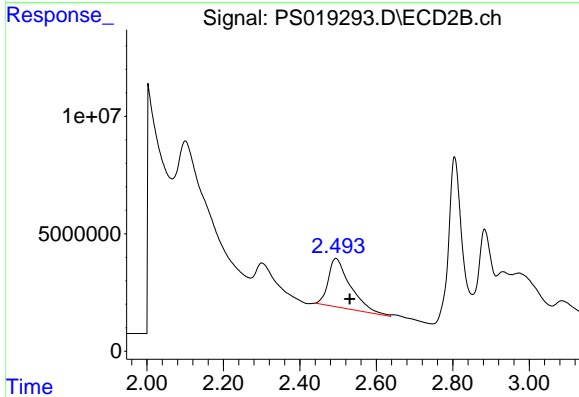




#1 Dalapon

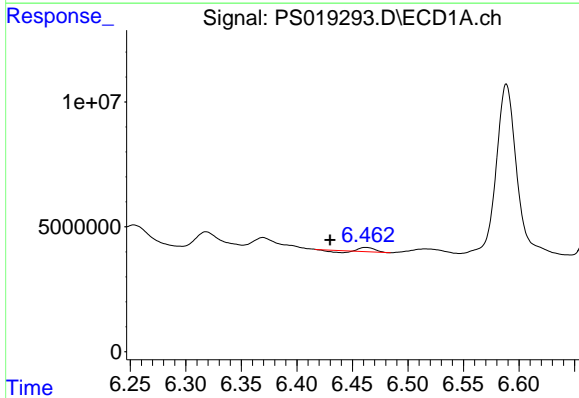
R.T.: 2.983 min
 Delta R.T.: -0.043 min
 Response: 217341789
 Conc: 45.02 ng/ml

Instrument :
 ECD_S
 ClientSampleId :



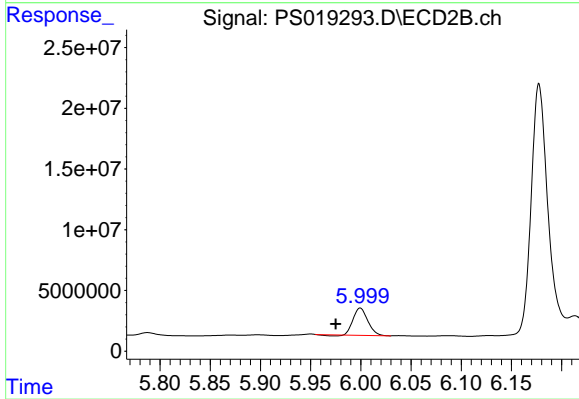
#1 Dalapon

R.T.: 2.494 min
 Delta R.T.: -0.036 min
 Response: 82461368
 Conc: 92.77 ng/ml



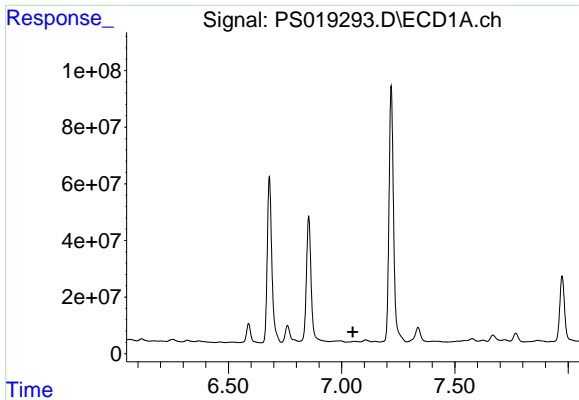
#2 3,5-DICHLOROBENZOIC ACID

R.T.: 6.462 min
 Delta R.T.: 0.033 min
 Response: 1097226
 Conc: N.D.



#2 3,5-DICHLOROBENZOIC ACID

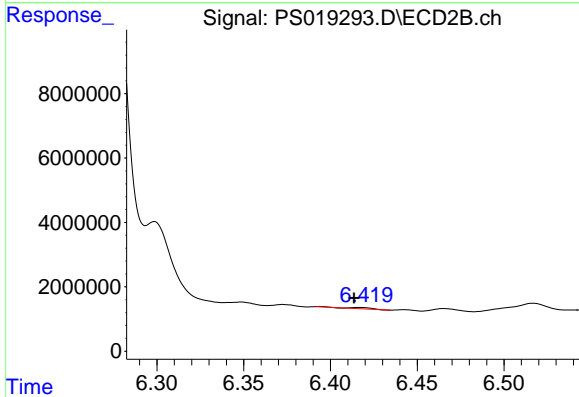
R.T.: 5.999 min
 Delta R.T.: 0.024 min
 Response: 22410039
 Conc: 19.22 ng/ml



#3 4-Nitrophenol

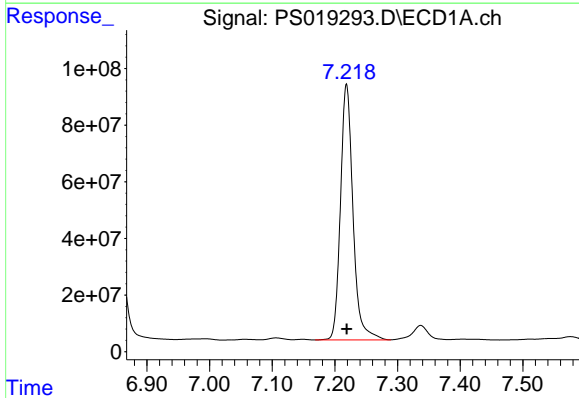
R.T.: 7.056 min
 Delta R.T.: 0.007 min
 Response: -1996553
 Conc: N.D.

Instrument :
 ECD_S
 ClientSampleId :



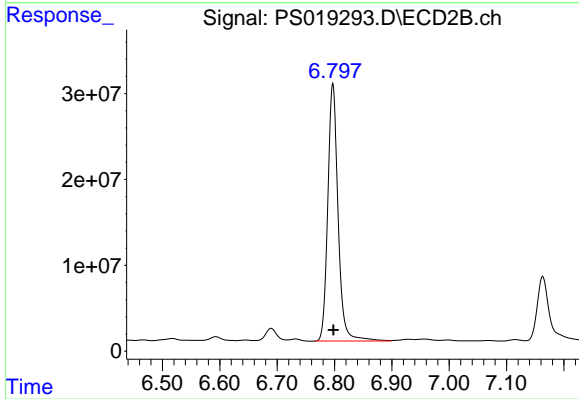
#3 4-Nitrophenol

R.T.: 6.416 min
 Delta R.T.: 0.003 min
 Response: 353500
 Conc: 1.00 ng/ml



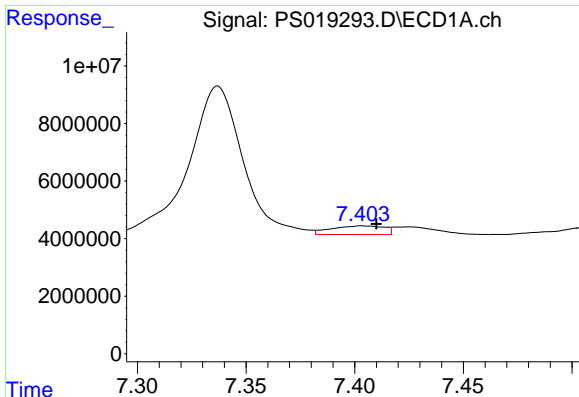
#4 2,4-DCAA

R.T.: 7.219 min
 Delta R.T.: 0.000 min
 Response: 1257396991
 Conc: 460.44 ng/ml



#4 2,4-DCAA

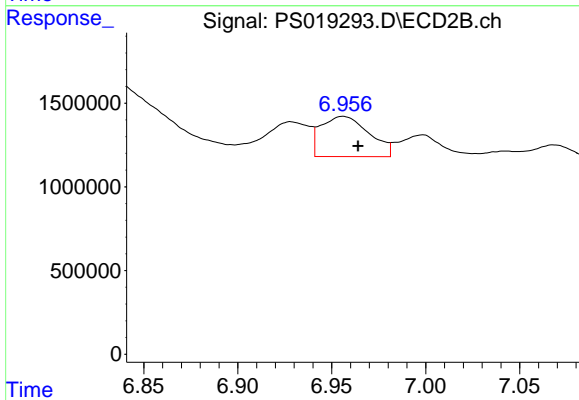
R.T.: 6.797 min
 Delta R.T.: -0.001 min
 Response: 376835433
 Conc: 486.52 ng/ml



#5 DICAMBA

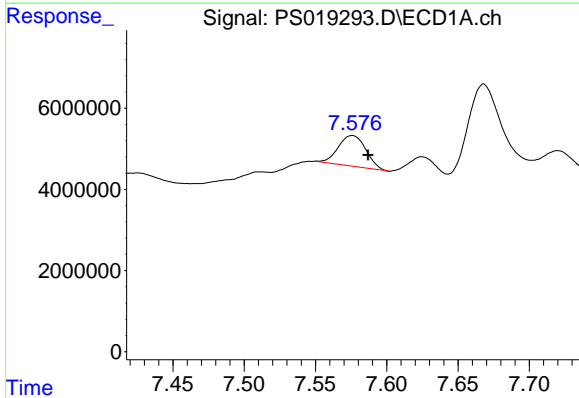
R.T.: 7.404 min
 Delta R.T.: -0.006 min
 Response: 5121290
 Conc: N.D.

Instrument :
 ECD_S
 ClientSampleId :



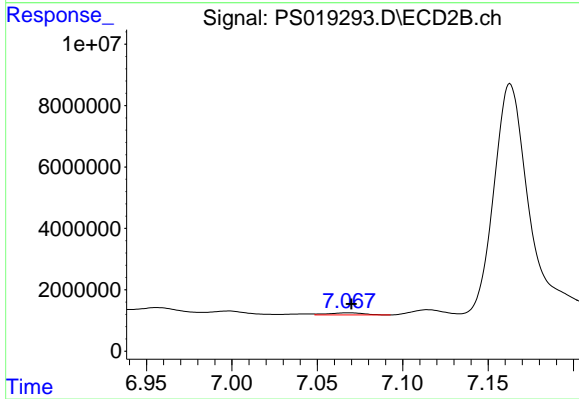
#5 DICAMBA

R.T.: 6.956 min
 Delta R.T.: -0.008 min
 Response: 4272323
 Conc: 1.28 ng/ml



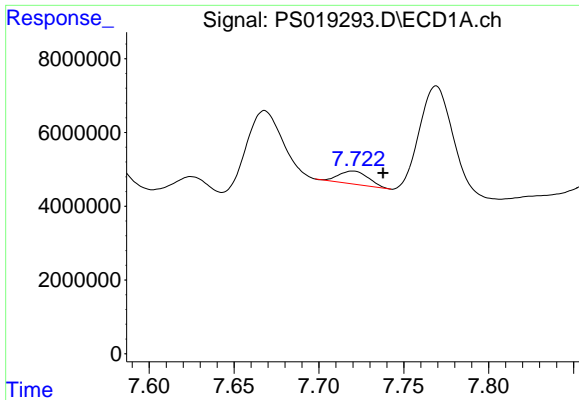
#6 MCP

R.T.: 7.576 min
 Delta R.T.: -0.011 min
 Response: 10123919
 Conc: 1.13 ug/ml



#6 MCP

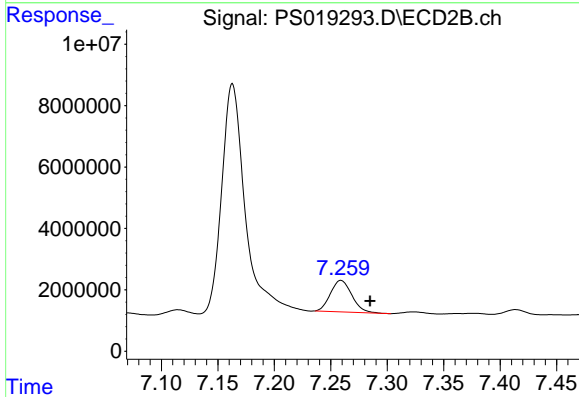
R.T.: 7.068 min
 Delta R.T.: -0.002 min
 Response: 1013819
 Conc: N.D.



#7 MCPA

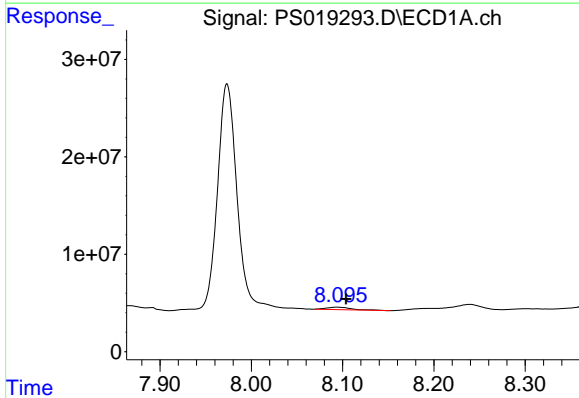
R.T.: 7.720 min
 Delta R.T.: -0.018 min
 Response: 4296105
 Conc: N.D.

Instrument :
 ECD_S
 ClientSampleId :



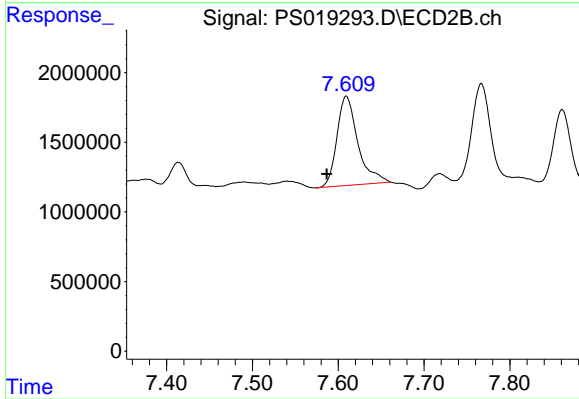
#7 MCPA

R.T.: 7.259 min
 Delta R.T.: -0.026 min
 Response: 13465834
 Conc: 3.62 ug/ml



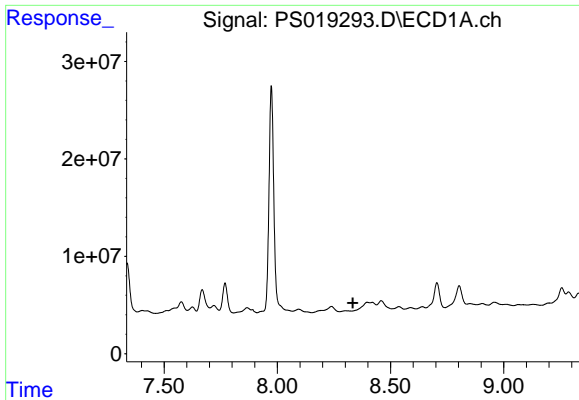
#8 DICHLORPROP

R.T.: 8.094 min
 Delta R.T.: -0.010 min
 Response: 4637982
 Conc: 1.66 ng/ml



#8 DICHLORPROP

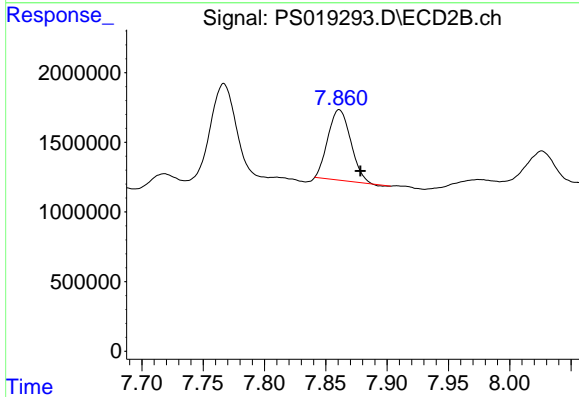
R.T.: 7.609 min
 Delta R.T.: 0.023 min
 Response: 10840736
 Conc: 12.65 ng/ml



#9 2,4-D

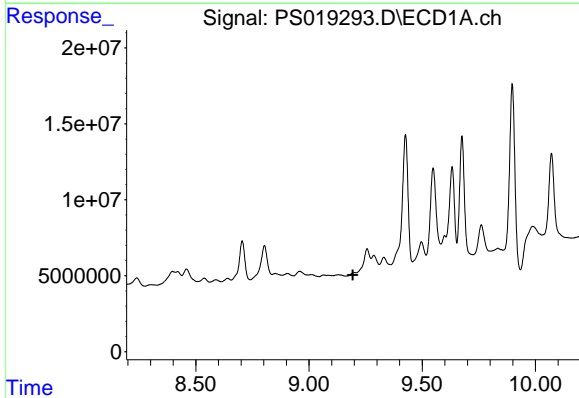
R.T.: 8.397 min
 Delta R.T.: 0.064 min
 Response: -7852348
 Conc: N.D.

Instrument :
 ECD_S
 ClientSampleId :



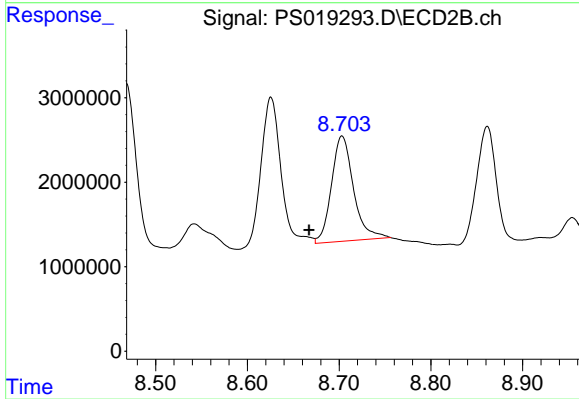
#9 2,4-D

R.T.: 7.861 min
 Delta R.T.: -0.017 min
 Response: 6527130
 Conc: 6.54 ng/ml



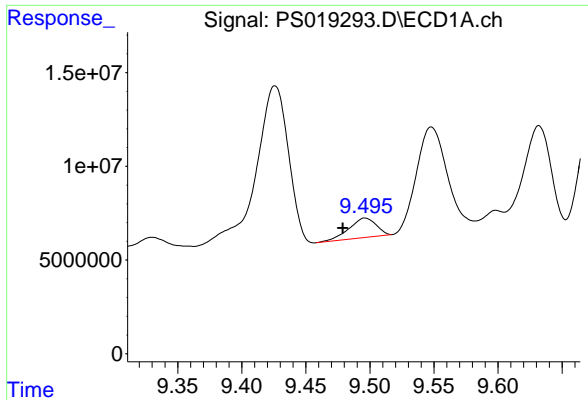
#11 2,4,5-TP (SILVEX)

R.T.: 9.200 min
 Delta R.T.: 0.006 min
 Response: -494021
 Conc: N.D.



#11 2,4,5-TP (SILVEX)

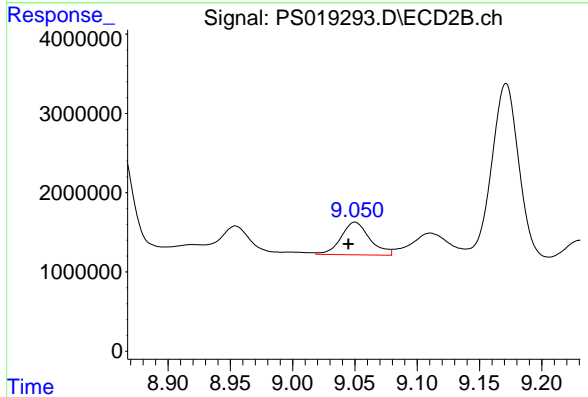
R.T.: 8.703 min
 Delta R.T.: 0.036 min
 Response: 20760981
 Conc: 4.31 ng/ml



#12 2,4,5-T

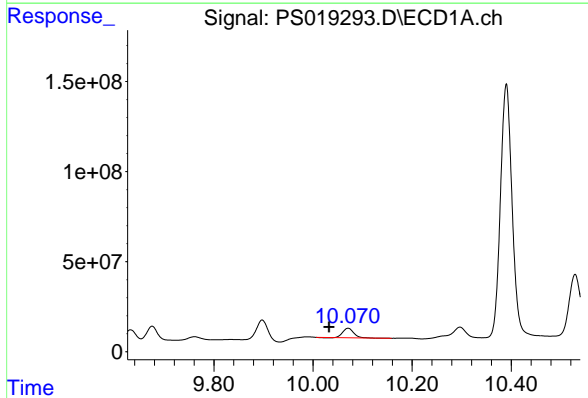
R.T.: 9.496 min
 Delta R.T.: 0.018 min
 Response: 15415850
 Conc: N.D.

Instrument :
 ECD_S
 ClientSampleId :



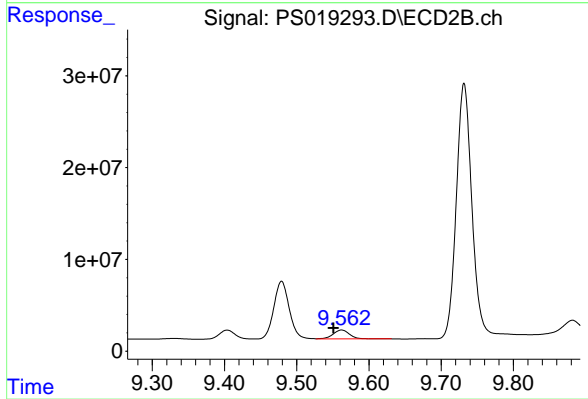
#12 2,4,5-T

R.T.: 9.050 min
 Delta R.T.: 0.005 min
 Response: 6643025
 Conc: 1.53 ng/ml



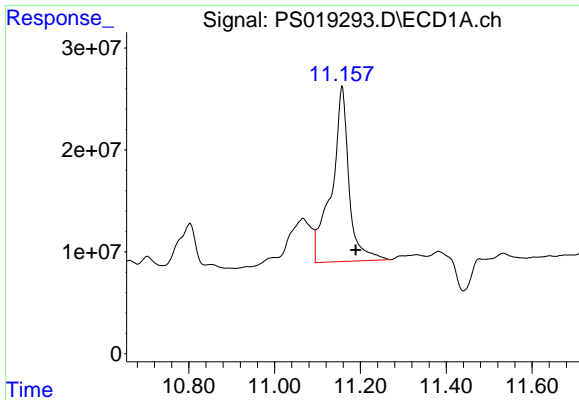
#13 2,4-DB

R.T.: 10.071 min
 Delta R.T.: 0.039 min
 Response: 78955679
 Conc: 18.41 ng/ml



#13 2,4-DB

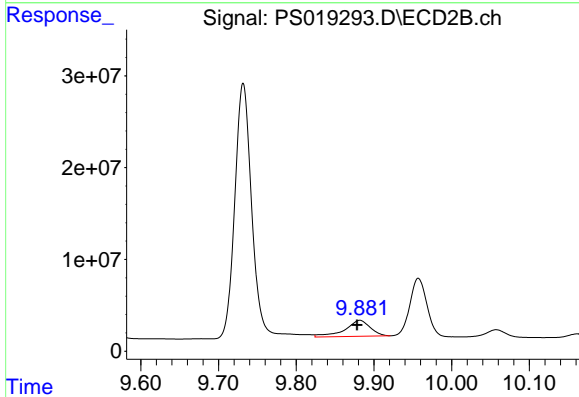
R.T.: 9.562 min
 Delta R.T.: 0.011 min
 Response: 15568328
 Conc: 27.38 ng/ml



#14 DINOSEB

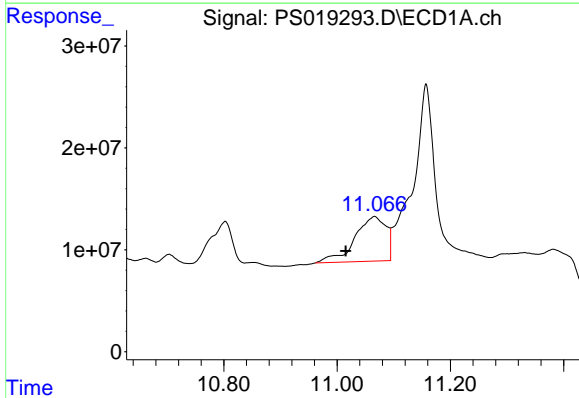
R.T.: 11.157 min
 Delta R.T.: -0.032 min
 Response: 479973432
 Conc: 29.07 ng/ml

Instrument :
 ECD_S
 ClientSampleId :



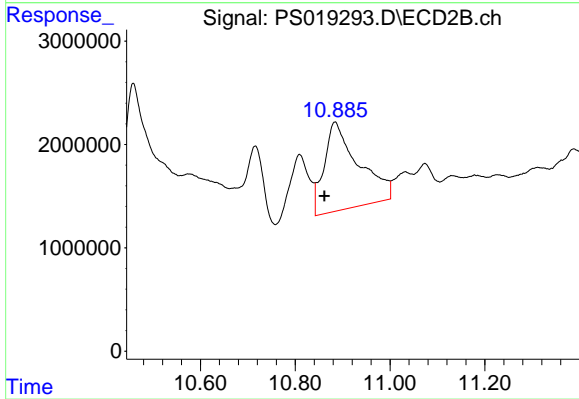
#14 DINOSEB

R.T.: 9.882 min
 Delta R.T.: 0.004 min
 Response: 39296636
 Conc: 13.56 ng/ml



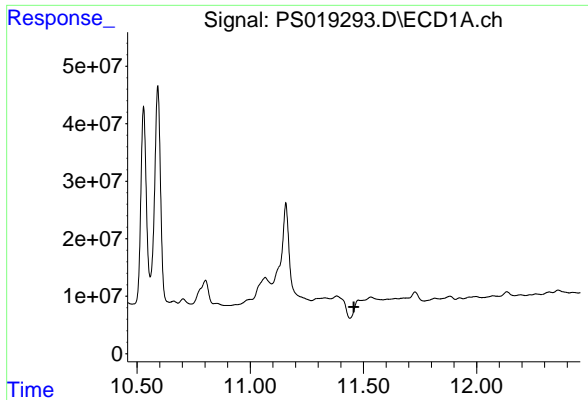
#15 Picloram

R.T.: 11.066 min
 Delta R.T.: 0.050 min
 Response: 168702175
 Conc: 5.77 ng/ml



#15 Picloram

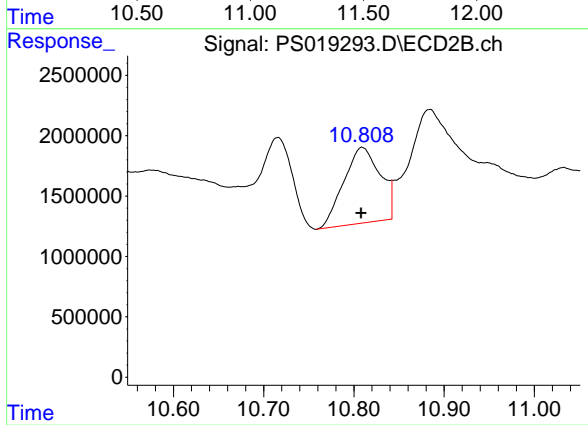
R.T.: 10.884 min
 Delta R.T.: 0.022 min
 Response: 43011554
 Conc: 7.19 ng/ml



#16 DCPA

R.T.: 11.478 min
Delta R.T.: 0.020 min
Response: -55977683
Conc: N.D.

Instrument :
ECD_S
ClientSampleId :



#16 DCPA

R.T.: 10.809 min
Delta R.T.: 0.001 min
Response: 17641055
Conc: 3.01 ng/ml