

Data Path : Z:\pestpcbsrv\HPCHEM1\ECD\_S\Data\PS050422\  
 Data File : PS019300.D  
 Signal(s) : Signal #1: ECD1A.ch Signal #2: ECD2B.ch  
 Acq On : 05 May 2022 06:54  
 Operator : AJ\MA  
 Sample : PB144508BS  
 Misc :  
 ALS Vial : 38 Sample Multiplier: 1

Instrument :  
 ECD\_S  
 ClientSampleId :

Integration File signal 1: autoint1.e  
 Integration File signal 2: autoint2.e  
 Quant Time: May 05 07:59:12 2022  
 Quant Method : Z:\pestpcbsrv\HPCHEM1\ECD\_S\Method\PS050422.M  
 Quant Title : 8080.M  
 QLast Update : Wed May 04 16:27:11 2022  
 Response via : Initial Calibration  
 Integrator: ChemStation

Volume Inj. : 2 µl  
 Signal #1 Phase : Rtx-CLPesticides Signal #2 Phase: Rtx-CLPesticides2  
 Signal #1 Info : 30M x 0.32mm x0.5 Signal #2 Info : 30M x 0.32mm x 0.25µm

	Compound	RT#1	RT#2	Resp#1	Resp#2	ng/ml	ng/ml
-----							
System Monitoring Compounds							
4) S	2,4-DCAA	7.219	6.798	1371.4E6	336.8E6	502.193	434.881
Target Compounds							
1) T	Dalapon	3.029	2.534	1884.1E6	347.5E6	390.278	390.960
2) T	3,5-DICHL...	6.431	5.975	1539.2E6	496.5E6	435.458	425.693
3) T	4-Nitroph...	7.055	6.417	466.3E6	148.8E6	481.134	421.678
5) T	DICAMBA	7.409	6.964	4880.4E6	1459.1E6	441.896	435.457
6) T	MCP P	7.577	7.058	376.2E6	111.4E6	42.088	41.903
7) T	MCPA	7.726	7.271	526.7E6	155.0E6	42.262	41.624
8) T	DICHLORPROP	8.104	7.586	1211.4E6	365.0E6	433.017	425.925
9) T	2,4-D	8.336	7.880	1377.0E6	420.9E6	436.495	421.501
10) T	Pentachlo...	8.642	8.306	18597.7E6	5212.5E6	473.386	463.684
11) T	2,4,5-TP ...	9.194	8.668	8067.8E6	2135.8E6	446.349	443.798
12) T	2,4,5-T	9.481	9.047	9247.7E6	1908.6E6	437.222	440.776
13) T	2,4-DB	10.036	9.553	1793.8E6	238.5E6	418.305	419.504
14) T	DINOSEB	11.189	9.878	7233.0E6	1288.1E6	438.062	444.497
15) T	Picloram	11.032	10.872	10762.6E6	2044.2E6	368.203	341.786
16) T	DCPA	11.457	10.808	11890.9E6	2663.6E6	454.356	453.737
-----							

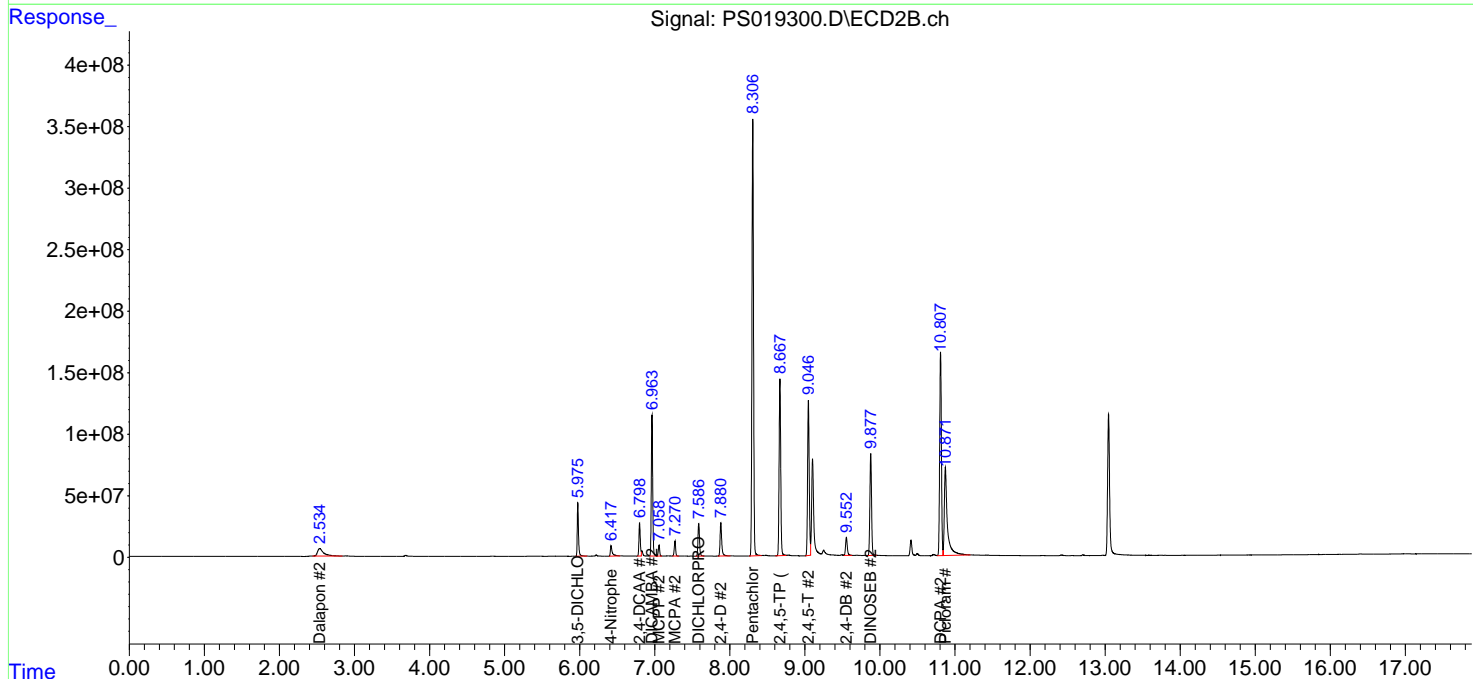
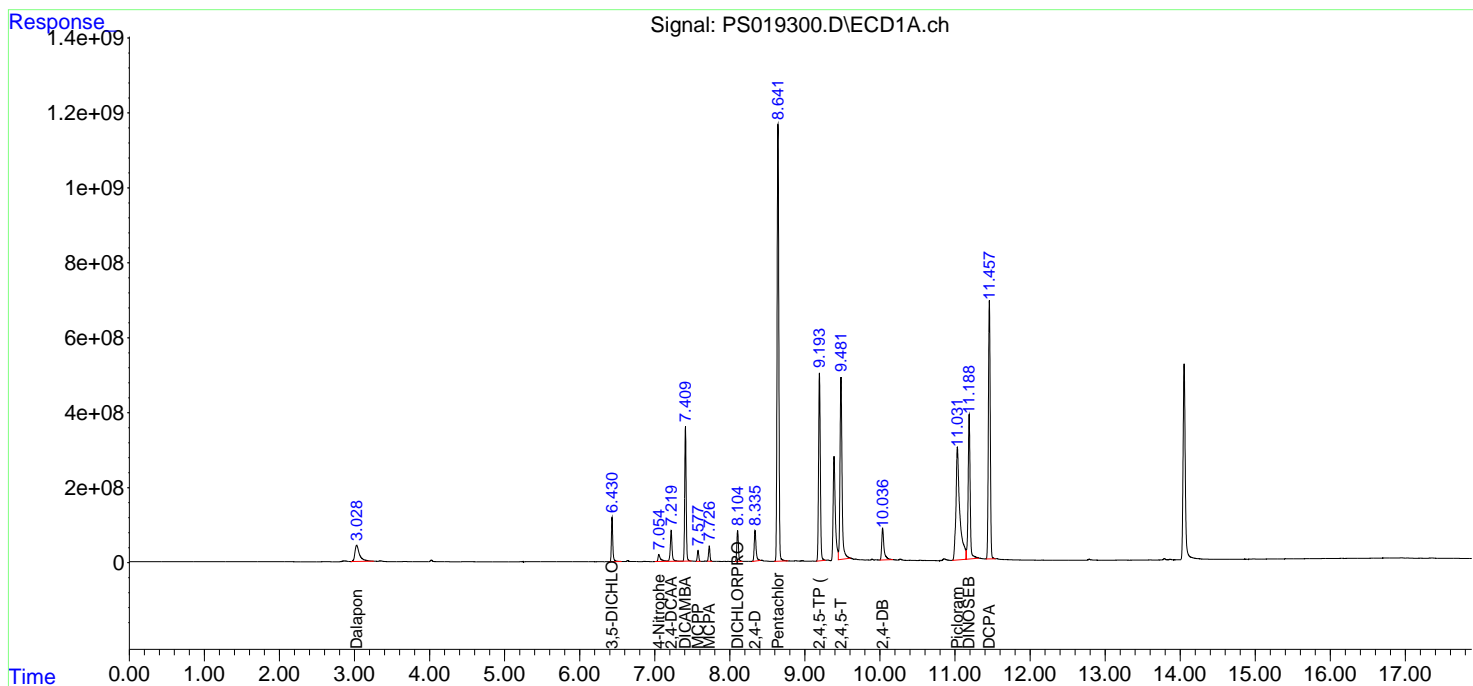
(f)=RT Delta > 1/2 Window (#)=Amounts differ by > 25% (m)=manual int.

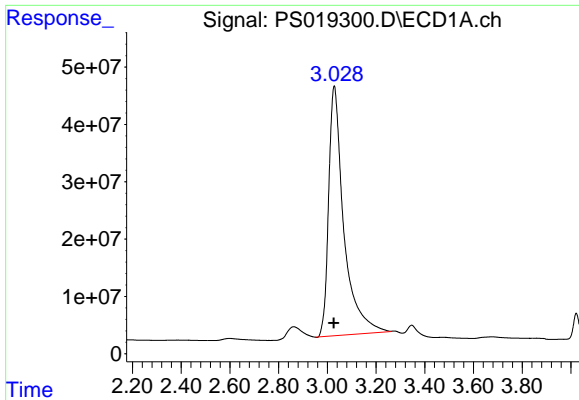
Data Path : Z:\pestpcbsrv\HPCHEM1\ECD\_S\Data\PS050422\  
 Data File : PS019300.D  
 Signal(s) : Signal #1: ECD1A.ch Signal #2: ECD2B.ch  
 Acq On : 05 May 2022 06:54  
 Operator : AJ\MA  
 Sample : PB144508BS  
 Misc :  
 ALS Vial : 38 Sample Multiplier: 1

Instrument :  
 ECD\_S  
 ClientSampleId :

Integration File signal 1: autoint1.e  
 Integration File signal 2: autoint2.e  
 Quant Time: May 05 07:59:12 2022  
 Quant Method : Z:\pestpcbsrv\HPCHEM1\ECD\_S\Method\PS050422.M  
 Quant Title : 8080.M  
 QLast Update : Wed May 04 16:27:11 2022  
 Response via : Initial Calibration  
 Integrator: ChemStation

Volume Inj. : 2 µl  
 Signal #1 Phase : Rtx-CLPesticides Signal #2 Phase: Rtx-CLPesticides2  
 Signal #1 Info : 30M x 0.32mm x 0.5 Signal #2 Info : 30M x 0.32mm x 0.25µm

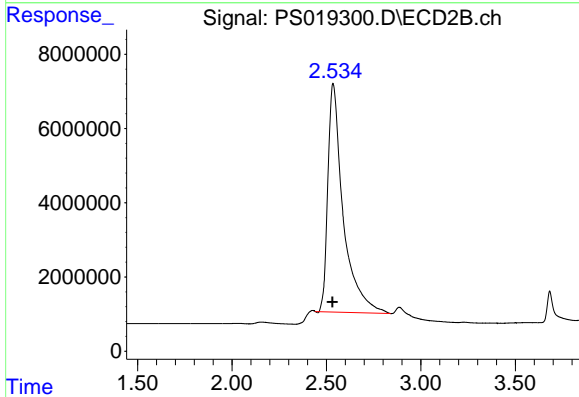




#1 Dalapon

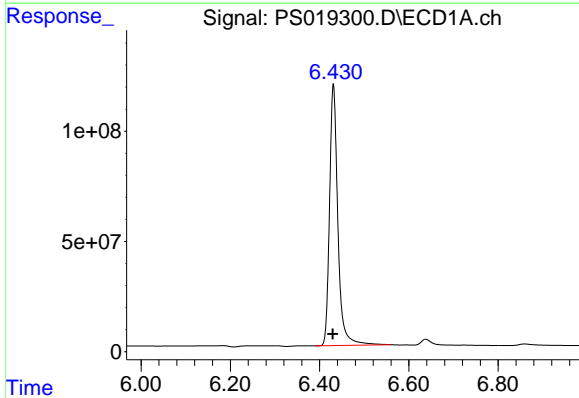
R.T.: 3.029 min  
 Delta R.T.: 0.003 min  
 Response: 1884140872  
 Conc: 390.28 ng/ml

Instrument :  
 ECD\_S  
 ClientSampleId :



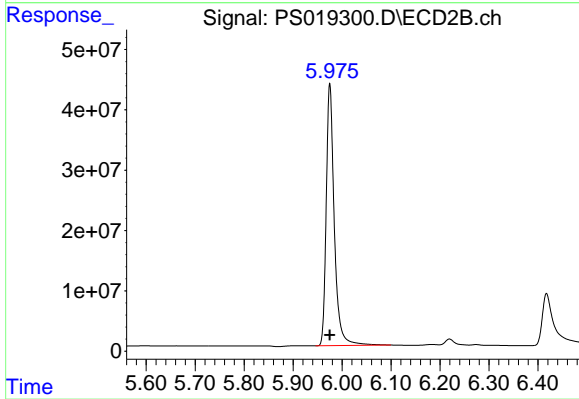
#1 Dalapon

R.T.: 2.534 min  
 Delta R.T.: 0.004 min  
 Response: 347532377  
 Conc: 390.96 ng/ml



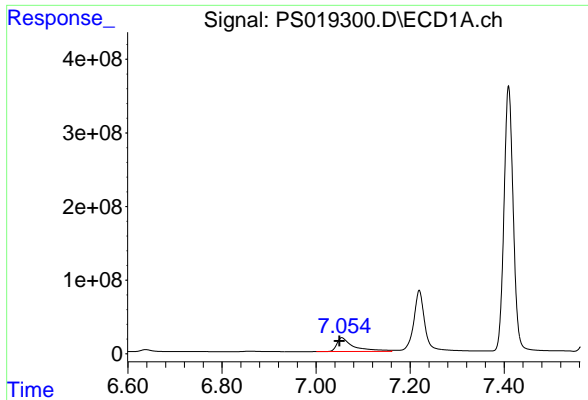
#2 3,5-DICHLOROBENZOIC ACID

R.T.: 6.431 min  
 Delta R.T.: 0.001 min  
 Response: 1539206068  
 Conc: 435.46 ng/ml



#2 3,5-DICHLOROBENZOIC ACID

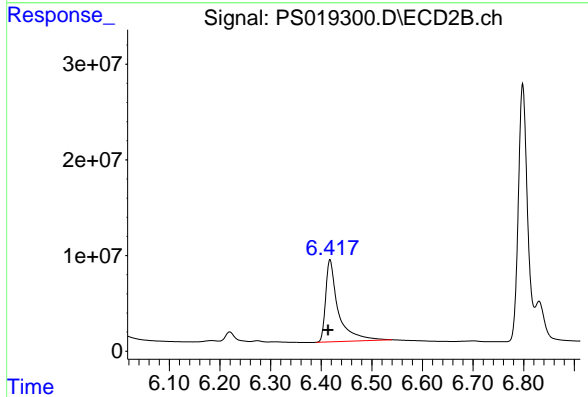
R.T.: 5.975 min  
 Delta R.T.: 0.000 min  
 Response: 496461513  
 Conc: 425.69 ng/ml



#3 4-Nitrophenol

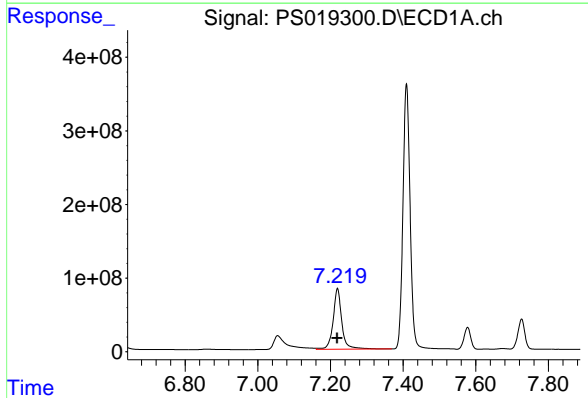
R.T.: 7.055 min  
 Delta R.T.: 0.006 min  
 Response: 466261189  
 Conc: 481.13 ng/ml

Instrument :  
 ECD\_S  
 ClientSampleId :



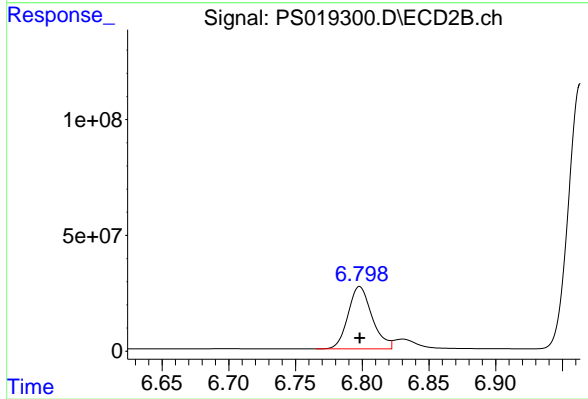
#3 4-Nitrophenol

R.T.: 6.417 min  
 Delta R.T.: 0.004 min  
 Response: 148782029  
 Conc: 421.68 ng/ml



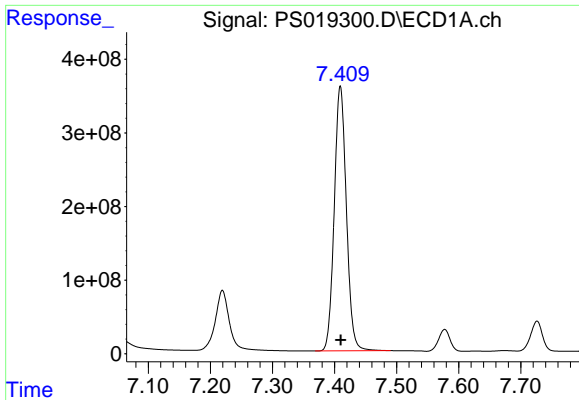
#4 2,4-DCAA

R.T.: 7.219 min  
 Delta R.T.: 0.000 min  
 Response: 1371426944  
 Conc: 502.19 ng/ml



#4 2,4-DCAA

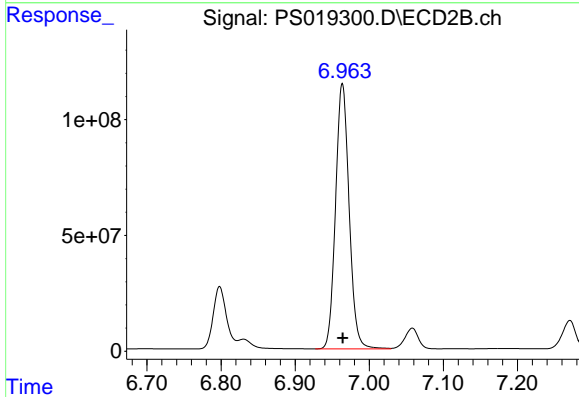
R.T.: 6.798 min  
 Delta R.T.: 0.000 min  
 Response: 336839671  
 Conc: 434.88 ng/ml



#5 DICAMBA

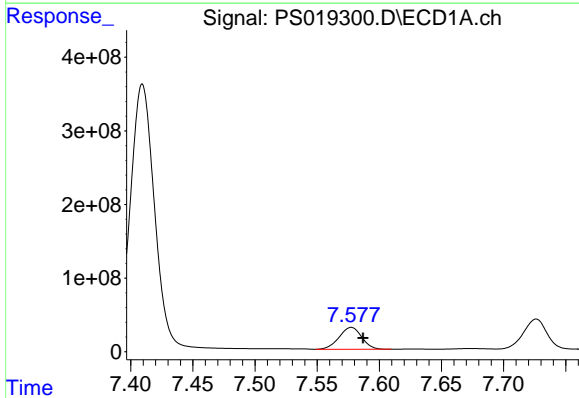
R.T.: 7.409 min  
 Delta R.T.: 0.000 min  
 Response: 4880428709  
 Conc: 441.90 ng/ml

Instrument :  
 ECD\_S  
 ClientSampleId :



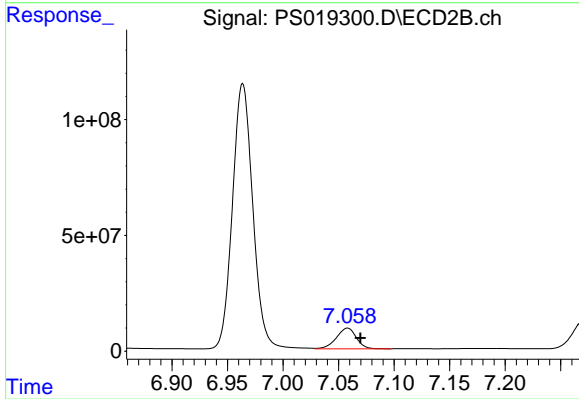
#5 DICAMBA

R.T.: 6.964 min  
 Delta R.T.: 0.000 min  
 Response: 1459137036  
 Conc: 435.46 ng/ml



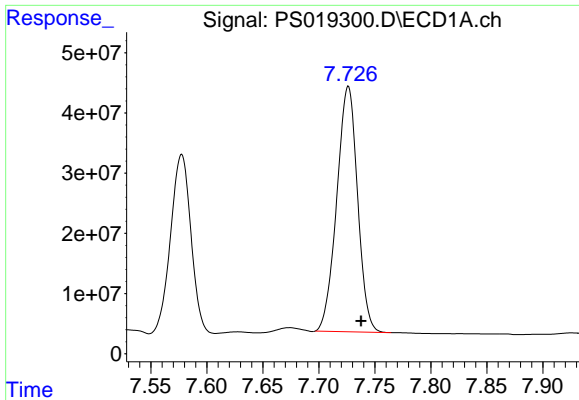
#6 MCP

R.T.: 7.577 min  
 Delta R.T.: -0.009 min  
 Response: 376236907  
 Conc: 42.09 ug/ml



#6 MCP

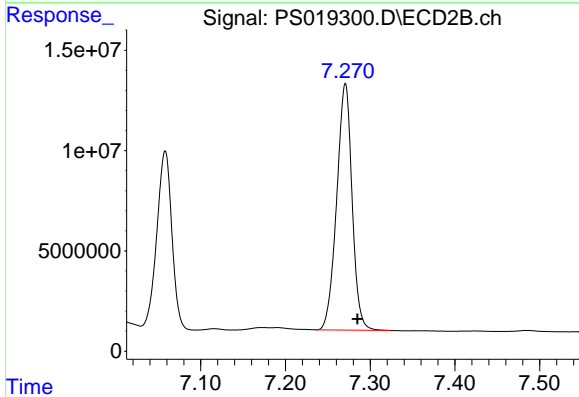
R.T.: 7.058 min  
 Delta R.T.: -0.012 min  
 Response: 111433693  
 Conc: 41.90 ug/ml



#7 MCPA

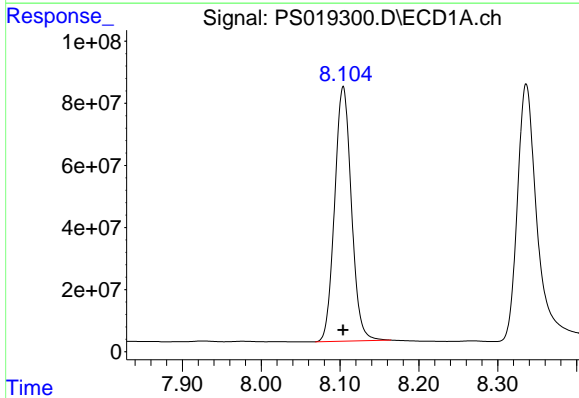
R.T.: 7.726 min  
 Delta R.T.: -0.012 min  
 Response: 526709381  
 Conc: 42.26 ug/ml

Instrument :  
 ECD\_S  
 ClientSampleId :



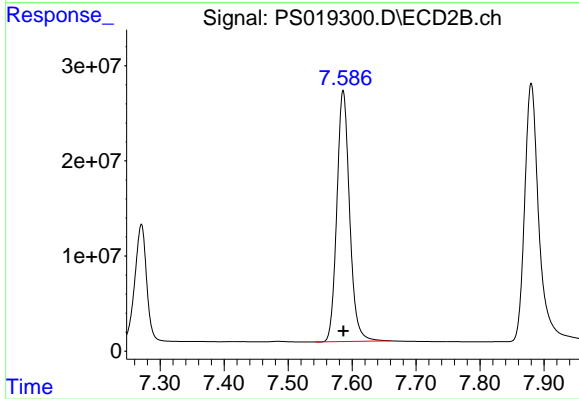
#7 MCPA

R.T.: 7.271 min  
 Delta R.T.: -0.014 min  
 Response: 155032717  
 Conc: 41.62 ug/ml



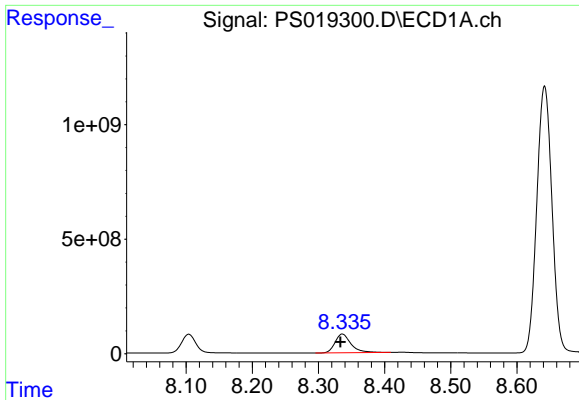
#8 DICHLORPROP

R.T.: 8.104 min  
 Delta R.T.: 0.000 min  
 Response: 1211399063  
 Conc: 433.02 ng/ml



#8 DICHLORPROP

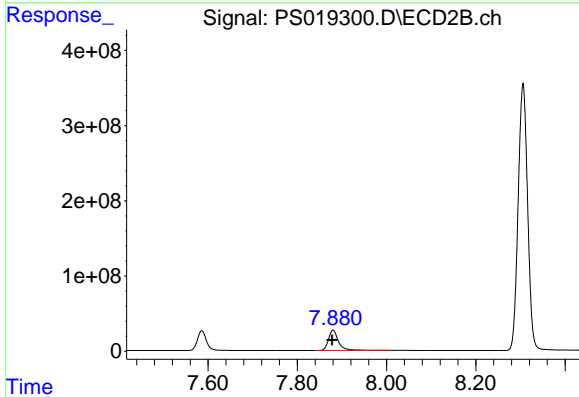
R.T.: 7.586 min  
 Delta R.T.: 0.000 min  
 Response: 365016982  
 Conc: 425.93 ng/ml



#9 2,4-D

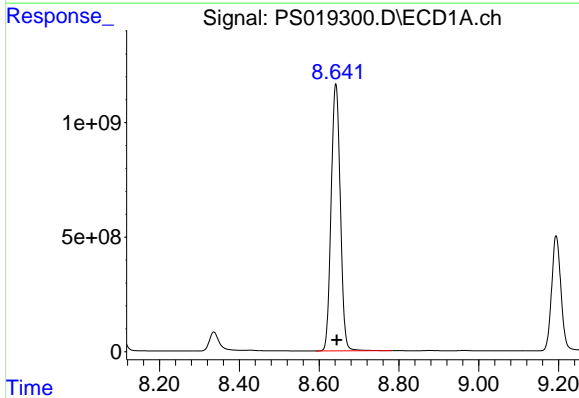
R.T.: 8.336 min  
Delta R.T.: 0.003 min  
Response: 1377048471  
Conc: 436.49 ng/ml

Instrument :  
ECD\_S  
ClientSampleId :



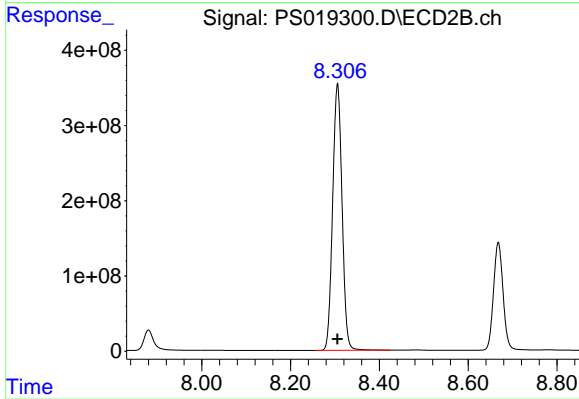
#9 2,4-D

R.T.: 7.880 min  
Delta R.T.: 0.002 min  
Response: 420924513  
Conc: 421.50 ng/ml



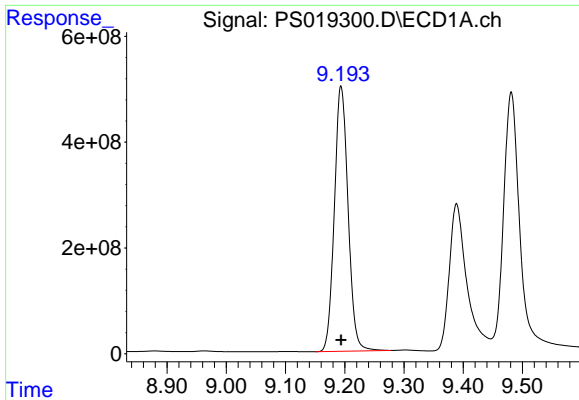
#10 Pentachlorophenol

R.T.: 8.642 min  
Delta R.T.: -0.003 min  
Response: 18597720889  
Conc: 473.39 ng/ml



#10 Pentachlorophenol

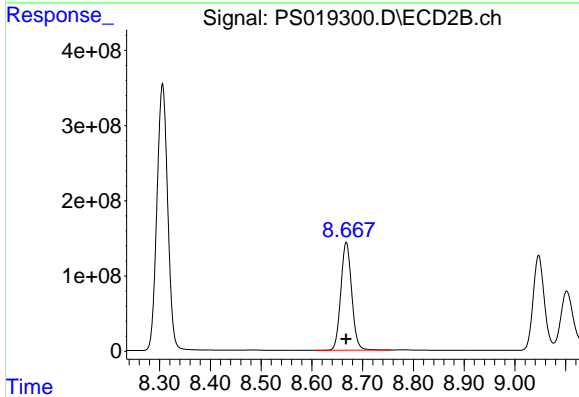
R.T.: 8.306 min  
Delta R.T.: 0.000 min  
Response: 5212478972  
Conc: 463.68 ng/ml



#11 2,4,5-TP (SILVEX)

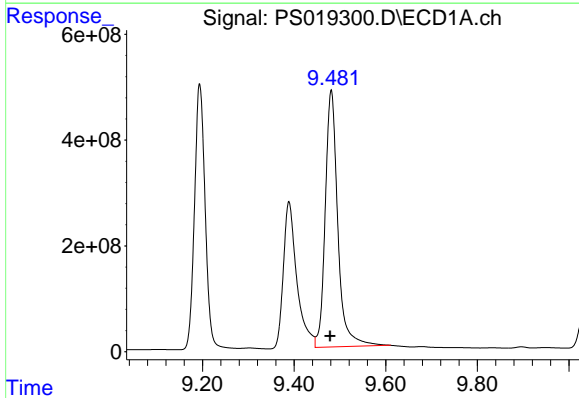
R.T.: 9.194 min  
 Delta R.T.: 0.000 min  
 Response: 8067821016  
 Conc: 446.35 ng/ml

Instrument :  
 ECD\_S  
 ClientSampleId :



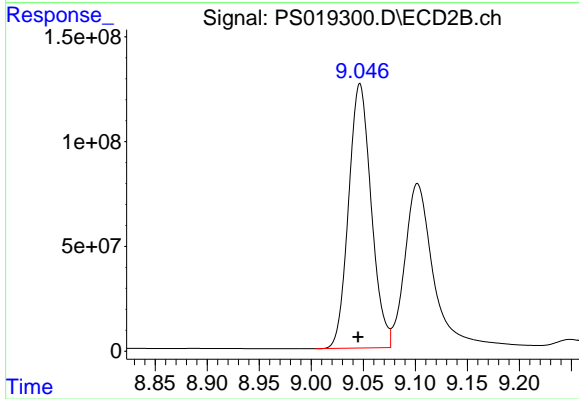
#11 2,4,5-TP (SILVEX)

R.T.: 8.668 min  
 Delta R.T.: 0.000 min  
 Response: 2135797237  
 Conc: 443.80 ng/ml



#12 2,4,5-T

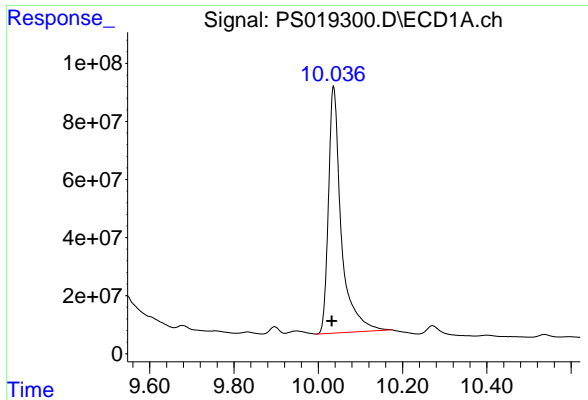
R.T.: 9.481 min  
 Delta R.T.: 0.002 min  
 Response: 9247704978  
 Conc: 437.22 ng/ml



#12 2,4,5-T

R.T.: 9.047 min  
 Delta R.T.: 0.002 min  
 Response: 1908588104  
 Conc: 440.78 ng/ml

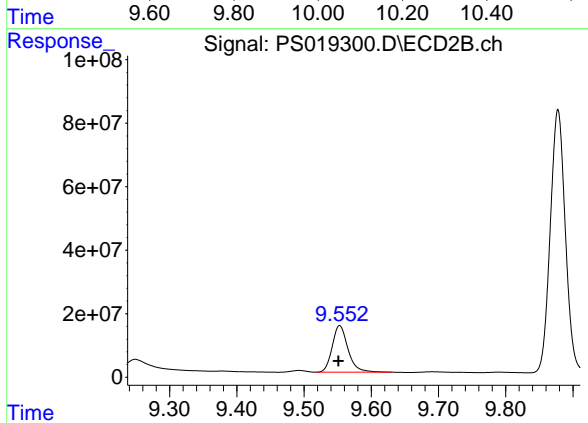




#13 2,4-DB

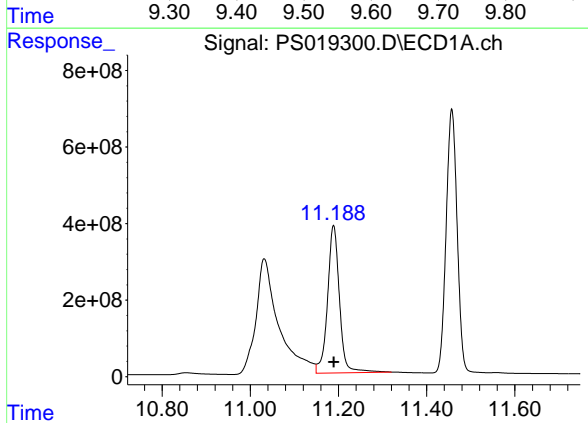
R.T.: 10.036 min  
 Delta R.T.: 0.004 min  
 Response: 1793802693  
 Conc: 418.31 ng/ml

Instrument :  
 ECD\_S  
 ClientSampleId :



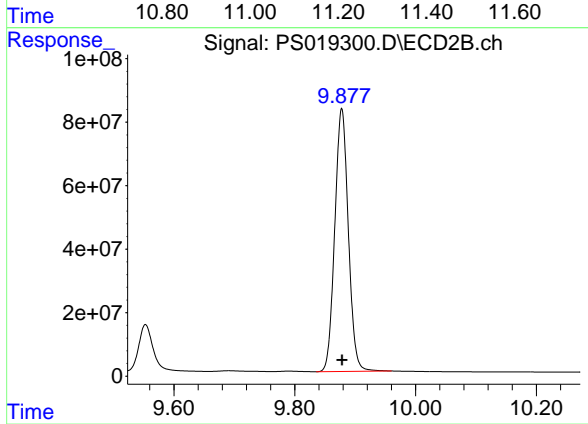
#13 2,4-DB

R.T.: 9.553 min  
 Delta R.T.: 0.002 min  
 Response: 238513850  
 Conc: 419.50 ng/ml



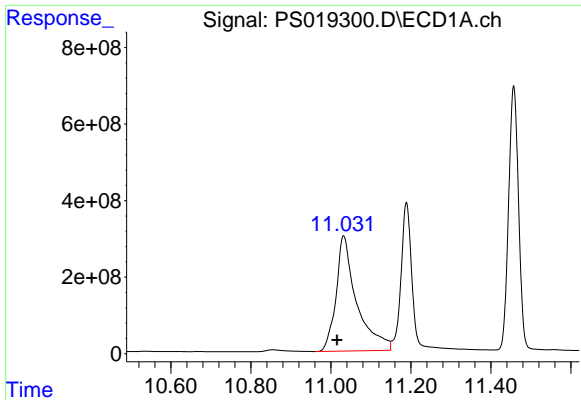
#14 DINOSEB

R.T.: 11.189 min  
 Delta R.T.: 0.000 min  
 Response: 7232992676  
 Conc: 438.06 ng/ml



#14 DINOSEB

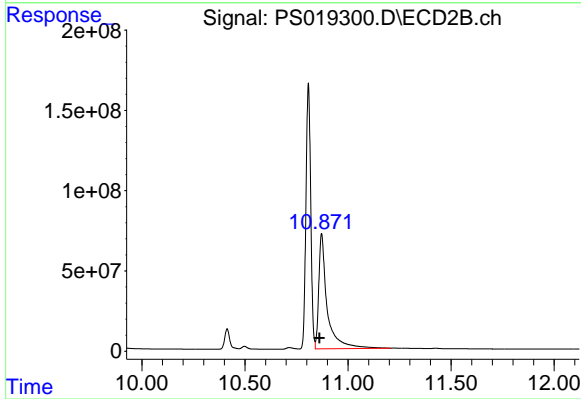
R.T.: 9.878 min  
 Delta R.T.: 0.000 min  
 Response: 1288097962  
 Conc: 444.50 ng/ml



#15 Picloram

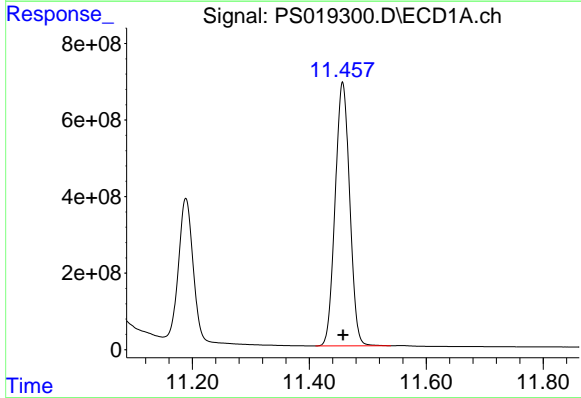
R.T.: 11.032 min  
 Delta R.T.: 0.016 min  
 Response: 10762614821  
 Conc: 368.20 ng/ml

Instrument :  
 ECD\_S  
 ClientSampleId :



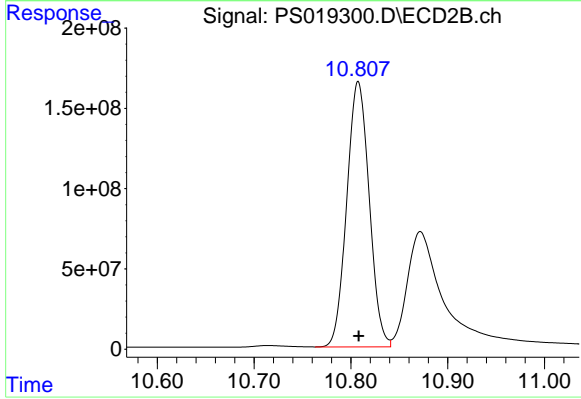
#15 Picloram

R.T.: 10.872 min  
 Delta R.T.: 0.010 min  
 Response: 2044152024  
 Conc: 341.79 ng/ml



#16 DCPA

R.T.: 11.457 min  
 Delta R.T.: 0.000 min  
 Response: 11890931463  
 Conc: 454.36 ng/ml



#16 DCPA

R.T.: 10.808 min  
 Delta R.T.: 0.000 min  
 Response: 2663648623  
 Conc: 453.74 ng/ml