

Data Path : Z:\pestpcbsrv\HPCHEM1\ECD_S\Data\PS050522\
 Data File : PS019331.D
 Signal(s) : Signal #1: ECD1A.ch Signal #2: ECD2B.ch
 Acq On : 06 May 2022 01:58
 Operator : AJ\MA
 Sample : PB144445BSD
 Misc :
 ALS Vial : 25 Sample Multiplier: 1

Instrument :
 ECD_S
 ClientSampleId :

Integration File signal 1: autoint1.e
 Integration File signal 2: autoint2.e
 Quant Time: May 06 02:43:05 2022
 Quant Method : Z:\pestpcbsrv\HPCHEM1\ECD_S\Method\PS050422.M
 Quant Title : 8080.M
 QLast Update : Wed May 04 16:27:11 2022
 Response via : Initial Calibration
 Integrator: ChemStation

Volume Inj. : 2 µl
 Signal #1 Phase : Rtx-CLPesticides Signal #2 Phase: Rtx-CLPesticides2
 Signal #1 Info : 30M x 0.32mm x0.5 Signal #2 Info : 30M x 0.32mm x 0.25µm

	Compound	RT#1	RT#2	Resp#1	Resp#2	ng/ml	ng/ml

System Monitoring Compounds							
4) S	2,4-DCAA	7.220	6.798	1597.1E6	397.3E6	584.818	512.912
Target Compounds							
1) T	Dalapon	3.027	2.530	2313.6E6	423.5E6	479.242	476.398
2) T	3,5-DICHL...	6.431	5.975	1781.6E6	583.0E6	504.040	499.913
3) T	4-Nitroph...	7.056	6.417	561.8E6	179.9E6	579.692	510.009
5) T	DICAMBA	7.409	6.963	5660.8E6	1716.0E6	512.553	512.103
6) T	MCP P	7.578	7.059	442.7E6	132.0E6	49.521	49.640
7) T	MCPA	7.728	7.272	616.2E6	184.1E6	49.442	49.430
8) T	DICHLORPROP	8.104	7.586	1410.5E6	430.9E6	504.178	502.758
9) T	2,4-D	8.336	7.879	1625.1E6	505.4E6	515.137	506.071
10) T	Pentachlo...	8.642	8.306	21229.5E6	6046.0E6	540.374	537.828
11) T	2,4,5-TP ...	9.194	8.667	9319.4E6	2521.7E6	515.594	523.983
12) T	2,4,5-T	9.481	9.046	10863.5E6	2287.9E6	513.615	528.387
13) T	2,4-DB	10.035	9.552	2178.0E6	286.8E6	507.908	504.460
14) T	DINOSEB	11.188	9.877	8819.7E6	1587.9E6	534.163	547.969
15) T	Picloram	11.028	10.868	14784.5E6	2830.6E6	505.799	473.282
16) T	DCPA	11.456	10.807	13914.2E6	3117.0E6	531.664	530.956

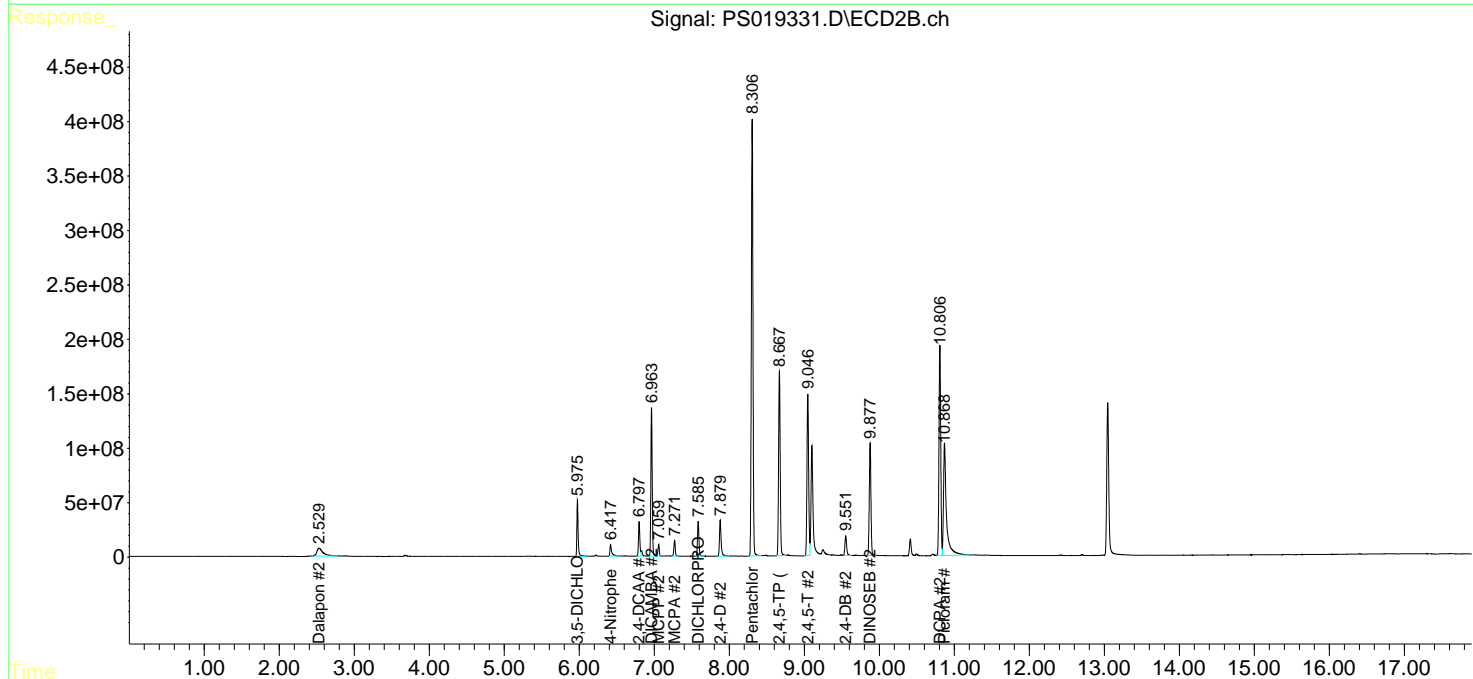
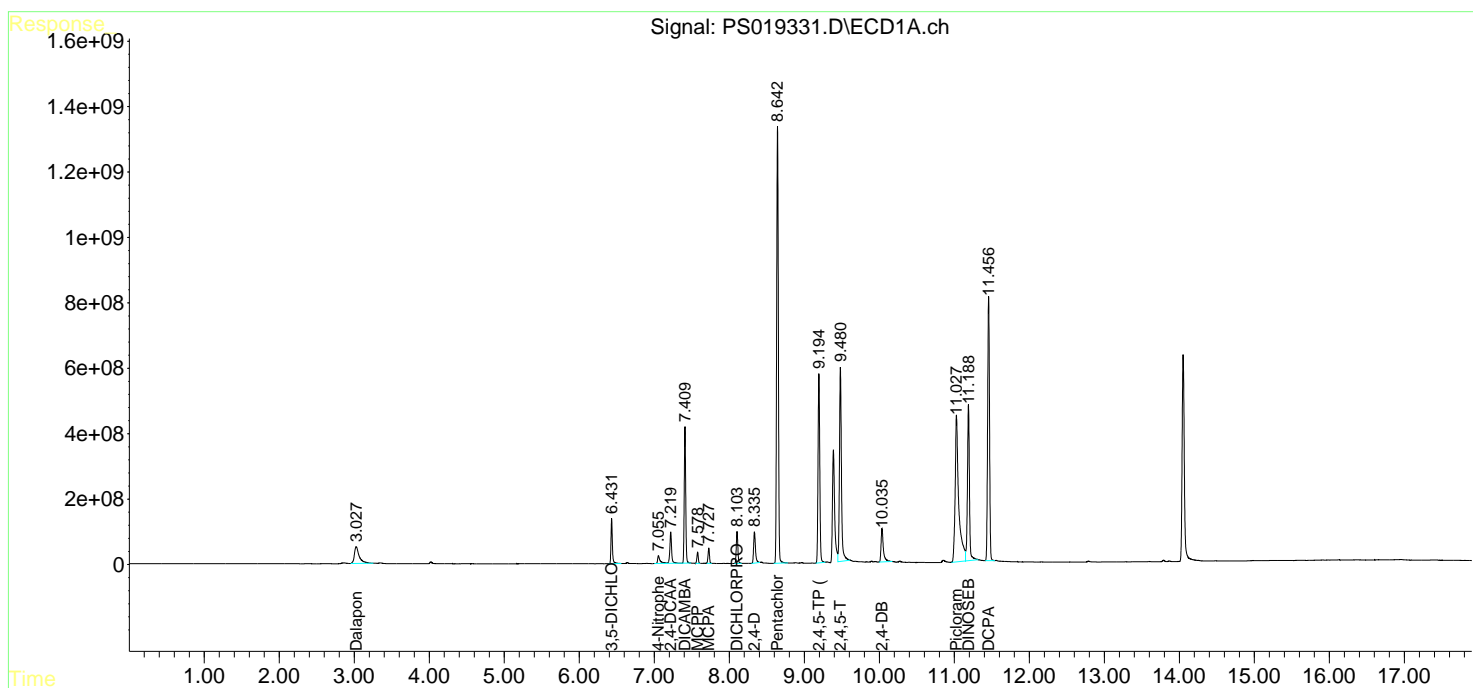
(f)=RT Delta > 1/2 Window (#)=Amounts differ by > 25% (m)=manual int.

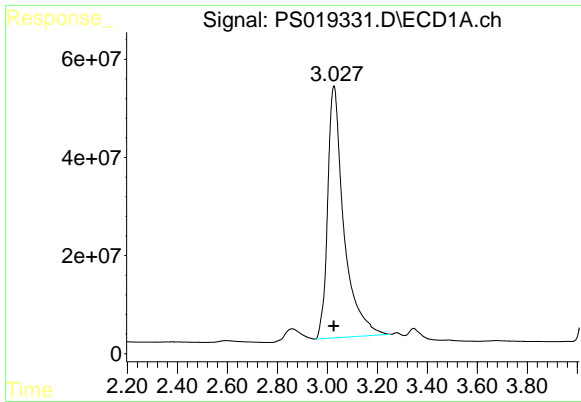
Data Path : Z:\pestpcbsrv\HPCHEM1\ECD_S\Data\PS050522\
 Data File : PS019331.D
 Signal(s) : Signal #1: ECD1A.ch Signal #2: ECD2B.ch
 Acq On : 06 May 2022 01:58
 Operator : AJ\MA
 Sample : PB144445BSD
 Misc :
 ALS Vial : 25 Sample Multiplier: 1

Instrument :
 ECD_S
 ClientSampleId :

Integration File signal 1: autoint1.e
 Integration File signal 2: autoint2.e
 Quant Time: May 06 02:43:05 2022
 Quant Method : Z:\pestpcbsrv\HPCHEM1\ECD_S\Method\PS050422.M
 Quant Title : 8080.M
 QLast Update : Wed May 04 16:27:11 2022
 Response via : Initial Calibration
 Integrator: ChemStation

Volume Inj. : 2 µl
 Signal #1 Phase : Rtx-CLPesticides Signal #2 Phase: Rtx-CLPesticides2
 Signal #1 Info : 30M x 0.32mm x0.5 Signal #2 Info : 30M x 0.32mm x 0.25µm

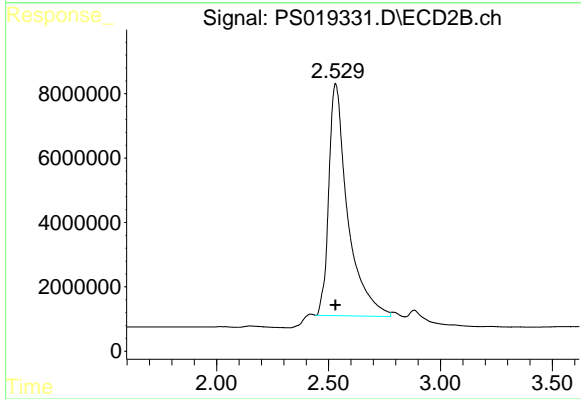




#1 Dalapon

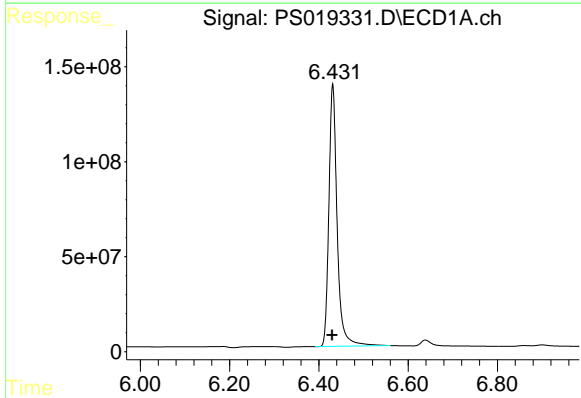
R.T.: 3.027 min
Delta R.T.: 0.000 min
Response: 2313632507
Conc: 479.24 ng/ml

Instrument :
ECD_S
ClientSampleId :



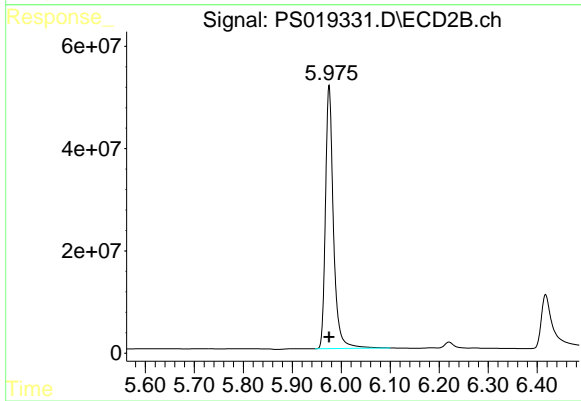
#1 Dalapon

R.T.: 2.530 min
Delta R.T.: 0.000 min
Response: 423480193
Conc: 476.40 ng/ml



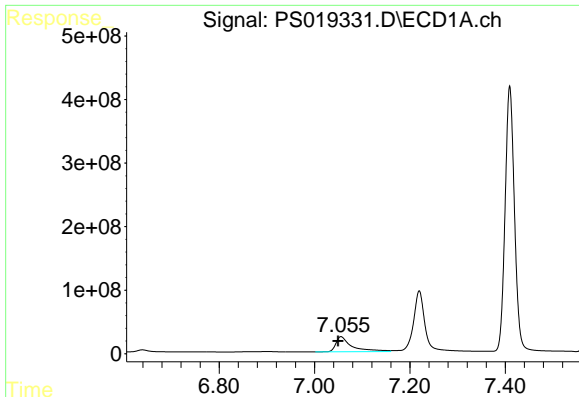
#2 3,5-DICHLOROBENZOIC ACID

R.T.: 6.431 min
Delta R.T.: 0.001 min
Response: 1781619606
Conc: 504.04 ng/ml



#2 3,5-DICHLOROBENZOIC ACID

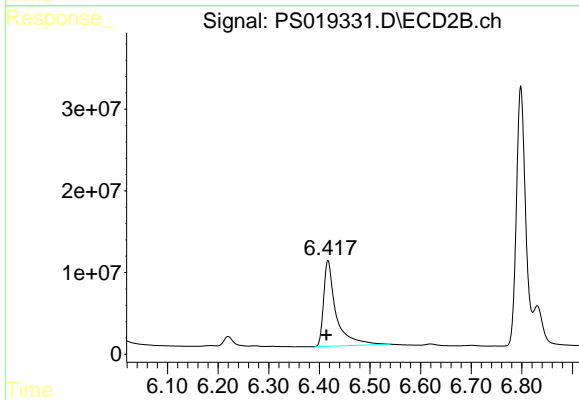
R.T.: 5.975 min
Delta R.T.: 0.000 min
Response: 583020911
Conc: 499.91 ng/ml



#3 4-Nitrophenol

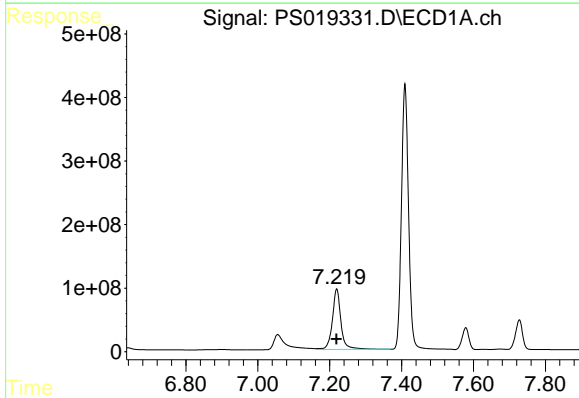
R.T.: 7.056 min
 Delta R.T.: 0.006 min
 Response: 561773056
 Conc: 579.69 ng/ml

Instrument :
 ECD_S
 ClientSampleId :



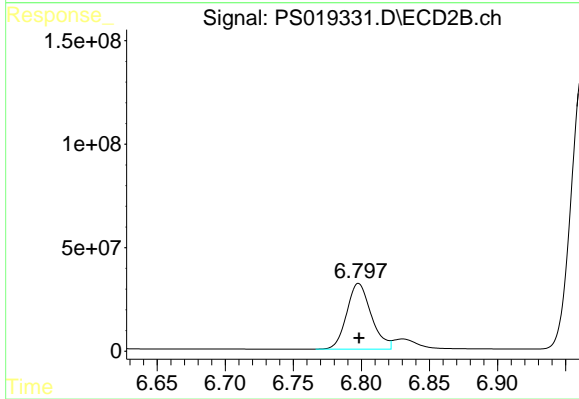
#3 4-Nitrophenol

R.T.: 6.417 min
 Delta R.T.: 0.003 min
 Response: 179948168
 Conc: 510.01 ng/ml



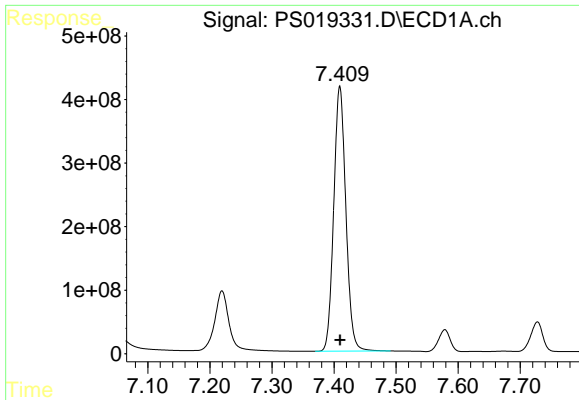
#4 2,4-DCAA

R.T.: 7.220 min
 Delta R.T.: 0.000 min
 Response: 1597064722
 Conc: 584.82 ng/ml



#4 2,4-DCAA

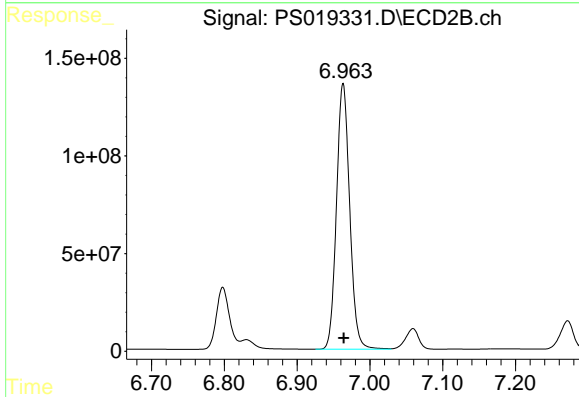
R.T.: 6.798 min
 Delta R.T.: 0.000 min
 Response: 397279268
 Conc: 512.91 ng/ml



#5 DICAMBA

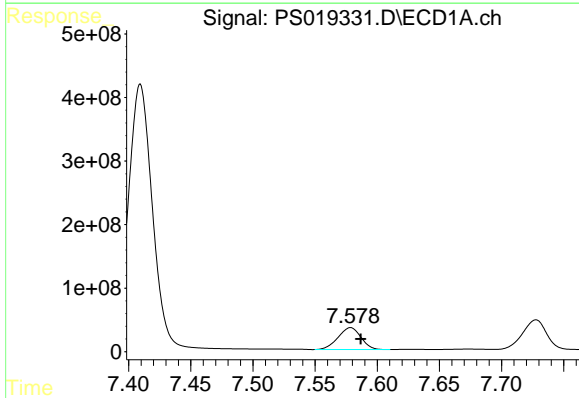
R.T.: 7.409 min
 Delta R.T.: 0.000 min
 Response: 5660787169
 Conc: 512.55 ng/ml

Instrument :
 ECD_S
 ClientSampleId :



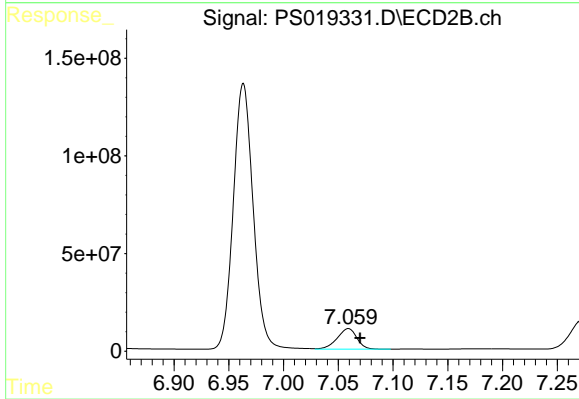
#5 DICAMBA

R.T.: 6.963 min
 Delta R.T.: 0.000 min
 Response: 1715963026
 Conc: 512.10 ng/ml



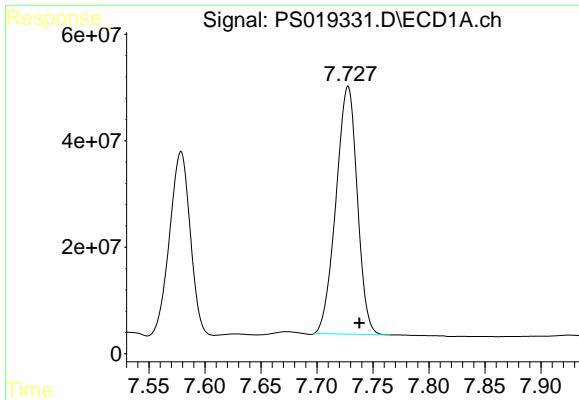
#6 MCPP

R.T.: 7.578 min
 Delta R.T.: -0.008 min
 Response: 442679843
 Conc: 49.52 ug/ml



#6 MCPP

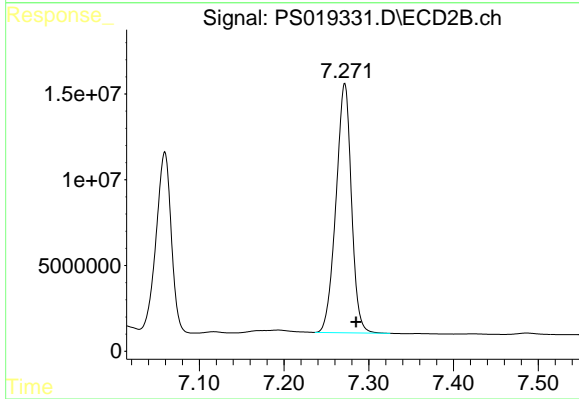
R.T.: 7.059 min
 Delta R.T.: -0.011 min
 Response: 132009965
 Conc: 49.64 ug/ml



#7 MCPA

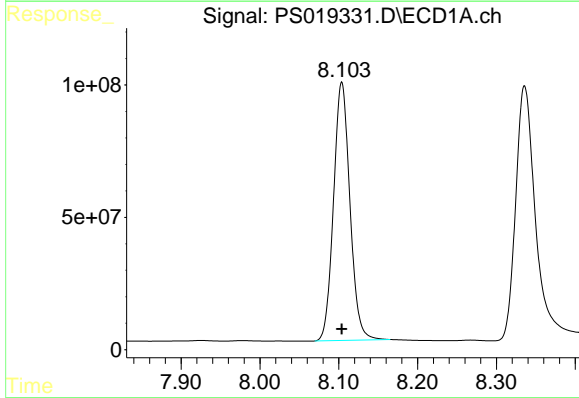
R.T.: 7.728 min
 Delta R.T.: -0.010 min
 Response: 616194920
 Conc: 49.44 ug/ml

Instrument :
 ECD_S
 ClientSampleId :



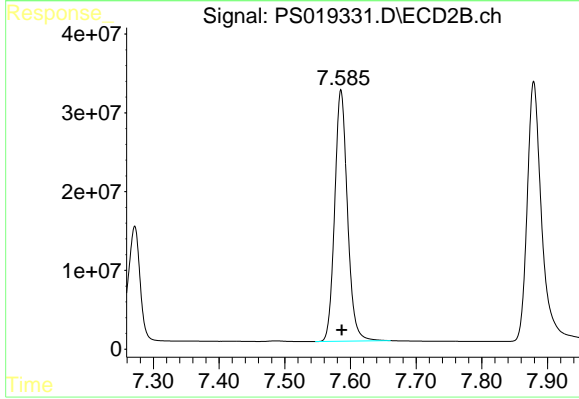
#7 MCPA

R.T.: 7.272 min
 Delta R.T.: -0.013 min
 Response: 184109287
 Conc: 49.43 ug/ml



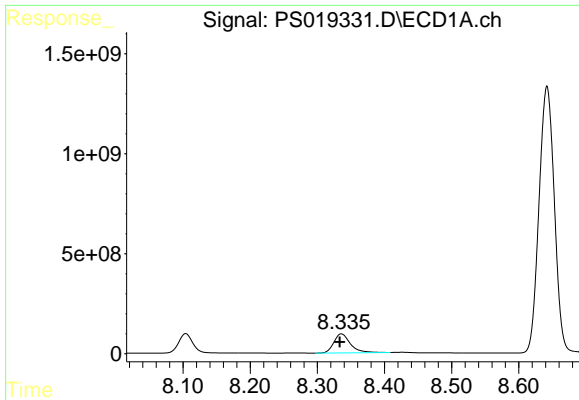
#8 DICHLORPROP

R.T.: 8.104 min
 Delta R.T.: 0.000 min
 Response: 1410476237
 Conc: 504.18 ng/ml



#8 DICHLORPROP

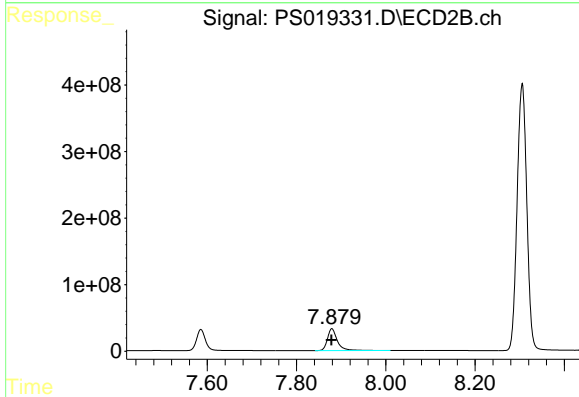
R.T.: 7.586 min
 Delta R.T.: 0.000 min
 Response: 430862725
 Conc: 502.76 ng/ml



#9 2,4-D

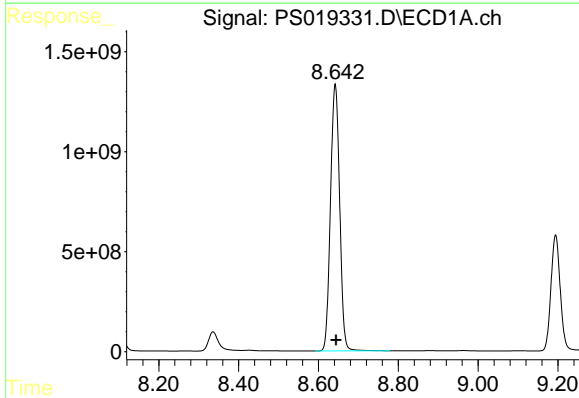
R.T.: 8.336 min
 Delta R.T.: 0.002 min
 Response: 1625149800
 Conc: 515.14 ng/ml

Instrument :
 ECD_S
 ClientSampleId :



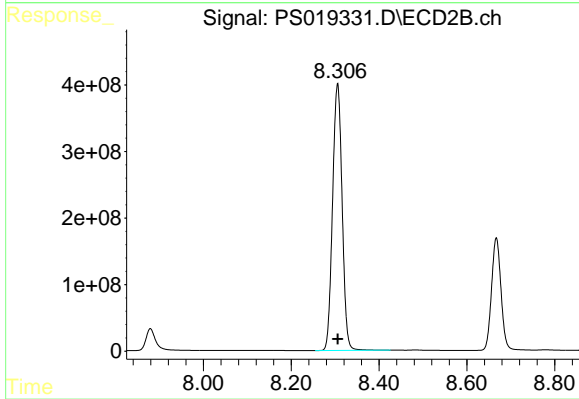
#9 2,4-D

R.T.: 7.879 min
 Delta R.T.: 0.000 min
 Response: 505378835
 Conc: 506.07 ng/ml



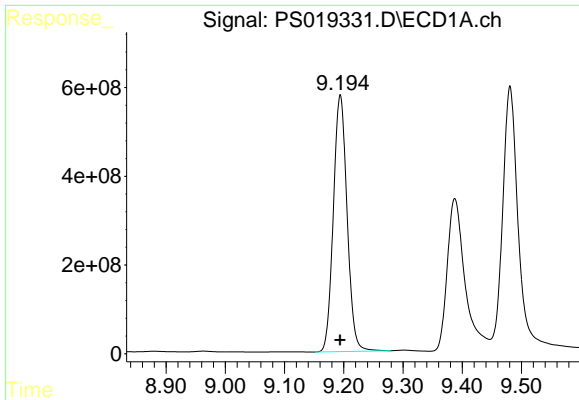
#10 Pentachlorophenol

R.T.: 8.642 min
 Delta R.T.: -0.003 min
 Response: 21229468995
 Conc: 540.37 ng/ml



#10 Pentachlorophenol

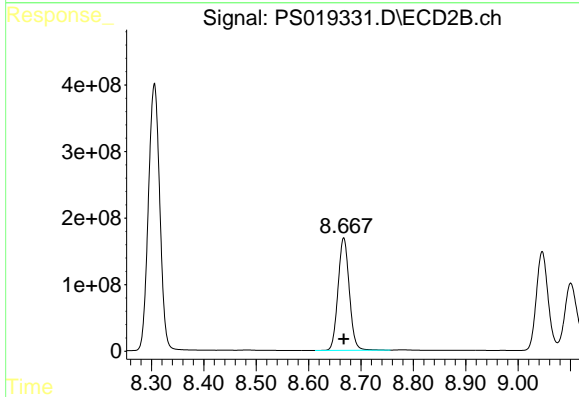
R.T.: 8.306 min
 Delta R.T.: 0.000 min
 Response: 6045960121
 Conc: 537.83 ng/ml



#11 2,4,5-TP (SILVEX)

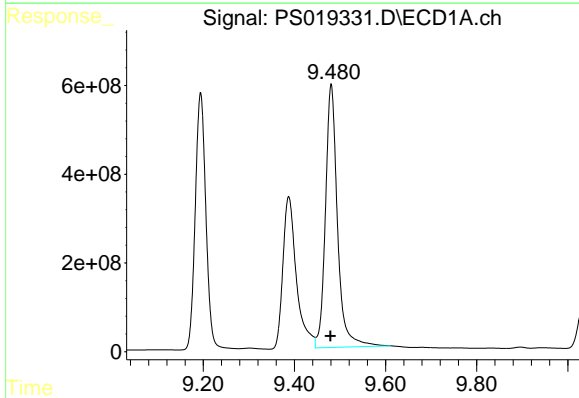
R.T.: 9.194 min
 Delta R.T.: 0.000 min
 Response: 9319418815
 Conc: 515.59 ng/ml

Instrument :
 ECD_S
 ClientSampleId :



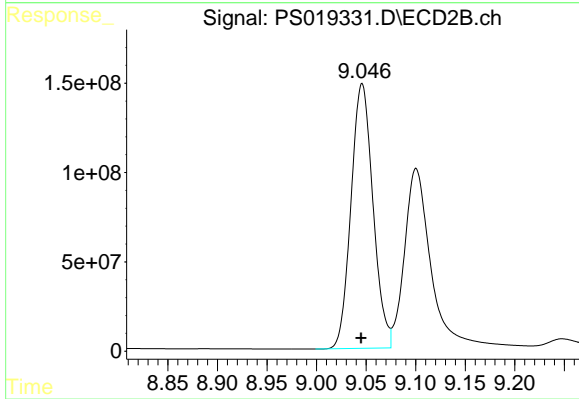
#11 2,4,5-TP (SILVEX)

R.T.: 8.667 min
 Delta R.T.: 0.000 min
 Response: 2521691060
 Conc: 523.98 ng/ml



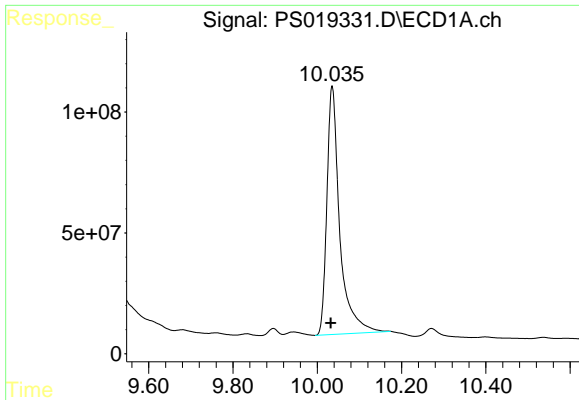
#12 2,4,5-T

R.T.: 9.481 min
 Delta R.T.: 0.002 min
 Response: 10863508139
 Conc: 513.61 ng/ml



#12 2,4,5-T

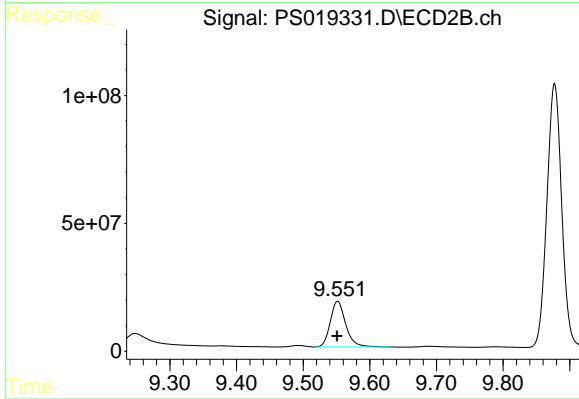
R.T.: 9.046 min
 Delta R.T.: 0.001 min
 Response: 2287948514
 Conc: 528.39 ng/ml



#13 2,4-DB

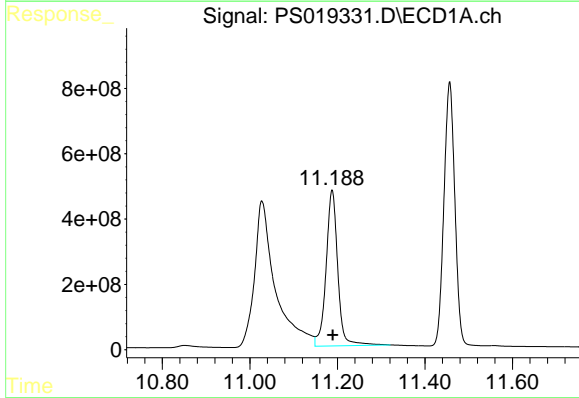
R.T.: 10.035 min
 Delta R.T.: 0.003 min
 Response: 2178042447
 Conc: 507.91 ng/ml

Instrument :
 ECD_S
 ClientSampleId :



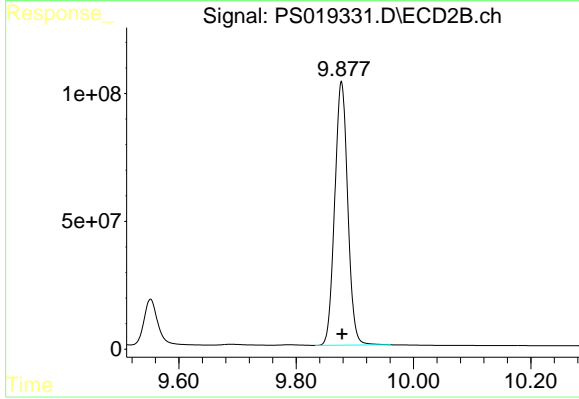
#13 2,4-DB

R.T.: 9.552 min
 Delta R.T.: 0.000 min
 Response: 286816621
 Conc: 504.46 ng/ml



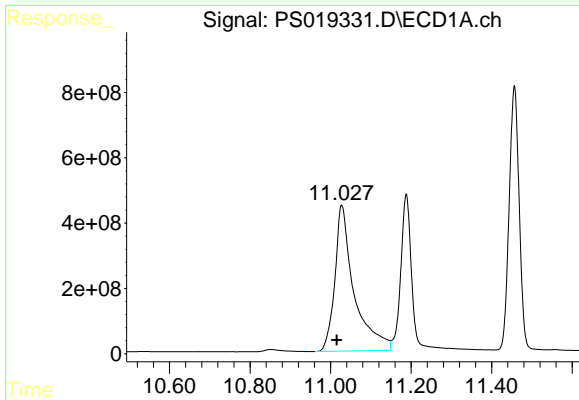
#14 DINOSEB

R.T.: 11.188 min
 Delta R.T.: -0.001 min
 Response: 8819746367
 Conc: 534.16 ng/ml



#14 DINOSEB

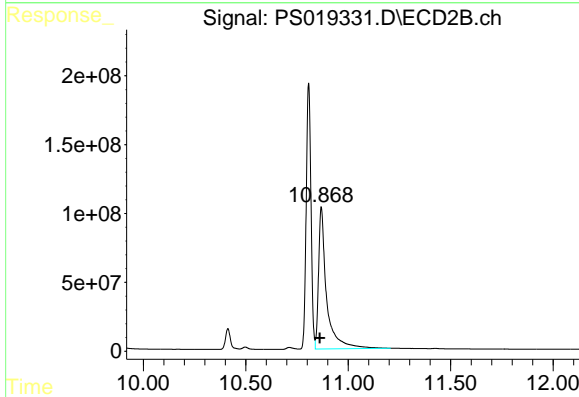
R.T.: 9.877 min
 Delta R.T.: 0.000 min
 Response: 1587949042
 Conc: 547.97 ng/ml



#15 Picloram

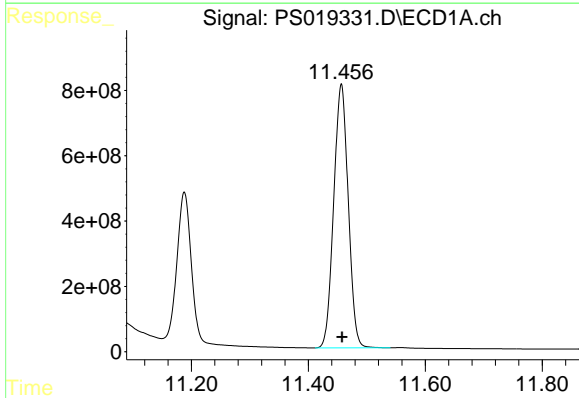
R.T.: 11.028 min
 Delta R.T.: 0.012 min
 Response: 14784547694
 Conc: 505.80 ng/ml

Instrument :
 ECD_S
 ClientSampleId :



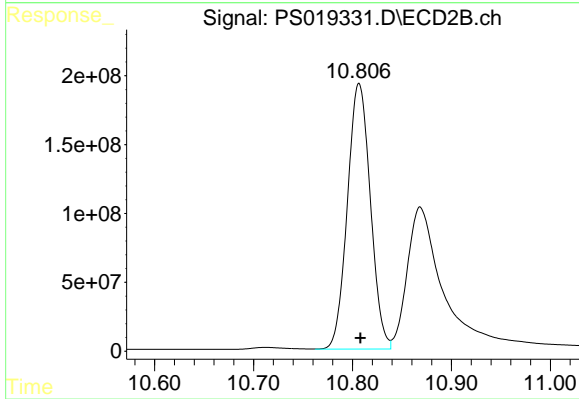
#15 Picloram

R.T.: 10.868 min
 Delta R.T.: 0.007 min
 Response: 2830602884
 Conc: 473.28 ng/ml



#16 DCPA

R.T.: 11.456 min
 Delta R.T.: -0.002 min
 Response: 13914164498
 Conc: 531.66 ng/ml



#16 DCPA

R.T.: 10.807 min
 Delta R.T.: -0.001 min
 Response: 3116957815
 Conc: 530.96 ng/ml