

Data Path : Z:\pestpcbsrv\HPCHEM1\ECD_S\Data\PS050621\
 Data File : PS014923.D
 Signal(s) : Signal #1: ECD1A.ch Signal #2: ECD2B.ch
 Acq On : 06 May 2021 17:29
 Operator : DD\AJ
 Sample : PB136168BS
 Misc :
 ALS Vial : 5 Sample Multiplier: 1

Instrument :
 ECD_S
ClientSampleId :
 PB136168BS

Manual Integrations
APPROVED
 Ankita
 5/7/2021 4:18:28 PM

Integration File signal 1: autoint1.e
 Integration File signal 2: autoint2.e
 Quant Time: May 06 18:29:30 2021
 Quant Method : Z:\pestpcbsrv\HPCHEM1\ECD_S\Method\PS040821.M
 Quant Title : 8080.M
 QLast Update : Thu Apr 08 14:34:06 2021
 Response via : Initial Calibration
 Integrator: ChemStation

Volume Inj. : 2 µl
 Signal #1 Phase : Rtx-CLPesticides Signal #2 Phase: Rtx-CLPesticides2
 Signal #1 Info : 30M x 0.32mm x0.5 Signal #2 Info : 30M x 0.32mm x 0.25µm

	Compound	RT#1	RT#2	Resp#1	Resp#2	ng/ml	ng/ml

System Monitoring Compounds							
4) S	2,4-DCAA	7.155	6.885	923.8E6	278.6E6	607.318	598.472m
Target Compounds							
1) T	Dalapon	3.004	2.603	972.6E6	453.8E6	539.361m	697.320 #
2) T	3,5-DICHL...	6.381	6.048	1225.4E6	374.4E6	591.391	510.621
3) T	4-Nitroph...	6.992	6.505	403.2E6	112.9E6	496.154	399.834
5) T	DICAMBA	7.342	7.049	3226.0E6	1094.3E6	554.446	541.046
6) T	MCP P	7.506	7.143	255.7E6	92845531	58.726	55.132
7) T	MCPA	7.654	7.356	312.9E6	158.3E6	50.277	65.202 #
8) T	DICHLORPROP	8.027	7.676	817.0E6	294.6E6	583.880	583.506
9) T	2,4-D	8.259	7.973	990.2E6	368.1E6	622.775	661.898
10) T	Pentachlo...	8.562	8.393	12812.9E6	3982.1E6	609.651	592.346
11) T	2,4,5-TP ...	9.106	8.755	5101.6E6	1703.9E6	623.174	623.754
12) T	2,4,5-T	9.393	9.136	4655.5E6	1425.9E6	565.948	545.160
13) T	2,4-DB	9.942	9.642	592.2E6	179.7E6	389.143	518.049 #
14) T	DINOSEB	11.088	9.970	3534.2E6	1015.9E6	548.485	527.579
15) T	Picloram	10.922	10.960	4422.1E6	1488.5E6	395.243	396.942
16) T	DCPA	11.355	10.895	5404.7E6	1981.0E6	438.620	487.846

(f)=RT Delta > 1/2 Window (#)=Amounts differ by > 25% (m)=manual int.

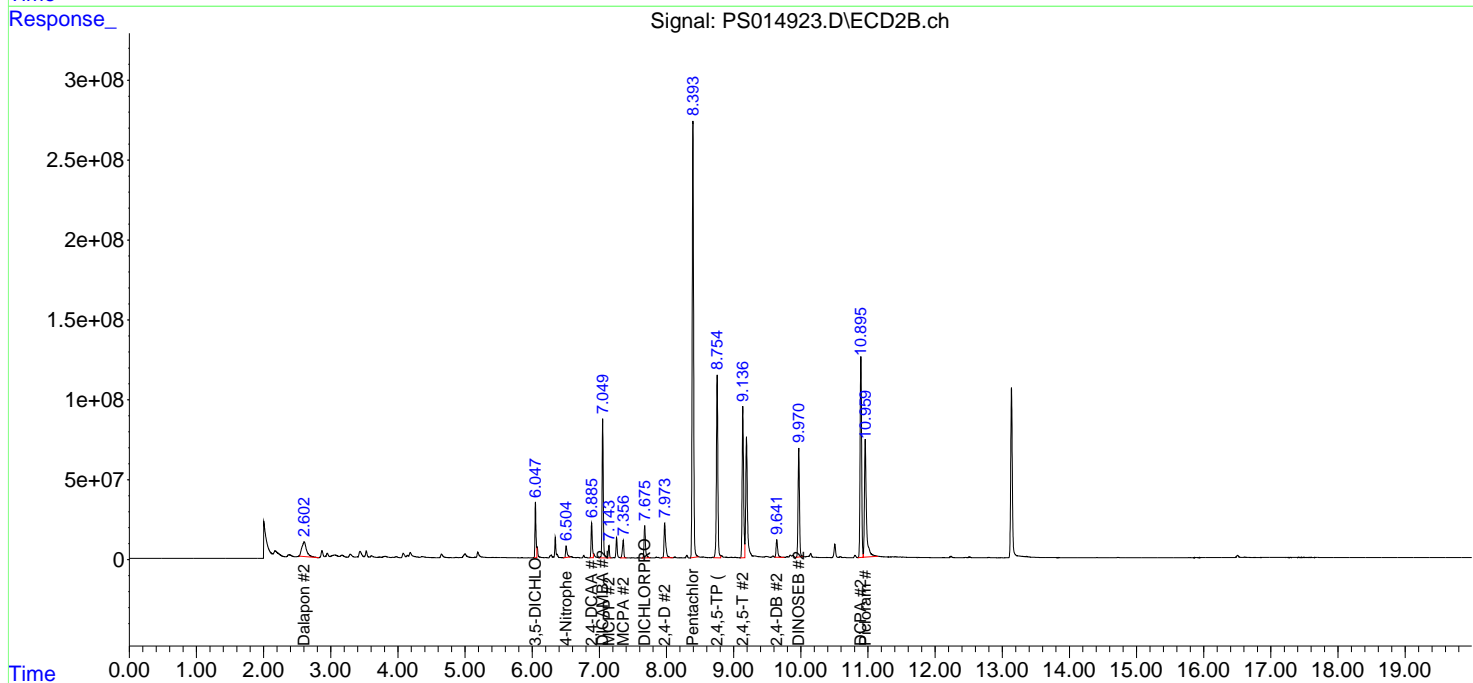
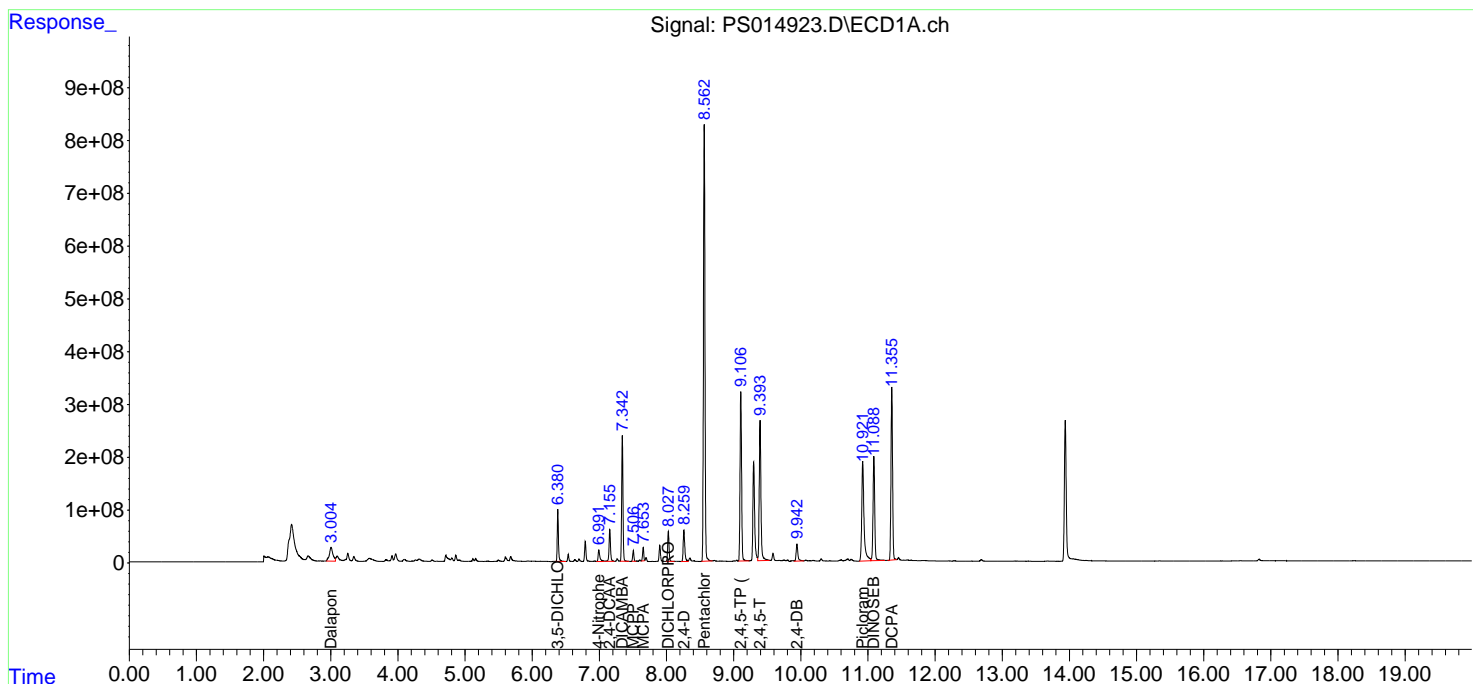
Data Path : Z:\pestpcbsrv\HPCHEM1\ECD_S\Data\PS050621\
 Data File : PS014923.D
 Signal(s) : Signal #1: ECD1A.ch Signal #2: ECD2B.ch
 Acq On : 06 May 2021 17:29
 Operator : DD\AJ
 Sample : PB136168BS
 Misc :
 ALS Vial : 5 Sample Multiplier: 1

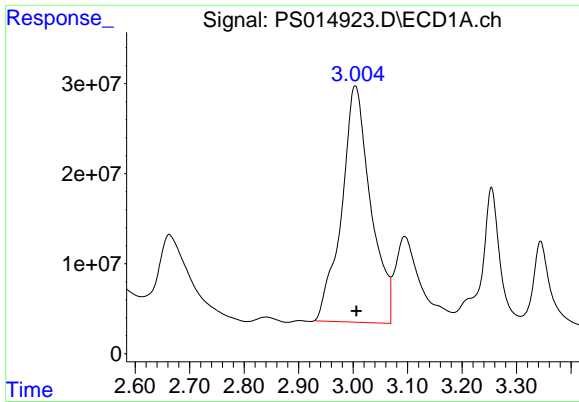
Instrument :
 ECD_S
 ClientSampled :
 PB136168BS

Manual Integrations
APPROVED
 Ankita
 5/7/2021 4:18:28 PM

Integration File signal 1: autoint1.e
 Integration File signal 2: autoint2.e
 Quant Time: May 06 18:29:30 2021
 Quant Method : Z:\pestpcbsrv\HPCHEM1\ECD_S\Method\PS040821.M
 Quant Title : 8080.M
 QLast Update : Thu Apr 08 14:34:06 2021
 Response via : Initial Calibration
 Integrator: ChemStation

Volume Inj. : 2 µl
 Signal #1 Phase : Rtx-CLPesticides Signal #2 Phase: Rtx-CLPesticides2
 Signal #1 Info : 30M x 0.32mm x0.5 Signal #2 Info : 30M x 0.32mm x 0.25µm





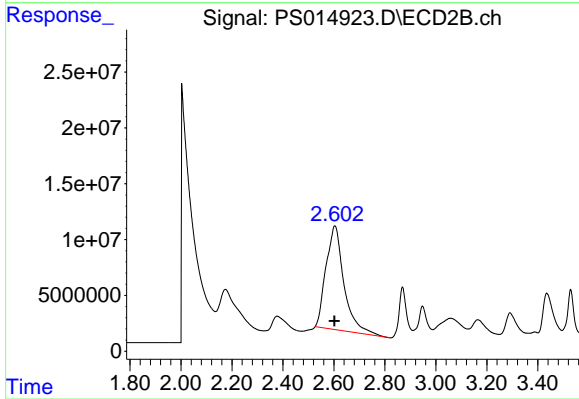
#1 Dalapon

R.T.: 3.004 min
 Delta R.T.: -0.002 min
 Response: 972559645
 Conc: 539.36 ng/ml m

Instrument :
 ECD_S
 ClientSampleId :
 PB136168BS

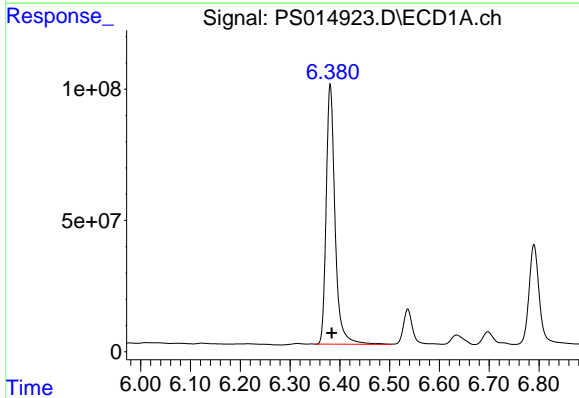
Manual Integrations
 APPROVED

Ankita
 5/7/2021 4:18:28 PM



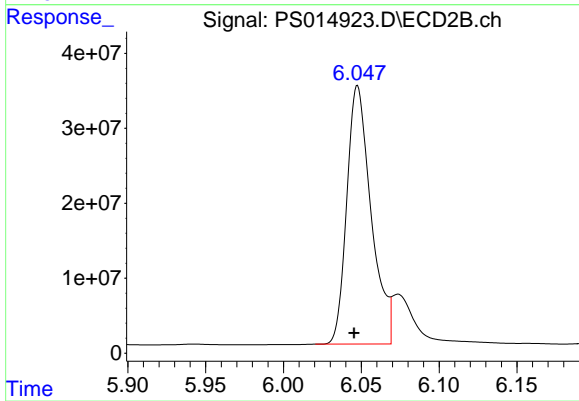
#1 Dalapon

R.T.: 2.603 min
 Delta R.T.: 0.000 min
 Response: 453833192
 Conc: 697.32 ng/ml



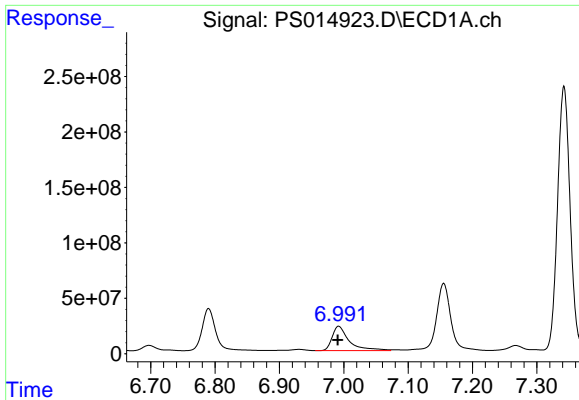
#2 3,5-DICHLOROBENZOIC ACID

R.T.: 6.381 min
 Delta R.T.: -0.003 min
 Response: 1225364208
 Conc: 591.39 ng/ml



#2 3,5-DICHLOROBENZOIC ACID

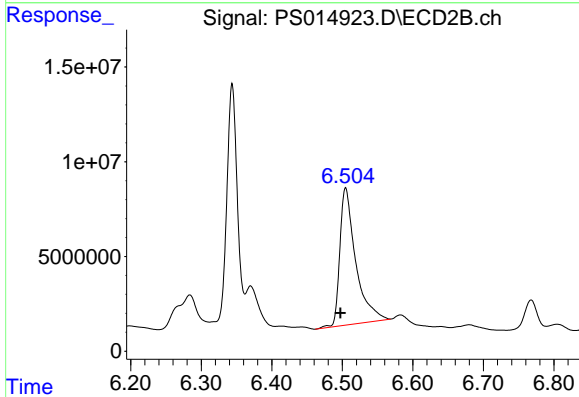
R.T.: 6.048 min
 Delta R.T.: 0.002 min
 Response: 374436957
 Conc: 510.62 ng/ml



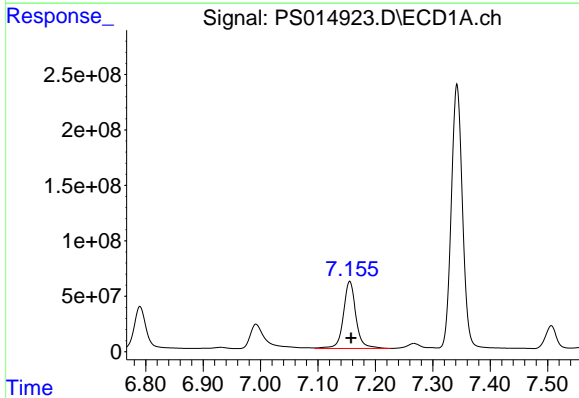
#3 4-Nitrophenol
 R.T.: 6.992 min
 Delta R.T.: 0.001 min
 Response: 403185903
 Conc: 496.15 ng/ml

Instrument :
 ECD_S
ClientSampled :
 PB136168BS

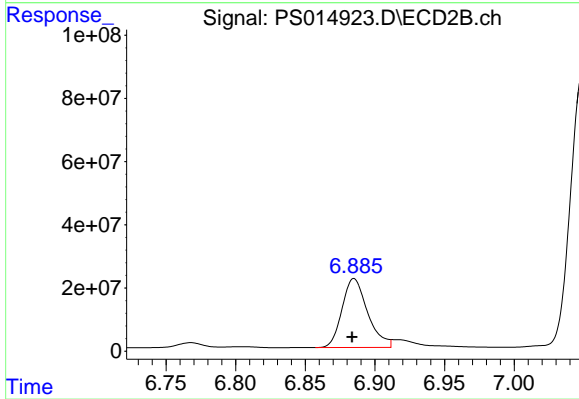
Manual Integrations
APPROVED
 Ankita
 5/7/2021 4:18:28 PM



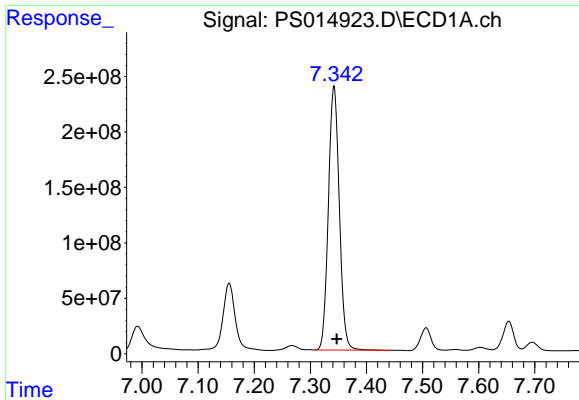
#3 4-Nitrophenol
 R.T.: 6.505 min
 Delta R.T.: 0.008 min
 Response: 112886228
 Conc: 399.83 ng/ml



#4 2,4-DCAA
 R.T.: 7.155 min
 Delta R.T.: -0.003 min
 Response: 923849781
 Conc: 607.32 ng/ml



#4 2,4-DCAA
 R.T.: 6.885 min
 Delta R.T.: 0.000 min
 Response: 278561576
 Conc: 598.47 ng/ml m

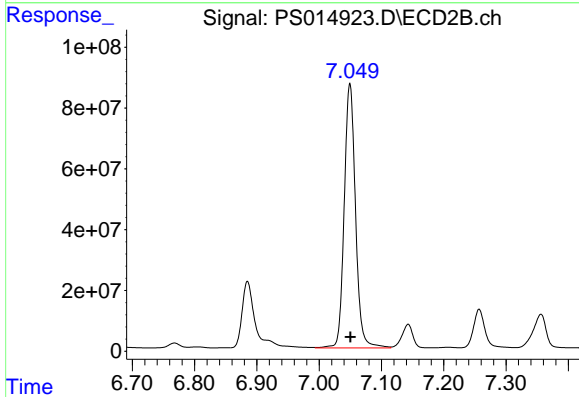


#5 DICAMBA

R.T.: 7.342 min
 Delta R.T.: -0.005 min
 Response: 3225962572
 Conc: 554.45 ng/ml

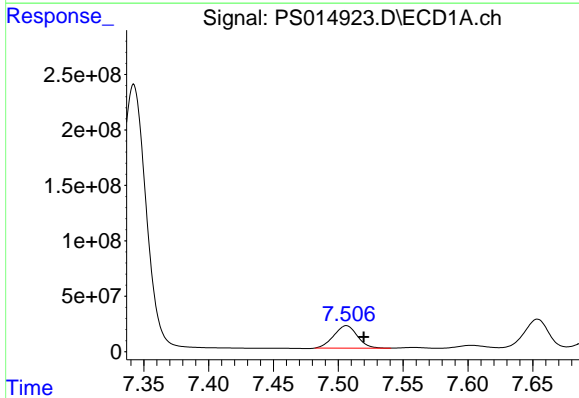
Instrument :
 ECD_S
 ClientSampleId :
 PB136168BS

Manual Integrations
 APPROVED
 Ankita
 5/7/2021 4:18:28 PM



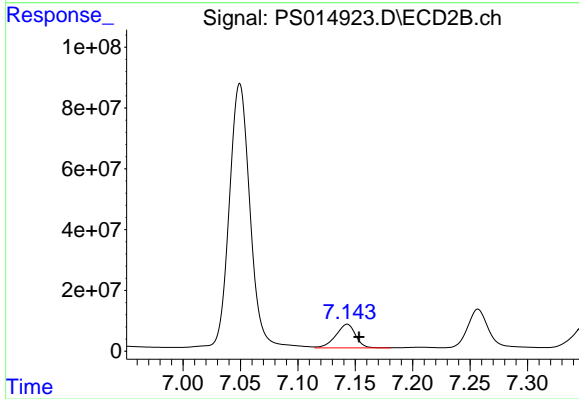
#5 DICAMBA

R.T.: 7.049 min
 Delta R.T.: 0.000 min
 Response: 1094279004
 Conc: 541.05 ng/ml



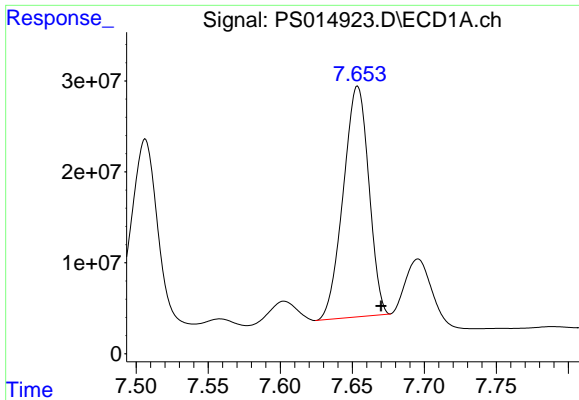
#6 MCPP

R.T.: 7.506 min
 Delta R.T.: -0.013 min
 Response: 255706224
 Conc: 58.73 ug/ml



#6 MCPP

R.T.: 7.143 min
 Delta R.T.: -0.010 min
 Response: 92845531
 Conc: 55.13 ug/ml

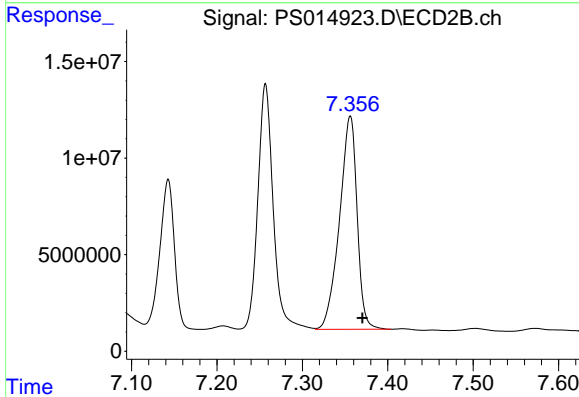


#7 MCPA

R.T.: 7.654 min
 Delta R.T.: -0.016 min
 Response: 312869472
 Conc: 50.28 ug/ml

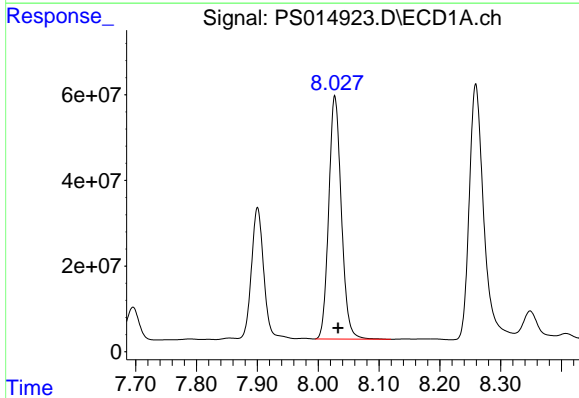
Instrument :
 ECD_S
 ClientSampleId :
 PB136168BS

Manual Integrations
 APPROVED
 Ankita
 5/7/2021 4:18:28 PM



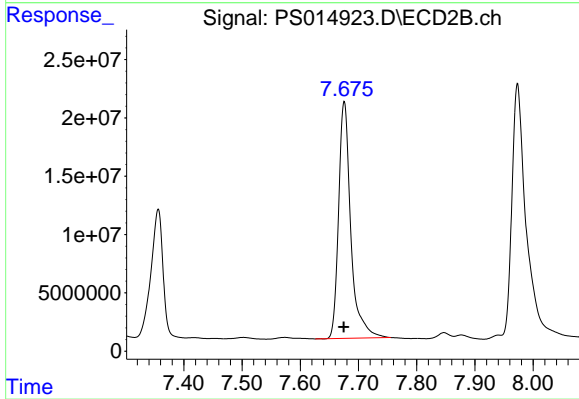
#7 MCPA

R.T.: 7.356 min
 Delta R.T.: -0.014 min
 Response: 158343909
 Conc: 65.20 ug/ml



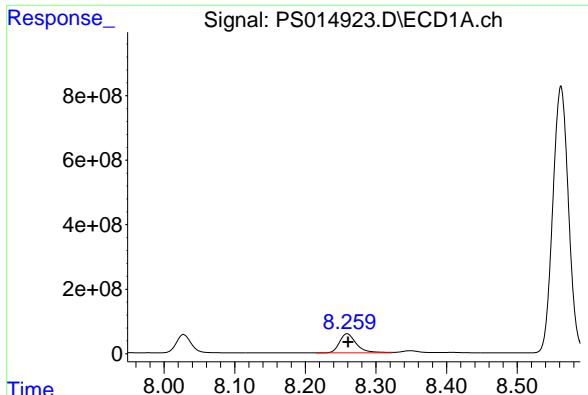
#8 DICHLORPROP

R.T.: 8.027 min
 Delta R.T.: -0.005 min
 Response: 817041398
 Conc: 583.88 ng/ml



#8 DICHLORPROP

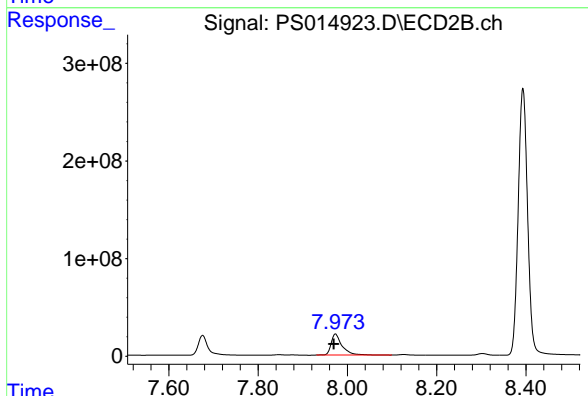
R.T.: 7.676 min
 Delta R.T.: 0.000 min
 Response: 294565887
 Conc: 583.51 ng/ml



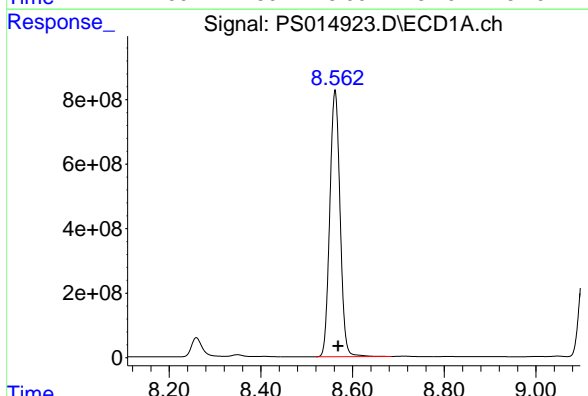
#9 2,4-D
 R.T.: 8.259 min
 Delta R.T.: -0.002 min
 Response: 990203092
 Conc: 622.77 ng/ml

Instrument :
 ECD_S
ClientSampleId :
 PB136168BS

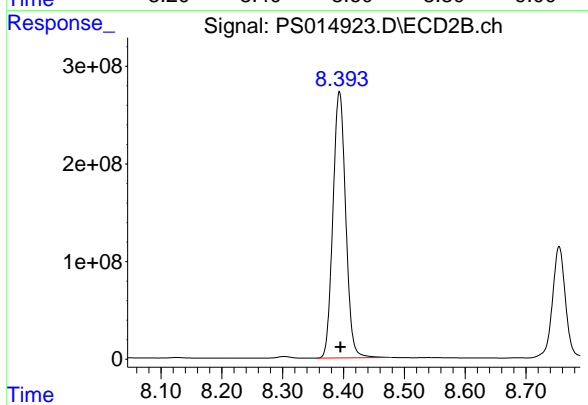
Manual Integrations
APPROVED
 Ankita
 5/7/2021 4:18:28 PM



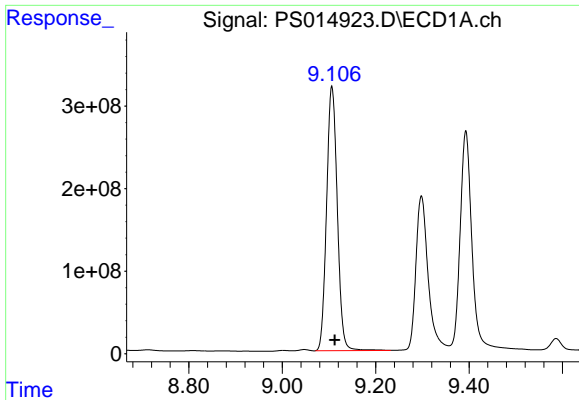
#9 2,4-D
 R.T.: 7.973 min
 Delta R.T.: 0.003 min
 Response: 368077459
 Conc: 661.90 ng/ml



#10 Pentachlorophenol
 R.T.: 8.562 min
 Delta R.T.: -0.007 min
 Response: 12812881540
 Conc: 609.65 ng/ml



#10 Pentachlorophenol
 R.T.: 8.393 min
 Delta R.T.: -0.001 min
 Response: 3982073346
 Conc: 592.35 ng/ml

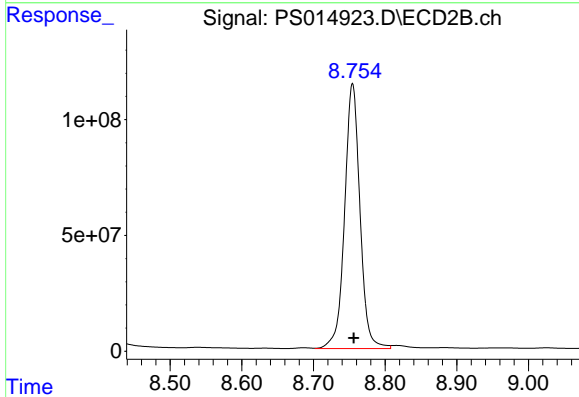


#11 2,4,5-TP (SILVEX)

R.T.: 9.106 min
 Delta R.T.: -0.006 min
 Response: 5101563277
 Conc: 623.17 ng/ml

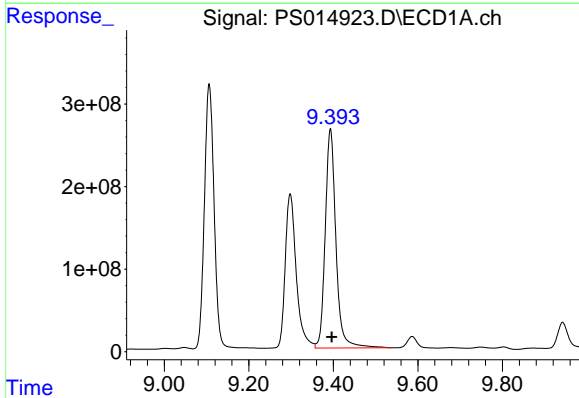
Instrument :
 ECD_S
 ClientSampleId :
 PB136168BS

Manual Integrations
 APPROVED
 Ankita
 5/7/2021 4:18:28 PM



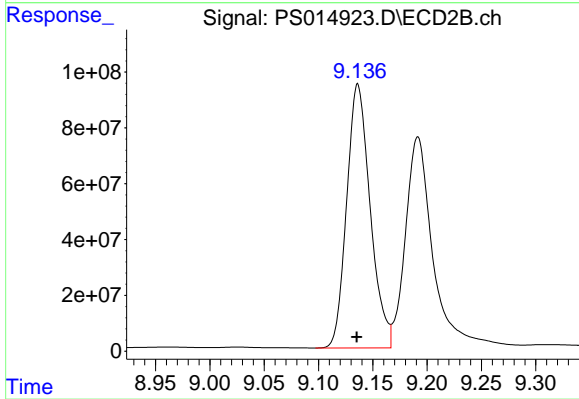
#11 2,4,5-TP (SILVEX)

R.T.: 8.755 min
 Delta R.T.: -0.002 min
 Response: 1703890703
 Conc: 623.75 ng/ml



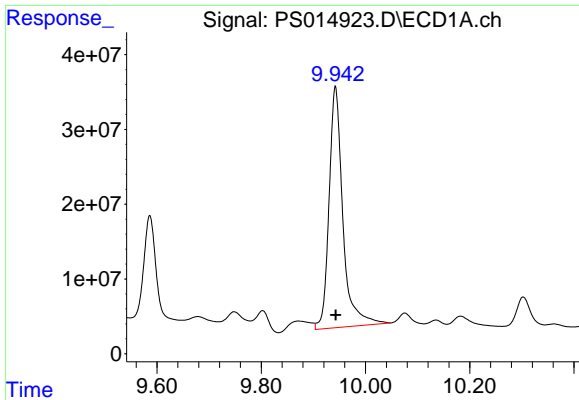
#12 2,4,5-T

R.T.: 9.393 min
 Delta R.T.: -0.003 min
 Response: 4655543206
 Conc: 565.95 ng/ml



#12 2,4,5-T

R.T.: 9.136 min
 Delta R.T.: 0.000 min
 Response: 1425889284
 Conc: 545.16 ng/ml



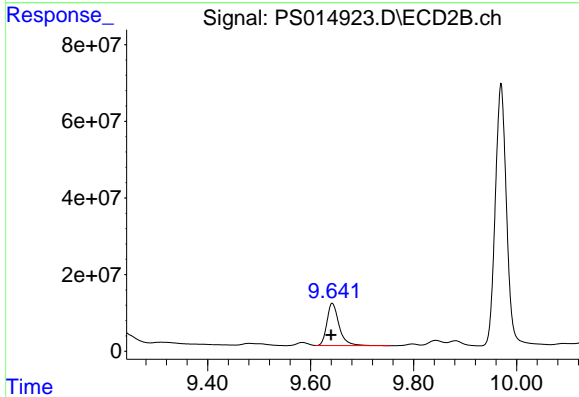
#13 2,4-DB

R.T.: 9.942 min
 Delta R.T.: 0.000 min
 Response: 592180835
 Conc: 389.14 ng/ml

Instrument :
 ECD_S
 ClientSampleId :
 PB136168BS

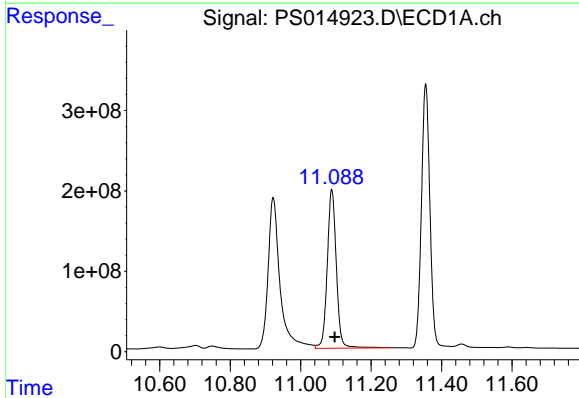
Manual Integrations
 APPROVED

Ankita
 5/7/2021 4:18:28 PM



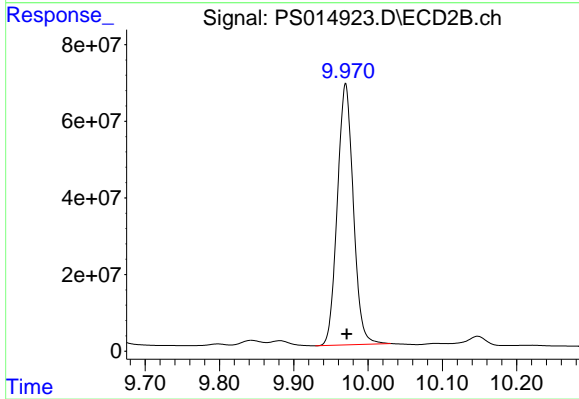
#13 2,4-DB

R.T.: 9.642 min
 Delta R.T.: 0.002 min
 Response: 179696590
 Conc: 518.05 ng/ml



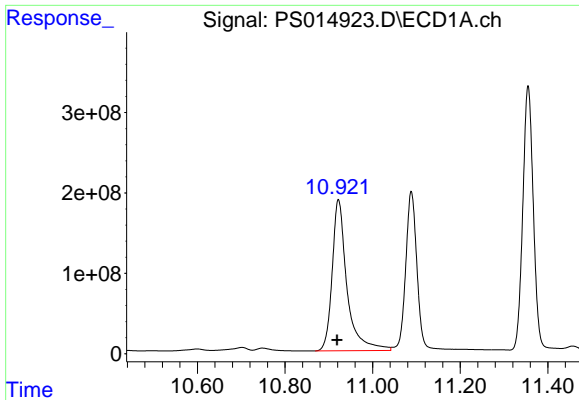
#14 DINOSEB

R.T.: 11.088 min
 Delta R.T.: -0.009 min
 Response: 3534244459
 Conc: 548.48 ng/ml



#14 DINOSEB

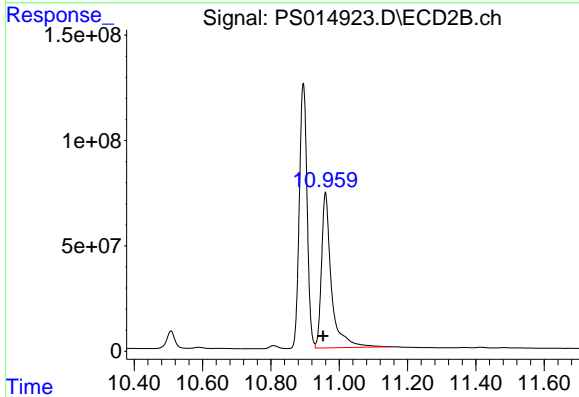
R.T.: 9.970 min
 Delta R.T.: -0.001 min
 Response: 1015944964
 Conc: 527.58 ng/ml



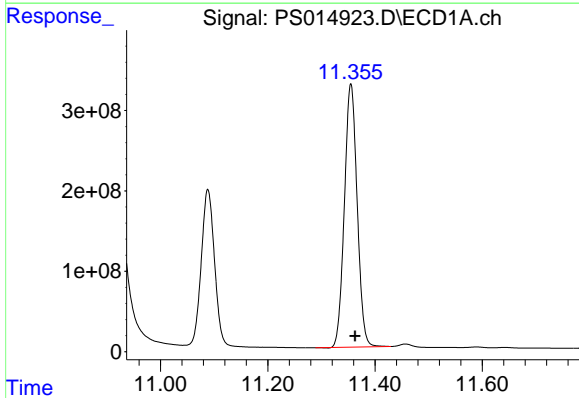
#15 Picloram
 R.T.: 10.922 min
 Delta R.T.: 0.003 min
 Response: 4422101626
 Conc: 395.24 ng/ml

Instrument :
 ECD_S
ClientSampled :
 PB136168BS

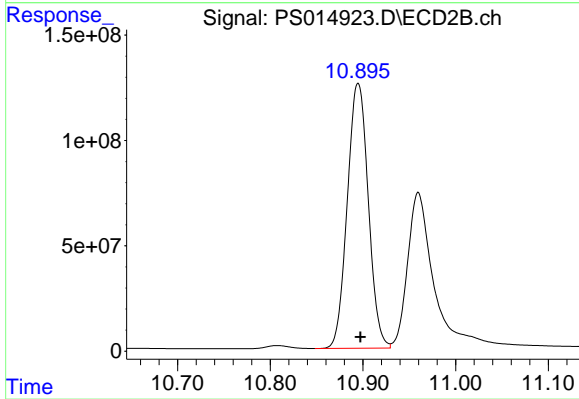
Manual Integrations
APPROVED
 Ankita
 5/7/2021 4:18:28 PM



#15 Picloram
 R.T.: 10.960 min
 Delta R.T.: 0.007 min
 Response: 1488494648
 Conc: 396.94 ng/ml



#16 DCPA
 R.T.: 11.355 min
 Delta R.T.: -0.008 min
 Response: 5404691513
 Conc: 438.62 ng/ml



#16 DCPA
 R.T.: 10.895 min
 Delta R.T.: -0.002 min
 Response: 1980987437
 Conc: 487.85 ng/ml