

Data Path : Z:\pestpcbsrv\HPCHEM1\ECD_S\Data\PS050920\
 Data File : PS010177.D
 Signal(s) : Signal #1: ECD1A.ch Signal #2: ECD2B.ch
 Acq On : 09 May 2020 07:23
 Operator : DD\AJ
 Sample : I.BLK
 Misc :
 ALS Vial : 2 Sample Multiplier: 1

Instrument :
 ECD_S
 ClientSampleId :
 I.BLK

Integration File signal 1: autoint1.e
 Integration File signal 2: autoint2.e
 Quant Time: May 11 00:51:45 2020
 Quant Method : Z:\pestpcbsrv\HPCHEM1\ECD_S\Method\PS050520.M
 Quant Title : 8080.M
 QLast Update : Tue May 05 13:43:40 2020
 Response via : Initial Calibration
 Integrator: ChemStation

Volume Inj. : 2 µl
 Signal #1 Phase : Rtx-CLPesticides Signal #2 Phase: Rtx-CLPesticides2
 Signal #1 Info : 30M x 0.32mm x0.5 Signal #2 Info : 30M x 0.32mm x 0.25µm

	Compound	RT#1	RT#2	Resp#1	Resp#2	ng/ml	ng/ml

System Monitoring Compounds							
4) S	2,4-DCAA	7.234	6.921	301.9E6	263.2E6	446.311	510.515
Target Compounds							
5) T	DICAMBA	0.000	7.090	0	2445278	N.D.	1.193
8) T	DICHLORPROP	0.000	7.742	0	5443925	N.D.	10.343
9) T	2,4-D	0.000	8.014	0	1370494	N.D.	2.165
11) T	2,4,5-TP ...	0.000	8.802	0	3586784	N.D.	1.316
12) T	2,4,5-T	0.000	9.183	0	5585029	N.D.	2.048
13) T	2,4-DB	0.000	9.693	0	1338362	N.D.	3.569
14) T	DINOSEB	0.000	10.023	0	1997261	N.D.	<MDL
15) T	Picloram	11.030	11.004	74672795	92658947	19.160	24.291 #
16) T	DCPA	0.000	10.952	0	5564172	N.D.	1.619

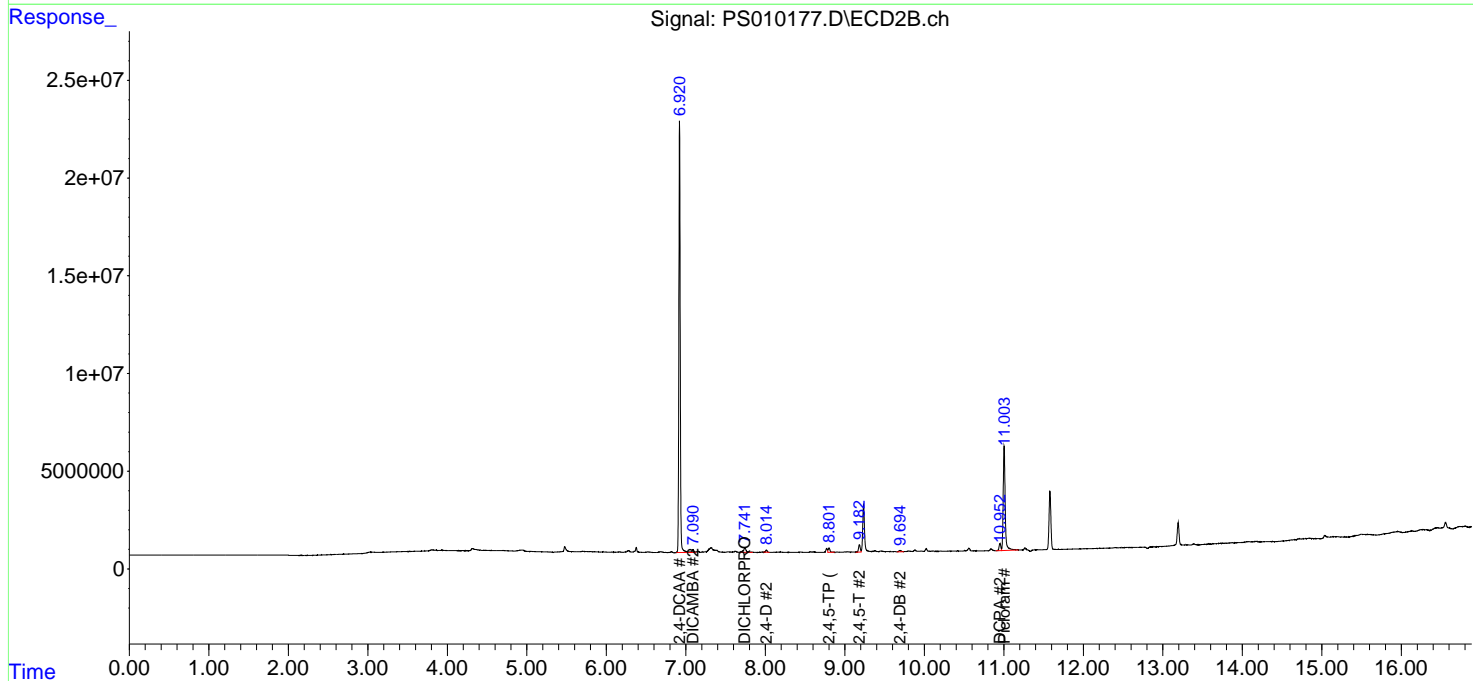
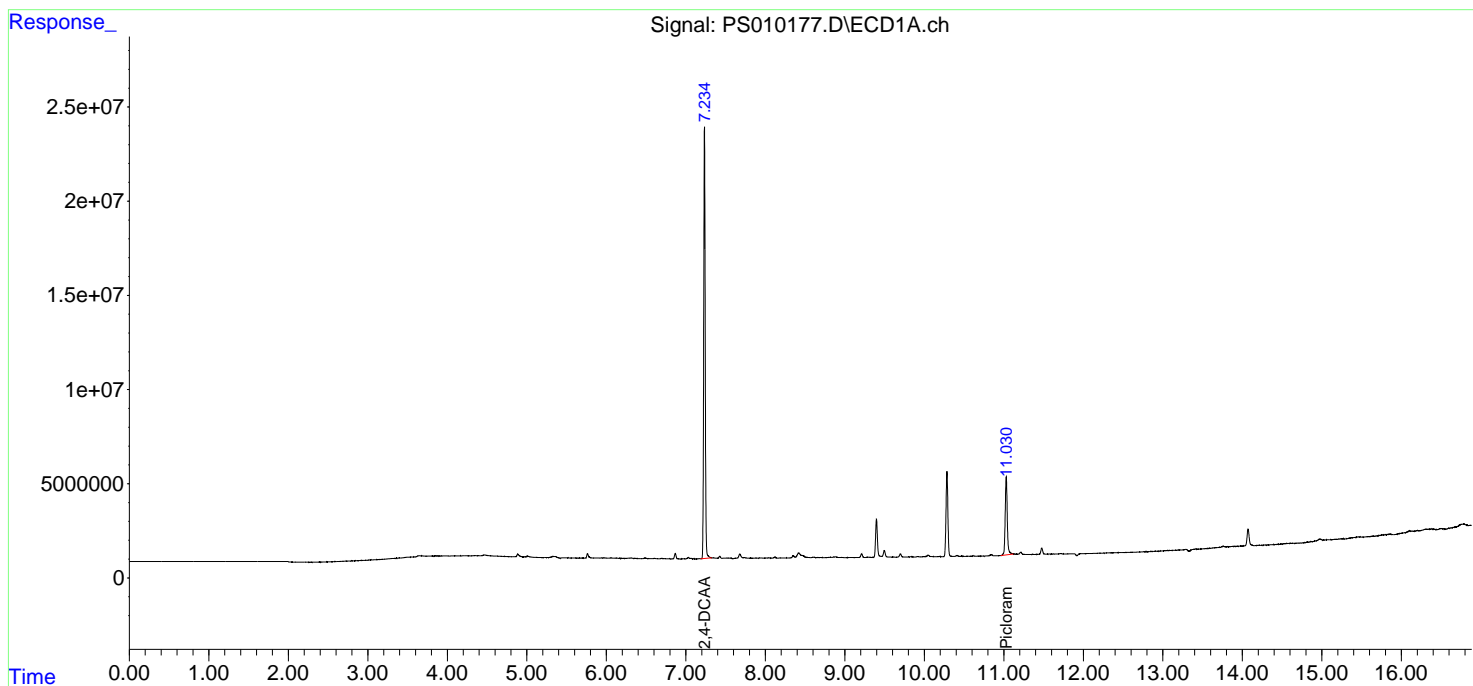
(f)=RT Delta > 1/2 Window (#)=Amounts differ by > 25% (m)=manual int.

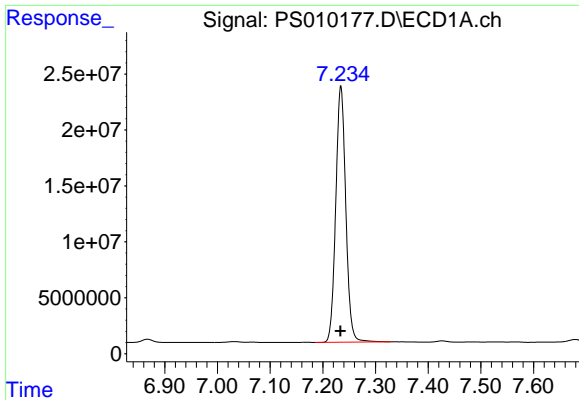
Data Path : Z:\pestpcbsrv\HPCHEM1\ECD_S\Data\PS050920\
 Data File : PS010177.D
 Signal(s) : Signal #1: ECD1A.ch Signal #2: ECD2B.ch
 Acq On : 09 May 2020 07:23
 Operator : DD\AJ
 Sample : I.BLK
 Misc :
 ALS Vial : 2 Sample Multiplier: 1

Instrument :
 ECD_S
 ClientSampleId :
 I.BLK

Integration File signal 1: autoint1.e
 Integration File signal 2: autoint2.e
 Quant Time: May 11 00:51:45 2020
 Quant Method : Z:\pestpcbsrv\HPCHEM1\ECD_S\Method\PS050520.M
 Quant Title : 8080.M
 QLast Update : Tue May 05 13:43:40 2020
 Response via : Initial Calibration
 Integrator: ChemStation

Volume Inj. : 2 µl
 Signal #1 Phase : Rtx-CLPesticides Signal #2 Phase: Rtx-CLPesticides2
 Signal #1 Info : 30M x 0.32mm x0.5 Signal #2 Info : 30M x 0.32mm x 0.25µm

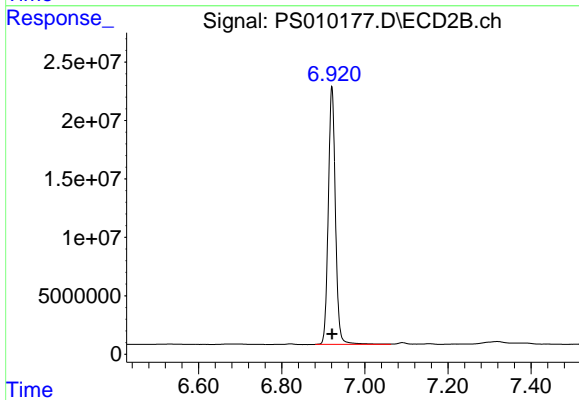




#4 2,4-DCAA

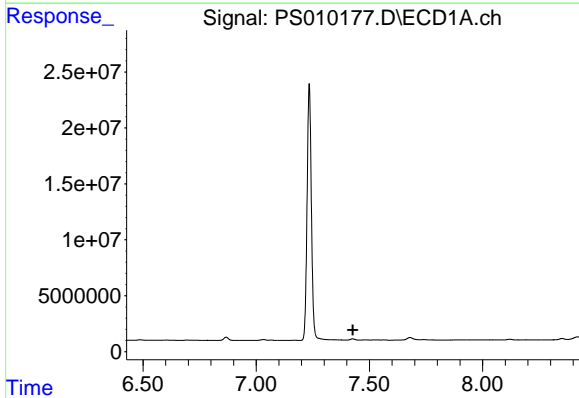
R.T.: 7.234 min
 Delta R.T.: 0.000 min
 Response: 301878867
 Conc: 446.31 ng/ml

Instrument :
 ECD_S
 ClientSampleId :
 I.BLK



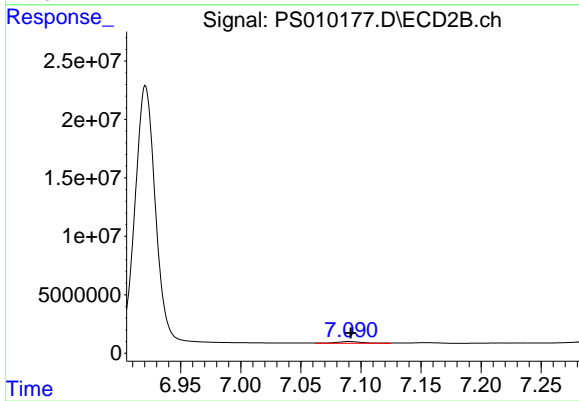
#4 2,4-DCAA

R.T.: 6.921 min
 Delta R.T.: 0.000 min
 Response: 263218307
 Conc: 510.52 ng/ml



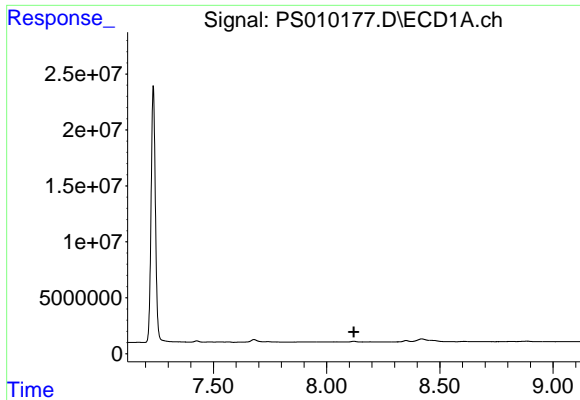
#5 DICAMBA

R.T.: 0.000 min
 Exp R.T. : 7.427 min
 Response: 0
 Conc: N.D.



#5 DICAMBA

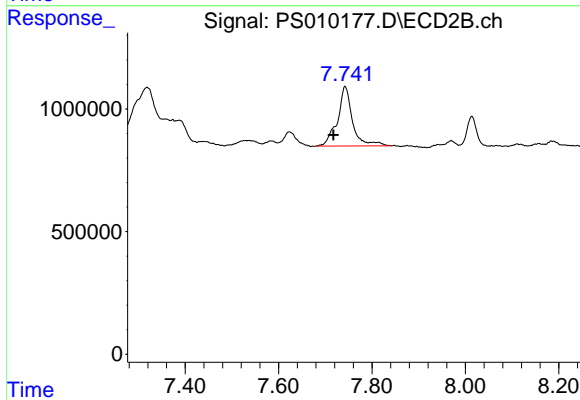
R.T.: 7.090 min
 Delta R.T.: -0.001 min
 Response: 2445278
 Conc: 1.19 ng/ml



#8 DICHLORPROP

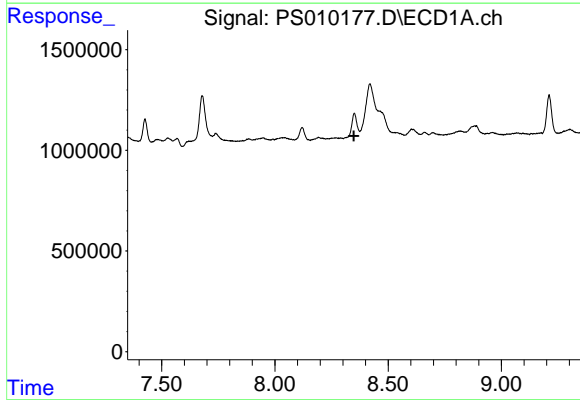
R.T.: 0.000 min
 Exp R.T. : 8.120 min
 Response: 0
 Conc: N.D.

Instrument :
 ECD_S
 ClientSampleId :
 I.BLK



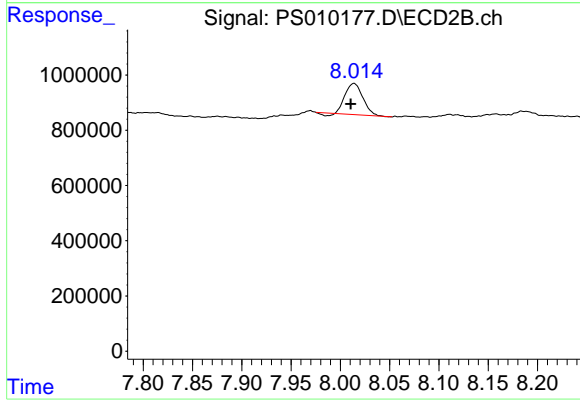
#8 DICHLORPROP

R.T.: 7.742 min
 Delta R.T.: 0.024 min
 Response: 5443925
 Conc: 10.34 ng/ml



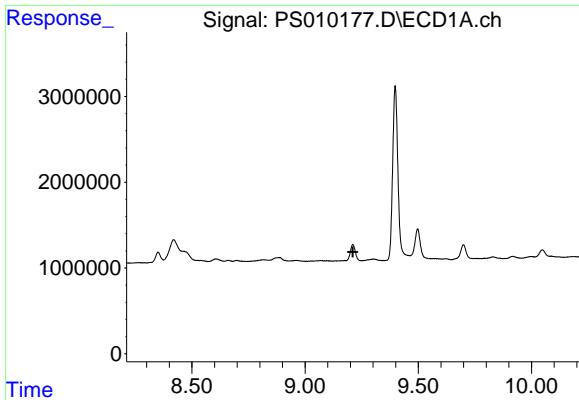
#9 2,4-D

R.T.: 0.000 min
 Exp R.T. : 8.349 min
 Response: 0
 Conc: N.D.



#9 2,4-D

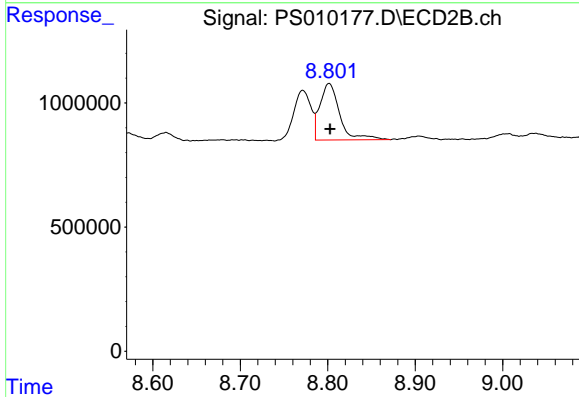
R.T.: 8.014 min
 Delta R.T.: 0.003 min
 Response: 1370494
 Conc: 2.17 ng/ml



#11 2,4,5-TP (SILVEX)

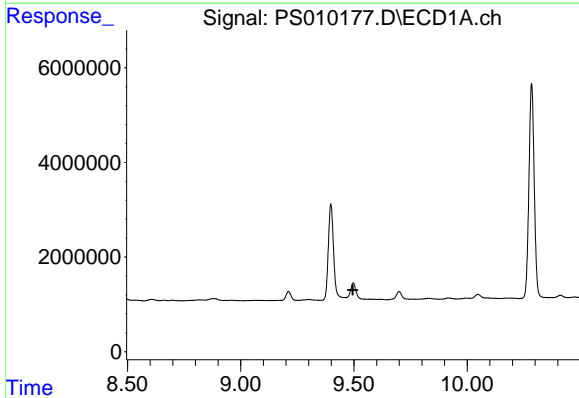
R.T.: 0.000 min
 Exp R.T. : 9.211 min
 Response: 0
 Conc: N.D.

Instrument :
 ECD_S
 ClientSampleId :
 I.BLK



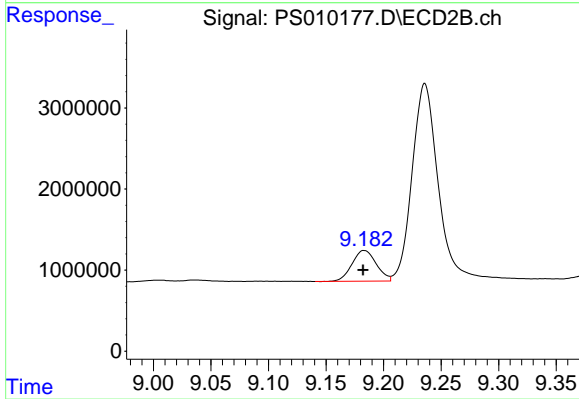
#11 2,4,5-TP (SILVEX)

R.T.: 8.802 min
 Delta R.T.: -0.001 min
 Response: 3586784
 Conc: 1.32 ng/ml



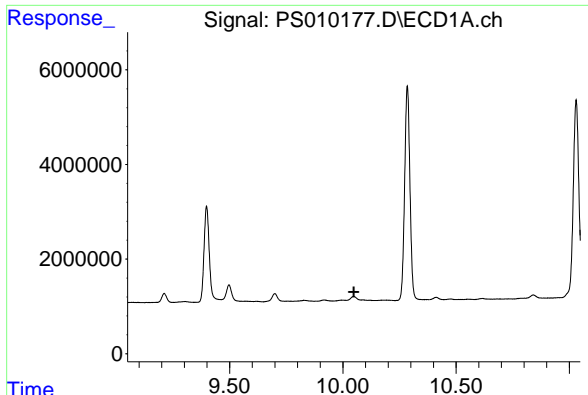
#12 2,4,5-T

R.T.: 0.000 min
 Exp R.T. : 9.496 min
 Response: 0
 Conc: N.D.



#12 2,4,5-T

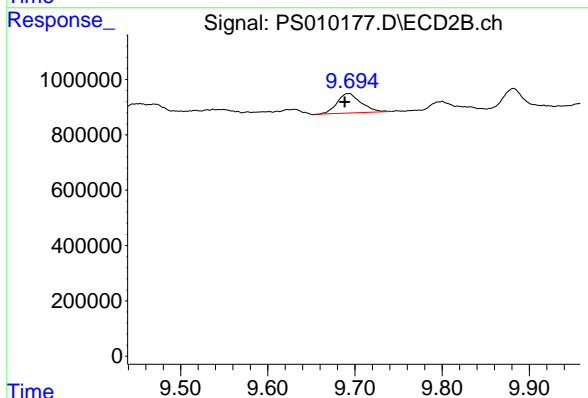
R.T.: 9.183 min
 Delta R.T.: 0.001 min
 Response: 5585029
 Conc: 2.05 ng/ml



#13 2,4-DB

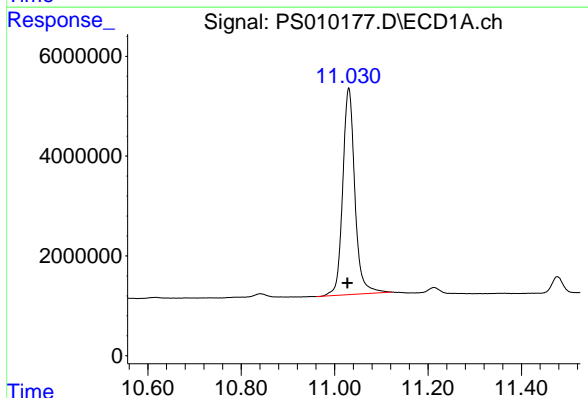
R.T.: 0.000 min
 Exp R.T.: 10.049 min
 Response: 0
 Conc: N.D.

Instrument :
 ECD_S
 ClientSampleId :
 I.BLK



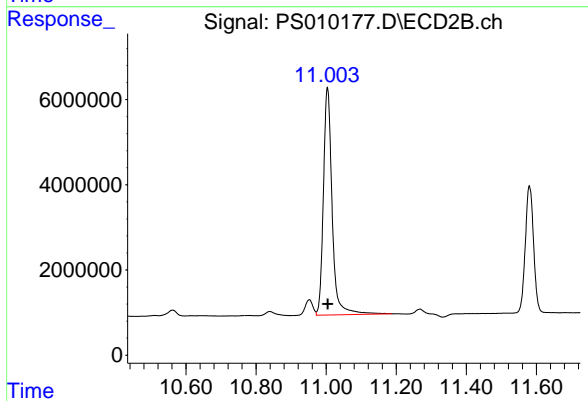
#13 2,4-DB

R.T.: 9.693 min
 Delta R.T.: 0.005 min
 Response: 1338362
 Conc: 3.57 ng/ml



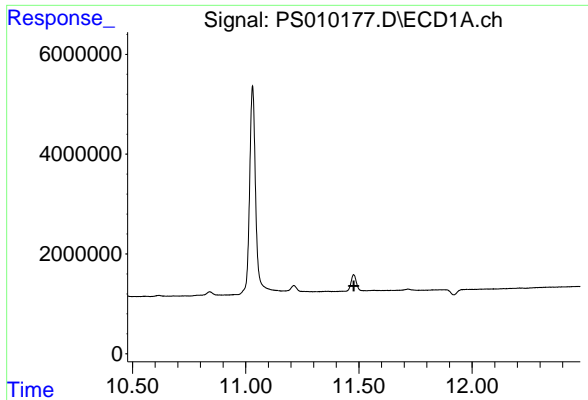
#15 Picloram

R.T.: 11.030 min
 Delta R.T.: 0.003 min
 Response: 74672795
 Conc: 19.16 ng/ml



#15 Picloram

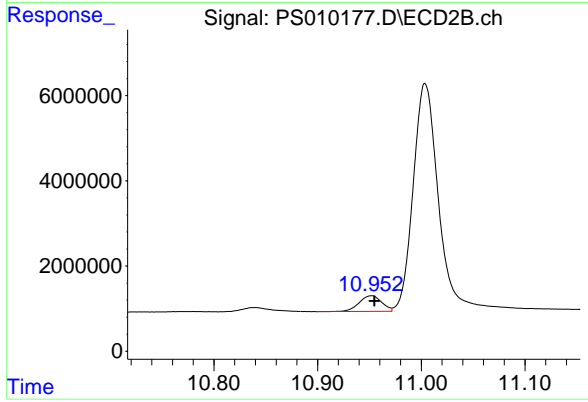
R.T.: 11.004 min
 Delta R.T.: -0.001 min
 Response: 92658947
 Conc: 24.29 ng/ml



#16 DCPA

R.T.: 0.000 min
Exp R.T.: 11.478 min
Response: 0
Conc: N.D.

Instrument :
ECD_S
ClientSampleId :
I.BLK



#16 DCPA

R.T.: 10.952 min
Delta R.T.: -0.003 min
Response: 5564172
Conc: 1.62 ng/ml