

Data Path : Z:\pestpcbsrv\HPCHEM1\ECD_S\Data\PS050920\
 Data File : PS010178.D
 Signal(s) : Signal #1: ECD1A.ch Signal #2: ECD2B.ch
 Acq On : 09 May 2020 07:46
 Operator : DD\AJ
 Sample : HSTDCCC750
 Misc :
 ALS Vial : 3 Sample Multiplier: 1

Instrument :
 ECD_S
 ClientSampleId :
 HSTDCCC750

Integration File signal 1: autoint1.e
 Integration File signal 2: autoint2.e
 Quant Time: May 11 00:52:05 2020
 Quant Method : Z:\pestpcbsrv\HPCHEM1\ECD_S\Method\PS050520.M
 Quant Title : 8080.M
 QLast Update : Tue May 05 13:43:40 2020
 Response via : Initial Calibration
 Integrator: ChemStation

Volume Inj. : 2 µl
 Signal #1 Phase : Rtx-CLPesticides Signal #2 Phase: Rtx-CLPesticides2
 Signal #1 Info : 30M x 0.32mm x0.5 Signal #2 Info : 30M x 0.32mm x 0.25µm

	Compound	RT#1	RT#2	Resp#1	Resp#2	ng/ml	ng/ml

System Monitoring Compounds							
4) S	2,4-DCAA	7.234	6.921	554.0E6	418.3E6	819.081	811.214
Target Compounds							
1) T	Dalapon	3.040	2.623	565.7E6	514.6E6	694.458	679.295
2) T	3,5-DICHL...	6.444	6.070	691.6E6	574.0E6	758.460	743.533
3) T	4-Nitroph...	7.062	6.524	231.5E6	230.2E6	733.015	716.738
5) T	DICAMBA	7.426	7.090	1986.7E6	1564.7E6	777.983	763.242
6) T	MCP P	7.597	7.189	158.3E6	131.9E6	77.159	77.151
7) T	MCPA	7.747	7.404	221.4E6	188.4E6	76.037	75.623
8) T	DICHLORPROP	8.119	7.717	478.4E6	401.1E6	764.965	762.089
9) T	2,4-D	8.348	8.010	509.7E6	478.0E6	774.673	755.178
10) T	Pentachlo...	8.661	8.442	6622.8E6	4813.0E6	775.911	751.232
11) T	2,4,5-TP ...	9.210	8.802	2684.4E6	2113.0E6	781.813	775.248
12) T	2,4,5-T	9.495	9.181	2561.1E6	2115.3E6	783.826	775.661
13) T	2,4-DB	10.048	9.688	356.6E6	286.3E6	782.990	763.310
14) T	DINOSEB	11.212	10.022	1915.2E6	1551.4E6	765.930	760.873
15) T	Picloram	11.028	11.002	3008.7E6	2844.5E6	771.997	745.709
16) T	DCPA	11.477	10.952	3339.5E6	2679.2E6	779.476	779.385

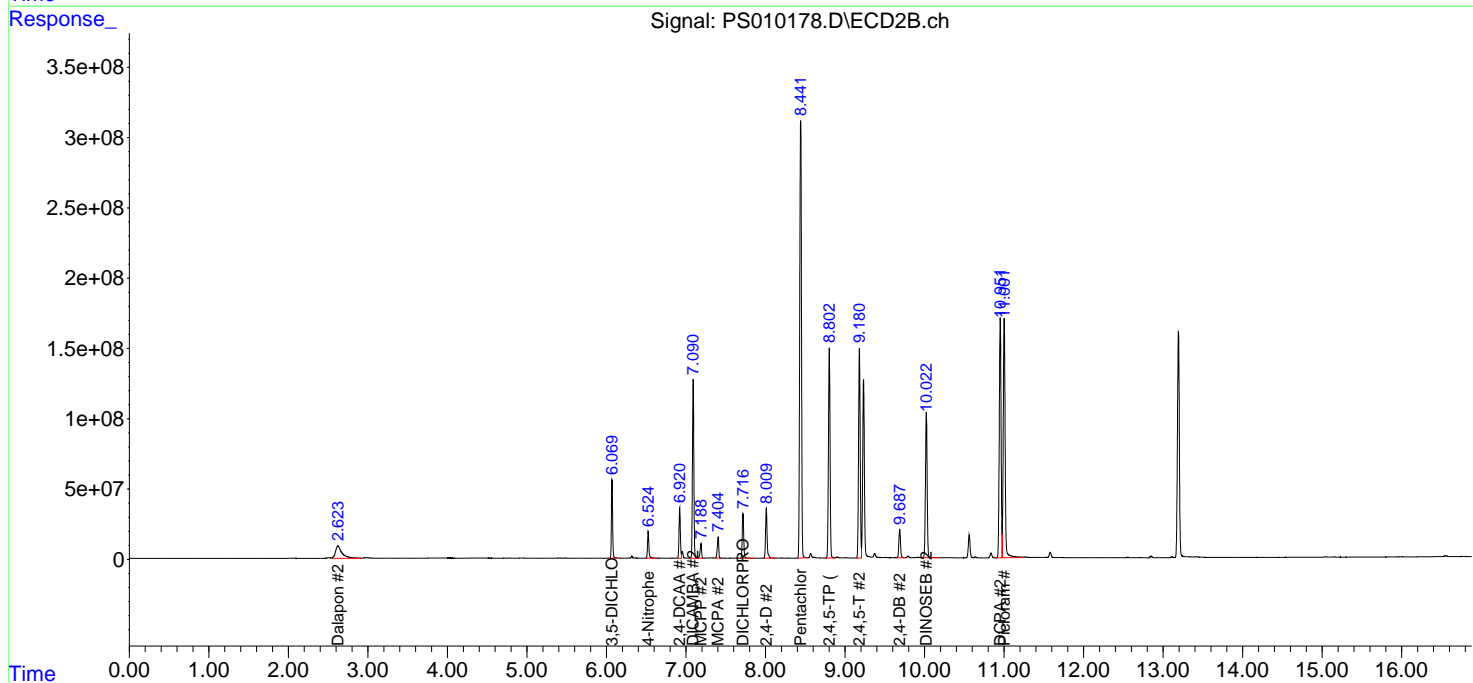
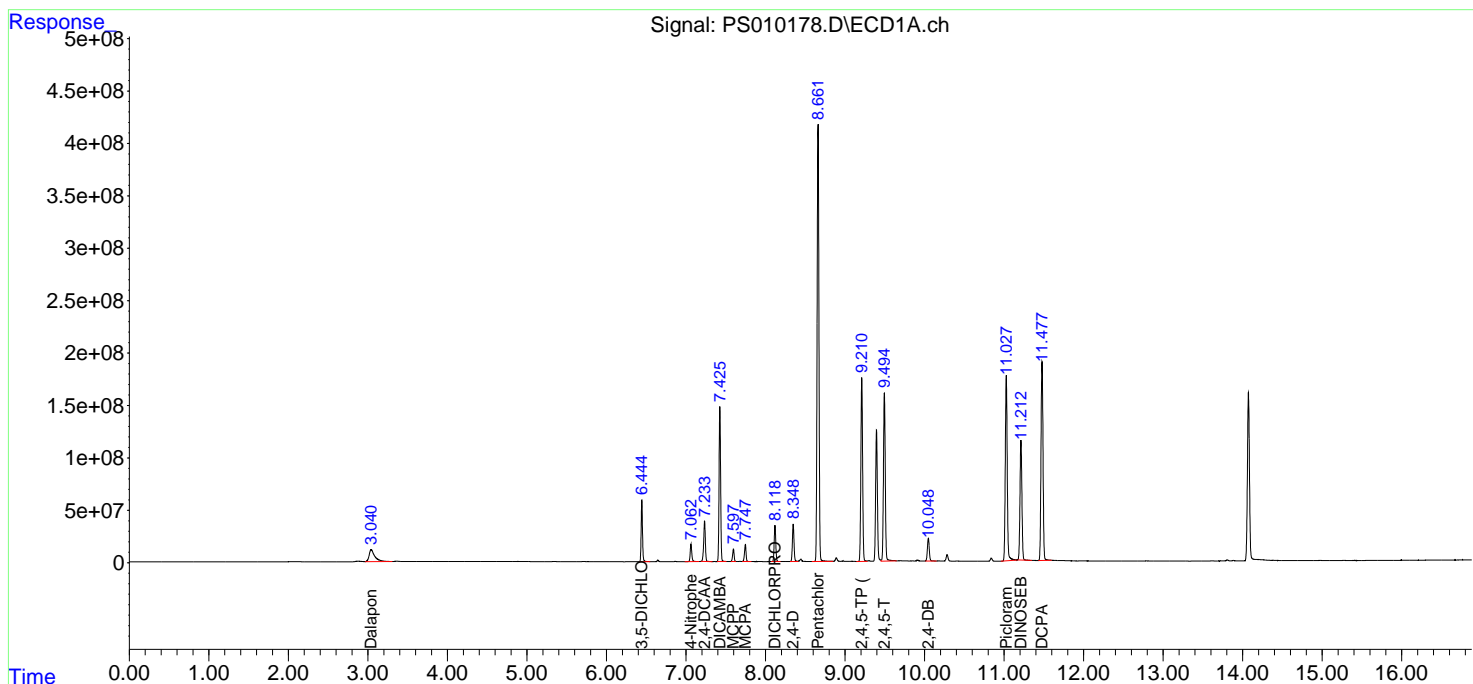
(f)=RT Delta > 1/2 Window (#)=Amounts differ by > 25% (m)=manual int.

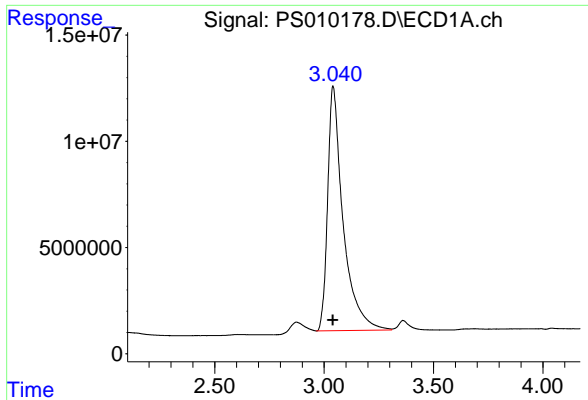
Data Path : Z:\pestpcbsrv\HPCHEM1\ECD_S\Data\PS050920\
 Data File : PS010178.D
 Signal(s) : Signal #1: ECD1A.ch Signal #2: ECD2B.ch
 Acq On : 09 May 2020 07:46
 Operator : DD\AJ
 Sample : HSTDCCC750
 Misc :
 ALS Vial : 3 Sample Multiplier: 1

Instrument :
 ECD_S
 ClientSampleId :
 HSTDCCC750

Integration File signal 1: autoint1.e
 Integration File signal 2: autoint2.e
 Quant Time: May 11 00:52:05 2020
 Quant Method : Z:\pestpcbsrv\HPCHEM1\ECD_S\Method\PS050520.M
 Quant Title : 8080.M
 QLast Update : Tue May 05 13:43:40 2020
 Response via : Initial Calibration
 Integrator: ChemStation

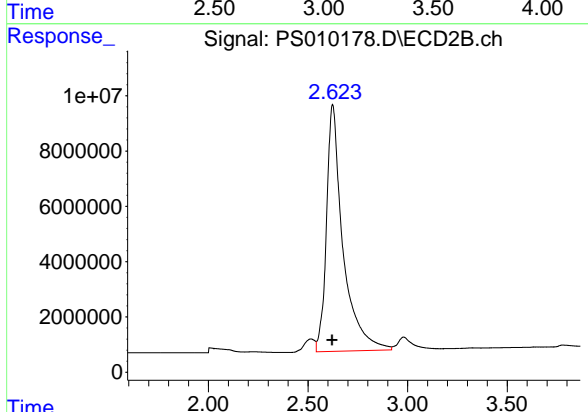
Volume Inj. : 2 µl
 Signal #1 Phase : Rtx-CLPesticides Signal #2 Phase: Rtx-CLPesticides2
 Signal #1 Info : 30M x 0.32mm x0.5 Signal #2 Info : 30M x 0.32mm x 0.25µm



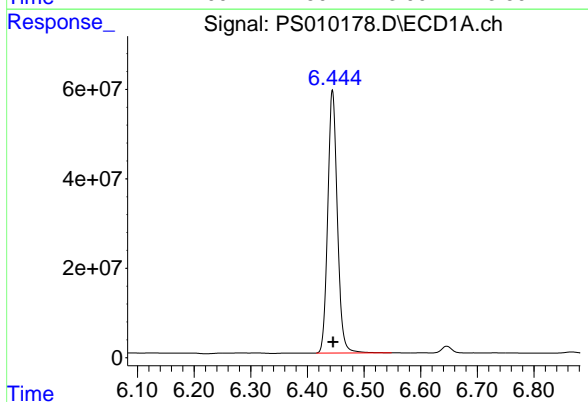


#1 Dalapon
 R.T.: 3.040 min
 Delta R.T.: 0.000 min
 Response: 565695907
 Conc: 694.46 ng/ml

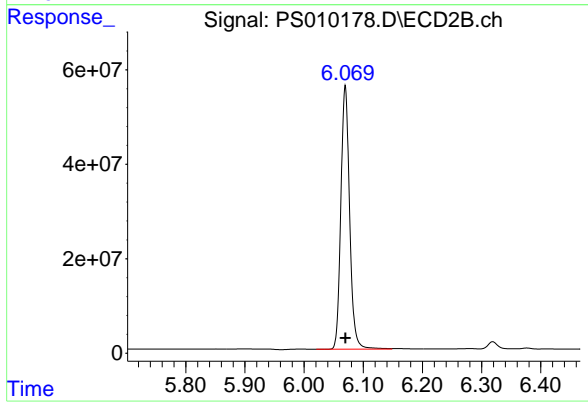
Instrument :
 ECD_S
 ClientSampleId :
 HSTDCCC750



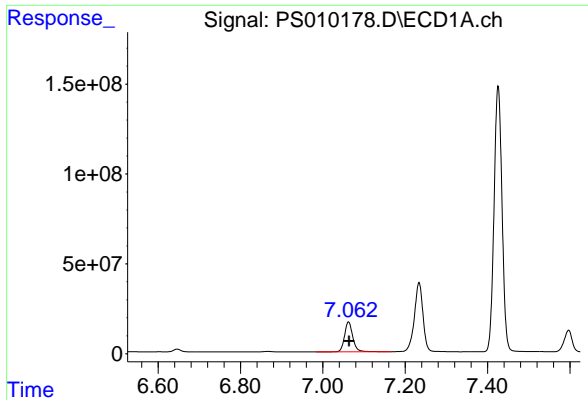
#1 Dalapon
 R.T.: 2.623 min
 Delta R.T.: 0.002 min
 Response: 514636866
 Conc: 679.29 ng/ml



#2 3,5-DICHLOROBENZOIC ACID
 R.T.: 6.444 min
 Delta R.T.: 0.000 min
 Response: 691586400
 Conc: 758.46 ng/ml



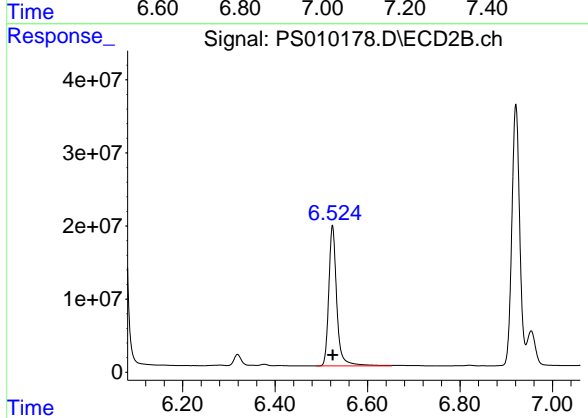
#2 3,5-DICHLOROBENZOIC ACID
 R.T.: 6.070 min
 Delta R.T.: 0.000 min
 Response: 573979510
 Conc: 743.53 ng/ml



#3 4-Nitrophenol

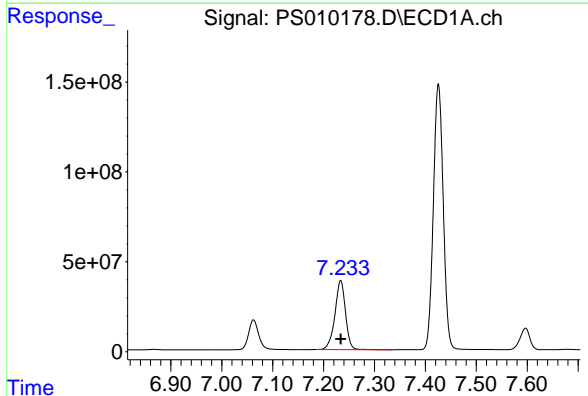
R.T.: 7.062 min
 Delta R.T.: 0.000 min
 Response: 231495769
 Conc: 733.02 ng/ml

Instrument :
 ECD_S
 ClientSampleId :
 HSTDCCC750



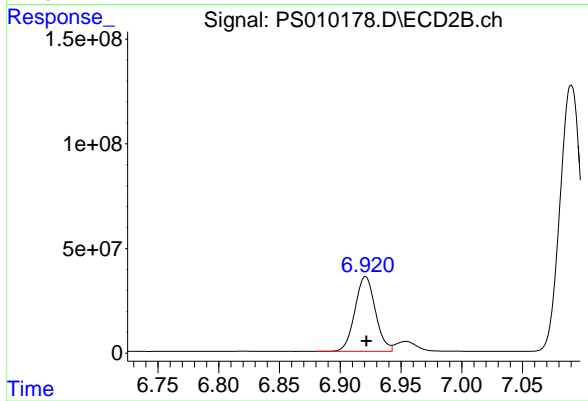
#3 4-Nitrophenol

R.T.: 6.524 min
 Delta R.T.: 0.000 min
 Response: 230170041
 Conc: 716.74 ng/ml



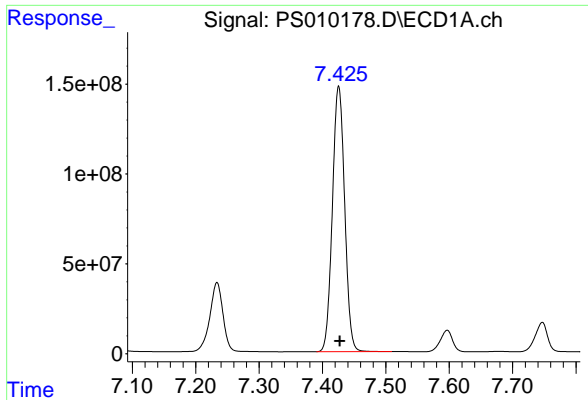
#4 2,4-DCAA

R.T.: 7.234 min
 Delta R.T.: 0.000 min
 Response: 554015621
 Conc: 819.08 ng/ml



#4 2,4-DCAA

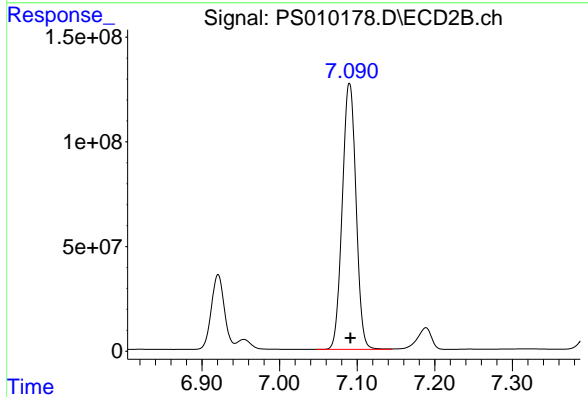
R.T.: 6.921 min
 Delta R.T.: 0.000 min
 Response: 418256272
 Conc: 811.21 ng/ml



#5 DICAMBA

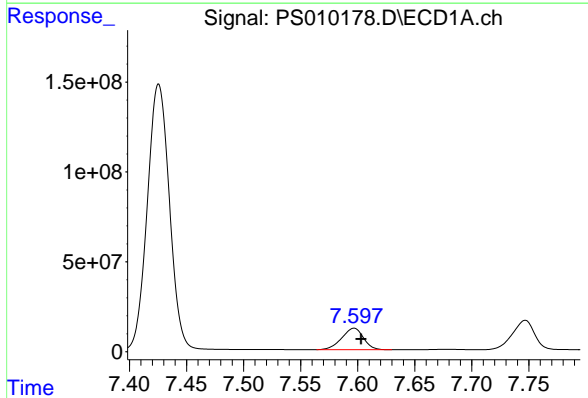
R.T.: 7.426 min
 Delta R.T.: -0.001 min
 Response: 1986678967
 Conc: 777.98 ng/ml

Instrument :
 ECD_S
 ClientSampleId :
 HSTDCCC750



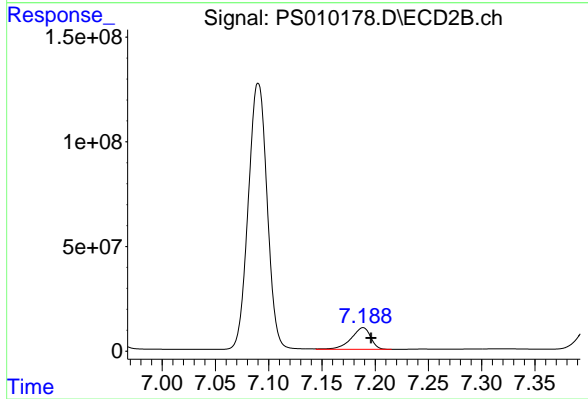
#5 DICAMBA

R.T.: 7.090 min
 Delta R.T.: -0.001 min
 Response: 1564710519
 Conc: 763.24 ng/ml



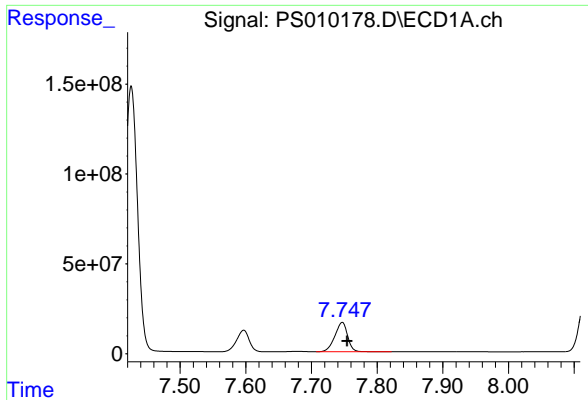
#6 MCP

R.T.: 7.597 min
 Delta R.T.: -0.006 min
 Response: 158259408
 Conc: 77.16 ug/ml



#6 MCP

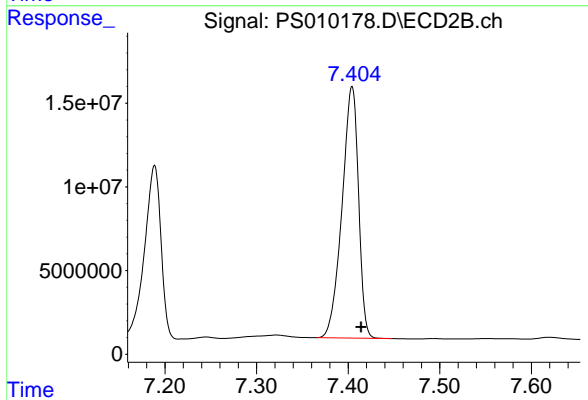
R.T.: 7.189 min
 Delta R.T.: -0.007 min
 Response: 131902310
 Conc: 77.15 ug/ml



#7 MCPA

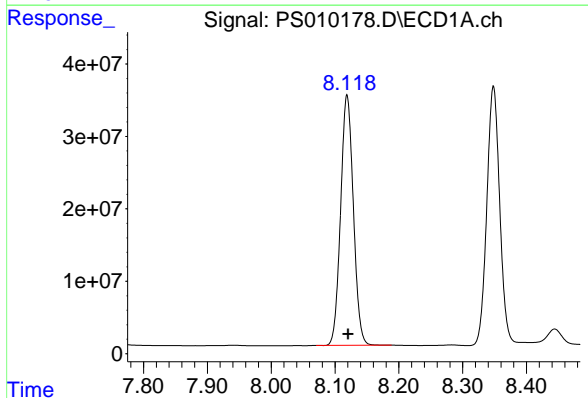
R.T.: 7.747 min
 Delta R.T.: -0.008 min
 Response: 221392133
 Conc: 76.04 ug/ml

Instrument :
 ECD_S
 ClientSampleId :
 HSTDCCC750



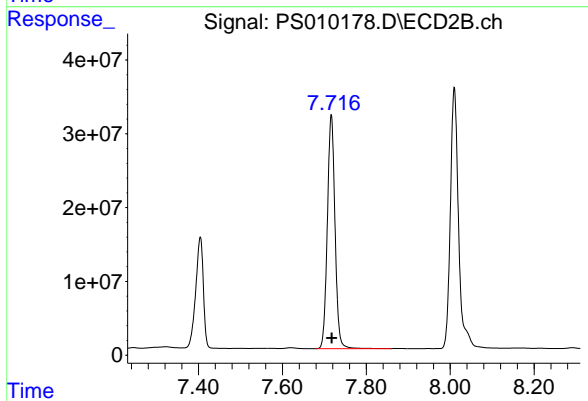
#7 MCPA

R.T.: 7.404 min
 Delta R.T.: -0.010 min
 Response: 188373086
 Conc: 75.62 ug/ml



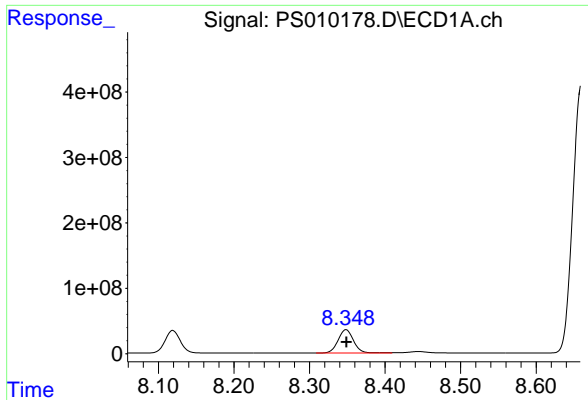
#8 DICHLORPROP

R.T.: 8.119 min
 Delta R.T.: -0.002 min
 Response: 478445546
 Conc: 764.96 ng/ml



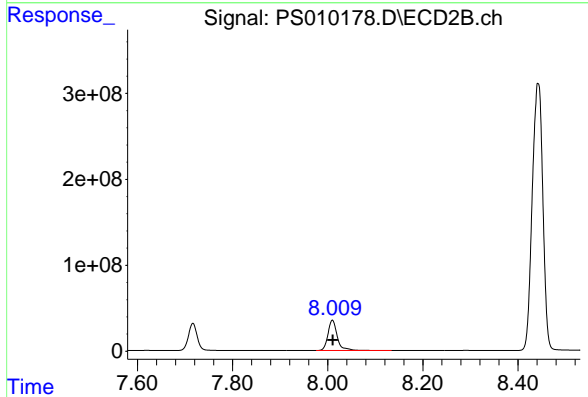
#8 DICHLORPROP

R.T.: 7.717 min
 Delta R.T.: -0.001 min
 Response: 401126750
 Conc: 762.09 ng/ml

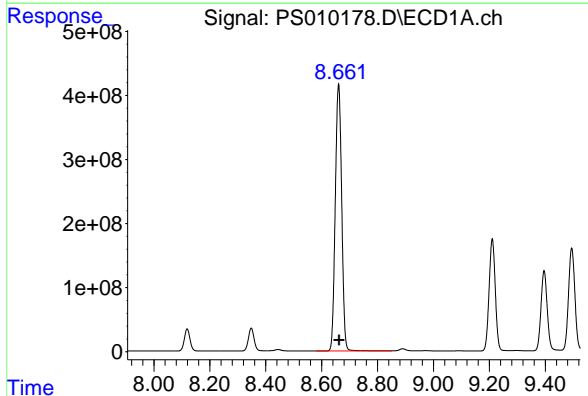


#9 2,4-D
 R.T.: 8.348 min
 Delta R.T.: 0.000 min
 Response: 509743539
 Conc: 774.67 ng/ml

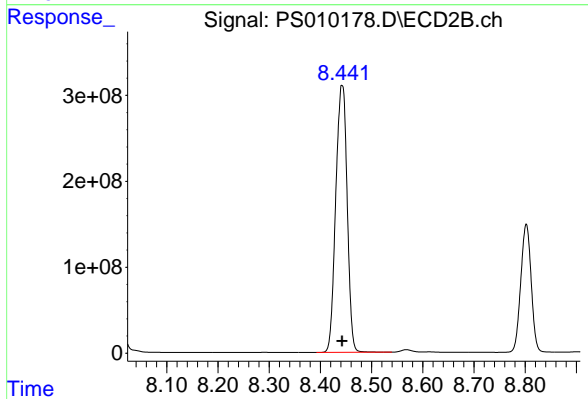
Instrument :
 ECD_S
 ClientSampleId :
 HSTDCCC750



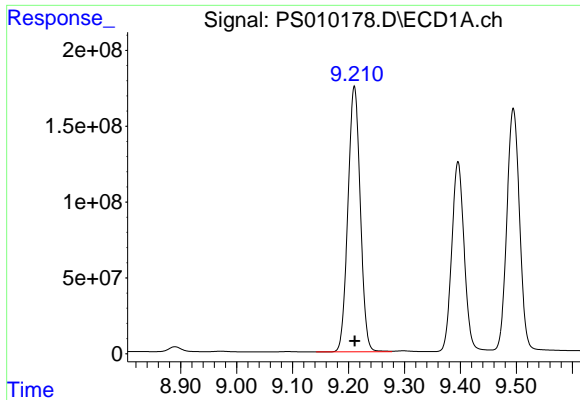
#9 2,4-D
 R.T.: 8.010 min
 Delta R.T.: 0.000 min
 Response: 477951000
 Conc: 755.18 ng/ml



#10 Pentachlorophenol
 R.T.: 8.661 min
 Delta R.T.: -0.002 min
 Response: 662275547
 Conc: 775.91 ng/ml

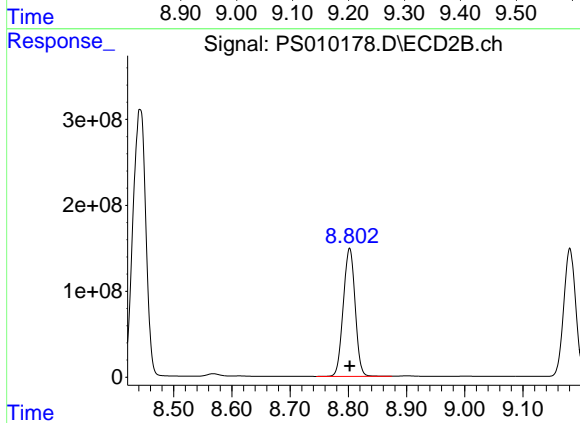


#10 Pentachlorophenol
 R.T.: 8.442 min
 Delta R.T.: 0.000 min
 Response: 4813007029
 Conc: 751.23 ng/ml

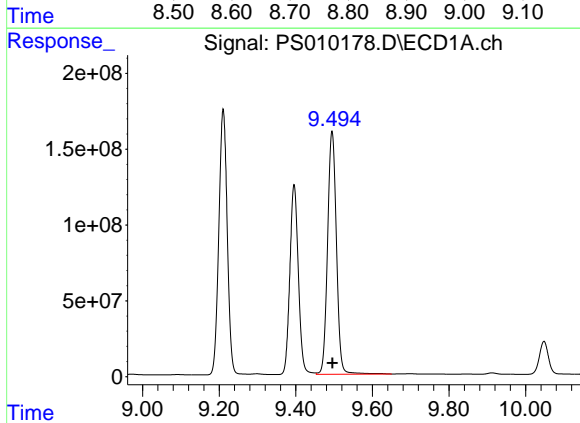


#11 2,4,5-TP (SILVEX)
 R.T.: 9.210 min
 Delta R.T.: -0.001 min
 Response: 2684444147
 Conc: 781.81 ng/ml

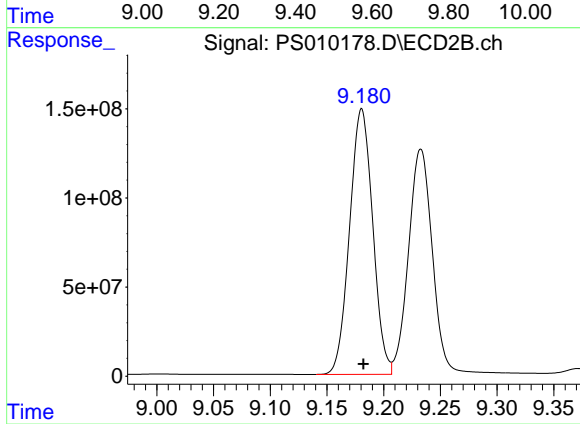
Instrument :
 ECD_S
 ClientSampleId :
 HSTDCCC750



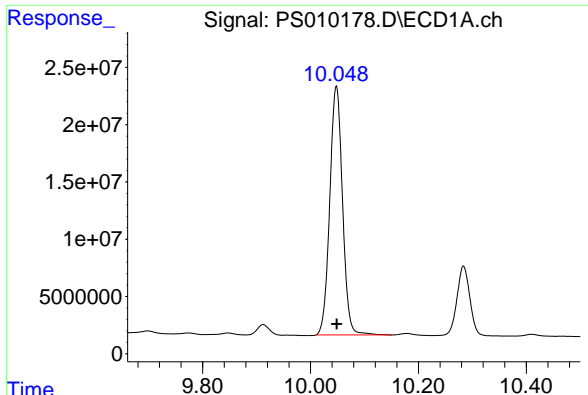
#11 2,4,5-TP (SILVEX)
 R.T.: 8.802 min
 Delta R.T.: 0.000 min
 Response: 2112995370
 Conc: 775.25 ng/ml



#12 2,4,5-T
 R.T.: 9.495 min
 Delta R.T.: -0.001 min
 Response: 2561092786
 Conc: 783.83 ng/ml



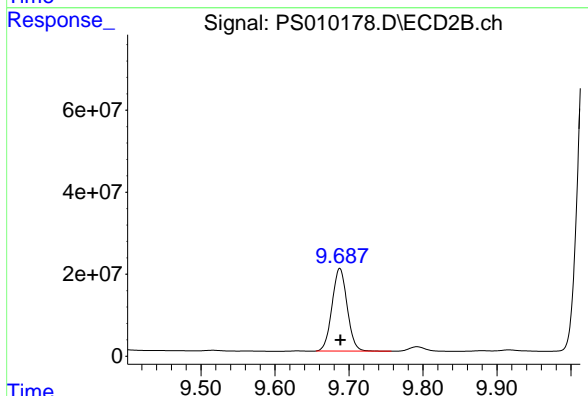
#12 2,4,5-T
 R.T.: 9.181 min
 Delta R.T.: -0.001 min
 Response: 2115251458
 Conc: 775.66 ng/ml



#13 2,4-DB

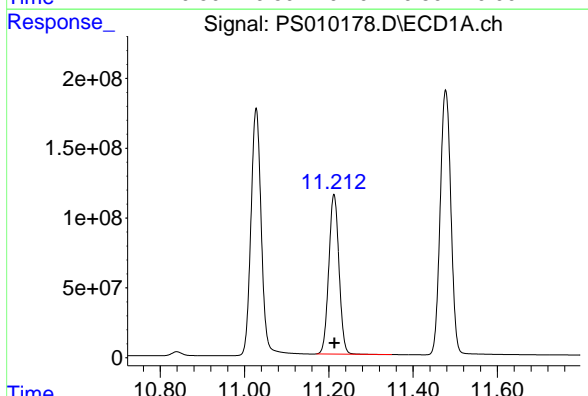
R.T.: 10.048 min
 Delta R.T.: 0.000 min
 Response: 356595263
 Conc: 782.99 ng/ml

Instrument :
 ECD_S
 ClientSampleId :
 HSTDCCC750



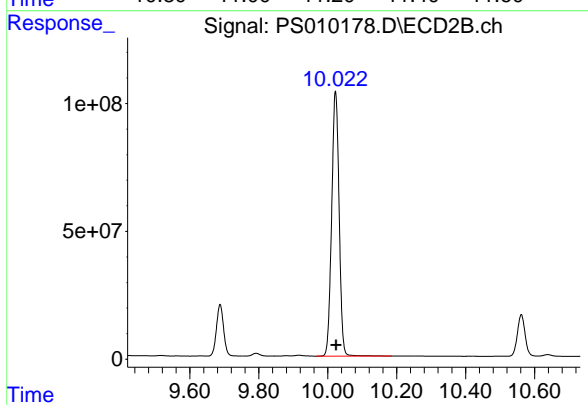
#13 2,4-DB

R.T.: 9.688 min
 Delta R.T.: 0.000 min
 Response: 286265603
 Conc: 763.31 ng/ml



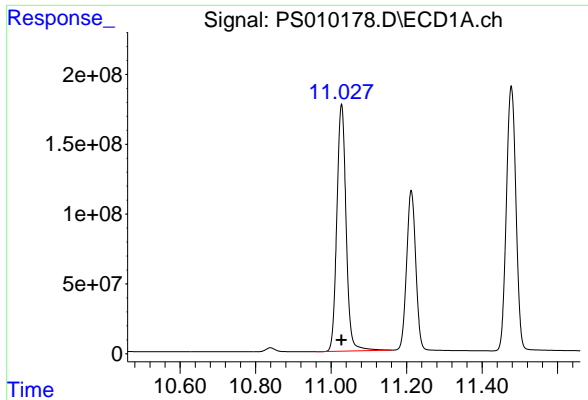
#14 DINOSEB

R.T.: 11.212 min
 Delta R.T.: 0.000 min
 Response: 1915201022
 Conc: 765.93 ng/ml



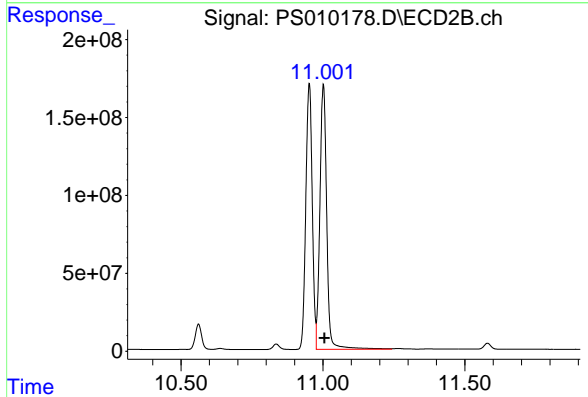
#14 DINOSEB

R.T.: 10.022 min
 Delta R.T.: -0.002 min
 Response: 1551444989
 Conc: 760.87 ng/ml

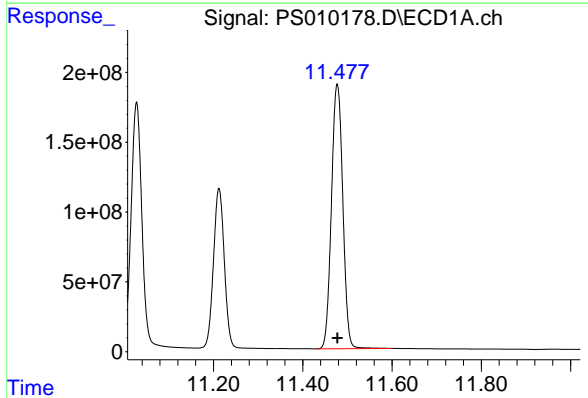


#15 Picloram
 R.T.: 11.028 min
 Delta R.T.: 0.000 min
 Response: 3008706351
 Conc: 772.00 ng/ml

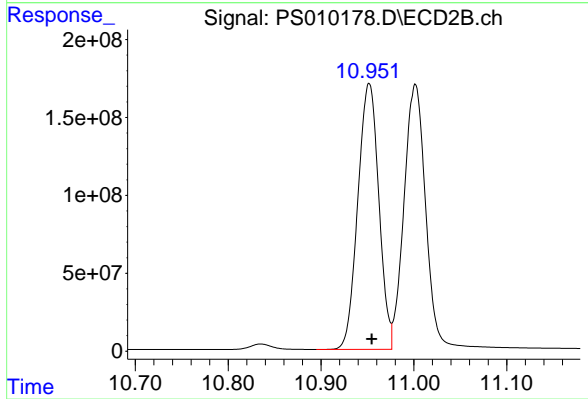
Instrument :
 ECD_S
 ClientSampleId :
 HSTDCCC750



#15 Picloram
 R.T.: 11.002 min
 Delta R.T.: -0.003 min
 Response: 2844548961
 Conc: 745.71 ng/ml



#16 DCPA
 R.T.: 11.477 min
 Delta R.T.: 0.000 min
 Response: 3339462624
 Conc: 779.48 ng/ml



#16 DCPA
 R.T.: 10.952 min
 Delta R.T.: -0.003 min
 Response: 2679204859
 Conc: 779.38 ng/ml