

Data Path : Z:\pestpcbsrv\HPCHEM1\ECD\_S\Data\PS050924\  
 Data File : PS026704.D  
 Signal(s) : Signal #1: ECD1A.ch Signal #2: ECD2B.ch  
 Acq On : 09 May 2024 15:27  
 Operator : AR\AJ  
 Sample : PB160776BS  
 Misc :  
 ALS Vial : 6 Sample Multiplier: 1

Instrument :  
 ECD\_S  
 ClientSampleId :  
 PB160776BS

Integration File signal 1: autoint1.e  
 Integration File signal 2: autoint2.e  
 Quant Time: May 10 05:23:03 2024  
 Quant Method : Z:\pestpcbsrv\HPCHEM1\ECD\_S\Method\PS050624.M  
 Quant Title : 8080.M  
 QLast Update : Mon May 06 13:55:47 2024  
 Response via : Initial Calibration  
 Integrator: ChemStation

Volume Inj. : 2 µl  
 Signal #1 Phase : Rtx-CLPesticides Signal #2 Phase: Rtx-CLPesticides2  
 Signal #1 Info : 30M x 0.32mm x0.5 Signal #2 Info : 30M x 0.32mm x 0.25µm

	Compound	RT#1	RT#2	Resp#1	Resp#2	ng/ml	ng/ml
-----							
System Monitoring Compounds							
4) S	2,4-DCAA	7.272	7.776	1364.3E6	928.7E6	548.617	556.950
Target Compounds							
1) T	Dalapon	2.657	2.705	1722.5E6	1436.5E6	470.970	489.988
2) T	3,5-DICHL...	6.438	6.723	1766.5E6	1266.9E6	513.604	517.865
3) T	4-Nitroph...	7.073	7.301	821.3E6	578.3E6	509.790	508.527
5) T	DICAMBA	7.460	7.977	5308.6E6	3872.5E6	517.624	523.033
6) T	MCP P	7.640	8.077	374.8E6	252.3E6	50.437	49.087
7) T	MCPA	7.789	8.322	536.0E6	361.6E6	48.424	48.352
8) T	DICHLORPROP	8.166	8.694	1542.6E6	990.9E6	514.769	516.423
9) T	2,4-D	8.398	9.025	1702.3E6	1077.8E6	517.125	523.104
10) T	Pentachlo...	8.695	9.555	22028.2E6	15099.0E6	537.939	552.469
11) T	2,4,5-TP ...	9.275	9.930	8520.9E6	5996.0E6	511.952	543.354
12) T	2,4,5-T	9.567	10.351	8786.0E6	5941.6E6	515.518	548.515
13) T	2,4-DB	10.142	10.916	1213.5E6	712.9E6	511.857	524.415
14) T	DINOSEB	11.354	11.296	5547.1E6	3879.3E6	540.236	564.740
15) T	Picloram	11.162	12.395	11138.5E6	8653.2E6	498.655	539.960
16) T	DCPA	11.645	12.341	9997.2E6	7462.9E6	531.034	564.439

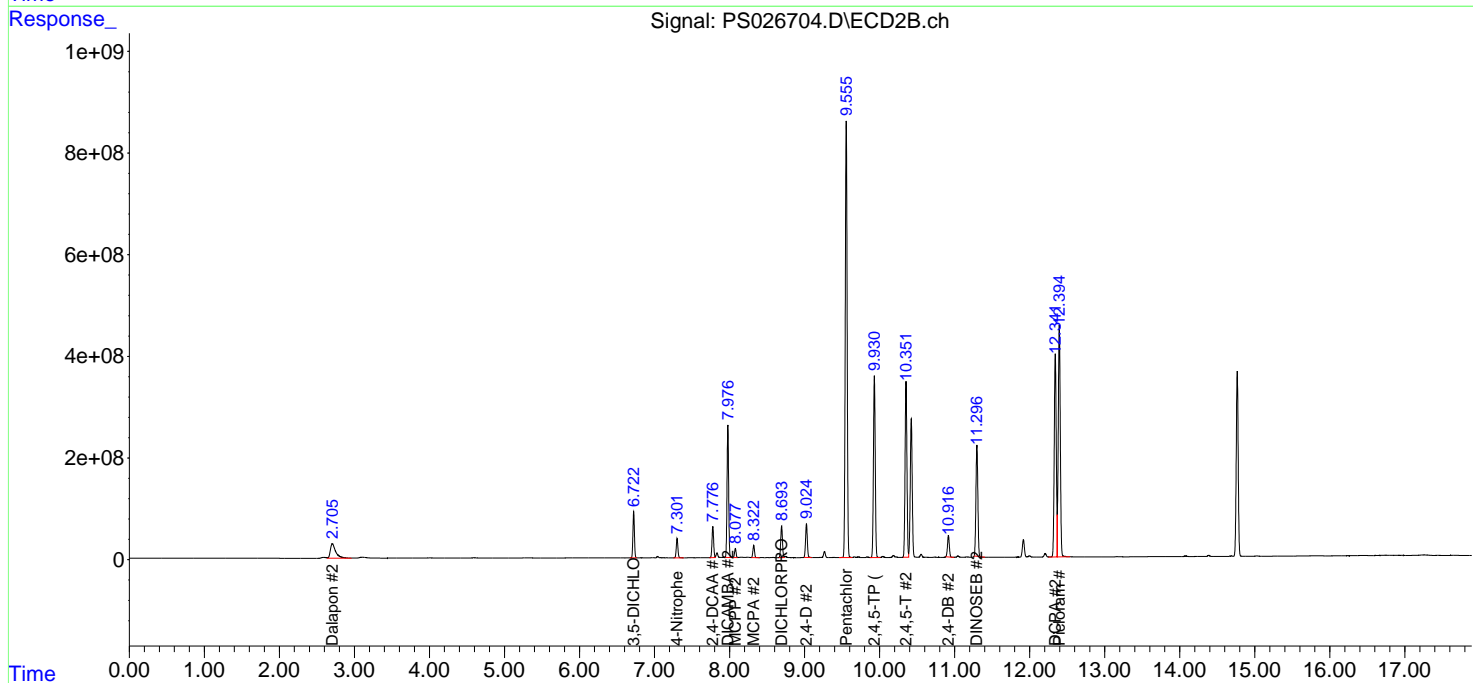
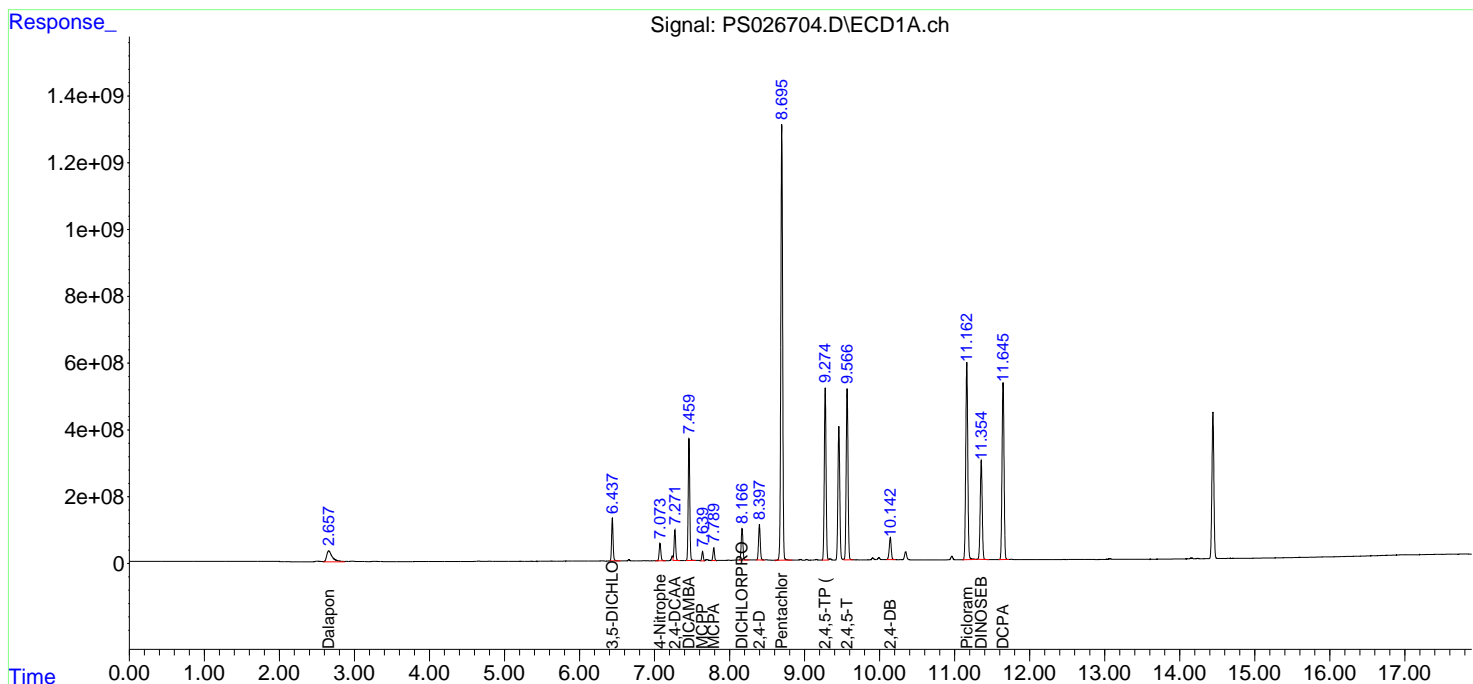
(f)=RT Delta > 1/2 Window (#)=Amounts differ by > 25% (m)=manual int.

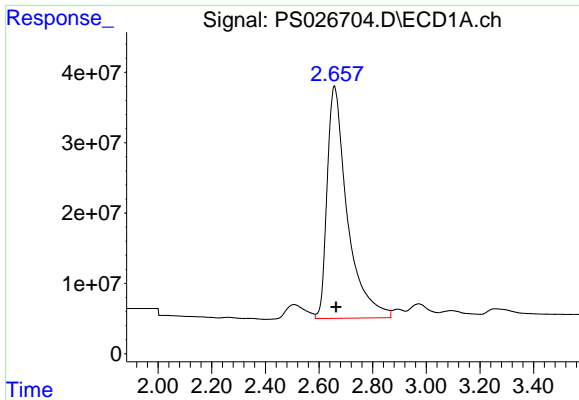
Data Path : Z:\pestpcbsrv\HPCHEM1\ECD\_S\Data\PS050924\  
 Data File : PS026704.D  
 Signal(s) : Signal #1: ECD1A.ch Signal #2: ECD2B.ch  
 Acq On : 09 May 2024 15:27  
 Operator : AR\AJ  
 Sample : PB160776BS  
 Misc :  
 ALS Vial : 6 Sample Multiplier: 1

Instrument :  
 ECD\_S  
 ClientSampleId :  
 PB160776BS

Integration File signal 1: autoint1.e  
 Integration File signal 2: autoint2.e  
 Quant Time: May 10 05:23:03 2024  
 Quant Method : Z:\pestpcbsrv\HPCHEM1\ECD\_S\Method\PS050624.M  
 Quant Title : 8080.M  
 QLast Update : Mon May 06 13:55:47 2024  
 Response via : Initial Calibration  
 Integrator: ChemStation

Volume Inj. : 2 µl  
 Signal #1 Phase : Rtx-CLPesticides Signal #2 Phase: Rtx-CLPesticides2  
 Signal #1 Info : 30M x 0.32mm x0.5 Signal #2 Info : 30M x 0.32mm x 0.25µm

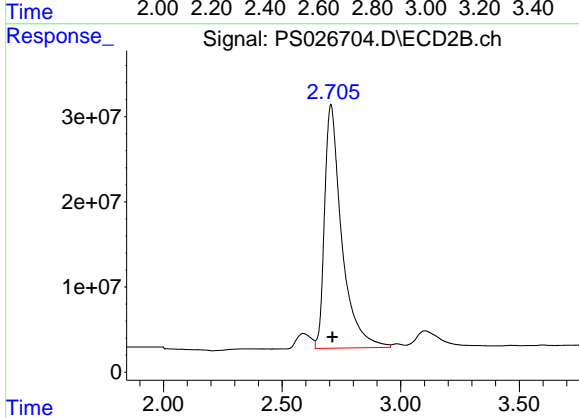




#1 Dalapon

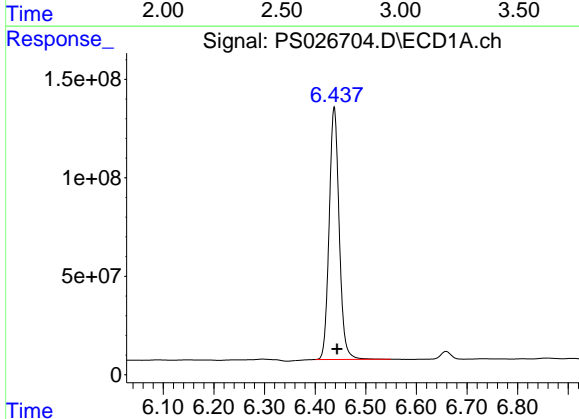
R.T.: 2.657 min  
 Delta R.T.: -0.006 min  
 Response: 1722474078  
 Conc: 470.97 ng/ml

Instrument :  
 ECD\_S  
 ClientSampleId :  
 PB160776BS



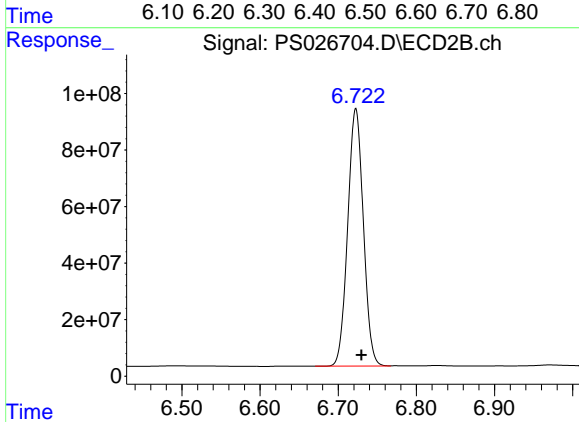
#1 Dalapon

R.T.: 2.705 min  
 Delta R.T.: -0.008 min  
 Response: 1436524856  
 Conc: 489.99 ng/ml



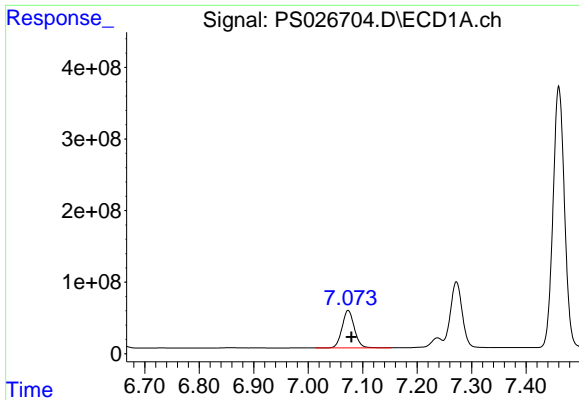
#2 3,5-DICHLOROBENZOIC ACID

R.T.: 6.438 min  
 Delta R.T.: -0.005 min  
 Response: 1766487752  
 Conc: 513.60 ng/ml



#2 3,5-DICHLOROBENZOIC ACID

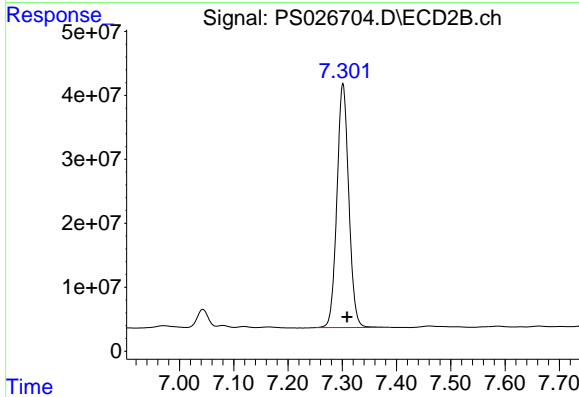
R.T.: 6.723 min  
 Delta R.T.: -0.007 min  
 Response: 1266885156  
 Conc: 517.87 ng/ml



#3 4-Nitrophenol

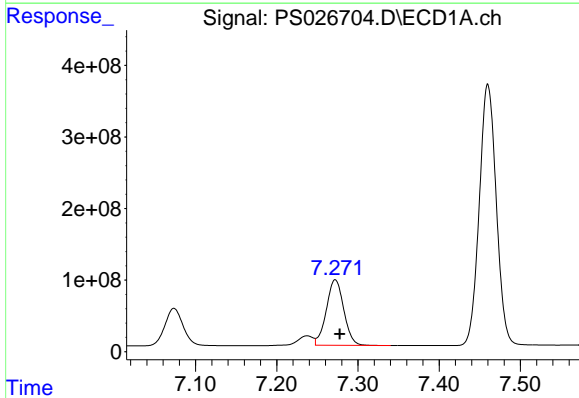
R.T.: 7.073 min  
 Delta R.T.: -0.006 min  
 Response: 821349232  
 Conc: 509.79 ng/ml

Instrument :  
 ECD\_S  
 ClientSampleId :  
 PB160776BS



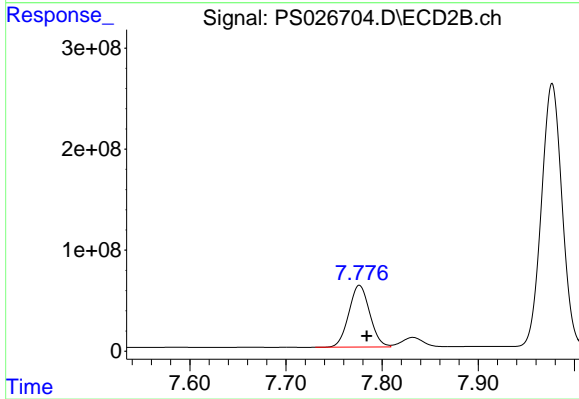
#3 4-Nitrophenol

R.T.: 7.301 min  
 Delta R.T.: -0.008 min  
 Response: 578328475  
 Conc: 508.53 ng/ml



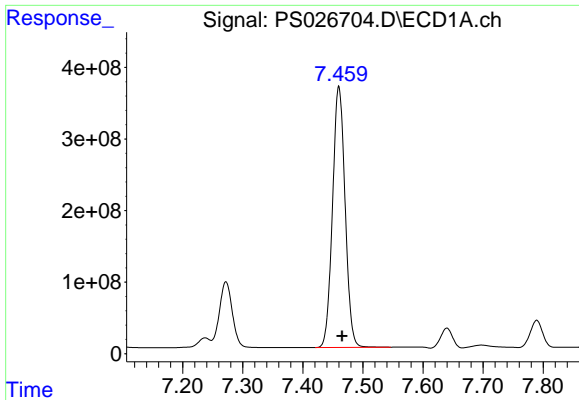
#4 2,4-DCAA

R.T.: 7.272 min  
 Delta R.T.: -0.005 min  
 Response: 1364332254  
 Conc: 548.62 ng/ml



#4 2,4-DCAA

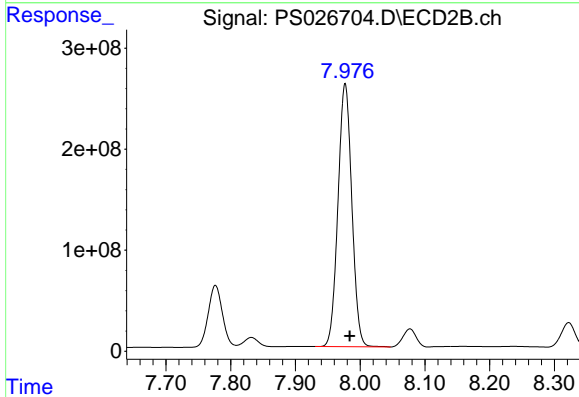
R.T.: 7.776 min  
 Delta R.T.: -0.008 min  
 Response: 928667060  
 Conc: 556.95 ng/ml



#5 DICAMBA

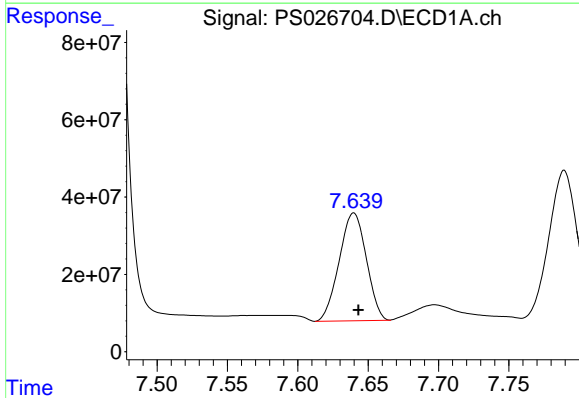
R.T.: 7.460 min  
 Delta R.T.: -0.005 min  
 Response: 5308560443  
 Conc: 517.62 ng/ml

Instrument :  
 ECD\_S  
 ClientSampleId :  
 PB160776BS



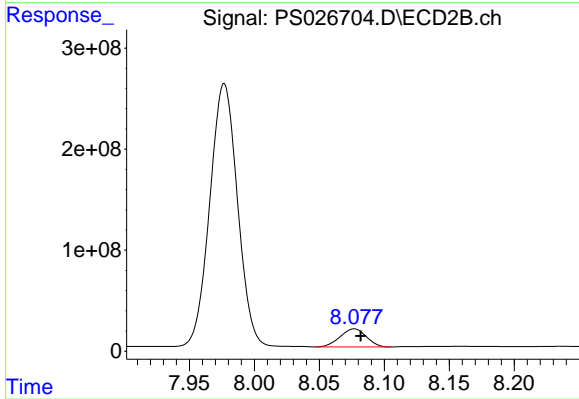
#5 DICAMBA

R.T.: 7.977 min  
 Delta R.T.: -0.007 min  
 Response: 3872528017  
 Conc: 523.03 ng/ml



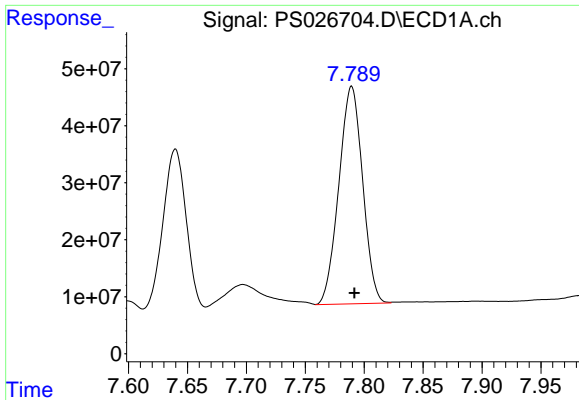
#6 MCPP

R.T.: 7.640 min  
 Delta R.T.: -0.003 min  
 Response: 374756139  
 Conc: 50.44 ug/ml



#6 MCPP

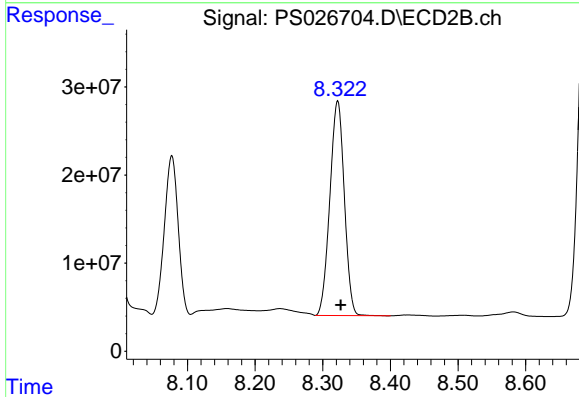
R.T.: 8.077 min  
 Delta R.T.: -0.005 min  
 Response: 252325499  
 Conc: 49.09 ug/ml



#7 MCPA

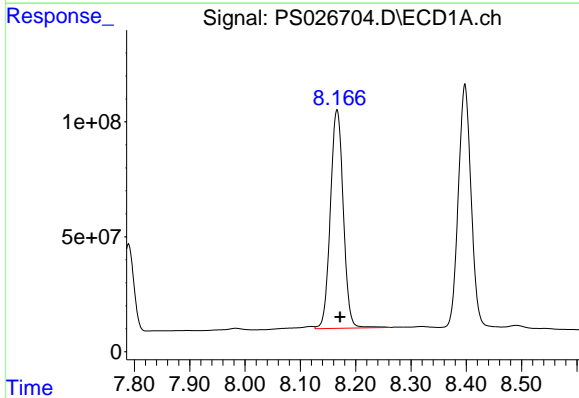
R.T.: 7.789 min  
 Delta R.T.: -0.002 min  
 Response: 535991995  
 Conc: 48.42 ug/ml

Instrument :  
 ECD\_S  
 ClientSampleId :  
 PB160776BS



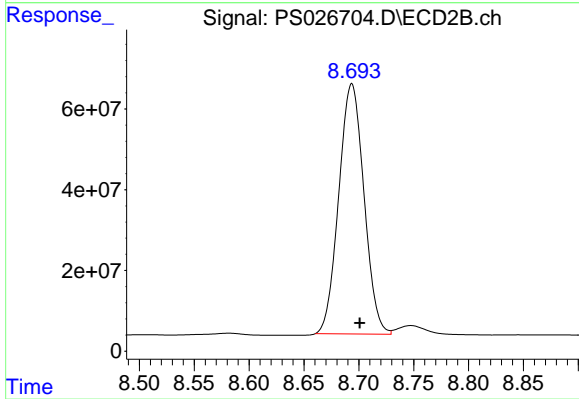
#7 MCPA

R.T.: 8.322 min  
 Delta R.T.: -0.004 min  
 Response: 361555150  
 Conc: 48.35 ug/ml



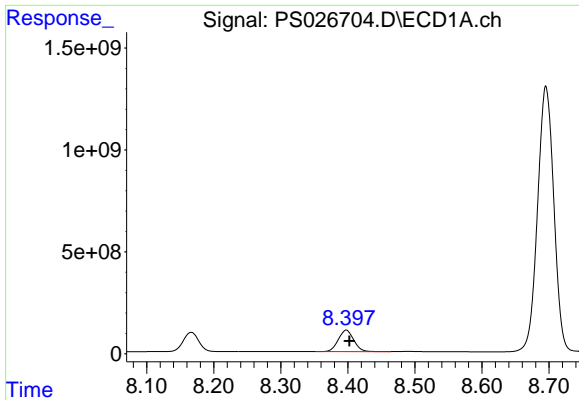
#8 DICHLORPROP

R.T.: 8.166 min  
 Delta R.T.: -0.005 min  
 Response: 1542612782  
 Conc: 514.77 ng/ml



#8 DICHLORPROP

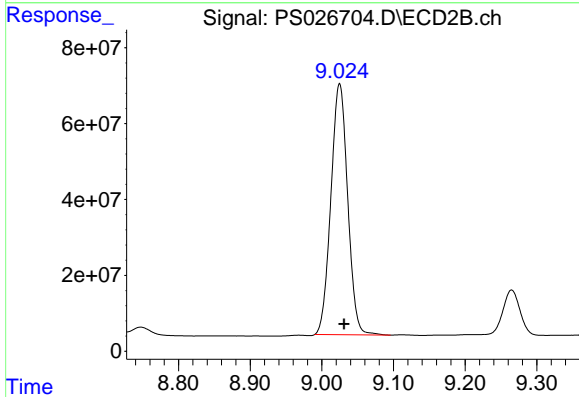
R.T.: 8.694 min  
 Delta R.T.: -0.007 min  
 Response: 990871590  
 Conc: 516.42 ng/ml



#9 2,4-D

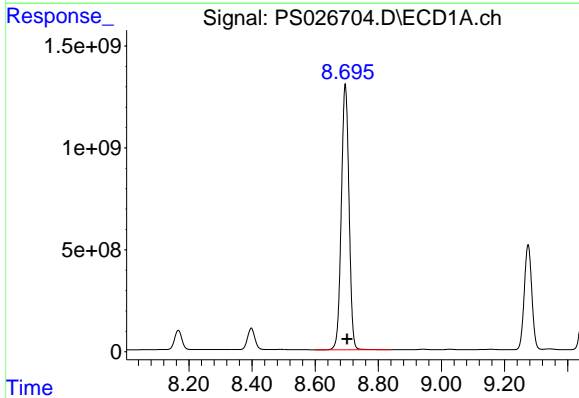
R.T.: 8.398 min  
 Delta R.T.: -0.005 min  
 Response: 1702262303  
 Conc: 517.13 ng/ml

Instrument :  
 ECD\_S  
 ClientSampleId :  
 PB160776BS



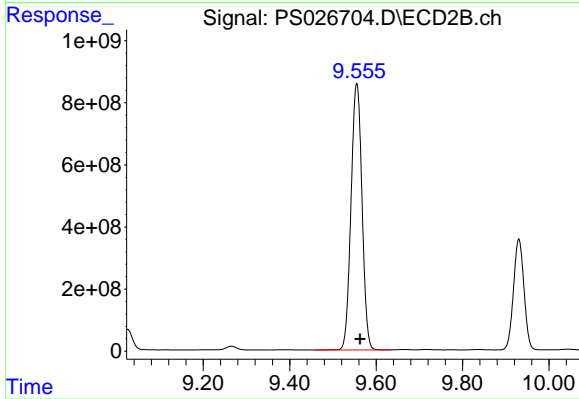
#9 2,4-D

R.T.: 9.025 min  
 Delta R.T.: -0.006 min  
 Response: 1077797582  
 Conc: 523.10 ng/ml



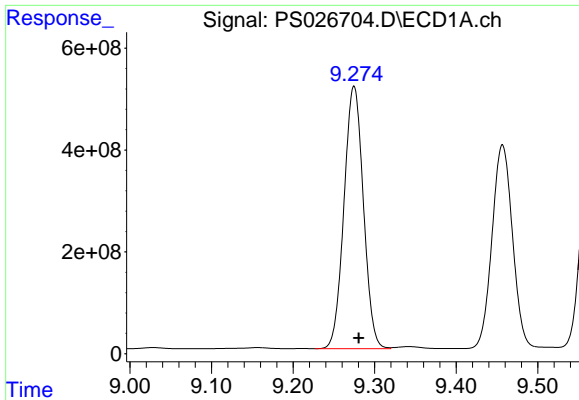
#10 Pentachlorophenol

R.T.: 8.695 min  
 Delta R.T.: -0.005 min  
 Response: 22028158396  
 Conc: 537.94 ng/ml



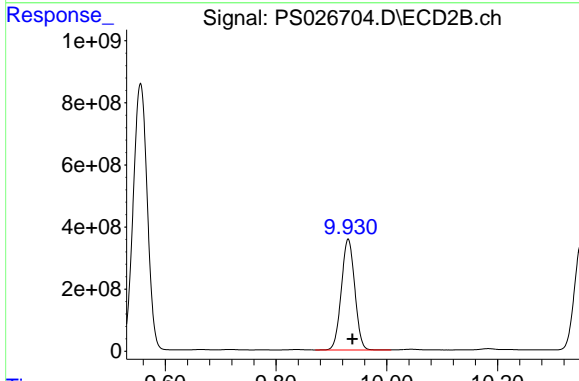
#10 Pentachlorophenol

R.T.: 9.555 min  
 Delta R.T.: -0.007 min  
 Response: 15099038061  
 Conc: 552.47 ng/ml

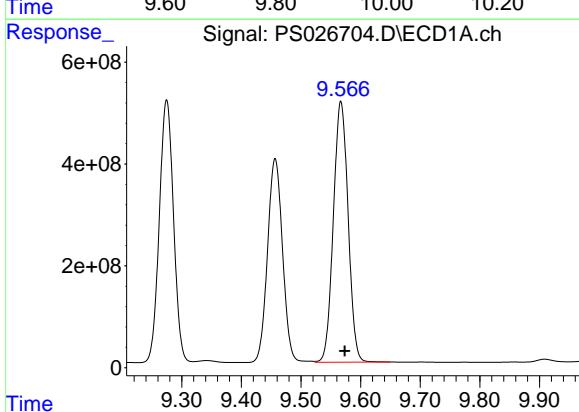


#11 2,4,5-TP (SILVEX)  
 R.T.: 9.275 min  
 Delta R.T.: -0.006 min  
 Response: 8520871692  
 Conc: 511.95 ng/ml

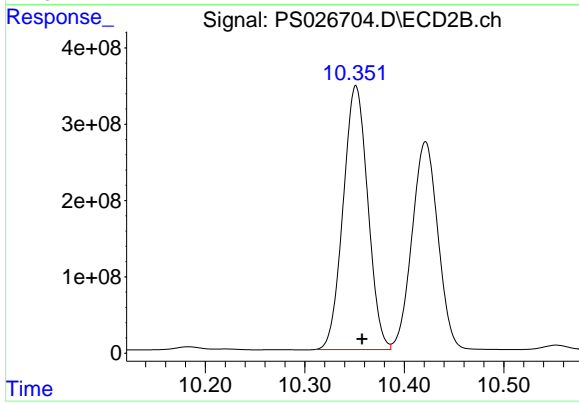
Instrument :  
 ECD\_S  
 ClientSampleId :  
 PB160776BS



#11 2,4,5-TP (SILVEX)  
 R.T.: 9.930 min  
 Delta R.T.: -0.007 min  
 Response: 5995979414  
 Conc: 543.35 ng/ml

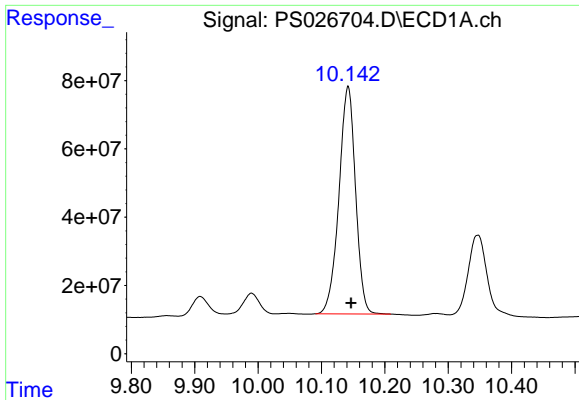


#12 2,4,5-T  
 R.T.: 9.567 min  
 Delta R.T.: -0.006 min  
 Response: 8786002149  
 Conc: 515.52 ng/ml



#12 2,4,5-T  
 R.T.: 10.351 min  
 Delta R.T.: -0.006 min  
 Response: 5941620570  
 Conc: 548.51 ng/ml

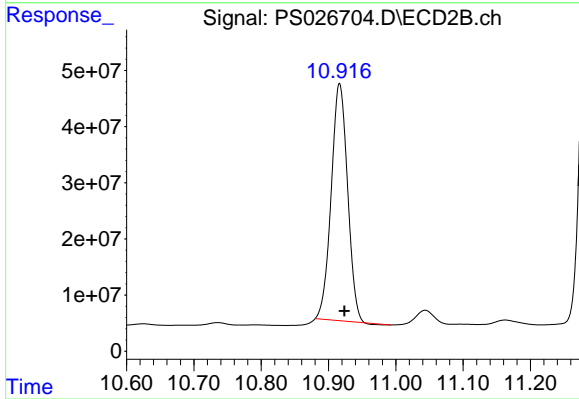




#13 2,4-DB

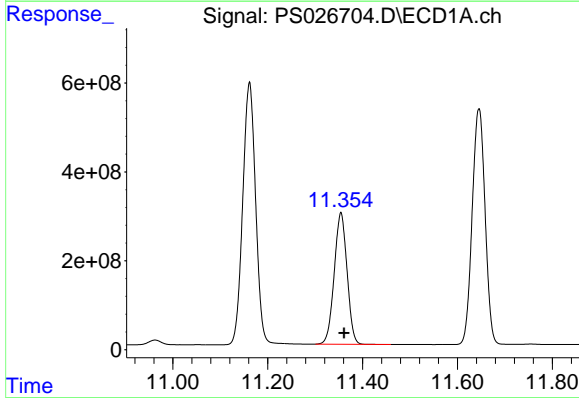
R.T.: 10.142 min  
Delta R.T.: -0.005 min  
Response: 1213545772  
Conc: 511.86 ng/ml

Instrument :  
ECD\_S  
ClientSampleId :  
PB160776BS



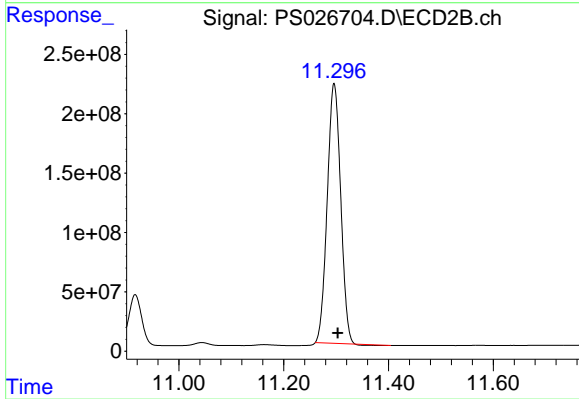
#13 2,4-DB

R.T.: 10.916 min  
Delta R.T.: -0.007 min  
Response: 712868492  
Conc: 524.42 ng/ml



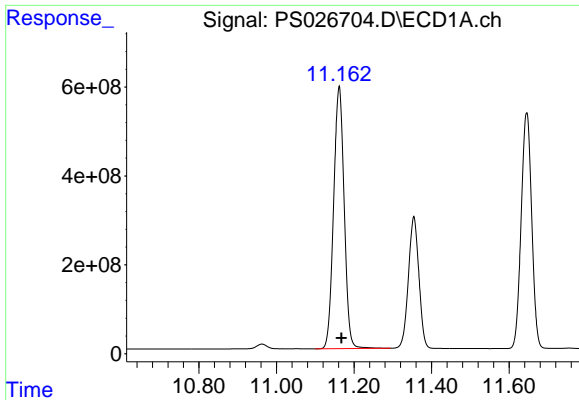
#14 DINOSEB

R.T.: 11.354 min  
Delta R.T.: -0.007 min  
Response: 5547071325  
Conc: 540.24 ng/ml



#14 DINOSEB

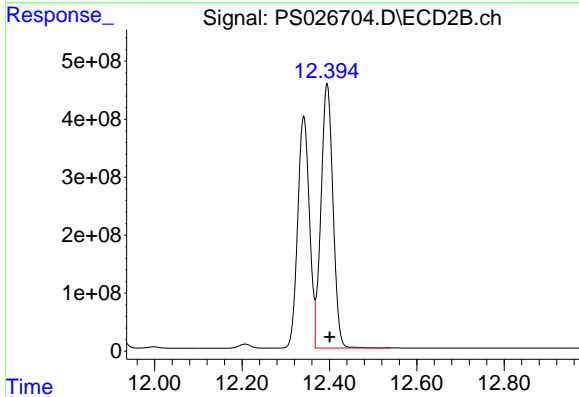
R.T.: 11.296 min  
Delta R.T.: -0.007 min  
Response: 3879312884  
Conc: 564.74 ng/ml



#15 Picloram

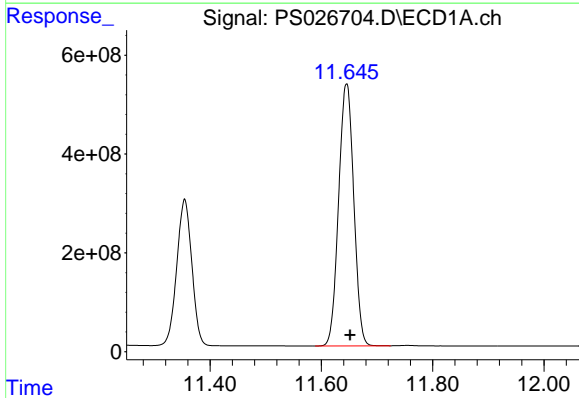
R.T.: 11.162 min  
 Delta R.T.: -0.006 min  
 Response: 11138476741  
 Conc: 498.66 ng/ml

Instrument :  
 ECD\_S  
 ClientSampleId :  
 PB160776BS



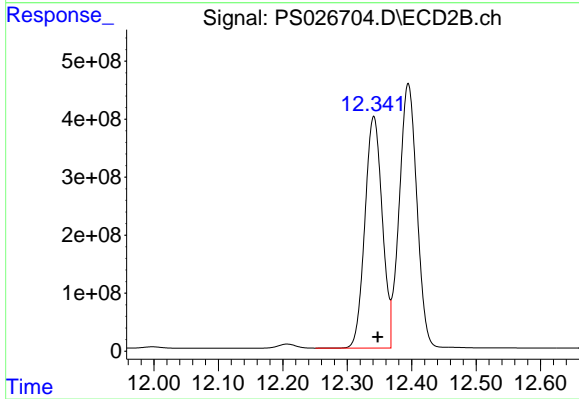
#15 Picloram

R.T.: 12.395 min  
 Delta R.T.: -0.007 min  
 Response: 8653183338  
 Conc: 539.96 ng/ml



#16 DCPA

R.T.: 11.645 min  
 Delta R.T.: -0.006 min  
 Response: 9997240708  
 Conc: 531.03 ng/ml



#16 DCPA

R.T.: 12.341 min  
 Delta R.T.: -0.006 min  
 Response: 7462859102  
 Conc: 564.44 ng/ml