

Data Path : Z:\pestpcbsrv\HPCHEM1\ECD_S\Data\PS051023\
 Data File : PS022966.D
 Signal(s) : Signal #1: ECD1A.ch Signal #2: ECD2B.ch
 Acq On : 10 May 2023 19:08
 Operator : AR\AJ
 Sample : PB152711BS
 Misc :
 ALS Vial : 10 Sample Multiplier: 1

Instrument :
 ECD_S
 ClientSampleId :

Integration File signal 1: autoint1.e
 Integration File signal 2: autoint2.e
 Quant Time: May 11 03:57:37 2023
 Quant Method : Z:\pestpcbsrv\HPCHEM1\ECD_S\Method\PS051023.M
 Quant Title : 8080.M
 QLast Update : Wed May 10 16:09:19 2023
 Response via : Initial Calibration
 Integrator: ChemStation

Volume Inj. : 2 µl
 Signal #1 Phase : Rtx-CLPesticides Signal #2 Phase: Rtx-CLPesticides2
 Signal #1 Info : 30M x 0.32mm x0.5 Signal #2 Info : 30M x 0.32mm x 0.25µm

	Compound	RT#1	RT#2	Resp#1	Resp#2	ng/ml	ng/ml

System Monitoring Compounds							
4) S	2,4-DCAA	6.482	6.858	782.2E6	287.2E6	514.243	511.767
Target Compounds							
1) T	Dalapon	2.551	2.580	751.0E6	399.5E6	464.455	462.822
2) T	3,5-DICHL...	5.835	6.024	962.6E6	404.2E6	479.675	476.490
3) T	4-Nitroph...	6.314	6.463	483.4E6	155.4E6	459.155	468.162
5) T	DICAMBA	6.630	7.025	3210.0E6	1196.3E6	488.837	480.163
6) T	MCP P	6.788	7.119	221.2E6	83226840	47.334	47.039
7) T	MCPA	6.916	7.329	330.4E6	124.5E6	47.197	47.014
8) T	DICHLORPROP	7.241	7.648	914.0E6	294.9E6	487.685	476.537
9) T	2,4-D	7.443	7.936	1128.8E6	342.9E6	487.755	479.323
10) T	Pentachlo...	7.677	8.367	13626.9E6	4607.5E6	509.041	497.052
11) T	2,4,5-TP ...	8.213	8.727	5800.8E6	1739.5E6	496.601	488.595
12) T	2,4,5-T	8.474	9.101	5756.7E6	1559.6E6	498.110	485.727
13) T	2,4-DB	8.990	9.608	1118.9E6	187.3E6	476.950	487.832
14) T	DINOSEB	10.064	9.937	4074.2E6	1159.5E6	499.054	490.153
15) T	Picloram	9.885	10.904	8166.7E6	1961.5E6	476.236	460.578
16) T	DCPA	10.333	10.865	6655.0E6	1861.2E6	510.151	498.090

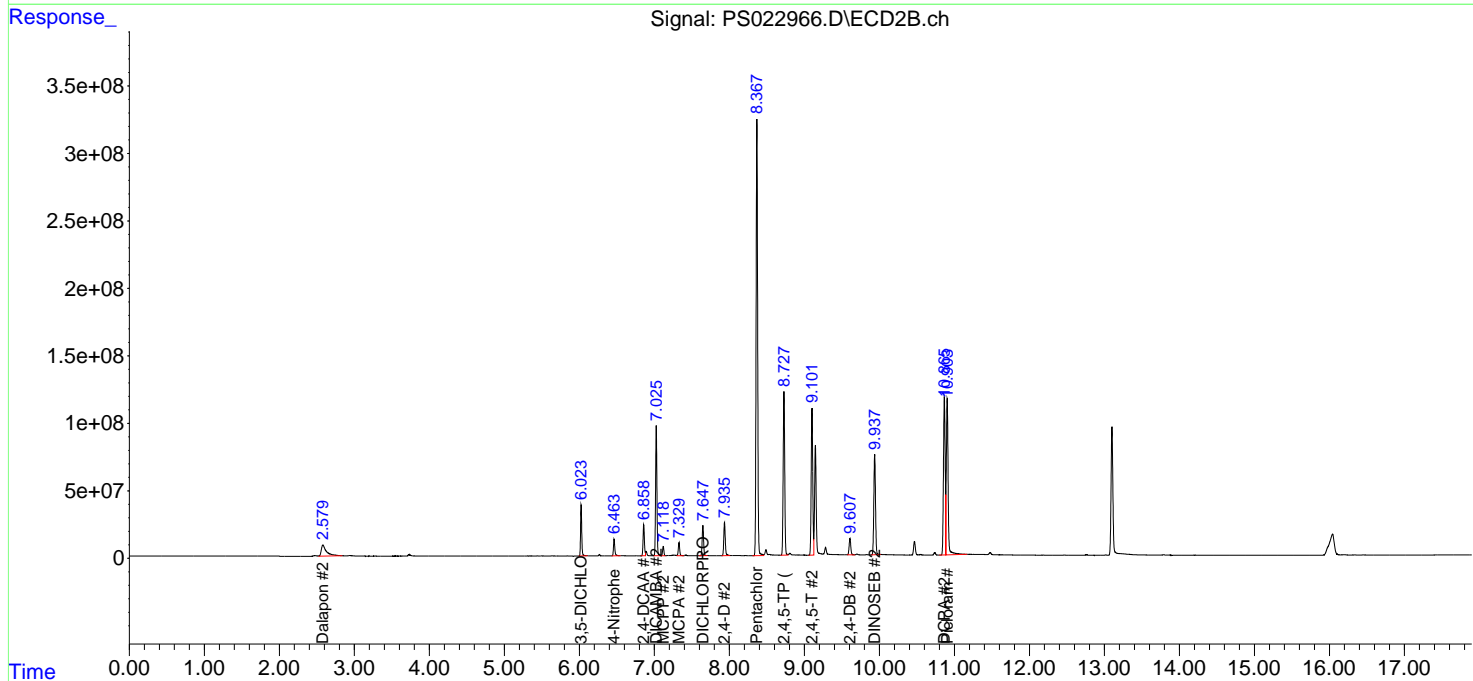
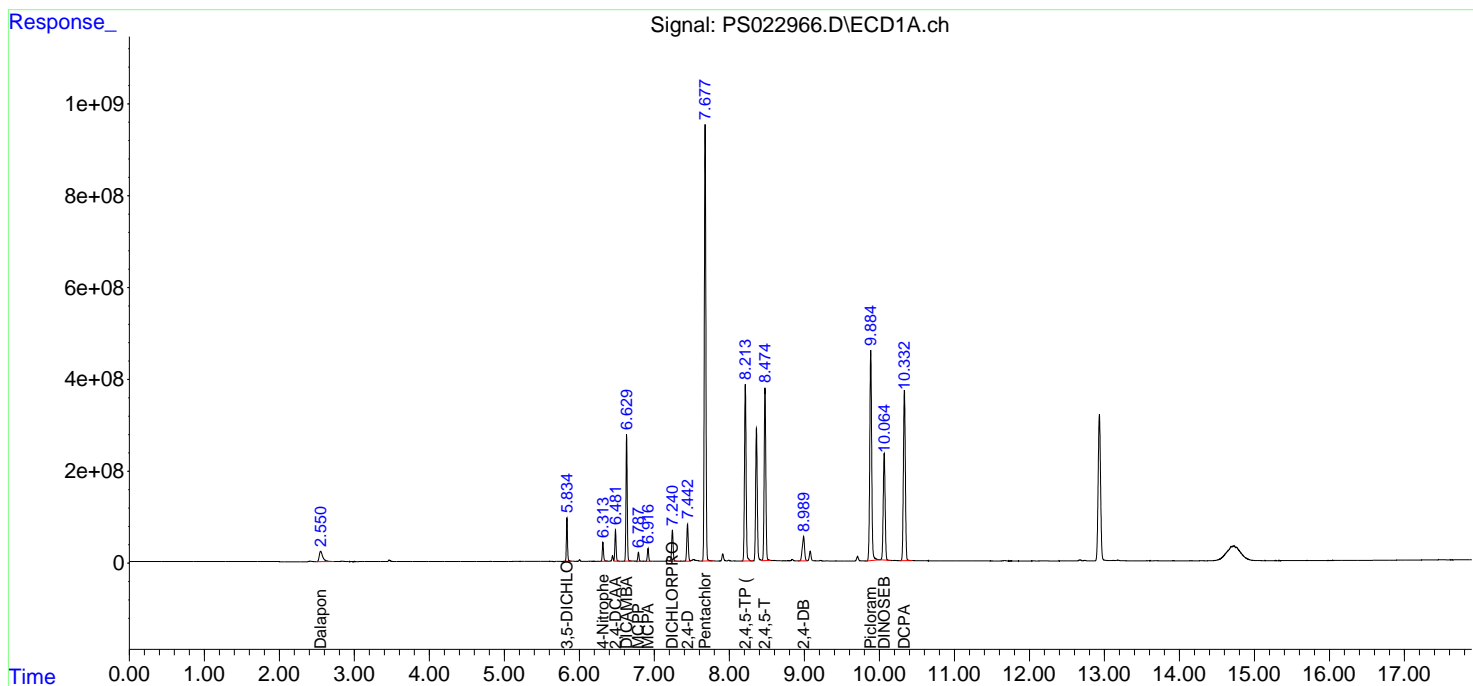
(f)=RT Delta > 1/2 Window (#)=Amounts differ by > 25% (m)=manual int.

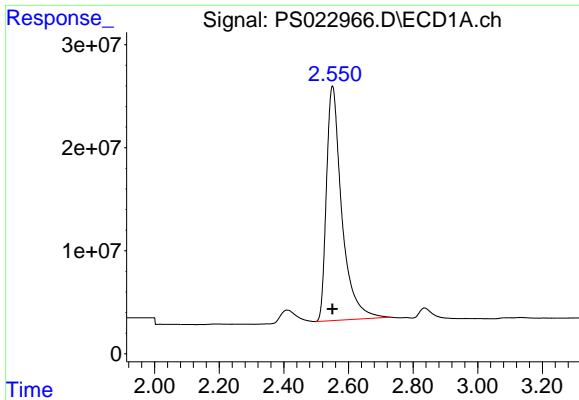
Data Path : Z:\pestpcbsrv\HPCHEM1\ECD_S\Data\PS051023\
 Data File : PS022966.D
 Signal(s) : Signal #1: ECD1A.ch Signal #2: ECD2B.ch
 Acq On : 10 May 2023 19:08
 Operator : AR\AJ
 Sample : PB152711BS
 Misc :
 ALS Vial : 10 Sample Multiplier: 1

Instrument :
 ECD_S
 ClientSampleId :

Integration File signal 1: autoint1.e
 Integration File signal 2: autoint2.e
 Quant Time: May 11 03:57:37 2023
 Quant Method : Z:\pestpcbsrv\HPCHEM1\ECD_S\Method\PS051023.M
 Quant Title : 8080.M
 QLast Update : Wed May 10 16:09:19 2023
 Response via : Initial Calibration
 Integrator: ChemStation

Volume Inj. : 2 µl
 Signal #1 Phase : Rtx-CLPesticides Signal #2 Phase: Rtx-CLPesticides2
 Signal #1 Info : 30M x 0.32mm x0.5 Signal #2 Info : 30M x 0.32mm x 0.25µm

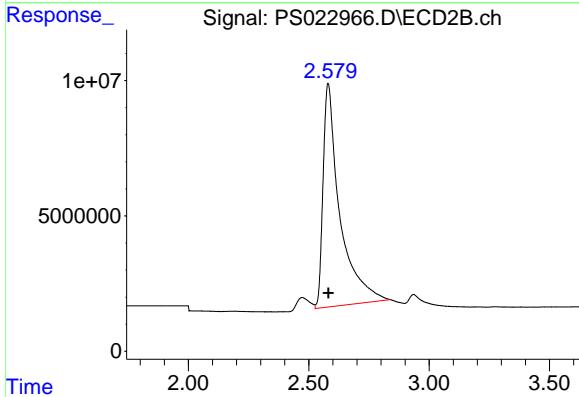




#1 Dalapon

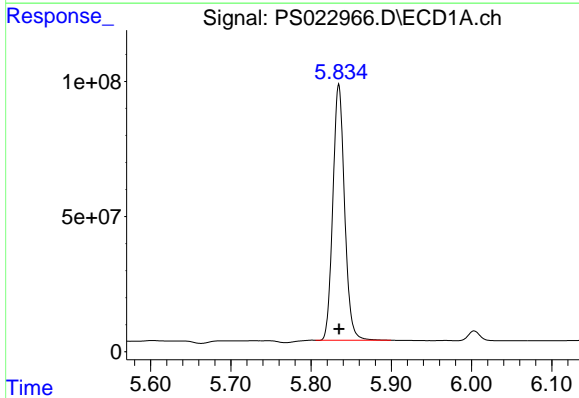
R.T.: 2.551 min
 Delta R.T.: 0.000 min
 Response: 750982694
 Conc: 464.45 ng/ml

Instrument :
 ECD_S
 ClientSampleId :



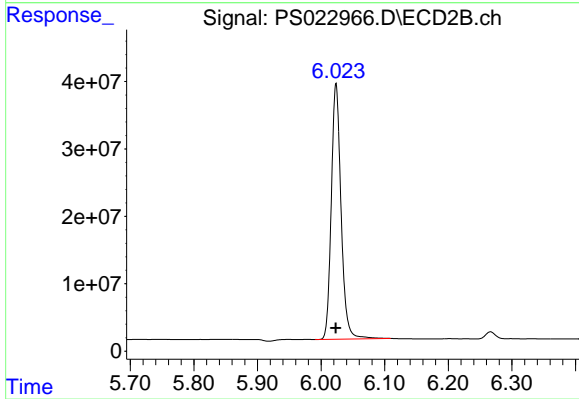
#1 Dalapon

R.T.: 2.580 min
 Delta R.T.: -0.002 min
 Response: 399489578
 Conc: 462.82 ng/ml



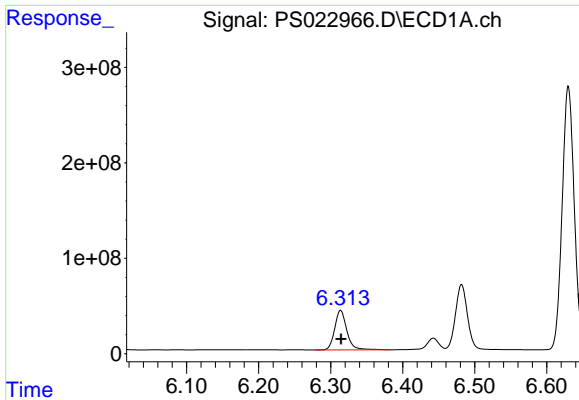
#2 3,5-DICHLOROBENZOIC ACID

R.T.: 5.835 min
 Delta R.T.: 0.000 min
 Response: 962581855
 Conc: 479.68 ng/ml



#2 3,5-DICHLOROBENZOIC ACID

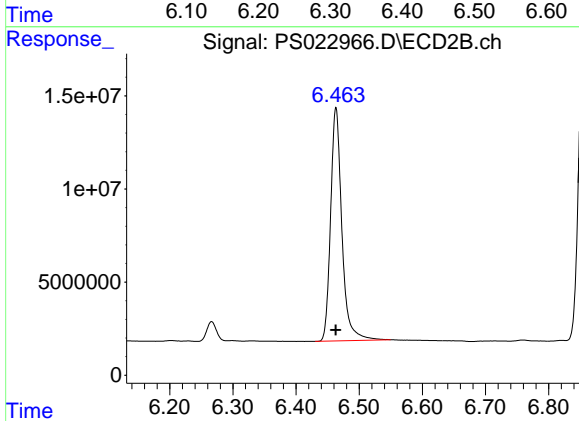
R.T.: 6.024 min
 Delta R.T.: 0.000 min
 Response: 404164200
 Conc: 476.49 ng/ml



#3 4-Nitrophenol

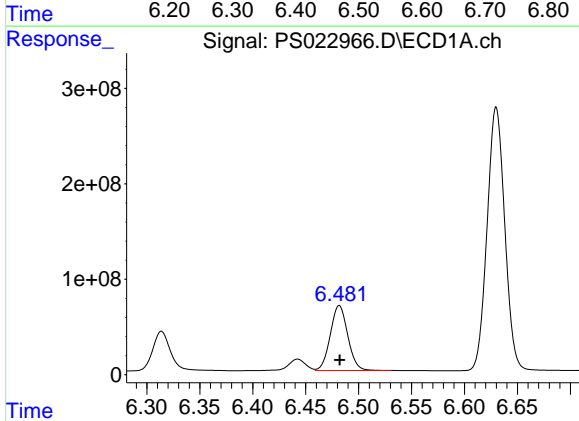
R.T.: 6.314 min
Delta R.T.: 0.000 min
Response: 483384466
Conc: 459.15 ng/ml

Instrument :
ECD_S
ClientSampleId :



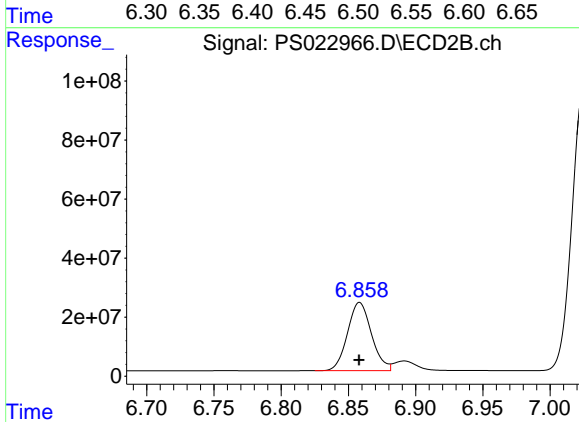
#3 4-Nitrophenol

R.T.: 6.463 min
Delta R.T.: 0.000 min
Response: 155354391
Conc: 468.16 ng/ml



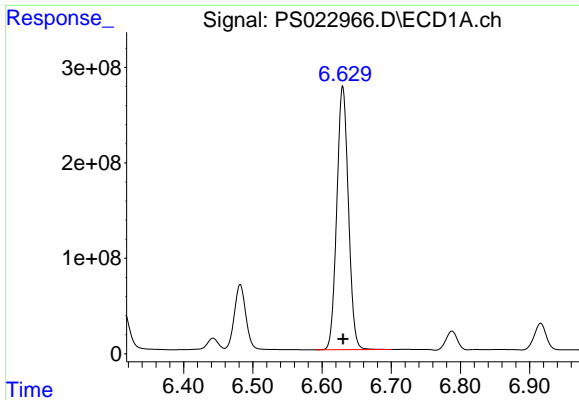
#4 2,4-DCAA

R.T.: 6.482 min
Delta R.T.: 0.000 min
Response: 782161679
Conc: 514.24 ng/ml



#4 2,4-DCAA

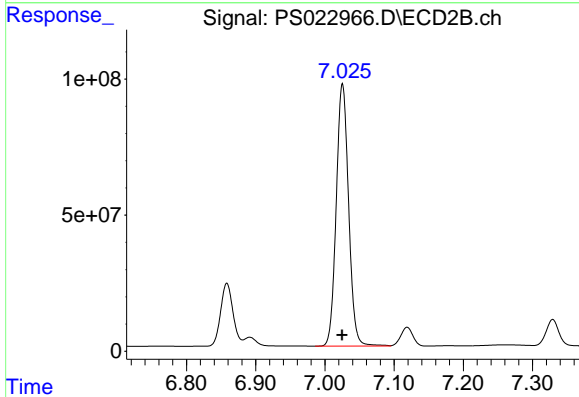
R.T.: 6.858 min
Delta R.T.: 0.000 min
Response: 287160207
Conc: 511.77 ng/ml



#5 DICAMBA

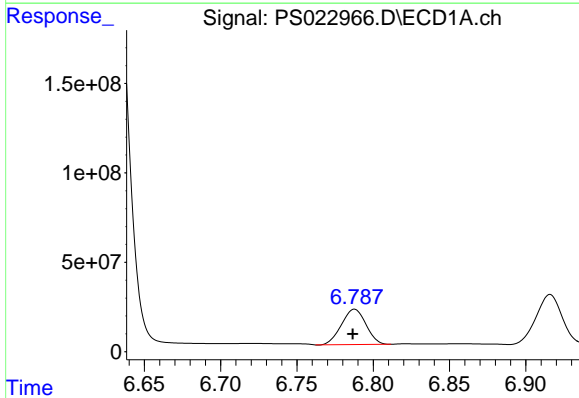
R.T.: 6.630 min
 Delta R.T.: 0.000 min
 Response: 3209998618
 Conc: 488.84 ng/ml

Instrument :
 ECD_S
 ClientSampleId :



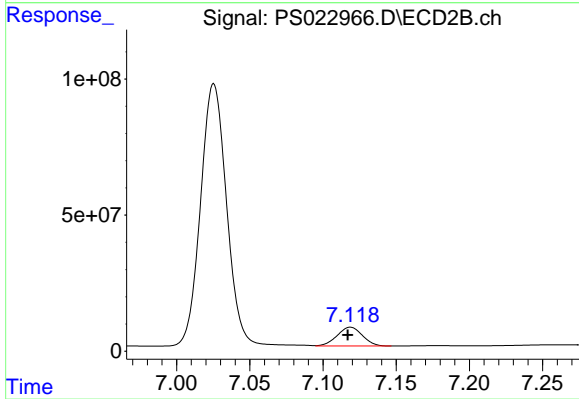
#5 DICAMBA

R.T.: 7.025 min
 Delta R.T.: 0.000 min
 Response: 1196271252
 Conc: 480.16 ng/ml



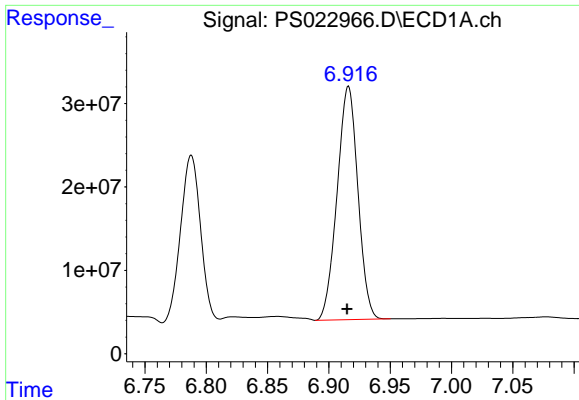
#6 MCP

R.T.: 6.788 min
 Delta R.T.: 0.001 min
 Response: 221173893
 Conc: 47.33 ug/ml



#6 MCP

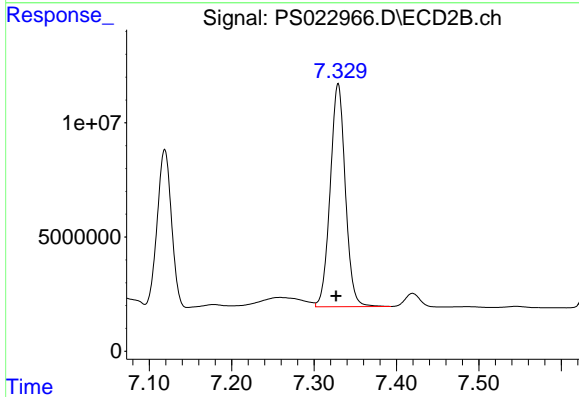
R.T.: 7.119 min
 Delta R.T.: 0.002 min
 Response: 83226840
 Conc: 47.04 ug/ml



#7 MCPA

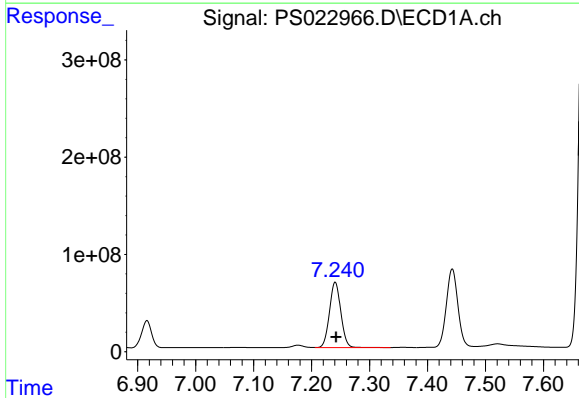
R.T.: 6.916 min
 Delta R.T.: 0.001 min
 Response: 330415419
 Conc: 47.20 ug/ml

Instrument :
 ECD_S
 ClientSampleId :



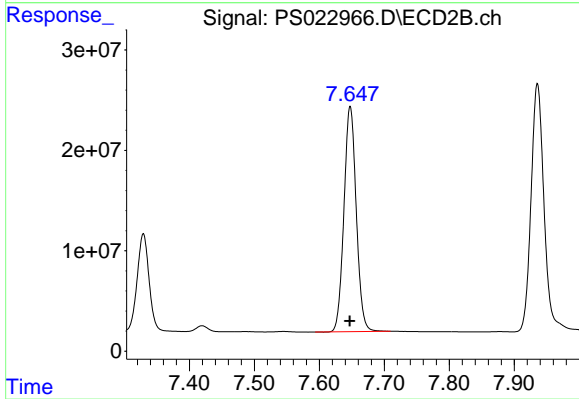
#7 MCPA

R.T.: 7.329 min
 Delta R.T.: 0.003 min
 Response: 124484795
 Conc: 47.01 ug/ml



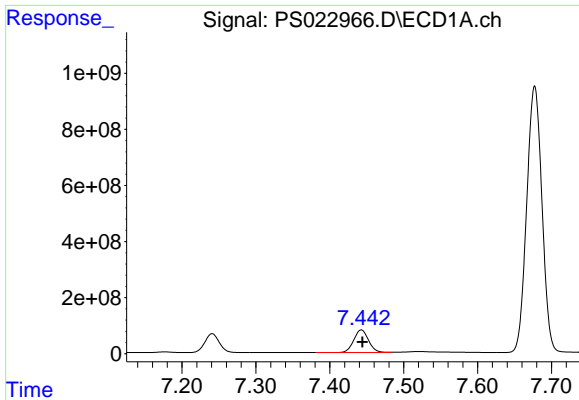
#8 DICHLORPROP

R.T.: 7.241 min
 Delta R.T.: -0.001 min
 Response: 913978708
 Conc: 487.68 ng/ml



#8 DICHLORPROP

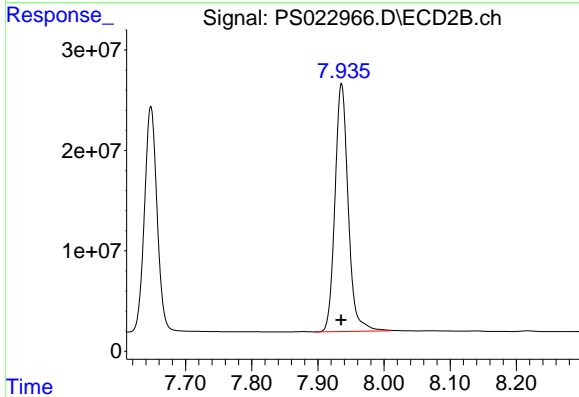
R.T.: 7.648 min
 Delta R.T.: 0.000 min
 Response: 294909388
 Conc: 476.54 ng/ml



#9 2,4-D

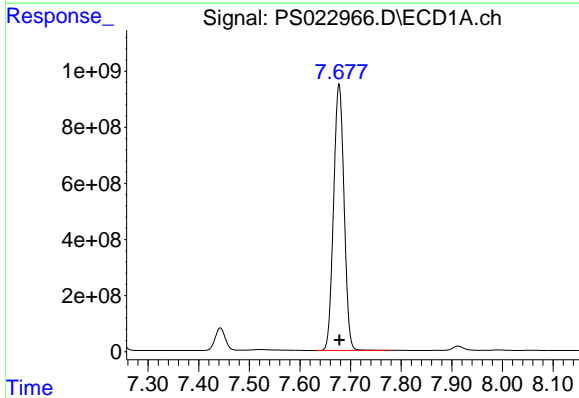
R.T.: 7.443 min
 Delta R.T.: -0.001 min
 Response: 1128803870
 Conc: 487.75 ng/ml

Instrument :
 ECD_S
 ClientSampleId :



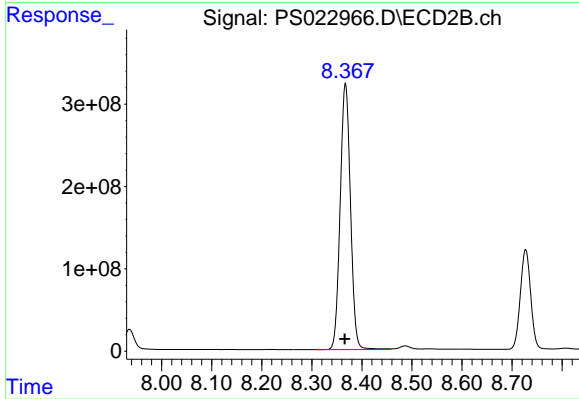
#9 2,4-D

R.T.: 7.936 min
 Delta R.T.: 0.000 min
 Response: 342917410
 Conc: 479.32 ng/ml



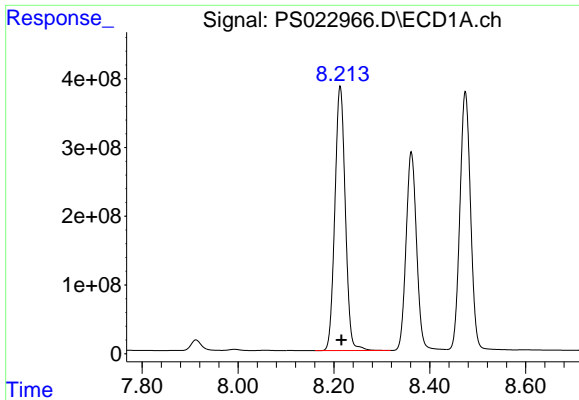
#10 Pentachlorophenol

R.T.: 7.677 min
 Delta R.T.: 0.000 min
 Response: 13626904146
 Conc: 509.04 ng/ml



#10 Pentachlorophenol

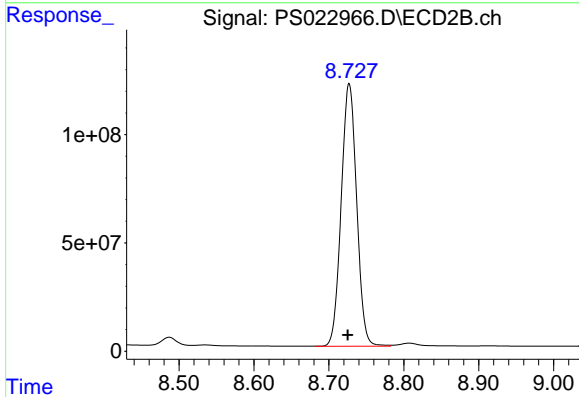
R.T.: 8.367 min
 Delta R.T.: 0.001 min
 Response: 4607487769
 Conc: 497.05 ng/ml



#11 2,4,5-TP (SILVEX)

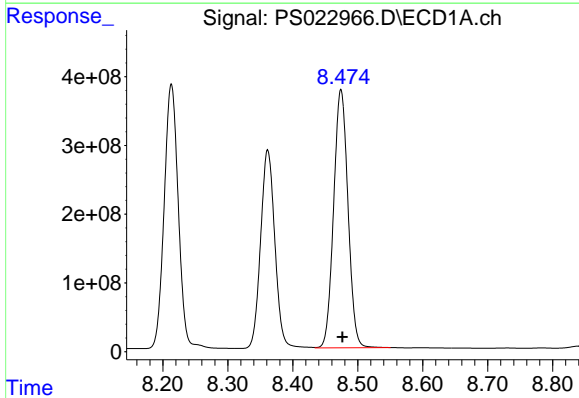
R.T.: 8.213 min
 Delta R.T.: -0.003 min
 Response: 5800833644
 Conc: 496.60 ng/ml

Instrument :
 ECD_S
 ClientSampleId :



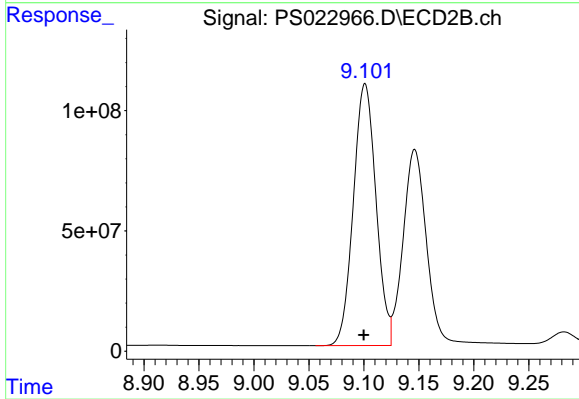
#11 2,4,5-TP (SILVEX)

R.T.: 8.727 min
 Delta R.T.: 0.002 min
 Response: 1739467883
 Conc: 488.60 ng/ml



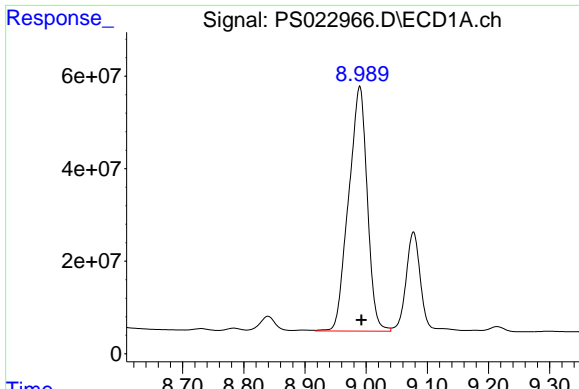
#12 2,4,5-T

R.T.: 8.474 min
 Delta R.T.: -0.002 min
 Response: 5756748474
 Conc: 498.11 ng/ml



#12 2,4,5-T

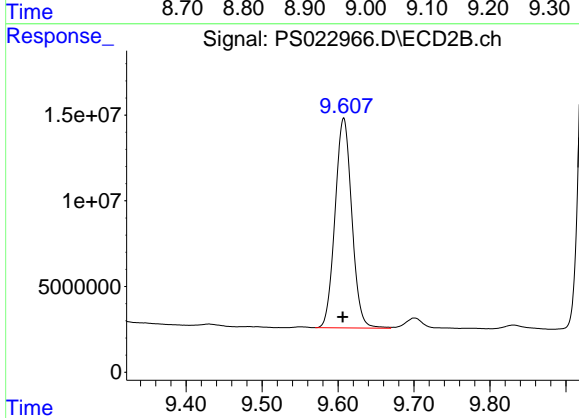
R.T.: 9.101 min
 Delta R.T.: 0.001 min
 Response: 1559587243
 Conc: 485.73 ng/ml



#13 2,4-DB

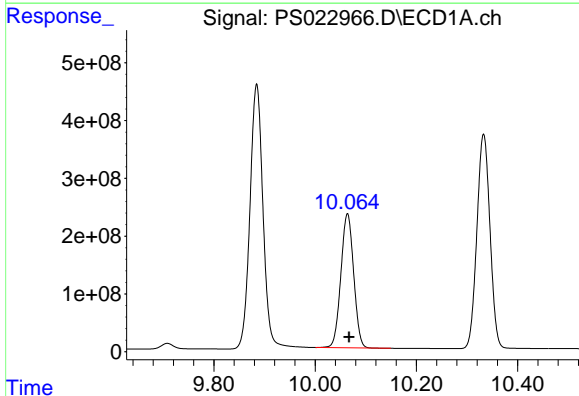
R.T.: 8.990 min
 Delta R.T.: -0.003 min
 Response: 1118935119
 Conc: 476.95 ng/ml

Instrument :
 ECD_S
 ClientSampleId :



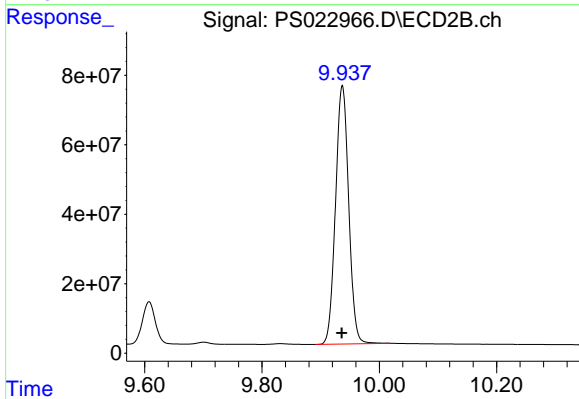
#13 2,4-DB

R.T.: 9.608 min
 Delta R.T.: 0.001 min
 Response: 187322535
 Conc: 487.83 ng/ml



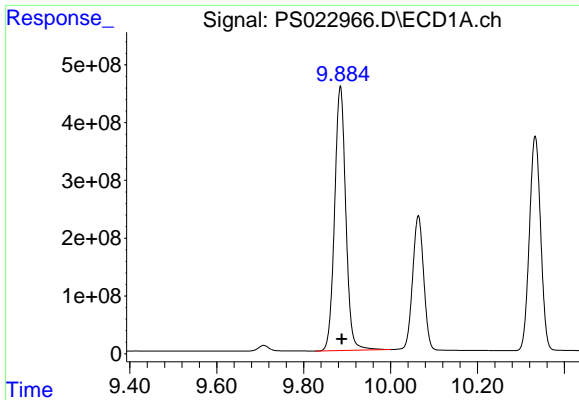
#14 DINOSEB

R.T.: 10.064 min
 Delta R.T.: -0.003 min
 Response: 4074200270
 Conc: 499.05 ng/ml



#14 DINOSEB

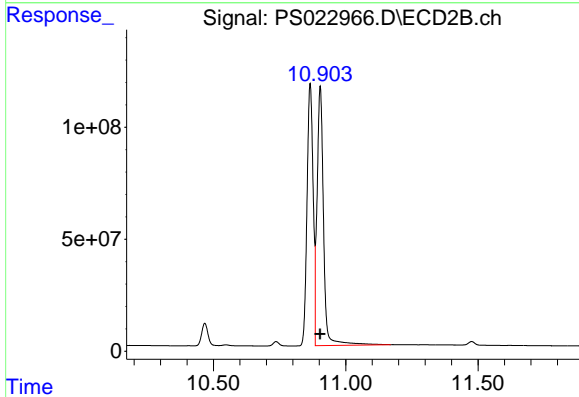
R.T.: 9.937 min
 Delta R.T.: 0.000 min
 Response: 1159490064
 Conc: 490.15 ng/ml



#15 Picloram

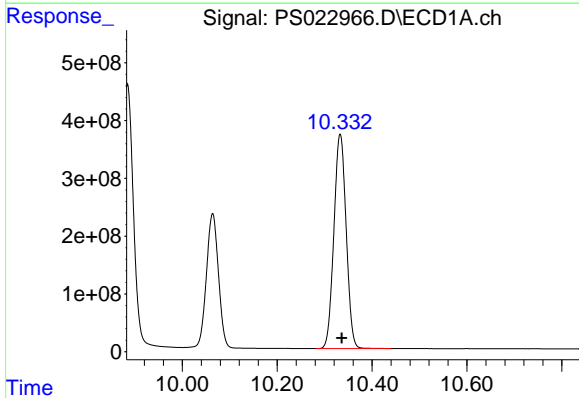
R.T.: 9.885 min
Delta R.T.: -0.003 min
Response: 8166688165
Conc: 476.24 ng/ml

Instrument :
ECD_S
ClientSampleId :



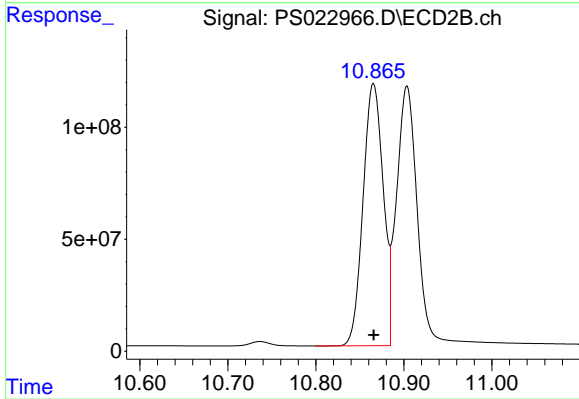
#15 Picloram

R.T.: 10.904 min
Delta R.T.: 0.000 min
Response: 1961526702
Conc: 460.58 ng/ml



#16 DCPA

R.T.: 10.333 min
Delta R.T.: -0.004 min
Response: 6655038603
Conc: 510.15 ng/ml



#16 DCPA

R.T.: 10.865 min
Delta R.T.: 0.000 min
Response: 1861196384
Conc: 498.09 ng/ml