

Data Path : Z:\pestpcbsrv\HPCHEM1\ECD_S\Data\PS051120\
 Data File : PS010203.D
 Signal(s) : Signal #1: ECD1A.ch Signal #2: ECD2B.ch
 Acq On : 11 May 2020 12:38
 Operator : DD\AJ
 Sample : HSTDICC200
 Misc :
 ALS Vial : 8 Sample Multiplier: 1

Instrument :
 ECD_S
 ClientSampleId :
 HSTDICC200

Integration File signal 1: autoint1.e
 Integration File signal 2: autoint2.e
 Quant Time: May 11 17:04:56 2020
 Quant Method : Z:\pestpcbsrv\HPCHEM1\ECD_S\Method\PS051120.M
 Quant Title : 8080.M
 QLast Update : Mon May 11 17:00:21 2020
 Response via : Initial Calibration
 Integrator: ChemStation

Volume Inj. : 2 µl
 Signal #1 Phase : Rtx-CLPesticides Signal #2 Phase: Rtx-CLPesticides2
 Signal #1 Info : 30M x 0.32mm x0.5 Signal #2 Info : 30M x 0.32mm x 0.25µm

	Compound	RT#1	RT#2	Resp#1	Resp#2	ng/ml	ng/ml

System Monitoring Compounds							
4) S	2,4-DCAA	7.234	6.922	139.6E6	109.2E6	199.127	205.133
Target Compounds							
1) T	Dalapon	3.046	2.629	158.2E6	148.9E6	176.565	184.606
2) T	3,5-DICHL...	6.446	6.071	178.3E6	158.3E6	184.333	194.223
3) T	4-Nitroph...	7.064	6.527	61612141	64643250	186.787	195.489
5) T	DICAMBA	7.427	7.091	506.1E6	424.7E6	183.351	193.065
6) T	MCP P	7.592	7.183	37816898	33464705	17.200	18.269
7) T	MCPA	7.740	7.397	55876853	52075499	17.940	19.524
8) T	DICHLORPROP	8.120	7.718	122.5E6	110.5E6	183.688	198.666
9) T	2,4-D	8.350	8.012	127.8E6	140.5E6	178.516	206.086
10) T	Pentachlo...	8.661	8.442	1903.7E6	1528.0E6	208.875	226.781
11) T	2,4,5-TP ...	9.211	8.803	708.2E6	583.5E6	190.496	200.514
12) T	2,4,5-T	9.496	9.182	664.4E6	577.9E6	186.389	197.092
13) T	2,4-DB	10.050	9.689	89690669	75952654	176.983	191.786
14) T	DINOSEB	11.212	10.023	513.4E6	411.0E6	185.771	191.660
15) T	Picloram	11.029	11.003	829.3E6	846.1E6	177.406	197.734
16) T	DCPA	11.478	10.952	902.5E6	745.4E6	198.356	208.529

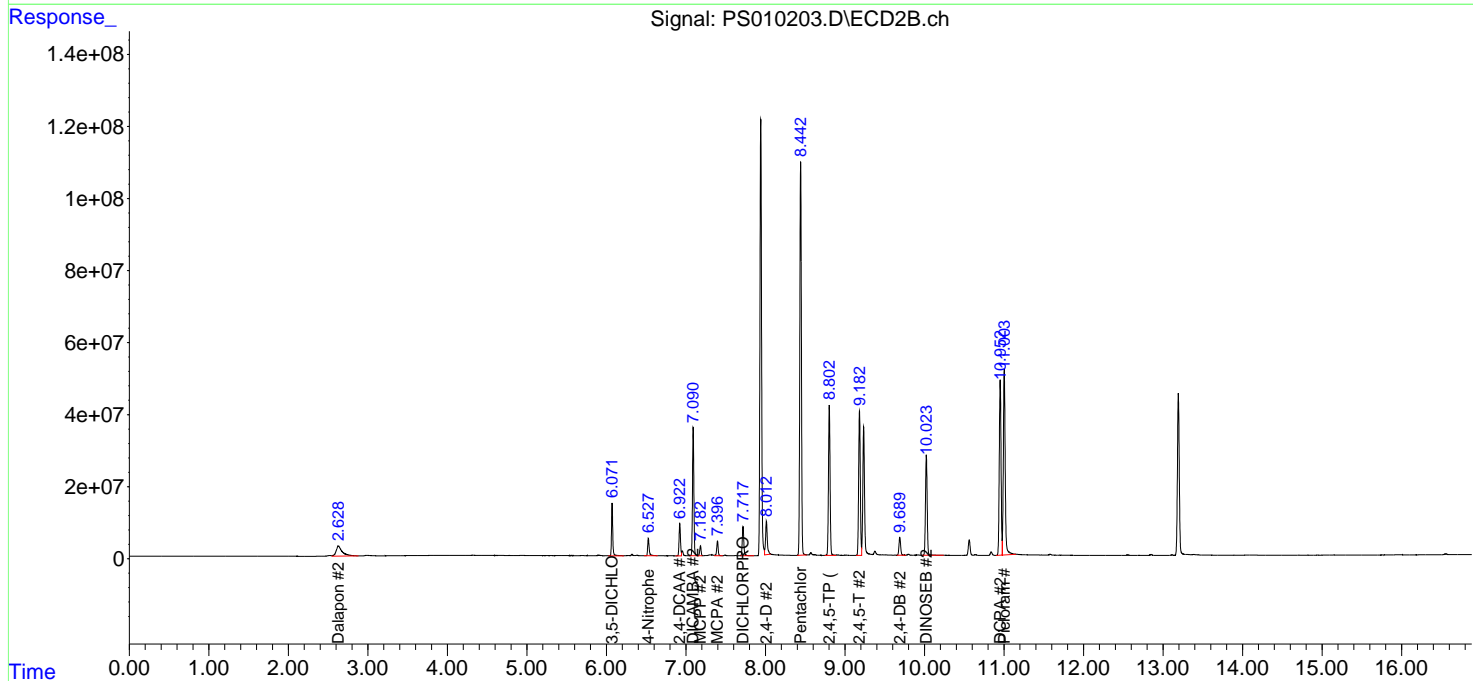
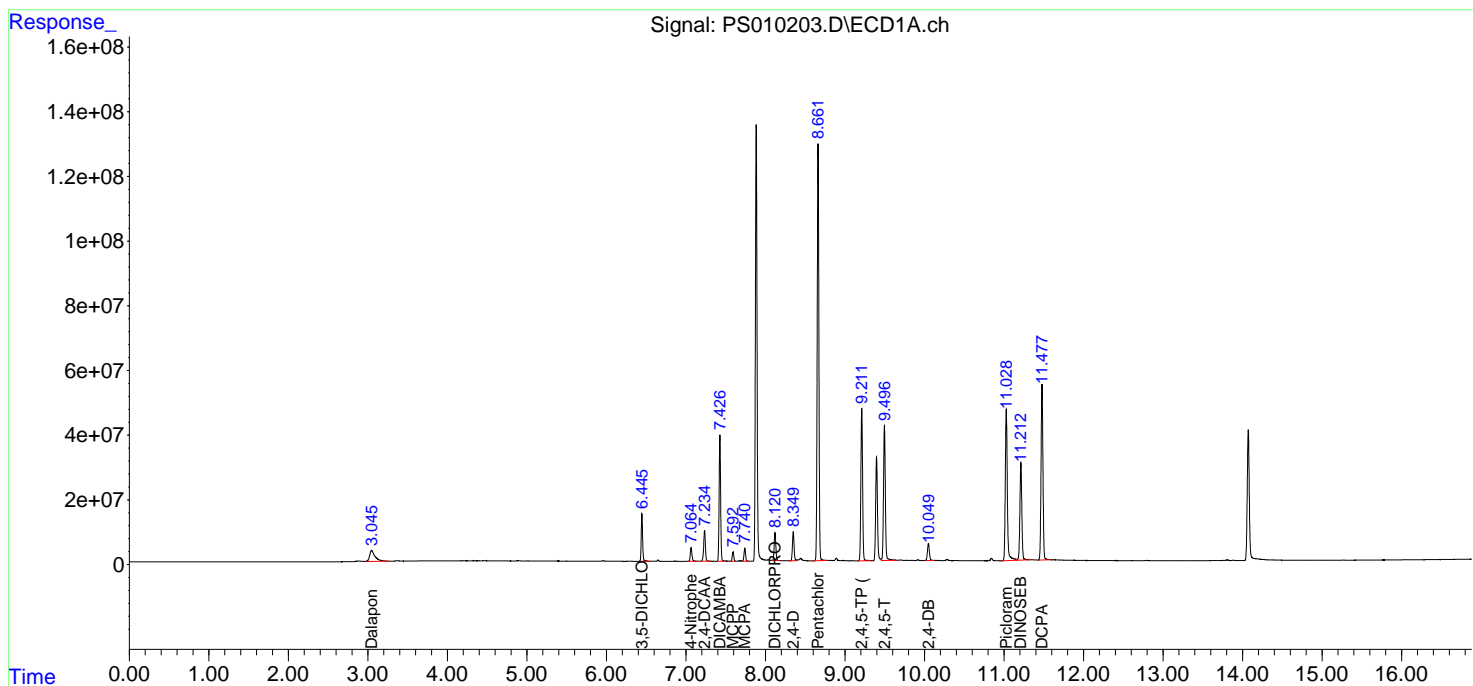
(f)=RT Delta > 1/2 Window (#)=Amounts differ by > 25% (m)=manual int.

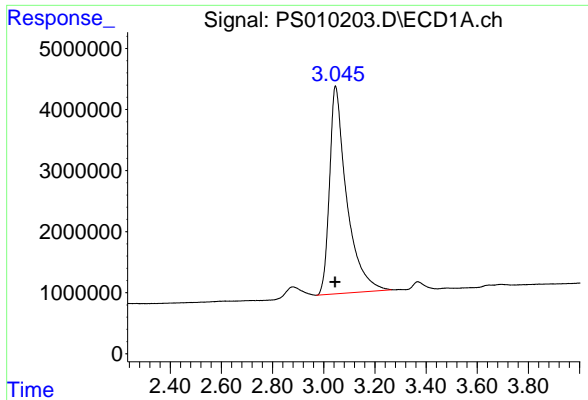
Data Path : Z:\pestpcbsrv\HPCHEM1\ECD_S\Data\PS051120\
 Data File : PS010203.D
 Signal(s) : Signal #1: ECD1A.ch Signal #2: ECD2B.ch
 Acq On : 11 May 2020 12:38
 Operator : DD\AJ
 Sample : HSTDICC200
 Misc :
 ALS Vial : 8 Sample Multiplier: 1

Instrument :
 ECD_S
 ClientSampled :
 HSTDICC200

Integration File signal 1: autoint1.e
 Integration File signal 2: autoint2.e
 Quant Time: May 11 17:04:56 2020
 Quant Method : Z:\pestpcbsrv\HPCHEM1\ECD_S\Method\PS051120.M
 Quant Title : 8080.M
 QLast Update : Mon May 11 17:00:21 2020
 Response via : Initial Calibration
 Integrator: ChemStation

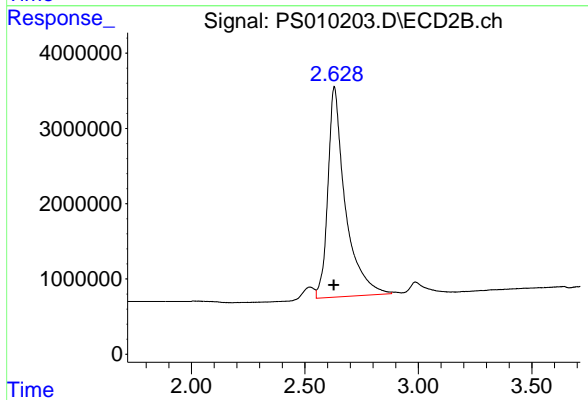
Volume Inj. : 2 µl
 Signal #1 Phase : Rtx-CLPesticides Signal #2 Phase: Rtx-CLPesticides2
 Signal #1 Info : 30M x 0.32mm x0.5 Signal #2 Info : 30M x 0.32mm x 0.25µm



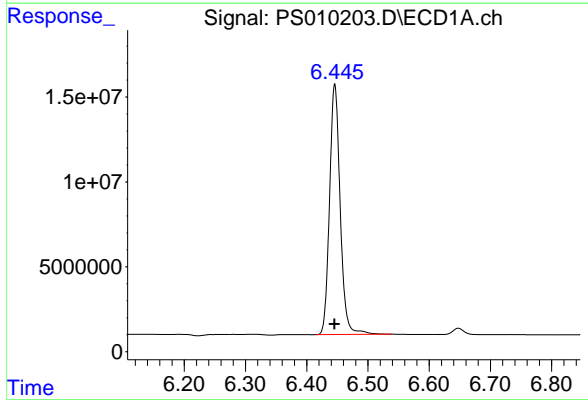


#1 Dalapon
R.T.: 3.046 min
Delta R.T.: 0.000 min
Response: 158206941
Conc: 176.56 ng/ml

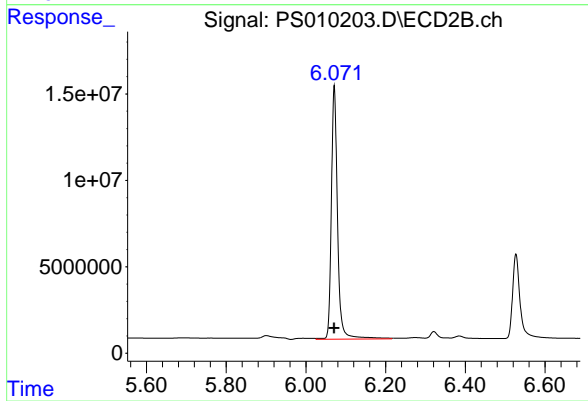
Instrument :
ECD_S
ClientSampleId :
HSTDICC200



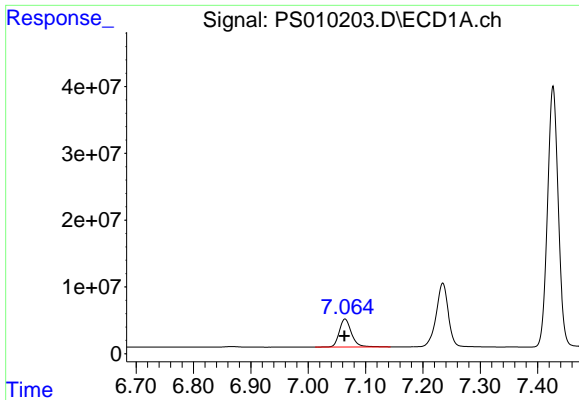
#1 Dalapon
R.T.: 2.629 min
Delta R.T.: 0.001 min
Response: 148944390
Conc: 184.61 ng/ml



#2 3,5-DICHLOROBENZOIC ACID
R.T.: 6.446 min
Delta R.T.: 0.000 min
Response: 178250791
Conc: 184.33 ng/ml



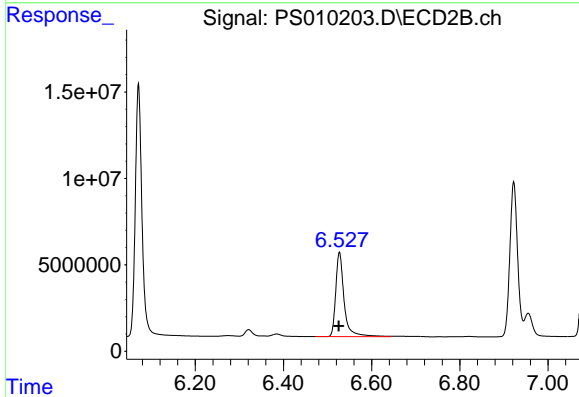
#2 3,5-DICHLOROBENZOIC ACID
R.T.: 6.071 min
Delta R.T.: 0.000 min
Response: 158325796
Conc: 194.22 ng/ml



#3 4-Nitrophenol

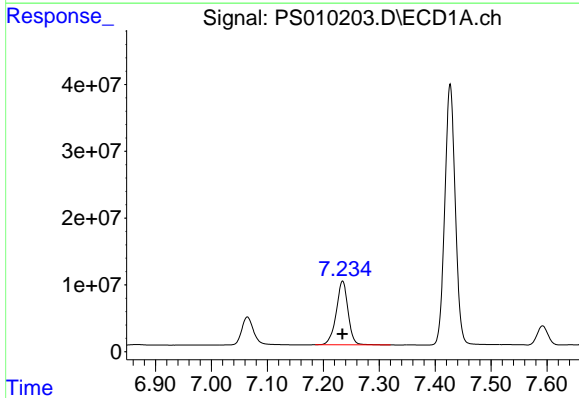
R.T.: 7.064 min
Delta R.T.: 0.001 min
Response: 61612141
Conc: 186.79 ng/ml

Instrument :
ECD_S
ClientSampleId :
HSTDICC200



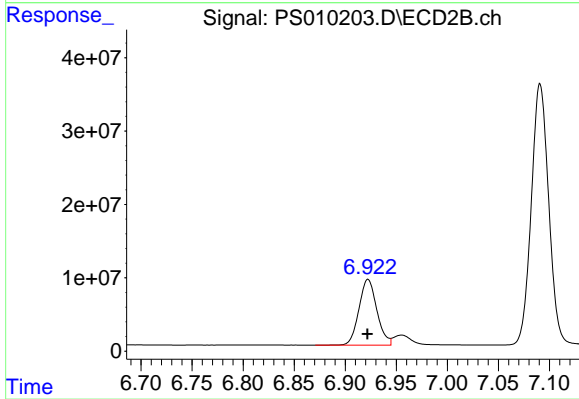
#3 4-Nitrophenol

R.T.: 6.527 min
Delta R.T.: 0.001 min
Response: 64643250
Conc: 195.49 ng/ml



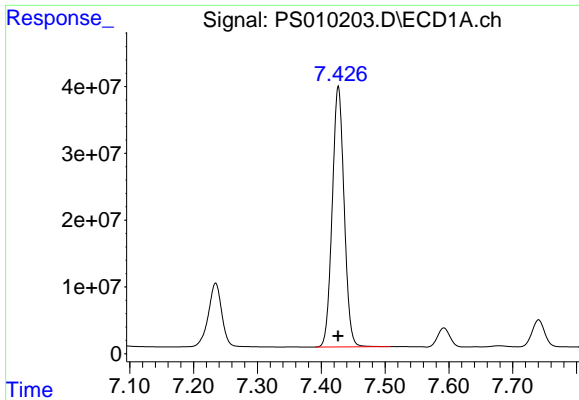
#4 2,4-DCAA

R.T.: 7.234 min
Delta R.T.: 0.000 min
Response: 139579232
Conc: 199.13 ng/ml



#4 2,4-DCAA

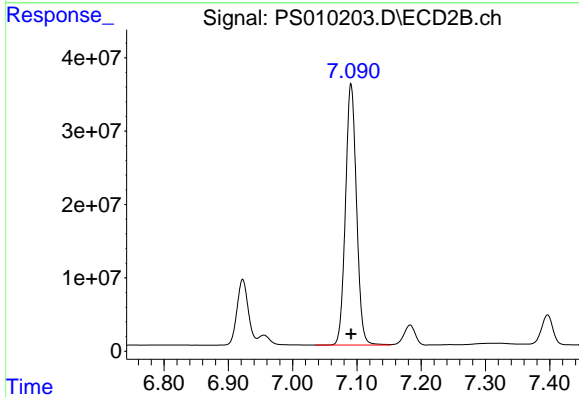
R.T.: 6.922 min
Delta R.T.: 0.000 min
Response: 109236868
Conc: 205.13 ng/ml



#5 DICAMBA

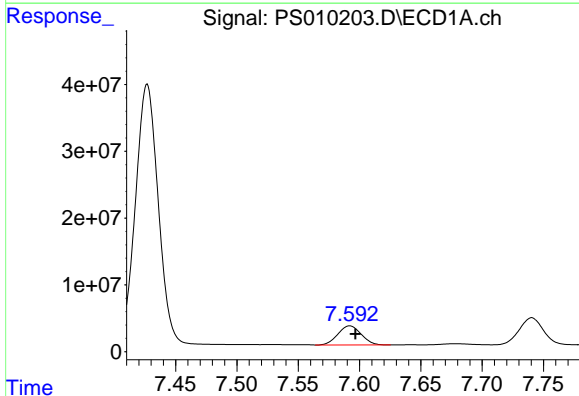
R.T.: 7.427 min
 Delta R.T.: 0.000 min
 Response: 506143792
 Conc: 183.35 ng/ml

Instrument :
 ECD_S
 ClientSampleId :
 HSTDICC200



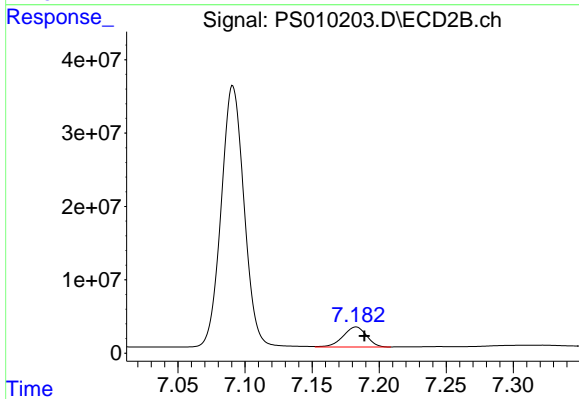
#5 DICAMBA

R.T.: 7.091 min
 Delta R.T.: 0.000 min
 Response: 424705834
 Conc: 193.07 ng/ml



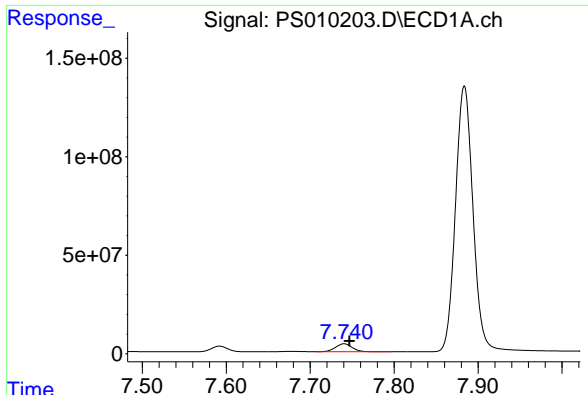
#6 MCP

R.T.: 7.592 min
 Delta R.T.: -0.004 min
 Response: 37816898
 Conc: 17.20 ug/ml



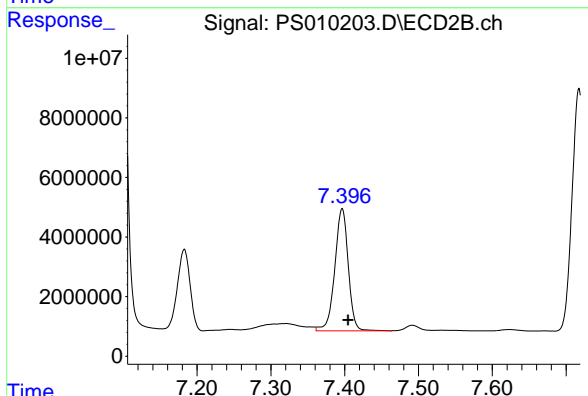
#6 MCP

R.T.: 7.183 min
 Delta R.T.: -0.006 min
 Response: 33464705
 Conc: 18.27 ug/ml

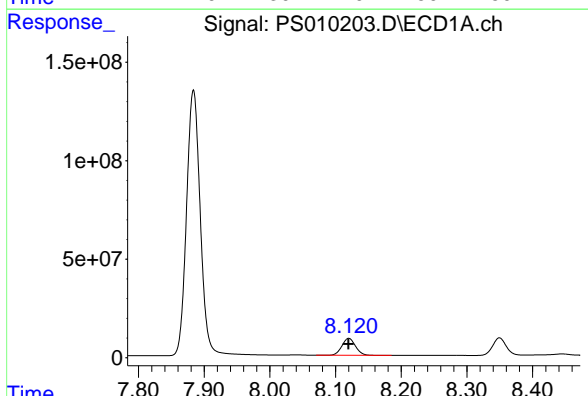


#7 MCPA
 R.T.: 7.740 min
 Delta R.T.: -0.006 min
 Response: 55876853
 Conc: 17.94 ug/ml

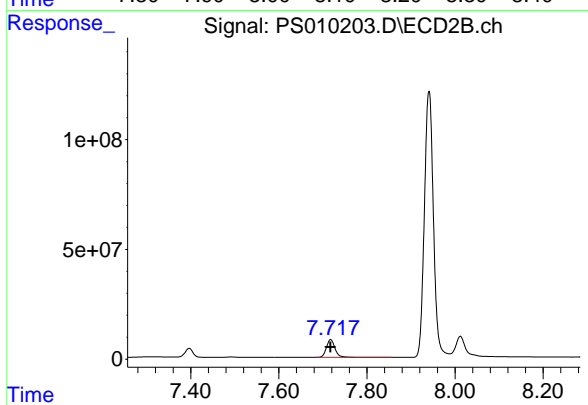
Instrument :
 ECD_S
 ClientSampleId :
 HSTDICC200



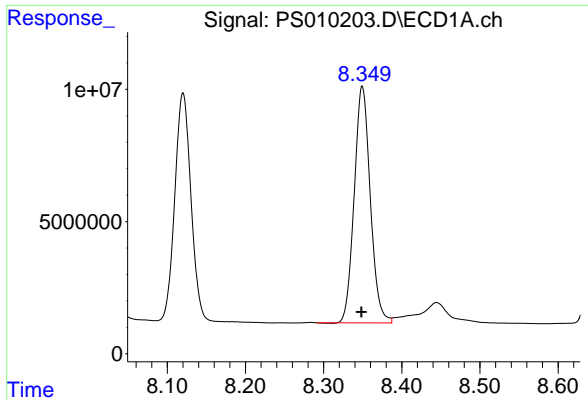
#7 MCPA
 R.T.: 7.397 min
 Delta R.T.: -0.008 min
 Response: 52075499
 Conc: 19.52 ug/ml



#8 DICHLORPROP
 R.T.: 8.120 min
 Delta R.T.: 0.000 min
 Response: 122537313
 Conc: 183.69 ng/ml



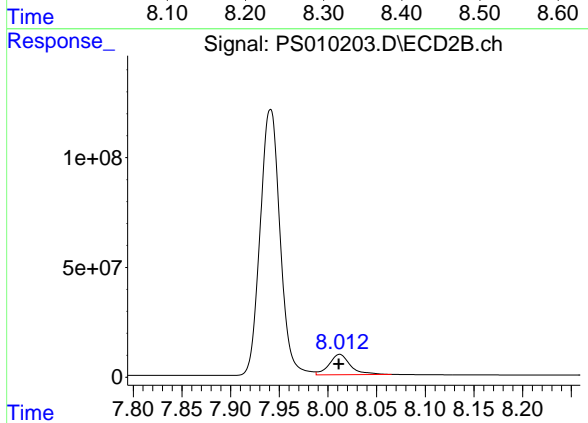
#8 DICHLORPROP
 R.T.: 7.718 min
 Delta R.T.: 0.000 min
 Response: 110460559
 Conc: 198.67 ng/ml



#9 2,4-D

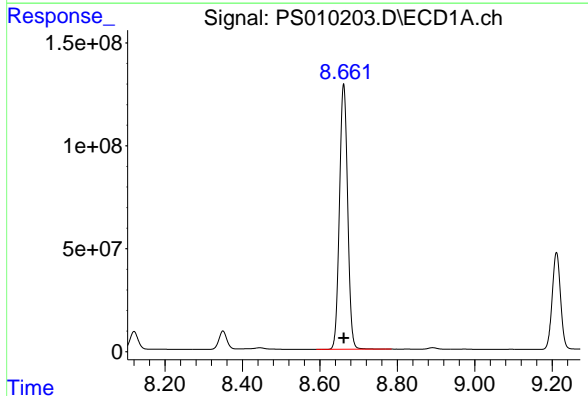
R.T.: 8.350 min
Delta R.T.: 0.001 min
Response: 127789034
Conc: 178.52 ng/ml

Instrument :
ECD_S
ClientSampleId :
HSTDICC200



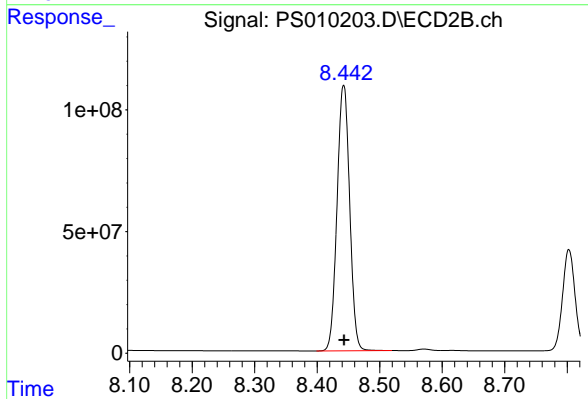
#9 2,4-D

R.T.: 8.012 min
Delta R.T.: 0.000 min
Response: 140499013
Conc: 206.09 ng/ml



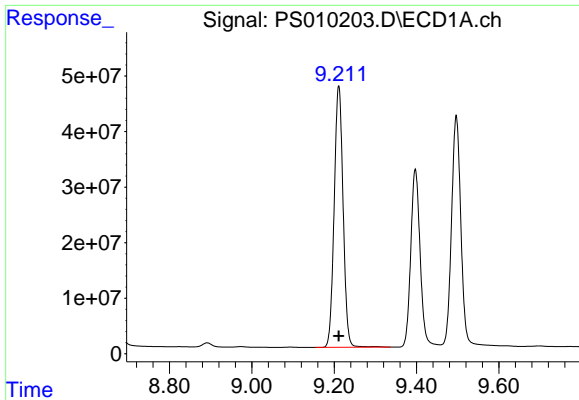
#10 Pentachlorophenol

R.T.: 8.661 min
Delta R.T.: 0.000 min
Response: 1903694387
Conc: 208.87 ng/ml



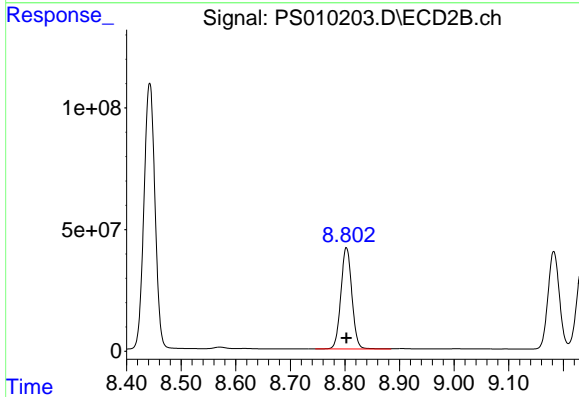
#10 Pentachlorophenol

R.T.: 8.442 min
Delta R.T.: 0.000 min
Response: 1527994041
Conc: 226.78 ng/ml

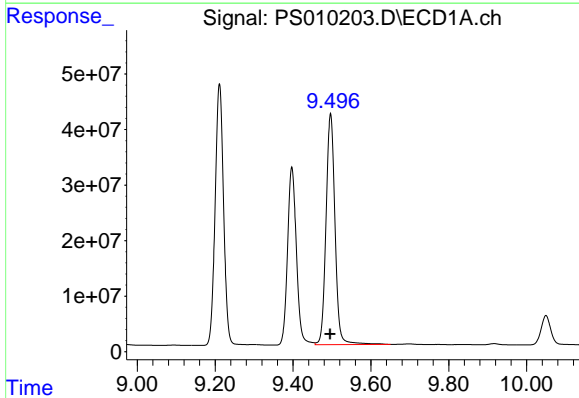


#11 2,4,5-TP (SILVEX)
 R.T.: 9.211 min
 Delta R.T.: 0.000 min
 Response: 708156791
 Conc: 190.50 ng/ml

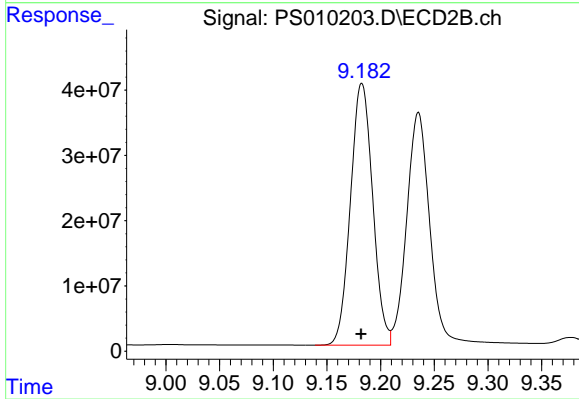
Instrument :
 ECD_S
 ClientSampleId :
 HSTDICC200



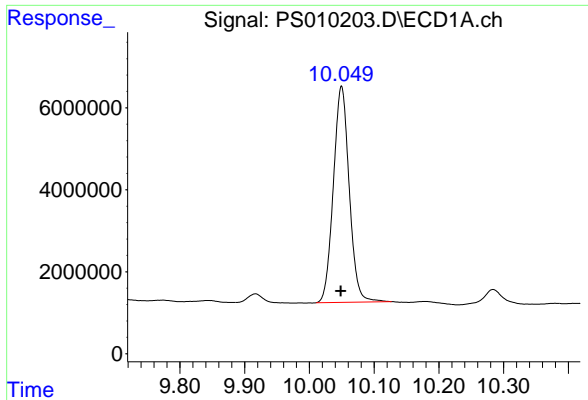
#11 2,4,5-TP (SILVEX)
 R.T.: 8.803 min
 Delta R.T.: 0.000 min
 Response: 583486279
 Conc: 200.51 ng/ml



#12 2,4,5-T
 R.T.: 9.496 min
 Delta R.T.: 0.000 min
 Response: 664383280
 Conc: 186.39 ng/ml



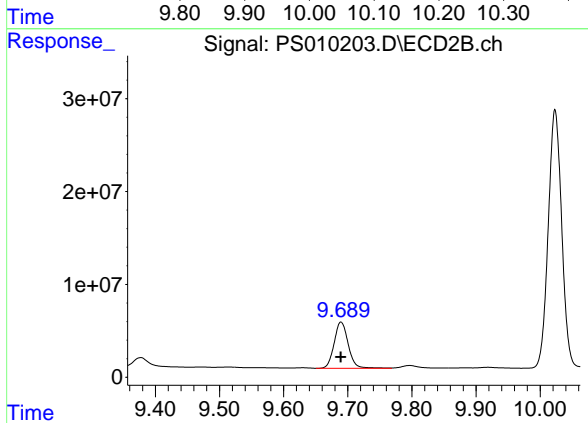
#12 2,4,5-T
 R.T.: 9.182 min
 Delta R.T.: 0.000 min
 Response: 577877163
 Conc: 197.09 ng/ml



#13 2,4-DB

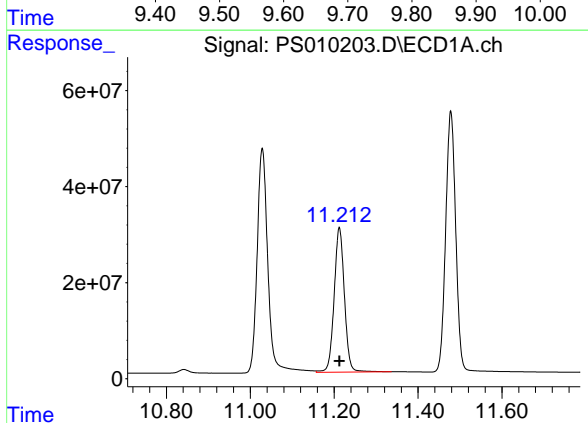
R.T.: 10.050 min
Delta R.T.: 0.001 min
Response: 89690669
Conc: 176.98 ng/ml

Instrument :
ECD_S
ClientSampleId :
HSTDICC200



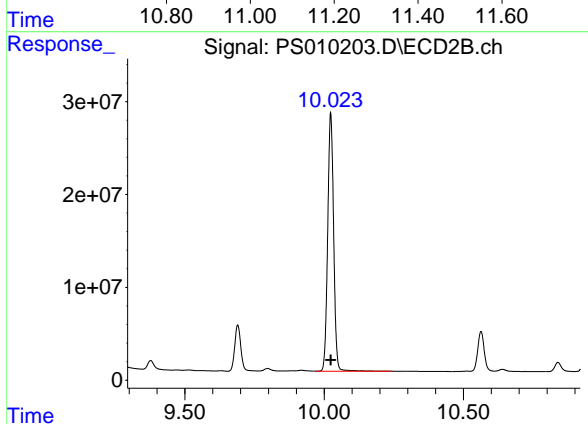
#13 2,4-DB

R.T.: 9.689 min
Delta R.T.: 0.000 min
Response: 75952654
Conc: 191.79 ng/ml



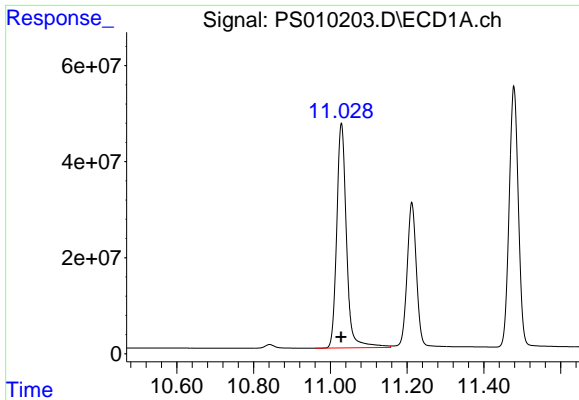
#14 DINOSEB

R.T.: 11.212 min
Delta R.T.: 0.000 min
Response: 513350930
Conc: 185.77 ng/ml



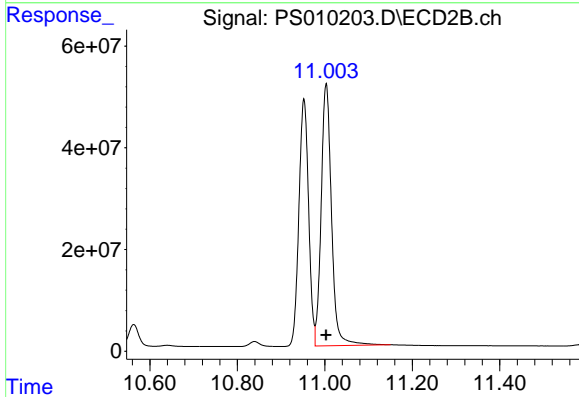
#14 DINOSEB

R.T.: 10.023 min
Delta R.T.: 0.000 min
Response: 410955765
Conc: 191.66 ng/ml

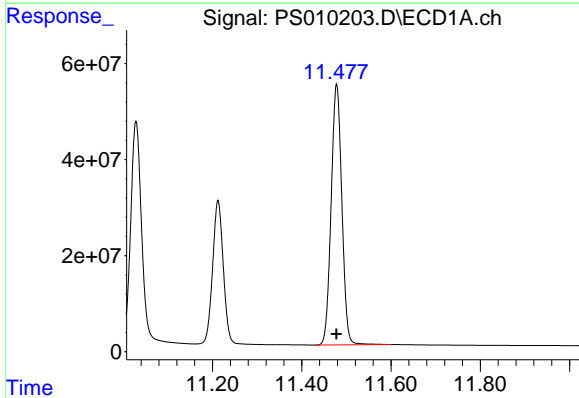


#15 Picloram
 R.T.: 11.029 min
 Delta R.T.: 0.000 min
 Response: 829268375
 Conc: 177.41 ng/ml

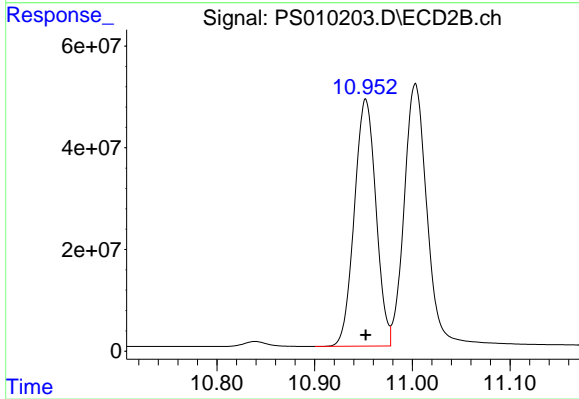
Instrument :
 ECD_S
 ClientSampleId :
 HSTDICC200



#15 Picloram
 R.T.: 11.003 min
 Delta R.T.: 0.000 min
 Response: 846055989
 Conc: 197.73 ng/ml



#16 DCPA
 R.T.: 11.478 min
 Delta R.T.: 0.000 min
 Response: 902488190
 Conc: 198.36 ng/ml



#16 DCPA
 R.T.: 10.952 min
 Delta R.T.: 0.000 min
 Response: 745372658
 Conc: 208.53 ng/ml