

Data Path : Z:\pestpcbsrv\HPCHEM1\ECD\_S\Data\PS051121\  
 Data File : PS014992.D  
 Signal(s) : Signal #1: ECD1A.ch Signal #2: ECD2B.ch  
 Acq On : 11 May 2021 13:23  
 Operator : DD\AJ  
 Sample : HSTDCCC750  
 Misc :  
 ALS Vial : 3 Sample Multiplier: 1

Instrument :  
 ECD\_S  
 ClientSampleId :

Integration File signal 1: autoint1.e  
 Integration File signal 2: autoint2.e  
 Quant Time: May 11 15:11:52 2021  
 Quant Method : Z:\pestpcbsrv\HPCHEM1\ECD\_S\Method\PS051021.M  
 Quant Title : 8080.M  
 QLast Update : Tue May 11 00:04:04 2021  
 Response via : Initial Calibration  
 Integrator: ChemStation

Volume Inj. : 2 µl  
 Signal #1 Phase : Rtx-CLPesticides Signal #2 Phase: Rtx-CLPesticides2  
 Signal #1 Info : 30M x 0.32mm x0.5 Signal #2 Info : 30M x 0.32mm x 0.25µm

	Compound	RT#1	RT#2	Resp#1	Resp#2	ng/ml	ng/ml
-----							
System Monitoring Compounds							
4) S	2,4-DCAA	7.156	6.885	1252.3E6	378.1E6	748.420	781.297
Target Compounds							
1) T	Dalapon	3.003	2.598	1327.2E6	456.8E6	648.870	675.832
2) T	3,5-DICHL...	6.382	6.047	1621.4E6	563.8E6	691.767	729.876
3) T	4-Nitroph...	6.992	6.504	560.9E6	214.7E6	674.616	723.027
5) T	DICAMBA	7.342	7.050	4639.4E6	1585.4E6	708.019	740.253
6) T	MCP P	7.509	7.144	354.1E6	130.8E6	72.423	74.013
7) T	MCPA	7.657	7.360	494.1E6	183.3E6	71.123	72.959
8) T	DICHLORPROP	8.029	7.675	1119.5E6	397.6E6	701.929	735.133
9) T	2,4-D	8.260	7.973	1231.6E6	448.9E6	692.113	737.257
10) T	Pentachlo...	8.563	8.393	16657.4E6	5316.9E6	708.497	737.416
11) T	2,4,5-TP ...	9.107	8.756	6529.5E6	2161.4E6	714.458	749.968
12) T	2,4,5-T	9.394	9.136	6482.8E6	2034.1E6	708.858	762.143
13) T	2,4-DB	9.942	9.642	1233.1E6	266.1E6	710.622	754.430
14) T	DINOSEB	11.088	9.969	4933.4E6	1496.3E6	687.968	730.558
15) T	Picloram	10.919	10.956	8619.5E6	2957.6E6	709.586	742.242
16) T	DCPA	11.353	10.894	9773.5E6	3225.1E6	715.517	756.652
-----							

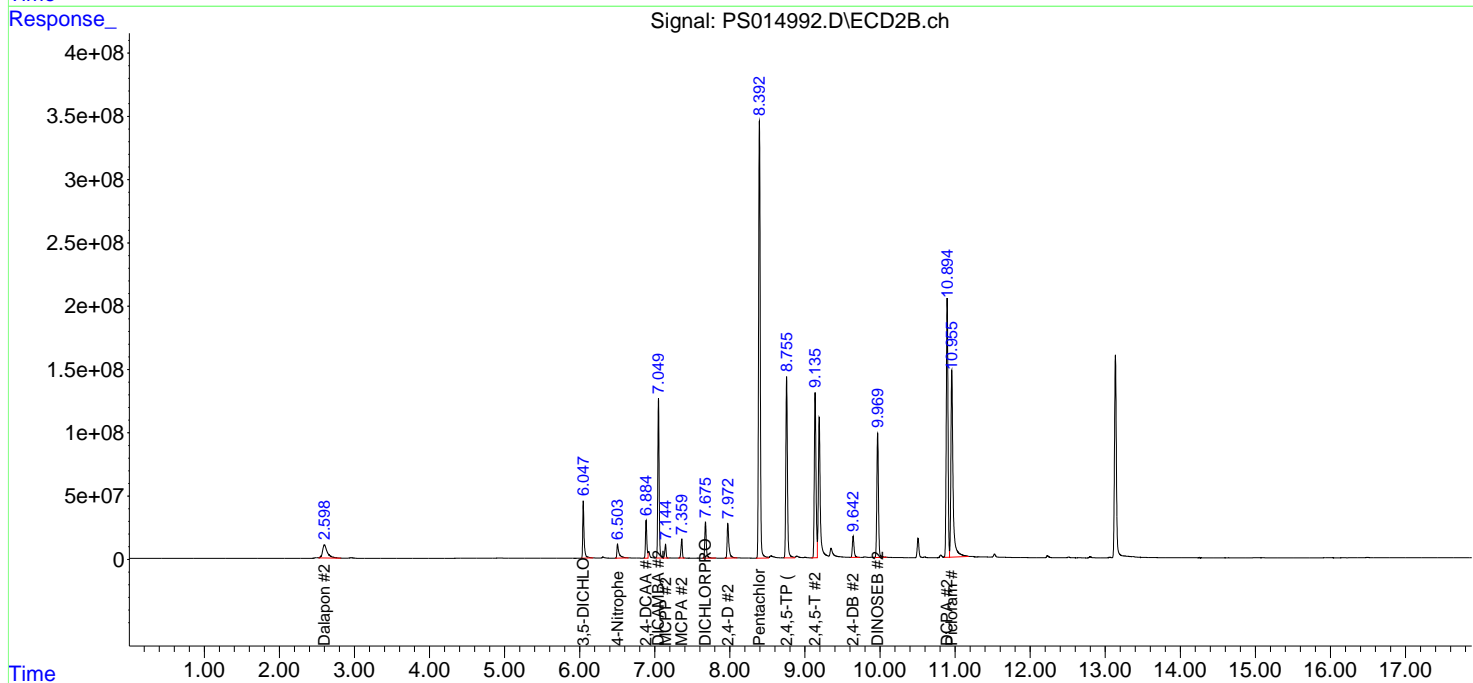
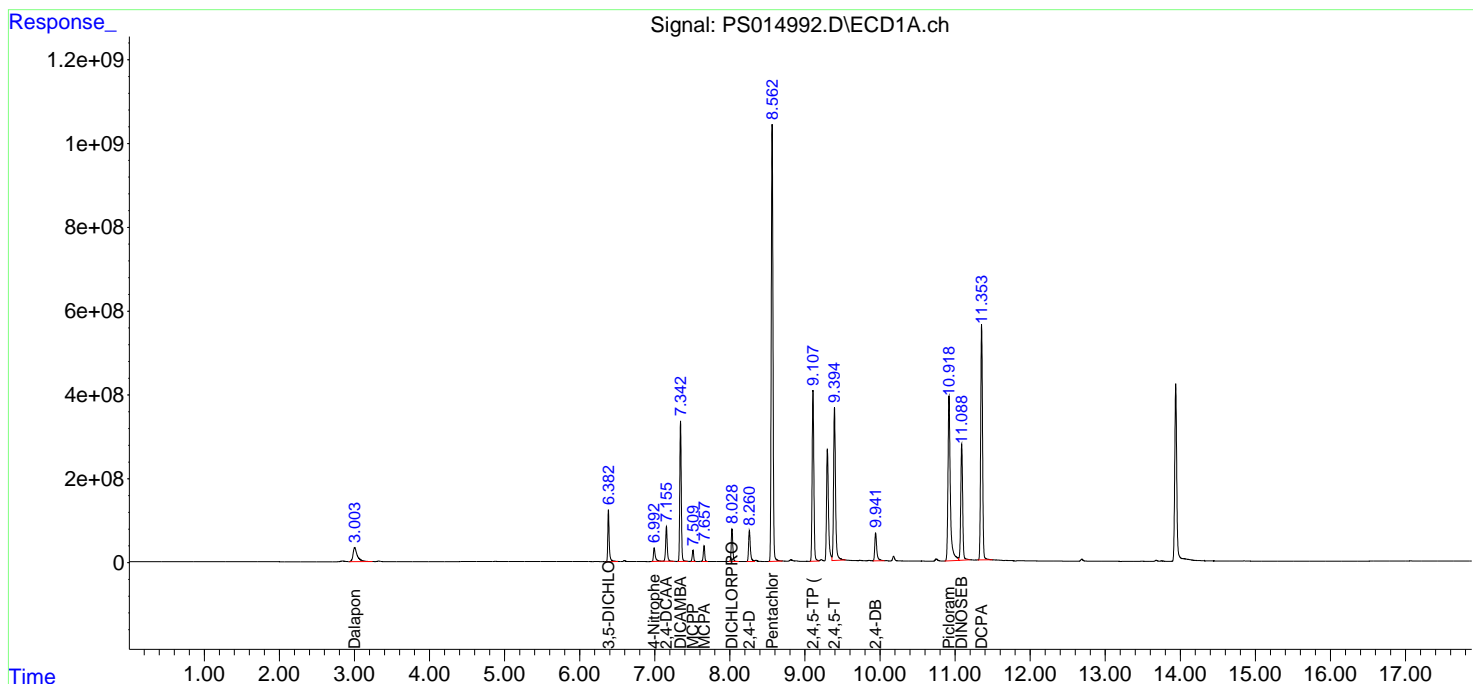
(f)=RT Delta > 1/2 Window (#)=Amounts differ by > 25% (m)=manual int.

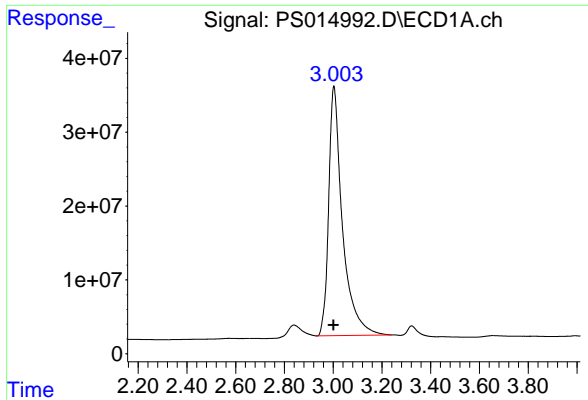
Data Path : Z:\pestpcbsrv\HPCHEM1\ECD\_S\Data\PS051121\  
 Data File : PS014992.D  
 Signal(s) : Signal #1: ECD1A.ch Signal #2: ECD2B.ch  
 Acq On : 11 May 2021 13:23  
 Operator : DD\AJ  
 Sample : HSTDCCC750  
 Misc :  
 ALS Vial : 3 Sample Multiplier: 1

Instrument :  
 ECD\_S  
 ClientSampled :

Integration File signal 1: autoint1.e  
 Integration File signal 2: autoint2.e  
 Quant Time: May 11 15:11:52 2021  
 Quant Method : Z:\pestpcbsrv\HPCHEM1\ECD\_S\Method\PS051021.M  
 Quant Title : 8080.M  
 QLast Update : Tue May 11 00:04:04 2021  
 Response via : Initial Calibration  
 Integrator: ChemStation

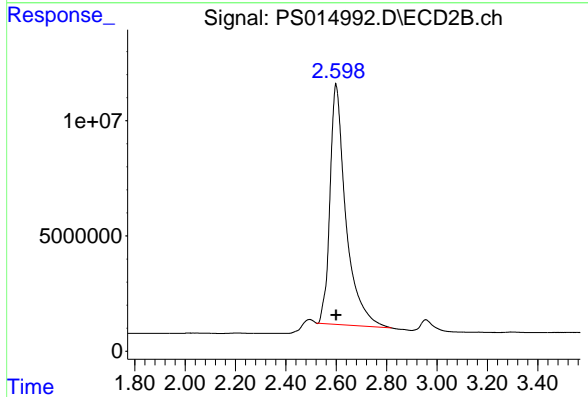
Volume Inj. : 2 µl  
 Signal #1 Phase : Rtx-CLPesticides Signal #2 Phase: Rtx-CLPesticides2  
 Signal #1 Info : 30M x 0.32mm x0.5 Signal #2 Info : 30M x 0.32mm x 0.25µm



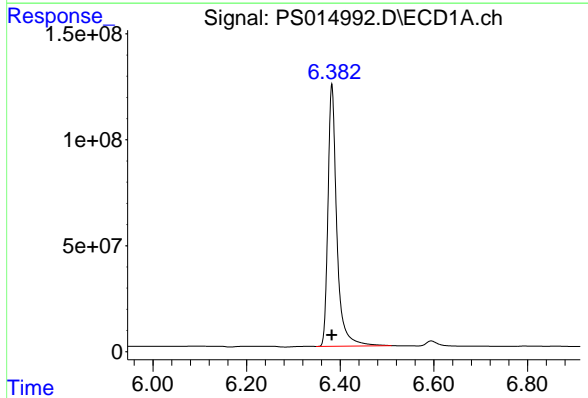


#1 Dalapon  
R.T.: 3.003 min  
Delta R.T.: 0.002 min  
Response: 1327193095  
Conc: 648.87 ng/ml

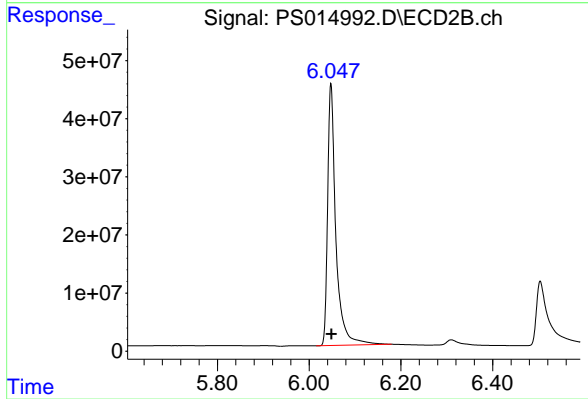
Instrument :  
ECD\_S  
ClientSampleId :



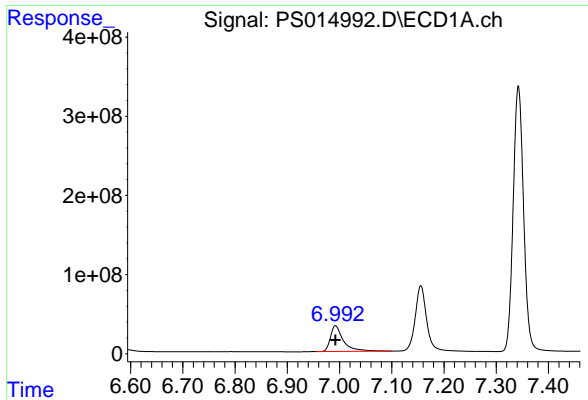
#1 Dalapon  
R.T.: 2.598 min  
Delta R.T.: 0.000 min  
Response: 456803327  
Conc: 675.83 ng/ml



#2 3,5-DICHLOROBENZOIC ACID  
R.T.: 6.382 min  
Delta R.T.: 0.000 min  
Response: 1621374034  
Conc: 691.77 ng/ml

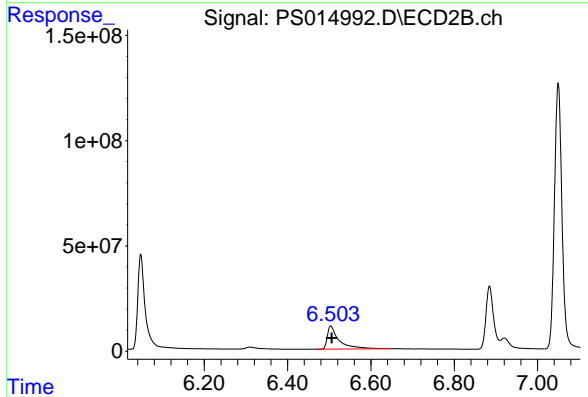


#2 3,5-DICHLOROBENZOIC ACID  
R.T.: 6.047 min  
Delta R.T.: -0.001 min  
Response: 563844353  
Conc: 729.88 ng/ml

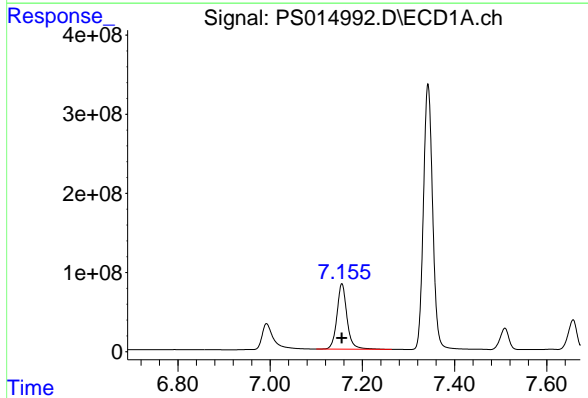


#3 4-Nitrophenol  
 R.T.: 6.992 min  
 Delta R.T.: 0.000 min  
 Response: 560948122  
 Conc: 674.62 ng/ml

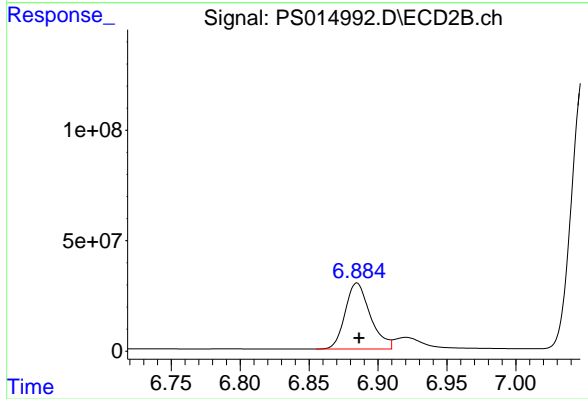
Instrument :  
 ECD\_S  
 ClientSampled :



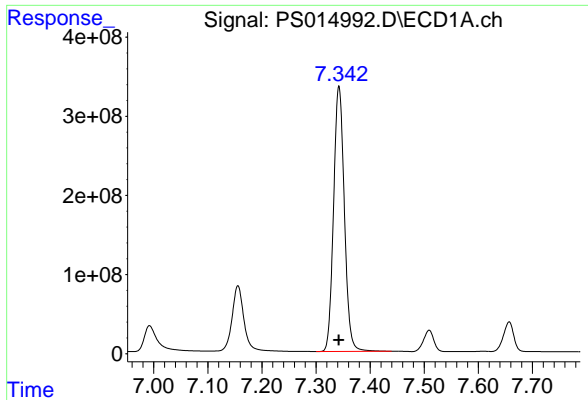
#3 4-Nitrophenol  
 R.T.: 6.504 min  
 Delta R.T.: -0.003 min  
 Response: 214733062  
 Conc: 723.03 ng/ml



#4 2,4-DCAA  
 R.T.: 7.156 min  
 Delta R.T.: 0.000 min  
 Response: 1252293364  
 Conc: 748.42 ng/ml



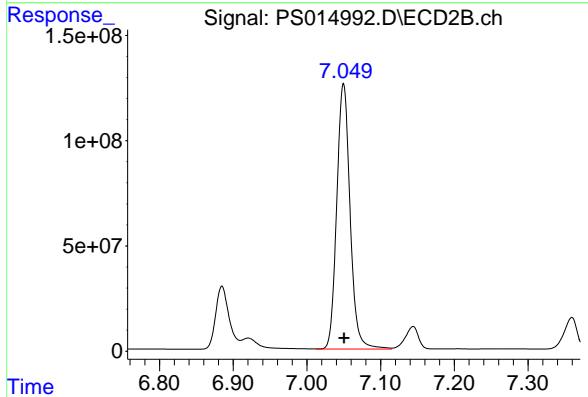
#4 2,4-DCAA  
 R.T.: 6.885 min  
 Delta R.T.: -0.001 min  
 Response: 378079621  
 Conc: 781.30 ng/ml



#5 DICAMBA

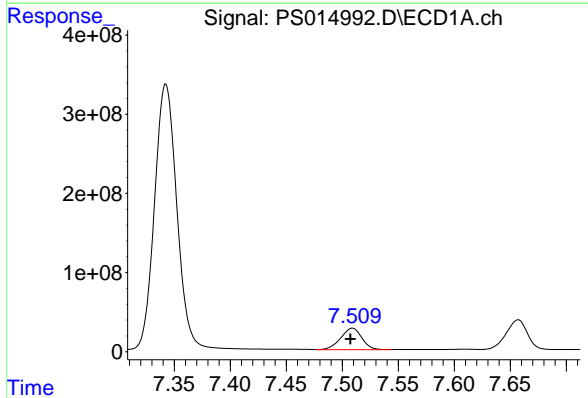
R.T.: 7.342 min  
 Delta R.T.: 0.000 min  
 Response: 4639367264  
 Conc: 708.02 ng/ml

Instrument :  
 ECD\_S  
 ClientSampled :



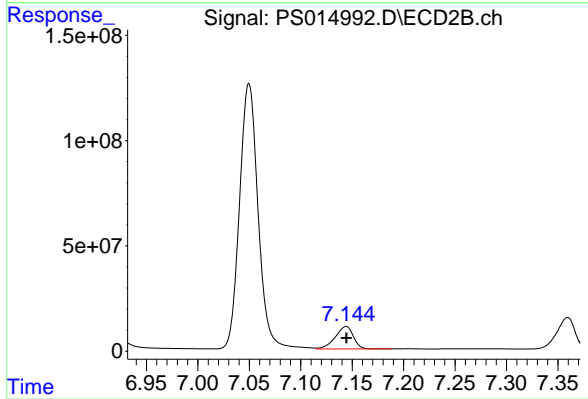
#5 DICAMBA

R.T.: 7.050 min  
 Delta R.T.: 0.000 min  
 Response: 1585429663  
 Conc: 740.25 ng/ml



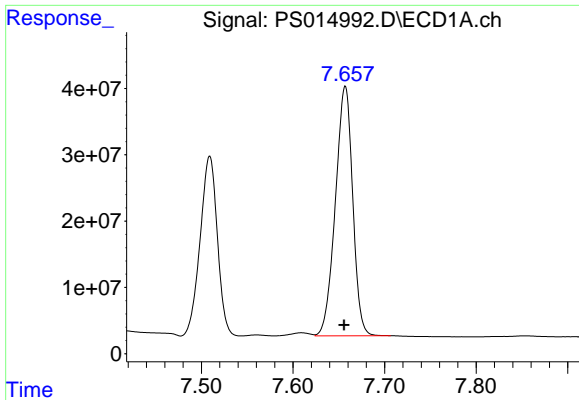
#6 MCPP

R.T.: 7.509 min  
 Delta R.T.: 0.002 min  
 Response: 354124976  
 Conc: 72.42 ug/ml



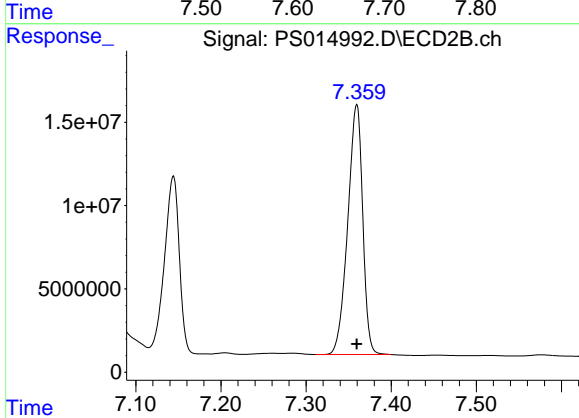
#6 MCPP

R.T.: 7.144 min  
 Delta R.T.: 0.000 min  
 Response: 130813822  
 Conc: 74.01 ug/ml

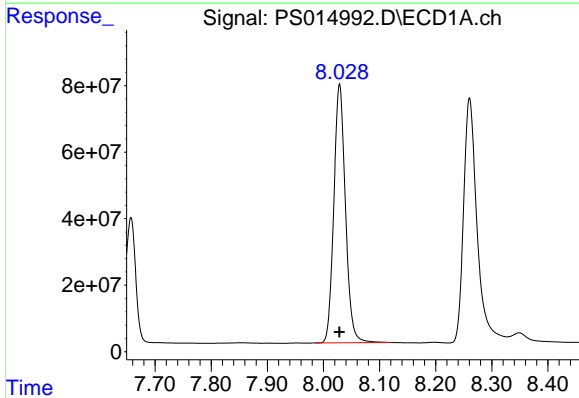


#7 MCPA  
 R.T.: 7.657 min  
 Delta R.T.: 0.001 min  
 Response: 494105520  
 Conc: 71.12 ug/ml

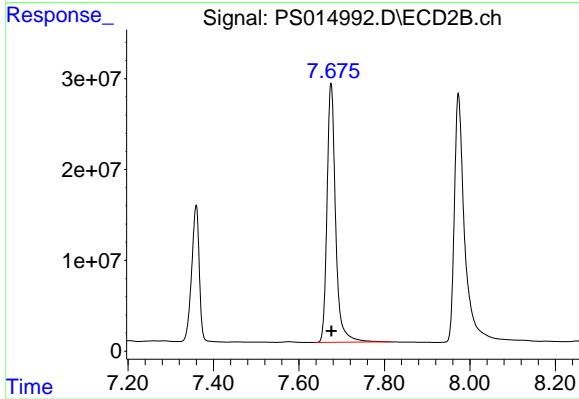
Instrument :  
 ECD\_S  
 ClientSampled :



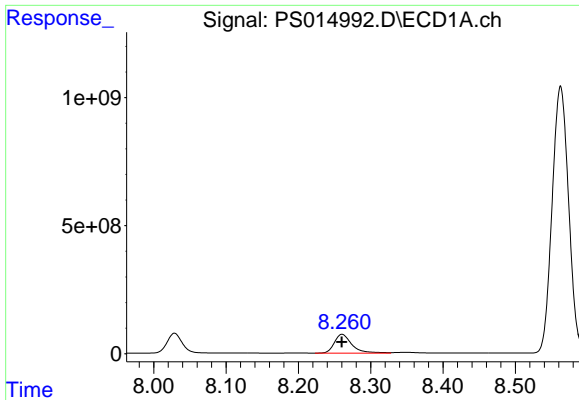
#7 MCPA  
 R.T.: 7.360 min  
 Delta R.T.: 0.000 min  
 Response: 183262775  
 Conc: 72.96 ug/ml



#8 DICHLORPROP  
 R.T.: 8.029 min  
 Delta R.T.: 0.000 min  
 Response: 1119511246  
 Conc: 701.93 ng/ml

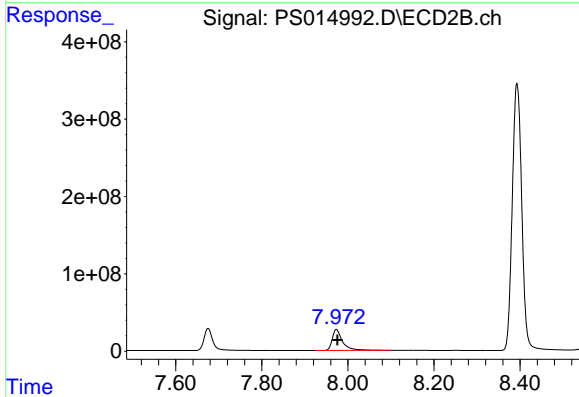


#8 DICHLORPROP  
 R.T.: 7.675 min  
 Delta R.T.: 0.000 min  
 Response: 397554391  
 Conc: 735.13 ng/ml

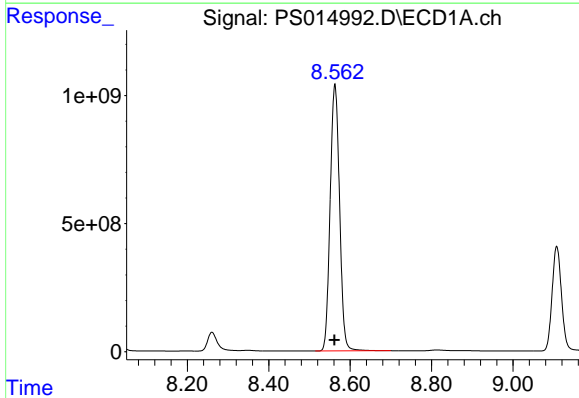


#9 2,4-D  
 R.T.: 8.260 min  
 Delta R.T.: 0.000 min  
 Response: 1231635148  
 Conc: 692.11 ng/ml

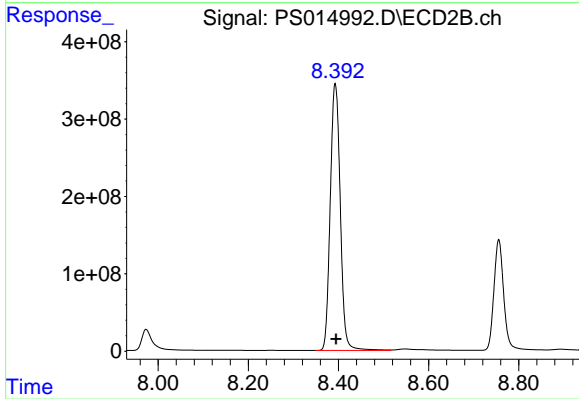
Instrument :  
 ECD\_S  
 ClientSampleId :



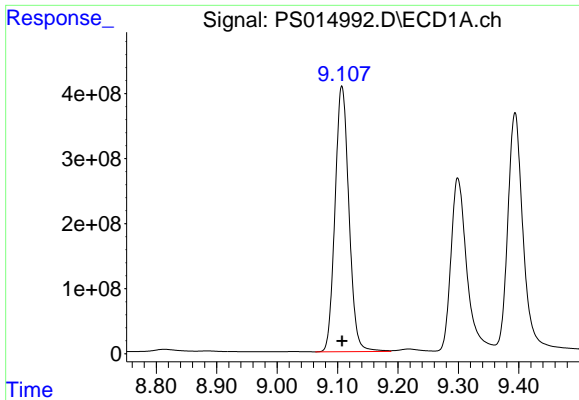
#9 2,4-D  
 R.T.: 7.973 min  
 Delta R.T.: -0.002 min  
 Response: 448936121  
 Conc: 737.26 ng/ml



#10 Pentachlorophenol  
 R.T.: 8.563 min  
 Delta R.T.: 0.000 min  
 Response: 16657361870  
 Conc: 708.50 ng/ml

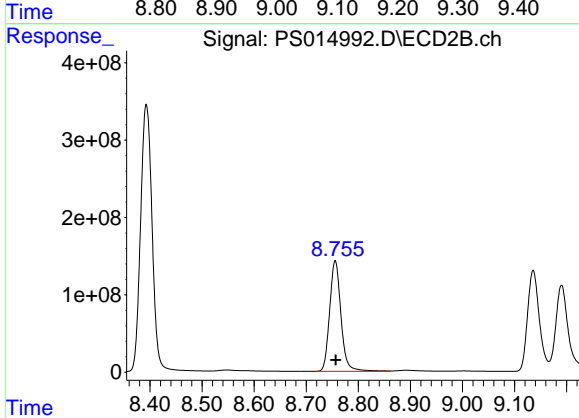


#10 Pentachlorophenol  
 R.T.: 8.393 min  
 Delta R.T.: -0.002 min  
 Response: 5316946410  
 Conc: 737.42 ng/ml

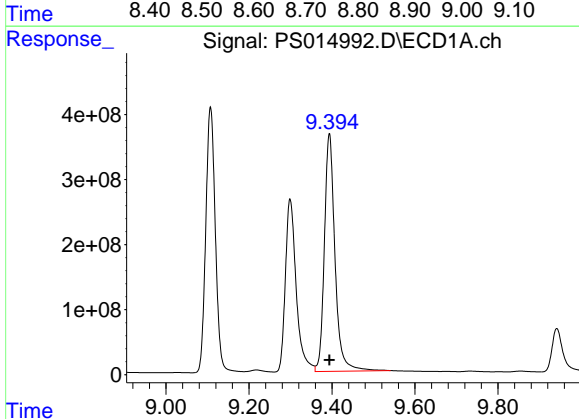


#11 2,4,5-TP (SILVEX)  
 R.T.: 9.107 min  
 Delta R.T.: 0.000 min  
 Response: 6529468370  
 Conc: 714.46 ng/ml

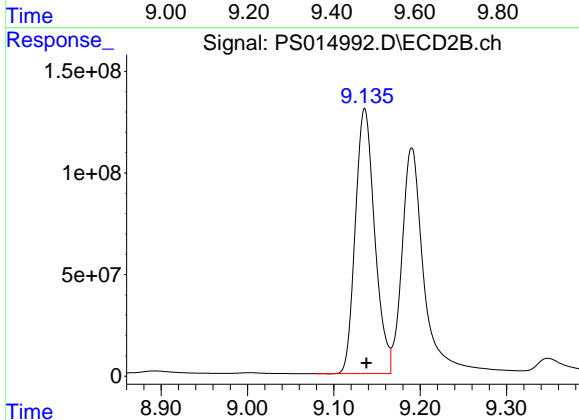
Instrument :  
 ECD\_S  
 ClientSampled :



#11 2,4,5-TP (SILVEX)  
 R.T.: 8.756 min  
 Delta R.T.: 0.000 min  
 Response: 2161449078  
 Conc: 749.97 ng/ml

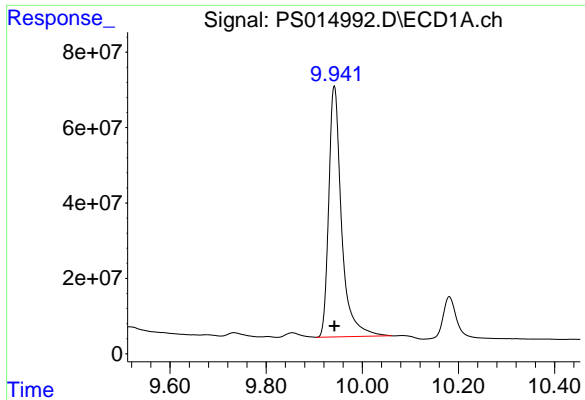


#12 2,4,5-T  
 R.T.: 9.394 min  
 Delta R.T.: 0.000 min  
 Response: 6482795737  
 Conc: 708.86 ng/ml



#12 2,4,5-T  
 R.T.: 9.136 min  
 Delta R.T.: -0.002 min  
 Response: 2034065760  
 Conc: 762.14 ng/ml

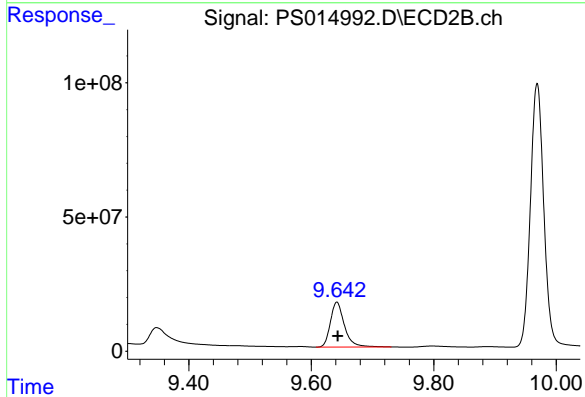




#13 2,4-DB

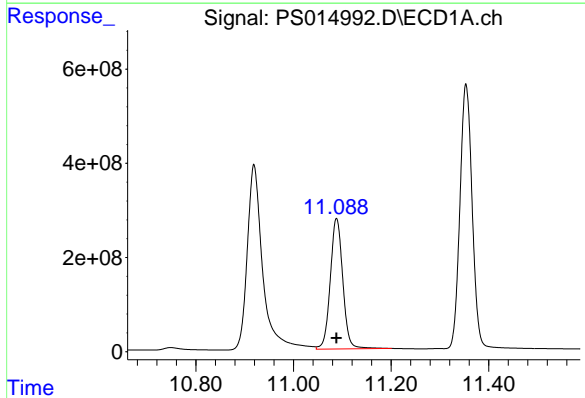
R.T.: 9.942 min  
 Delta R.T.: 0.000 min  
 Response: 1233055378  
 Conc: 710.62 ng/ml

Instrument :  
 ECD\_S  
 ClientSampled :



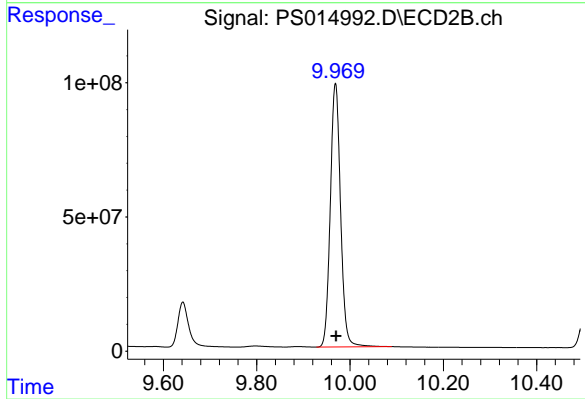
#13 2,4-DB

R.T.: 9.642 min  
 Delta R.T.: -0.001 min  
 Response: 266136297  
 Conc: 754.43 ng/ml



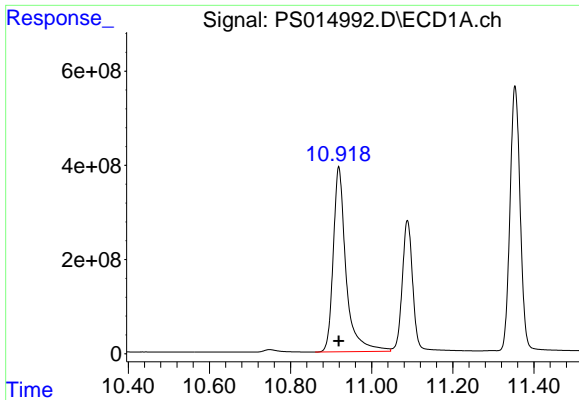
#14 DINOSEB

R.T.: 11.088 min  
 Delta R.T.: 0.000 min  
 Response: 4933418458  
 Conc: 687.97 ng/ml



#14 DINOSEB

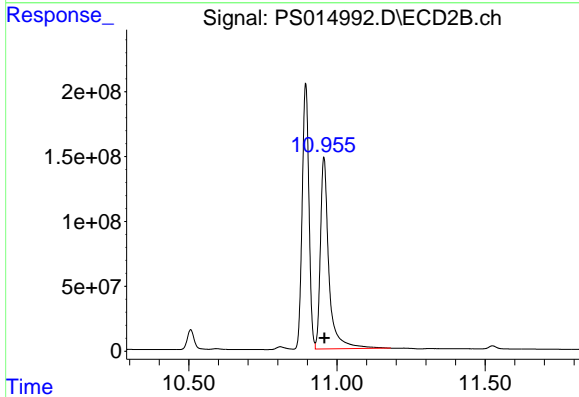
R.T.: 9.969 min  
 Delta R.T.: 0.000 min  
 Response: 1496331318  
 Conc: 730.56 ng/ml



#15 Picloram

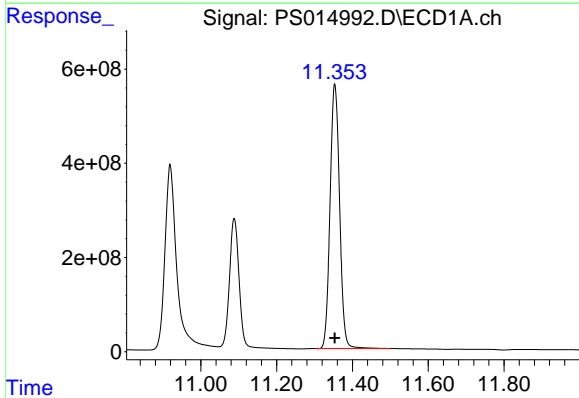
R.T.: 10.919 min  
 Delta R.T.: 0.000 min  
 Response: 8619540669  
 Conc: 709.59 ng/ml

Instrument :  
 ECD\_S  
 ClientSampled :



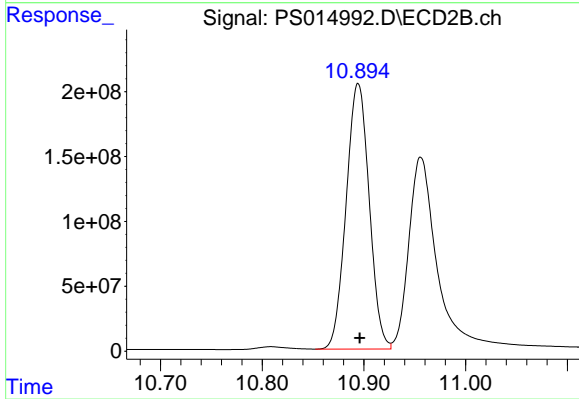
#15 Picloram

R.T.: 10.956 min  
 Delta R.T.: -0.002 min  
 Response: 2957583689  
 Conc: 742.24 ng/ml



#16 DCPA

R.T.: 11.353 min  
 Delta R.T.: 0.000 min  
 Response: 9773541037  
 Conc: 715.52 ng/ml



#16 DCPA

R.T.: 10.894 min  
 Delta R.T.: -0.001 min  
 Response: 3225105466  
 Conc: 756.65 ng/ml