

Data Path : Z:\pestpcbsrv\HPCHEM1\ECD\_S\Data\PS051220\  
 Data File : PS010223.D  
 Signal(s) : Signal #1: ECD1A.ch Signal #2: ECD2B.ch  
 Acq On : 12 May 2020 06:28  
 Operator : DD\AJ  
 Sample : I.BLK  
 Misc :  
 ALS Vial : 14 Sample Multiplier: 1

Instrument :  
 ECD\_S  
 ClientSampleId :

Integration File signal 1: autoint1.e  
 Integration File signal 2: autoint2.e  
 Quant Time: May 12 23:56:37 2020  
 Quant Method : Z:\pestpcbsrv\HPCHEM1\ECD\_S\Method\PS051120.M  
 Quant Title : 8080.M  
 QLast Update : Mon May 11 17:06:53 2020  
 Response via : Initial Calibration  
 Integrator: ChemStation

Volume Inj. : 2 µl  
 Signal #1 Phase : Rtx-CLPesticides Signal #2 Phase: Rtx-CLPesticides2  
 Signal #1 Info : 30M x 0.32mm x0.5 Signal #2 Info : 30M x 0.32mm x 0.25µm

	Compound	RT#1	RT#2	Resp#1	Resp#2	ng/ml	ng/ml
-----							
System Monitoring Compounds							
4) S	2,4-DCAA	7.234	6.921	303.2E6	263.7E6	431.278	491.749
Target Compounds							
3) T	4-Nitroph...	0.000	6.534	0	765583	N.D.	2.304
5) T	DICAMBA	0.000	7.091	0	5022443	N.D.	2.294
6) T	MCPPP	0.000	7.152	0	508565	N.D.	<MDL
7) T	MCPA	0.000	7.390	0	2449029	N.D.	<MDL
8) T	DICHLORPROP	0.000	7.719	0	1282724	N.D.	2.272
9) T	2,4-D	0.000	8.015	0	2586251	N.D.	3.730
10) T	Pentachlo...	0.000	8.442	0	1158670	N.D.	<MDL
11) T	2,4,5-TP ...	9.211	8.804	6450151	7105395	1.750	2.453 #
12) T	2,4,5-T	9.497	9.185	8583179	9018878	2.439	3.102 #
13) T	2,4-DB	0.000	9.693	0	1937416	N.D.	4.861
14) T	DINOSEB	0.000	10.024	0	4377633	N.D.	2.054
15) T	Picloram	11.030	11.006	47391715	55894065	10.337	13.239 #
16) T	DCPA	11.476	10.951	12068600	12048048	2.668	3.370 #
-----							

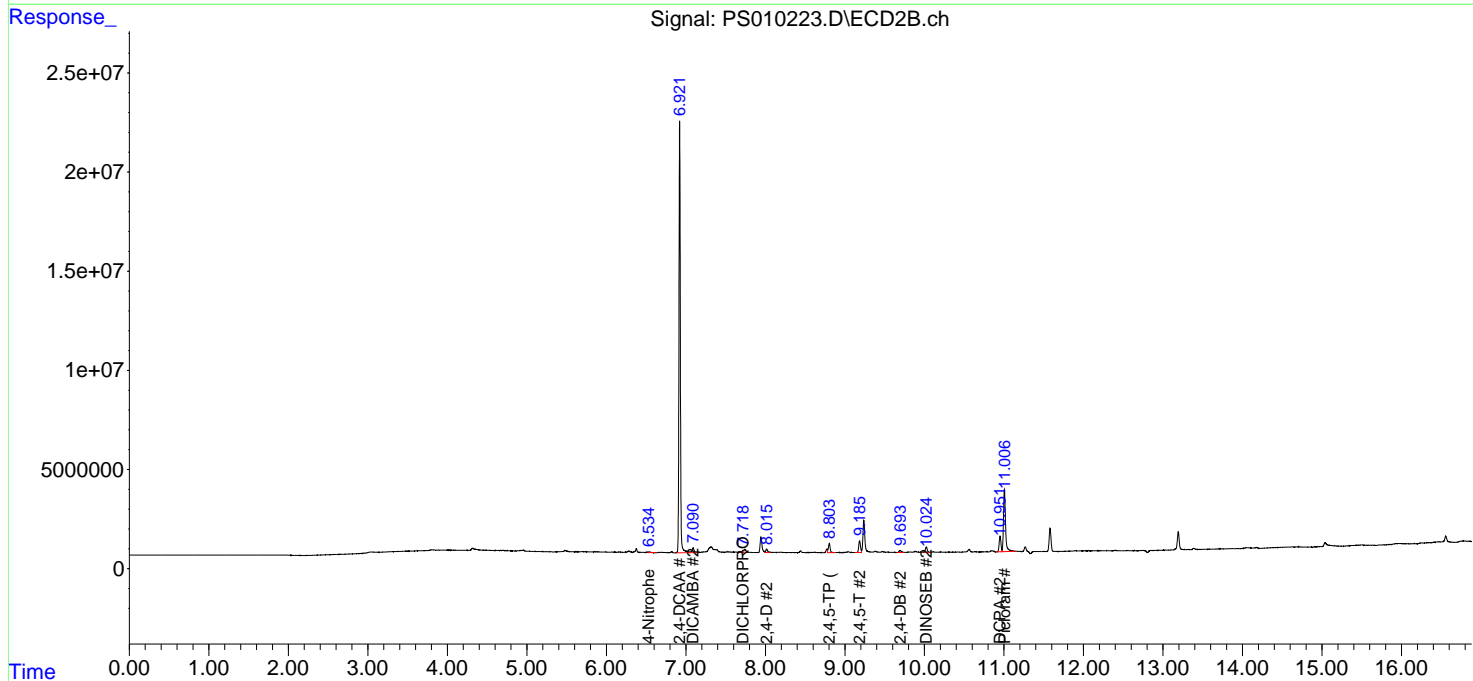
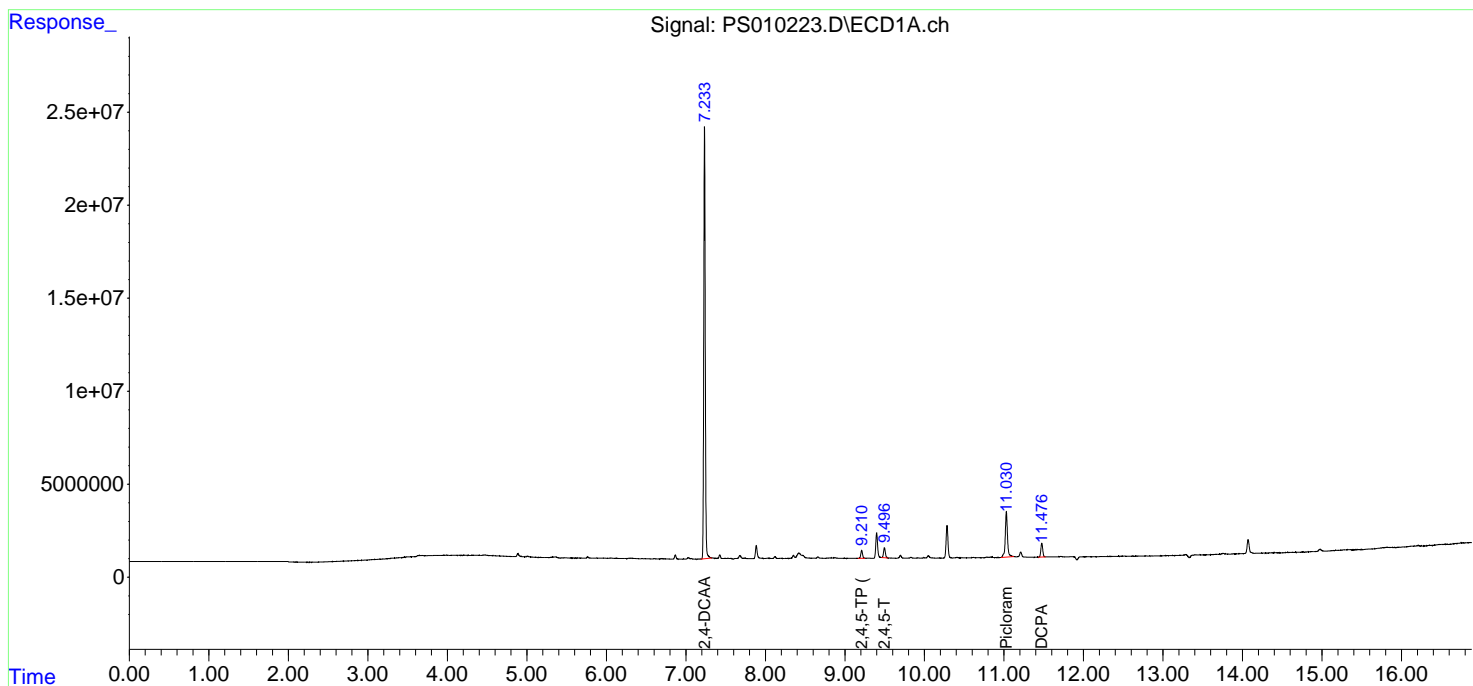
(f)=RT Delta > 1/2 Window (#)=Amounts differ by > 25% (m)=manual int.

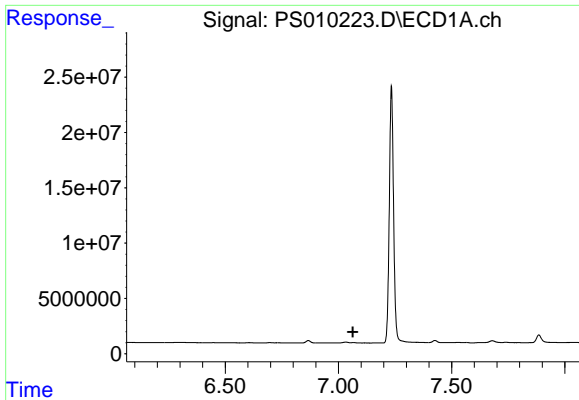
Data Path : Z:\pestpcbsrv\HPCHEM1\ECD\_S\Data\PS051220\  
 Data File : PS010223.D  
 Signal(s) : Signal #1: ECD1A.ch Signal #2: ECD2B.ch  
 Acq On : 12 May 2020 06:28  
 Operator : DD\AJ  
 Sample : I.BLK  
 Misc :  
 ALS Vial : 14 Sample Multiplier: 1

Instrument :  
 ECD\_S  
 ClientSampled :

Integration File signal 1: autoint1.e  
 Integration File signal 2: autoint2.e  
 Quant Time: May 12 23:56:37 2020  
 Quant Method : Z:\pestpcbsrv\HPCHEM1\ECD\_S\Method\PS051120.M  
 Quant Title : 8080.M  
 QLast Update : Mon May 11 17:06:53 2020  
 Response via : Initial Calibration  
 Integrator: ChemStation

Volume Inj. : 2 µl  
 Signal #1 Phase : Rtx-CLPesticides Signal #2 Phase: Rtx-CLPesticides2  
 Signal #1 Info : 30M x 0.32mm x0.5 Signal #2 Info : 30M x 0.32mm x 0.25µm

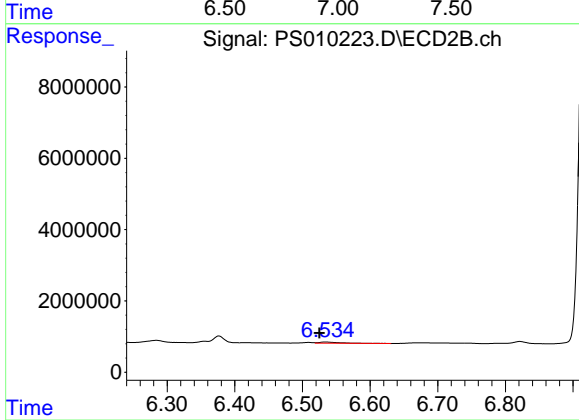




#3 4-Nitrophenol

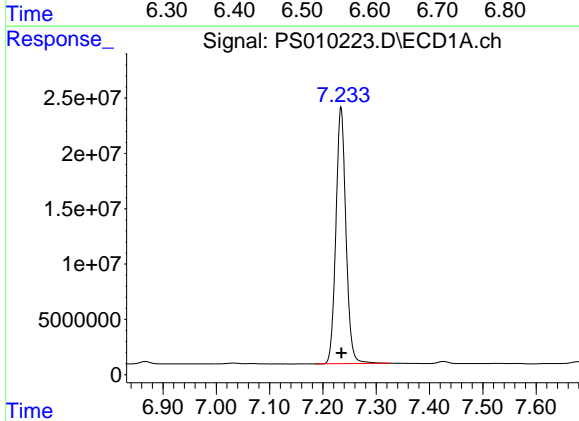
R.T.: 0.000 min  
 Exp R.T.: 7.064 min  
 Response: 0  
 Conc: N.D.

Instrument :  
 ECD\_S  
 ClientSampled :



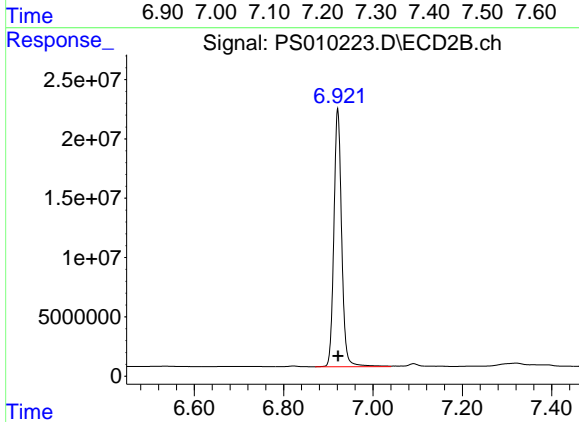
#3 4-Nitrophenol

R.T.: 6.534 min  
 Delta R.T.: 0.009 min  
 Response: 765583  
 Conc: 2.30 ng/ml



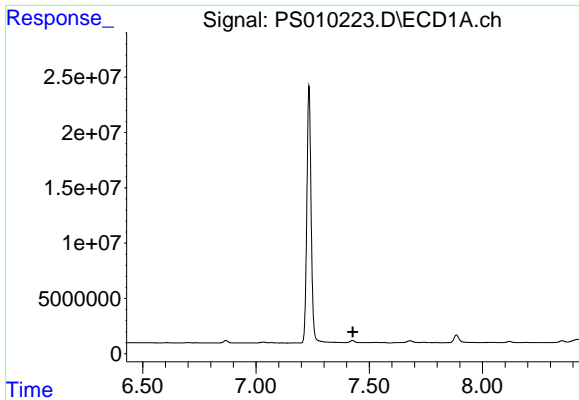
#4 2,4-DCAA

R.T.: 7.234 min  
 Delta R.T.: 0.000 min  
 Response: 303228921  
 Conc: 431.28 ng/ml



#4 2,4-DCAA

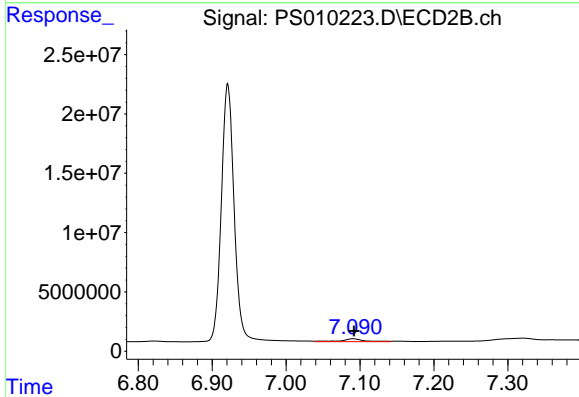
R.T.: 6.921 min  
 Delta R.T.: 0.000 min  
 Response: 263720730  
 Conc: 491.75 ng/ml



#5 DICAMBA

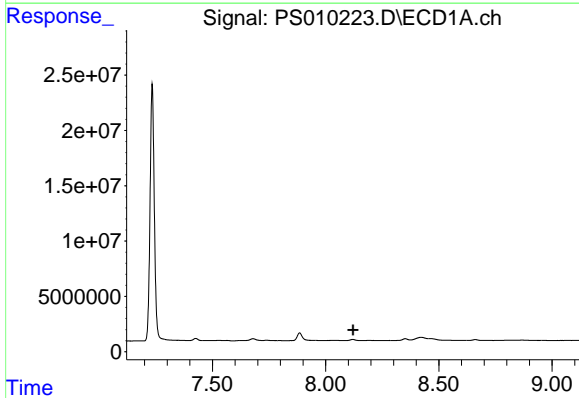
R.T.: 0.000 min  
 Exp R.T. : 7.428 min  
 Response: 0  
 Conc: N.D.

Instrument :  
 ECD\_S  
 ClientSampleId :



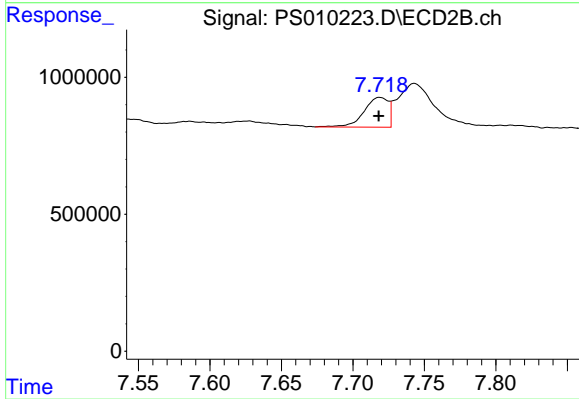
#5 DICAMBA

R.T.: 7.091 min  
 Delta R.T.: -0.001 min  
 Response: 5022443  
 Conc: 2.29 ng/ml



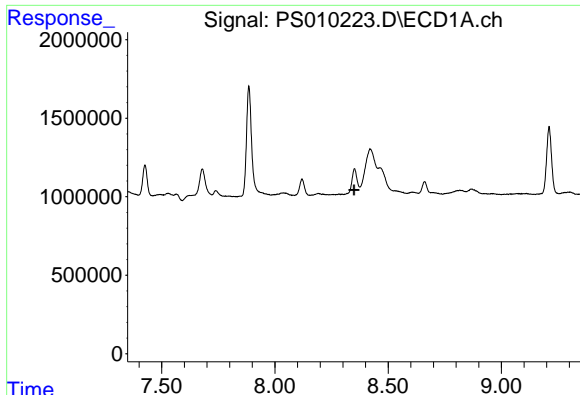
#8 DICHLORPROP

R.T.: 0.000 min  
 Exp R.T. : 8.121 min  
 Response: 0  
 Conc: N.D.



#8 DICHLORPROP

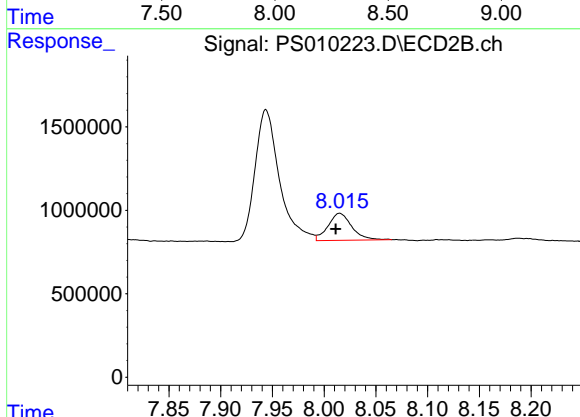
R.T.: 7.719 min  
 Delta R.T.: 0.001 min  
 Response: 1282724  
 Conc: 2.27 ng/ml



#9 2,4-D

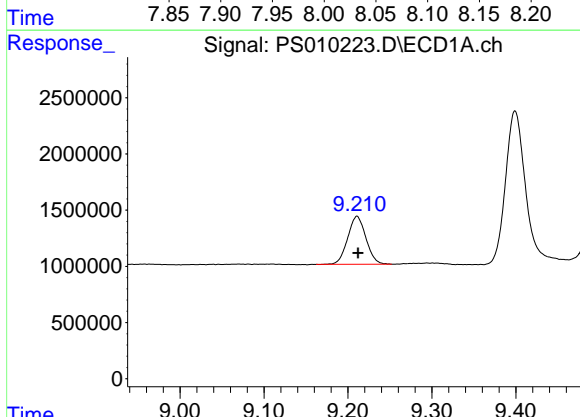
R.T.: 0.000 min  
 Exp R.T.: 8.349 min  
 Response: 0  
 Conc: N.D.

Instrument :  
 ECD\_S  
 ClientSampled :



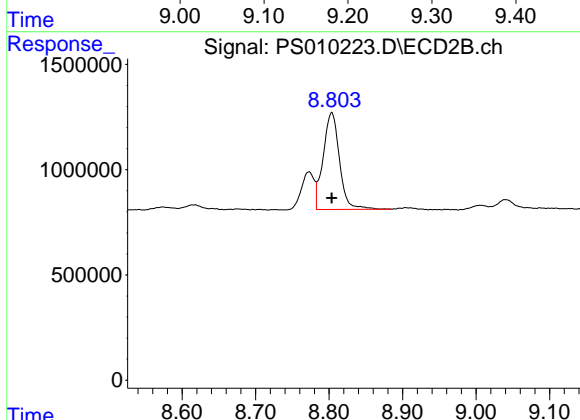
#9 2,4-D

R.T.: 8.015 min  
 Delta R.T.: 0.004 min  
 Response: 2586251  
 Conc: 3.73 ng/ml



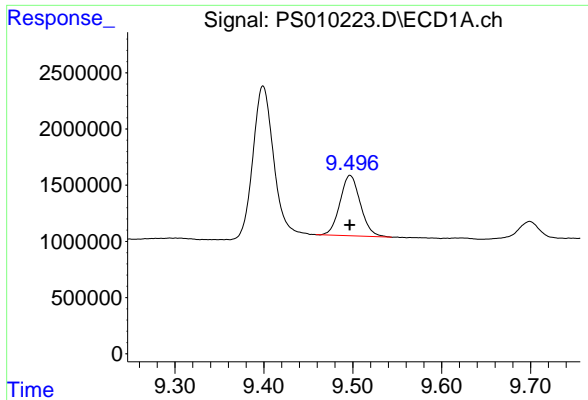
#11 2,4,5-TP (SILVEX)

R.T.: 9.211 min  
 Delta R.T.: -0.001 min  
 Response: 6450151  
 Conc: 1.75 ng/ml



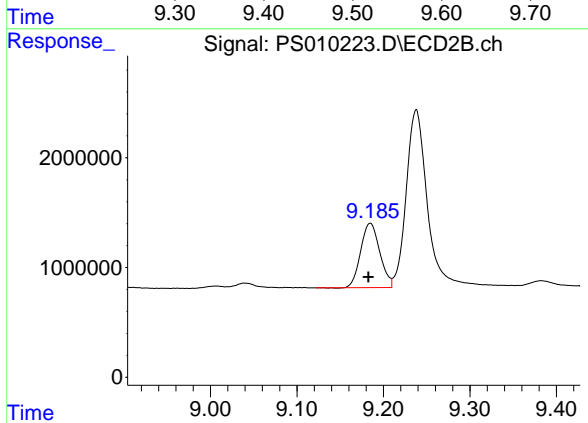
#11 2,4,5-TP (SILVEX)

R.T.: 8.804 min  
 Delta R.T.: 0.000 min  
 Response: 7105395  
 Conc: 2.45 ng/ml

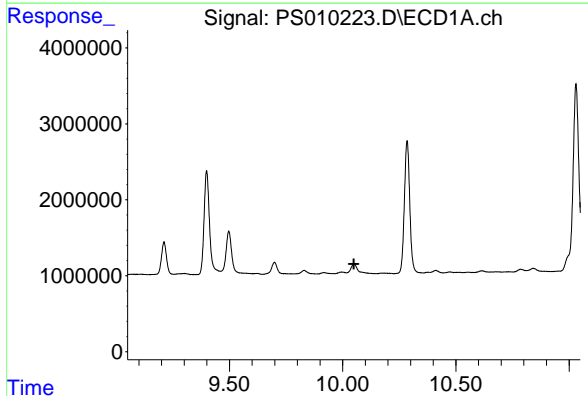


#12 2,4,5-T  
 R.T.: 9.497 min  
 Delta R.T.: 0.000 min  
 Response: 8583179  
 Conc: 2.44 ng/ml

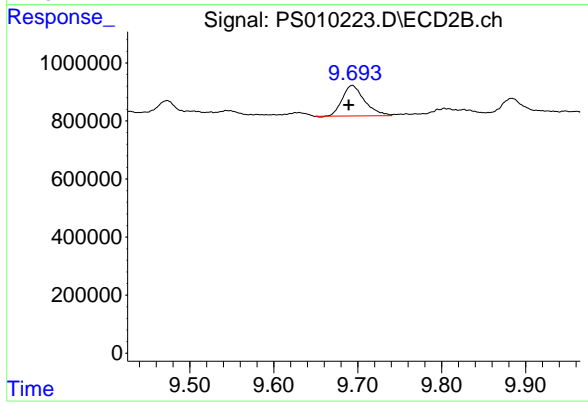
Instrument :  
 ECD\_S  
 ClientSampled :



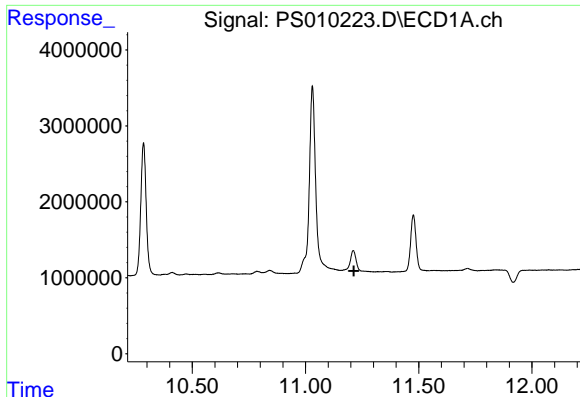
#12 2,4,5-T  
 R.T.: 9.185 min  
 Delta R.T.: 0.002 min  
 Response: 9018878  
 Conc: 3.10 ng/ml



#13 2,4-DB  
 R.T.: 0.000 min  
 Exp R.T. : 10.050 min  
 Response: 0  
 Conc: N.D.



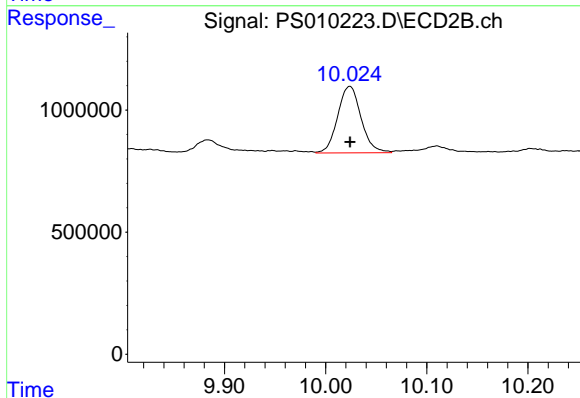
#13 2,4-DB  
 R.T.: 9.693 min  
 Delta R.T.: 0.004 min  
 Response: 1937416  
 Conc: 4.86 ng/ml



#14 DINOSEB

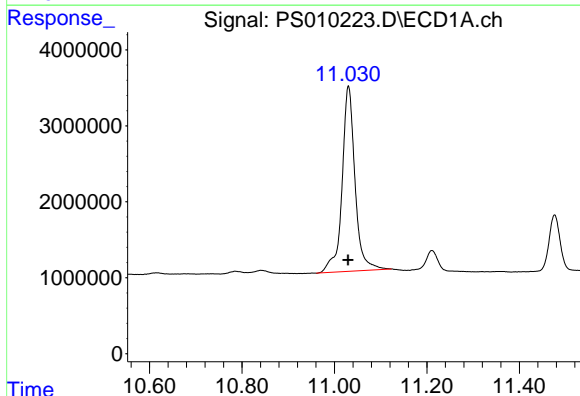
R.T.: 0.000 min  
 Exp R.T.: 11.214 min  
 Response: 0  
 Conc: N.D.

Instrument :  
 ECD\_S  
 ClientSampleId :



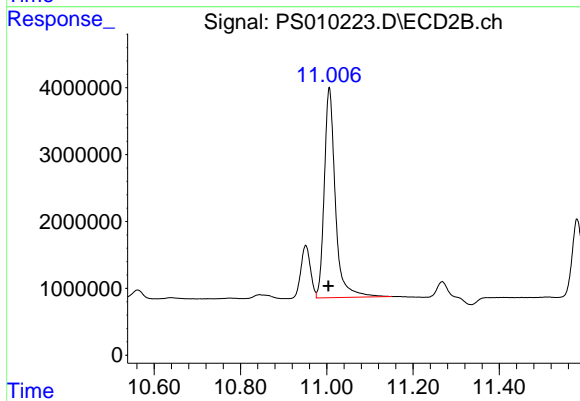
#14 DINOSEB

R.T.: 10.024 min  
 Delta R.T.: 0.000 min  
 Response: 4377633  
 Conc: 2.05 ng/ml



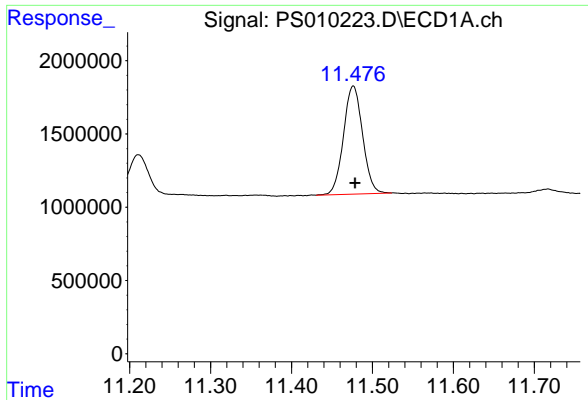
#15 Picloram

R.T.: 11.030 min  
 Delta R.T.: 0.001 min  
 Response: 47391715  
 Conc: 10.34 ng/ml



#15 Picloram

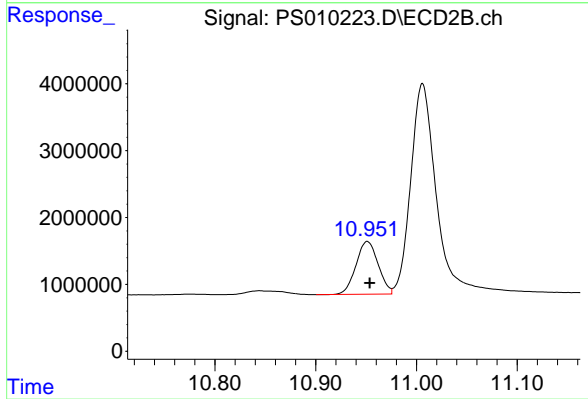
R.T.: 11.006 min  
 Delta R.T.: 0.002 min  
 Response: 55894065  
 Conc: 13.24 ng/ml



#16 DCPA

R.T.: 11.476 min  
Delta R.T.: -0.002 min  
Response: 12068600  
Conc: 2.67 ng/ml

Instrument :  
ECD\_S  
ClientSampleId :



#16 DCPA

R.T.: 10.951 min  
Delta R.T.: -0.002 min  
Response: 12048048  
Conc: 3.37 ng/ml