

Data Path : Z:\pestpcbsrv\HPCHEM1\ECD_S\Data\PS051220\
 Data File : PS010241.D
 Signal(s) : Signal #1: ECD1A.ch Signal #2: ECD2B.ch
 Acq On : 12 May 2020 17:31
 Operator : DD\AJ
 Sample : I.BLK
 Misc :
 ALS Vial : 2 Sample Multiplier: 1

Instrument :
 ECD_S
 ClientSampleId :

Integration File signal 1: autoint1.e
 Integration File signal 2: autoint2.e
 Quant Time: May 13 00:01:09 2020
 Quant Method : Z:\pestpcbsrv\HPCHEM1\ECD_S\Method\PS051120.M
 Quant Title : 8080.M
 QLast Update : Mon May 11 17:06:53 2020
 Response via : Initial Calibration
 Integrator: ChemStation

Volume Inj. : 2 µl
 Signal #1 Phase : Rtx-CLPesticides Signal #2 Phase: Rtx-CLPesticides2
 Signal #1 Info : 30M x 0.32mm x0.5 Signal #2 Info : 30M x 0.32mm x 0.25µm

	Compound	RT#1	RT#2	Resp#1	Resp#2	ng/ml	ng/ml

System Monitoring Compounds							
4) S	2,4-DCAA	7.234	6.921	312.5E6	270.0E6	444.450	503.451
Target Compounds							
2) T	3,5-DICHL...	6.486	6.100	55023561	366691	57.034	<MDL #
5) T	DICAMBA	0.000	7.090	0	879298	N.D.	<MDL
6) T	MCP	0.000	7.155	0	30455594	N.D.	16.591
8) T	DICHLORPROP	0.000	7.742	0	3774520	N.D.	6.686
9) T	2,4-D	8.418	7.942	48364039	1201542	68.460	1.733 #
10) T	Pentachlo...	0.000	8.444	0	351427	N.D.	<MDL
11) T	2,4,5-TP ...	0.000	8.801	0	882216	N.D.	<MDL
12) T	2,4,5-T	0.000	9.183	0	363222	N.D.	<MDL
13) T	2,4-DB	0.000	9.709	0	780300	N.D.	1.958
14) T	DINOSEB	0.000	10.021	0	333050	N.D.	<MDL
15) T	Picloram	10.994	11.005	17063076	1378323	3.722	<MDL #
16) T	DCPA	0.000	10.957	0	367200	N.D.	<MDL

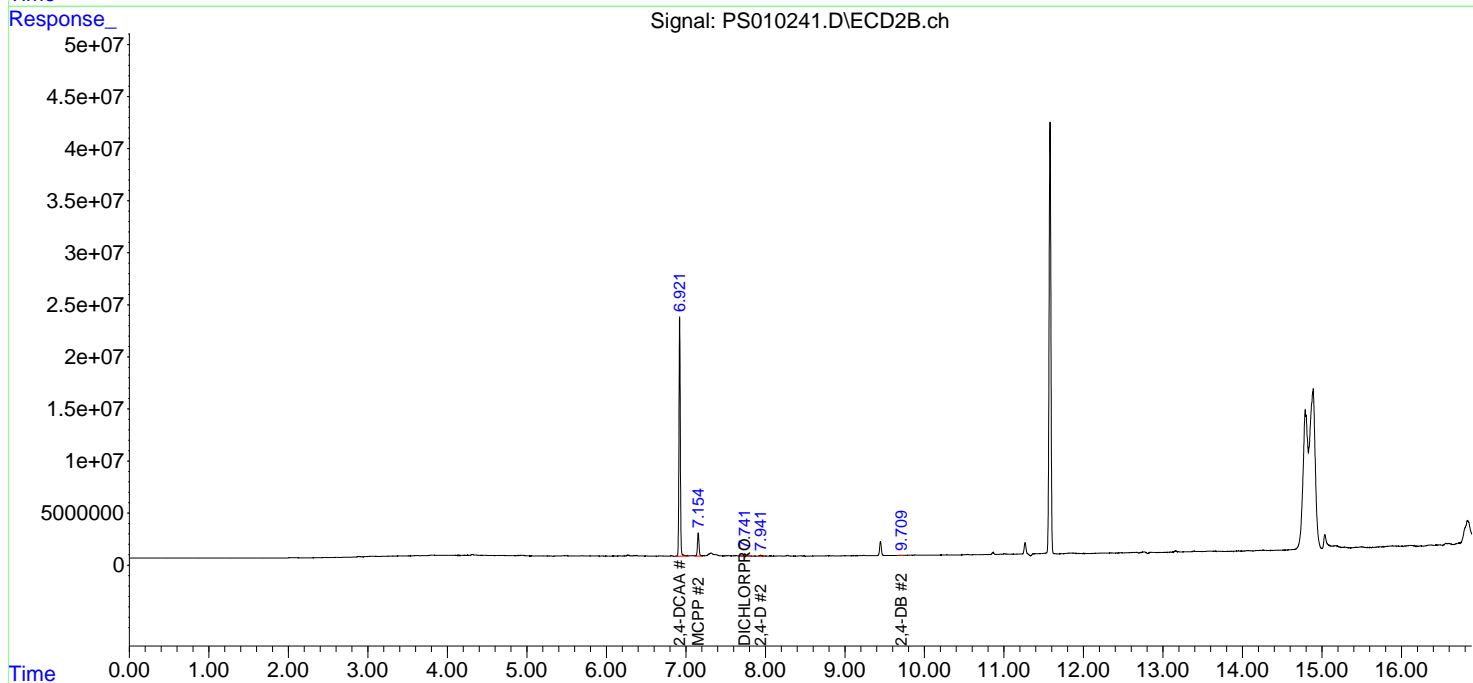
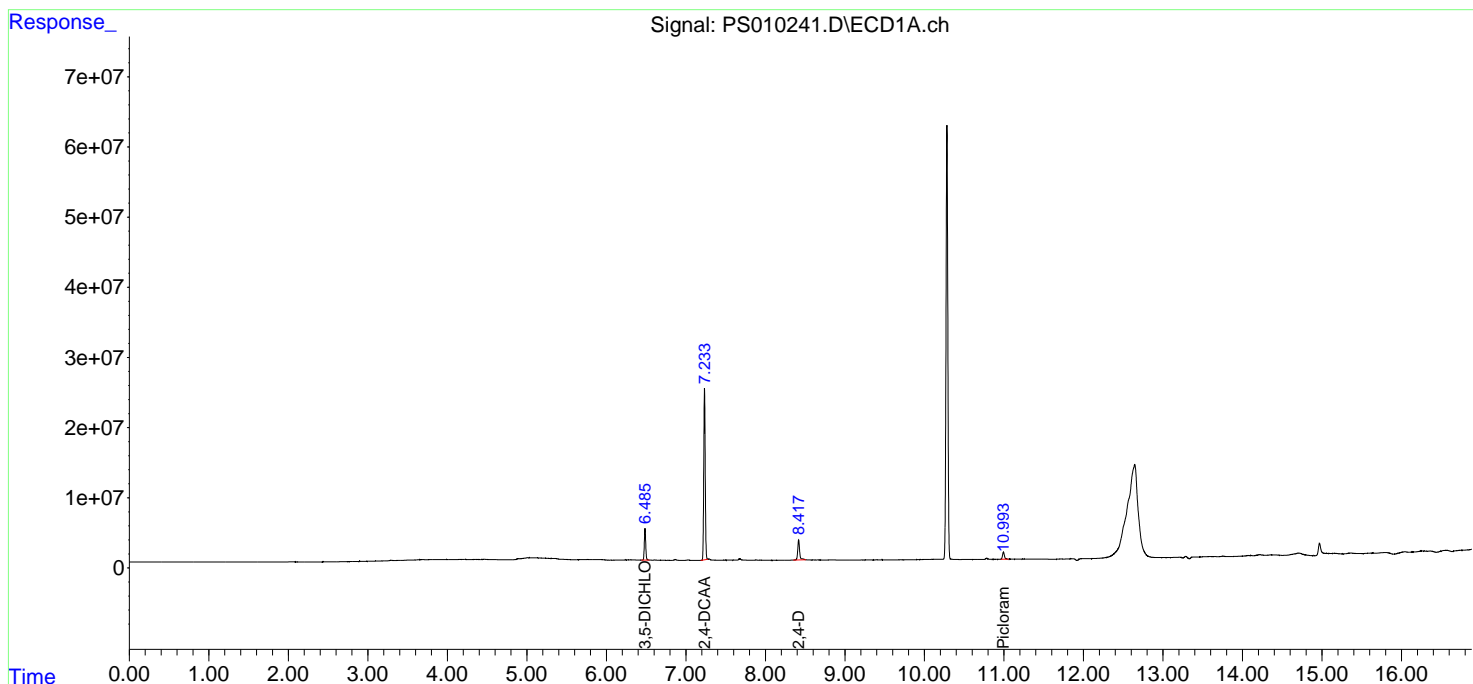
(f)=RT Delta > 1/2 Window (#)=Amounts differ by > 25% (m)=manual int.

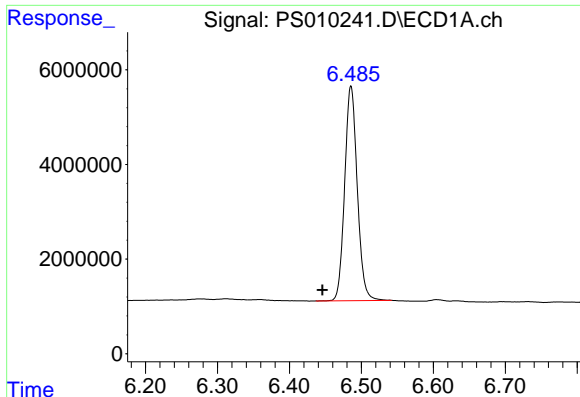
Data Path : Z:\pestpcbsrv\HPCHEM1\ECD_S\Data\PS051220\
 Data File : PS010241.D
 Signal(s) : Signal #1: ECD1A.ch Signal #2: ECD2B.ch
 Acq On : 12 May 2020 17:31
 Operator : DD\AJ
 Sample : I.BLK
 Misc :
 ALS Vial : 2 Sample Multiplier: 1

Instrument :
 ECD_S
 ClientSampleId :

Integration File signal 1: autoint1.e
 Integration File signal 2: autoint2.e
 Quant Time: May 13 00:01:09 2020
 Quant Method : Z:\pestpcbsrv\HPCHEM1\ECD_S\Method\PS051120.M
 Quant Title : 8080.M
 QLast Update : Mon May 11 17:06:53 2020
 Response via : Initial Calibration
 Integrator: ChemStation

Volume Inj. : 2 µl
 Signal #1 Phase : Rtx-CLPesticides Signal #2 Phase: Rtx-CLPesticides2
 Signal #1 Info : 30M x 0.32mm x 0.5 Signal #2 Info : 30M x 0.32mm x 0.25µm

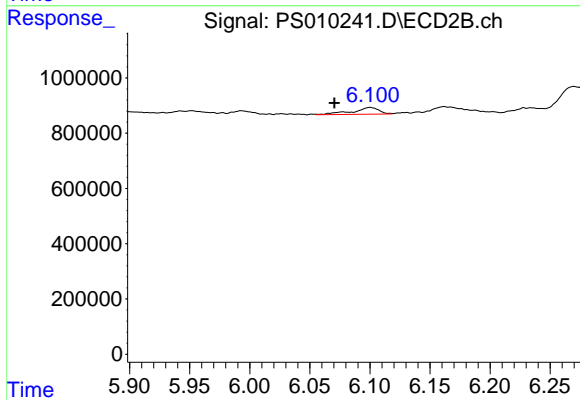




#2 3,5-DICHLOROBENZOIC ACID

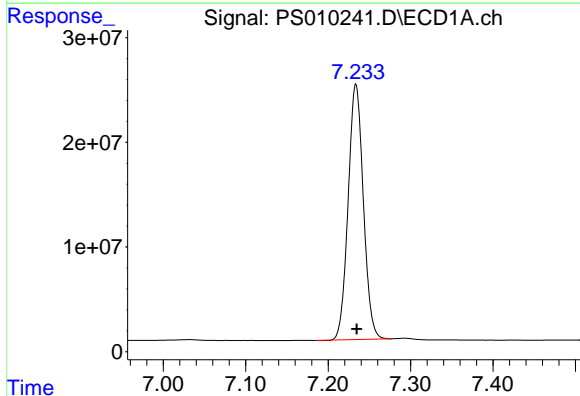
R.T.: 6.486 min
 Delta R.T.: 0.039 min
 Response: 55023561
 Conc: 57.03 ng/ml

Instrument :
 ECD_S
 ClientSampleId :



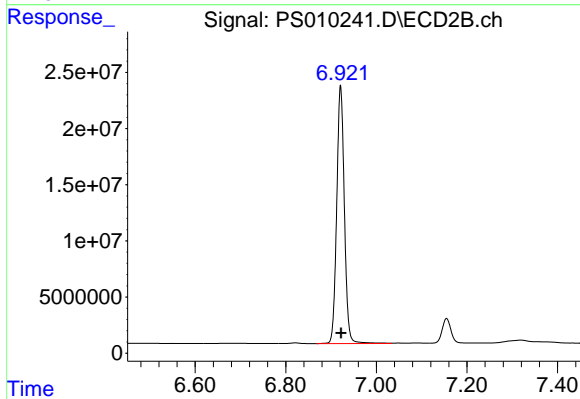
#2 3,5-DICHLOROBENZOIC ACID

R.T.: 6.100 min
 Delta R.T.: 0.030 min
 Response: 366691
 Conc: N.D.



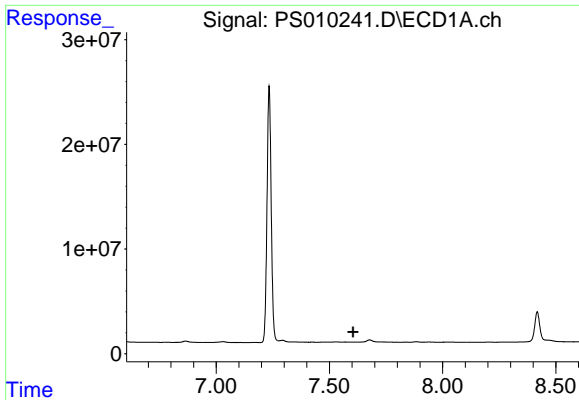
#4 2,4-DCAA

R.T.: 7.234 min
 Delta R.T.: -0.001 min
 Response: 312490607
 Conc: 444.45 ng/ml



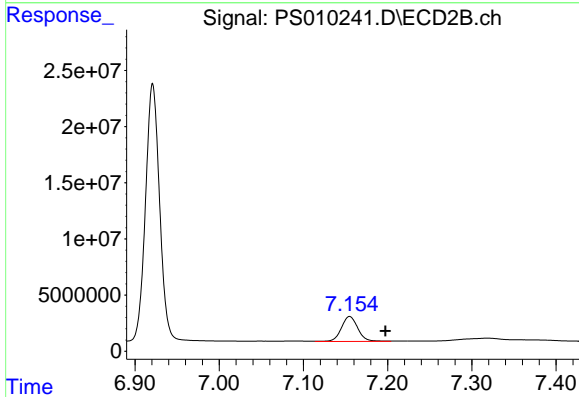
#4 2,4-DCAA

R.T.: 6.921 min
 Delta R.T.: 0.000 min
 Response: 269996077
 Conc: 503.45 ng/ml

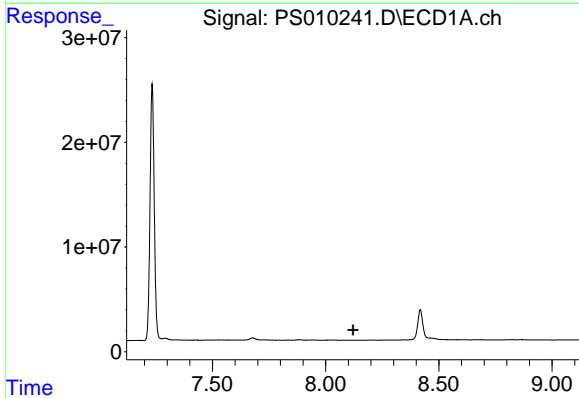


#6 MCPP
 R.T.: 0.000 min
 Exp R.T.: 7.604 min
 Response: 0
 Conc: N.D.

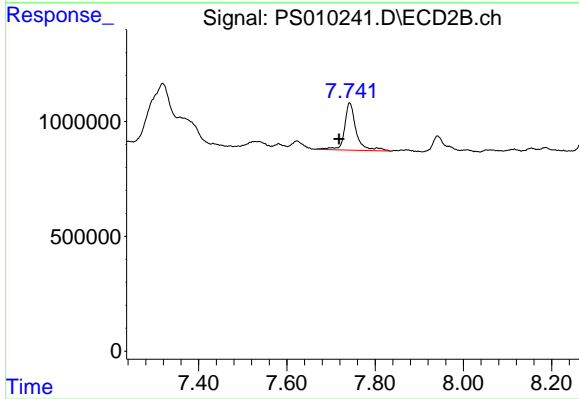
Instrument :
 ECD_S
 ClientSampleId :



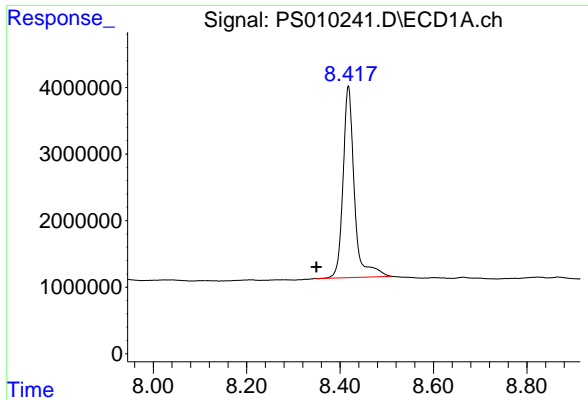
#6 MCPP
 R.T.: 7.155 min
 Delta R.T.: -0.042 min
 Response: 30455594
 Conc: 16.59 ug/ml



#8 DICHLORPROP
 R.T.: 0.000 min
 Exp R.T.: 8.121 min
 Response: 0
 Conc: N.D.

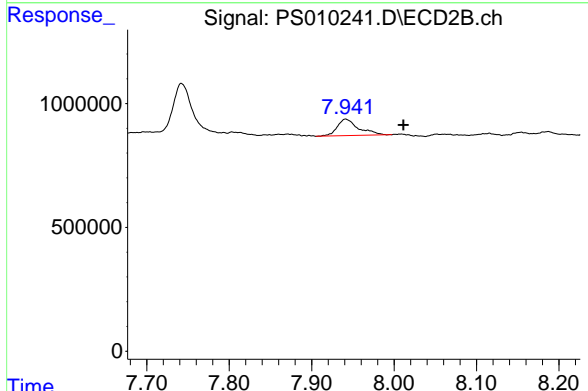


#8 DICHLORPROP
 R.T.: 7.742 min
 Delta R.T.: 0.024 min
 Response: 3774520
 Conc: 6.69 ng/ml

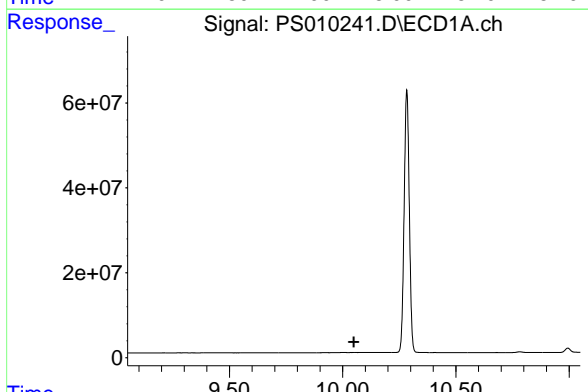


#9 2,4-D
 R.T.: 8.418 min
 Delta R.T.: 0.069 min
 Response: 48364039
 Conc: 68.46 ng/ml

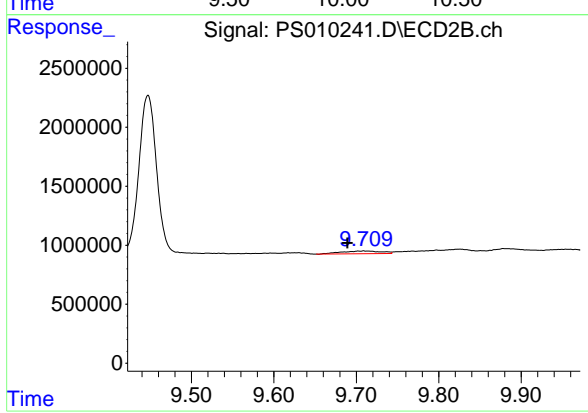
Instrument :
 ECD_S
 ClientSampleId :



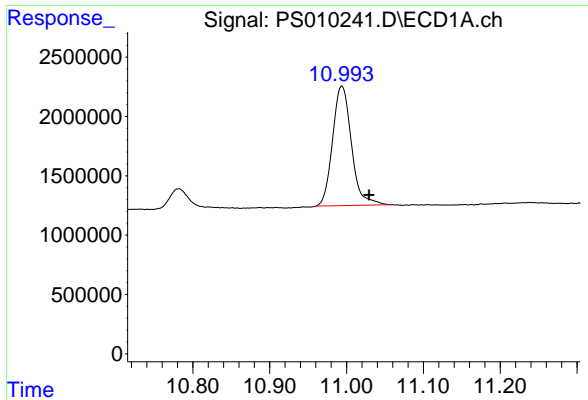
#9 2,4-D
 R.T.: 7.942 min
 Delta R.T.: -0.070 min
 Response: 1201542
 Conc: 1.73 ng/ml



#13 2,4-DB
 R.T.: 0.000 min
 Exp R.T. : 10.050 min
 Response: 0
 Conc: N.D.



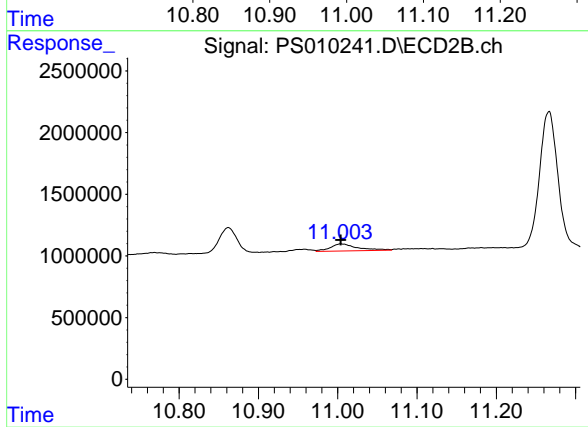
#13 2,4-DB
 R.T.: 9.709 min
 Delta R.T.: 0.020 min
 Response: 780300
 Conc: 1.96 ng/ml



#15 Picloram

R.T.: 10.994 min
Delta R.T.: -0.035 min
Response: 17063076
Conc: 3.72 ng/ml

Instrument :
ECD_S
ClientSampled :



#15 Picloram

R.T.: 11.005 min
Delta R.T.: 0.001 min
Response: 1378323
Conc: N.D.