

Data Path : Z:\pestpcbsrv\HPCHEM1\ECD\_S\Data\PS051223\  
 Data File : PS023024.D  
 Signal(s) : Signal #1: ECD1A.ch Signal #2: ECD2B.ch  
 Acq On : 12 May 2023 22:54  
 Operator : AR\AJ  
 Sample : 02747-02  
 Misc :  
 ALS Vial : 19 Sample Multiplier: 1

Instrument :  
 ECD\_S  
 ClientSampleId :

Integration File signal 1: autoint1.e  
 Integration File signal 2: autoint2.e  
 Quant Time: May 13 06:48:54 2023  
 Quant Method : Z:\pestpcbsrv\HPCHEM1\ECD\_S\Method\PS051023.M  
 Quant Title : 8080.M  
 QLast Update : Wed May 10 16:09:19 2023  
 Response via : Initial Calibration  
 Integrator: ChemStation

Volume Inj. : 2 µl  
 Signal #1 Phase : Rtx-CLPesticides Signal #2 Phase: Rtx-CLPesticides2  
 Signal #1 Info : 30M x 0.32mm x0.5 Signal #2 Info : 30M x 0.32mm x 0.25µm

	Compound	RT#1	RT#2	Resp#1	Resp#2	ng/ml	ng/ml
-----							
System Monitoring Compounds							
4) S	2,4-DCAA	6.482	6.857	616.3E6	156.5E6	405.201	278.894 #
Target Compounds							
1) T	Dalapon	2.518	0.000	66217995	0	40.953	N.D. #
2) T	3,5-DICHL...	5.829	6.037	-112538	1111688	N.D.	1.311
3) T	4-Nitroph...	6.335	6.489	28834259	6144703	27.389	18.517 #
6) T	MCPD	6.812	7.101	41395588	4322922	8.859	2.443 #
7) T	MCPA	6.953	7.327	40408347	19899613	5.772	7.515 #
8) T	DICHLORPROP	7.263	7.662	67896012	15027443	36.228	24.282 #
9) T	2,4-D	7.404	7.937	71598843	4370902	30.938	6.110 #
11) T	2,4,5-TP ...	8.211	8.718	9309422	3600929	<MDL	1.011 #
12) T	2,4,5-T	8.460	9.088	2155570	10430991	<MDL	3.249 #
13) T	2,4-DB	9.009	9.605	201.3E6	2896765	85.821	7.544 #
15) T	Picloram	9.887	10.898	25698807	12246966	1.499	2.876 #
16) T	DCCA	10.330	10.846	32525639	11289963	2.493	3.021

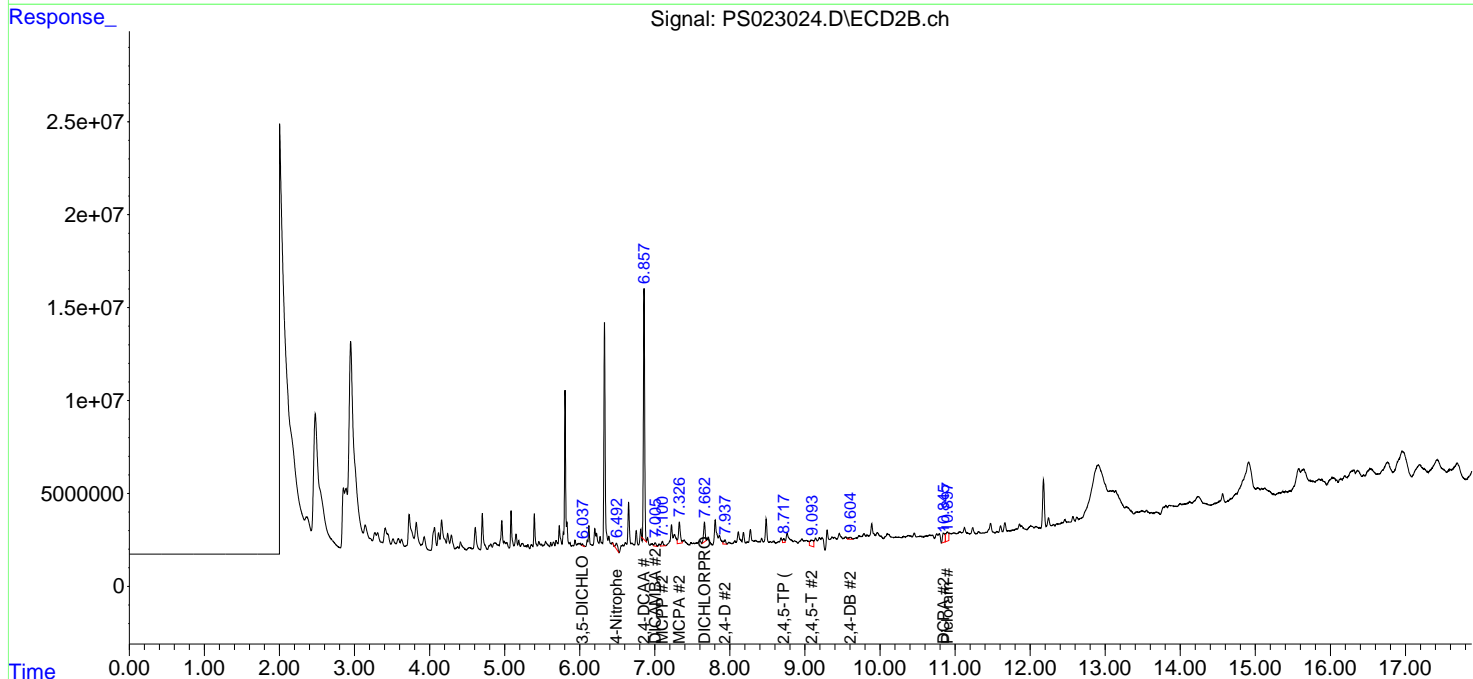
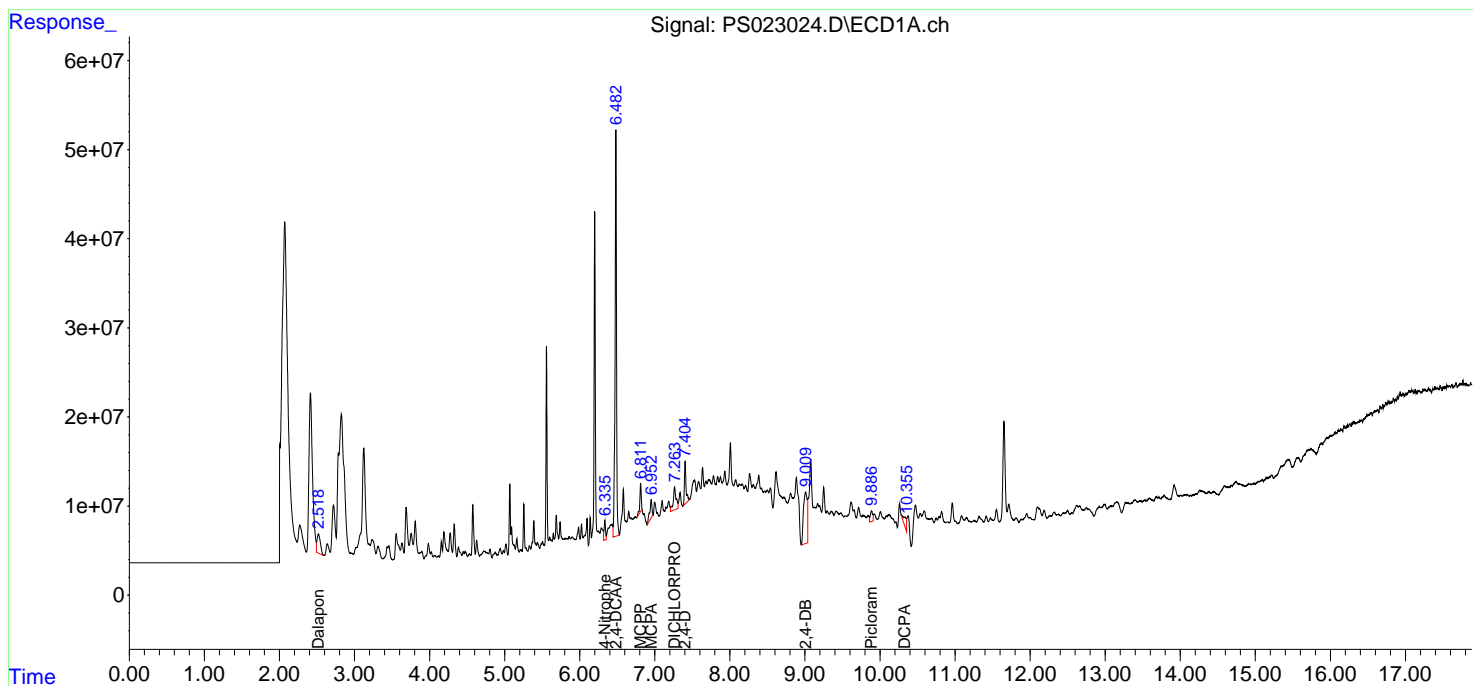
(f)=RT Delta > 1/2 Window (#)=Amounts differ by > 25% (m)=manual int.

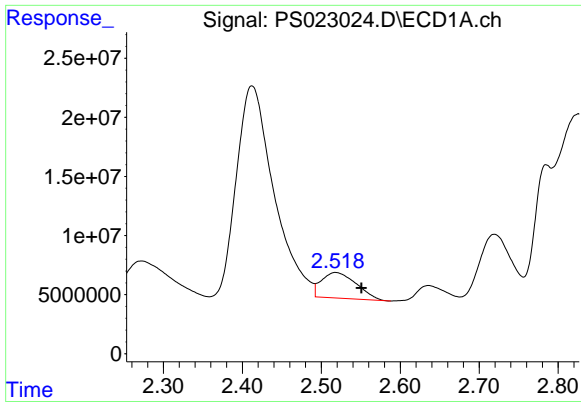
Data Path : Z:\pestpcbsrv\HPCHEM1\ECD\_S\Data\PS051223\  
 Data File : PS023024.D  
 Signal(s) : Signal #1: ECD1A.ch Signal #2: ECD2B.ch  
 Acq On : 12 May 2023 22:54  
 Operator : AR\AJ  
 Sample : 02747-02  
 Misc :  
 ALS Vial : 19 Sample Multiplier: 1

Instrument :  
 ECD\_S  
 ClientSampleId :

Integration File signal 1: autoint1.e  
 Integration File signal 2: autoint2.e  
 Quant Time: May 13 06:48:54 2023  
 Quant Method : Z:\pestpcbsrv\HPCHEM1\ECD\_S\Method\PS051023.M  
 Quant Title : 8080.M  
 QLast Update : Wed May 10 16:09:19 2023  
 Response via : Initial Calibration  
 Integrator: ChemStation

Volume Inj. : 2 µl  
 Signal #1 Phase : Rtx-CLPesticides Signal #2 Phase: Rtx-CLPesticides2  
 Signal #1 Info : 30M x 0.32mm x0.5 Signal #2 Info : 30M x 0.32mm x 0.25µm

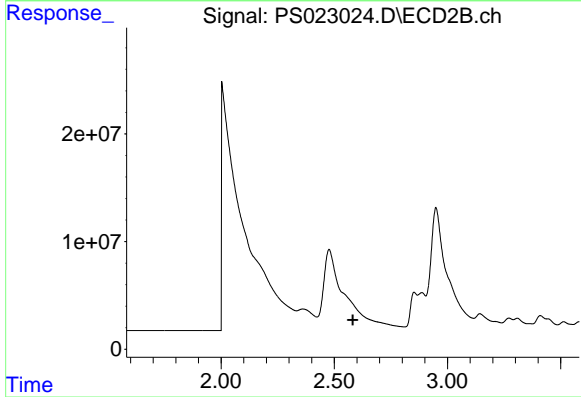




#1 Dalapon

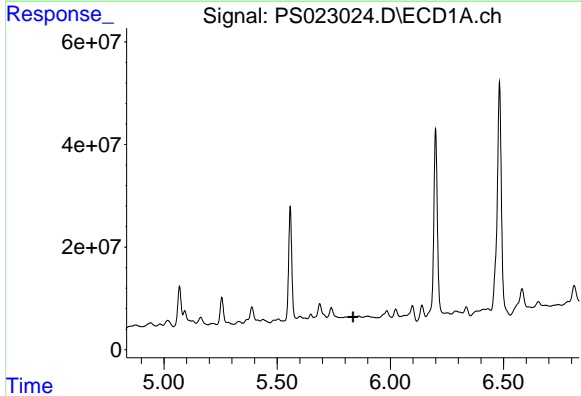
R.T.: 2.518 min  
 Delta R.T.: -0.033 min  
 Response: 66217995  
 Conc: 40.95 ng/ml

Instrument :  
 ECD\_S  
 ClientSampleId :



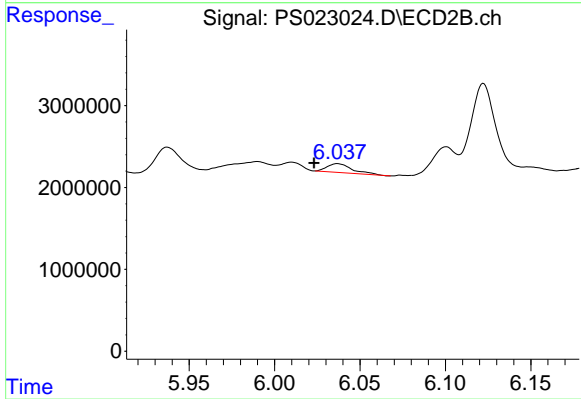
#1 Dalapon

R.T.: 0.000 min  
 Exp R.T. : 2.582 min  
 Response: 0  
 Conc: N.D.



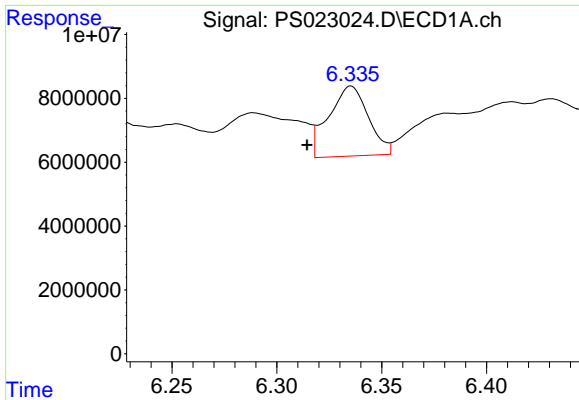
#2 3,5-DICHLOROBENZOIC ACID

R.T.: 5.829 min  
 Delta R.T.: -0.006 min  
 Response: -112538  
 Conc: N.D.



#2 3,5-DICHLOROBENZOIC ACID

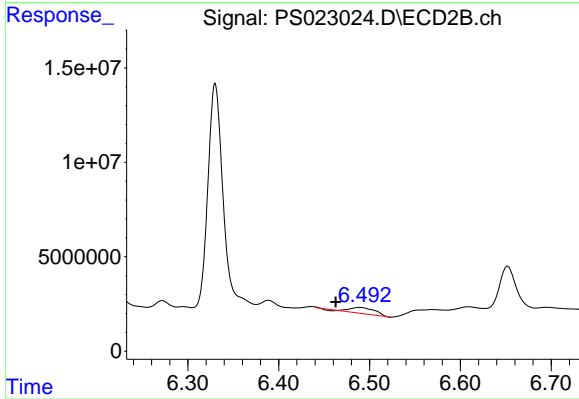
R.T.: 6.037 min  
 Delta R.T.: 0.014 min  
 Response: 1111688  
 Conc: 1.31 ng/ml



#3 4-Nitrophenol

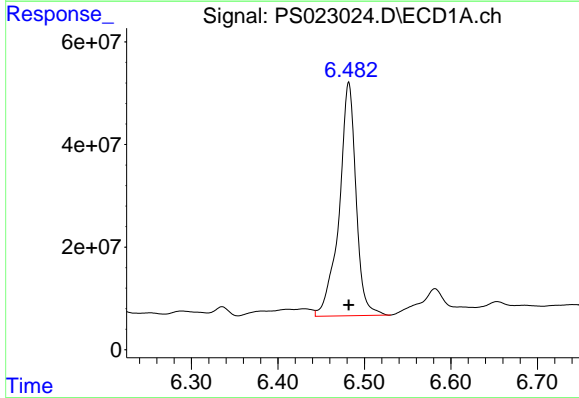
R.T.: 6.335 min  
 Delta R.T.: 0.021 min  
 Response: 28834259  
 Conc: 27.39 ng/ml

Instrument :  
 ECD\_S  
 ClientSampleId :



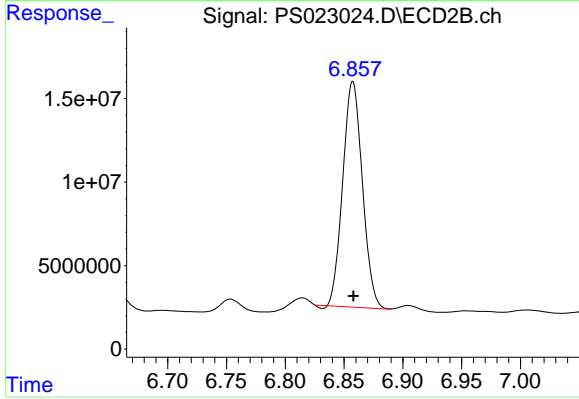
#3 4-Nitrophenol

R.T.: 6.489 min  
 Delta R.T.: 0.026 min  
 Response: 6144703  
 Conc: 18.52 ng/ml



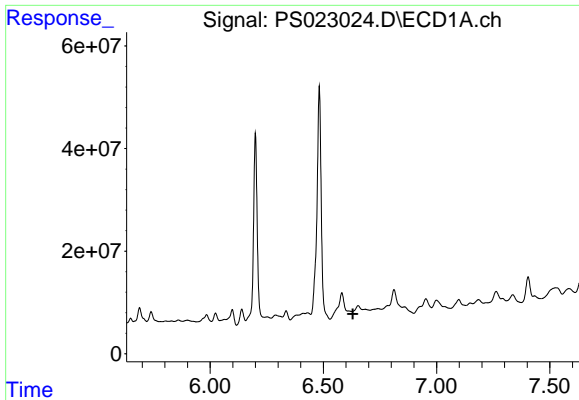
#4 2,4-DCAA

R.T.: 6.482 min  
 Delta R.T.: 0.000 min  
 Response: 616308779  
 Conc: 405.20 ng/ml



#4 2,4-DCAA

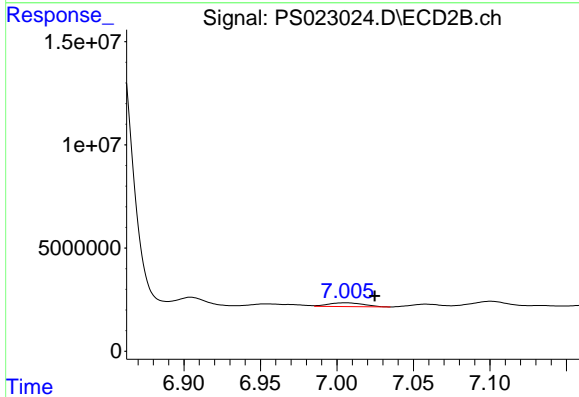
R.T.: 6.857 min  
 Delta R.T.: 0.000 min  
 Response: 156491979  
 Conc: 278.89 ng/ml



#5 DICAMBA

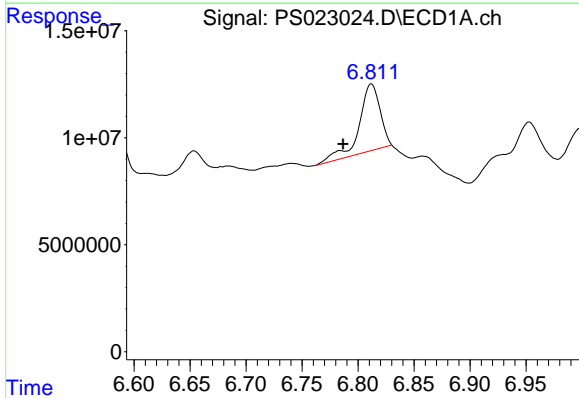
R.T.: 6.654 min  
 Delta R.T.: 0.023 min  
 Response: -14380925  
 Conc: N.D.

Instrument :  
 ECD\_S  
 ClientSampleId :



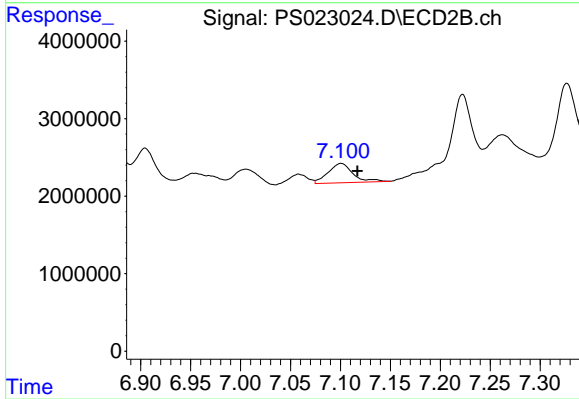
#5 DICAMBA

R.T.: 7.006 min  
 Delta R.T.: -0.019 min  
 Response: 2944293  
 Conc: 1.18 ng/ml



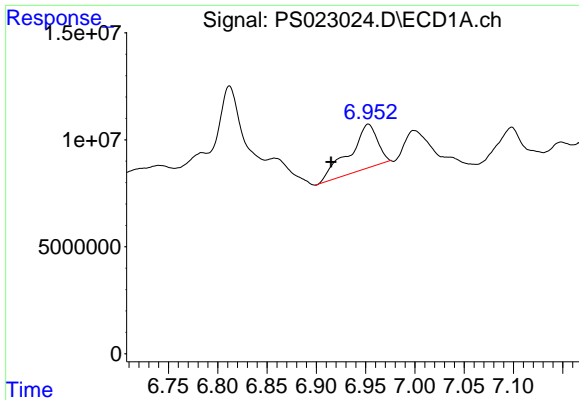
#6 MCPP

R.T.: 6.812 min  
 Delta R.T.: 0.025 min  
 Response: 41395588  
 Conc: 8.86 ug/ml



#6 MCPP

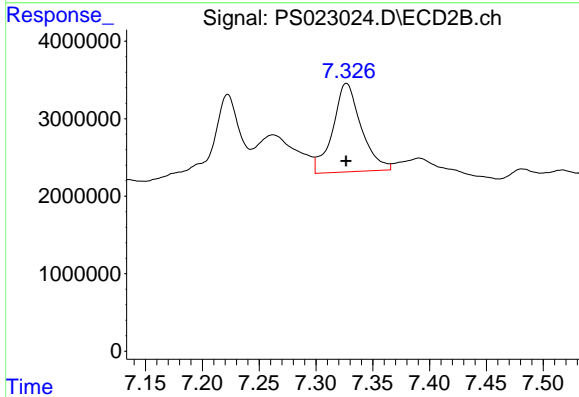
R.T.: 7.101 min  
 Delta R.T.: -0.016 min  
 Response: 4322922  
 Conc: 2.44 ug/ml



#7 MCPA

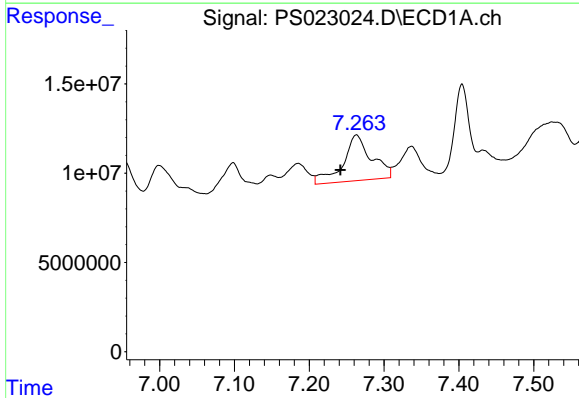
R.T.: 6.953 min  
 Delta R.T.: 0.038 min  
 Response: 40408347  
 Conc: 5.77 ug/ml

Instrument :  
 ECD\_S  
 ClientSampleId :



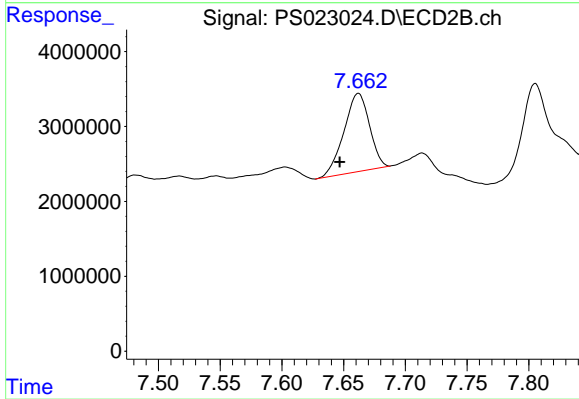
#7 MCPA

R.T.: 7.327 min  
 Delta R.T.: 0.000 min  
 Response: 19899613  
 Conc: 7.52 ug/ml



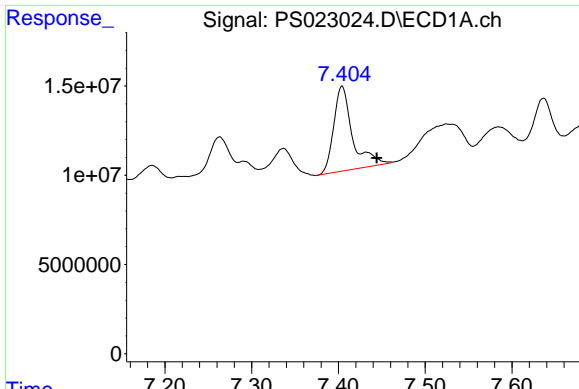
#8 DICHLORPROP

R.T.: 7.263 min  
 Delta R.T.: 0.021 min  
 Response: 67896012  
 Conc: 36.23 ng/ml



#8 DICHLORPROP

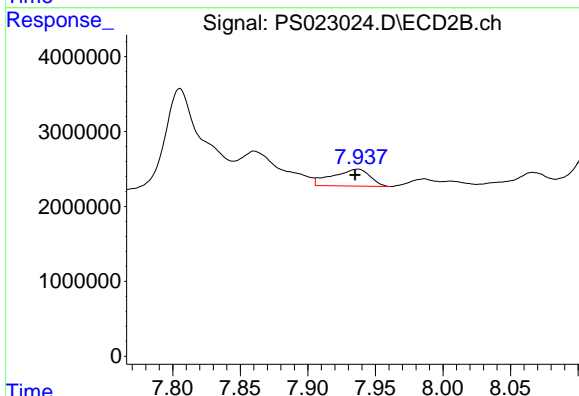
R.T.: 7.662 min  
 Delta R.T.: 0.015 min  
 Response: 15027443  
 Conc: 24.28 ng/ml



#9 2,4-D

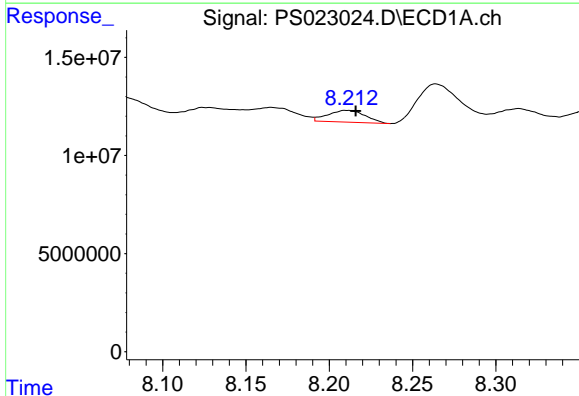
R.T.: 7.404 min  
 Delta R.T.: -0.040 min  
 Response: 71598843  
 Conc: 30.94 ng/ml

Instrument :  
 ECD\_S  
 ClientSampleId :



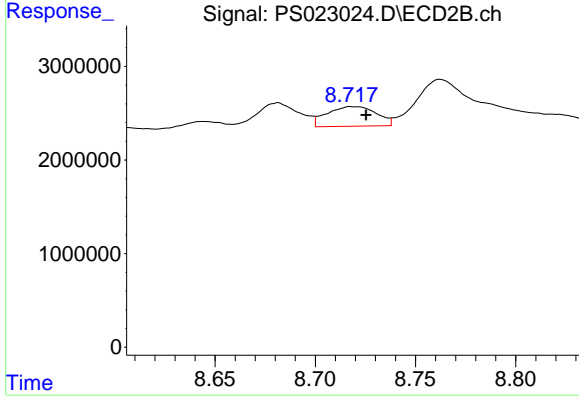
#9 2,4-D

R.T.: 7.937 min  
 Delta R.T.: 0.002 min  
 Response: 4370902  
 Conc: 6.11 ng/ml



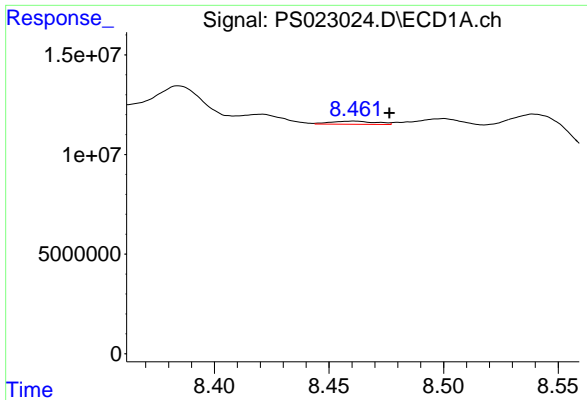
#11 2,4,5-TP (SILVEX)

R.T.: 8.211 min  
 Delta R.T.: -0.005 min  
 Response: 9309422  
 Conc: N.D.



#11 2,4,5-TP (SILVEX)

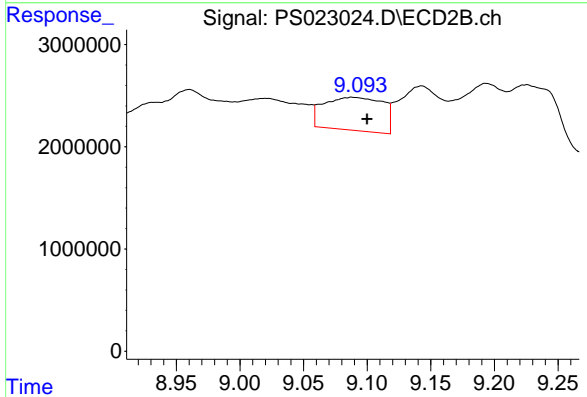
R.T.: 8.718 min  
 Delta R.T.: -0.007 min  
 Response: 3600929  
 Conc: 1.01 ng/ml



#12 2,4,5-T

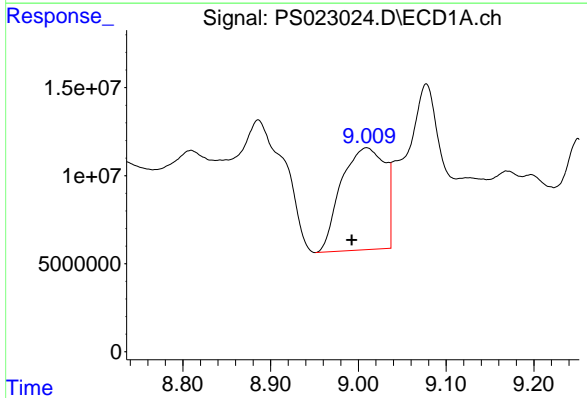
R.T.: 8.460 min  
 Delta R.T.: -0.016 min  
 Response: 2155570  
 Conc: N.D.

Instrument :  
 ECD\_S  
 ClientSampleId :



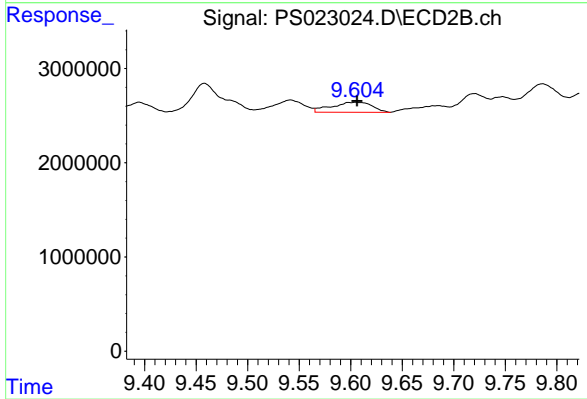
#12 2,4,5-T

R.T.: 9.088 min  
 Delta R.T.: -0.012 min  
 Response: 10430991  
 Conc: 3.25 ng/ml



#13 2,4-DB

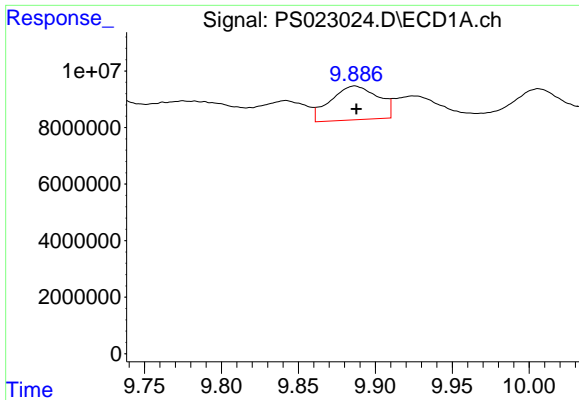
R.T.: 9.009 min  
 Delta R.T.: 0.017 min  
 Response: 201338252  
 Conc: 85.82 ng/ml



#13 2,4-DB

R.T.: 9.605 min  
 Delta R.T.: -0.001 min  
 Response: 2896765  
 Conc: 7.54 ng/ml

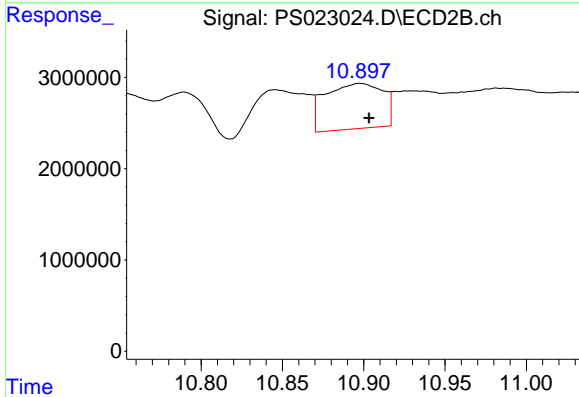




#15 Picloram

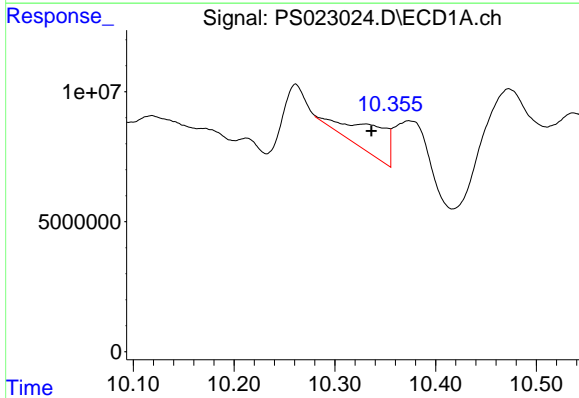
R.T.: 9.887 min  
 Delta R.T.: -0.001 min  
 Response: 25698807  
 Conc: 1.50 ng/ml

Instrument :  
 ECD\_S  
 ClientSampleId :



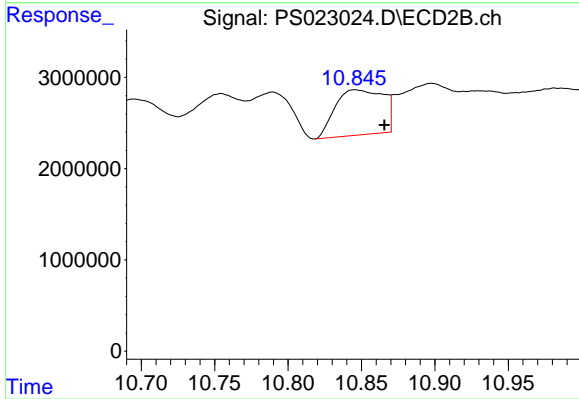
#15 Picloram

R.T.: 10.898 min  
 Delta R.T.: -0.006 min  
 Response: 12246966  
 Conc: 2.88 ng/ml



#16 DCPA

R.T.: 10.330 min  
 Delta R.T.: -0.007 min  
 Response: 32525639  
 Conc: 2.49 ng/ml



#16 DCPA

R.T.: 10.846 min  
 Delta R.T.: -0.020 min  
 Response: 11289963  
 Conc: 3.02 ng/ml