

Data Path : Z:\pestpcbsrv\HPCHEM1\ECD_S\Data\PS051320\
 Data File : PS010250.D
 Signal(s) : Signal #1: ECD1A.ch Signal #2: ECD2B.ch
 Acq On : 13 May 2020 12:10
 Operator : DD\AJ
 Sample : PB128805BL
 Misc :
 ALS Vial : 4 Sample Multiplier: 1

Instrument :
 ECD_S
 ClientSampleId :
 PB128805BL

Integration File signal 1: autoint1.e
 Integration File signal 2: autoint2.e
 Quant Time: May 13 14:15:59 2020
 Quant Method : Z:\pestpcbsrv\HPCHEM1\ECD_S\Method\PS051120.M
 Quant Title : 8080.M
 QLast Update : Mon May 11 17:06:53 2020
 Response via : Initial Calibration
 Integrator: ChemStation

Volume Inj. : 2 µl
 Signal #1 Phase : Rtx-CLPesticides Signal #2 Phase: Rtx-CLPesticides2
 Signal #1 Info : 30M x 0.32mm x0.5 Signal #2 Info : 30M x 0.32mm x 0.25µm

	Compound	RT#1	RT#2	Resp#1	Resp#2	ng/ml	ng/ml

System Monitoring Compounds							
4) S	2,4-DCAA	7.237	6.918	309.7E6	261.1E6	440.535	486.840
Target Compounds							
1) T	Dalapon	3.002	2.576	39383514	262.1E6	44.181	323.525 #
2) T	3,5-DICHL...	0.000	6.097	0	75702528	N.D.	92.958
3) T	4-Nitroph...	7.012	6.525	7511131	6695335	22.705	20.151
5) T	DICAMBA	0.000	7.087	0	6630719	N.D.	3.028
6) T	MCPP	0.000	7.198	0	3516960	N.D.	1.916
7) T	MCPA	7.730	7.384	110.6E6	27864963	35.502	10.243 #
8) T	DICHLORPROP	0.000	7.737	0	8654699	N.D.	15.330
9) T	2,4-D	0.000	7.988	0	5725936	N.D.	8.258
10) T	Pentachlo...	8.664	8.438	5922891	7899025	<MDL	1.166 #
11) T	2,4,5-TP ...	0.000	8.768	0	92613075	N.D.	31.970
12) T	2,4,5-T	9.448	9.181	37590186	10889037	10.683	3.745 #
13) T	2,4-DB	0.000	9.684	0	2286575	N.D.	5.737
14) T	DINOSEB	11.181	10.024	25703452	19305277	9.381	9.059
15) T	Picloram	11.033	11.001	179.8E6	151.8E6	39.212	35.956
16) T	DCPA	11.486	10.950	2031108	10300219	<MDL	2.881 #

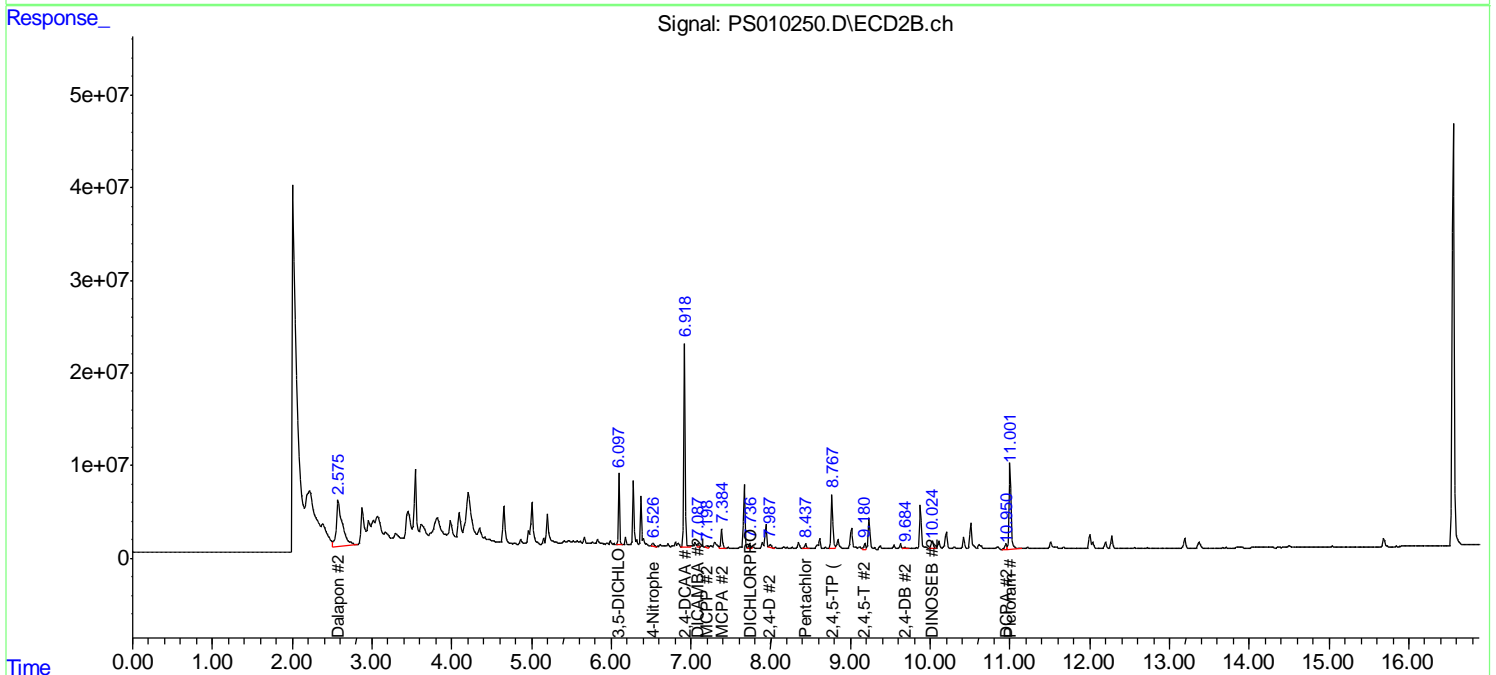
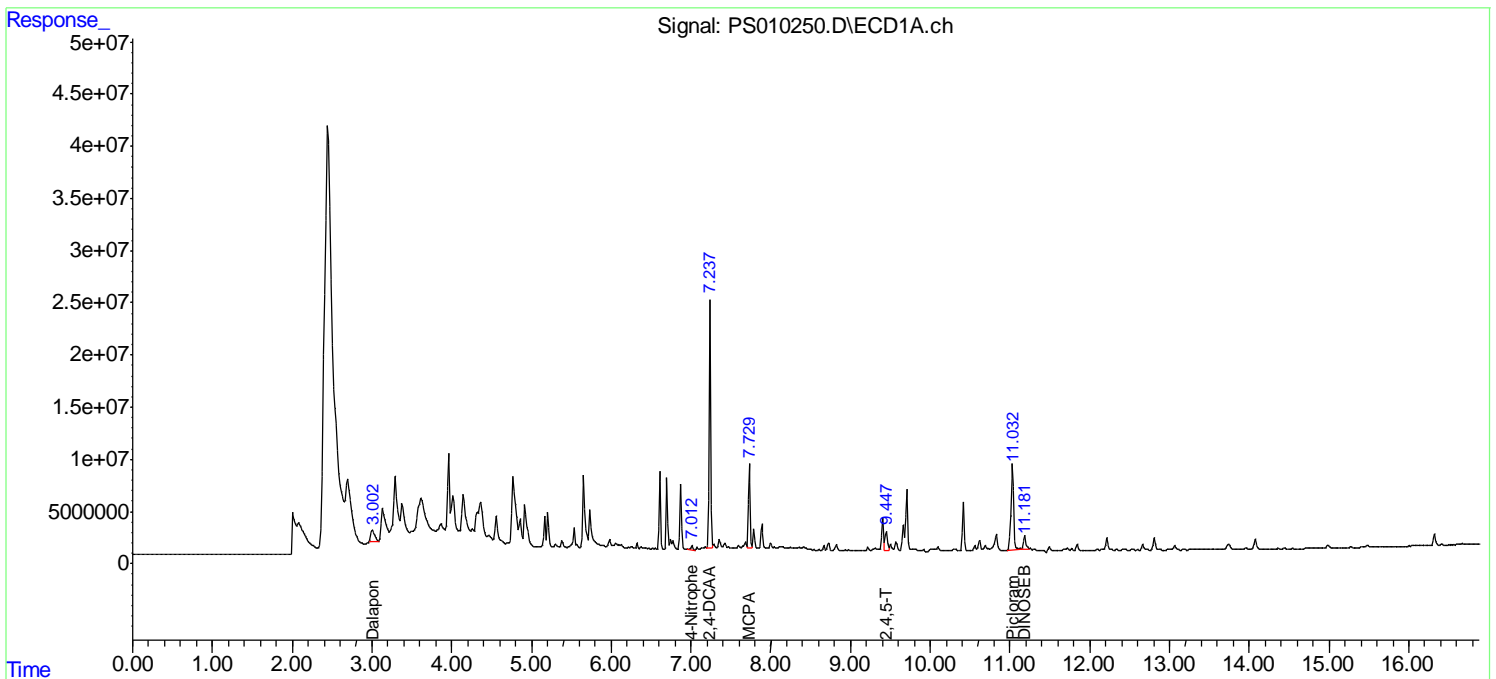
(f)=RT Delta > 1/2 Window (#)=Amounts differ by > 25% (m)=manual int.

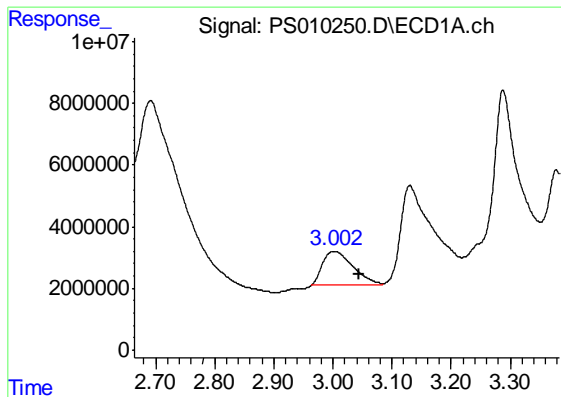
Data Path : Z:\pestpcbsrv\HPCHEM1\ECD_S\Data\PS051320\
 Data File : PS010250.D
 Signal(s) : Signal #1: ECD1A.ch Signal #2: ECD2B.ch
 Acq On : 13 May 2020 12:10
 Operator : DD\AJ
 Sample : PB128805BL
 Misc :
 ALS Vial : 4 Sample Multiplier: 1

Instrument :
 ECD_S
 ClientSampled :
 PB128805BL

Integration File signal 1: autoint1.e
 Integration File signal 2: autoint2.e
 Quant Time: May 13 14:15:59 2020
 Quant Method : Z:\pestpcbsrv\HPCHEM1\ECD_S\Method\PS051120.M
 Quant Title : 8080.M
 QLast Update : Mon May 11 17:06:53 2020
 Response via : Initial Calibration
 Integrator: ChemStation

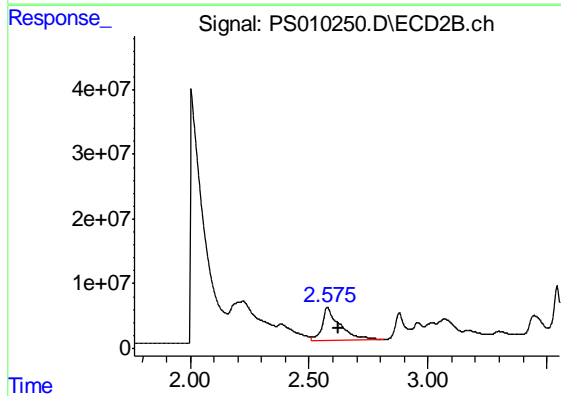
Volume Inj. : 2 µl
 Signal #1 Phase : Rtx-CLPesticides Signal #2 Phase: Rtx-CLPesticides2
 Signal #1 Info : 30M x 0.32mm x0.5 Signal #2 Info : 30M x 0.32mm x 0.25µm



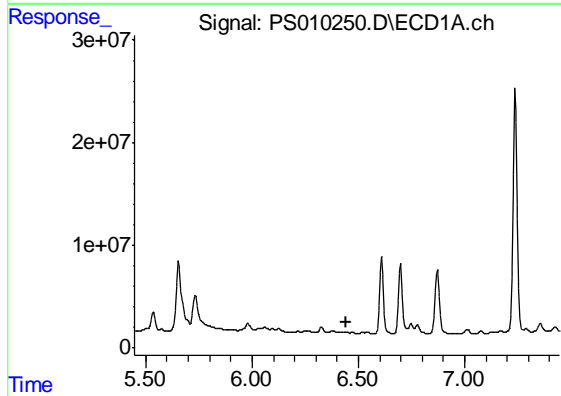


#1 Dalapon
 R.T.: 3.002 min
 Delta R.T.: -0.043 min
 Response: 39383514
 Conc: 44.18 ng/ml

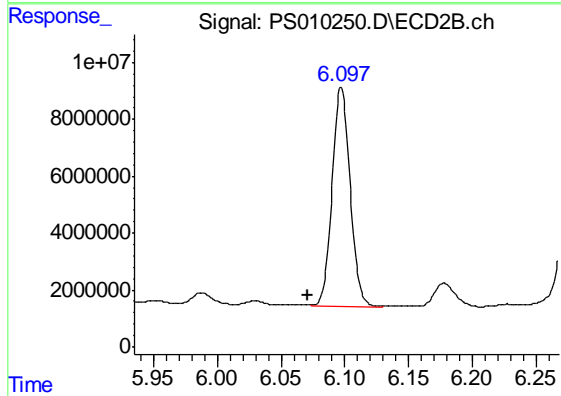
Instrument :
 ECD_S
 ClientSampleId :
 PB128805BL



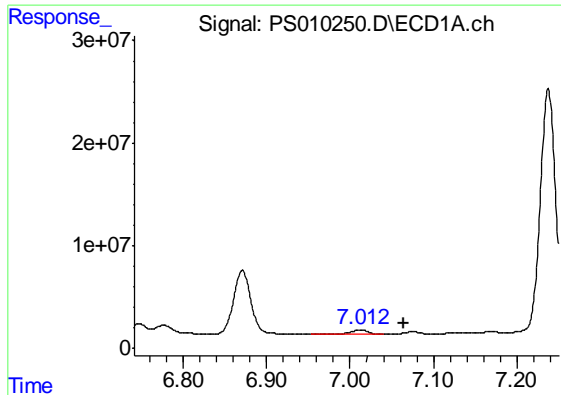
#1 Dalapon
 R.T.: 2.576 min
 Delta R.T.: -0.050 min
 Response: 262103033
 Conc: 323.53 ng/ml



#2 3,5-DICHLOROBENZOIC ACID
 R.T.: 0.000 min
 Exp R.T. : 6.446 min
 Response: 0
 Conc: N.D.

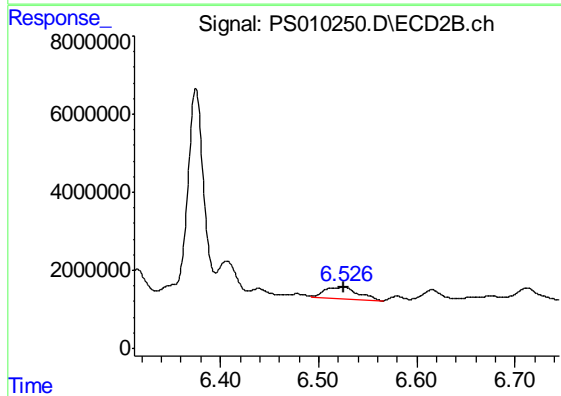


#2 3,5-DICHLOROBENZOIC ACID
 R.T.: 6.097 min
 Delta R.T.: 0.027 min
 Response: 75702528
 Conc: 92.96 ng/ml

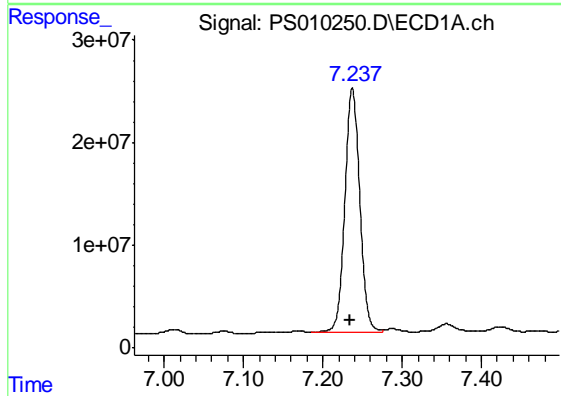


#3 4-Nitrophenol
 R.T.: 7.012 min
 Delta R.T.: -0.051 min
 Response: 7511131
 Conc: 22.70 ng/ml

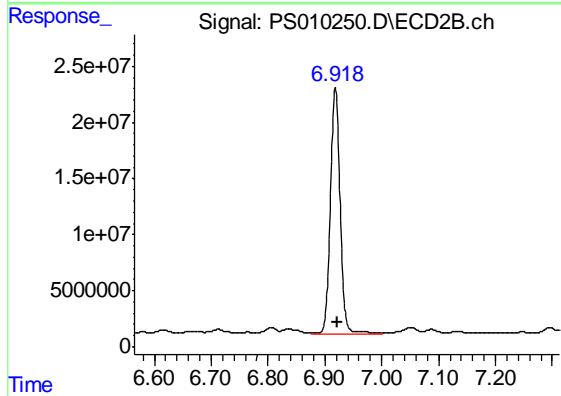
Instrument :
 ECD_S
 ClientSampleId :
 PB128805BL



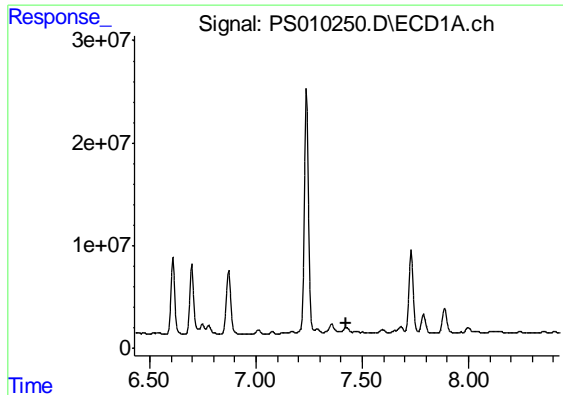
#3 4-Nitrophenol
 R.T.: 6.525 min
 Delta R.T.: 0.000 min
 Response: 6695335
 Conc: 20.15 ng/ml



#4 2,4-DCAA
 R.T.: 7.237 min
 Delta R.T.: 0.003 min
 Response: 309737907
 Conc: 440.54 ng/ml

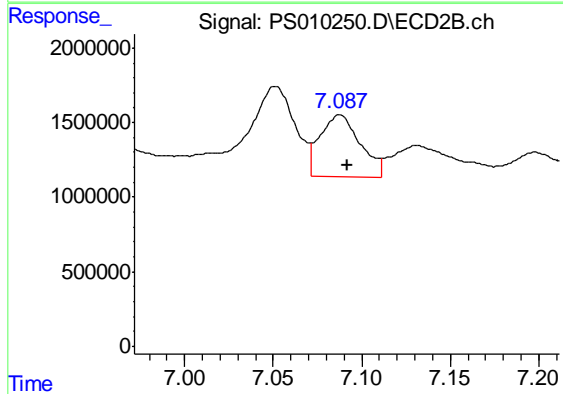


#4 2,4-DCAA
 R.T.: 6.918 min
 Delta R.T.: -0.003 min
 Response: 261088142
 Conc: 486.84 ng/ml

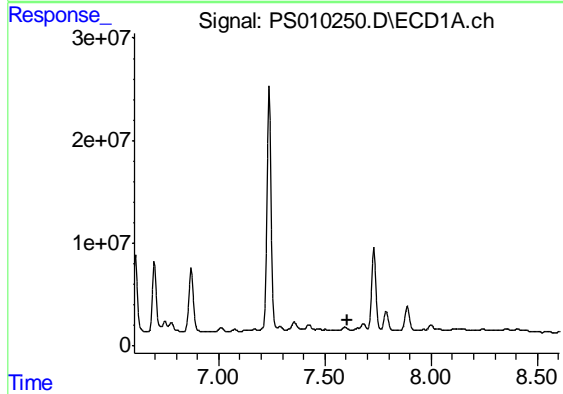


#5 DICAMBA
 R.T.: 0.000 min
 Exp R.T. : 7.428 min
 Response: 0
 Conc: N.D.

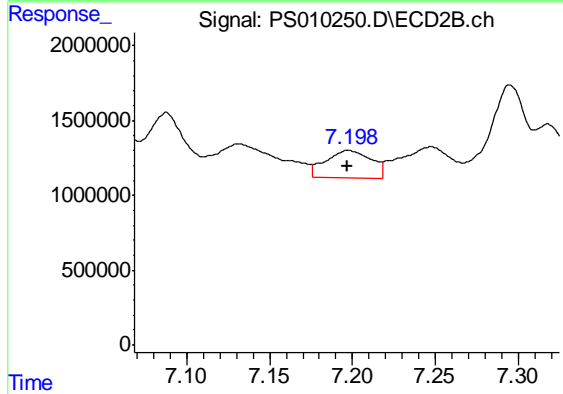
Instrument :
 ECD_S
 ClientSampleId :
 PB128805BL



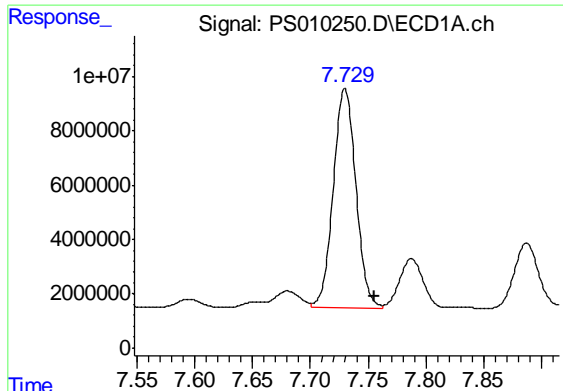
#5 DICAMBA
 R.T.: 7.087 min
 Delta R.T.: -0.005 min
 Response: 6630719
 Conc: 3.03 ng/ml



#6 MCPP
 R.T.: 0.000 min
 Exp R.T. : 7.604 min
 Response: 0
 Conc: N.D.



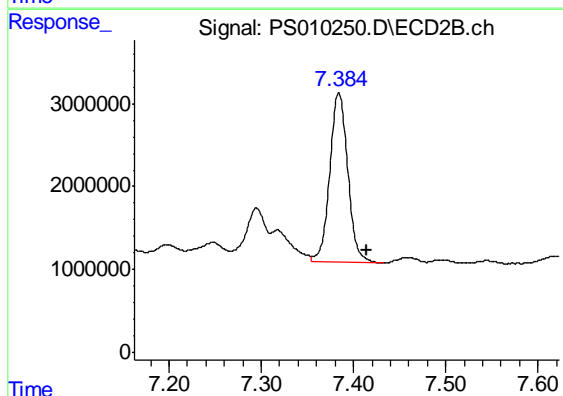
#6 MCPP
 R.T.: 7.198 min
 Delta R.T.: 0.000 min
 Response: 3516960
 Conc: 1.92 ug/ml



#7 MCPA

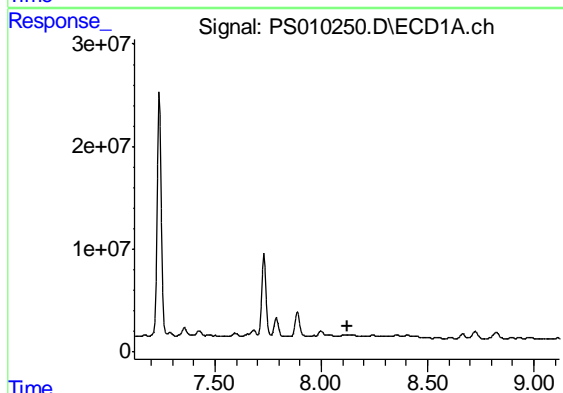
R.T.: 7.730 min
 Delta R.T.: -0.026 min
 Response: 110605582
 Conc: 35.50 ug/ml

Instrument :
 ECD_S
 ClientSampleId :
 PB128805BL



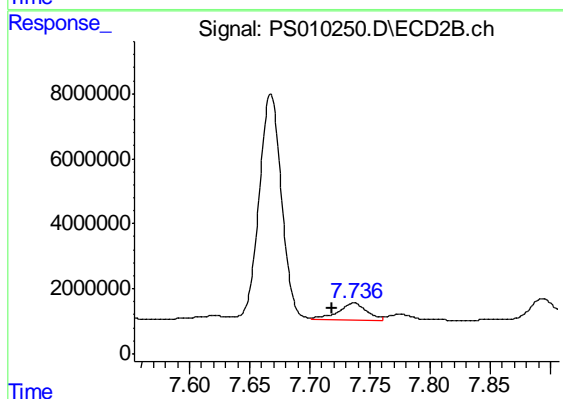
#7 MCPA

R.T.: 7.384 min
 Delta R.T.: -0.030 min
 Response: 27864963
 Conc: 10.24 ug/ml



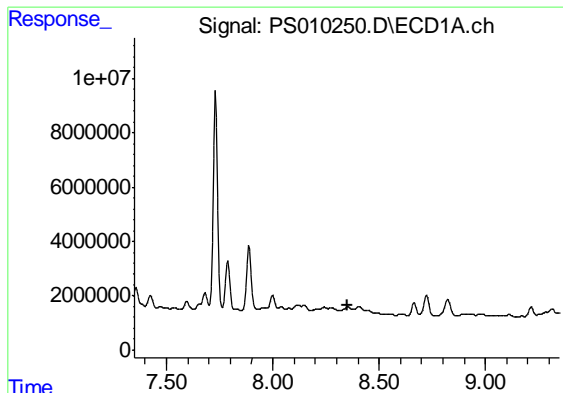
#8 DICHLORPROP

R.T.: 0.000 min
 Exp R.T. : 8.121 min
 Response: 0
 Conc: N.D.



#8 DICHLORPROP

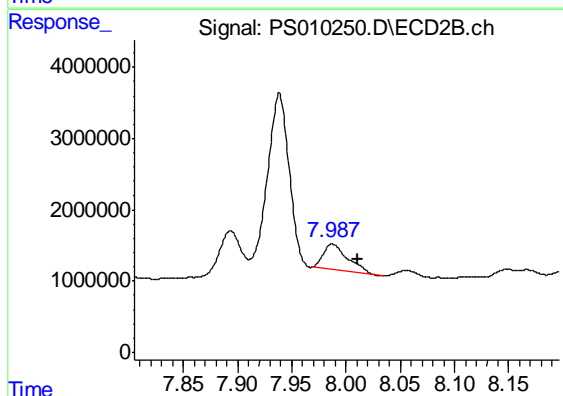
R.T.: 7.737 min
 Delta R.T.: 0.018 min
 Response: 8654699
 Conc: 15.33 ng/ml



#9 2,4-D

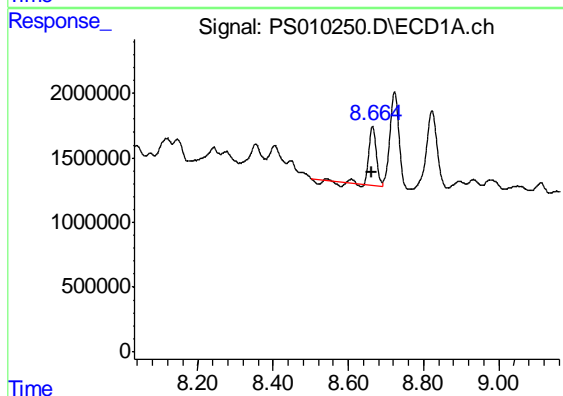
R.T.: 0.000 min
 Exp R.T. : 8.349 min
 Response: 0
 Conc: N.D.

Instrument :
 ECD_S
 ClientSampleId :
 PB128805BL



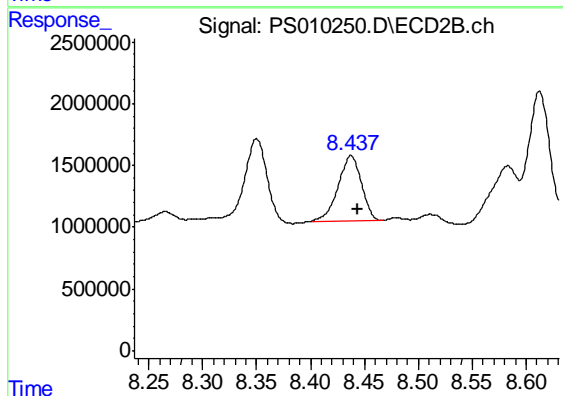
#9 2,4-D

R.T.: 7.988 min
 Delta R.T.: -0.024 min
 Response: 5725936
 Conc: 8.26 ng/ml



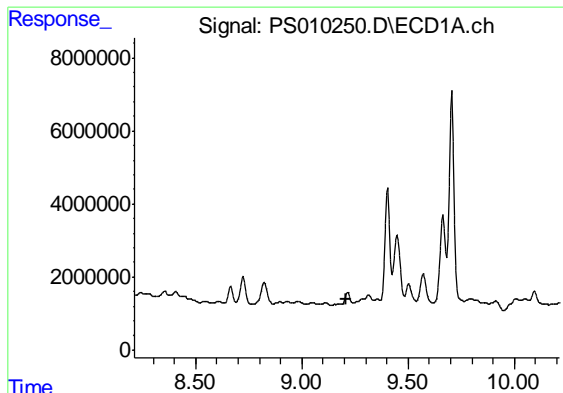
#10 Pentachlorophenol

R.T.: 8.664 min
 Delta R.T.: 0.002 min
 Response: 5922891
 Conc: N.D.



#10 Pentachlorophenol

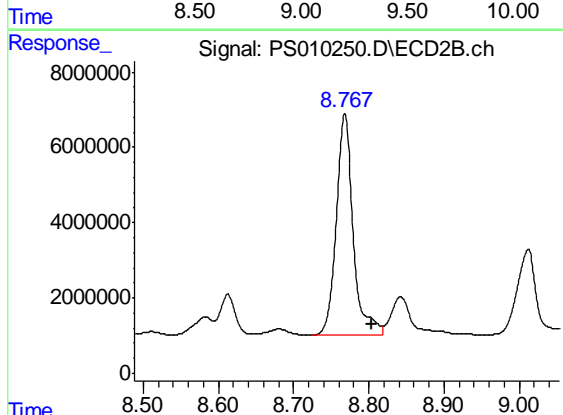
R.T.: 8.438 min
 Delta R.T.: -0.006 min
 Response: 7899025
 Conc: 1.17 ng/ml



#11 2,4,5-TP (SILVEX)

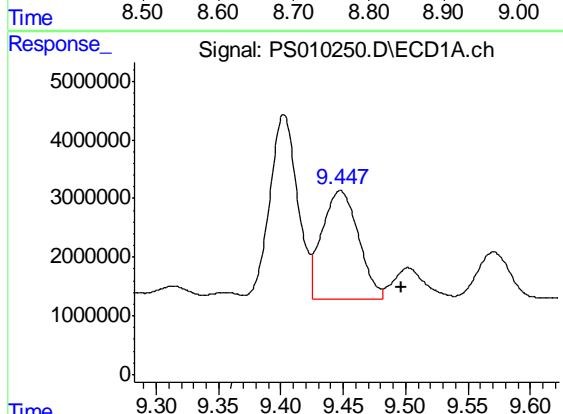
R.T.: 0.000 min
 Exp R.T. : 9.212 min
 Response: 0
 Conc: N.D.

Instrument :
 ECD_S
 ClientSampleId :
 PB128805BL



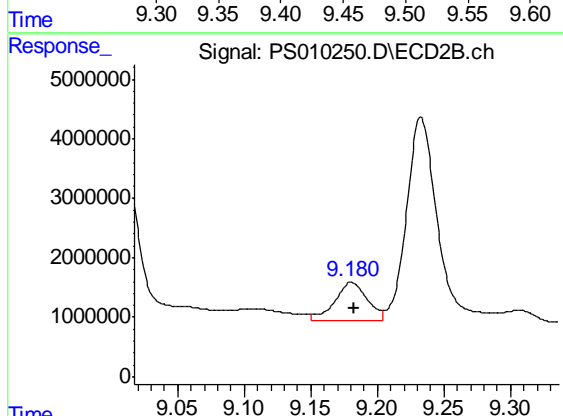
#11 2,4,5-TP (SILVEX)

R.T.: 8.768 min
 Delta R.T.: -0.036 min
 Response: 92613075
 Conc: 31.97 ng/ml



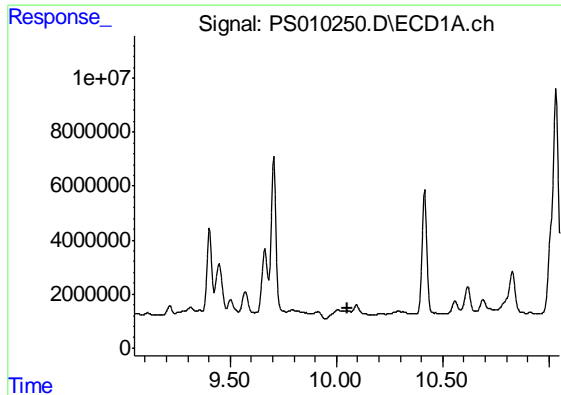
#12 2,4,5-T

R.T.: 9.448 min
 Delta R.T.: -0.049 min
 Response: 37590186
 Conc: 10.68 ng/ml



#12 2,4,5-T

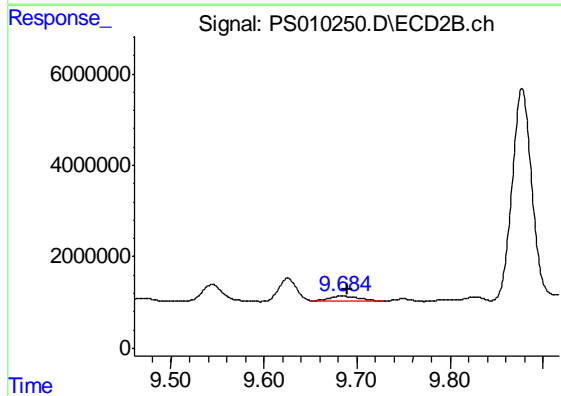
R.T.: 9.181 min
 Delta R.T.: -0.002 min
 Response: 10889037
 Conc: 3.75 ng/ml



#13 2,4-DB

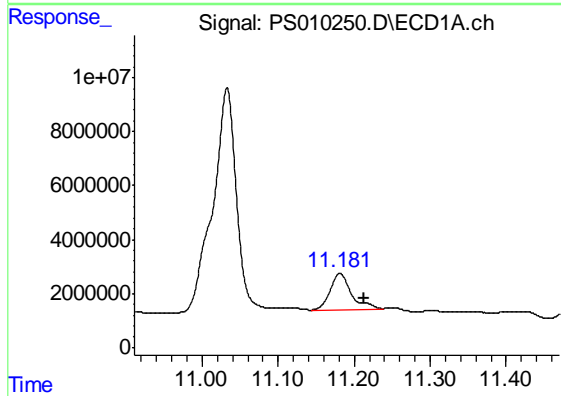
R.T.: 0.000 min
 Exp R.T.: 10.050 min
 Response: 0
 Conc: N.D.

Instrument :
 ECD_S
 ClientSampleId :
 PB128805BL



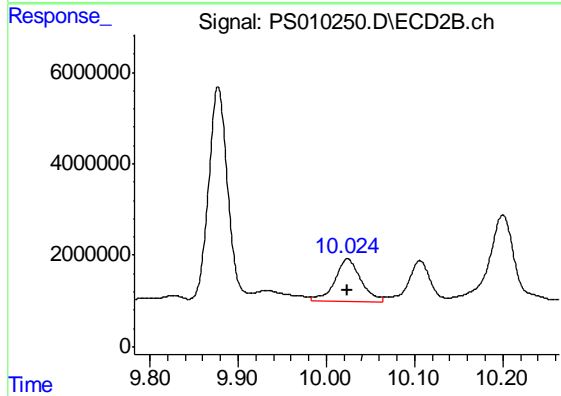
#13 2,4-DB

R.T.: 9.684 min
 Delta R.T.: -0.005 min
 Response: 2286575
 Conc: 5.74 ng/ml



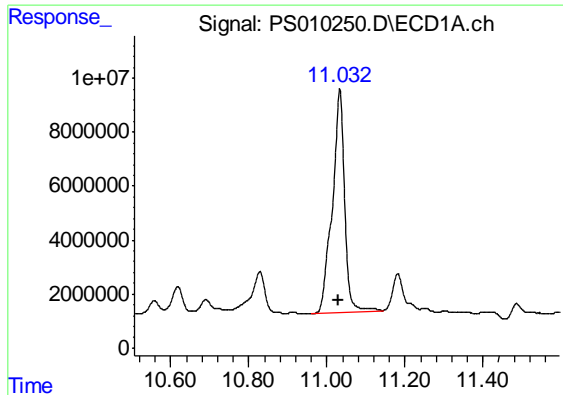
#14 DINOSEB

R.T.: 11.181 min
 Delta R.T.: -0.032 min
 Response: 25703452
 Conc: 9.38 ng/ml



#14 DINOSEB

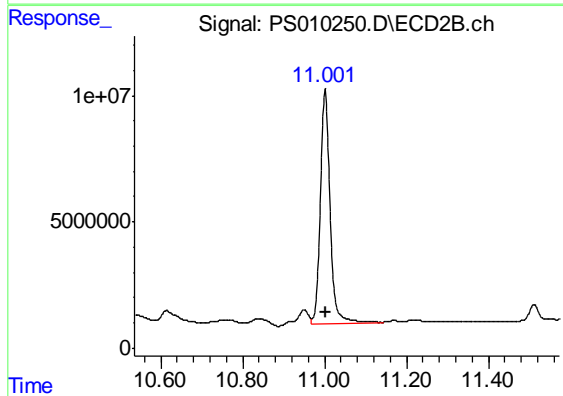
R.T.: 10.024 min
 Delta R.T.: 0.000 min
 Response: 19305277
 Conc: 9.06 ng/ml



#15 Picloram

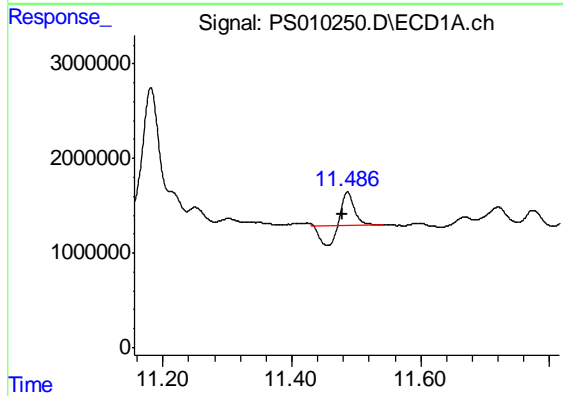
R.T.: 11.033 min
 Delta R.T.: 0.003 min
 Response: 179779247
 Conc: 39.21 ng/ml

Instrument :
 ECD_S
 ClientSampleId :
 PB128805BL



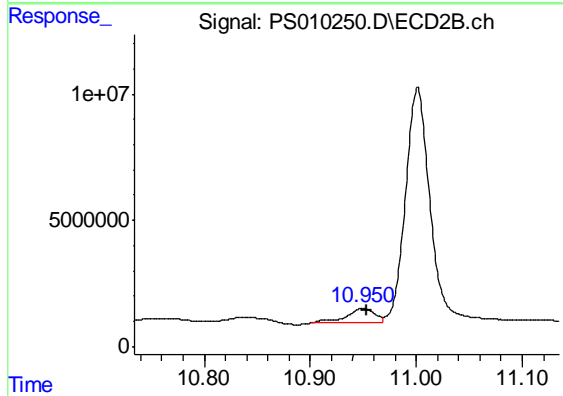
#15 Picloram

R.T.: 11.001 min
 Delta R.T.: -0.003 min
 Response: 151803006
 Conc: 35.96 ng/ml



#16 DCPA

R.T.: 11.486 min
 Delta R.T.: 0.008 min
 Response: 2031108
 Conc: N.D.



#16 DCPA

R.T.: 10.950 min
 Delta R.T.: -0.004 min
 Response: 10300219
 Conc: 2.88 ng/ml