

Data Path : Z:\pestpcbsrv\HPCHEM1\ECD_S\Data\PS051322\
 Data File : PS019408.D
 Signal(s) : Signal #1: ECD1A.ch Signal #2: ECD2B.ch
 Acq On : 13 May 2022 13:34
 Operator : AJ\MA
 Sample : N2749-19MSD
 Misc :
 ALS Vial : 7 Sample Multiplier: 1

Instrument :
 ECD_S
 ClientSampleId :

Integration File signal 1: autoint1.e
 Integration File signal 2: autoint2.e
 Quant Time: May 13 17:10:45 2022
 Quant Method : Z:\pestpcbsrv\HPCHEM1\ECD_S\Method\PS050422.M
 Quant Title : 8080.M
 QLast Update : Wed May 04 16:27:11 2022
 Response via : Initial Calibration
 Integrator: ChemStation

Volume Inj. : 2 µl
 Signal #1 Phase : Rtx-CLPesticides Signal #2 Phase: Rtx-CLPesticides2
 Signal #1 Info : 30M x 0.32mm x0.5 Signal #2 Info : 30M x 0.32mm x 0.25µm

	Compound	RT#1	RT#2	Resp#1	Resp#2	ng/ml	ng/ml

System Monitoring Compounds							
4) S	2,4-DCAA	7.218	6.797	620.9E6	211.1E6	227.379	272.606
Target Compounds							
1) T	Dalapon	3.025	2.529	974.1E6	73159974	201.768	82.302 #
2) T	3,5-DICHL...	6.429	5.974	690.5E6	198.4E6	195.353	170.105
3) T	4-Nitroph...	7.049	6.414	168.0E6	41479133	173.316	117.560 #
5) T	DICAMBA	7.408	6.963	2497.0E6	783.9E6	226.091	233.957
6) T	MCP P	7.574	7.055	141.0E6	43720623	15.769	16.440
7) T	MCPA	7.723	7.266	223.4E6	87759280	17.926	23.562 #
8) T	DICHLORPROP	8.101	7.585	461.1E6	172.9E6	164.832	201.713
9) T	2,4-D	8.332	7.877	848.1E6	266.2E6	268.834	266.563
10) T	Pentachlo...	8.640	8.305	4364.5E6	1349.7E6	111.094	120.061
11) T	2,4,5-TP ...	9.191	8.666	2578.1E6	770.7E6	142.630	160.136
12) T	2,4,5-T	9.480	9.049	3447.3E6	925.2E6	162.985	213.673 #
13) T	2,4-DB	10.030	9.564	294.3E6	797.2E6	68.632	1402.124 #
14) T	DINOSEB	11.152	9.880	5548.4E6	466.7E6	336.034	161.042 #
15) T	Picloram	11.012	10.859	8596.4E6	2198.0E6	294.093	367.508
16) T	DCPA	11.455	10.807	6449.6E6	1960.9E6	246.441	334.022 #

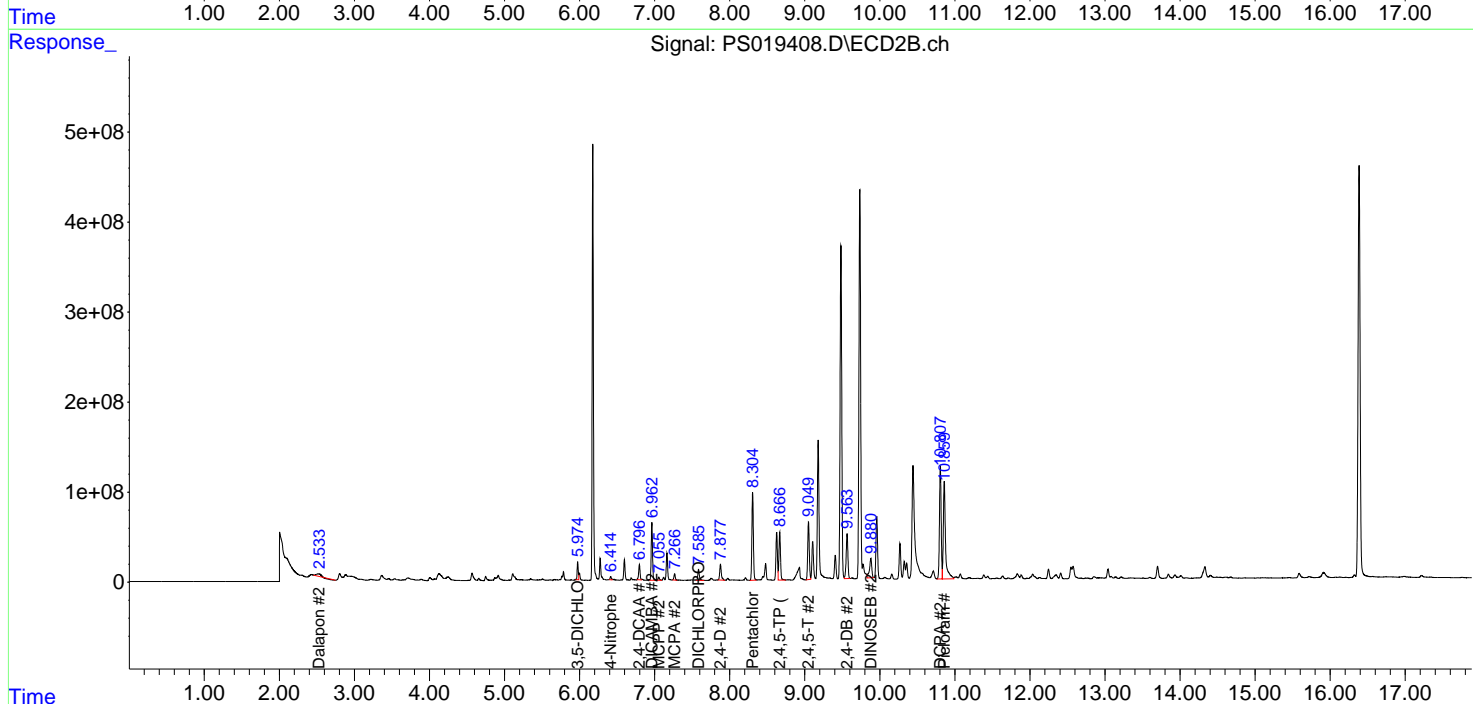
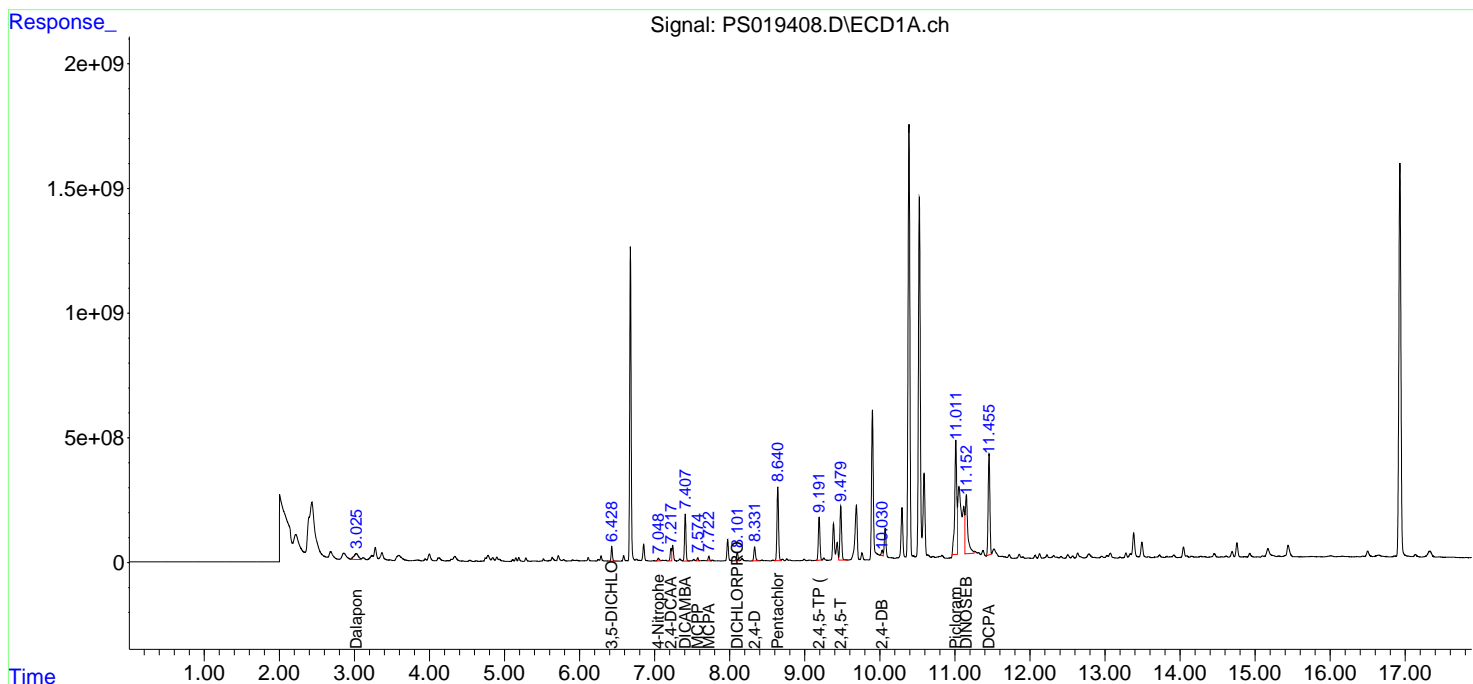
(f)=RT Delta > 1/2 Window (#)=Amounts differ by > 25% (m)=manual int.

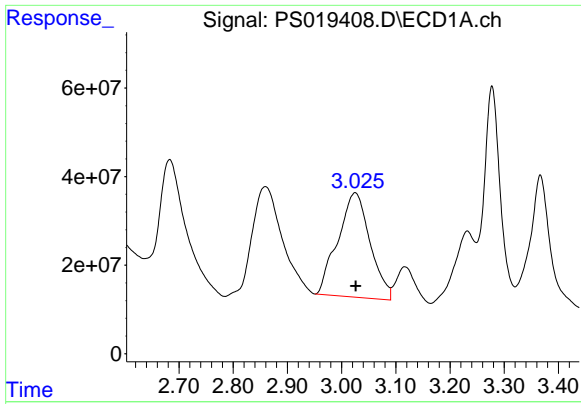
Data Path : Z:\pestpcbsrv\HPCHEM1\ECD_S\Data\PS051322\
 Data File : PS019408.D
 Signal(s) : Signal #1: ECD1A.ch Signal #2: ECD2B.ch
 Acq On : 13 May 2022 13:34
 Operator : AJ\MA
 Sample : N2749-19MSD
 Misc :
 ALS Vial : 7 Sample Multiplier: 1

Instrument :
 ECD_S
 ClientSampleId :

Integration File signal 1: autoint1.e
 Integration File signal 2: autoint2.e
 Quant Time: May 13 17:10:45 2022
 Quant Method : Z:\pestpcbsrv\HPCHEM1\ECD_S\Method\PS050422.M
 Quant Title : 8080.M
 QLast Update : Wed May 04 16:27:11 2022
 Response via : Initial Calibration
 Integrator: ChemStation

Volume Inj. : 2 µl
 Signal #1 Phase : Rtx-CLPesticides Signal #2 Phase: Rtx-CLPesticides2
 Signal #1 Info : 30M x 0.32mm x0.5 Signal #2 Info : 30M x 0.32mm x 0.25µm

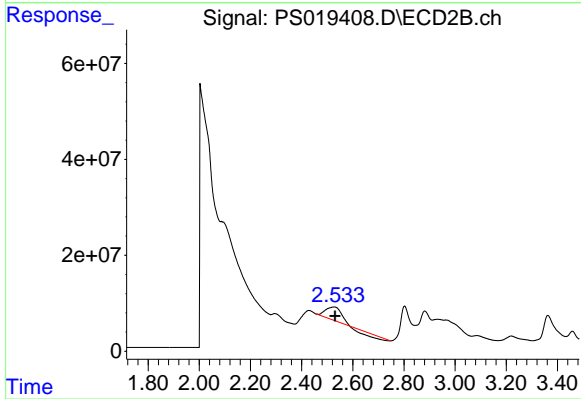




#1 Dalapon

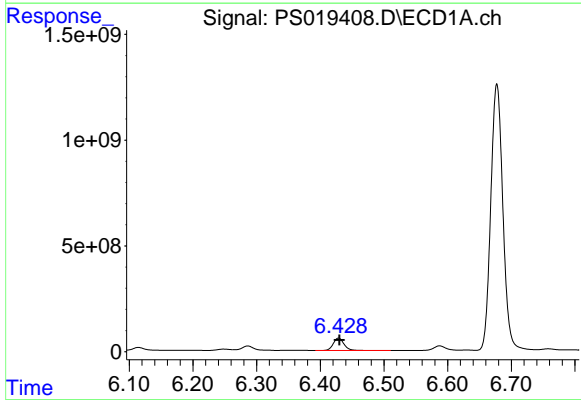
R.T.: 3.025 min
 Delta R.T.: -0.001 min
 Response: 974075787
 Conc: 201.77 ng/ml

Instrument :
 ECD_S
 ClientSampleId :



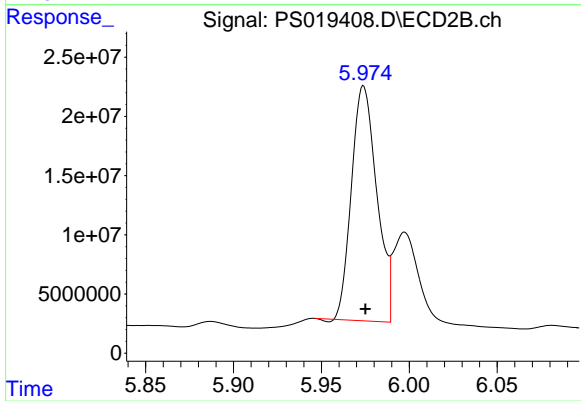
#1 Dalapon

R.T.: 2.529 min
 Delta R.T.: -0.002 min
 Response: 73159974
 Conc: 82.30 ng/ml



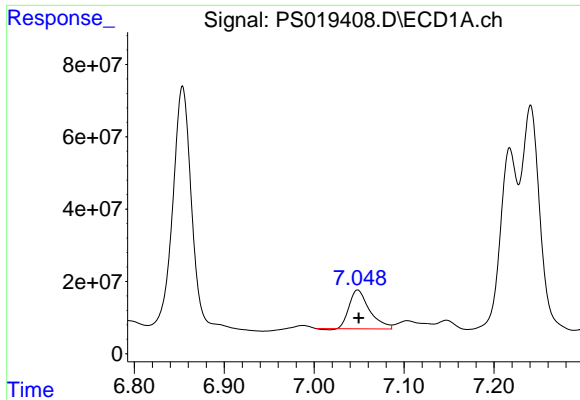
#2 3,5-DICHLOROBENZOIC ACID

R.T.: 6.429 min
 Delta R.T.: -0.001 min
 Response: 690510076
 Conc: 195.35 ng/ml



#2 3,5-DICHLOROBENZOIC ACID

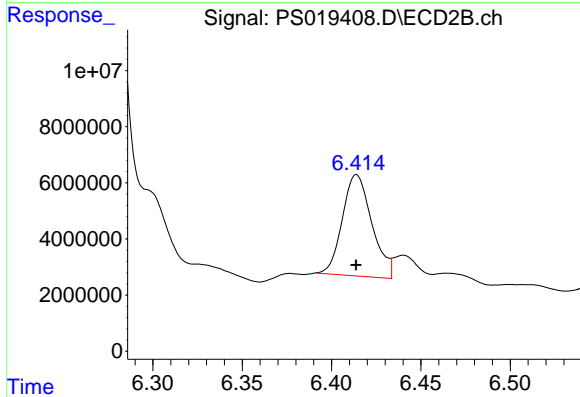
R.T.: 5.974 min
 Delta R.T.: 0.000 min
 Response: 198383588
 Conc: 170.10 ng/ml



#3 4-Nitrophenol

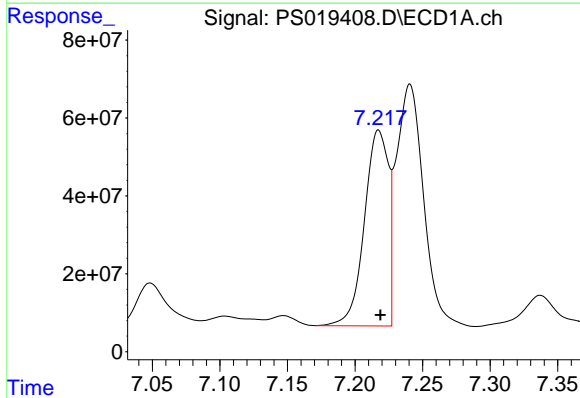
R.T.: 7.049 min
 Delta R.T.: -0.001 min
 Response: 167958972
 Conc: 173.32 ng/ml

Instrument :
 ECD_S
 ClientSampleId :



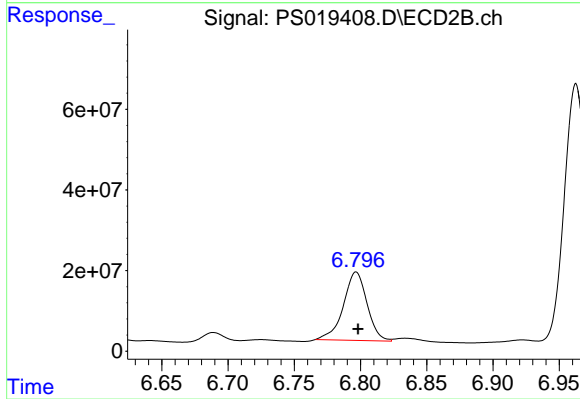
#3 4-Nitrophenol

R.T.: 6.414 min
 Delta R.T.: 0.000 min
 Response: 41479133
 Conc: 117.56 ng/ml



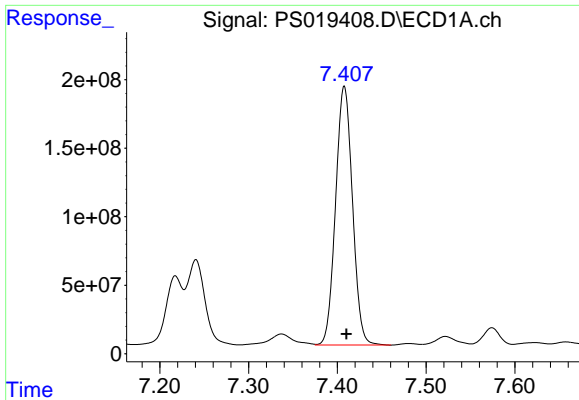
#4 2,4-DCAA

R.T.: 7.218 min
 Delta R.T.: 0.000 min
 Response: 620943346
 Conc: 227.38 ng/ml



#4 2,4-DCAA

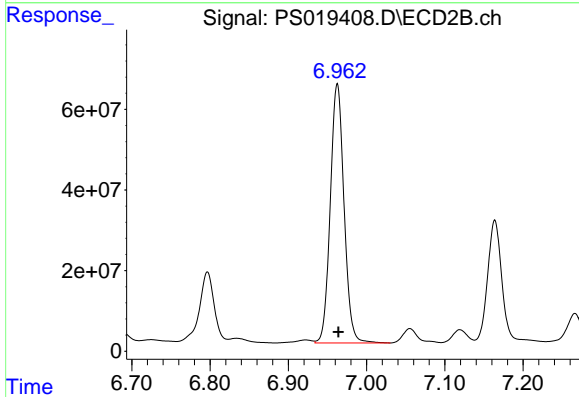
R.T.: 6.797 min
 Delta R.T.: -0.001 min
 Response: 211148299
 Conc: 272.61 ng/ml



#5 DICAMBA

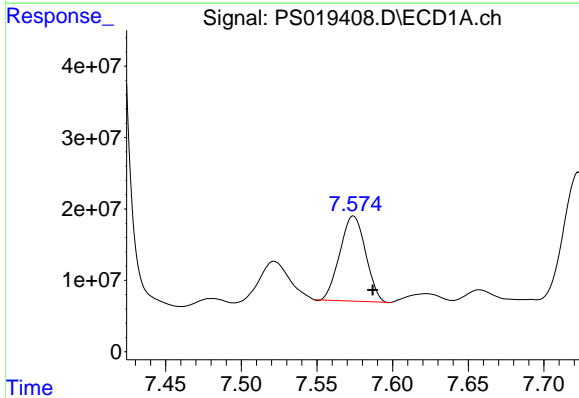
R.T.: 7.408 min
 Delta R.T.: -0.002 min
 Response: 2497022752
 Conc: 226.09 ng/ml

Instrument :
 ECD_S
 ClientSampleId :



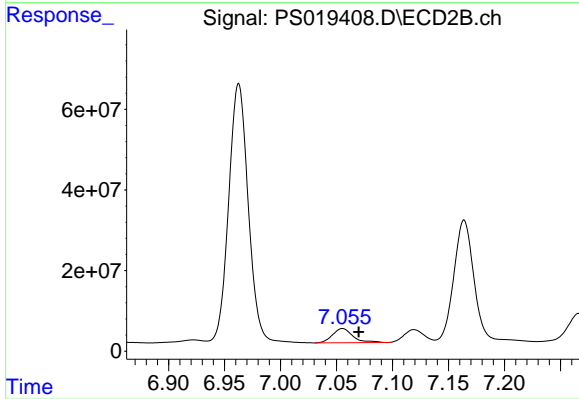
#5 DICAMBA

R.T.: 6.963 min
 Delta R.T.: -0.001 min
 Response: 783948024
 Conc: 233.96 ng/ml



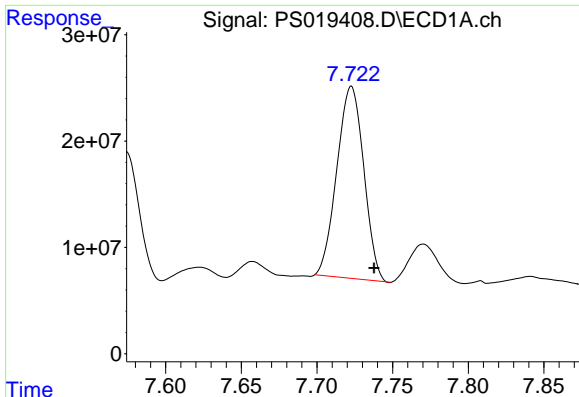
#6 MCP

R.T.: 7.574 min
 Delta R.T.: -0.013 min
 Response: 140962158
 Conc: 15.77 ug/ml



#6 MCP

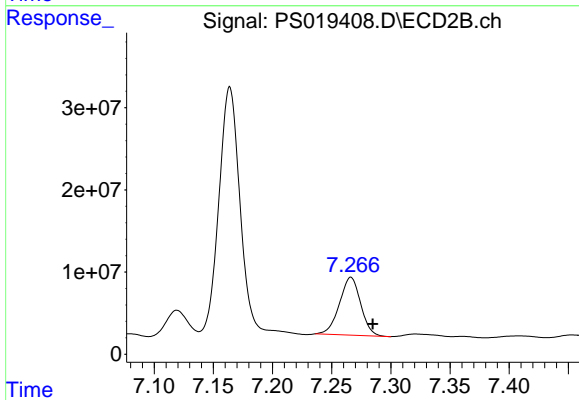
R.T.: 7.055 min
 Delta R.T.: -0.015 min
 Response: 43720623
 Conc: 16.44 ug/ml



#7 MCPA

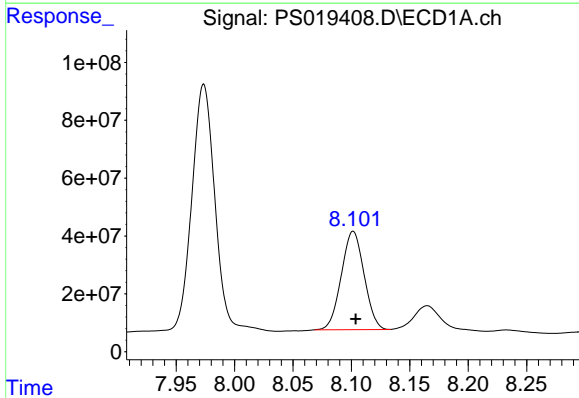
R.T.: 7.723 min
 Delta R.T.: -0.015 min
 Response: 223409595
 Conc: 17.93 ug/ml

Instrument :
 ECD_S
 ClientSampleId :



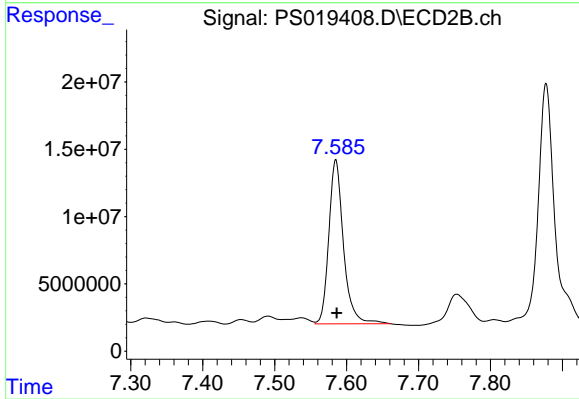
#7 MCPA

R.T.: 7.266 min
 Delta R.T.: -0.019 min
 Response: 87759280
 Conc: 23.56 ug/ml



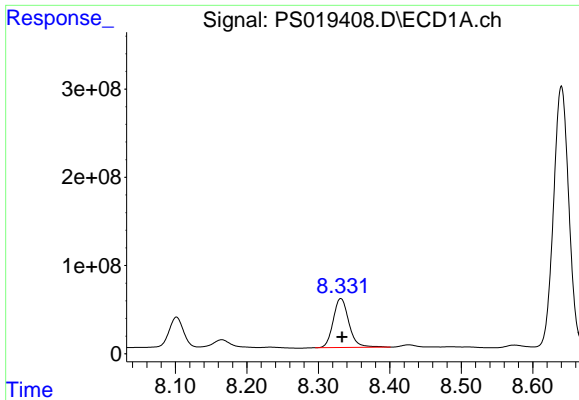
#8 DICHLORPROP

R.T.: 8.101 min
 Delta R.T.: -0.002 min
 Response: 461129112
 Conc: 164.83 ng/ml



#8 DICHLORPROP

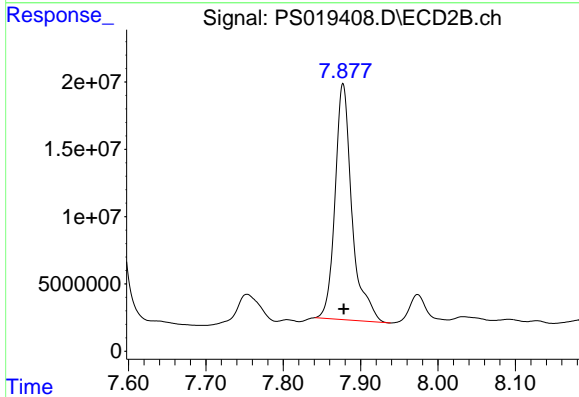
R.T.: 7.585 min
 Delta R.T.: -0.002 min
 Response: 172867681
 Conc: 201.71 ng/ml



#9 2,4-D

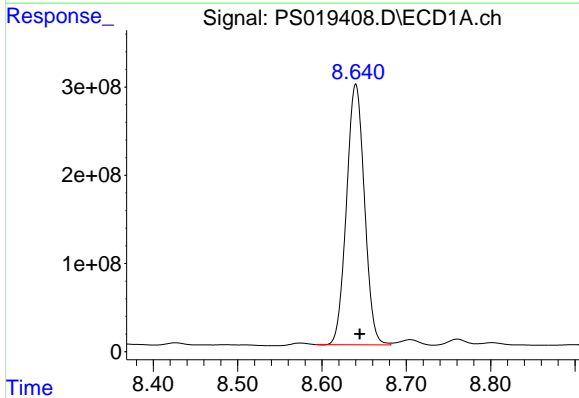
R.T.: 8.332 min
 Delta R.T.: -0.002 min
 Response: 848115096
 Conc: 268.83 ng/ml

Instrument :
 ECD_S
 ClientSampleId :



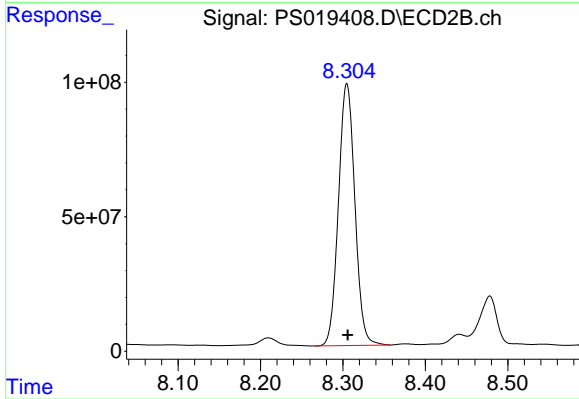
#9 2,4-D

R.T.: 7.877 min
 Delta R.T.: 0.000 min
 Response: 266198407
 Conc: 266.56 ng/ml



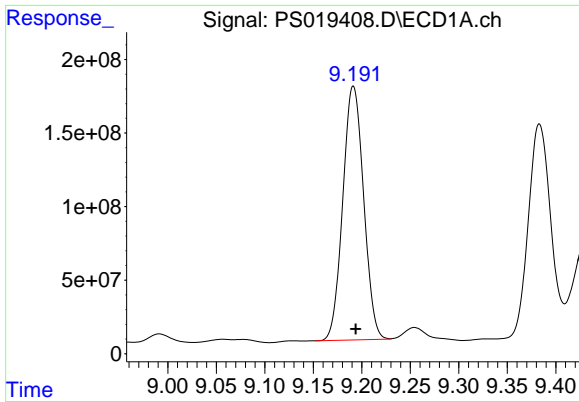
#10 Pentachlorophenol

R.T.: 8.640 min
 Delta R.T.: -0.005 min
 Response: 4364512345
 Conc: 111.09 ng/ml



#10 Pentachlorophenol

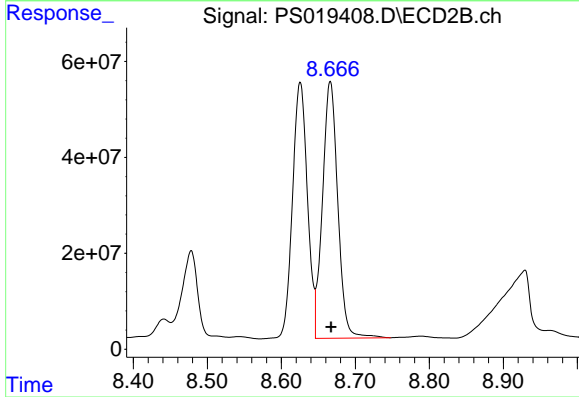
R.T.: 8.305 min
 Delta R.T.: -0.001 min
 Response: 1349659397
 Conc: 120.06 ng/ml



#11 2,4,5-TP (SILVEX)

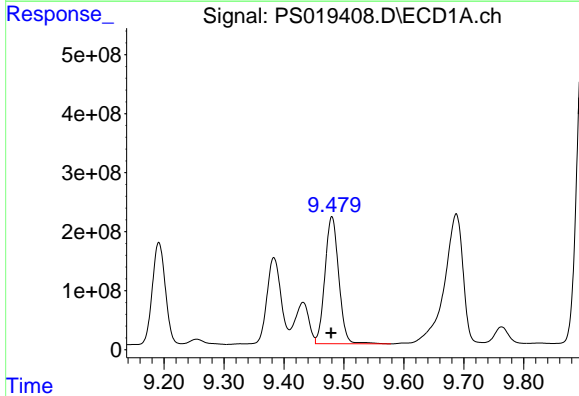
R.T.: 9.191 min
 Delta R.T.: -0.002 min
 Response: 2578050169
 Conc: 142.63 ng/ml

Instrument :
 ECD_S
 ClientSampleId :



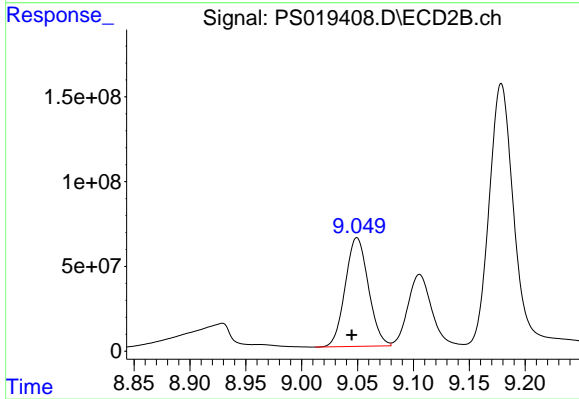
#11 2,4,5-TP (SILVEX)

R.T.: 8.666 min
 Delta R.T.: -0.001 min
 Response: 770663087
 Conc: 160.14 ng/ml



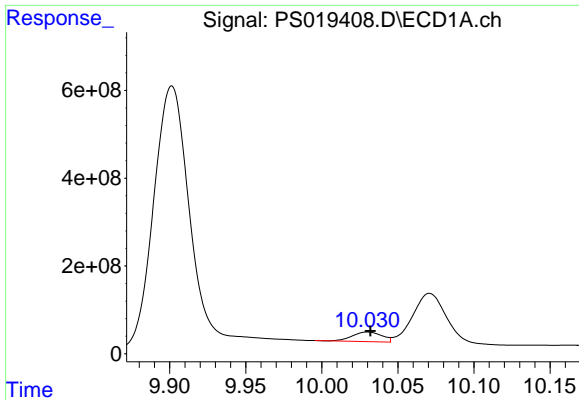
#12 2,4,5-T

R.T.: 9.480 min
 Delta R.T.: 0.001 min
 Response: 3447317700
 Conc: 162.99 ng/ml



#12 2,4,5-T

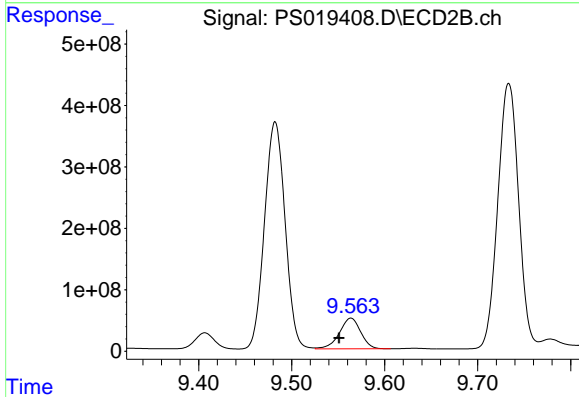
R.T.: 9.049 min
 Delta R.T.: 0.005 min
 Response: 925216918
 Conc: 213.67 ng/ml



#13 2,4-DB

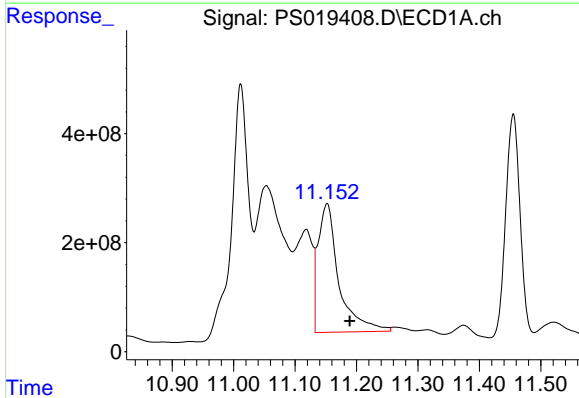
R.T.: 10.030 min
 Delta R.T.: -0.002 min
 Response: 294311325
 Conc: 68.63 ng/ml

Instrument :
 ECD_S
 ClientSampleId :



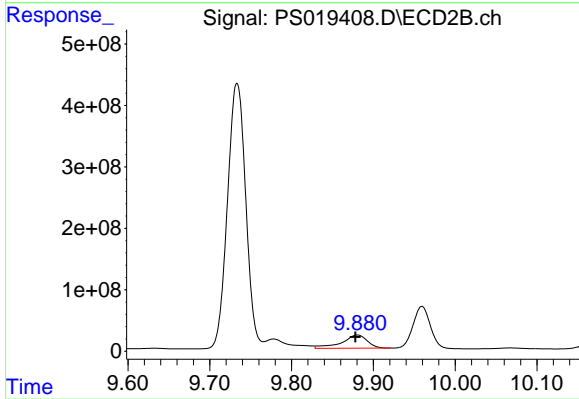
#13 2,4-DB

R.T.: 9.564 min
 Delta R.T.: 0.013 min
 Response: 797194606
 Conc: 1402.12 ng/ml



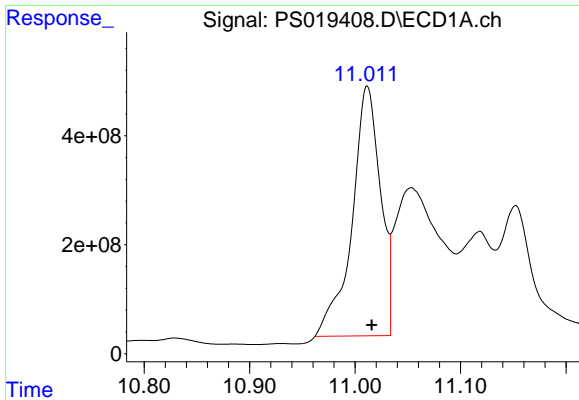
#14 DINOSEB

R.T.: 11.152 min
 Delta R.T.: -0.037 min
 Response: 5548368594
 Conc: 336.03 ng/ml



#14 DINOSEB

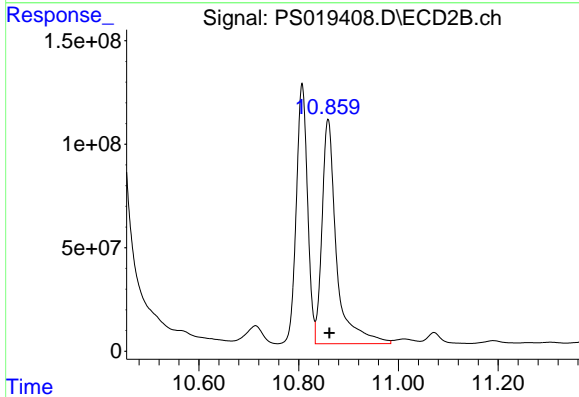
R.T.: 9.880 min
 Delta R.T.: 0.002 min
 Response: 466681687
 Conc: 161.04 ng/ml



#15 Picloram

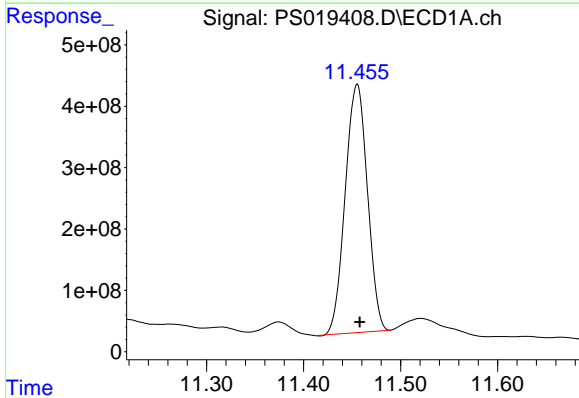
R.T.: 11.012 min
 Delta R.T.: -0.004 min
 Response: 8596359928
 Conc: 294.09 ng/ml

Instrument :
 ECD_S
 ClientSampleId :



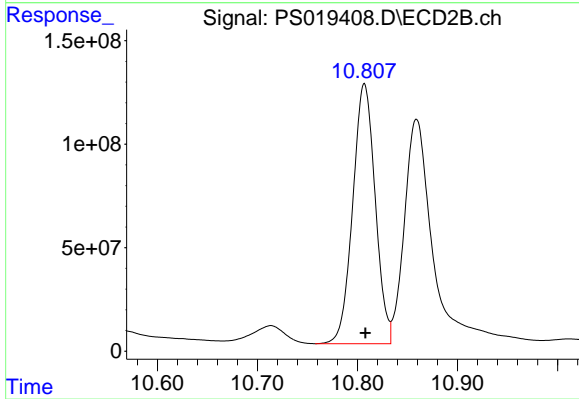
#15 Picloram

R.T.: 10.859 min
 Delta R.T.: -0.002 min
 Response: 2197991216
 Conc: 367.51 ng/ml



#16 DCPA

R.T.: 11.455 min
 Delta R.T.: -0.003 min
 Response: 6449596742
 Conc: 246.44 ng/ml



#16 DCPA

R.T.: 10.807 min
 Delta R.T.: -0.001 min
 Response: 1960867261
 Conc: 334.02 ng/ml