

Data Path : Z:\pestpcbsrv\HPCHEM1\ECD\_S\Data\PS051325\  
 Data File : PS030154.D  
 Signal(s) : Signal #1: ECD1A.ch Signal #2: ECD2B.ch  
 Acq On : 13 May 2025 13:40  
 Operator : AR\AJ  
 Sample : Q1986-07  
 Misc :  
 ALS Vial : 7 Sample Multiplier: 1

Instrument :  
 ECD\_S  
 ClientSampleId :  
 COMP-11

Integration File signal 1: autoint1.e  
 Integration File signal 2: autoint2.e  
 Quant Time: May 13 14:04:44 2025  
 Quant Method : Z:\pestpcbsrv\HPCHEM1\ECD\_S\Method\PS042325.M  
 Quant Title : 8080.M  
 QLast Update : Wed Apr 23 12:57:40 2025  
 Response via : Initial Calibration  
 Integrator: ChemStation

Volume Inj. : 1 µl  
 Signal #1 Phase : ZB-MR2 Signal #2 Phase: ZB-MR2  
 Signal #1 Info : 30M x 0.32mm x0.5 Signal #2 Info : 30M x 0.32mm x 0.25µm

Compound	RT#1	RT#2	Resp#1	Resp#2	ng/ml	ng/ml
-----						
System Monitoring Compounds						
4) S 2,4-DCAA	6.933	7.453	783.5E6	195.1E6	318.343	276.871
Target Compounds						
1) T Dalapon	2.424	2.512	843.4E6	1151.8E6	205.934	663.426 #
2) T 3,5-DICHL...	6.131	6.467	4376280	3508190	1.225	3.589 #
3) T 4-Nitroph...	6.721	6.982	11502285	9729086	6.450	12.702 #
5) T DICAMBA	7.124	7.672	4768477	1960841	<MDL	<MDL #
6) T MCPP	7.288	7.771	13042559	17124246	2.024	9.791 #
7) T MCPA	7.444	7.982	25350441	24391859	2.871	10.310 #
8) T DICHLORPROP	7.816	8.350	39731208	37607111	15.679	37.459 #
9) T 2,4-D	7.972f	8.620f	149.4E6	16665238	53.117	14.786 #
10) T Pentachlo...	8.332f	9.138f	65372934	8465478	1.874	<MDL #
11) T 2,4,5-TP ...	8.877	9.554	2731868	92955600	<MDL	11.361 #
12) T 2,4,5-T	9.170f	9.956	124.6E6	76527605	8.866	9.859
13) T 2,4-DB	9.713	10.493	201.9E6	33912252	88.330	42.135 #
14) T DINOSEB	10.885	0.000	26751417	0	2.630	N.D. #
15) T Picloram	10.666	11.924	54935921	100.7E6	2.997	8.200 #
16) T DCPA	0.000	11.924	0	100.7E6	N.D.	8.936
-----						

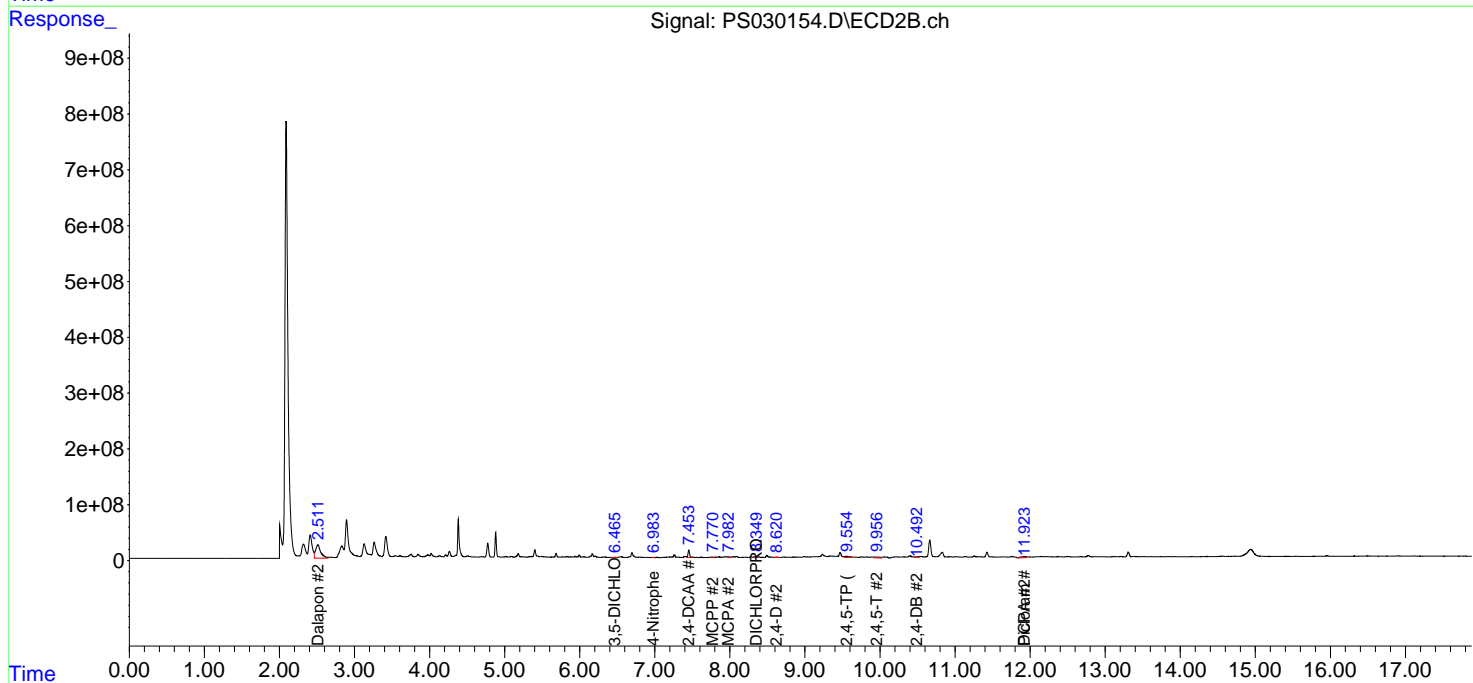
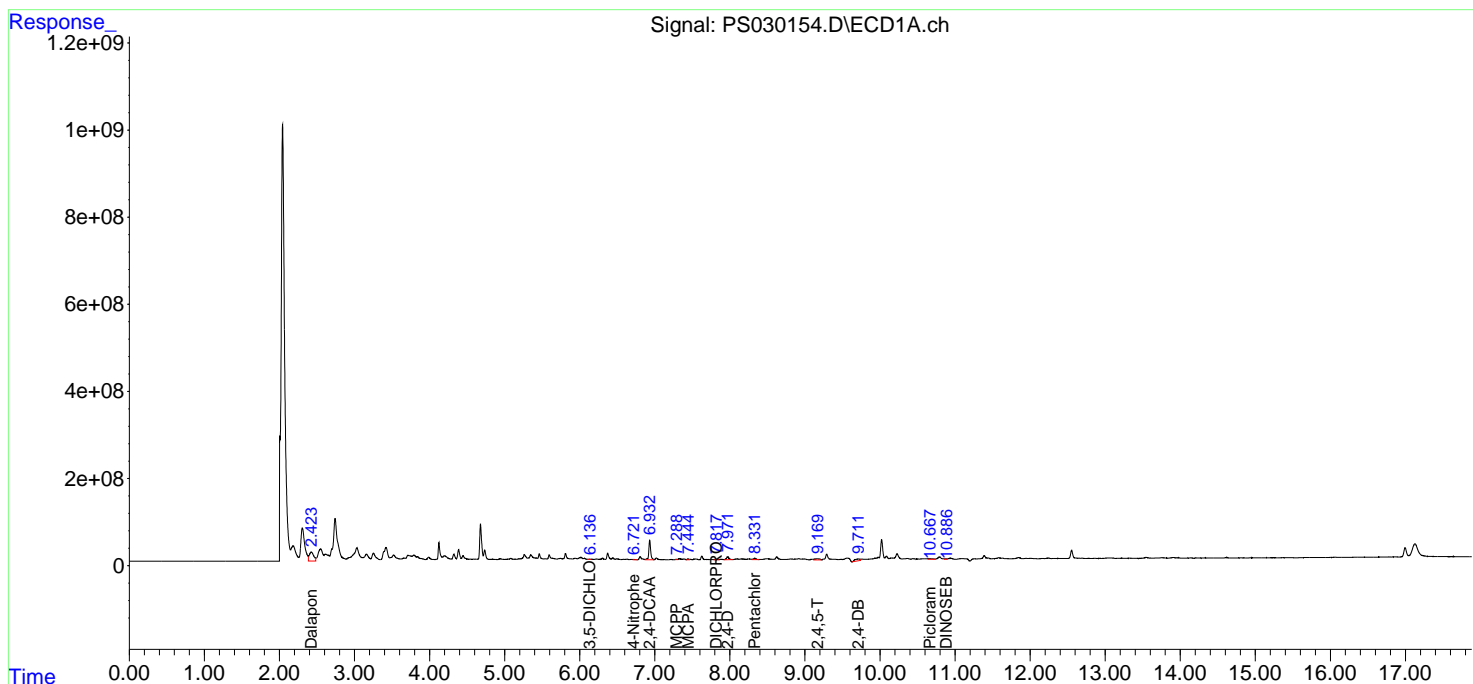
(f)=RT Delta > 1/2 Window (#)=Amounts differ by > 25% (m)=manual int.

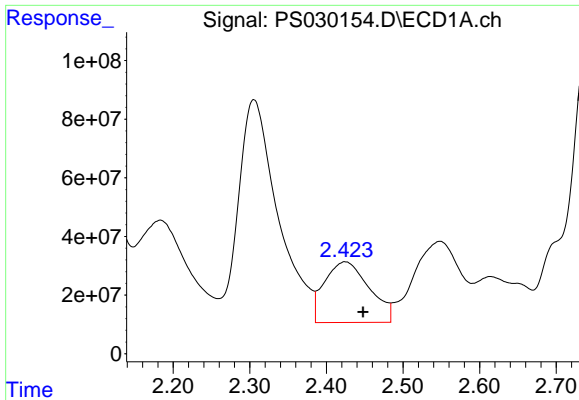
Data Path : Z:\pestpcbsrv\HPCHEM1\ECD\_S\Data\PS051325\  
 Data File : PS030154.D  
 Signal(s) : Signal #1: ECD1A.ch Signal #2: ECD2B.ch  
 Acq On : 13 May 2025 13:40  
 Operator : AR\AJ  
 Sample : Q1986-07  
 Misc :  
 ALS Vial : 7 Sample Multiplier: 1

Instrument :  
 ECD\_S  
 ClientSampleId :  
 COMP-11

Integration File signal 1: autoint1.e  
 Integration File signal 2: autoint2.e  
 Quant Time: May 13 14:04:44 2025  
 Quant Method : Z:\pestpcbsrv\HPCHEM1\ECD\_S\Method\PS042325.M  
 Quant Title : 8080.M  
 QLast Update : Wed Apr 23 12:57:40 2025  
 Response via : Initial Calibration  
 Integrator: ChemStation

Volume Inj. : 1 µl  
 Signal #1 Phase : ZB-MR1 Signal #2 Phase: ZB-MR2  
 Signal #1 Info : 30M x 0.32mm x0.5 Signal #2 Info : 30M x 0.32mm x 0.25µm

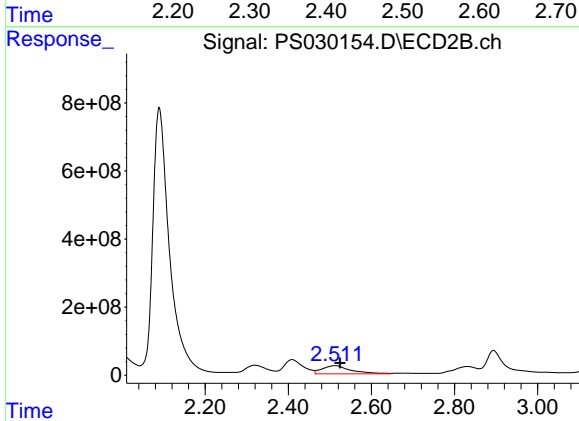




#1 Dalapon

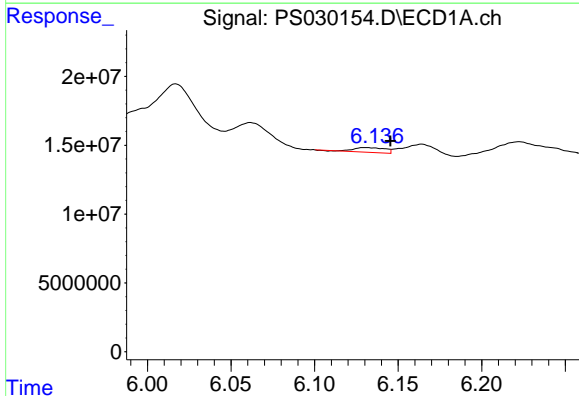
R.T.: 2.424 min  
 Delta R.T.: -0.024 min  
 Response: 843352242  
 Conc: 205.93 ng/ml

Instrument :  
 ECD\_S  
 ClientSampleId :  
 COMP-11



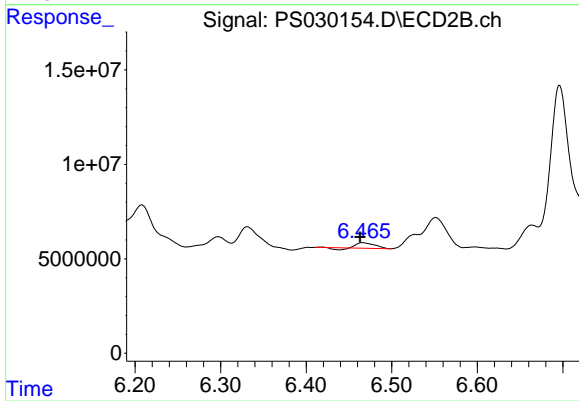
#1 Dalapon

R.T.: 2.512 min  
 Delta R.T.: -0.012 min  
 Response: 1151803274  
 Conc: 663.43 ng/ml



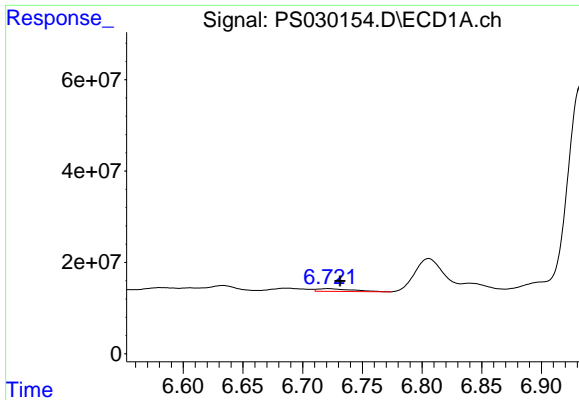
#2 3,5-DICHLOROBENZOIC ACID

R.T.: 6.131 min  
 Delta R.T.: -0.014 min  
 Response: 4376280  
 Conc: 1.22 ng/ml



#2 3,5-DICHLOROBENZOIC ACID

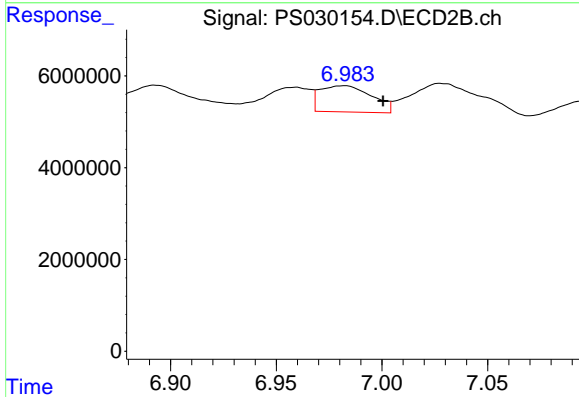
R.T.: 6.467 min  
 Delta R.T.: 0.003 min  
 Response: 3508190  
 Conc: 3.59 ng/ml



#3 4-Nitrophenol

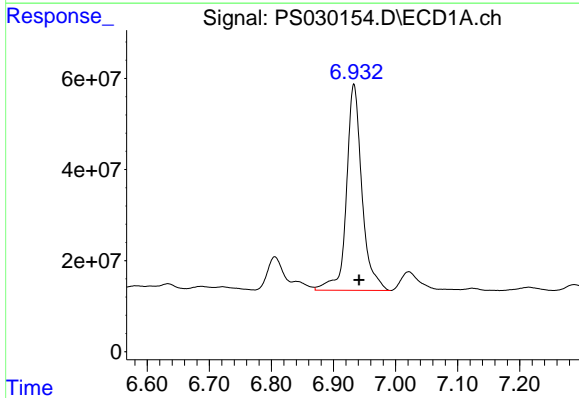
R.T.: 6.721 min  
 Delta R.T.: -0.010 min  
 Response: 11502285  
 Conc: 6.45 ng/ml

Instrument :  
 ECD\_S  
 ClientSampleId :  
 COMP-11



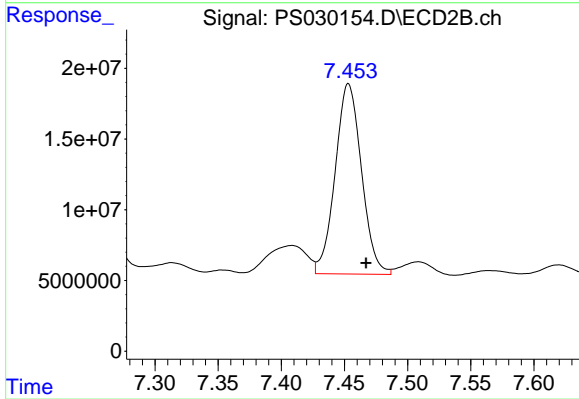
#3 4-Nitrophenol

R.T.: 6.982 min  
 Delta R.T.: -0.019 min  
 Response: 9729086  
 Conc: 12.70 ng/ml



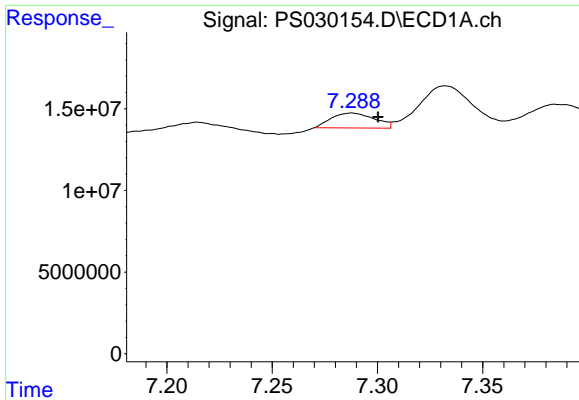
#4 2,4-DCAA

R.T.: 6.933 min  
 Delta R.T.: -0.008 min  
 Response: 783467792  
 Conc: 318.34 ng/ml



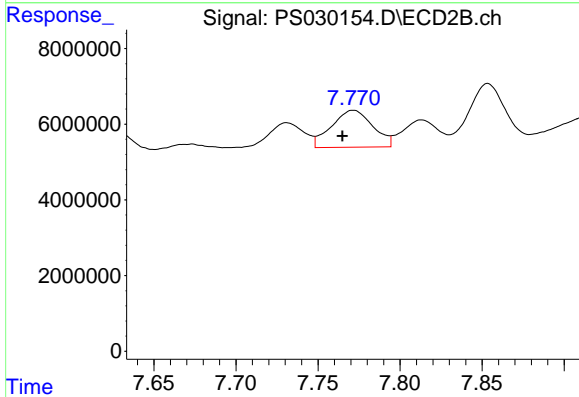
#4 2,4-DCAA

R.T.: 7.453 min  
 Delta R.T.: -0.014 min  
 Response: 195060411  
 Conc: 276.87 ng/ml

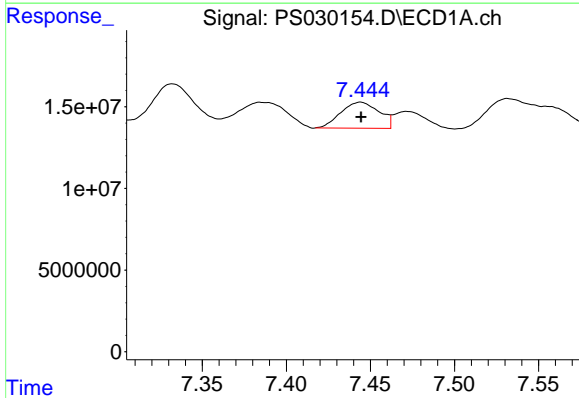


#6 MCPP  
 R.T.: 7.288 min  
 Delta R.T.: -0.013 min  
 Response: 13042559  
 Conc: 2.02 ug/ml

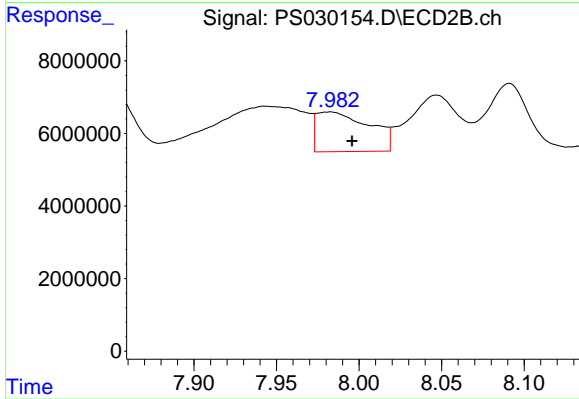
Instrument :  
 ECD\_S  
 ClientSampleId :  
 COMP-11



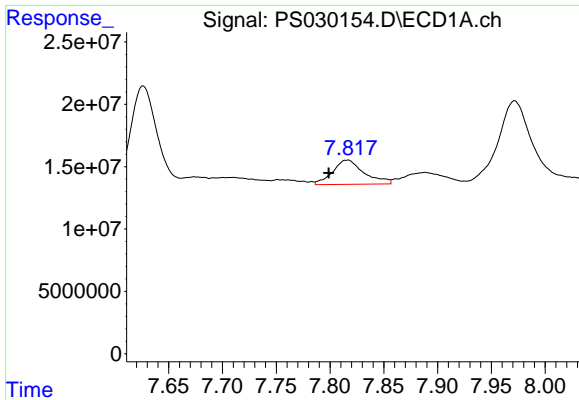
#6 MCPP  
 R.T.: 7.771 min  
 Delta R.T.: 0.007 min  
 Response: 17124246  
 Conc: 9.79 ug/ml



#7 MCPA  
 R.T.: 7.444 min  
 Delta R.T.: 0.000 min  
 Response: 25350441  
 Conc: 2.87 ug/ml



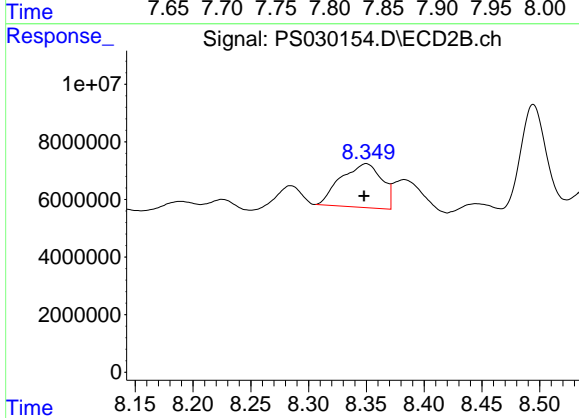
#7 MCPA  
 R.T.: 7.982 min  
 Delta R.T.: -0.014 min  
 Response: 24391859  
 Conc: 10.31 ug/ml



#8 DICHLORPROP

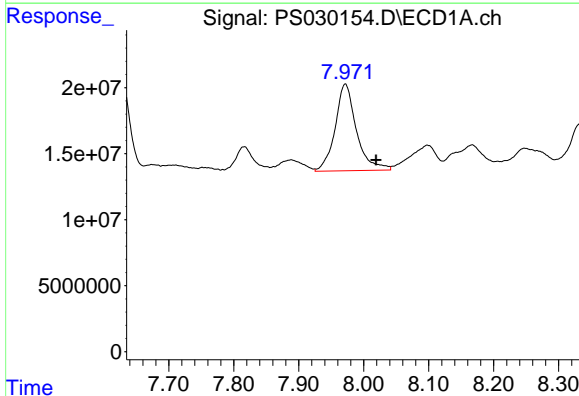
R.T.: 7.816 min  
 Delta R.T.: 0.017 min  
 Response: 39731208  
 Conc: 15.68 ng/ml

Instrument :  
 ECD\_S  
 ClientSampleId :  
 COMP-11



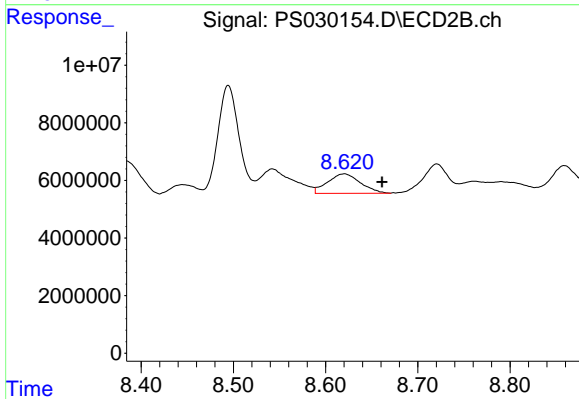
#8 DICHLORPROP

R.T.: 8.350 min  
 Delta R.T.: 0.002 min  
 Response: 37607111  
 Conc: 37.46 ng/ml



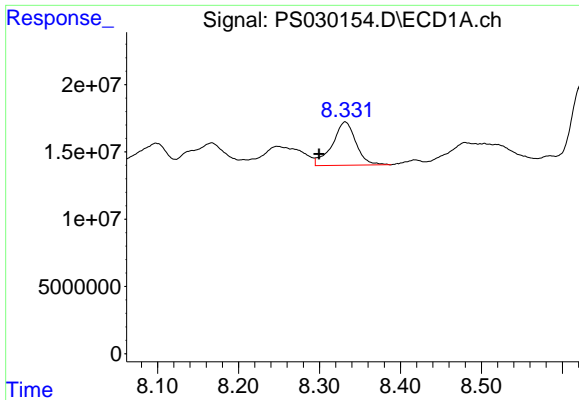
#9 2,4-D

R.T.: 7.972 min  
 Delta R.T.: -0.047 min  
 Response: 149412293  
 Conc: 53.12 ng/ml



#9 2,4-D

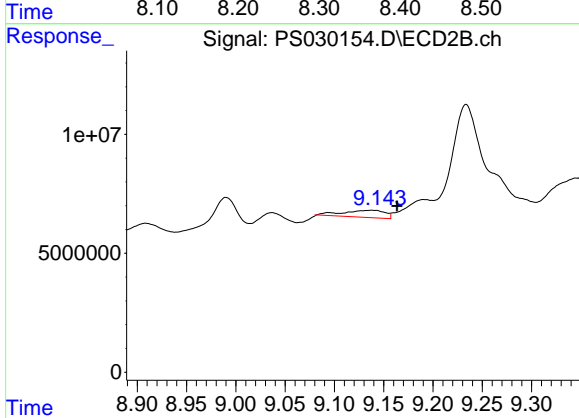
R.T.: 8.620 min  
 Delta R.T.: -0.041 min  
 Response: 16665238  
 Conc: 14.79 ng/ml



#10 Pentachlorophenol

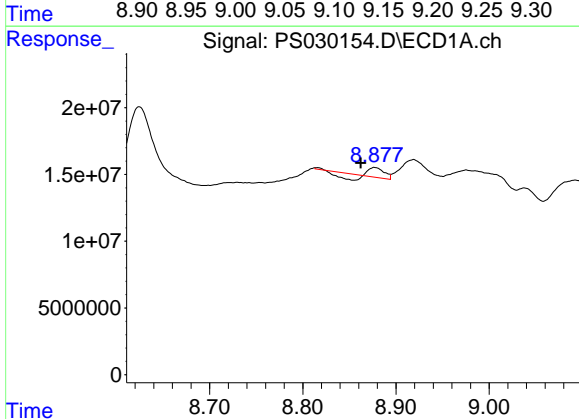
R.T.: 8.332 min  
 Delta R.T.: 0.032 min  
 Response: 65372934  
 Conc: 1.87 ng/ml

Instrument :  
 ECD\_S  
 ClientSampleId :  
 COMP-11



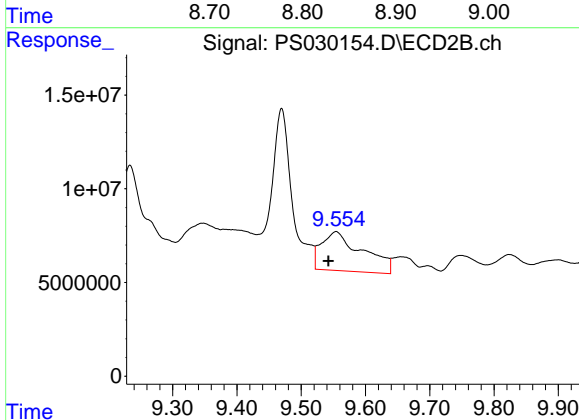
#10 Pentachlorophenol

R.T.: 9.138 min  
 Delta R.T.: -0.025 min  
 Response: 8465478  
 Conc: N.D.



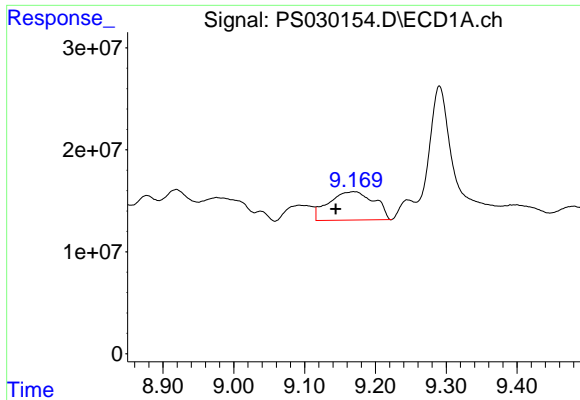
#11 2,4,5-TP (SILVEX)

R.T.: 8.877 min  
 Delta R.T.: 0.015 min  
 Response: 2731868  
 Conc: N.D.



#11 2,4,5-TP (SILVEX)

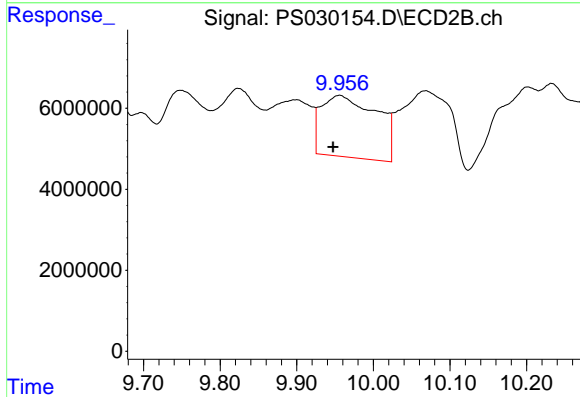
R.T.: 9.554 min  
 Delta R.T.: 0.012 min  
 Response: 92955600  
 Conc: 11.36 ng/ml



#12 2,4,5-T

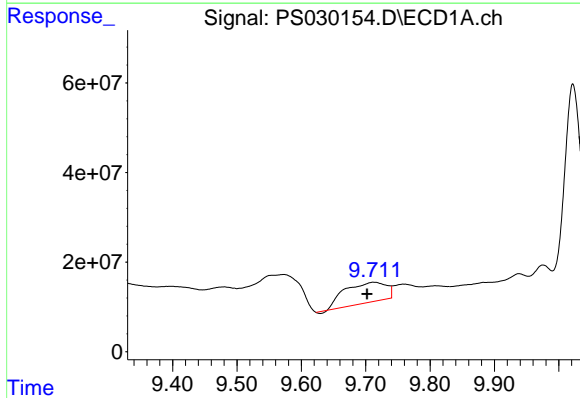
R.T.: 9.170 min  
 Delta R.T.: 0.026 min  
 Response: 124592746  
 Conc: 8.87 ng/ml

Instrument :  
 ECD\_S  
 ClientSampleId :  
 COMP-11



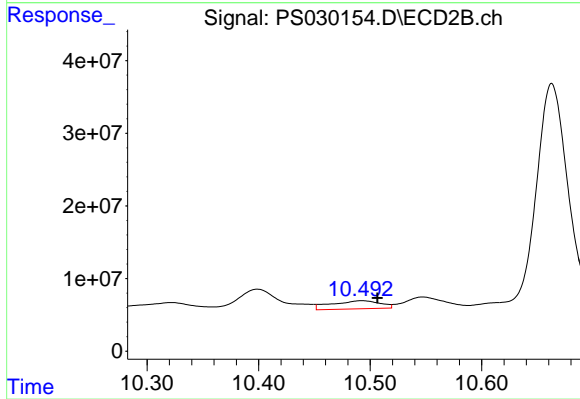
#12 2,4,5-T

R.T.: 9.956 min  
 Delta R.T.: 0.008 min  
 Response: 76527605  
 Conc: 9.86 ng/ml



#13 2,4-DB

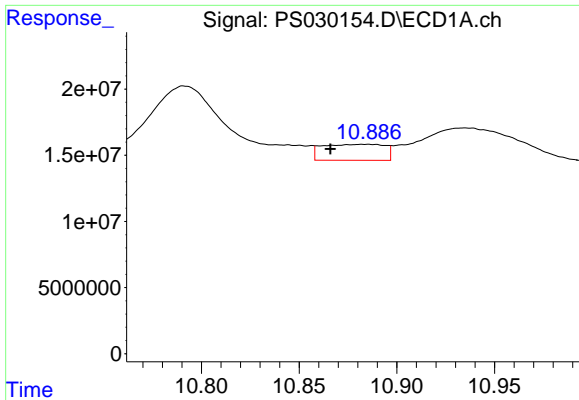
R.T.: 9.713 min  
 Delta R.T.: 0.011 min  
 Response: 201865474  
 Conc: 88.33 ng/ml



#13 2,4-DB

R.T.: 10.493 min  
 Delta R.T.: -0.014 min  
 Response: 33912252  
 Conc: 42.14 ng/ml

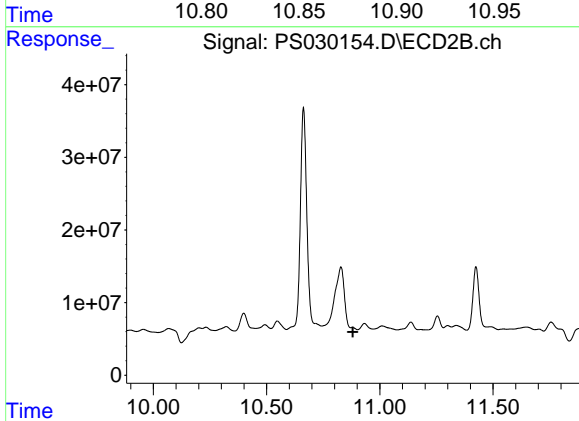




#14 DINOSEB

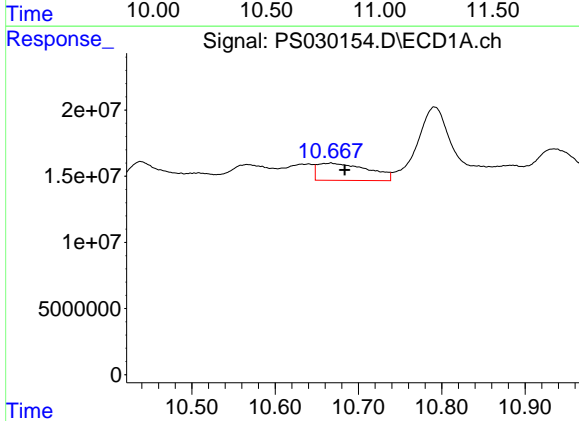
R.T.: 10.885 min  
 Delta R.T.: 0.019 min  
 Response: 26751417  
 Conc: 2.63 ng/ml

Instrument :  
 ECD\_S  
 ClientSampleId :  
 COMP-11



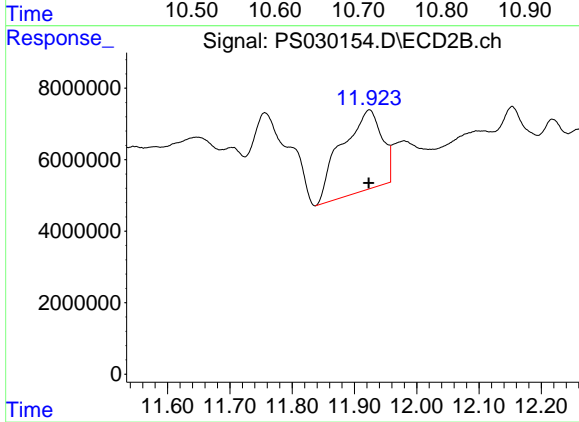
#14 DINOSEB

R.T.: 0.000 min  
 Exp R.T. : 10.881 min  
 Response: 0  
 Conc: N.D.



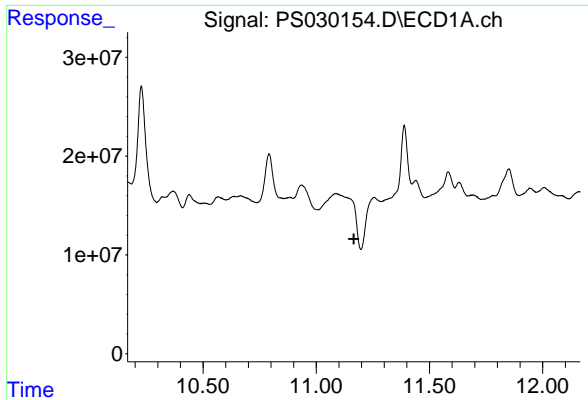
#15 Picloram

R.T.: 10.666 min  
 Delta R.T.: -0.018 min  
 Response: 54935921  
 Conc: 3.00 ng/ml



#15 Picloram

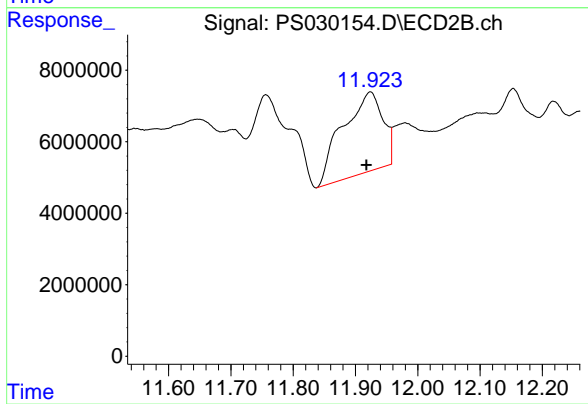
R.T.: 11.924 min  
 Delta R.T.: 0.000 min  
 Response: 100721568  
 Conc: 8.20 ng/ml



#16 DCPA

R.T.: 0.000 min  
 Exp R.T.: 11.166 min  
 Response: 0  
 Conc: N.D.

Instrument :  
 ECD\_S  
 ClientSampleId :  
 COMP-11



#16 DCPA

R.T.: 11.924 min  
 Delta R.T.: 0.006 min  
 Response: 100721568  
 Conc: 8.94 ng/ml