

Data Path : Z:\pestpcbsrv\HPCHEM1\ECD\_S\Data\PS051425\  
 Data File : PS030182.D  
 Signal(s) : Signal #1: ECD1A.ch Signal #2: ECD2B.ch  
 Acq On : 14 May 2025 14:41  
 Operator : AR\AJ  
 Sample : Q2007-19  
 Misc :  
 ALS Vial : 15 Sample Multiplier: 1

**Instrument :**  
 ECD\_S  
**ClientSampleId :**  
 OR-636-COMP-13

**Manual Integrations**  
**APPROVED**  
 Reviewed By :Abdul Mirza 05/15/2025  
 Supervised By :mohammad ahmed 05/20/2025

Integration File signal 1: autoint1.e  
 Integration File signal 2: autoint2.e  
 Quant Time: May 14 15:08:29 2025  
 Quant Method : Z:\pestpcbsrv\HPCHEM1\ECD\_S\Method\PS051225.M  
 Quant Title : 8080.M  
 QLast Update : Mon May 12 14:29:24 2025  
 Response via : Initial Calibration  
 Integrator: ChemStation

Volume Inj. : 1 µl  
 Signal #1 Phase : ZB-MR1 Signal #2 Phase: ZB-MR2  
 Signal #1 Info : 30M x 0.32mm x0.5 Signal #2 Info : 30M x 0.32mm x 0.25µm

Compound	RT#1	RT#2	Resp#1	Resp#2	ng/ml	ng/ml
-----						
System Monitoring Compounds						
4) S 2,4-DCAA	6.933	7.452	890.2E6	211.4E6	312.601	264.183m

Target Compounds  
 -----

(f)=RT Delta > 1/2 Window (#)=Amounts differ by > 25% (m)=manual int.

Data Path : Z:\pestpcbsrv\HPCHEM1\ECD\_S\Data\PS051425\  
 Data File : PS030182.D  
 Signal(s) : Signal #1: ECD1A.ch Signal #2: ECD2B.ch  
 Acq On : 14 May 2025 14:41  
 Operator : AR\AJ  
 Sample : Q2007-19  
 Misc :  
 ALS Vial : 15 Sample Multiplier: 1

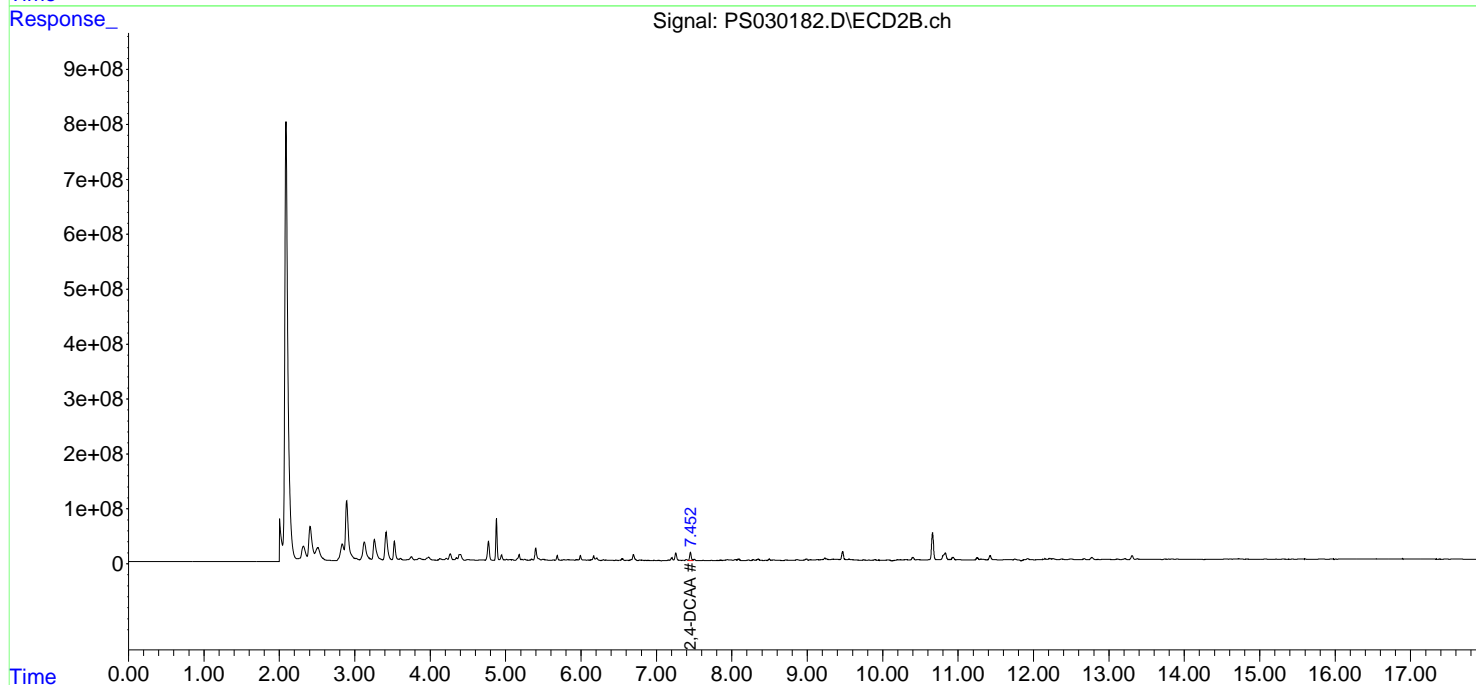
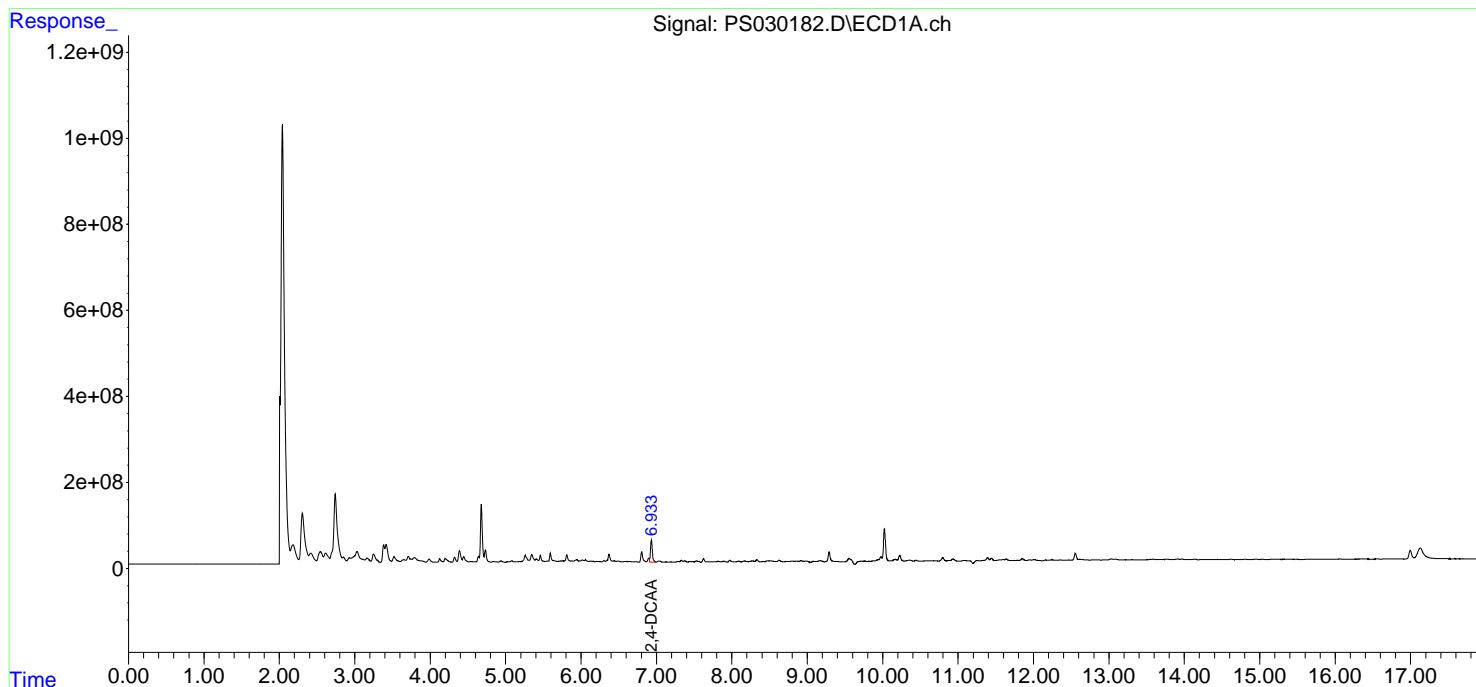
**Instrument :**  
 ECD\_S  
**ClientSampleId :**  
 OR-636-COMP-13

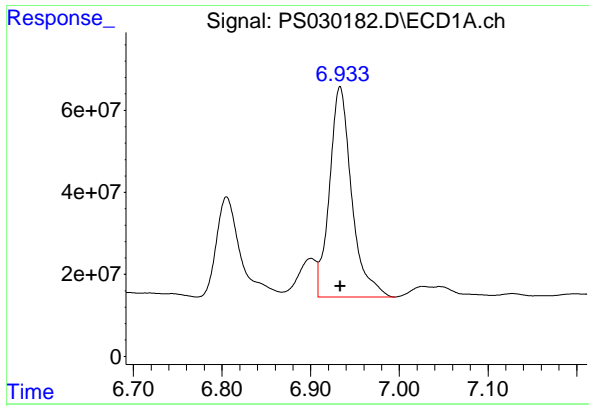
**Manual Integrations**  
**APPROVED**

Reviewed By :Abdul Mirza 05/15/2025  
 Supervised By :mohammad ahmed 05/20/2025

Integration File signal 1: autoint1.e  
 Integration File signal 2: autoint2.e  
 Quant Time: May 14 15:08:29 2025  
 Quant Method : Z:\pestpcbsrv\HPCHEM1\ECD\_S\Method\PS051225.M  
 Quant Title : 8080.M  
 QLast Update : Mon May 12 14:29:24 2025  
 Response via : Initial Calibration  
 Integrator: ChemStation

Volume Inj. : 1 µl  
 Signal #1 Phase : ZB-MR1 Signal #2 Phase: ZB-MR2  
 Signal #1 Info : 30M x 0.32mm x0.5 Signal #2 Info : 30M x 0.32mm x 0.25µm





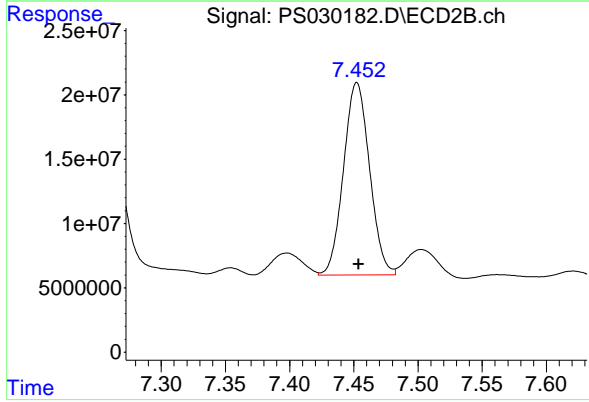
#4 2,4-DCAA

R.T.: 6.933 min  
 Delta R.T.: 0.000 min  
 Response: 890228801  
 Conc: 312.60 ng/ml

Instrument :  
 ECD\_S  
 ClientSampleId :  
 OR-636-COMP-13

Manual Integrations  
 APPROVED

Reviewed By :Abdul Mirza 05/15/2025  
 Supervised By :mohammad ahmed 05/20/2025



#4 2,4-DCAA

R.T.: 7.452 min  
 Delta R.T.: -0.002 min  
 Response: 211399875  
 Conc: 264.18 ng/ml m