

Data Path : Z:\pestpcbsrv\HPCHEM1\ECD_S\Data\PS051425\
 Data File : PS030186.D
 Signal(s) : Signal #1: ECD1A.ch Signal #2: ECD2B.ch
 Acq On : 14 May 2025 16:17
 Operator : AR\AJ
 Sample : Q2007-07MSD
 Misc :
 ALS Vial : 19 Sample Multiplier: 1

Instrument :
 ECD_S
ClientSampleId :
 OR-636-COMP-11MSD

Manual Integrations
APPROVED
 Reviewed By :Abdul Mirza 05/15/2025
 Supervised By :mohammad ahmed 05/20/2025

Integration File signal 1: autoint1.e
 Integration File signal 2: autoint2.e
 Quant Time: May 15 06:38:48 2025
 Quant Method : Z:\pestpcbsrv\HPCHEM1\ECD_S\Method\PS051225.M
 Quant Title : 8080.M
 QLast Update : Mon May 12 14:29:24 2025
 Response via : Initial Calibration
 Integrator: ChemStation

Volume Inj. : 1 µl
 Signal #1 Phase : ZB-MR1 Signal #2 Phase: ZB-MR2
 Signal #1 Info : 30M x 0.32mm x0.5 Signal #2 Info : 30M x 0.32mm x 0.25µm

Compound	RT#1	RT#2	Resp#1	Resp#2	ng/ml	ng/ml

System Monitoring Compounds						
4) S 2,4-DCAA	6.933	7.452	967.8E6	247.5E6	339.846	309.265m
Target Compounds						
1) T Dalapon	2.441	2.517	1951.8E6	906.3E6	397.084	446.211m
2) T 3,5-DICHL...	6.138	6.452	1333.8E6	344.5E6	319.823	295.520m
3) T 4-Nitroph...	6.723	6.987	610.8E6	268.1E6	295.690	256.811m
5) T DICAMBA	7.109	7.637	3307.9E6	1324.5E6	286.212	280.132m
6) T MCPP	7.286	7.744	161.8E6	33787313	22.214m	18.365m
7) T MCPA	7.428	7.973	240.1E6	83346826	23.129	31.598 #
8) T DICHLORPROP	7.790	8.331	1025.5E6	389.0E6	351.037	329.262
9) T 2,4-D	8.009	8.643	1192.9E6	445.8E6	363.800	345.456
10) T Pentachlo...	8.286	9.143	10963.7E6	6610.3E6	270.704	267.785
11) T 2,4,5-TP ...	8.850	9.521	4926.9E6	3164.2E6	304.204	321.221
12) T 2,4,5-T	9.132	9.925	4795.6E6	2798.2E6	290.373	304.028
13) T 2,4-DB	9.691	10.482	579.3E6	266.1E6	221.991m	268.141m
14) T DINOSEB	10.851	10.848	247.8E6	119.3E6	21.672	17.466m
15) T Picloram	10.671	11.889	4925.5E6	3729.6E6	230.304	265.012m
16) T DCPA	11.152	11.885	5708.0E6	3671.4E6	286.670	271.741m

(f)=RT Delta > 1/2 Window (#)=Amounts differ by > 25% (m)=manual int.

Data Path : Z:\pestpcbsrv\HPCHEM1\ECD_S\Data\PS051425\
 Data File : PS030186.D
 Signal(s) : Signal #1: ECD1A.ch Signal #2: ECD2B.ch
 Acq On : 14 May 2025 16:17
 Operator : AR\AJ
 Sample : Q2007-07MSD
 Misc :
 ALS Vial : 19 Sample Multiplier: 1

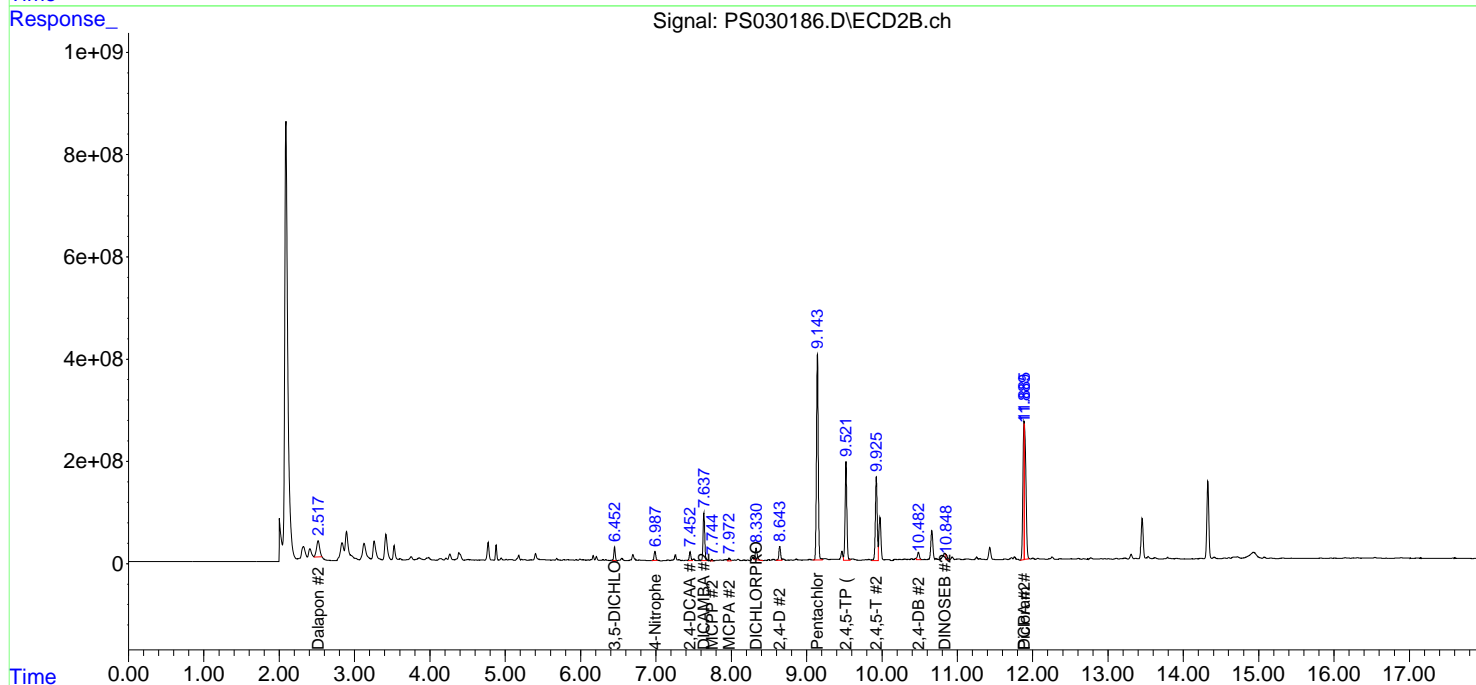
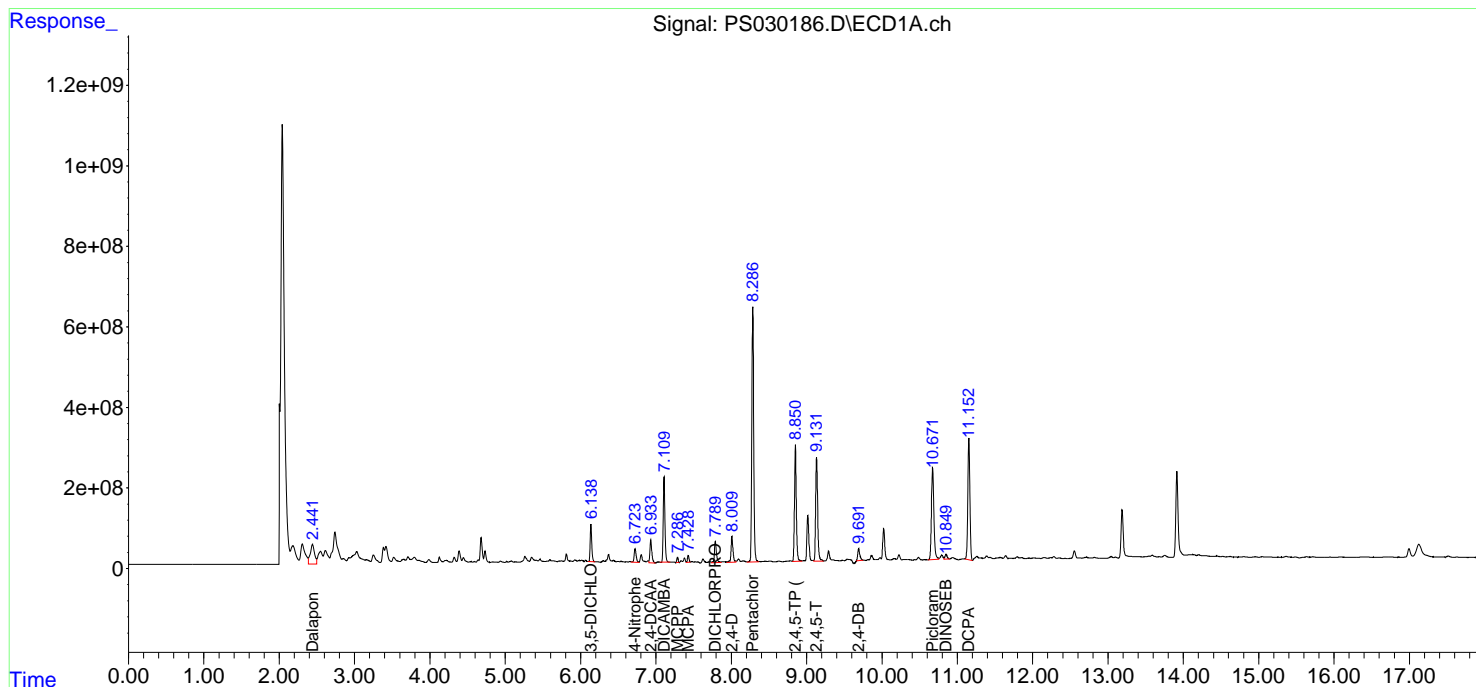
Instrument :
 ECD_S
 ClientSampleId :
 OR-636-COMP-11MSD

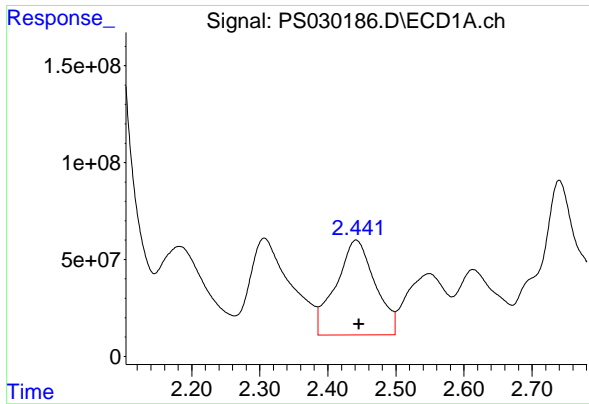
Manual Integrations
 APPROVED

Reviewed By :Abdul Mirza 05/15/2025
 Supervised By :mohammad ahmed 05/20/2025

Integration File signal 1: autoint1.e
 Integration File signal 2: autoint2.e
 Quant Time: May 15 06:38:48 2025
 Quant Method : Z:\pestpcbsrv\HPCHEM1\ECD_S\Method\PS051225.M
 Quant Title : 8080.M
 QLast Update : Mon May 12 14:29:24 2025
 Response via : Initial Calibration
 Integrator: ChemStation

Volume Inj. : 1 µl
 Signal #1 Phase : ZB-MR1 Signal #2 Phase: ZB-MR2
 Signal #1 Info : 30M x 0.32mm x 0.5 Signal #2 Info : 30M x 0.32mm x 0.25µm



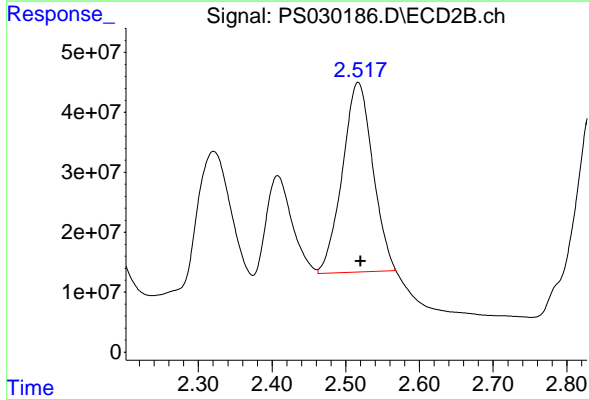


#1 Dalapon
 R.T.: 2.441 min
 Delta R.T.: -0.005 min
 Response: 1951812205
 Conc: 397.08 ng/ml

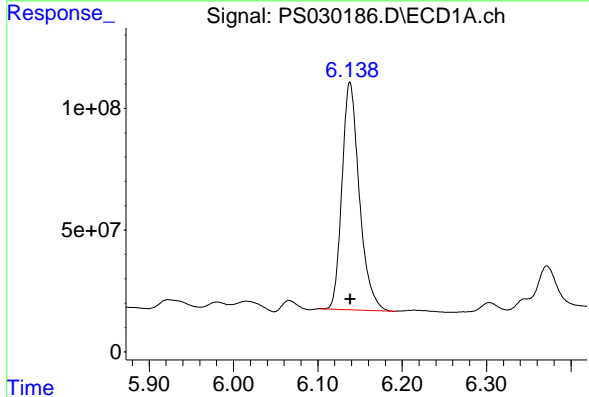
Instrument : ECD_S
 Client Sample Id : OR-636-COMP-11MSD

Manual Integrations
 APPROVED

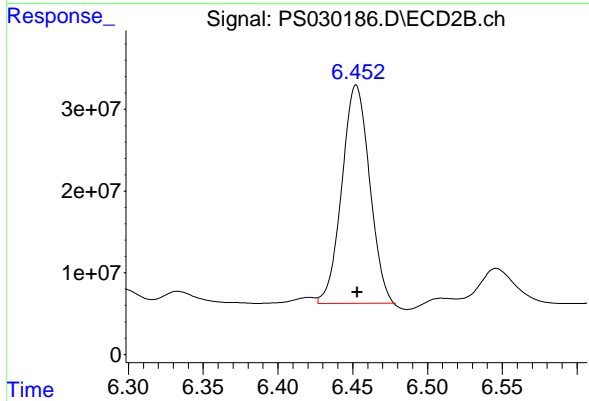
Reviewed By :Abdul Mirza 05/15/2025
 Supervised By :mohammad ahmed 05/20/2025



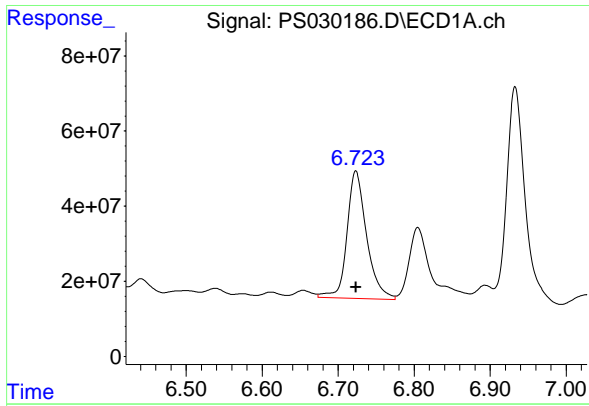
#1 Dalapon
 R.T.: 2.517 min
 Delta R.T.: -0.004 min
 Response: 906277512
 Conc: 446.21 ng/ml m



#2 3,5-DICHLOROBENZOIC ACID
 R.T.: 6.138 min
 Delta R.T.: 0.000 min
 Response: 1333838622
 Conc: 319.82 ng/ml



#2 3,5-DICHLOROBENZOIC ACID
 R.T.: 6.452 min
 Delta R.T.: -0.001 min
 Response: 344525483
 Conc: 295.52 ng/ml m



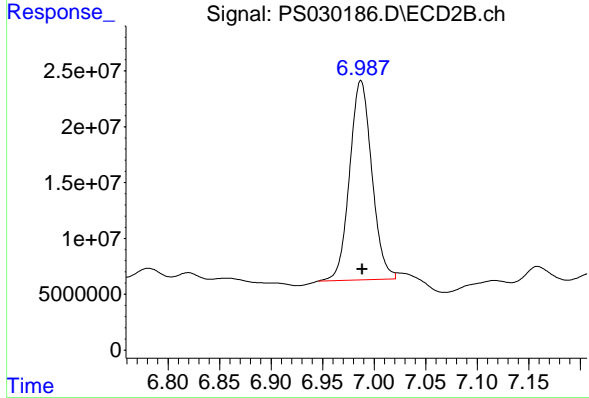
#3 4-Nitrophenol

R.T.: 6.723 min
 Delta R.T.: 0.000 min
 Response: 610781598
 Conc: 295.69 ng/ml

Instrument :
 ECD_S
 ClientSampleId :
 OR-636-COMP-11MSD

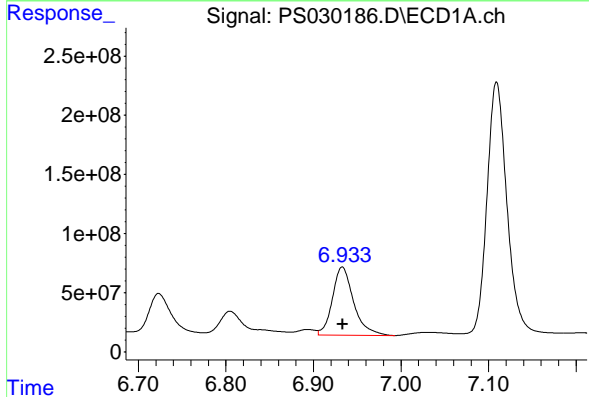
Manual Integrations
 APPROVED

Reviewed By :Abdul Mirza 05/15/2025
 Supervised By :mohammad ahmed 05/20/2025



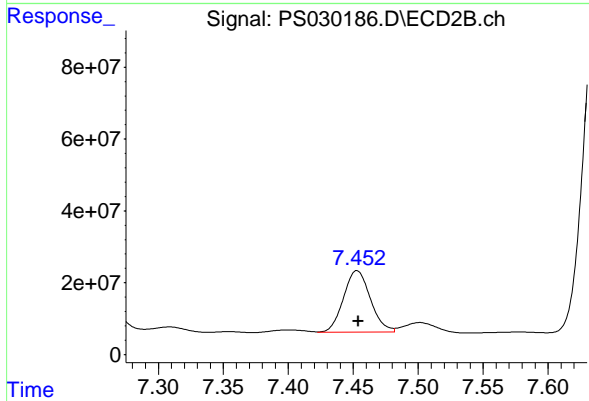
#3 4-Nitrophenol

R.T.: 6.987 min
 Delta R.T.: -0.002 min
 Response: 268119060
 Conc: 256.81 ng/ml m



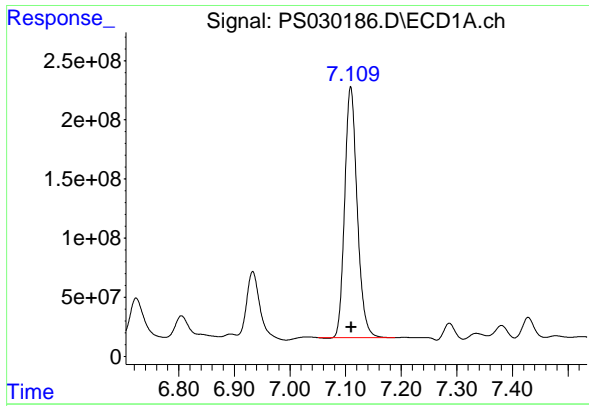
#4 2,4-DCAA

R.T.: 6.933 min
 Delta R.T.: 0.000 min
 Response: 967815039
 Conc: 339.85 ng/ml



#4 2,4-DCAA

R.T.: 7.452 min
 Delta R.T.: -0.001 min
 Response: 247475280
 Conc: 309.27 ng/ml m



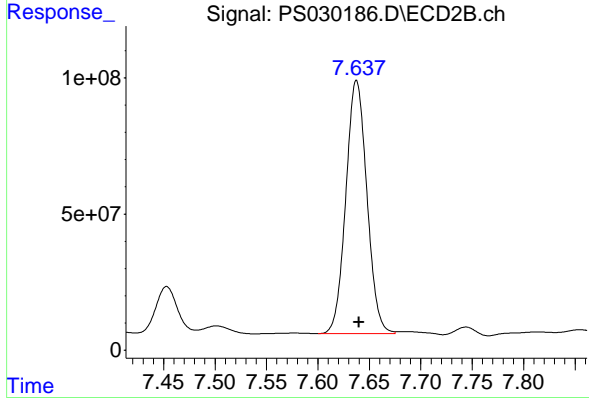
#5 DICAMBA

R.T.: 7.109 min
 Delta R.T.: 0.000 min
 Response: 3307855605
 Conc: 286.21 ng/ml

Instrument : ECD_S
 ClientSampleId : OR-636-COMP-11MSD

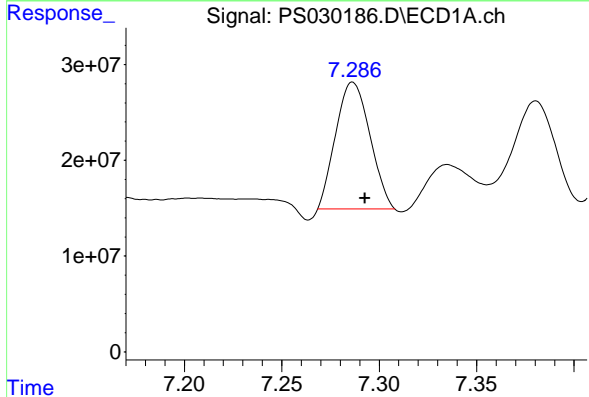
Manual Integrations
 APPROVED

Reviewed By :Abdul Mirza 05/15/2025
 Supervised By :mohammad ahmed 05/20/2025



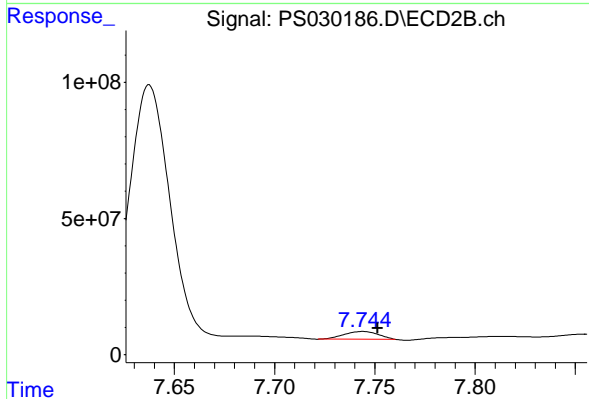
#5 DICAMBA

R.T.: 7.637 min
 Delta R.T.: -0.003 min
 Response: 1324457951
 Conc: 280.13 ng/ml m



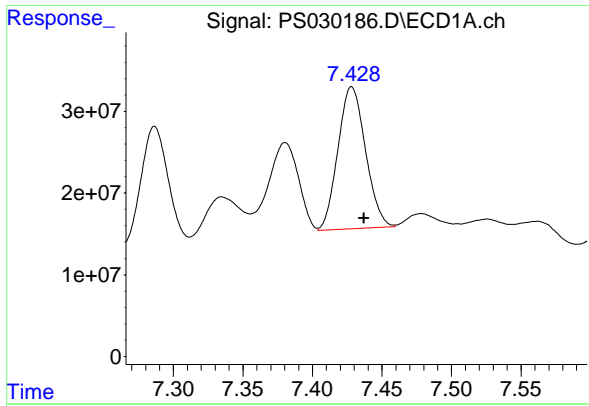
#6 MCPP

R.T.: 7.286 min
 Delta R.T.: -0.007 min
 Response: 161775397
 Conc: 22.21 ug/ml m



#6 MCPP

R.T.: 7.744 min
 Delta R.T.: -0.008 min
 Response: 33787313
 Conc: 18.37 ug/ml m



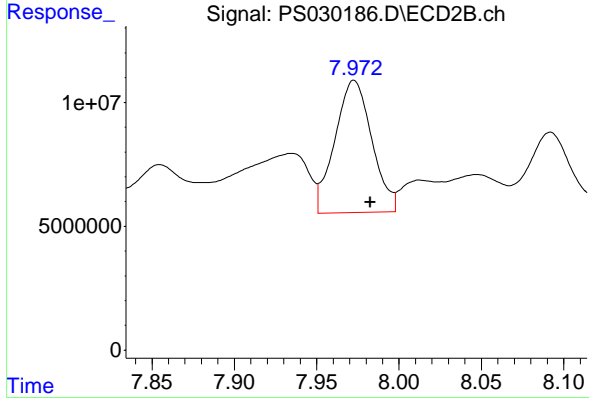
#7 MCPA

R.T.: 7.428 min
 Delta R.T.: -0.009 min
 Response: 240097249
 Conc: 23.13 ug/ml

Instrument :
 ECD_S
 ClientSampleId :
 OR-636-COMP-11MSD

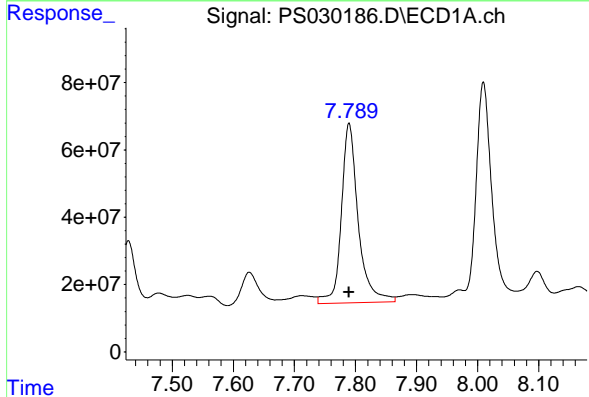
Manual Integrations
 APPROVED

Reviewed By :Abdul Mirza 05/15/2025
 Supervised By :mohammad ahmed 05/20/2025



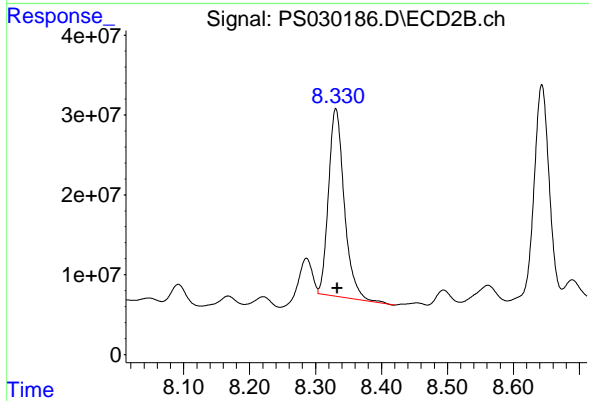
#7 MCPA

R.T.: 7.973 min
 Delta R.T.: -0.010 min
 Response: 83346826
 Conc: 31.60 ug/ml



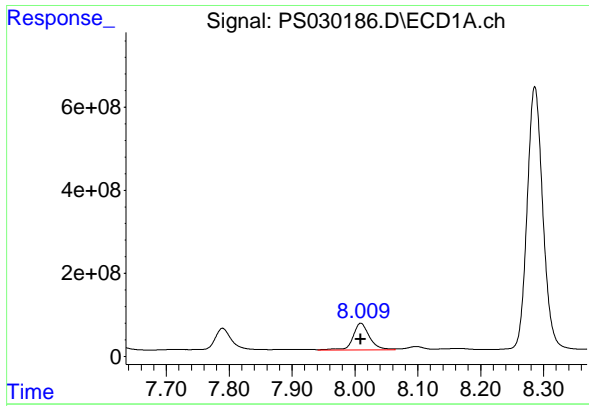
#8 DICHLORPROP

R.T.: 7.790 min
 Delta R.T.: 0.000 min
 Response: 1025500858
 Conc: 351.04 ng/ml



#8 DICHLORPROP

R.T.: 8.331 min
 Delta R.T.: -0.002 min
 Response: 389001183
 Conc: 329.26 ng/ml



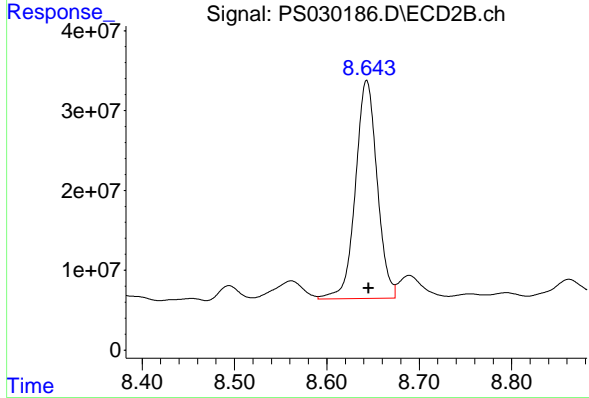
#9 2,4-D

R.T.: 8.009 min
 Delta R.T.: 0.000 min
 Response: 1192876338
 Conc: 363.80 ng/ml

Instrument : ECD_S
 Client Sample Id : OR-636-COMP-11MSD

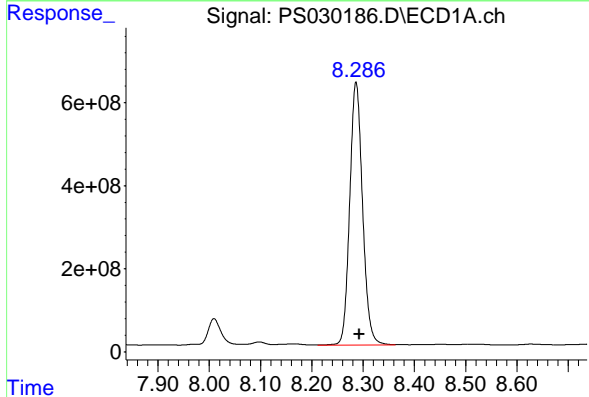
Manual Integrations
 APPROVED

Reviewed By :Abdul Mirza 05/15/2025
 Supervised By :mohammad ahmed 05/20/2025



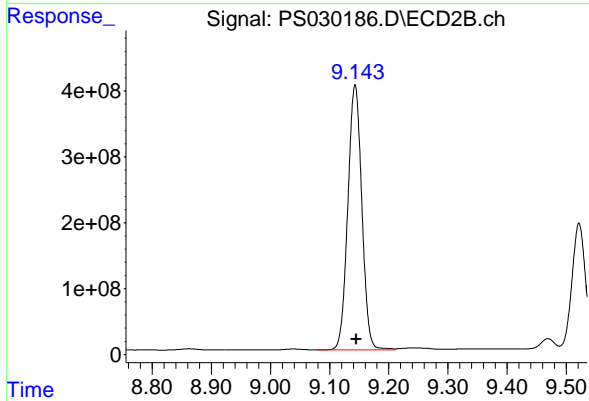
#9 2,4-D

R.T.: 8.643 min
 Delta R.T.: -0.002 min
 Response: 445811059
 Conc: 345.46 ng/ml



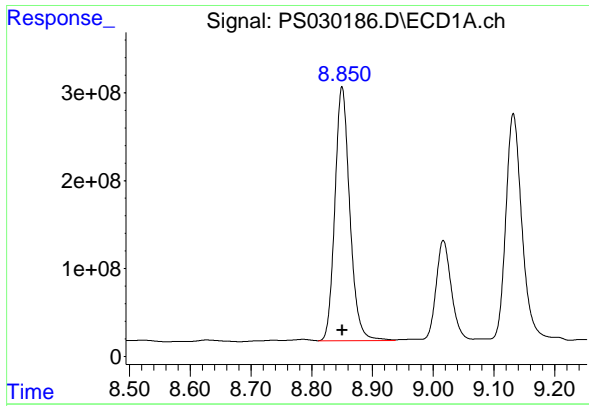
#10 Pentachlorophenol

R.T.: 8.286 min
 Delta R.T.: -0.007 min
 Response: 10963725338
 Conc: 270.70 ng/ml



#10 Pentachlorophenol

R.T.: 9.143 min
 Delta R.T.: -0.002 min
 Response: 6610259421
 Conc: 267.78 ng/ml



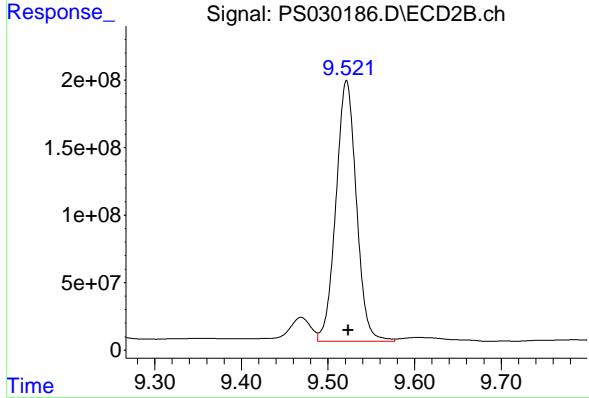
#11 2,4,5-TP (SILVEX)

R.T.: 8.850 min
 Delta R.T.: 0.000 min
 Response: 4926891212
 Conc: 304.20 ng/ml

Instrument :
 ECD_S
 ClientSampleId :
 OR-636-COMP-11MSD

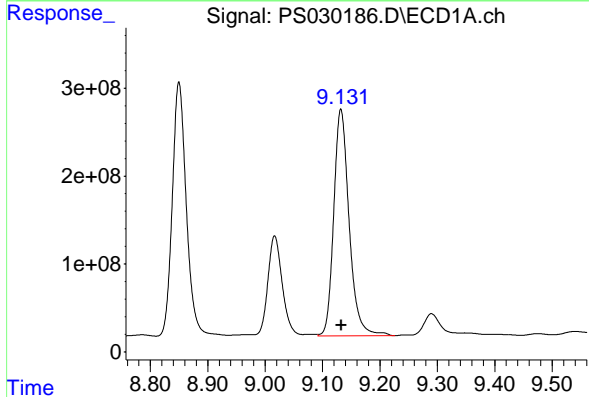
Manual Integrations
 APPROVED

Reviewed By :Abdul Mirza 05/15/2025
 Supervised By :mohammad ahmed 05/20/2025



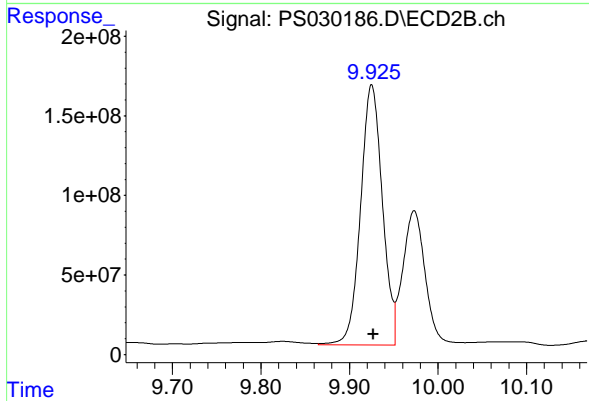
#11 2,4,5-TP (SILVEX)

R.T.: 9.521 min
 Delta R.T.: -0.002 min
 Response: 3164163547
 Conc: 321.22 ng/ml



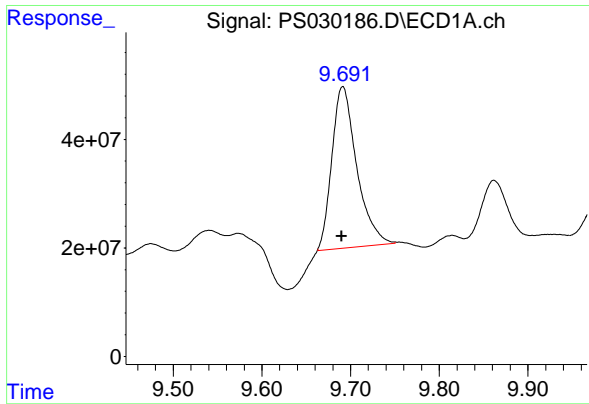
#12 2,4,5-T

R.T.: 9.132 min
 Delta R.T.: 0.000 min
 Response: 4795566135
 Conc: 290.37 ng/ml



#12 2,4,5-T

R.T.: 9.925 min
 Delta R.T.: -0.002 min
 Response: 2798158397
 Conc: 304.03 ng/ml



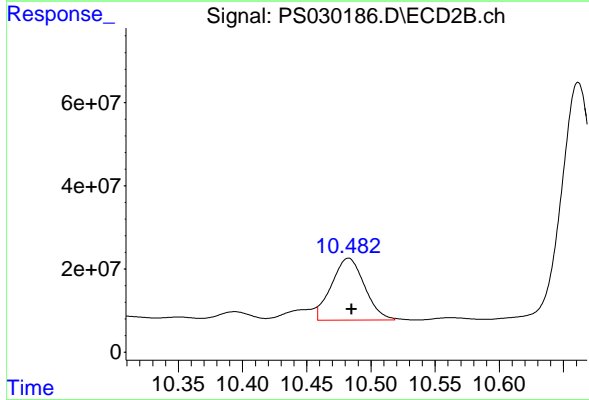
#13 2,4-DB

R.T.: 9.691 min
 Delta R.T.: 0.000 min
 Response: 579347221
 Conc: 221.99 ng/ml

Instrument : ECD_S
 ClientSampleId : OR-636-COMP-11MSD

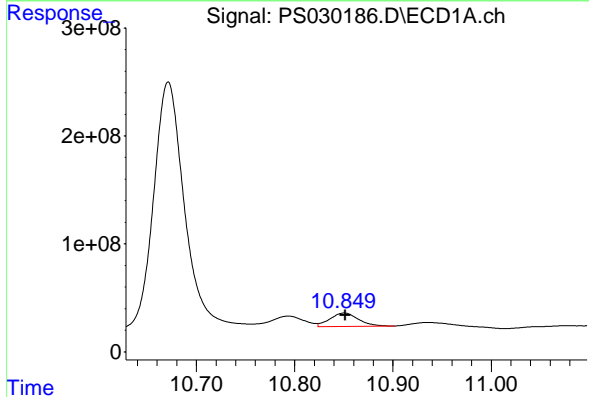
Manual Integrations
 APPROVED

Reviewed By :Abdul Mirza 05/15/2025
 Supervised By :mohammad ahmed 05/20/2025



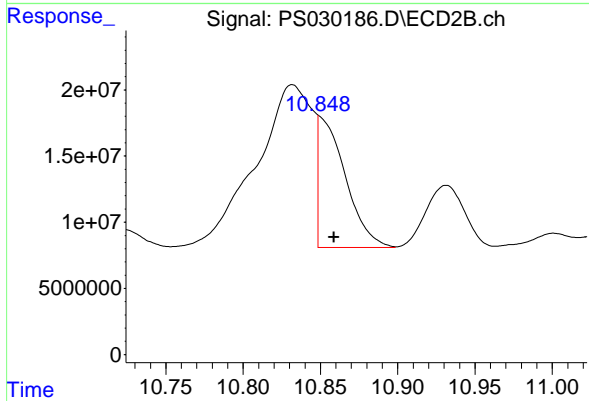
#13 2,4-DB

R.T.: 10.482 min
 Delta R.T.: -0.003 min
 Response: 266095905
 Conc: 268.14 ng/ml m



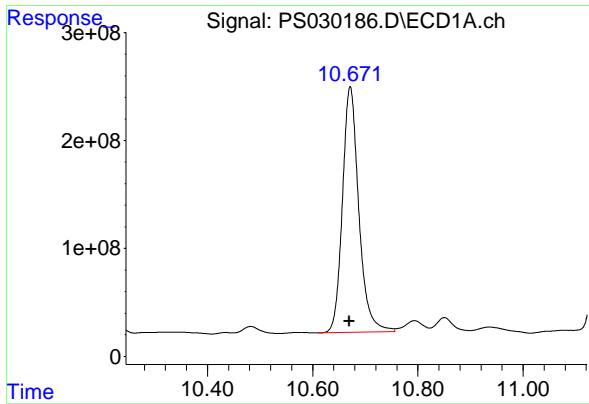
#14 DINOSEB

R.T.: 10.851 min
 Delta R.T.: -0.001 min
 Response: 247847497
 Conc: 21.67 ng/ml



#14 DINOSEB

R.T.: 10.848 min
 Delta R.T.: -0.010 min
 Response: 119327583
 Conc: 17.47 ng/ml m



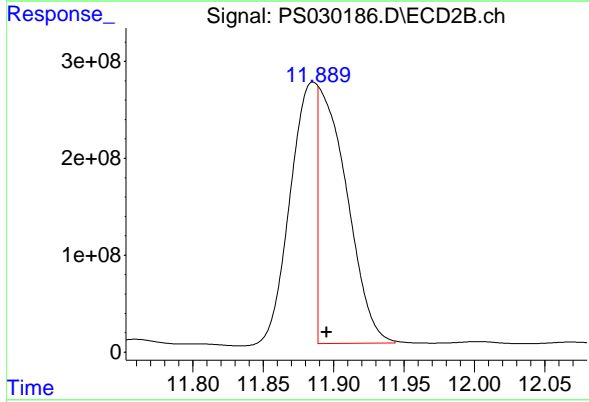
#15 Picloram

R.T.: 10.671 min
 Delta R.T.: 0.001 min
 Response: 4925508545
 Conc: 230.30 ng/ml

Instrument :
 ECD_S
 Client Sample Id :
 OR-636-COMP-11MSD

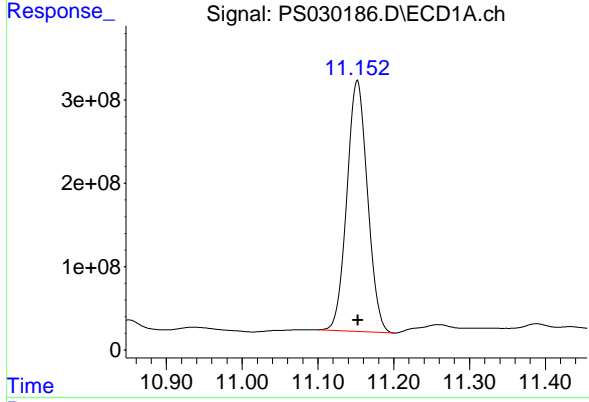
Manual Integrations
 APPROVED

Reviewed By :Abdul Mirza 05/15/2025
 Supervised By :mohammad ahmed 05/20/2025



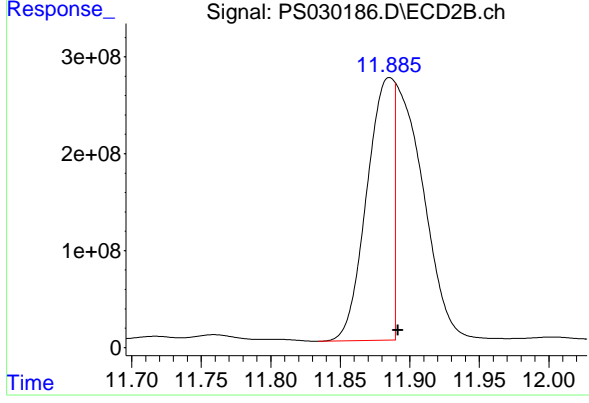
#15 Picloram

R.T.: 11.889 min
 Delta R.T.: -0.006 min
 Response: 3729552053
 Conc: 265.01 ng/ml m



#16 DCPA

R.T.: 11.152 min
 Delta R.T.: 0.000 min
 Response: 5708019741
 Conc: 286.67 ng/ml



#16 DCPA

R.T.: 11.885 min
 Delta R.T.: -0.007 min
 Response: 3671360577
 Conc: 271.74 ng/ml m