

Data Path : Z:\pestpcbsrv\HPCHEM1\ECD_S\Data\PS051920\
 Data File : PS010346.D
 Signal(s) : Signal #1: ECD1A.ch Signal #2: ECD2B.ch
 Acq On : 19 May 2020 12:22
 Operator : DD\AJ
 Sample : PB128959BS
 Misc :
 ALS Vial : 5 Sample Multiplier: 1

Instrument :
 ECD_S
 ClientSampleId :

Integration File signal 1: autoint1.e
 Integration File signal 2: autoint2.e
 Quant Time: May 19 17:31:59 2020
 Quant Method : Z:\pestpcbsrv\HPCHEM1\ECD_S\Method\PS051120.M
 Quant Title : 8080.M
 QLast Update : Mon May 11 17:06:53 2020
 Response via : Initial Calibration
 Integrator: ChemStation

Volume Inj. : 2 µl
 Signal #1 Phase : Rtx-CLPesticides Signal #2 Phase: Rtx-CLPesticides2
 Signal #1 Info : 30M x 0.32mm x0.5 Signal #2 Info : 30M x 0.32mm x 0.25µm

	Compound	RT#1	RT#2	Resp#1	Resp#2	ng/ml	ng/ml

System Monitoring Compounds							
4) S	2,4-DCAA	7.233	6.920	357.2E6	282.8E6	507.994	527.300
Target Compounds							
1) T	Dalapon	3.044	2.630	395.0E6	341.1E6	443.170	421.034
2) T	3,5-DICHL...	6.444	6.070	465.1E6	356.8E6	482.114	438.166
3) T	4-Nitroph...	7.063	6.525	151.9E6	139.5E6	459.281	419.725
5) T	DICAMBA	7.425	7.090	1286.8E6	996.2E6	471.718	454.951
6) T	MCP P	7.593	7.185	113.8E6	85989892	52.002	46.845
7) T	MCPA	7.742	7.399	142.0E6	135.8E6	45.588	49.928
8) T	DICHLORPROP	8.119	7.716	328.3E6	268.3E6	491.716	475.256
9) T	2,4-D	8.347	8.010	388.5E6	356.9E6	549.927	514.655
10) T	Pentachlo...	8.660	8.442	4810.9E6	3422.7E6	529.081	505.171
11) T	2,4,5-TP ...	9.210	8.802	1937.6E6	1579.1E6	525.731	545.123
12) T	2,4,5-T	9.496	9.181	1715.0E6	1417.5E6	487.374	487.540
13) T	2,4-DB	10.048	9.687	205.2E6	181.6E6	407.941	455.574
14) T	DINOSEB	11.211	10.022	1431.0E6	1035.9E6	522.250	486.124
15) T	Picloram	11.027	11.001	1688.7E6	1451.5E6	368.335	343.794
16) T	DCPA	11.476	10.951	2202.5E6	1851.2E6	486.912	517.843

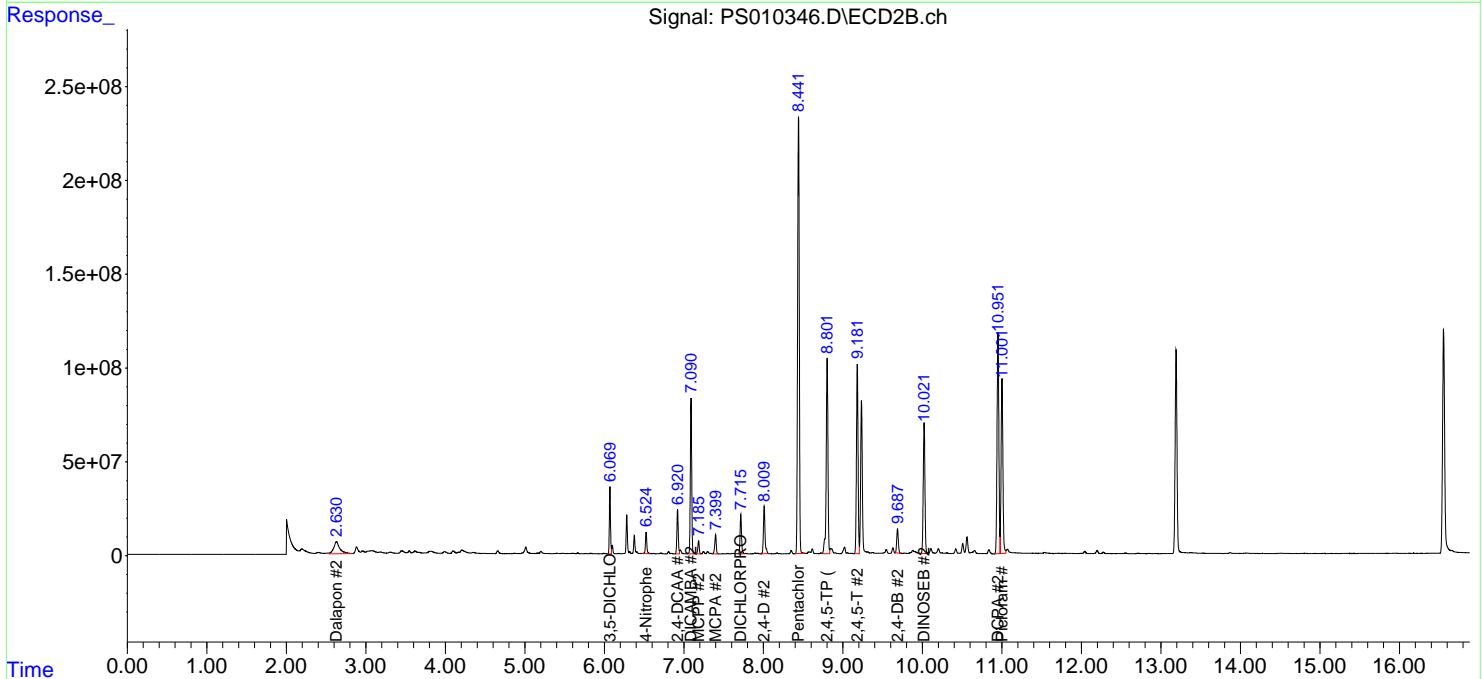
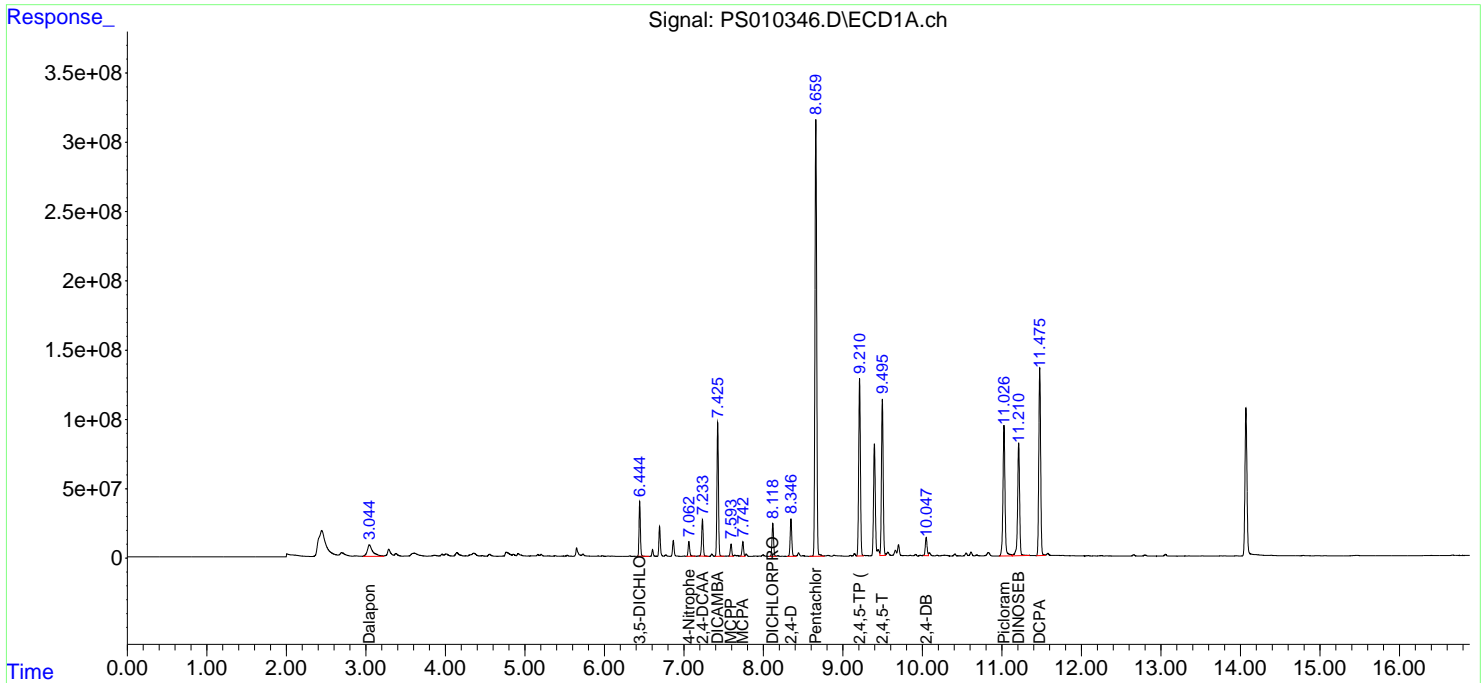
(f)=RT Delta > 1/2 Window (#)=Amounts differ by > 25% (m)=manual int.

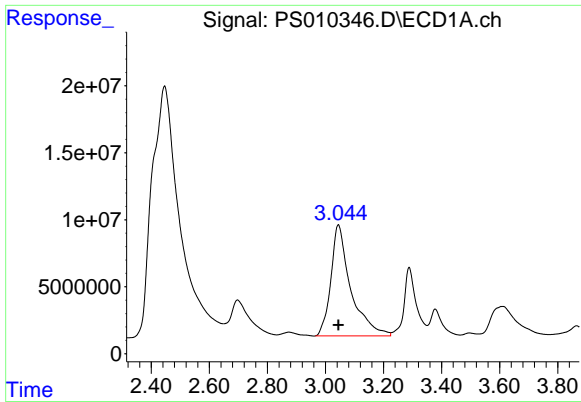
Data Path : Z:\pestpcbsrv\HPCHEM1\ECD_S\Data\PS051920\
 Data File : PS010346.D
 Signal(s) : Signal #1: ECD1A.ch Signal #2: ECD2B.ch
 Acq On : 19 May 2020 12:22
 Operator : DD\AJ
 Sample : PB128959BS
 Misc :
 ALS Vial : 5 Sample Multiplier: 1

Instrument :
 ECD_S
 ClientSampled :

Integration File signal 1: autoint1.e
 Integration File signal 2: autoint2.e
 Quant Time: May 19 17:31:59 2020
 Quant Method : Z:\pestpcbsrv\HPCHEM1\ECD_S\Method\PS051120.M
 Quant Title : 8080.M
 QLast Update : Mon May 11 17:06:53 2020
 Response via : Initial Calibration
 Integrator: ChemStation

Volume Inj. : 2 µl
 Signal #1 Phase : Rtx-CLPesticides Signal #2 Phase: Rtx-CLPesticides2
 Signal #1 Info : 30M x 0.32mm x0.5 Signal #2 Info : 30M x 0.32mm x 0.25µm

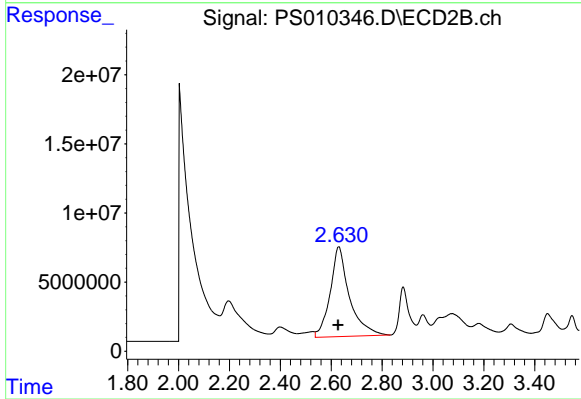




#1 Dalapon

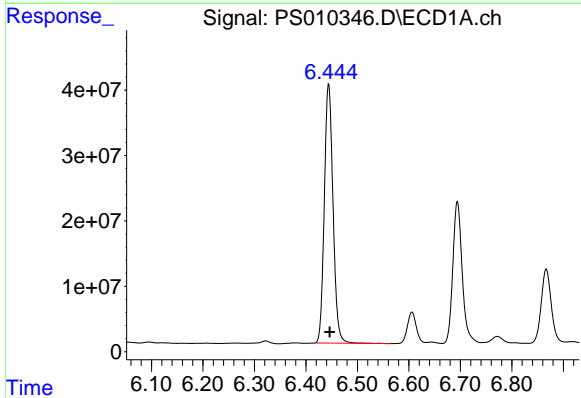
R.T.: 3.044 min
 Delta R.T.: 0.000 min
 Response: 395048997
 Conc: 443.17 ng/ml

Instrument :
 ECD_S
 ClientSampleId :



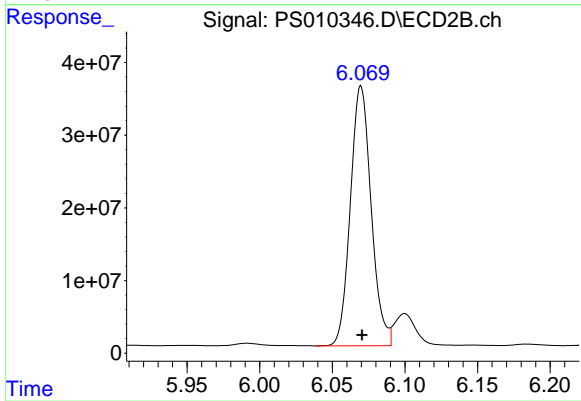
#1 Dalapon

R.T.: 2.630 min
 Delta R.T.: 0.003 min
 Response: 341099555
 Conc: 421.03 ng/ml



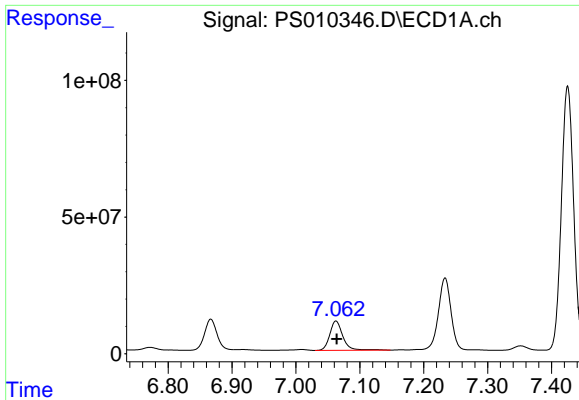
#2 3,5-DICHLOROBENZOIC ACID

R.T.: 6.444 min
 Delta R.T.: -0.002 min
 Response: 465116239
 Conc: 482.11 ng/ml



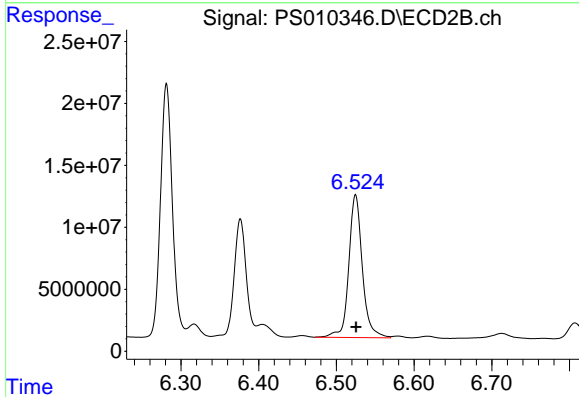
#2 3,5-DICHLOROBENZOIC ACID

R.T.: 6.070 min
 Delta R.T.: 0.000 min
 Response: 356830087
 Conc: 438.17 ng/ml

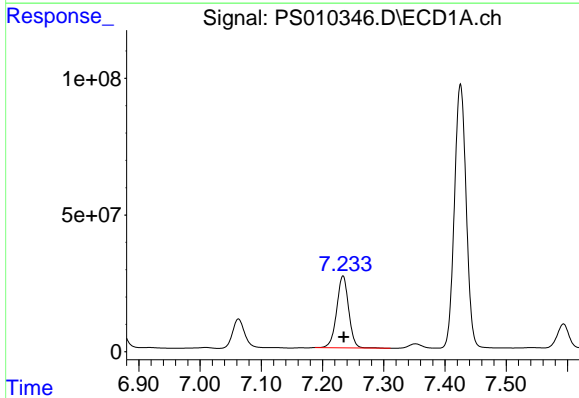


#3 4-Nitrophenol
R.T.: 7.063 min
Delta R.T.: -0.001 min
Response: 151936759
Conc: 459.28 ng/ml

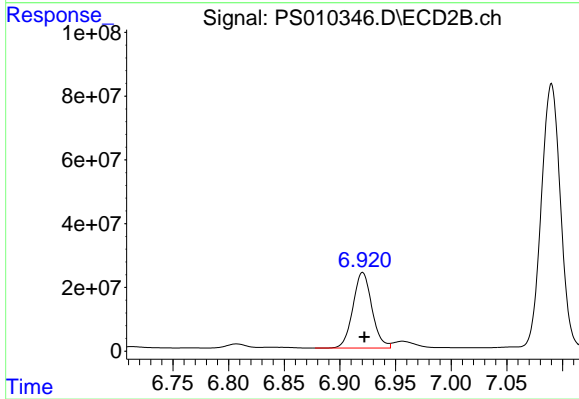
Instrument :
ECD_S
ClientSampled :



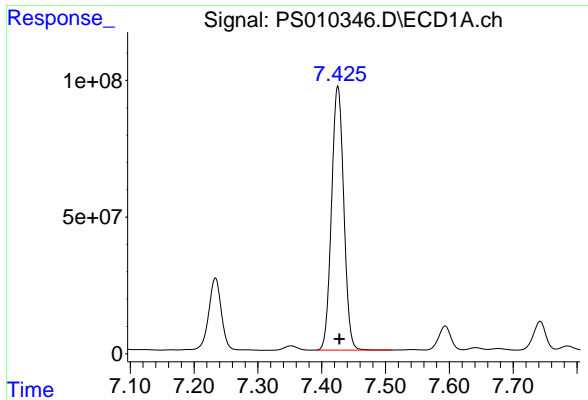
#3 4-Nitrophenol
R.T.: 6.525 min
Delta R.T.: 0.000 min
Response: 139460221
Conc: 419.72 ng/ml



#4 2,4-DCAA
R.T.: 7.233 min
Delta R.T.: -0.001 min
Response: 357168023
Conc: 507.99 ng/ml

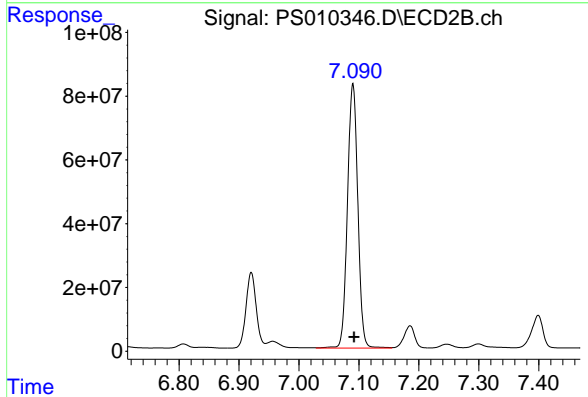


#4 2,4-DCAA
R.T.: 6.920 min
Delta R.T.: -0.001 min
Response: 282786245
Conc: 527.30 ng/ml

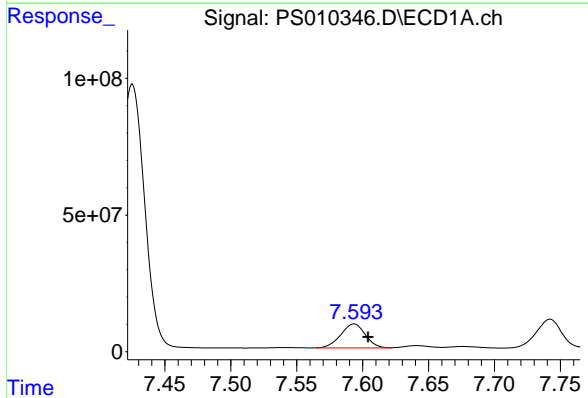


#5 DICAMBA
 R.T.: 7.425 min
 Delta R.T.: -0.002 min
 Response: 1286786352
 Conc: 471.72 ng/ml

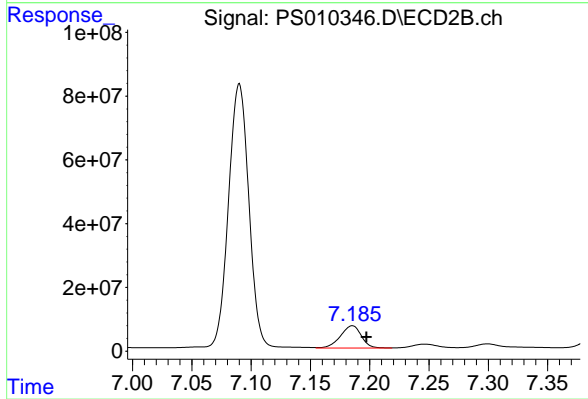
Instrument :
 ECD_S
 ClientSampleId :



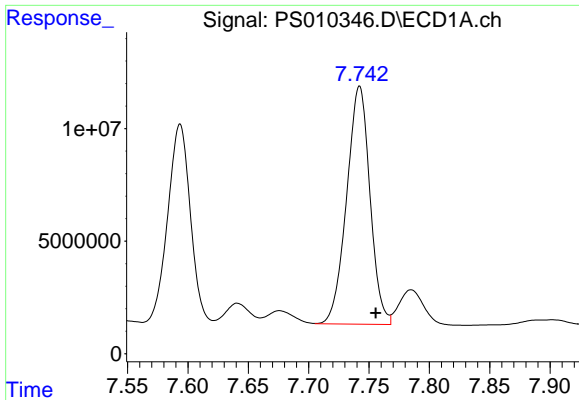
#5 DICAMBA
 R.T.: 7.090 min
 Delta R.T.: -0.002 min
 Response: 996160138
 Conc: 454.95 ng/ml



#6 MCP
 R.T.: 7.593 min
 Delta R.T.: -0.011 min
 Response: 113834135
 Conc: 52.00 ug/ml



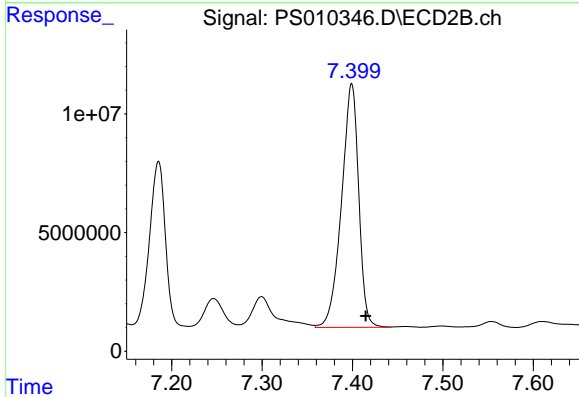
#6 MCP
 R.T.: 7.185 min
 Delta R.T.: -0.012 min
 Response: 85989892
 Conc: 46.85 ug/ml



#7 MCPA

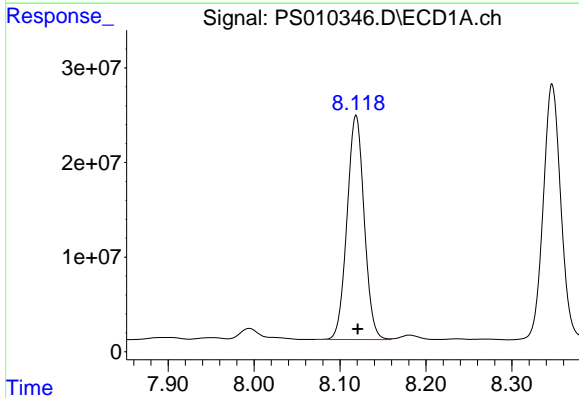
R.T.: 7.742 min
 Delta R.T.: -0.014 min
 Response: 142028721
 Conc: 45.59 ug/ml

Instrument :
 ECD_S
 ClientSampleId :



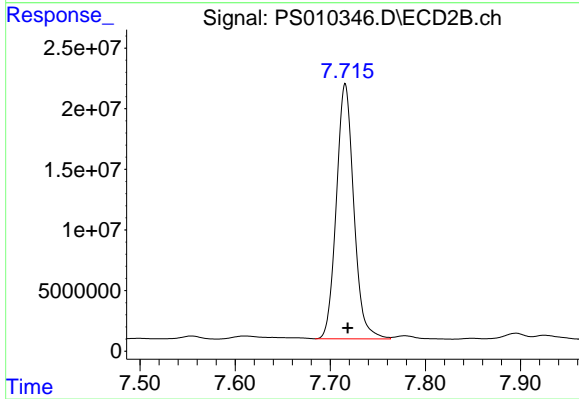
#7 MCPA

R.T.: 7.399 min
 Delta R.T.: -0.016 min
 Response: 135821302
 Conc: 49.93 ug/ml



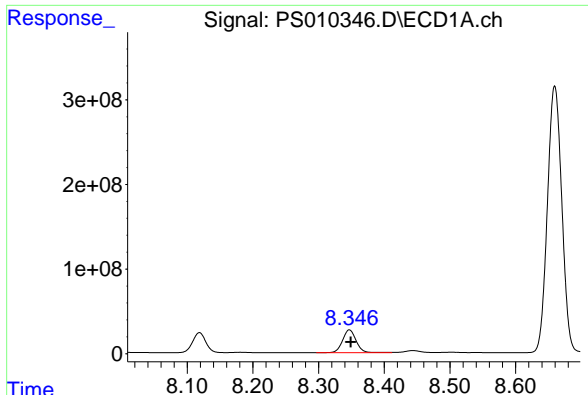
#8 DICHLORPROP

R.T.: 8.119 min
 Delta R.T.: -0.002 min
 Response: 328285527
 Conc: 491.72 ng/ml



#8 DICHLORPROP

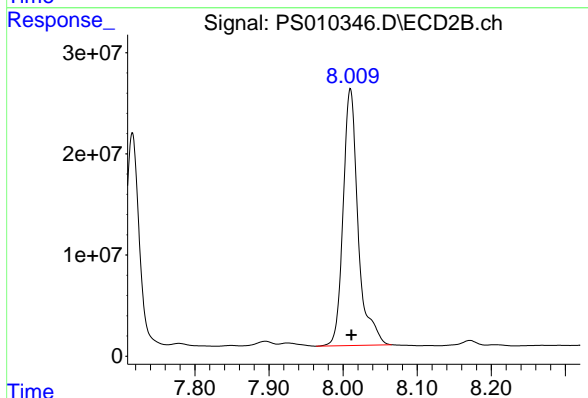
R.T.: 7.716 min
 Delta R.T.: -0.002 min
 Response: 268315740
 Conc: 475.26 ng/ml



#9 2,4-D

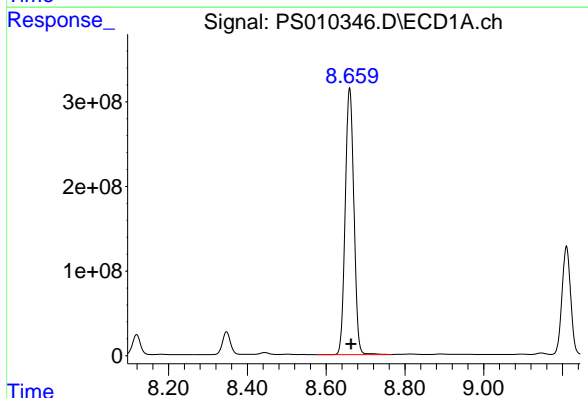
R.T.: 8.347 min
Delta R.T.: -0.002 min
Response: 388498071
Conc: 549.93 ng/ml

Instrument :
ECD_S
ClientSampled :



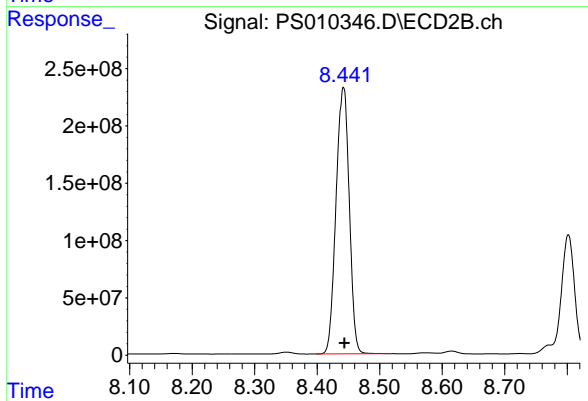
#9 2,4-D

R.T.: 8.010 min
Delta R.T.: -0.001 min
Response: 356863022
Conc: 514.66 ng/ml



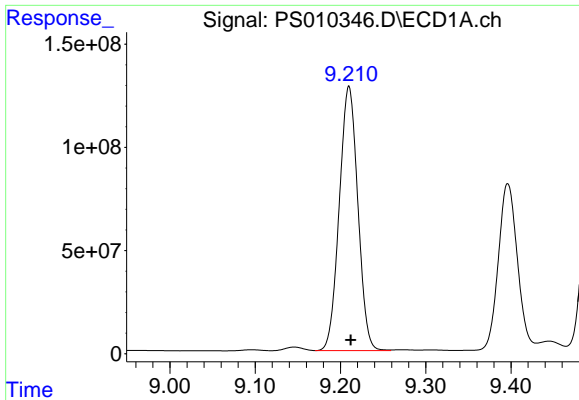
#10 Pentachlorophenol

R.T.: 8.660 min
Delta R.T.: -0.003 min
Response: 4810894812
Conc: 529.08 ng/ml



#10 Pentachlorophenol

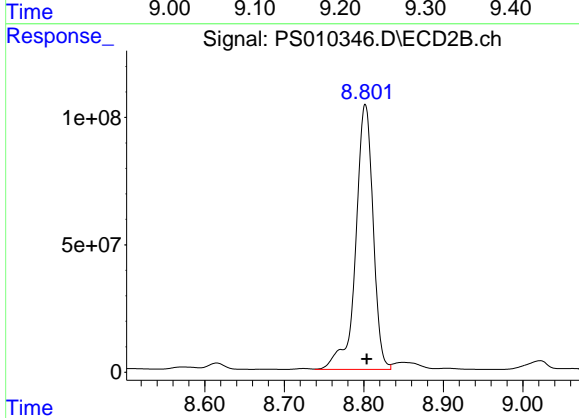
R.T.: 8.442 min
Delta R.T.: -0.002 min
Response: 3422713294
Conc: 505.17 ng/ml



#11 2,4,5-TP (SILVEX)

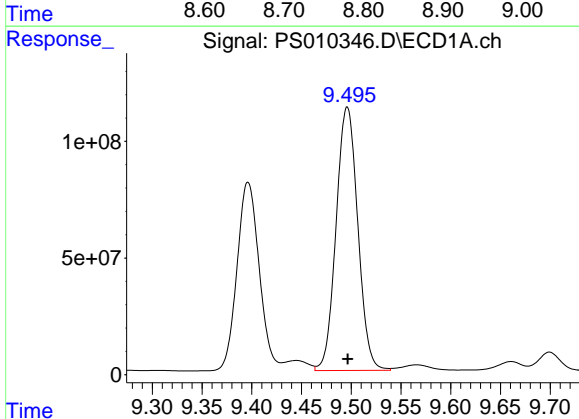
R.T.: 9.210 min
 Delta R.T.: -0.002 min
 Response: 1937580871
 Conc: 525.73 ng/ml

Instrument :
 ECD_S
 ClientSampled :



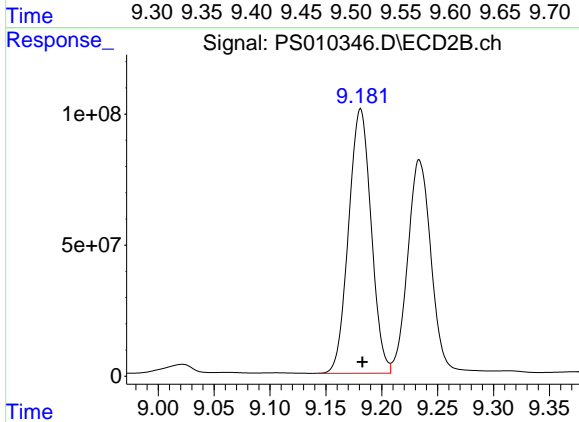
#11 2,4,5-TP (SILVEX)

R.T.: 8.802 min
 Delta R.T.: -0.002 min
 Response: 1579138903
 Conc: 545.12 ng/ml



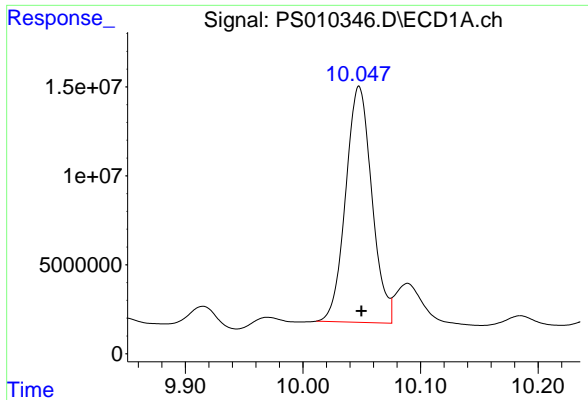
#12 2,4,5-T

R.T.: 9.496 min
 Delta R.T.: 0.000 min
 Response: 1714981645
 Conc: 487.37 ng/ml



#12 2,4,5-T

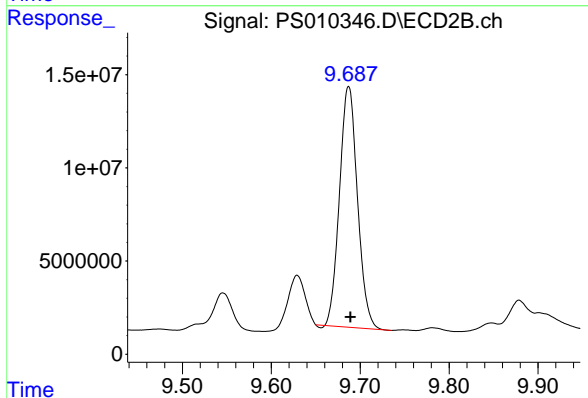
R.T.: 9.181 min
 Delta R.T.: -0.002 min
 Response: 1417544976
 Conc: 487.54 ng/ml



#13 2,4-DB

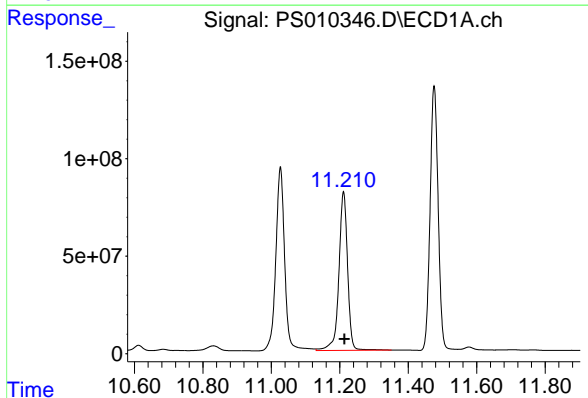
R.T.: 10.048 min
 Delta R.T.: -0.002 min
 Response: 205211835
 Conc: 407.94 ng/ml

Instrument :
 ECD_S
 ClientSampleId :



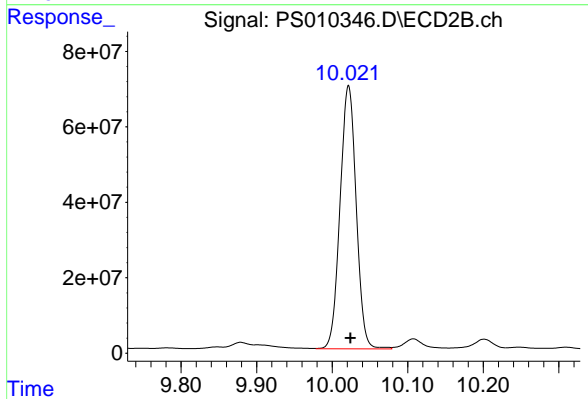
#13 2,4-DB

R.T.: 9.687 min
 Delta R.T.: -0.002 min
 Response: 181566679
 Conc: 455.57 ng/ml



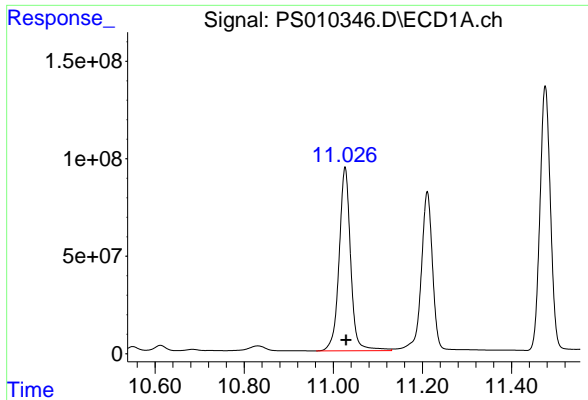
#14 DINOSEB

R.T.: 11.211 min
 Delta R.T.: -0.003 min
 Response: 1430967024
 Conc: 522.25 ng/ml



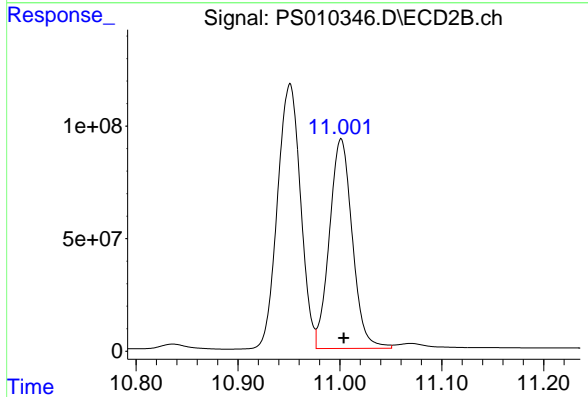
#14 DINOSEB

R.T.: 10.022 min
 Delta R.T.: -0.002 min
 Response: 1035901858
 Conc: 486.12 ng/ml

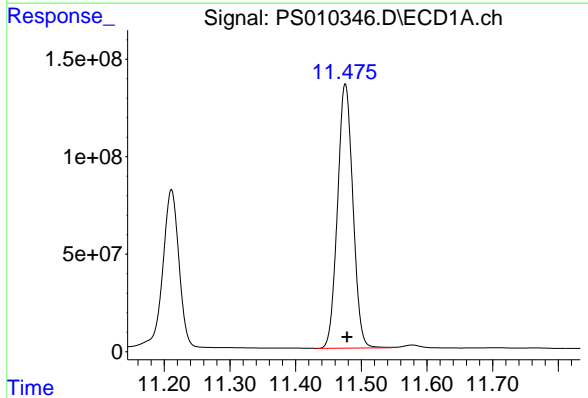


#15 Picloram
 R.T.: 11.027 min
 Delta R.T.: -0.003 min
 Response: 1688734272
 Conc: 368.34 ng/ml

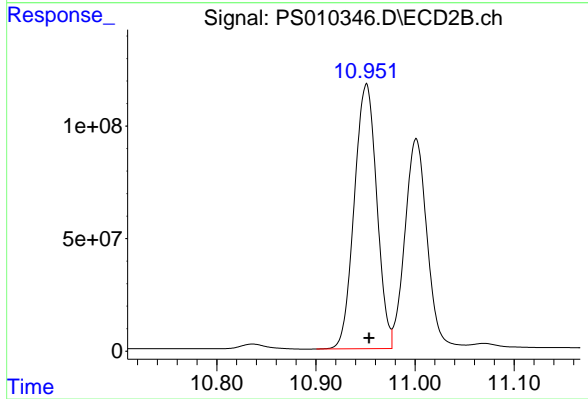
Instrument :
 ECD_S
 ClientSampleId :



#15 Picloram
 R.T.: 11.001 min
 Delta R.T.: -0.003 min
 Response: 1451460682
 Conc: 343.79 ng/ml



#16 DCPA
 R.T.: 11.476 min
 Delta R.T.: -0.003 min
 Response: 2202540398
 Conc: 486.91 ng/ml



#16 DCPA
 R.T.: 10.951 min
 Delta R.T.: -0.003 min
 Response: 1851194966
 Conc: 517.84 ng/ml