

Data Path : Z:\pestpcbsrv\HPCHEM1\ECD_S\Data\PS051920\
 Data File : PS010360.D
 Signal(s) : Signal #1: ECD1A.ch Signal #2: ECD2B.ch
 Acq On : 19 May 2020 17:43
 Operator : DD\AJ
 Sample : L2638-05MS
 Misc :
 ALS Vial : 17 Sample Multiplier: 1

Instrument :
 ECD_S
 ClientSampleId :

Integration File signal 1: autoint1.e
 Integration File signal 2: autoint2.e
 Quant Time: May 20 06:16:55 2020
 Quant Method : Z:\pestpcbsrv\HPCHEM1\ECD_S\Method\PS051120.M
 Quant Title : 8080.M
 QLast Update : Mon May 11 17:06:53 2020
 Response via : Initial Calibration
 Integrator: ChemStation

Volume Inj. : 2 µl
 Signal #1 Phase : Rtx-CLPesticides Signal #2 Phase: Rtx-CLPesticides2
 Signal #1 Info : 30M x 0.32mm x0.5 Signal #2 Info : 30M x 0.32mm x 0.25µm

	Compound	RT#1	RT#2	Resp#1	Resp#2	ng/ml	ng/ml

System Monitoring Compounds							
4) S	2,4-DCAA	7.232	6.920	173.5E6	124.0E6	246.781	231.165
Target Compounds							
1) T	Dalapon	3.043	2.586	116.0E6	587.1E6	130.128	724.737 #
2) T	3,5-DICHL...	6.444	6.070	196.2E6	163.8E6	203.385	201.130
3) T	4-Nitroph...	7.061	6.527	19383470	10755712	58.593	32.371 #
5) T	DICAMBA	7.424	7.090	584.4E6	461.1E6	214.231	210.583
6) T	MCPD	7.589	7.182	41605462	33585493	19.006	18.297
7) T	MCPA	7.737	7.394	80213426	81860098	25.747	30.092
8) T	DICHLORPROP	8.117	7.716	127.0E6	125.8E6	190.196	222.755
9) T	2,4-D	8.346	8.010	192.0E6	165.4E6	271.788	238.542
10) T	Pentachlo...	8.659	8.441	1968.4E6	1470.9E6	216.481	217.095
11) T	2,4,5-TP ...	9.208	8.803	780.3E6	674.0E6	211.727	232.682
12) T	2,4,5-T	9.494	9.180	728.7E6	603.5E6	207.099	207.547
13) T	2,4-DB	10.047	9.688	82457821	78974089	163.918	198.156
14) T	DINOSEB	11.209	10.022	158.9E6	109.8E6	58.004	51.536
15) T	Picloram	11.024	11.001	1096.3E6	971.9E6	239.121	230.210
16) T	DCPA	11.475	10.951	1100.7E6	1012.0E6	243.333	283.088

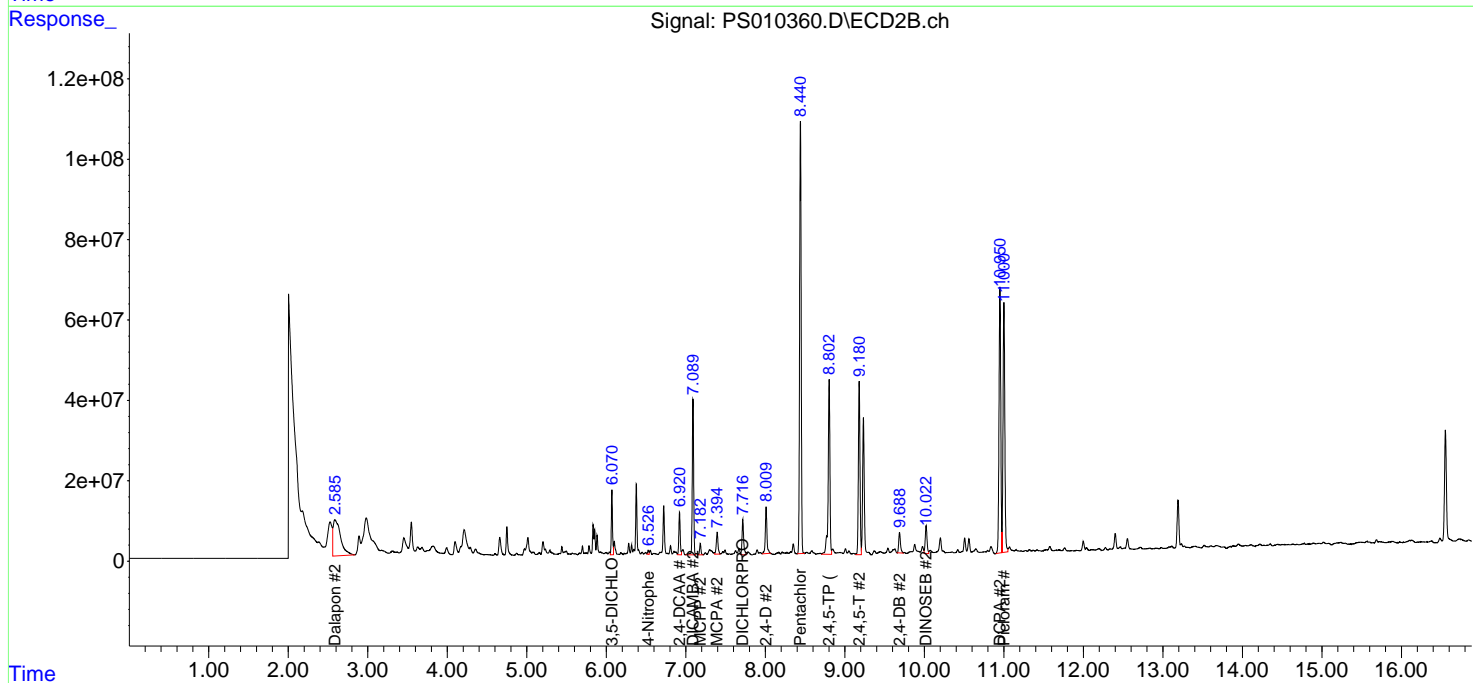
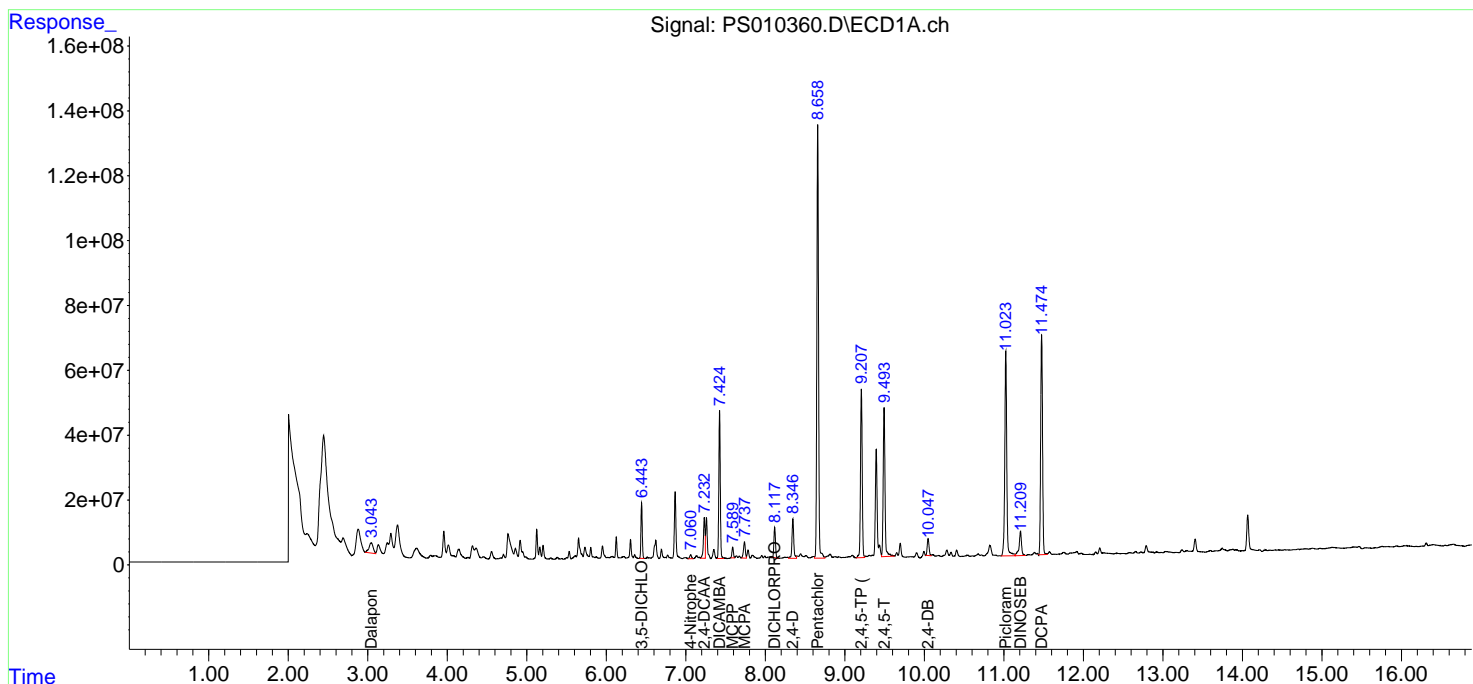
(f)=RT Delta > 1/2 Window (#)=Amounts differ by > 25% (m)=manual int.

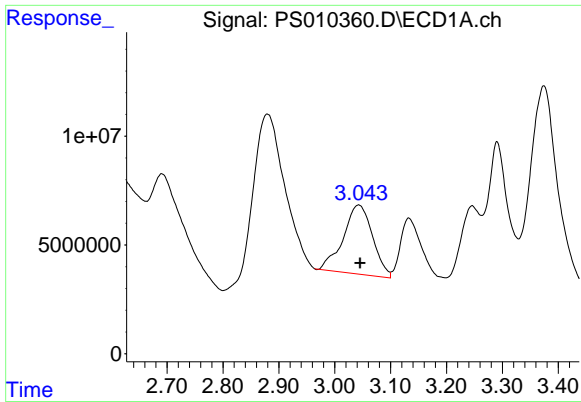
Data Path : Z:\pestpcbsrv\HPCHEM1\ECD_S\Data\PS051920\
 Data File : PS010360.D
 Signal(s) : Signal #1: ECD1A.ch Signal #2: ECD2B.ch
 Acq On : 19 May 2020 17:43
 Operator : DD\AJ
 Sample : L2638-05MS
 Misc :
 ALS Vial : 17 Sample Multiplier: 1

Instrument :
 ECD_S
 ClientSampled :

Integration File signal 1: autoint1.e
 Integration File signal 2: autoint2.e
 Quant Time: May 20 06:16:55 2020
 Quant Method : Z:\pestpcbsrv\HPCHEM1\ECD_S\Method\PS051120.M
 Quant Title : 8080.M
 QLast Update : Mon May 11 17:06:53 2020
 Response via : Initial Calibration
 Integrator: ChemStation

Volume Inj. : 2 µl
 Signal #1 Phase : Rtx-CLPesticides Signal #2 Phase: Rtx-CLPesticides2
 Signal #1 Info : 30M x 0.32mm x0.5 Signal #2 Info : 30M x 0.32mm x 0.25µm

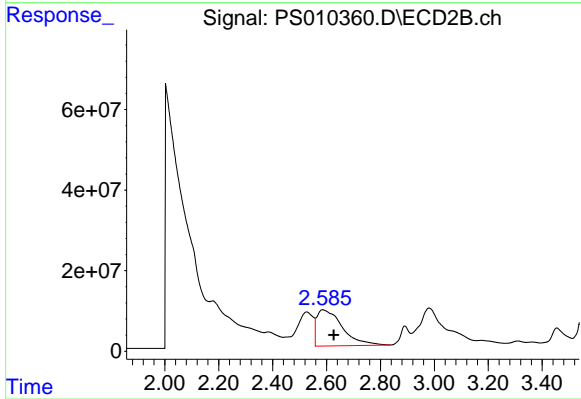




#1 Dalapon

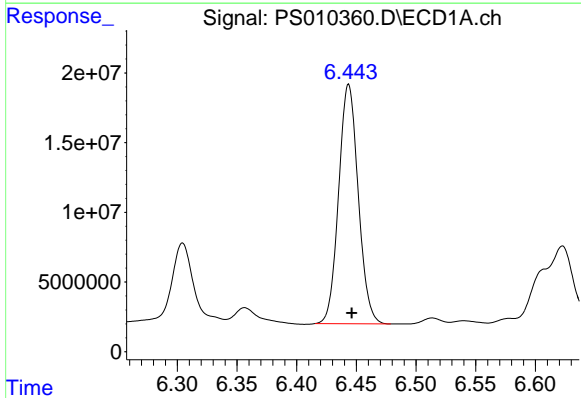
R.T.: 3.043 min
 Delta R.T.: -0.002 min
 Response: 115998401
 Conc: 130.13 ng/ml

Instrument :
 ECD_S
 ClientSampleId :



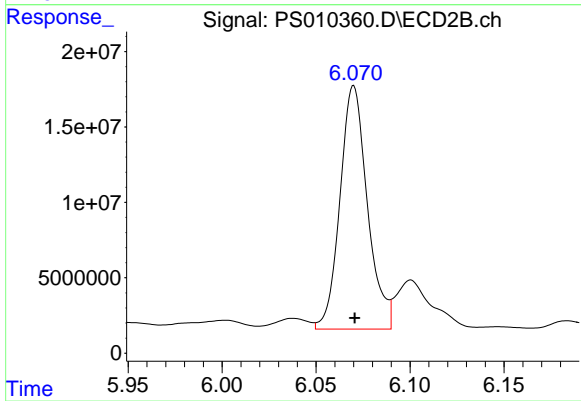
#1 Dalapon

R.T.: 2.586 min
 Delta R.T.: -0.041 min
 Response: 587142839
 Conc: 724.74 ng/ml



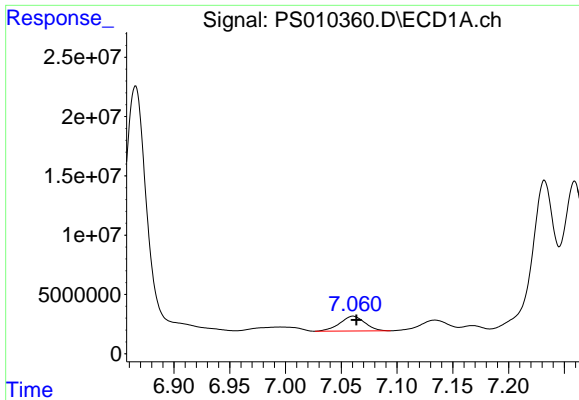
#2 3,5-DICHLOROBENZOIC ACID

R.T.: 6.444 min
 Delta R.T.: -0.003 min
 Response: 196214065
 Conc: 203.38 ng/ml



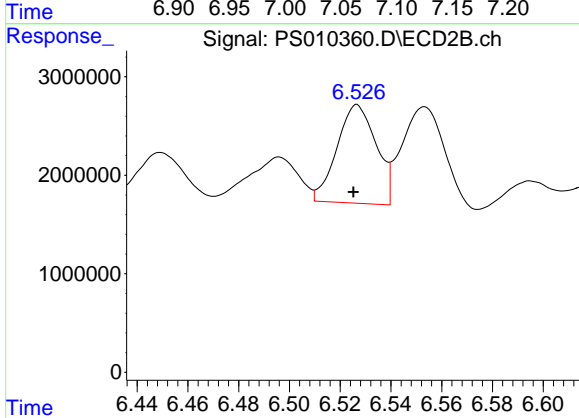
#2 3,5-DICHLOROBENZOIC ACID

R.T.: 6.070 min
 Delta R.T.: 0.000 min
 Response: 163794946
 Conc: 201.13 ng/ml

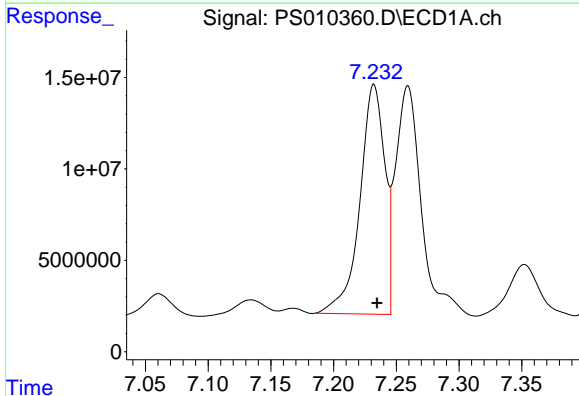


#3 4-Nitrophenol
 R.T.: 7.061 min
 Delta R.T.: -0.003 min
 Response: 19383470
 Conc: 58.59 ng/ml

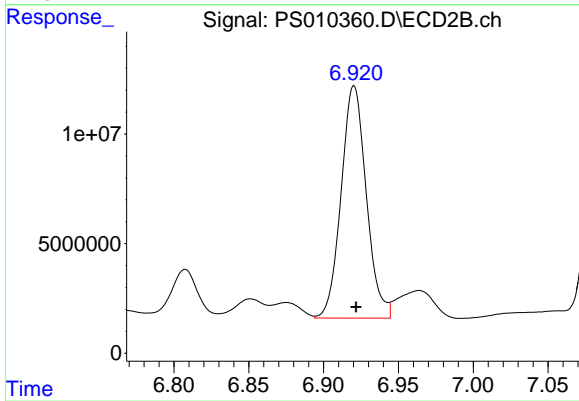
Instrument :
 ECD_S
 ClientSampled :



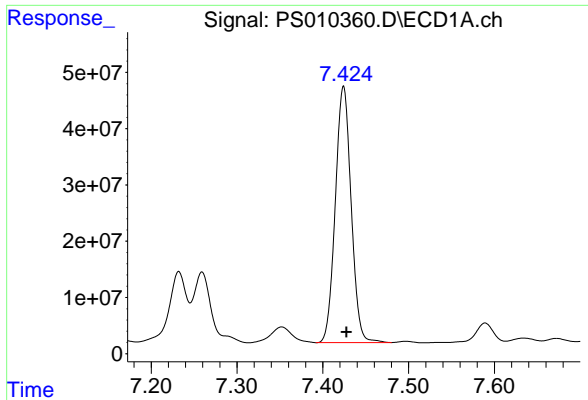
#3 4-Nitrophenol
 R.T.: 6.527 min
 Delta R.T.: 0.002 min
 Response: 10755712
 Conc: 32.37 ng/ml



#4 2,4-DCAA
 R.T.: 7.232 min
 Delta R.T.: -0.002 min
 Response: 173510482
 Conc: 246.78 ng/ml



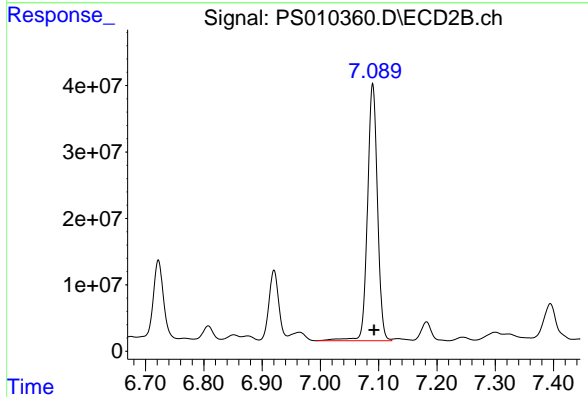
#4 2,4-DCAA
 R.T.: 6.920 min
 Delta R.T.: -0.001 min
 Response: 123971710
 Conc: 231.16 ng/ml



#5 DICAMBA

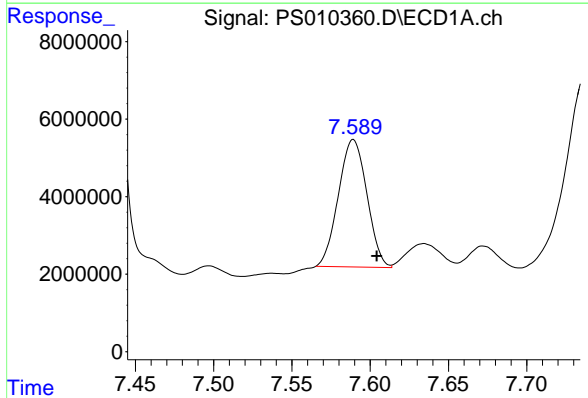
R.T.: 7.424 min
 Delta R.T.: -0.004 min
 Response: 584395658
 Conc: 214.23 ng/ml

Instrument :
 ECD_S
 ClientSampleId :



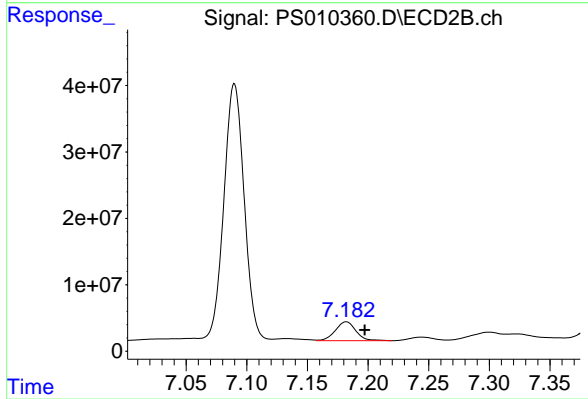
#5 DICAMBA

R.T.: 7.090 min
 Delta R.T.: -0.002 min
 Response: 461092345
 Conc: 210.58 ng/ml



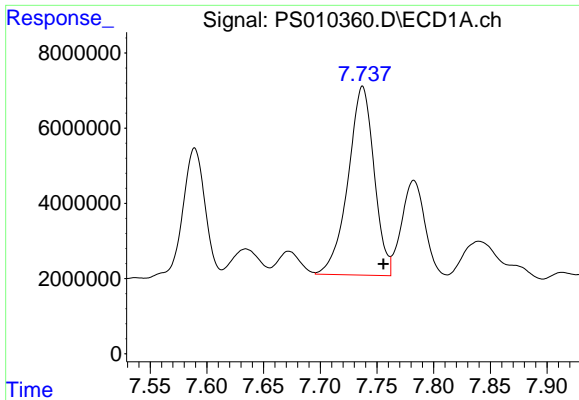
#6 MCPP

R.T.: 7.589 min
 Delta R.T.: -0.015 min
 Response: 41605462
 Conc: 19.01 ug/ml



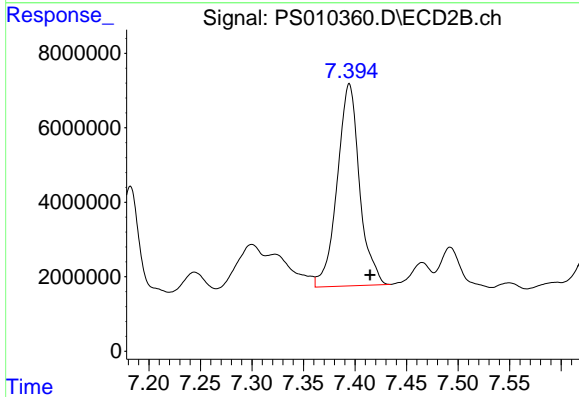
#6 MCPP

R.T.: 7.182 min
 Delta R.T.: -0.015 min
 Response: 33585493
 Conc: 18.30 ug/ml

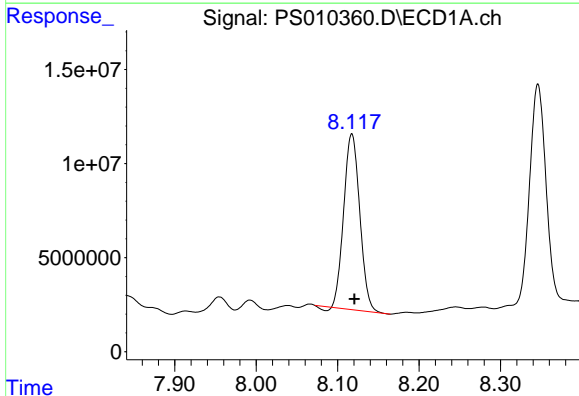


#7 MCPA
R.T.: 7.737 min
Delta R.T.: -0.018 min
Response: 80213426
Conc: 25.75 ug/ml

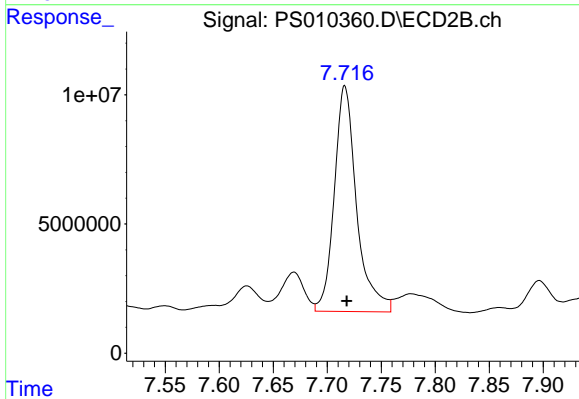
Instrument :
ECD_S
ClientSampled :



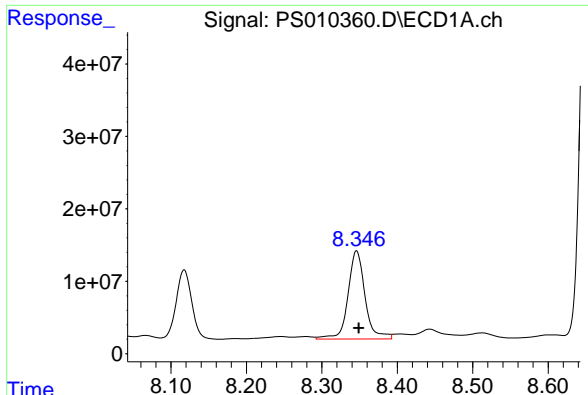
#7 MCPA
R.T.: 7.394 min
Delta R.T.: -0.020 min
Response: 81860098
Conc: 30.09 ug/ml



#8 DICHLORPROP
R.T.: 8.117 min
Delta R.T.: -0.003 min
Response: 126981284
Conc: 190.20 ng/ml



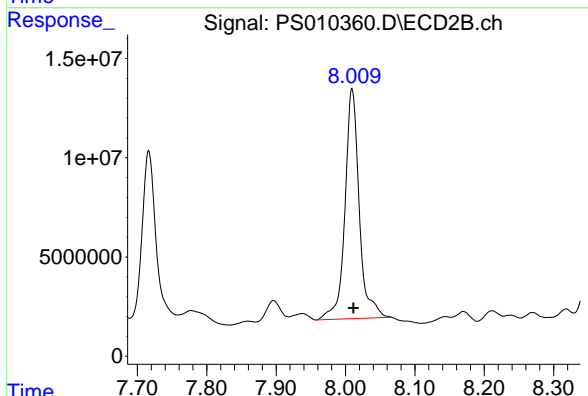
#8 DICHLORPROP
R.T.: 7.716 min
Delta R.T.: -0.002 min
Response: 125760693
Conc: 222.75 ng/ml



#9 2,4-D

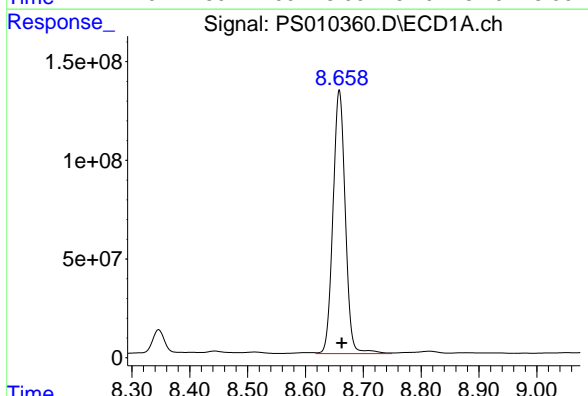
R.T.: 8.346 min
 Delta R.T.: -0.003 min
 Response: 192005767
 Conc: 271.79 ng/ml

Instrument :
 ECD_S
 ClientSampled :



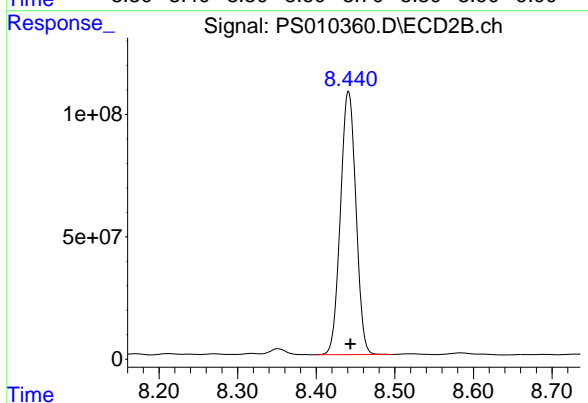
#9 2,4-D

R.T.: 8.010 min
 Delta R.T.: -0.002 min
 Response: 165405882
 Conc: 238.54 ng/ml



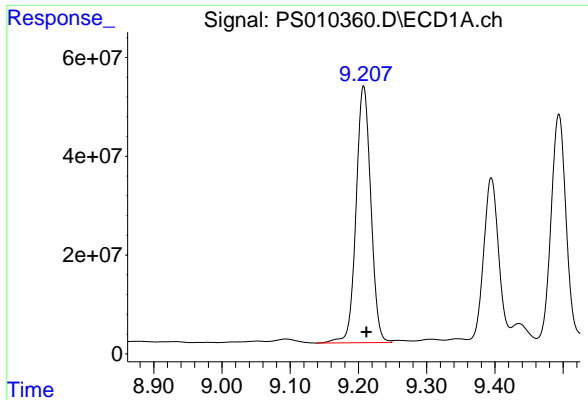
#10 Pentachlorophenol

R.T.: 8.659 min
 Delta R.T.: -0.004 min
 Response: 1968445312
 Conc: 216.48 ng/ml



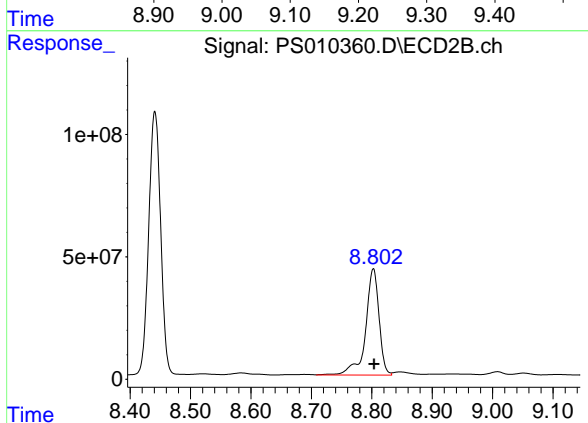
#10 Pentachlorophenol

R.T.: 8.441 min
 Delta R.T.: -0.003 min
 Response: 1470892067
 Conc: 217.09 ng/ml

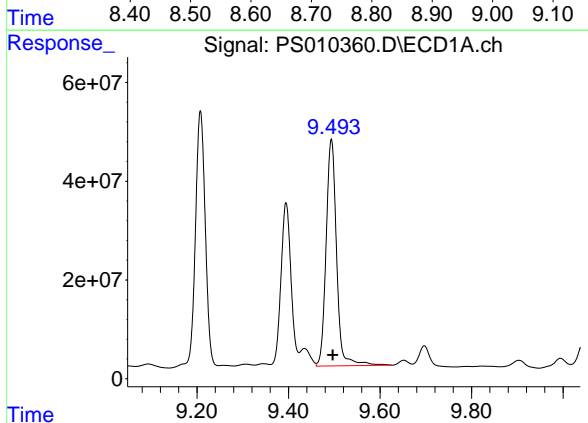


#11 2,4,5-TP (SILVEX)
 R.T.: 9.208 min
 Delta R.T.: -0.004 min
 Response: 780318051
 Conc: 211.73 ng/ml

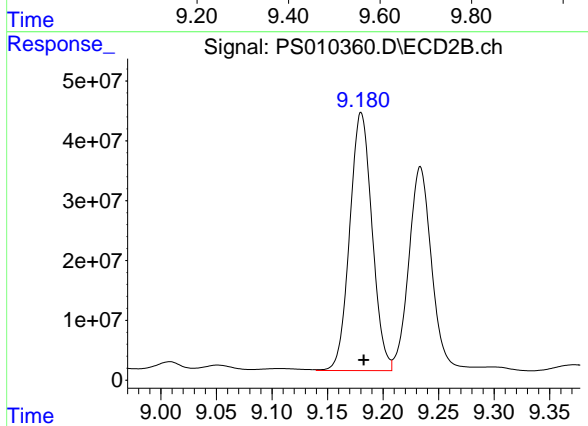
Instrument :
 ECD_S
 ClientSampled :



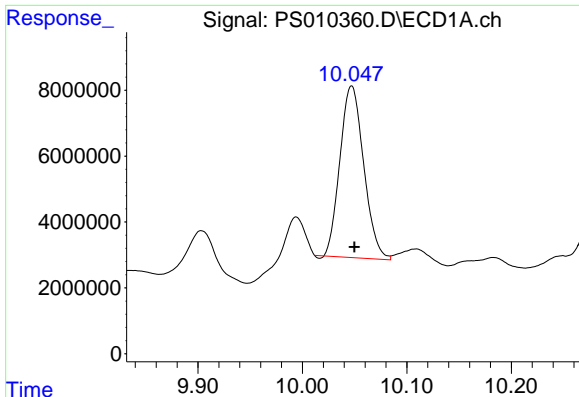
#11 2,4,5-TP (SILVEX)
 R.T.: 8.803 min
 Delta R.T.: -0.001 min
 Response: 674043163
 Conc: 232.68 ng/ml



#12 2,4,5-T
 R.T.: 9.494 min
 Delta R.T.: -0.003 min
 Response: 728744315
 Conc: 207.10 ng/ml



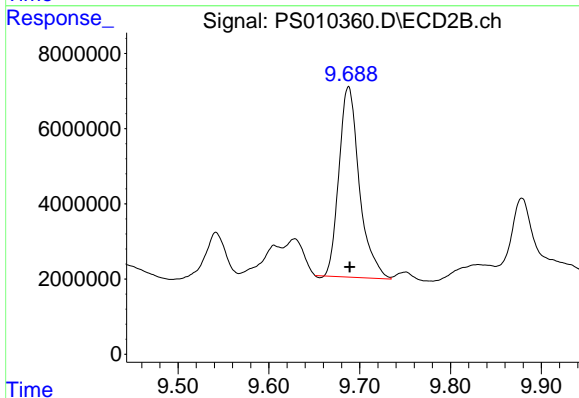
#12 2,4,5-T
 R.T.: 9.180 min
 Delta R.T.: -0.002 min
 Response: 603451098
 Conc: 207.55 ng/ml



#13 2,4-DB

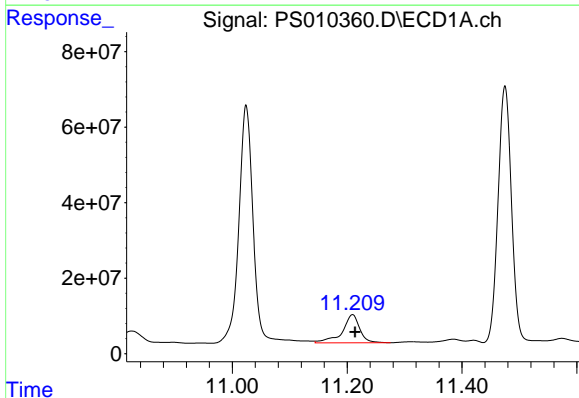
R.T.: 10.047 min
 Delta R.T.: -0.003 min
 Response: 82457821
 Conc: 163.92 ng/ml

Instrument :
 ECD_S
 ClientSampleId :



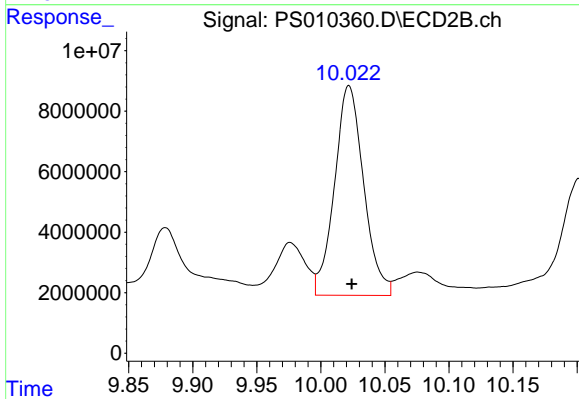
#13 2,4-DB

R.T.: 9.688 min
 Delta R.T.: -0.001 min
 Response: 78974089
 Conc: 198.16 ng/ml



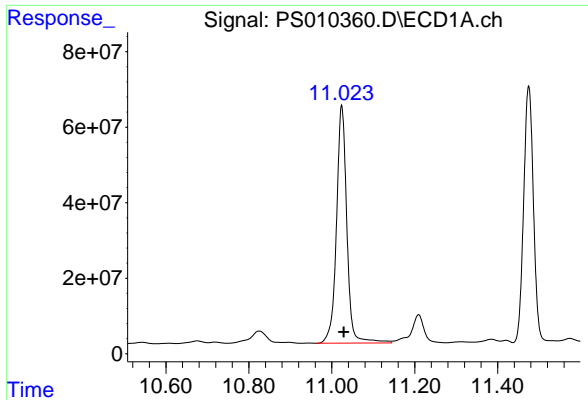
#14 DINOSEB

R.T.: 11.209 min
 Delta R.T.: -0.004 min
 Response: 158931308
 Conc: 58.00 ng/ml



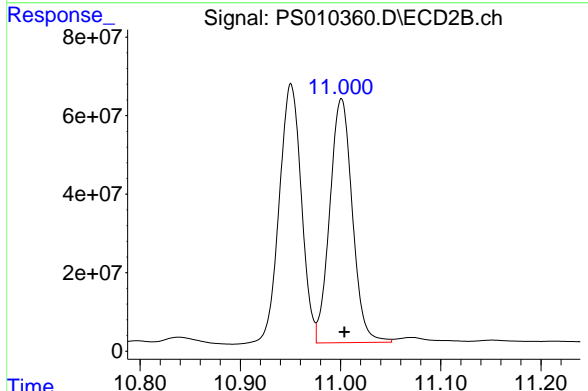
#14 DINOSEB

R.T.: 10.022 min
 Delta R.T.: -0.002 min
 Response: 109820103
 Conc: 51.54 ng/ml

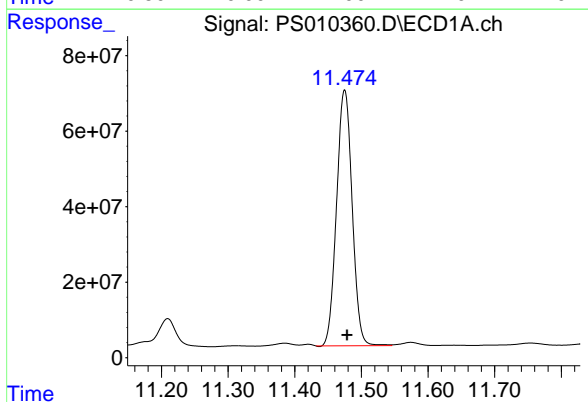


#15 Picloram
 R.T.: 11.024 min
 Delta R.T.: -0.005 min
 Response: 1096313921
 Conc: 239.12 ng/ml

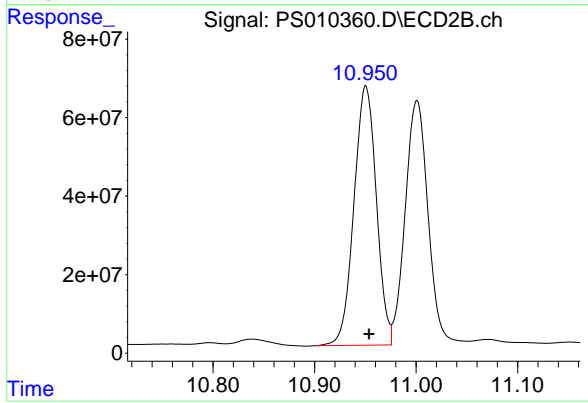
Instrument :
 ECD_S
 ClientSampleId :



#15 Picloram
 R.T.: 11.001 min
 Delta R.T.: -0.003 min
 Response: 971920673
 Conc: 230.21 ng/ml



#16 DCPA
 R.T.: 11.475 min
 Delta R.T.: -0.004 min
 Response: 1100714167
 Conc: 243.33 ng/ml



#16 DCPA
 R.T.: 10.951 min
 Delta R.T.: -0.003 min
 Response: 1011987283
 Conc: 283.09 ng/ml