

Data Path : Z:\pestpcbsrv\HPCHEM1\ECD_S\Data\PS051921\
 Data File : PS015036.D
 Signal(s) : Signal #1: ECD1A.ch Signal #2: ECD2B.ch
 Acq On : 19 May 2021 18:09
 Operator : DD\AJ
 Sample : PB136519BS
 Misc :
 ALS Vial : 7 Sample Multiplier: 1

Instrument :
 ECD_S
 ClientSampleId :

Integration File signal 1: autoint1.e
 Integration File signal 2: autoint2.e
 Quant Time: May 19 19:05:50 2021
 Quant Method : Z:\pestpcbsrv\HPCHEM1\ECD_S\Method\PS051021.M
 Quant Title : 8080.M
 QLast Update : Tue May 11 00:04:04 2021
 Response via : Initial Calibration
 Integrator: ChemStation

Volume Inj. : 2 µl
 Signal #1 Phase : Rtx-CLPesticides Signal #2 Phase: Rtx-CLPesticides2
 Signal #1 Info : 30M x 0.32mm x0.5 Signal #2 Info : 30M x 0.32mm x 0.25µm

	Compound	RT#1	RT#2	Resp#1	Resp#2	ng/ml	ng/ml

System Monitoring Compounds							
4) S	2,4-DCAA	7.156	6.885	916.1E6	298.9E6	547.491	617.746
Target Compounds							
1) T	Dalapon	3.002	2.602	975.8E6	438.7E6	477.067	649.049 #
2) T	3,5-DICHL...	6.382	6.048	1239.4E6	445.9E6	528.780	577.138
3) T	4-Nitroph...	6.993	6.505	377.7E6	130.1E6	454.258	437.954
5) T	DICAMBA	7.342	7.048	3252.7E6	1131.6E6	496.391	528.335
6) T	MCPD	7.507	7.142	280.1E6	95953827	57.282	54.289
7) T	MCPA	7.654	7.355	317.9E6	167.0E6	45.763	66.482 #
8) T	DICHLORPROP	8.028	7.675	827.6E6	301.6E6	518.917	557.751
9) T	2,4-D	8.261	7.973	1024.5E6	393.4E6	575.713	646.052
10) T	Pentachlo...	8.562	8.392	12784.1E6	4162.3E6	543.754	577.273
11) T	2,4,5-TP ...	9.106	8.754	5219.7E6	1720.2E6	571.148	596.867
12) T	2,4,5-T	9.393	9.136	4811.4E6	1513.3E6	526.096	567.009
13) T	2,4-DB	9.942	9.642	595.6E6	193.6E6	343.278	548.852 #
14) T	DINOSEB	11.087	9.968	3152.2E6	951.2E6	439.571	464.417
15) T	Picloram	10.921	10.958	4985.0E6	1794.5E6	410.382	450.362
16) T	DCPA	11.354	10.893	5487.3E6	2097.3E6	401.725	492.046

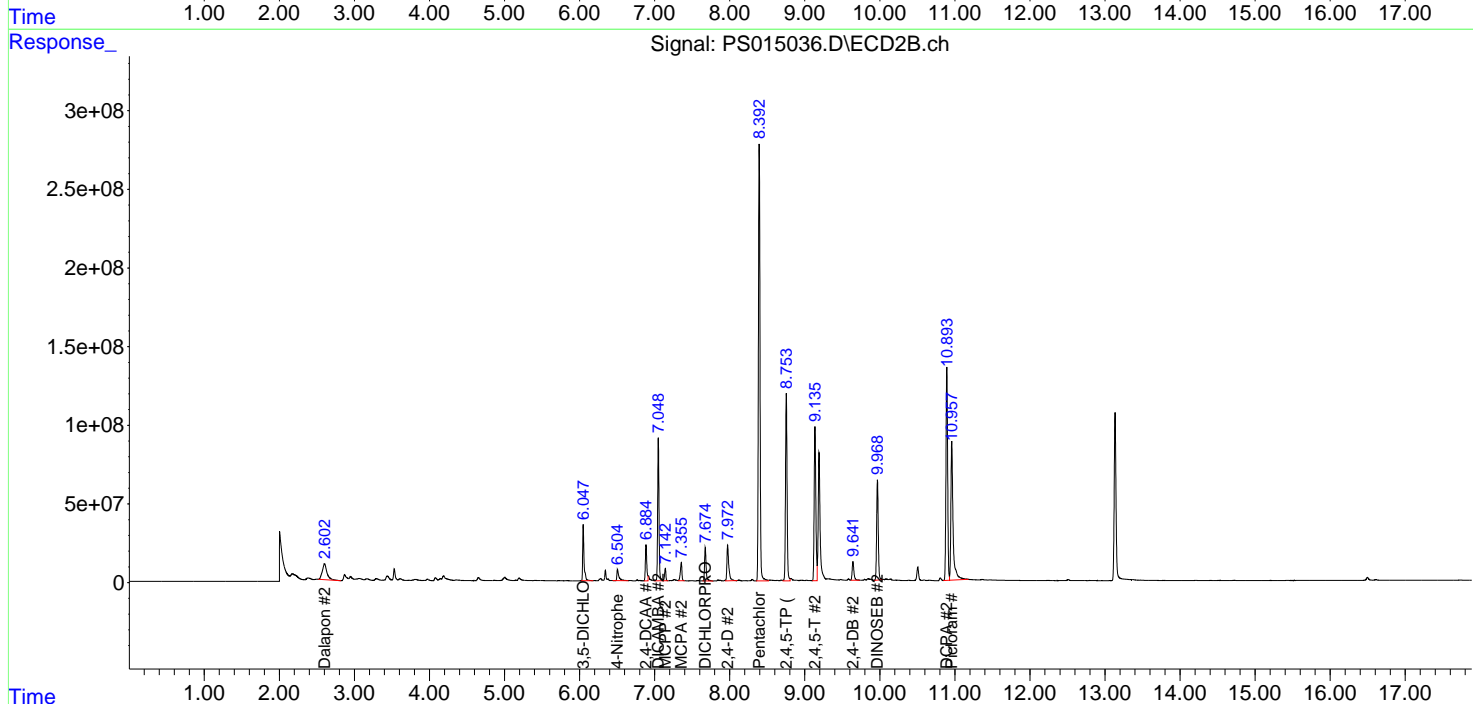
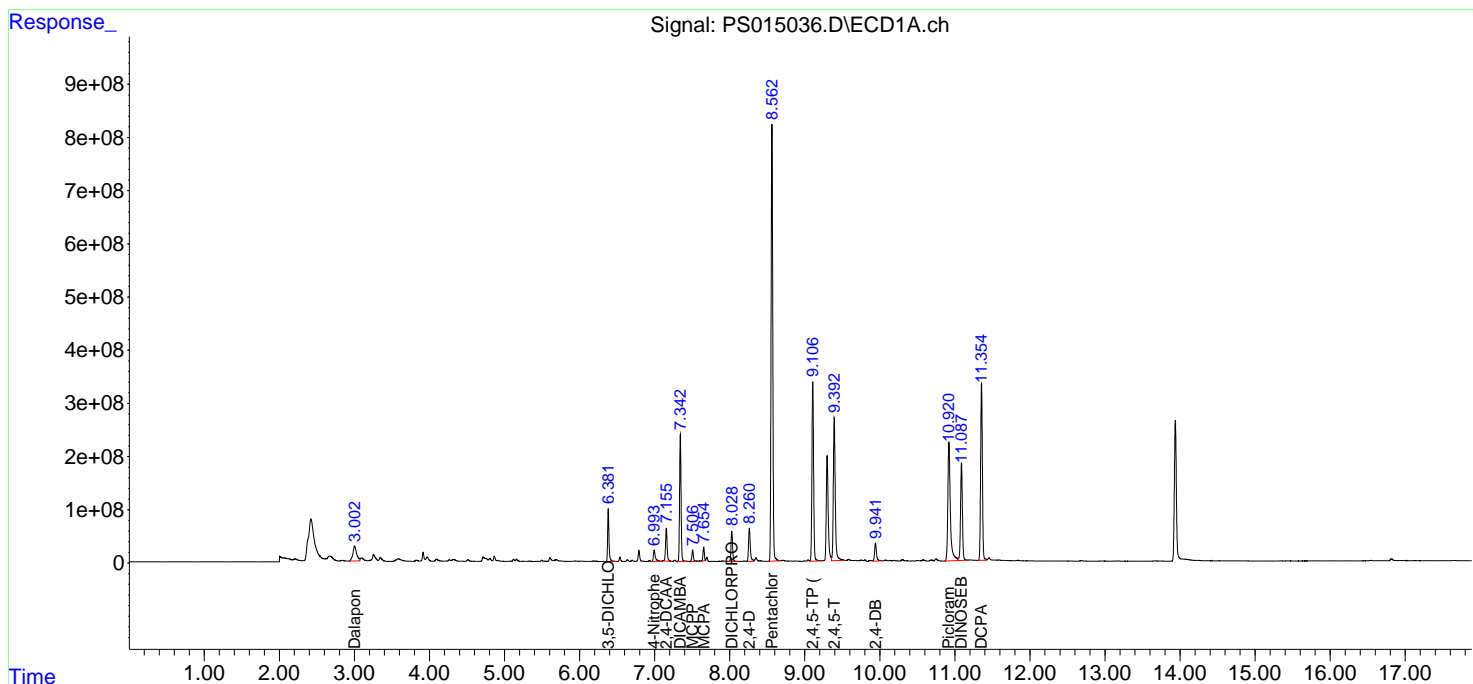
(f)=RT Delta > 1/2 Window (#)=Amounts differ by > 25% (m)=manual int.

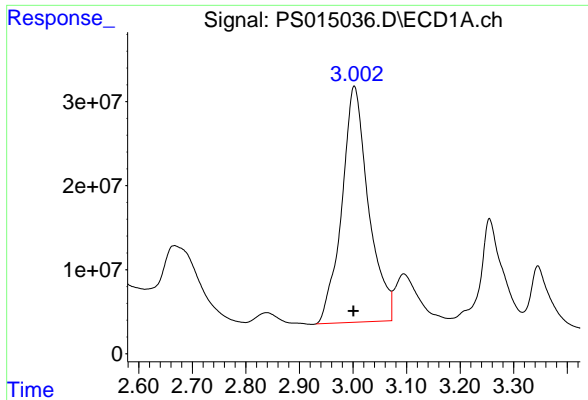
Data Path : Z:\pestpcbsrv\HPCHEM1\ECD_S\Data\PS051921\
 Data File : PS015036.D
 Signal(s) : Signal #1: ECD1A.ch Signal #2: ECD2B.ch
 Acq On : 19 May 2021 18:09
 Operator : DD\AJ
 Sample : PB136519BS
 Misc :
 ALS Vial : 7 Sample Multiplier: 1

Instrument :
 ECD_S
 ClientSampled :

Integration File signal 1: autoint1.e
 Integration File signal 2: autoint2.e
 Quant Time: May 19 19:05:50 2021
 Quant Method : Z:\pestpcbsrv\HPCHEM1\ECD_S\Method\PS051021.M
 Quant Title : 8080.M
 QLast Update : Tue May 11 00:04:04 2021
 Response via : Initial Calibration
 Integrator: ChemStation

Volume Inj. : 2 µl
 Signal #1 Phase : Rtx-CLPesticides Signal #2 Phase: Rtx-CLPesticides2
 Signal #1 Info : 30M x 0.32mm x0.5 Signal #2 Info : 30M x 0.32mm x 0.25µm

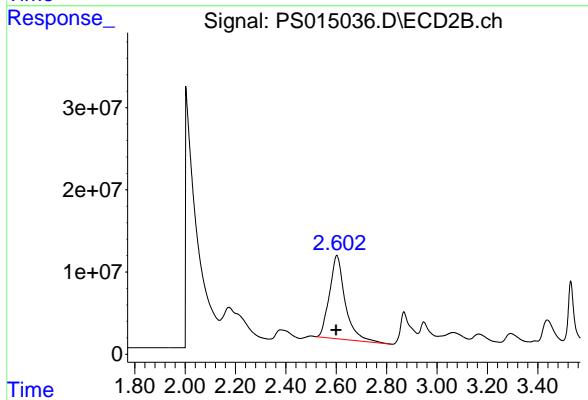




#1 Dalapon

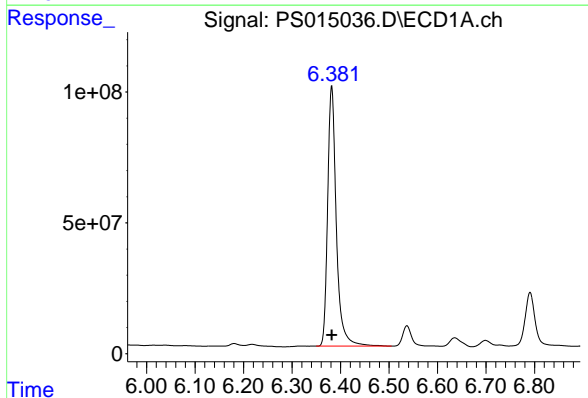
R.T.: 3.002 min
 Delta R.T.: 0.001 min
 Response: 975787661
 Conc: 477.07 ng/ml

Instrument :
 ECD_S
 ClientSampleId :



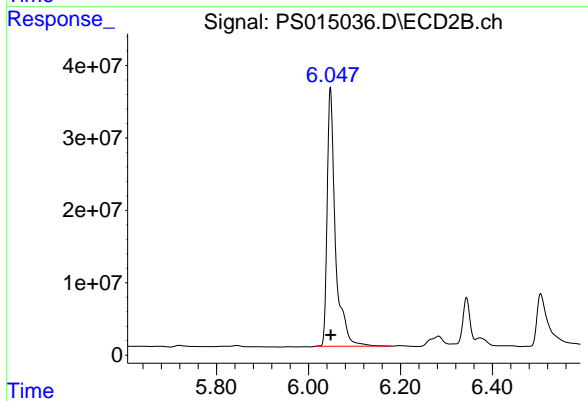
#1 Dalapon

R.T.: 2.602 min
 Delta R.T.: 0.003 min
 Response: 438700669
 Conc: 649.05 ng/ml



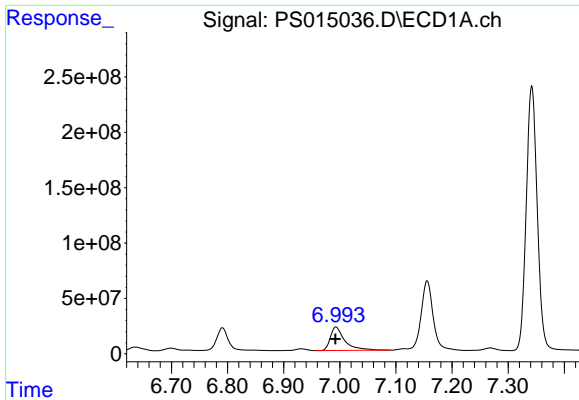
#2 3,5-DICHLOROBENZOIC ACID

R.T.: 6.382 min
 Delta R.T.: 0.000 min
 Response: 1239363818
 Conc: 528.78 ng/ml



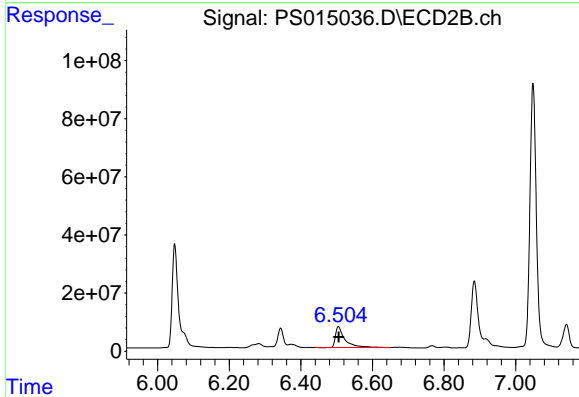
#2 3,5-DICHLOROBENZOIC ACID

R.T.: 6.048 min
 Delta R.T.: 0.000 min
 Response: 445850806
 Conc: 577.14 ng/ml

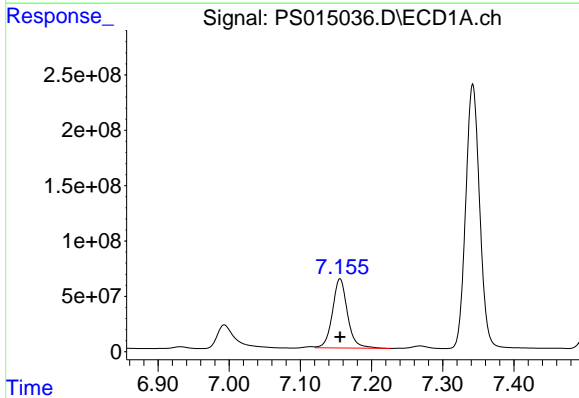


#3 4-Nitrophenol
 R.T.: 6.993 min
 Delta R.T.: 0.000 min
 Response: 377718821
 Conc: 454.26 ng/ml

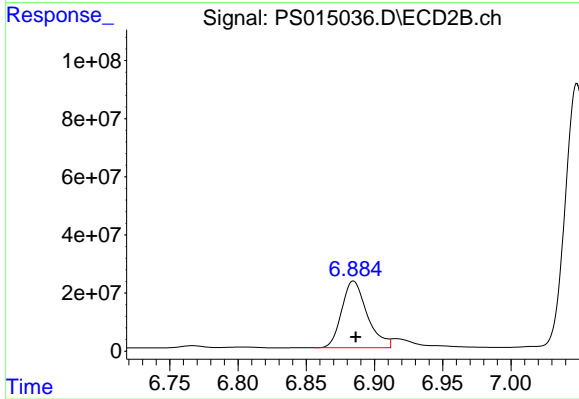
Instrument :
 ECD_S
 ClientSampled :



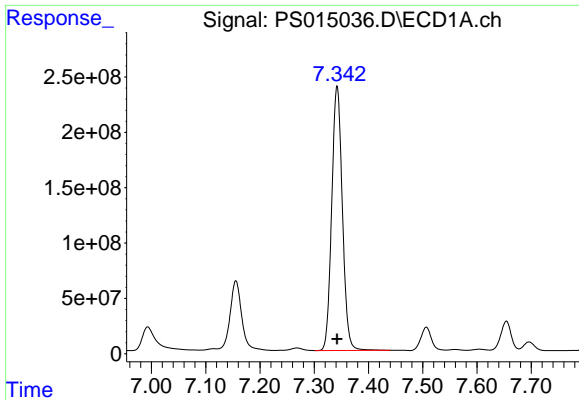
#3 4-Nitrophenol
 R.T.: 6.505 min
 Delta R.T.: -0.001 min
 Response: 130068717
 Conc: 437.95 ng/ml



#4 2,4-DCAA
 R.T.: 7.156 min
 Delta R.T.: 0.000 min
 Response: 916089464
 Conc: 547.49 ng/ml



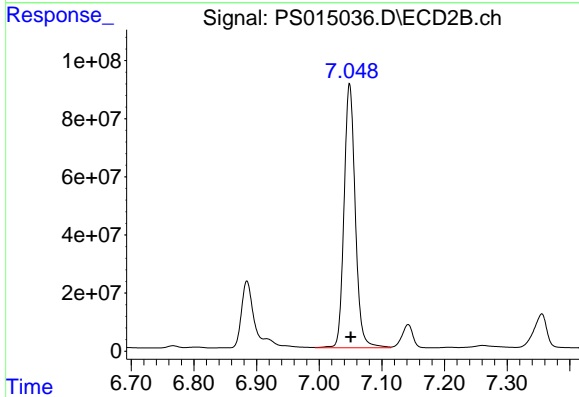
#4 2,4-DCAA
 R.T.: 6.885 min
 Delta R.T.: -0.002 min
 Response: 298935300
 Conc: 617.75 ng/ml



#5 DICAMBA

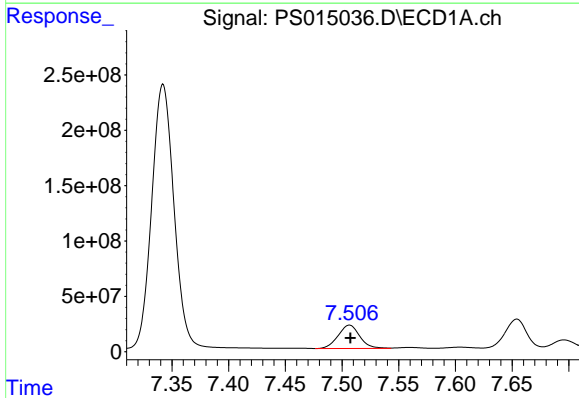
R.T.: 7.342 min
 Delta R.T.: 0.000 min
 Response: 3252655082
 Conc: 496.39 ng/ml

Instrument :
 ECD_S
 ClientSampleId :



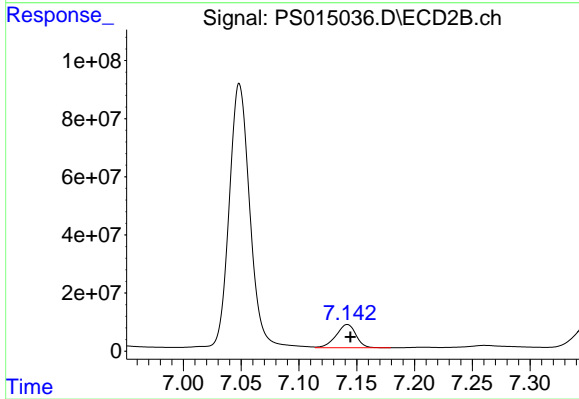
#5 DICAMBA

R.T.: 7.048 min
 Delta R.T.: -0.002 min
 Response: 1131556024
 Conc: 528.33 ng/ml



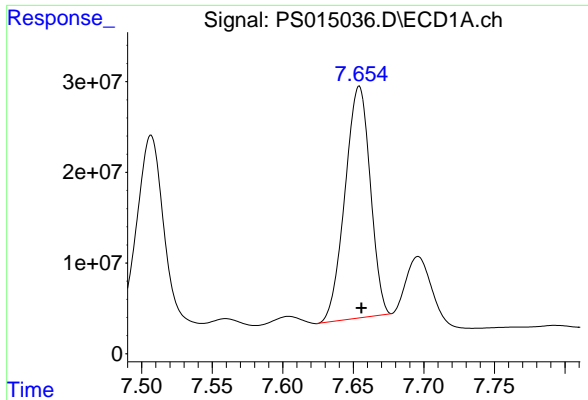
#6 MCPP

R.T.: 7.507 min
 Delta R.T.: 0.000 min
 Response: 280089848
 Conc: 57.28 ug/ml



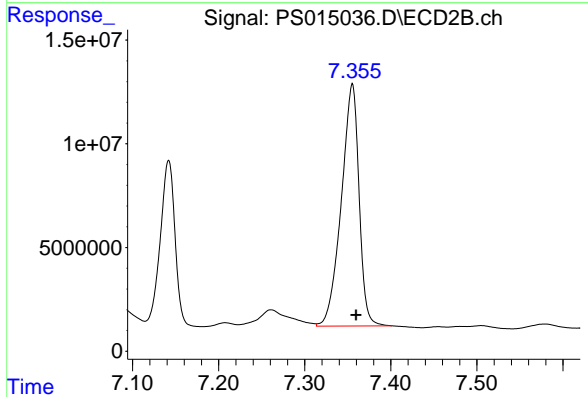
#6 MCPP

R.T.: 7.142 min
 Delta R.T.: -0.002 min
 Response: 95953827
 Conc: 54.29 ug/ml

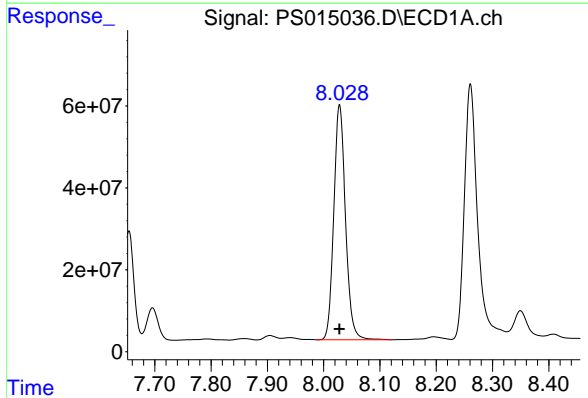


#7 MCPA
R.T.: 7.654 min
Delta R.T.: -0.002 min
Response: 317925246
Conc: 45.76 ug/ml

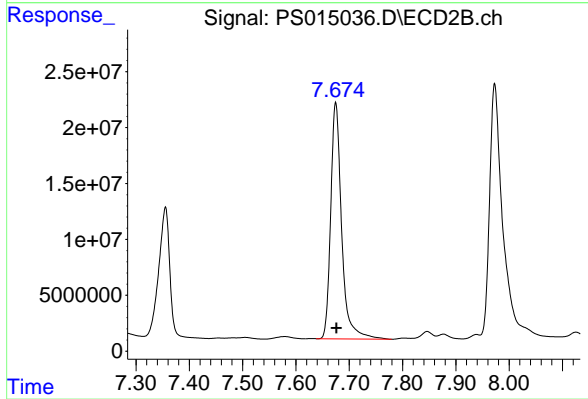
Instrument :
ECD_S
ClientSampled :



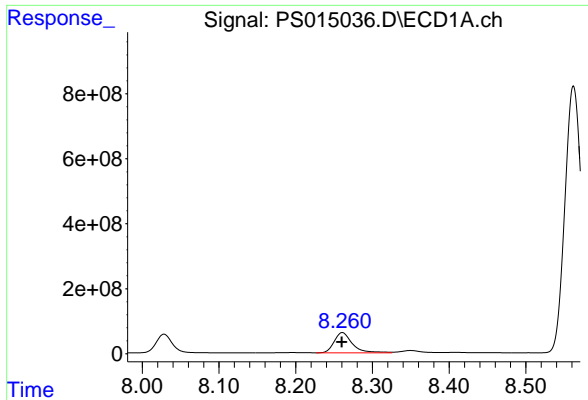
#7 MCPA
R.T.: 7.355 min
Delta R.T.: -0.004 min
Response: 166993704
Conc: 66.48 ug/ml



#8 DICHLORPROP
R.T.: 8.028 min
Delta R.T.: 0.000 min
Response: 827624005
Conc: 518.92 ng/ml

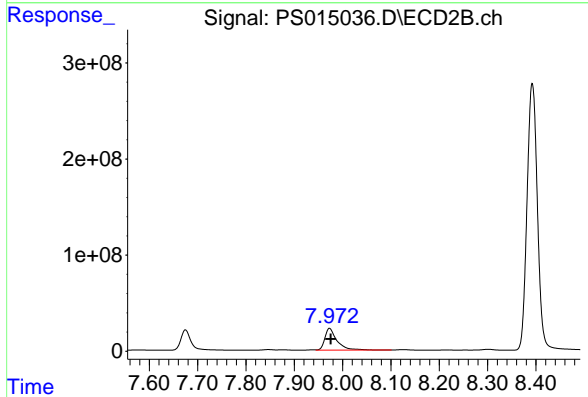


#8 DICHLORPROP
R.T.: 7.675 min
Delta R.T.: -0.001 min
Response: 301627356
Conc: 557.75 ng/ml

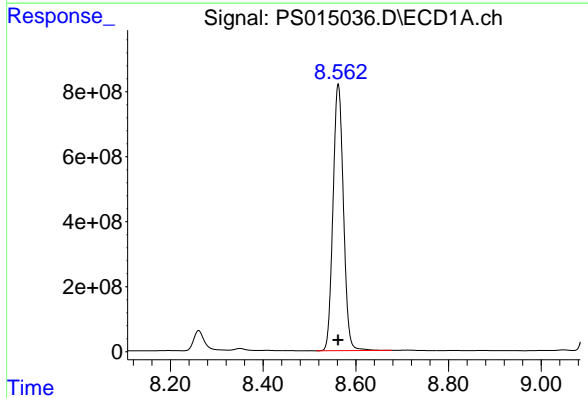


#9 2,4-D
 R.T.: 8.261 min
 Delta R.T.: 0.000 min
 Response: 1024499043
 Conc: 575.71 ng/ml

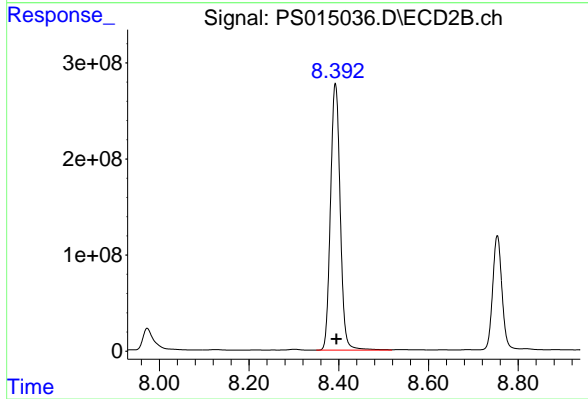
Instrument :
 ECD_S
 ClientSampled :



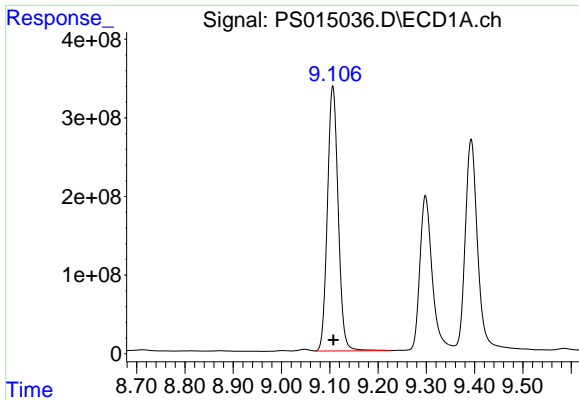
#9 2,4-D
 R.T.: 7.973 min
 Delta R.T.: -0.003 min
 Response: 393398941
 Conc: 646.05 ng/ml



#10 Pentachlorophenol
 R.T.: 8.562 min
 Delta R.T.: 0.000 min
 Response: 12784103562
 Conc: 543.75 ng/ml

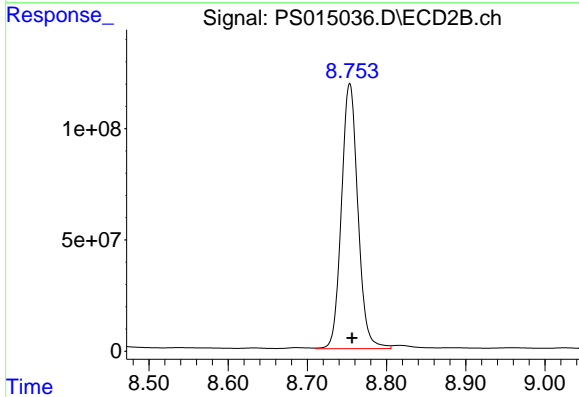


#10 Pentachlorophenol
 R.T.: 8.392 min
 Delta R.T.: -0.002 min
 Response: 4162281736
 Conc: 577.27 ng/ml

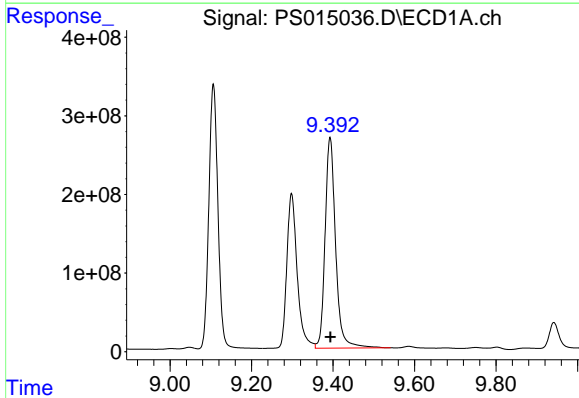


#11 2,4,5-TP (SILVEX)
 R.T.: 9.106 min
 Delta R.T.: -0.001 min
 Response: 5219749521
 Conc: 571.15 ng/ml

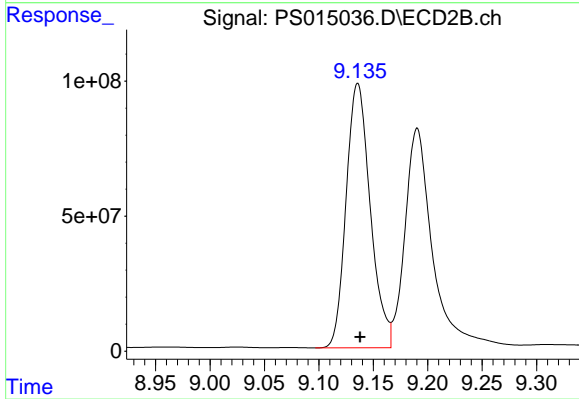
Instrument :
 ECD_S
 ClientSampled :



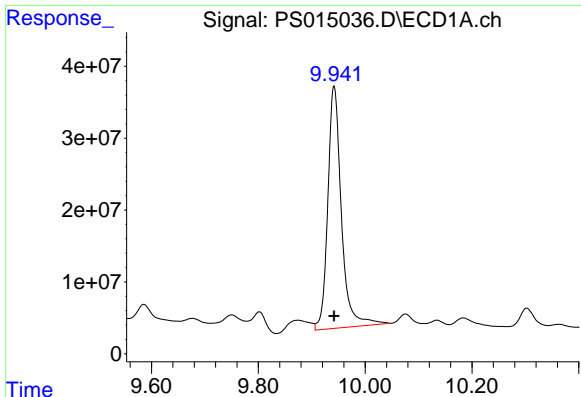
#11 2,4,5-TP (SILVEX)
 R.T.: 8.754 min
 Delta R.T.: -0.003 min
 Response: 1720203339
 Conc: 596.87 ng/ml



#12 2,4,5-T
 R.T.: 9.393 min
 Delta R.T.: -0.001 min
 Response: 4811360733
 Conc: 526.10 ng/ml



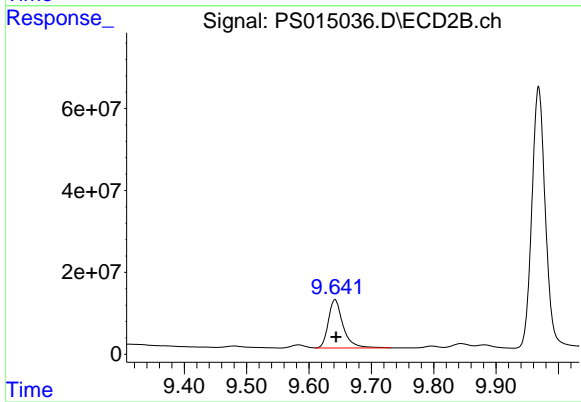
#12 2,4,5-T
 R.T.: 9.136 min
 Delta R.T.: -0.002 min
 Response: 1513276211
 Conc: 567.01 ng/ml



#13 2,4-DB

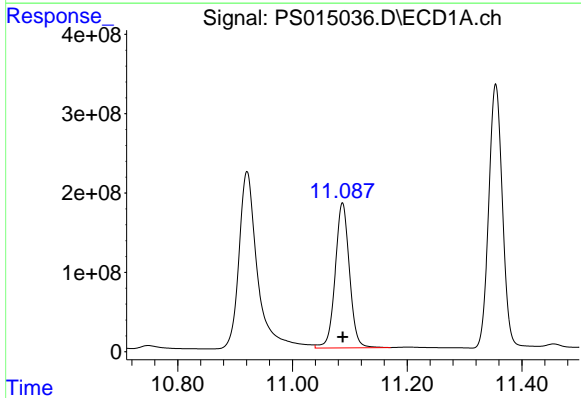
R.T.: 9.942 min
 Delta R.T.: 0.000 min
 Response: 595647683
 Conc: 343.28 ng/ml

Instrument :
 ECD_S
 ClientSampleId :



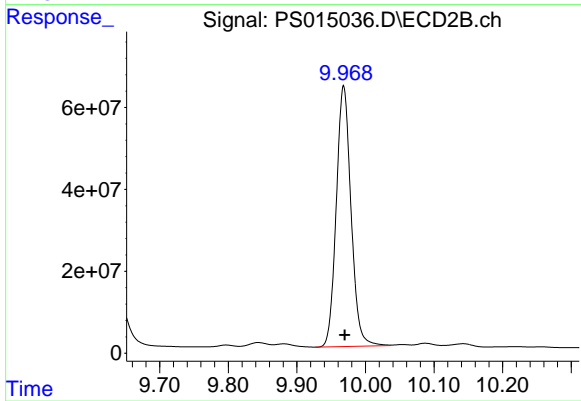
#13 2,4-DB

R.T.: 9.642 min
 Delta R.T.: -0.001 min
 Response: 193615631
 Conc: 548.85 ng/ml



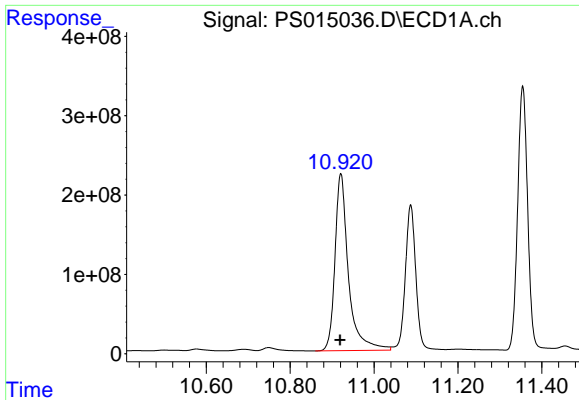
#14 DINOSEB

R.T.: 11.087 min
 Delta R.T.: 0.000 min
 Response: 3152162350
 Conc: 439.57 ng/ml



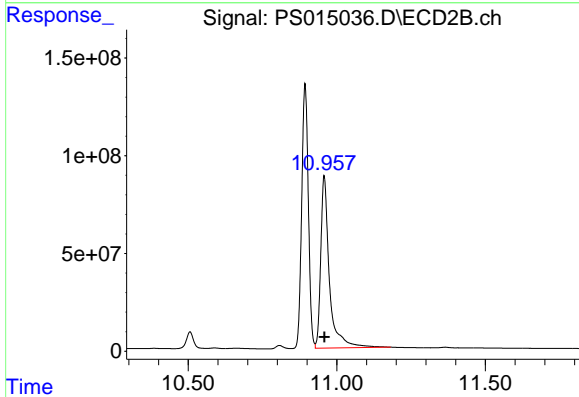
#14 DINOSEB

R.T.: 9.968 min
 Delta R.T.: -0.002 min
 Response: 951220753
 Conc: 464.42 ng/ml

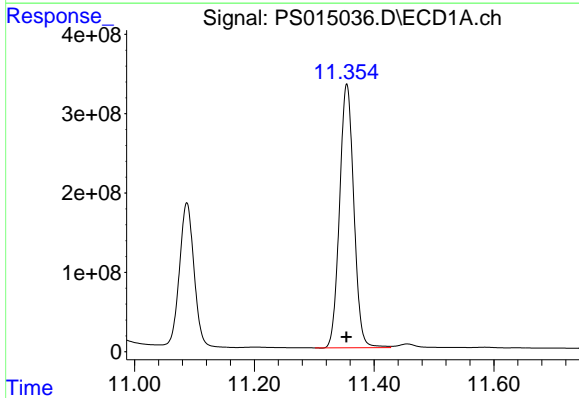


#15 Picloram
 R.T.: 10.921 min
 Delta R.T.: 0.002 min
 Response: 4985021443
 Conc: 410.38 ng/ml

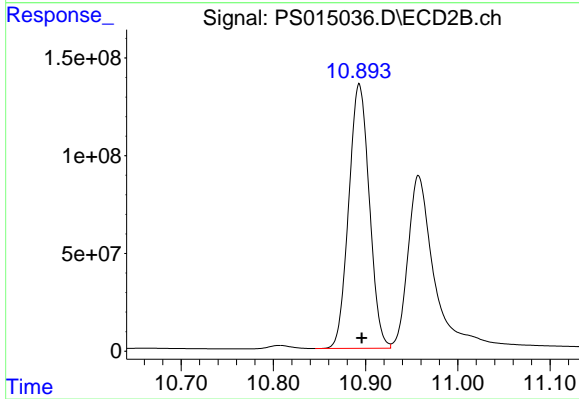
Instrument :
 ECD_S
 ClientSampled :



#15 Picloram
 R.T.: 10.958 min
 Delta R.T.: 0.000 min
 Response: 1794540236
 Conc: 450.36 ng/ml



#16 DCPA
 R.T.: 11.354 min
 Delta R.T.: 0.000 min
 Response: 5487323288
 Conc: 401.72 ng/ml



#16 DCPA
 R.T.: 10.893 min
 Delta R.T.: -0.002 min
 Response: 2097263701
 Conc: 492.05 ng/ml