

Data Path : Z:\pestpcbsrv\HPCHEM1\ECD_S\Data\PS051922\
 Data File : PS019486.D
 Signal(s) : Signal #1: ECD1A.ch Signal #2: ECD2B.ch
 Acq On : 20 May 2022 02:44
 Operator : AJ\MA
 Sample : N2879-01MSD
 Misc :
 ALS Vial : 8 Sample Multiplier: 1

Instrument :
 ECD_S
ClientSampleId :
 TP1-0516MSD

Manual Integrations
APPROVED

Reviewed By :Abdul Mirza 05/20/2022
 Supervised By :mohammad ahmed 05/20/2022

Integration File signal 1: autoint1.e
 Integration File signal 2: autoint2.e
 Quant Time: May 20 03:41:08 2022
 Quant Method : Z:\pestpcbsrv\HPCHEM1\ECD_S\Method\PS050422.M
 Quant Title : 8080.M
 QLast Update : Wed May 04 16:27:11 2022
 Response via : Initial Calibration
 Integrator: ChemStation

Volume Inj. : 2 µl
 Signal #1 Phase : Rtx-CLPesticides Signal #2 Phase: Rtx-CLPesticides2
 Signal #1 Info : 30M x 0.32mm x0.5 Signal #2 Info : 30M x 0.32mm x 0.25µm

	Compound	RT#1	RT#2	Resp#1	Resp#2	ng/ml	ng/ml

System Monitoring Compounds							
4) S	2,4-DCAA	7.217	6.796	1352.5E6	474.5E6	495.265	612.659
Target Compounds							
1) T	Dalapon	3.025	2.534	640.0E6	197.6E6	132.560	222.332 #
2) T	3,5-DICHL...	6.429	5.974	473.6E6	151.9E6	133.976	130.265m
3) T	4-Nitroph...	7.050	6.415	163.1E6	52792036	168.348	149.623
5) T	DICAMBA	7.408	6.961	1487.0E6	487.6E6	134.640	145.507
6) T	MCP P	7.572	7.053	106.8E6	32696262	11.943	12.295
7) T	MCPA	7.721	7.264	136.9E6	63459361	10.985	17.038 #
8) T	DICHLORPROP	8.101	7.585	333.1E6	175.8E6	119.081	205.176 #
9) T	2,4-D	8.332	7.876	448.2E6	171.5E6	142.076	171.688m
10) T	Pentachlo...	8.640	8.304	5407.8E6	1736.1E6	137.650	154.437
11) T	2,4,5-TP ...	9.192	8.665	2356.2E6	719.4E6	130.355	149.482
12) T	2,4,5-T	9.479	9.048	2631.0E6	652.6E6	124.392	150.711
13) T	2,4-DB	10.031	9.558	268.6E6	201.8E6	62.637	355.005 #
14) T	DINOSEB	11.177	9.878	393.3E6	343.6E6	23.817m	118.559 #
15) T	Picloram	11.017	10.864	2225.3E6	1081.2E6	76.130m	180.783 #
16) T	DCPA	11.454	10.805	3039.6E6	944.3E6	116.144	160.857 #

(f)=RT Delta > 1/2 Window (#)=Amounts differ by > 25% (m)=manual int.

Data Path : Z:\pestpcbsrv\HPCHEM1\ECD_S\Data\PS051922\
 Data File : PS019486.D
 Signal(s) : Signal #1: ECD1A.ch Signal #2: ECD2B.ch
 Acq On : 20 May 2022 02:44
 Operator : AJ\MA
 Sample : N2879-01MSD
 Misc :
 ALS Vial : 8 Sample Multiplier: 1

Instrument :

ECD_S

ClientSampleId :

TP1-0516MSD

Manual Integrations

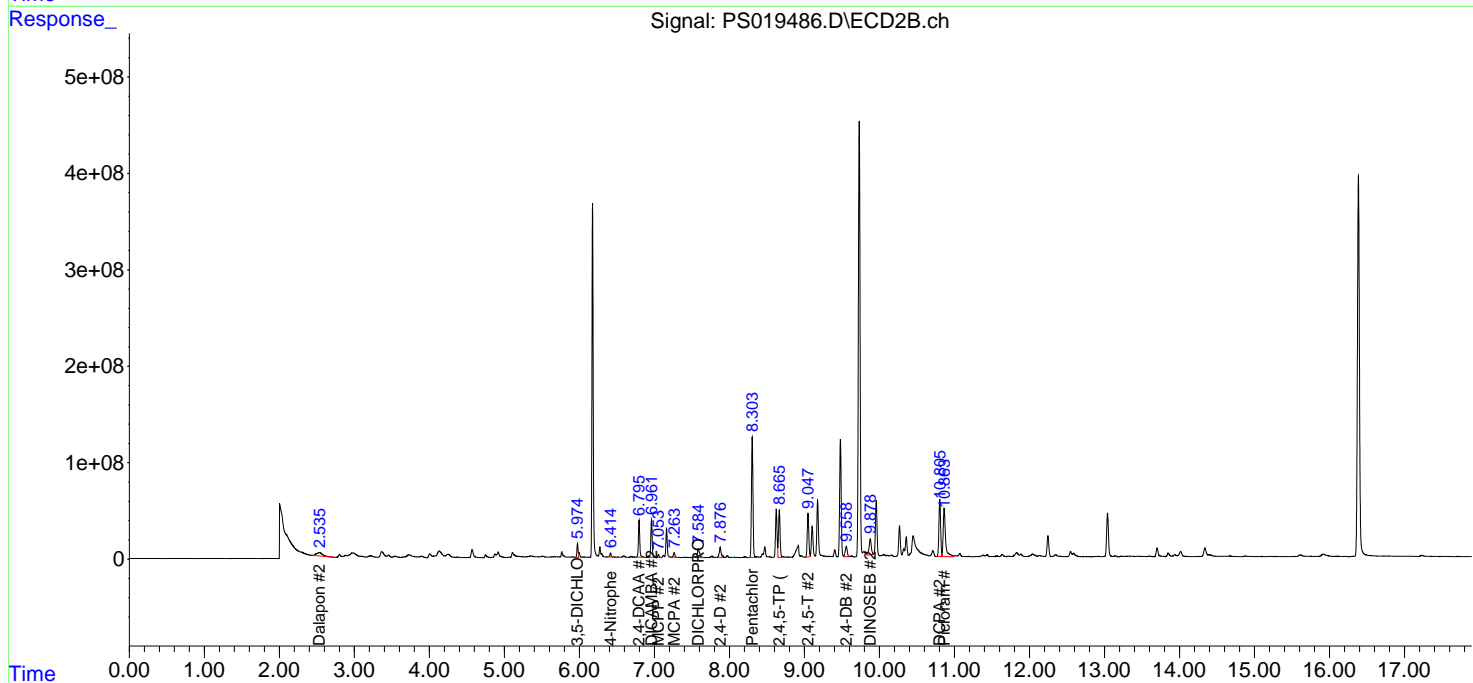
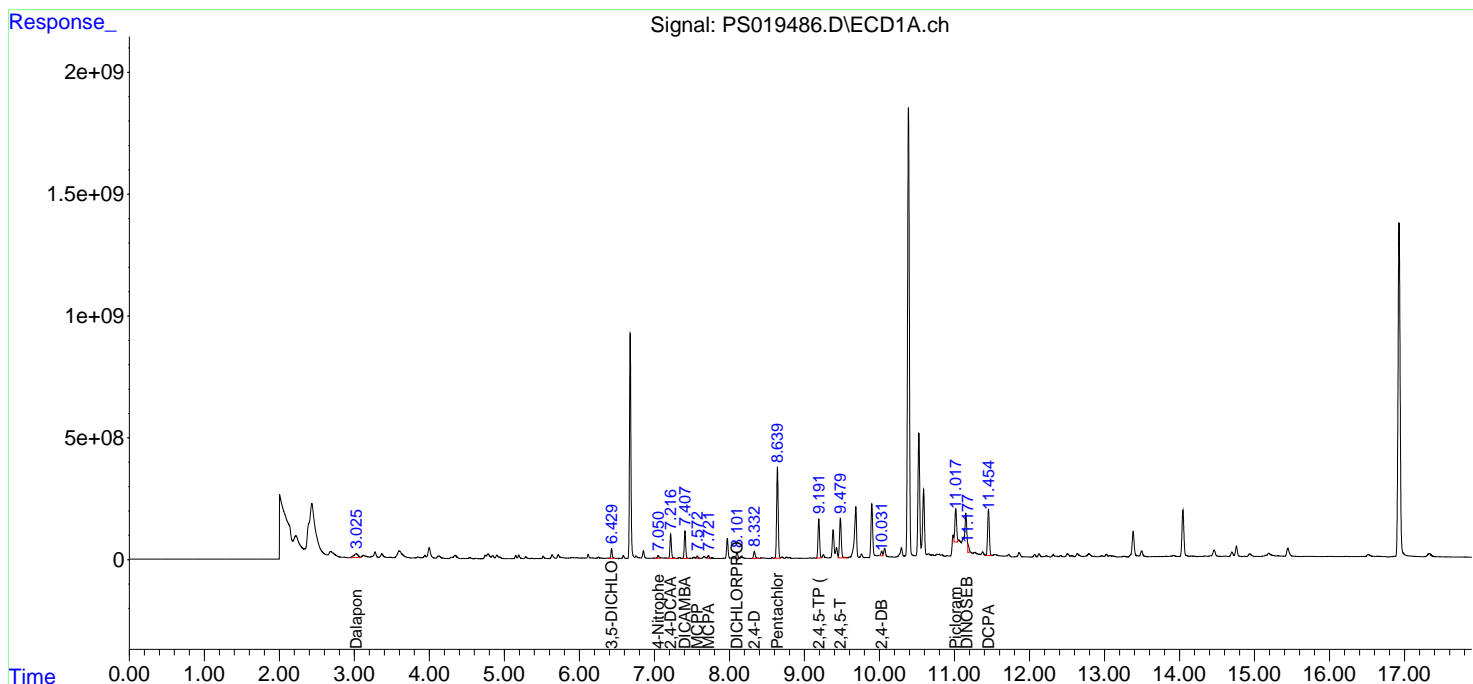
APPROVED

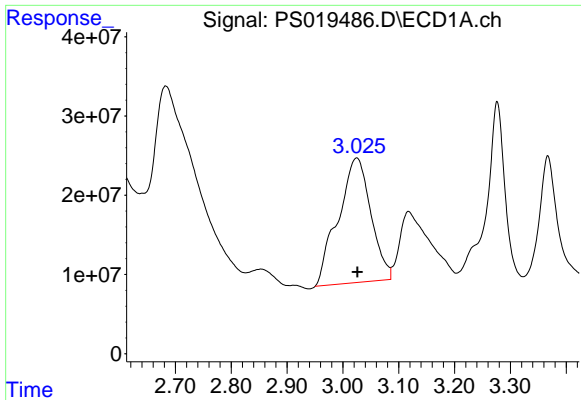
Reviewed By :Abdul Mirza 05/20/2022

Supervised By :mohammad ahmed 05/20/2022

Integration File signal 1: autoint1.e
 Integration File signal 2: autoint2.e
 Quant Time: May 20 03:41:08 2022
 Quant Method : Z:\pestpcbsrv\HPCHEM1\ECD_S\Method\PS050422.M
 Quant Title : 8080.M
 QLast Update : Wed May 04 16:27:11 2022
 Response via : Initial Calibration
 Integrator: ChemStation

Volume Inj. : 2 µl
 Signal #1 Phase : Rtx-CLPesticides Signal #2 Phase: Rtx-CLPesticides2
 Signal #1 Info : 30M x 0.32mm x0.5 Signal #2 Info : 30M x 0.32mm x 0.25µm





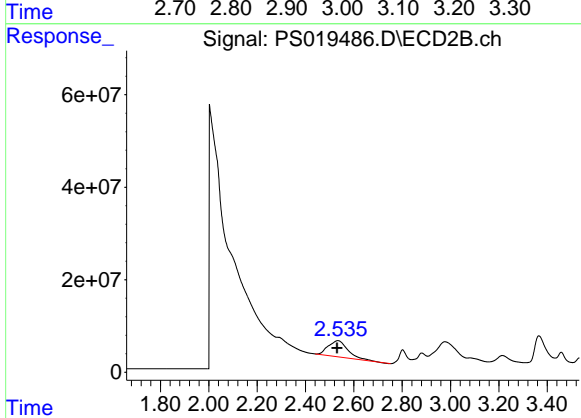
#1 Dalapon

R.T.: 3.025 min
 Delta R.T.: -0.001 min
 Response: 639958925
 Conc: 132.56 ng/ml

Instrument : ECD_S
 ClientSampleId : TP1-0516MSD

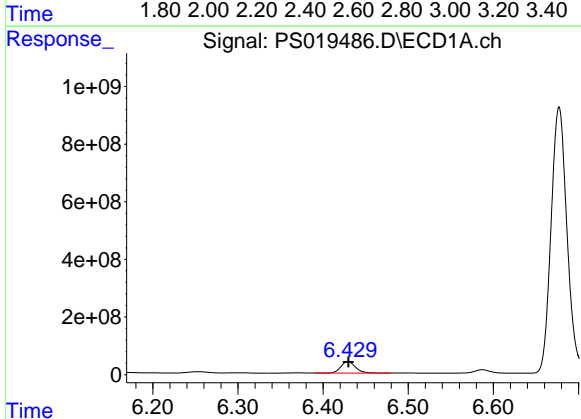
Manual Integrations
 APPROVED

Reviewed By :Abdul Mirza 05/20/2022
 Supervised By :mohammad ahmed 05/20/2022



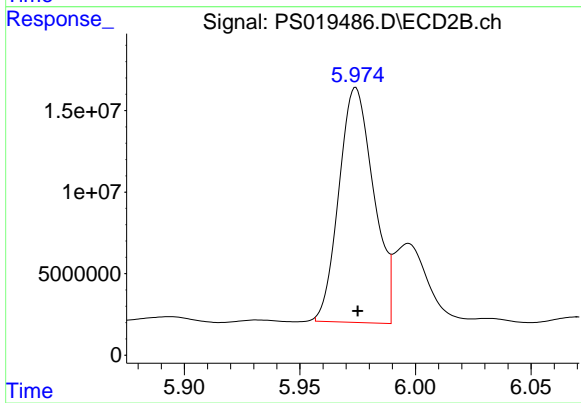
#1 Dalapon

R.T.: 2.534 min
 Delta R.T.: 0.004 min
 Response: 197635723
 Conc: 222.33 ng/ml



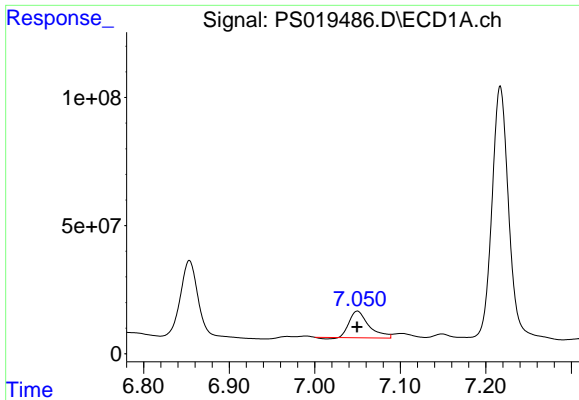
#2 3,5-DICHLOROBENZOIC ACID

R.T.: 6.429 min
 Delta R.T.: 0.000 min
 Response: 473563422
 Conc: 133.98 ng/ml



#2 3,5-DICHLOROBENZOIC ACID

R.T.: 5.974 min
 Delta R.T.: -0.001 min
 Response: 151921344
 Conc: 130.27 ng/ml m

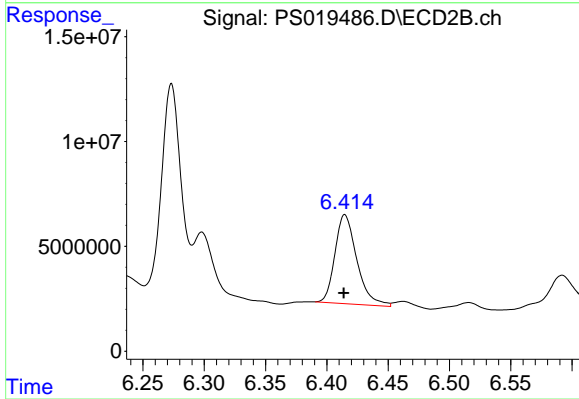


#3 4-Nitrophenol
 R.T.: 7.050 min
 Delta R.T.: 0.000 min
 Response: 163143800
 Conc: 168.35 ng/ml

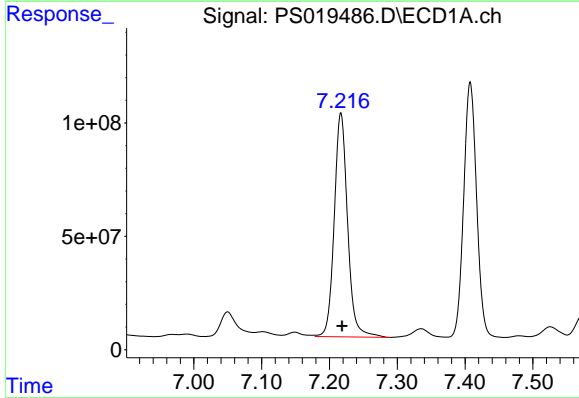
Instrument :
 ECD_S
 ClientSampleId :
 TP1-0516MSD

Manual Integrations
 APPROVED

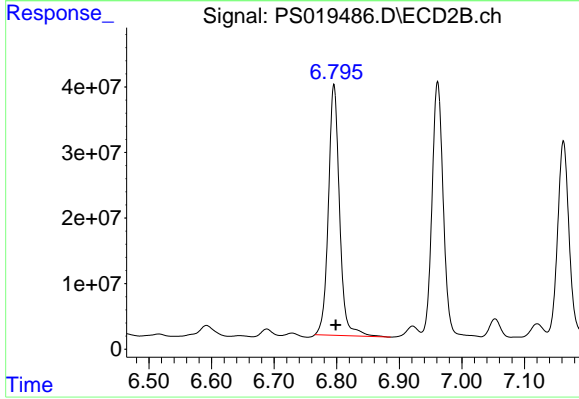
Reviewed By :Abdul Mirza 05/20/2022
 Supervised By :mohammad ahmed 05/20/2022



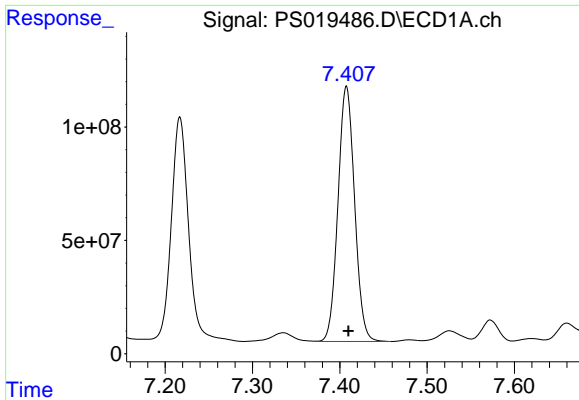
#3 4-Nitrophenol
 R.T.: 6.415 min
 Delta R.T.: 0.001 min
 Response: 52792036
 Conc: 149.62 ng/ml



#4 2,4-DCAA
 R.T.: 7.217 min
 Delta R.T.: -0.002 min
 Response: 1352506495
 Conc: 495.26 ng/ml



#4 2,4-DCAA
 R.T.: 6.796 min
 Delta R.T.: -0.003 min
 Response: 474538215
 Conc: 612.66 ng/ml



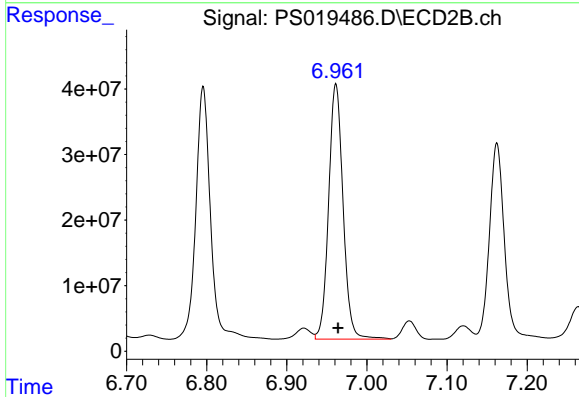
#5 DICAMBA

R.T.: 7.408 min
 Delta R.T.: -0.002 min
 Response: 1487005420
 Conc: 134.64 ng/ml

Instrument :
 ECD_S
 ClientSampleId :
 TP1-0516MSD

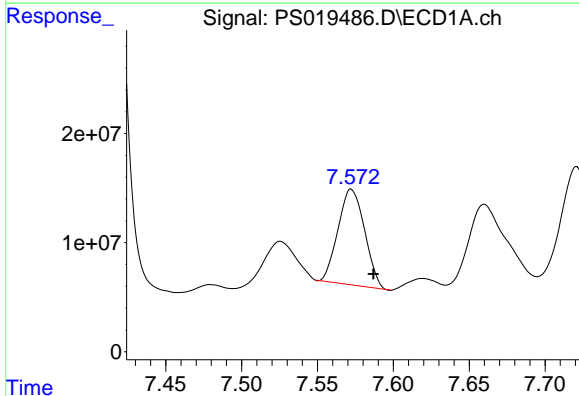
Manual Integrations
 APPROVED

Reviewed By :Abdul Mirza 05/20/2022
 Supervised By :mohammad ahmed 05/20/2022



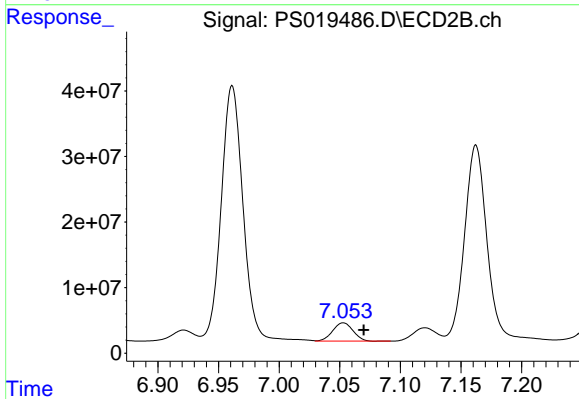
#5 DICAMBA

R.T.: 6.961 min
 Delta R.T.: -0.003 min
 Response: 487568607
 Conc: 145.51 ng/ml



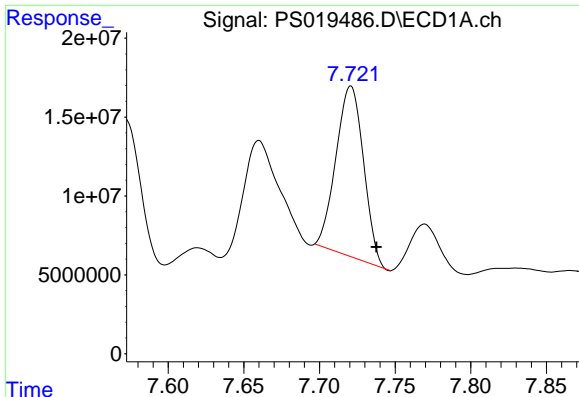
#6 MCPP

R.T.: 7.572 min
 Delta R.T.: -0.014 min
 Response: 106758603
 Conc: 11.94 ug/ml



#6 MCPP

R.T.: 7.053 min
 Delta R.T.: -0.017 min
 Response: 32696262
 Conc: 12.29 ug/ml



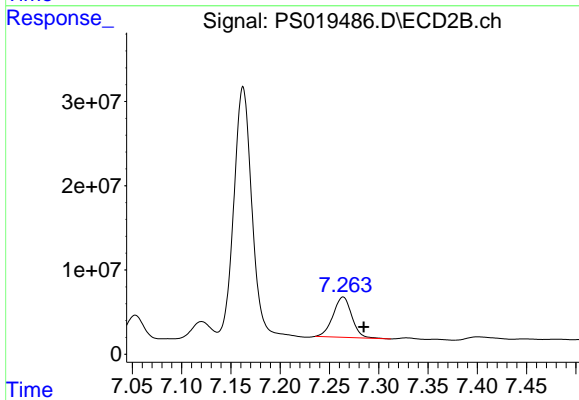
#7 MCPA

R.T.: 7.721 min
 Delta R.T.: -0.017 min
 Response: 136912525
 Conc: 10.99 ug/ml

Instrument :
 ECD_S
 ClientSampleId :
 TP1-0516MSD

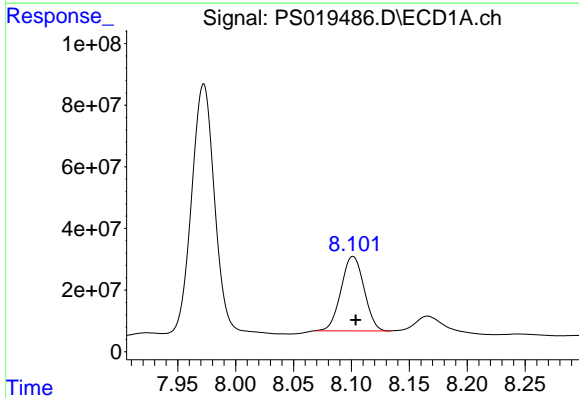
Manual Integrations
 APPROVED

Reviewed By :Abdul Mirza 05/20/2022
 Supervised By :mohammad ahmed 05/20/2022



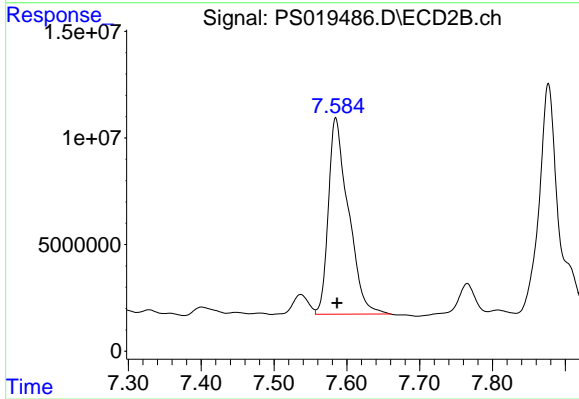
#7 MCPA

R.T.: 7.264 min
 Delta R.T.: -0.021 min
 Response: 63459361
 Conc: 17.04 ug/ml



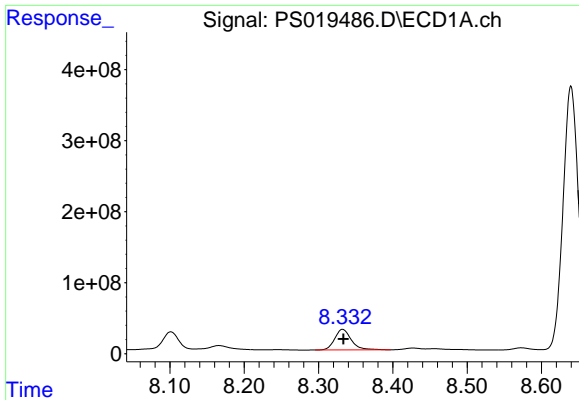
#8 DICHLORPROP

R.T.: 8.101 min
 Delta R.T.: -0.002 min
 Response: 333139496
 Conc: 119.08 ng/ml



#8 DICHLORPROP

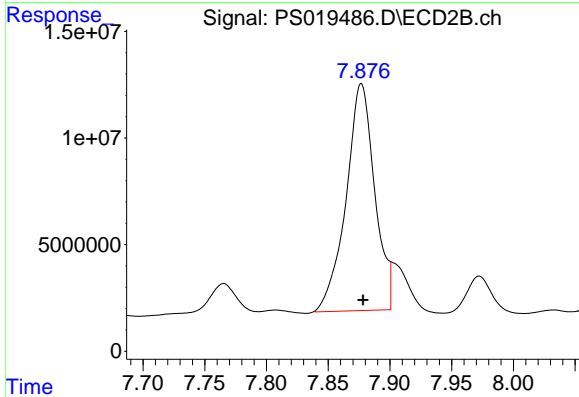
R.T.: 7.585 min
 Delta R.T.: -0.002 min
 Response: 175835060
 Conc: 205.18 ng/ml



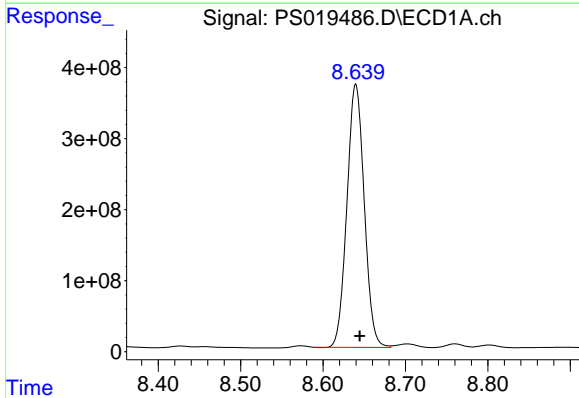
#9 2,4-D
 R.T.: 8.332 min
 Delta R.T.: 0.000 min
 Response: 448219798
 Conc: 142.08 ng/ml

Instrument : ECD_S
 Client Sample Id : TP1-0516MSD

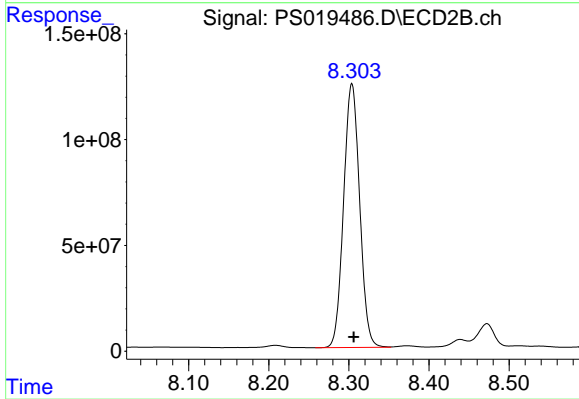
Manual Integrations
APPROVED
 Reviewed By :Abdul Mirza 05/20/2022
 Supervised By :mohammad ahmed 05/20/2022



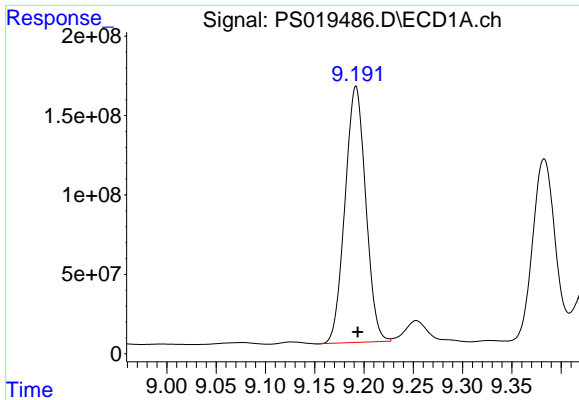
#9 2,4-D
 R.T.: 7.876 min
 Delta R.T.: -0.002 min
 Response: 171453153
 Conc: 171.69 ng/ml m



#10 Pentachlorophenol
 R.T.: 8.640 min
 Delta R.T.: -0.005 min
 Response: 5407790929
 Conc: 137.65 ng/ml



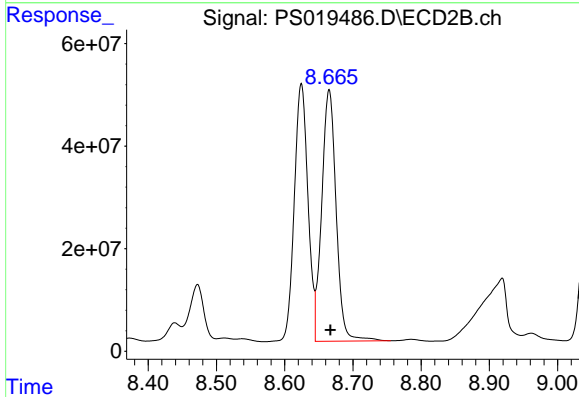
#10 Pentachlorophenol
 R.T.: 8.304 min
 Delta R.T.: -0.002 min
 Response: 1736099826
 Conc: 154.44 ng/ml



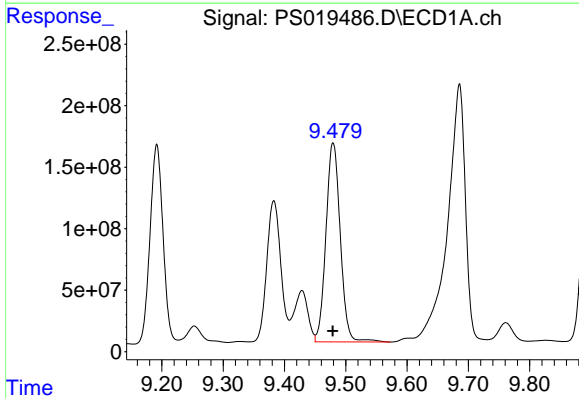
#11 2,4,5-TP (SILVEX)
 R.T.: 9.192 min
 Delta R.T.: -0.002 min
 Response: 2356184161
 Conc: 130.36 ng/ml

Instrument : ECD_S
 ClientSampleId : TP1-0516MSD

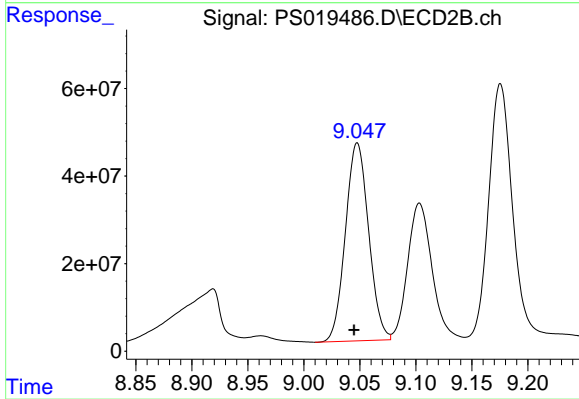
Manual Integrations
APPROVED
 Reviewed By :Abdul Mirza 05/20/2022
 Supervised By :mohammad ahmed 05/20/2022



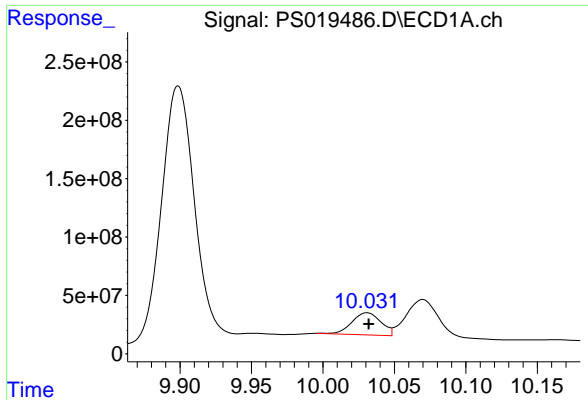
#11 2,4,5-TP (SILVEX)
 R.T.: 8.665 min
 Delta R.T.: -0.002 min
 Response: 719388398
 Conc: 149.48 ng/ml



#12 2,4,5-T
 R.T.: 9.479 min
 Delta R.T.: 0.000 min
 Response: 2631034423
 Conc: 124.39 ng/ml



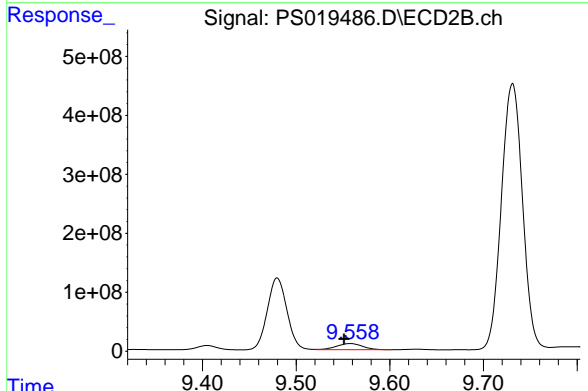
#12 2,4,5-T
 R.T.: 9.048 min
 Delta R.T.: 0.003 min
 Response: 652587718
 Conc: 150.71 ng/ml



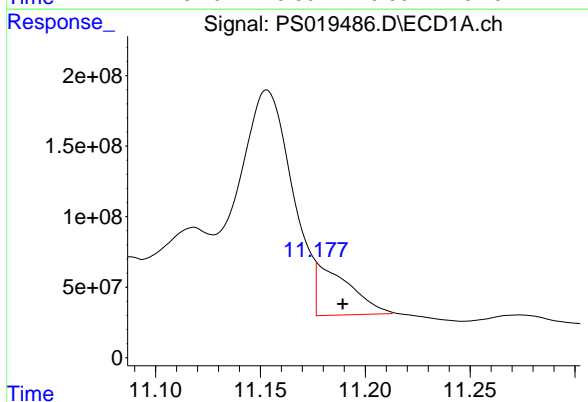
#13 2,4-DB
 R.T.: 10.031 min
 Delta R.T.: -0.001 min
 Response: 268605429
 Conc: 62.64 ng/ml

Instrument : ECD_S
 Client Sample Id : TP1-0516MSD

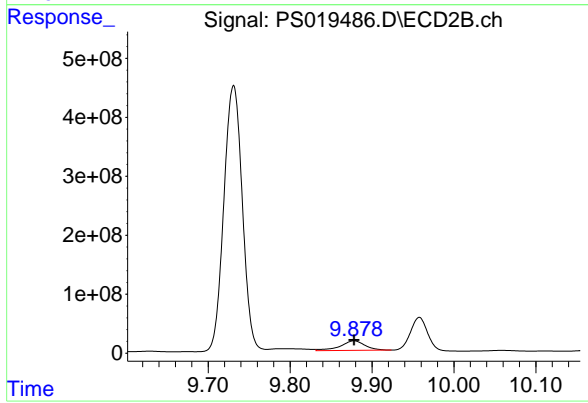
Manual Integrations
APPROVED
 Reviewed By :Abdul Mirza 05/20/2022
 Supervised By :mohammad ahmed 05/20/2022



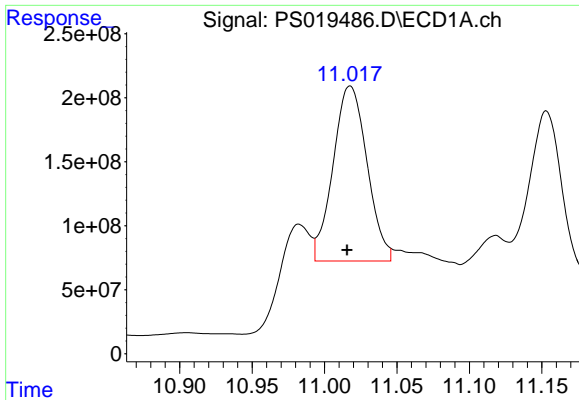
#13 2,4-DB
 R.T.: 9.558 min
 Delta R.T.: 0.007 min
 Response: 201842515
 Conc: 355.01 ng/ml



#14 DINOSEB
 R.T.: 11.177 min
 Delta R.T.: -0.013 min
 Response: 393250590
 Conc: 23.82 ng/ml m



#14 DINOSEB
 R.T.: 9.878 min
 Delta R.T.: 0.000 min
 Response: 343568676
 Conc: 118.56 ng/ml



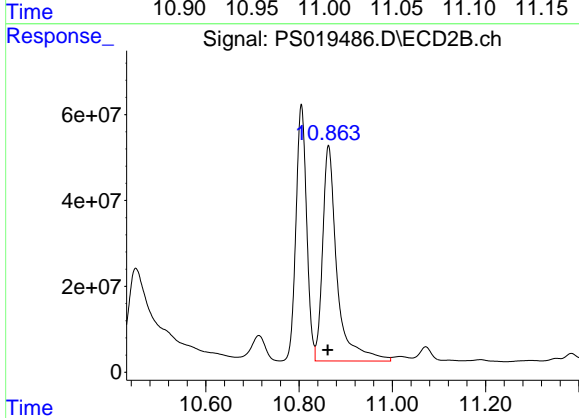
#15 Picloram

R.T.: 11.017 min
 Delta R.T.: 0.002 min
 Response: 2225290914
 Conc: 76.13 ng/ml

Instrument : ECD_S
 ClientSampleId : TP1-0516MSD

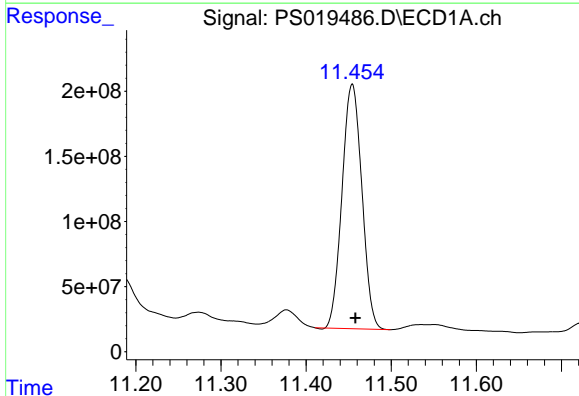
Manual Integrations
 APPROVED

Reviewed By :Abdul Mirza 05/20/2022
 Supervised By :mohammad ahmed 05/20/2022



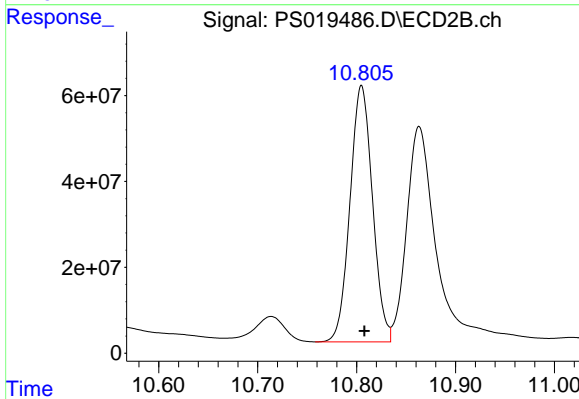
#15 Picloram

R.T.: 10.864 min
 Delta R.T.: 0.002 min
 Response: 1081225204
 Conc: 180.78 ng/ml



#16 DCPA

R.T.: 11.454 min
 Delta R.T.: -0.004 min
 Response: 3039599656
 Conc: 116.14 ng/ml



#16 DCPA

R.T.: 10.805 min
 Delta R.T.: -0.003 min
 Response: 944305724
 Conc: 160.86 ng/ml