

Data Path : Z:\pestpcbsrv\HPCHEM1\ECD_S\Data\PS051925\
 Data File : PS030266.D
 Signal(s) : Signal #1: ECD1A.ch Signal #2: ECD2B.ch
 Acq On : 19 May 2025 12:36
 Operator : AR\AJ
 Sample : Q2034-05
 Misc :
 ALS Vial : 8 Sample Multiplier: 1

Instrument :
 ECD_S
 ClientSampleId :
 L3-WC-2

Integration File signal 1: autoint1.e
 Integration File signal 2: autoint2.e
 Quant Time: May 20 05:36:55 2025
 Quant Method : Z:\pestpcbsrv\HPCHEM1\ECD_S\Method\PS051225.M
 Quant Title : 8080.M
 QLast Update : Mon May 12 14:29:24 2025
 Response via : Initial Calibration
 Integrator: ChemStation

Volume Inj. : 1 µl
 Signal #1 Phase : ZB-MR2 Signal #2 Phase: ZB-MR2
 Signal #1 Info : 30M x 0.32mm x0.5 Signal #2 Info : 30M x 0.32mm x 0.25µm

Compound	RT#1	RT#2	Resp#1	Resp#2	ng/ml	ng/ml

System Monitoring Compounds						
4) S 2,4-DCAA	6.931	7.451	772.6E6	164.6E6	271.302	205.709
Target Compounds						
1) T Dalapon	2.418f	2.501	512.4E6	620.5E6	104.246	305.514 #
2) T 3,5-DICHL...	6.141	6.467	14312704	-2676088	3.432	N.D. #
3) T 4-Nitroph...	6.682f	7.027f	93350546	39754163	45.193	38.078
5) T DICAMBA	7.123	7.621	2339349	8061361	<MDL	1.705 #
6) T MCPP	7.287	7.727	22984101	80659207	3.156	43.842 #
7) T MCPA	7.443	7.936f	49282073	188.2E6	4.747	71.341 #
8) T DICHLORPROP	7.812	8.350	108.8E6	64779196	37.241	54.831 #
9) T 2,4-D	8.019	8.609f	156.2E6	20174890	47.628	15.633 #
10) T Pentachlo...	8.277	9.134	15532123	37158201	<MDL	1.505 #
11) T 2,4,5-TP ...	8.839	9.552f	3502913	62369389	<MDL	6.332 #
12) T 2,4,5-T	9.175f	9.932	146.1E6	93401114	8.845	10.148
13) T 2,4-DB	9.708	10.466	333.2E6	122.4E6	127.662	123.329
14) T DINOSEB	10.836	10.827f	39111577	112.6E6	3.420	16.481 #
15) T Picloram	10.626f	11.917	162.3E6	135.8E6	7.588	9.650 #
16) T DCPA	11.148	11.917f	148.8E6	135.8E6	7.471	10.051 #

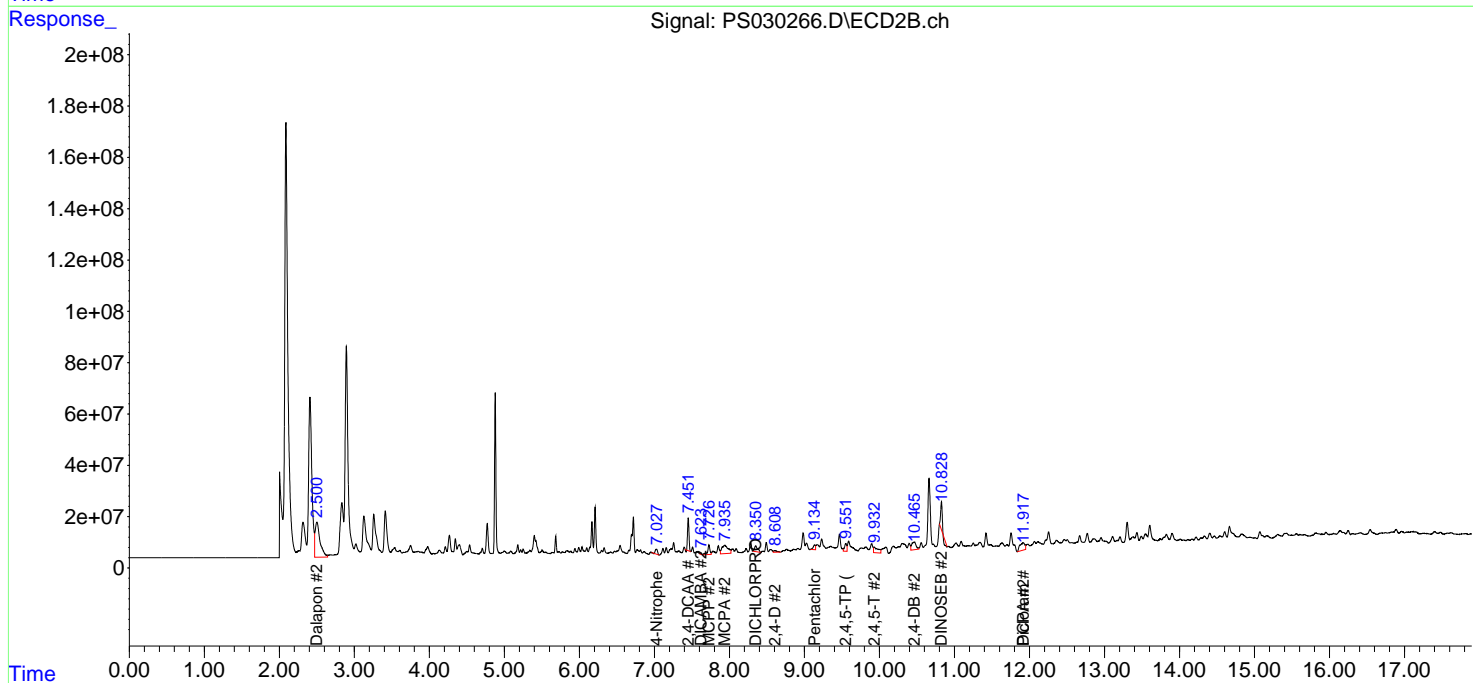
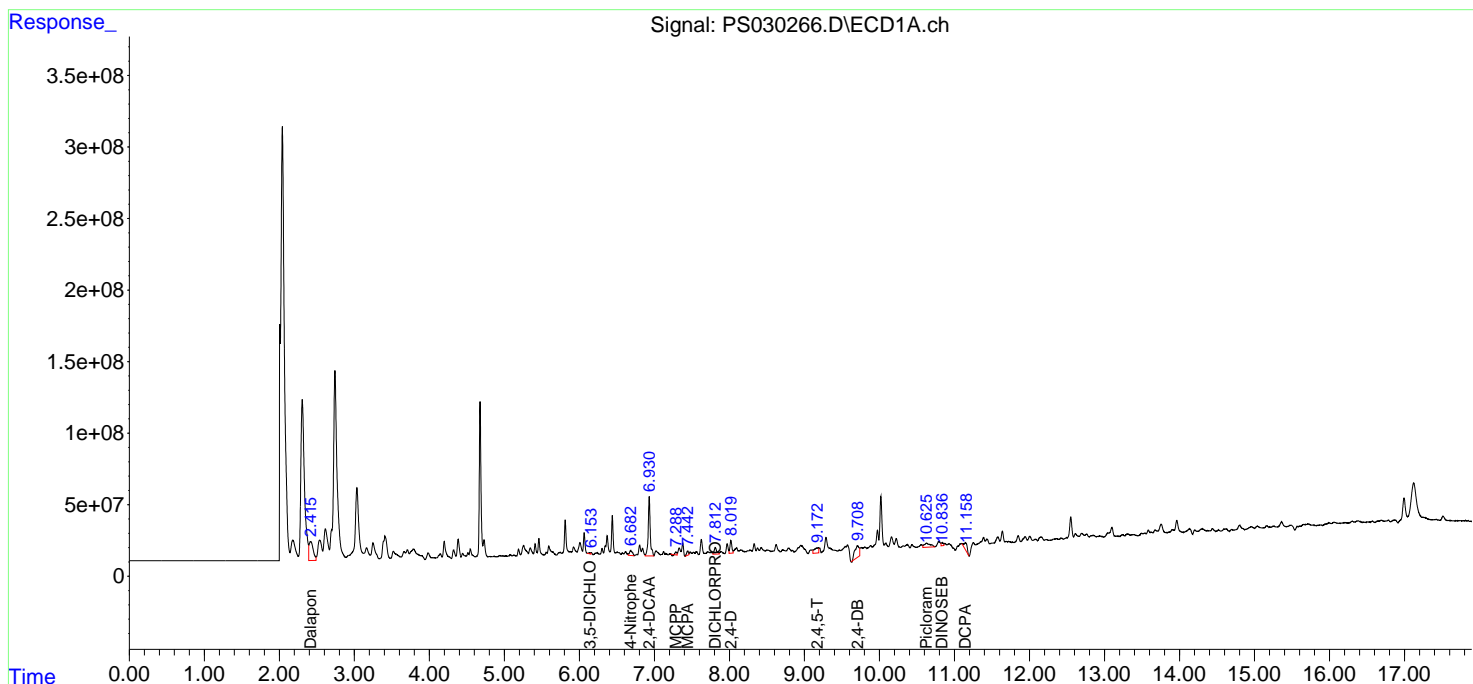
(f)=RT Delta > 1/2 Window (#)=Amounts differ by > 25% (m)=manual int.

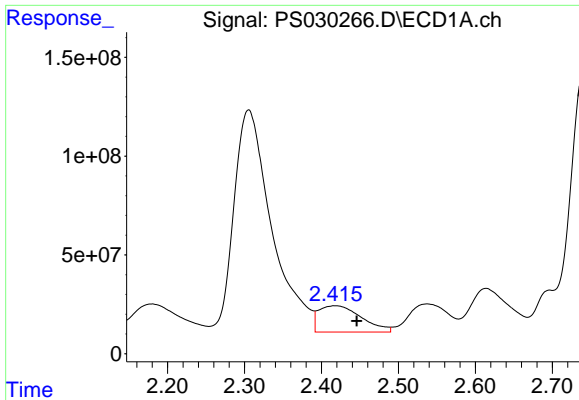
Data Path : Z:\pestpcbsrv\HPCHEM1\ECD_S\Data\PS051925\
 Data File : PS030266.D
 Signal(s) : Signal #1: ECD1A.ch Signal #2: ECD2B.ch
 Acq On : 19 May 2025 12:36
 Operator : AR\AJ
 Sample : Q2034-05
 Misc :
 ALS Vial : 8 Sample Multiplier: 1

Instrument :
 ECD_S
 ClientSampleId :
 L3-WC-2

Integration File signal 1: autoint1.e
 Integration File signal 2: autoint2.e
 Quant Time: May 20 05:36:55 2025
 Quant Method : Z:\pestpcbsrv\HPCHEM1\ECD_S\Method\PS051225.M
 Quant Title : 8080.M
 QLast Update : Mon May 12 14:29:24 2025
 Response via : Initial Calibration
 Integrator: ChemStation

Volume Inj. : 1 µl
 Signal #1 Phase : ZB-MR1 Signal #2 Phase: ZB-MR2
 Signal #1 Info : 30M x 0.32mm x0.5 Signal #2 Info : 30M x 0.32mm x 0.25µm

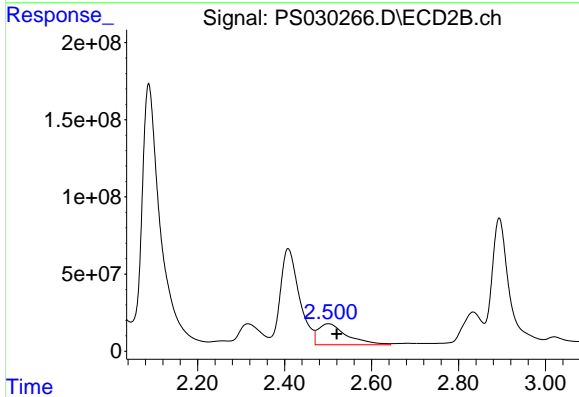




#1 Dalapon

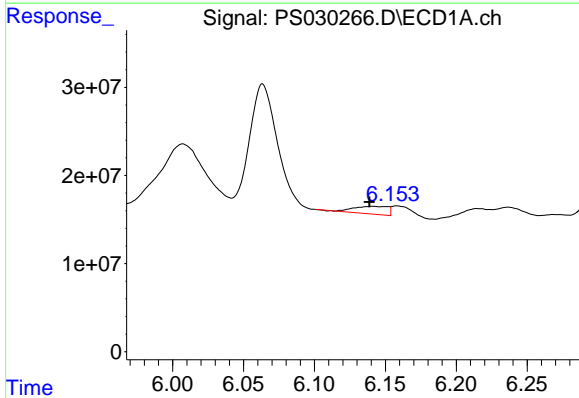
R.T.: 2.418 min
 Delta R.T.: -0.028 min
 Response: 512405767
 Conc: 104.25 ng/ml

Instrument :
 ECD_S
 ClientSampleId :
 L3-WC-2



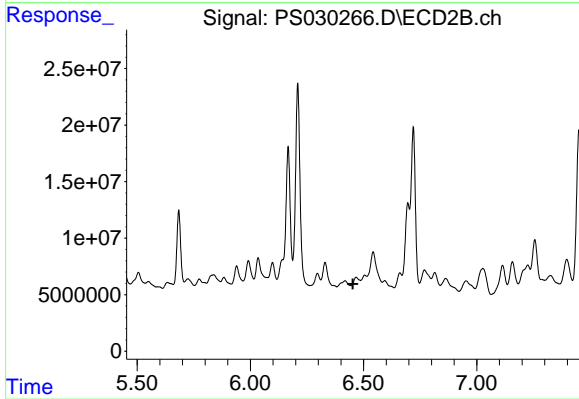
#1 Dalapon

R.T.: 2.501 min
 Delta R.T.: -0.020 min
 Response: 620514467
 Conc: 305.51 ng/ml



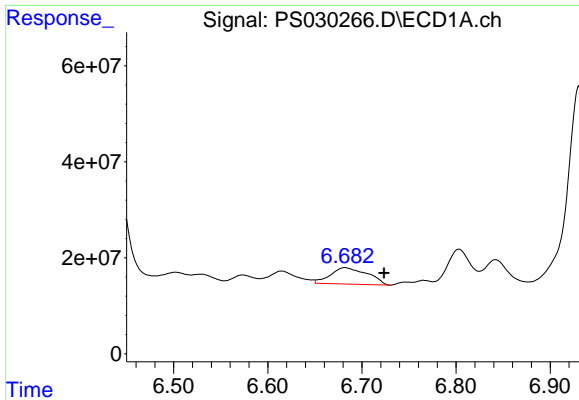
#2 3,5-DICHLOROBENZOIC ACID

R.T.: 6.141 min
 Delta R.T.: 0.002 min
 Response: 14312704
 Conc: 3.43 ng/ml



#2 3,5-DICHLOROBENZOIC ACID

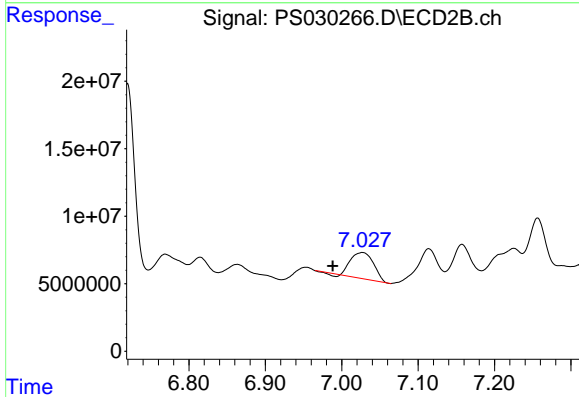
R.T.: 6.467 min
 Delta R.T.: 0.014 min
 Response: -2676088
 Conc: N.D.



#3 4-Nitrophenol

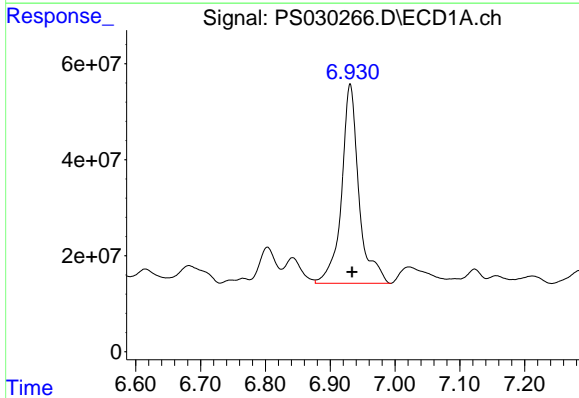
R.T.: 6.682 min
 Delta R.T.: -0.041 min
 Response: 93350546
 Conc: 45.19 ng/ml

Instrument :
 ECD_S
 ClientSampleId :
 L3-WC-2



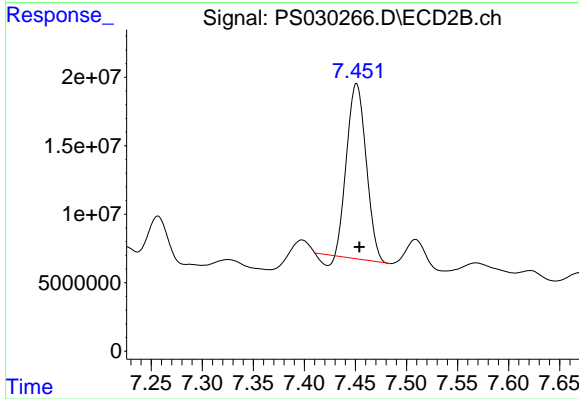
#3 4-Nitrophenol

R.T.: 7.027 min
 Delta R.T.: 0.038 min
 Response: 39754163
 Conc: 38.08 ng/ml



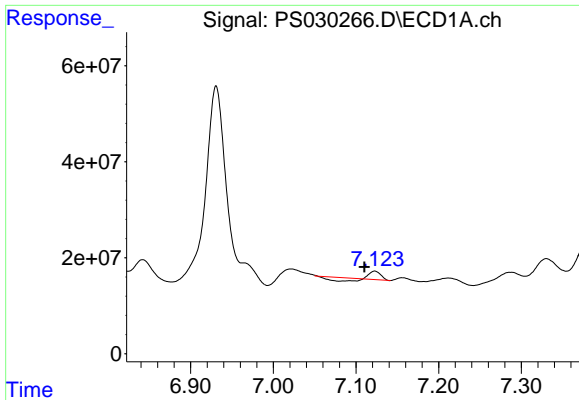
#4 2,4-DCAA

R.T.: 6.931 min
 Delta R.T.: -0.003 min
 Response: 772617334
 Conc: 271.30 ng/ml



#4 2,4-DCAA

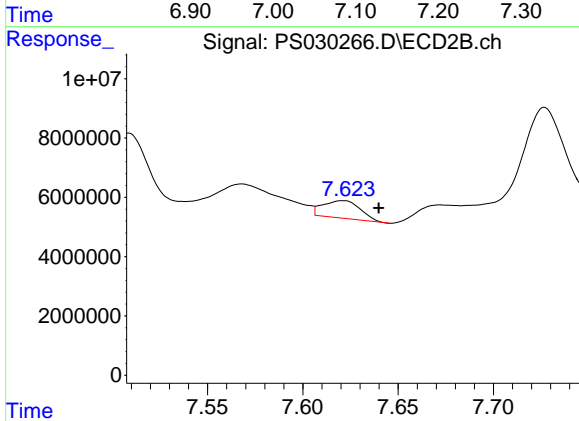
R.T.: 7.451 min
 Delta R.T.: -0.003 min
 Response: 164608912
 Conc: 205.71 ng/ml



#5 DICAMBA

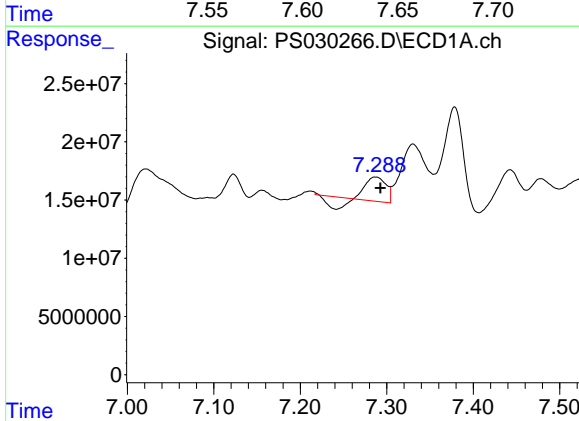
R.T.: 7.123 min
 Delta R.T.: 0.013 min
 Response: 2339349
 Conc: N.D.

Instrument :
 ECD_S
 ClientSampleId :
 L3-WC-2



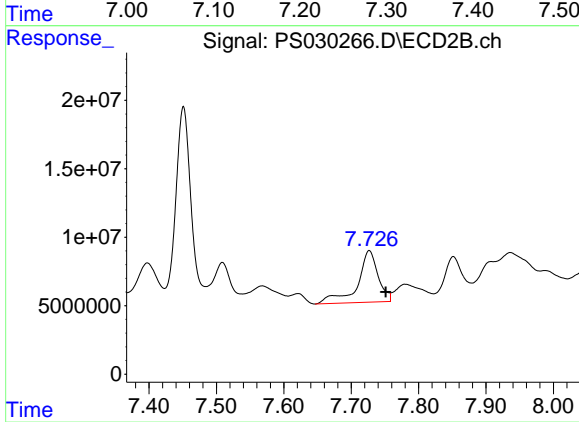
#5 DICAMBA

R.T.: 7.621 min
 Delta R.T.: -0.019 min
 Response: 8061361
 Conc: 1.71 ng/ml



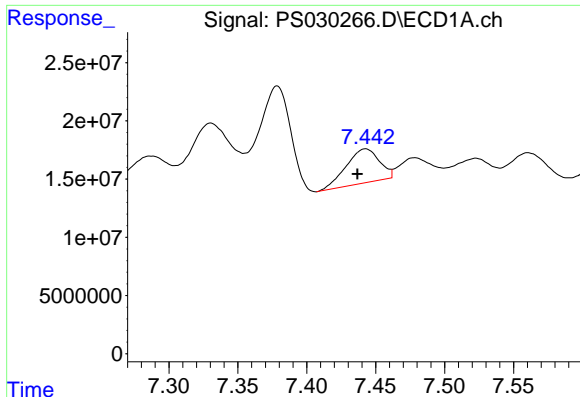
#6 MCPP

R.T.: 7.287 min
 Delta R.T.: -0.006 min
 Response: 22984101
 Conc: 3.16 ug/ml



#6 MCPP

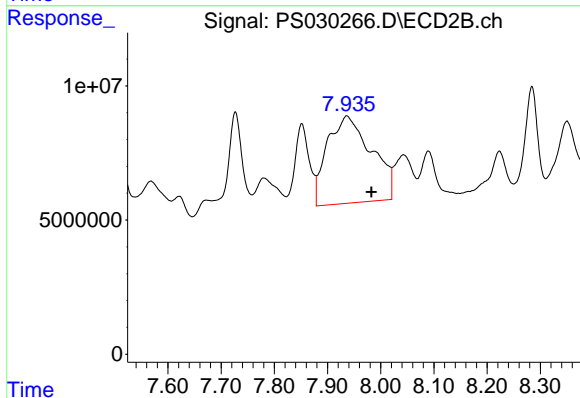
R.T.: 7.727 min
 Delta R.T.: -0.025 min
 Response: 80659207
 Conc: 43.84 ug/ml



#7 MCPA

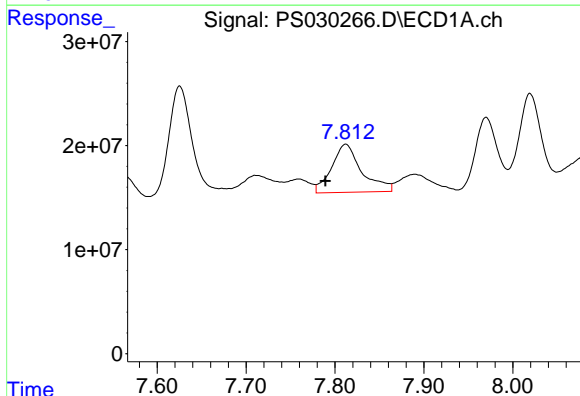
R.T.: 7.443 min
 Delta R.T.: 0.006 min
 Response: 49282073
 Conc: 4.75 ug/ml

Instrument :
 ECD_S
 ClientSampleId :
 L3-WC-2



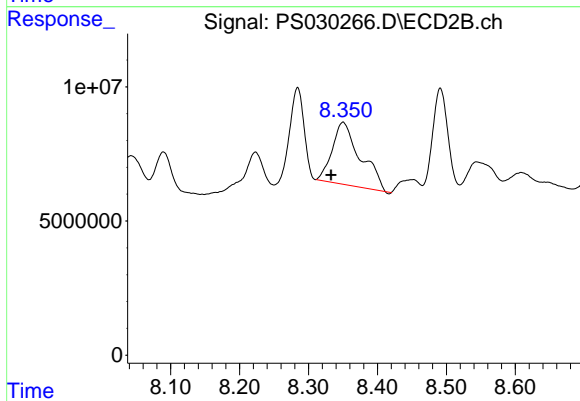
#7 MCPA

R.T.: 7.936 min
 Delta R.T.: -0.046 min
 Response: 188176304
 Conc: 71.34 ug/ml



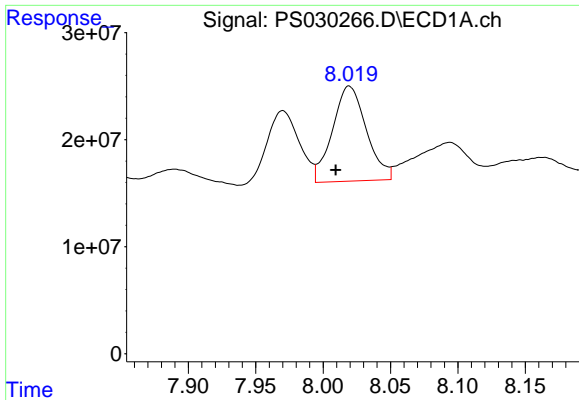
#8 DICHLORPROP

R.T.: 7.812 min
 Delta R.T.: 0.023 min
 Response: 108793432
 Conc: 37.24 ng/ml



#8 DICHLORPROP

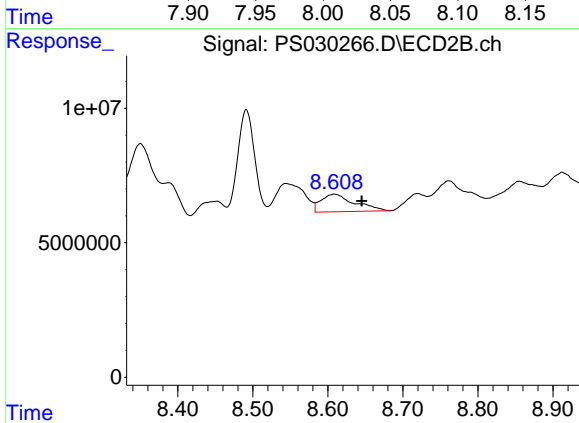
R.T.: 8.350 min
 Delta R.T.: 0.017 min
 Response: 64779196
 Conc: 54.83 ng/ml



#9 2,4-D

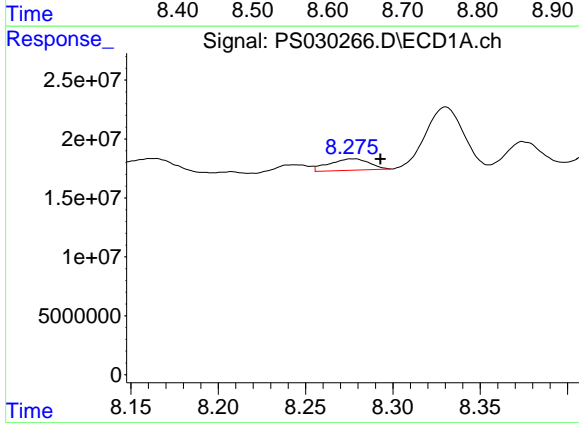
R.T.: 8.019 min
 Delta R.T.: 0.010 min
 Response: 156169722
 Conc: 47.63 ng/ml

Instrument :
 ECD_S
 ClientSampleId :
 L3-WC-2



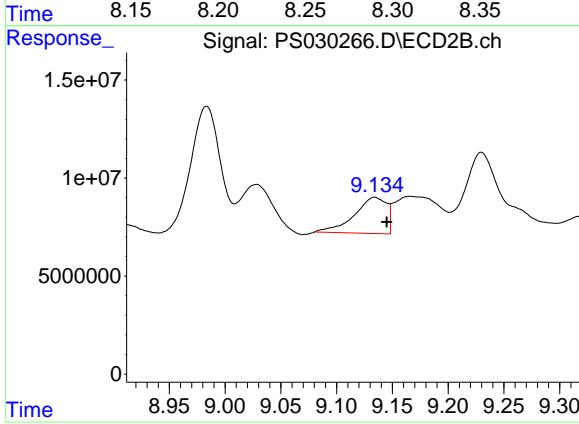
#9 2,4-D

R.T.: 8.609 min
 Delta R.T.: -0.037 min
 Response: 20174890
 Conc: 15.63 ng/ml



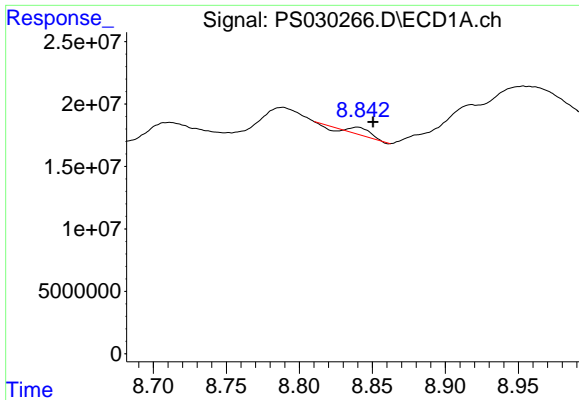
#10 Pentachlorophenol

R.T.: 8.277 min
 Delta R.T.: -0.016 min
 Response: 15532123
 Conc: N.D.



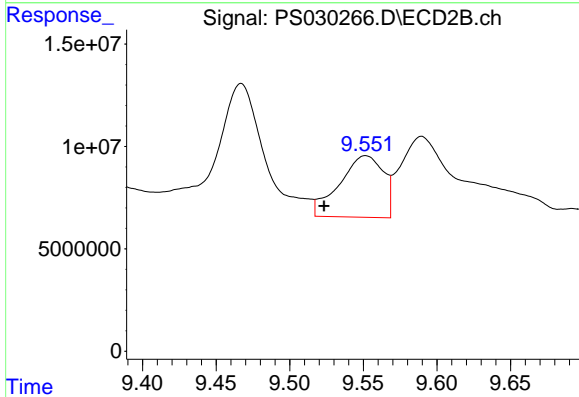
#10 Pentachlorophenol

R.T.: 9.134 min
 Delta R.T.: -0.011 min
 Response: 37158201
 Conc: 1.51 ng/ml

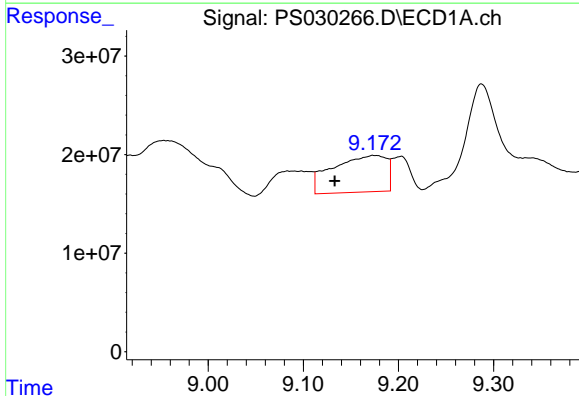


#11 2,4,5-TP (SILVEX)
 R.T.: 8.839 min
 Delta R.T.: -0.011 min
 Response: 3502913
 Conc: N.D.

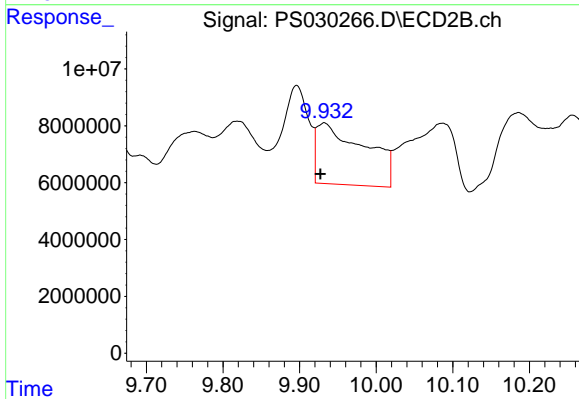
Instrument :
 ECD_S
 ClientSampleId :
 L3-WC-2



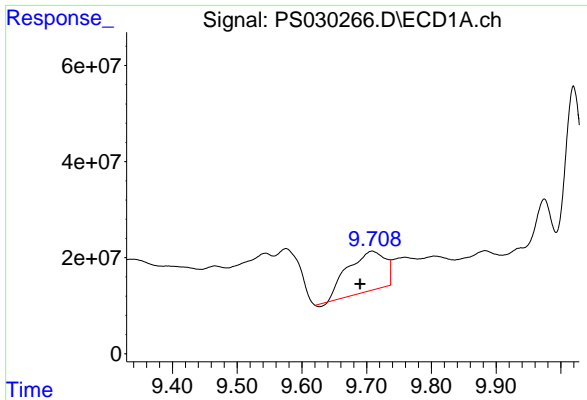
#11 2,4,5-TP (SILVEX)
 R.T.: 9.552 min
 Delta R.T.: 0.028 min
 Response: 62369389
 Conc: 6.33 ng/ml



#12 2,4,5-T
 R.T.: 9.175 min
 Delta R.T.: 0.042 min
 Response: 146073063
 Conc: 8.84 ng/ml



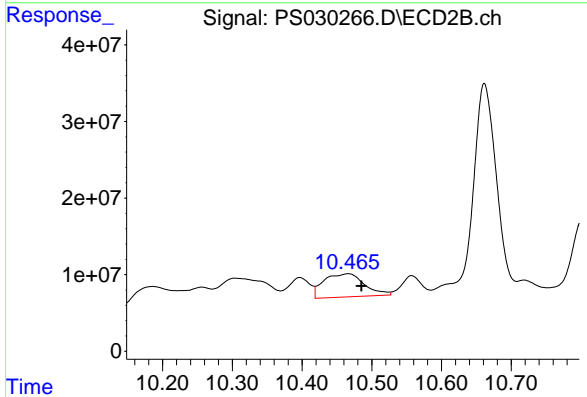
#12 2,4,5-T
 R.T.: 9.932 min
 Delta R.T.: 0.005 min
 Response: 93401114
 Conc: 10.15 ng/ml



#13 2,4-DB

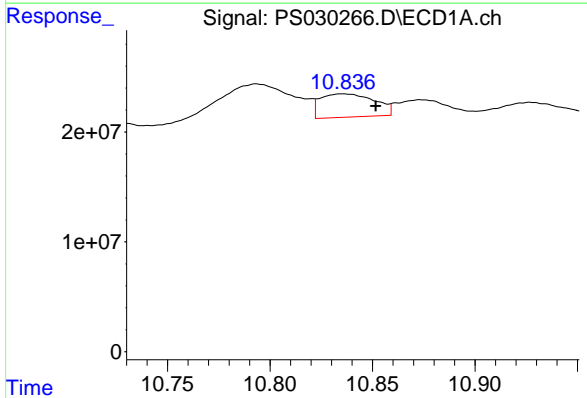
R.T.: 9.708 min
 Delta R.T.: 0.018 min
 Response: 333167739
 Conc: 127.66 ng/ml

Instrument :
 ECD_S
 ClientSampleId :
 L3-WC-2



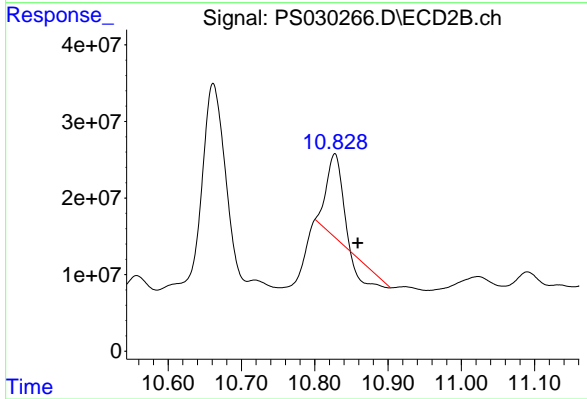
#13 2,4-DB

R.T.: 10.466 min
 Delta R.T.: -0.019 min
 Response: 122387984
 Conc: 123.33 ng/ml



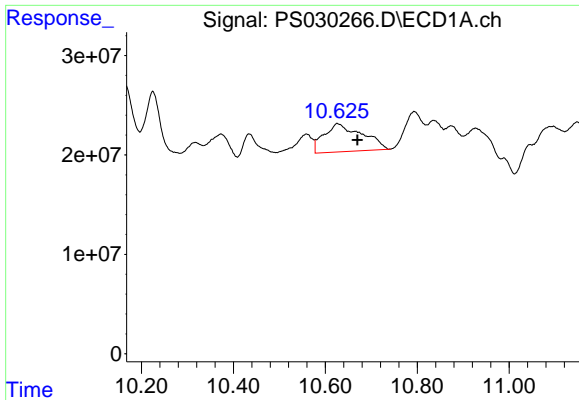
#14 DINOSEB

R.T.: 10.836 min
 Delta R.T.: -0.016 min
 Response: 39111577
 Conc: 3.42 ng/ml



#14 DINOSEB

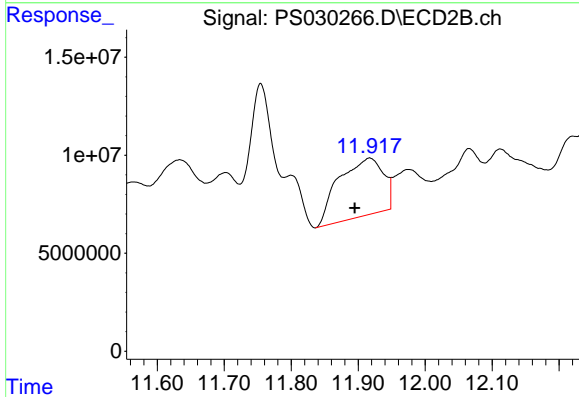
R.T.: 10.827 min
 Delta R.T.: -0.031 min
 Response: 112598074
 Conc: 16.48 ng/ml



#15 Picloram

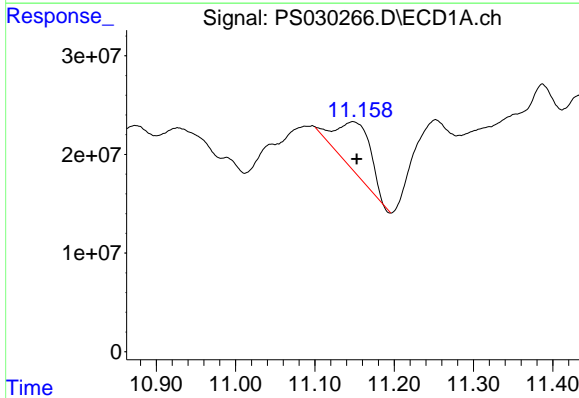
R.T.: 10.626 min
 Delta R.T.: -0.044 min
 Response: 162276102
 Conc: 7.59 ng/ml

Instrument :
 ECD_S
 ClientSampleId :
 L3-WC-2



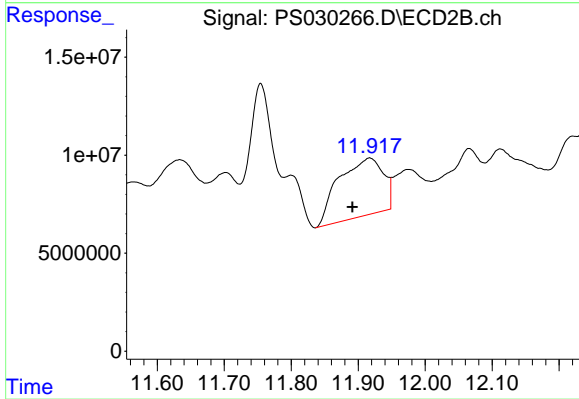
#15 Picloram

R.T.: 11.917 min
 Delta R.T.: 0.022 min
 Response: 135799654
 Conc: 9.65 ng/ml



#16 DCPA

R.T.: 11.148 min
 Delta R.T.: -0.005 min
 Response: 148750212
 Conc: 7.47 ng/ml



#16 DCPA

R.T.: 11.917 min
 Delta R.T.: 0.025 min
 Response: 135799654
 Conc: 10.05 ng/ml