

Data Path : Z:\pestpcbsrv\HPCHEM1\ECD_S\Data\PS051925\
 Data File : PS030267.D
 Signal(s) : Signal #1: ECD1A.ch Signal #2: ECD2B.ch
 Acq On : 19 May 2025 13:00
 Operator : AR\AJ
 Sample : Q2034-09
 Misc :
 ALS Vial : 9 Sample Multiplier: 1

Instrument :
 ECD_S
 ClientSampleId :
 L3-WC-3

Integration File signal 1: autoint1.e
 Integration File signal 2: autoint2.e
 Quant Time: May 20 05:37:24 2025
 Quant Method : Z:\pestpcbsrv\HPCHEM1\ECD_S\Method\PS051225.M
 Quant Title : 8080.M
 QLast Update : Mon May 12 14:29:24 2025
 Response via : Initial Calibration
 Integrator: ChemStation

Volume Inj. : 1 µl
 Signal #1 Phase : ZB-MR2 Signal #2 Phase: ZB-MR2
 Signal #1 Info : 30M x 0.32mm x0.5 Signal #2 Info : 30M x 0.32mm x 0.25µm

Compound	RT#1	RT#2	Resp#1	Resp#2	ng/ml	ng/ml

System Monitoring Compounds						
4) S 2,4-DCAA	6.931	7.451	674.9E6	101.9E6	236.976	127.293 #
Target Compounds						
1) T Dalapon	2.416f	2.504	593.7E6	758.8E6	120.777	373.614 #
2) T 3,5-DICHL...	6.142	6.481f	29492305	-5440579	7.072	N.D. #
3) T 4-Nitroph...	6.752f	6.956f	9764409	11377958	4.727	10.898 #
5) T DICAMBA	7.123	7.621	6676139	8049265	<MDL	1.702 #
6) T MCPP	7.287	7.730	45212319	31285198	6.208	17.005 #
7) T MCPA	7.442	7.952f	50904600	167.5E6	4.904	63.506 #
8) T DICHLORPROP	7.815f	8.348	70301706	41610264	24.065	35.220 #
9) T 2,4-D	7.970f	8.650	307.6E6	10091213	93.821	7.820 #
10) T Pentachlo...	8.285	9.140	1007.7E6	553.5E6	24.881	22.424
11) T 2,4,5-TP ...	8.844	9.551f	8439636	77525435	<MDL	7.870 #
12) T 2,4,5-T	9.153	9.895f	106.5E6	89052958	6.450	9.676 #
13) T 2,4-DB	9.709	10.467	298.5E6	94293106	114.364	95.018
14) T DINOSEB	10.875	10.826f	16907426	117.8E6	1.478	17.249 #
15) T Picloram	10.625f	11.918	122.0E6	69239210	5.703	4.920
16) T DCPA	0.000	11.871	0	31562844	N.D.	2.336

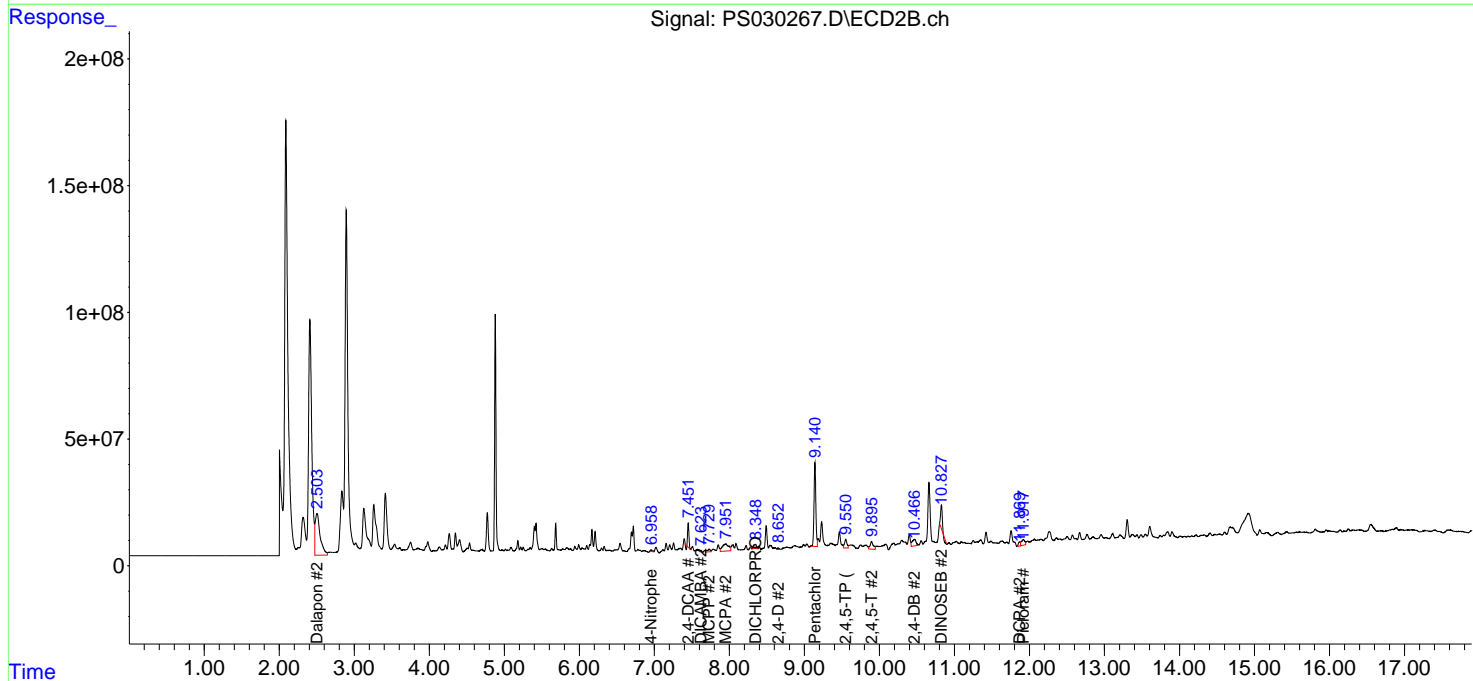
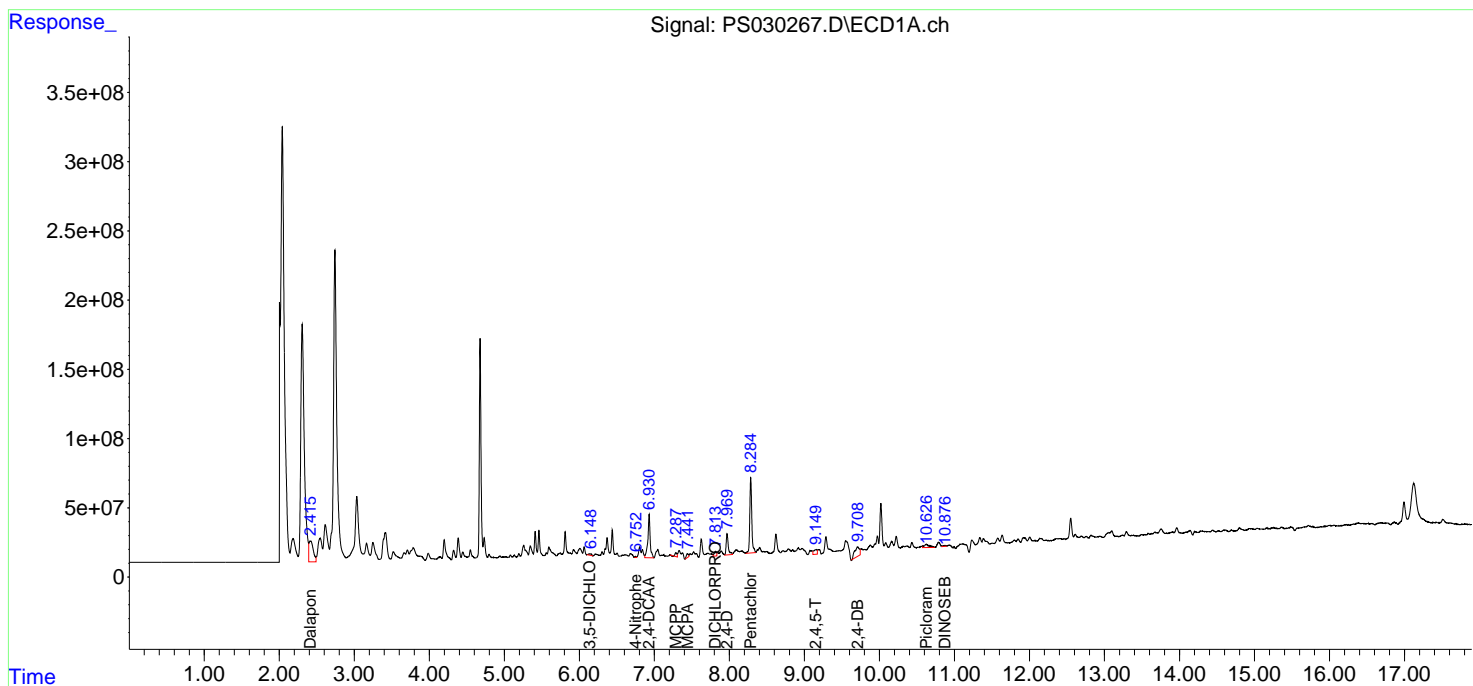
(f)=RT Delta > 1/2 Window (#)=Amounts differ by > 25% (m)=manual int.

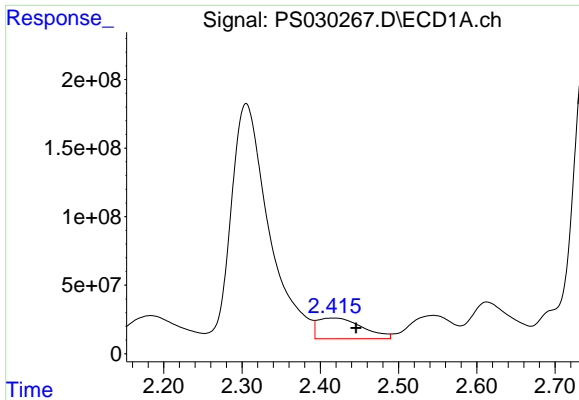
Data Path : Z:\pestpcbsrv\HPCHEM1\ECD_S\Data\PS051925\
 Data File : PS030267.D
 Signal(s) : Signal #1: ECD1A.ch Signal #2: ECD2B.ch
 Acq On : 19 May 2025 13:00
 Operator : AR\AJ
 Sample : Q2034-09
 Misc :
 ALS Vial : 9 Sample Multiplier: 1

Instrument :
 ECD_S
 ClientSampleId :
 L3-WC-3

Integration File signal 1: autoint1.e
 Integration File signal 2: autoint2.e
 Quant Time: May 20 05:37:24 2025
 Quant Method : Z:\pestpcbsrv\HPCHEM1\ECD_S\Method\PS051225.M
 Quant Title : 8080.M
 QLast Update : Mon May 12 14:29:24 2025
 Response via : Initial Calibration
 Integrator: ChemStation

Volume Inj. : 1 µl
 Signal #1 Phase : ZB-MR1 Signal #2 Phase: ZB-MR2
 Signal #1 Info : 30M x 0.32mm x0.5 Signal #2 Info : 30M x 0.32mm x 0.25µm

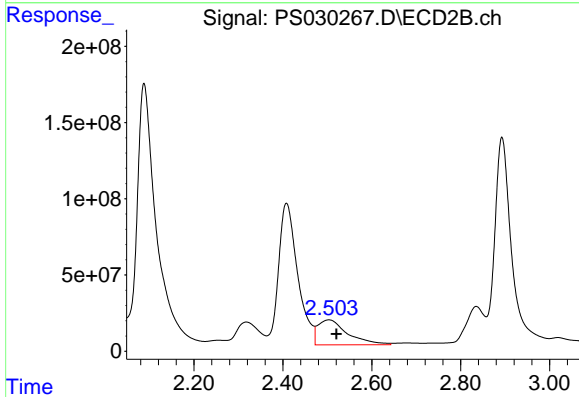




#1 Dalapon

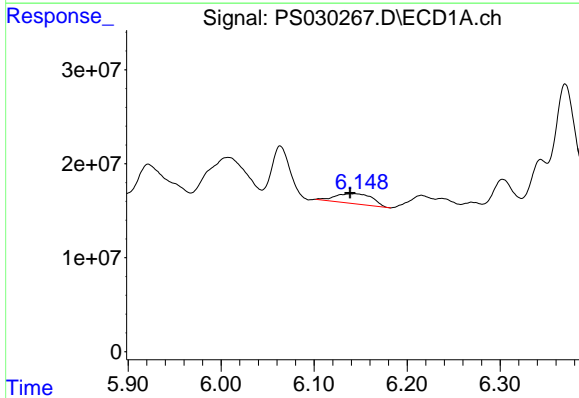
R.T.: 2.416 min
 Delta R.T.: -0.030 min
 Response: 593664454
 Conc: 120.78 ng/ml

Instrument :
 ECD_S
 ClientSampleId :
 L3-WC-3



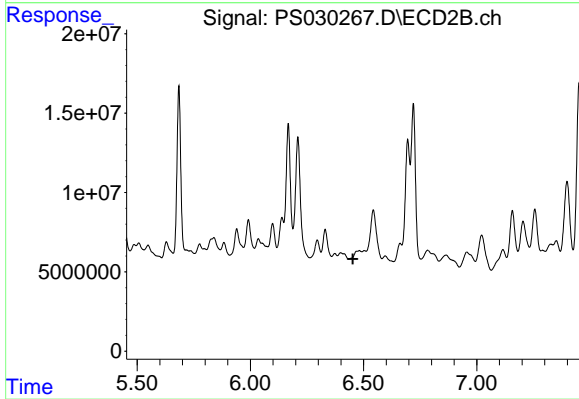
#1 Dalapon

R.T.: 2.504 min
 Delta R.T.: -0.017 min
 Response: 758829456
 Conc: 373.61 ng/ml



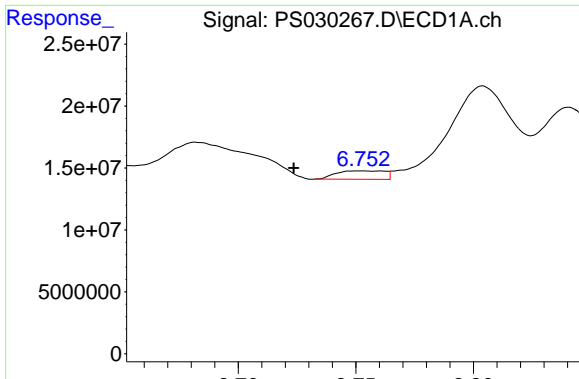
#2 3,5-DICHLOROBENZOIC ACID

R.T.: 6.142 min
 Delta R.T.: 0.004 min
 Response: 29492305
 Conc: 7.07 ng/ml



#2 3,5-DICHLOROBENZOIC ACID

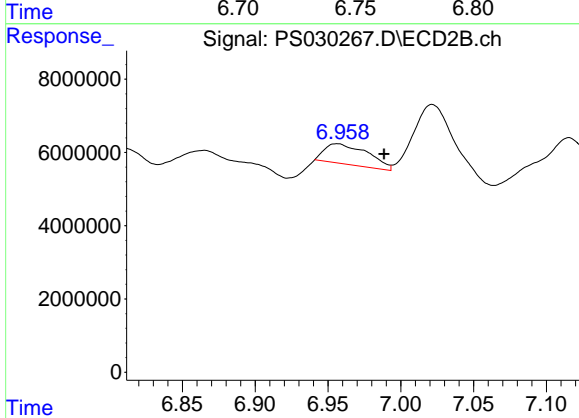
R.T.: 6.481 min
 Delta R.T.: 0.028 min
 Response: -5440579
 Conc: N.D.



#3 4-Nitrophenol

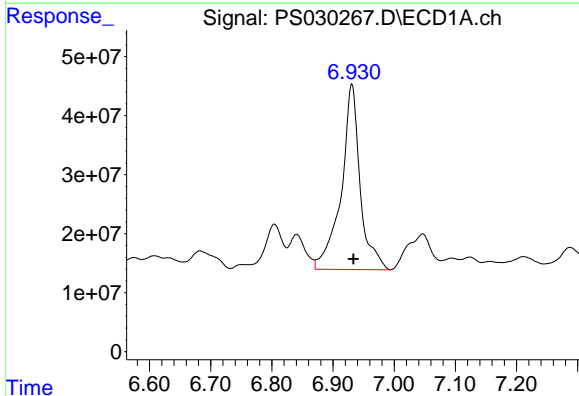
R.T.: 6.752 min
 Delta R.T.: 0.029 min
 Response: 9764409
 Conc: 4.73 ng/ml

Instrument :
 ECD_S
 ClientSampleId :
 L3-WC-3



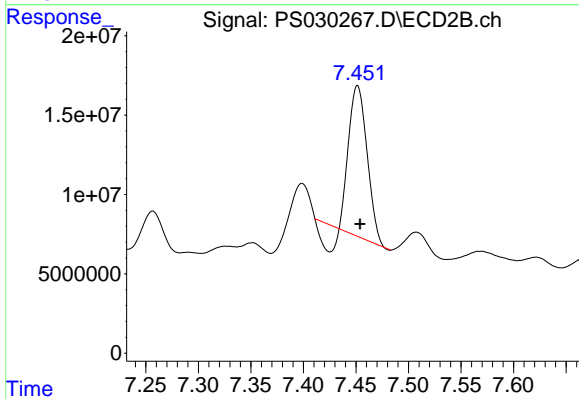
#3 4-Nitrophenol

R.T.: 6.956 min
 Delta R.T.: -0.032 min
 Response: 11377958
 Conc: 10.90 ng/ml



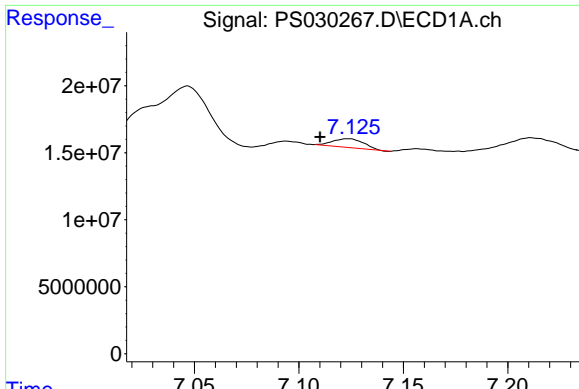
#4 2,4-DCAA

R.T.: 6.931 min
 Delta R.T.: -0.003 min
 Response: 674861002
 Conc: 236.98 ng/ml



#4 2,4-DCAA

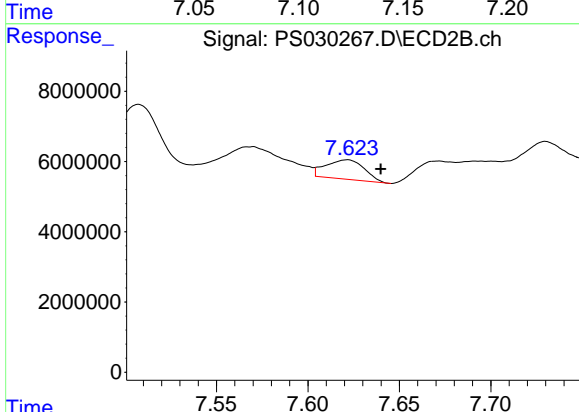
R.T.: 7.451 min
 Delta R.T.: -0.002 min
 Response: 101860171
 Conc: 127.29 ng/ml



#5 DICAMBA

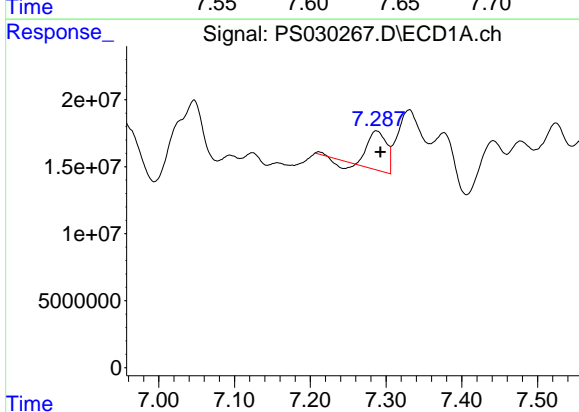
R.T.: 7.123 min
 Delta R.T.: 0.013 min
 Response: 6676139
 Conc: N.D.

Instrument :
 ECD_S
 ClientSampleId :
 L3-WC-3



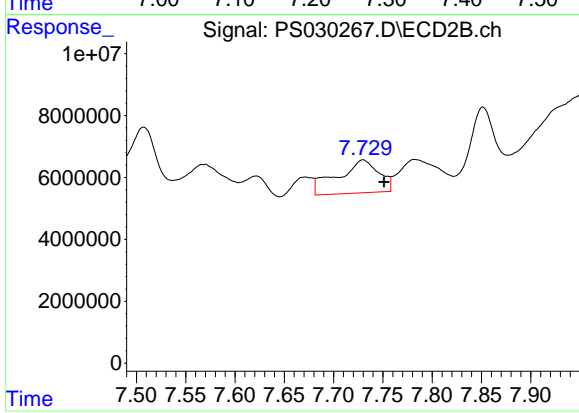
#5 DICAMBA

R.T.: 7.621 min
 Delta R.T.: -0.019 min
 Response: 8049265
 Conc: 1.70 ng/ml



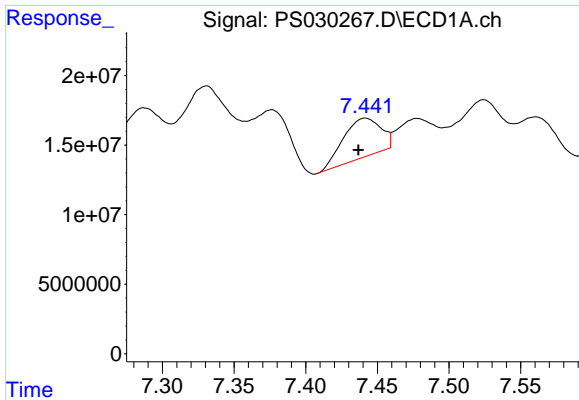
#6 MCP

R.T.: 7.287 min
 Delta R.T.: -0.005 min
 Response: 45212319
 Conc: 6.21 ug/ml



#6 MCP

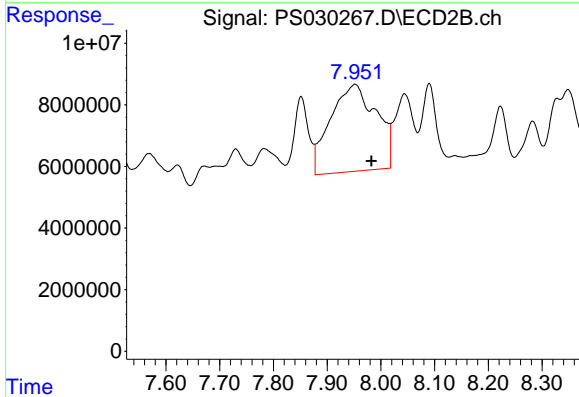
R.T.: 7.730 min
 Delta R.T.: -0.021 min
 Response: 31285198
 Conc: 17.00 ug/ml



#7 MCPA

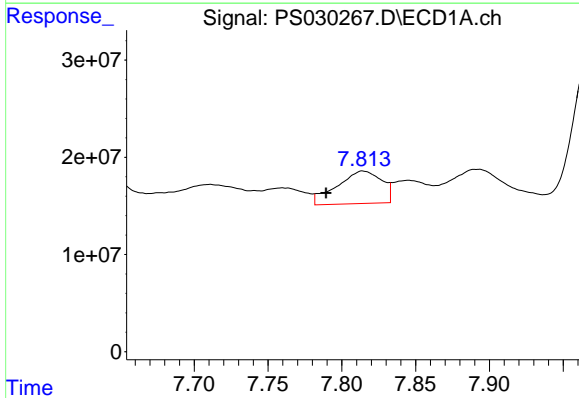
R.T.: 7.442 min
 Delta R.T.: 0.005 min
 Response: 50904600
 Conc: 4.90 ug/ml

Instrument :
 ECD_S
 ClientSampleId :
 L3-WC-3



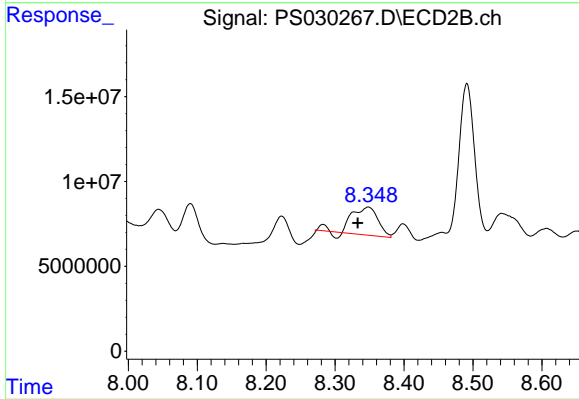
#7 MCPA

R.T.: 7.952 min
 Delta R.T.: -0.031 min
 Response: 167509032
 Conc: 63.51 ug/ml



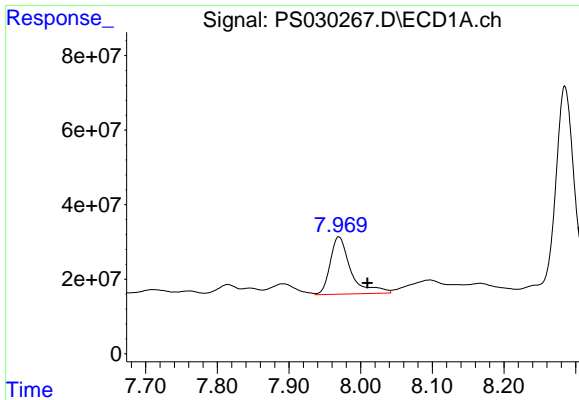
#8 DICHLORPROP

R.T.: 7.815 min
 Delta R.T.: 0.025 min
 Response: 70301706
 Conc: 24.06 ng/ml



#8 DICHLORPROP

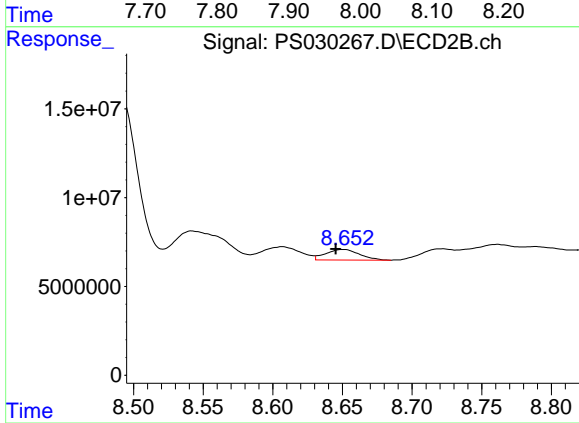
R.T.: 8.348 min
 Delta R.T.: 0.015 min
 Response: 41610264
 Conc: 35.22 ng/ml



#9 2,4-D

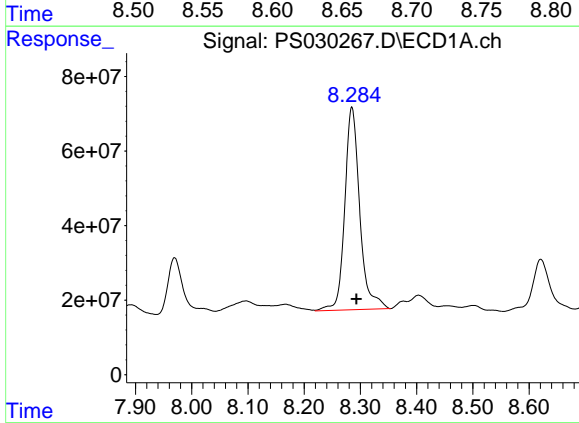
R.T.: 7.970 min
 Delta R.T.: -0.040 min
 Response: 307634276
 Conc: 93.82 ng/ml

Instrument :
 ECD_S
 ClientSampleId :
 L3-WC-3



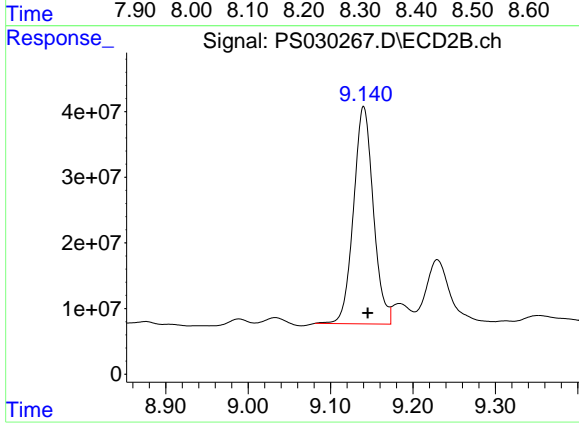
#9 2,4-D

R.T.: 8.650 min
 Delta R.T.: 0.005 min
 Response: 10091213
 Conc: 7.82 ng/ml



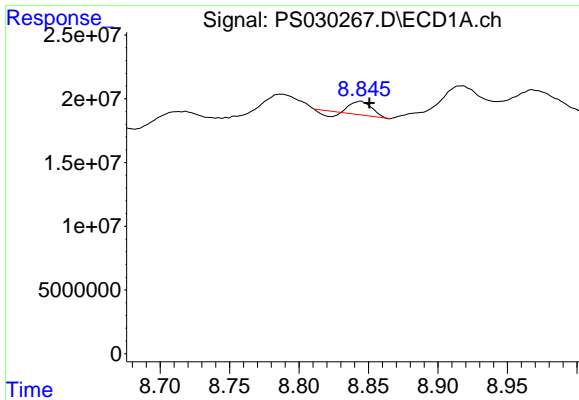
#10 Pentachlorophenol

R.T.: 8.285 min
 Delta R.T.: -0.008 min
 Response: 1007691649
 Conc: 24.88 ng/ml



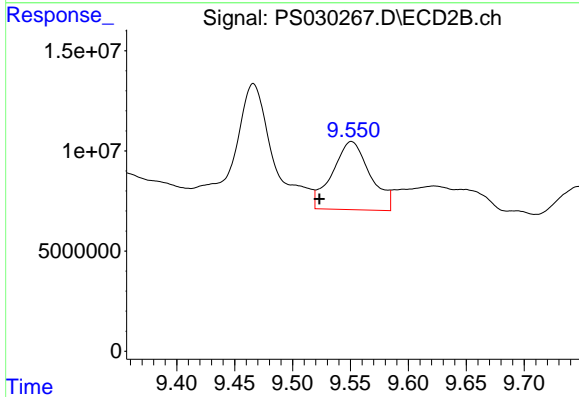
#10 Pentachlorophenol

R.T.: 9.140 min
 Delta R.T.: -0.005 min
 Response: 553543180
 Conc: 22.42 ng/ml

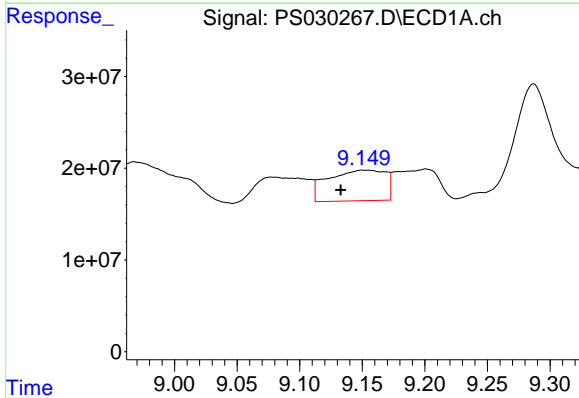


#11 2,4,5-TP (SILVEX)
 R.T.: 8.844 min
 Delta R.T.: -0.007 min
 Response: 8439636
 Conc: N.D.

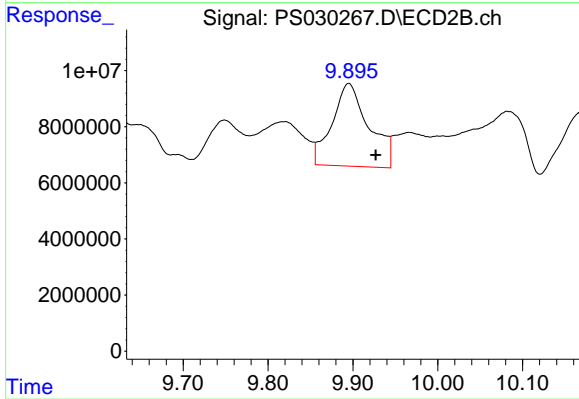
Instrument :
 ECD_S
 ClientSampleId :
 L3-WC-3



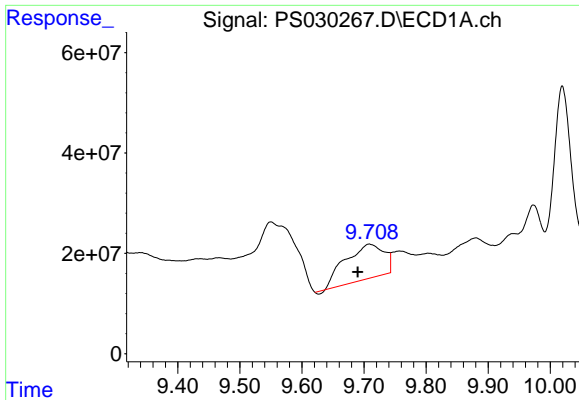
#11 2,4,5-TP (SILVEX)
 R.T.: 9.551 min
 Delta R.T.: 0.028 min
 Response: 77525435
 Conc: 7.87 ng/ml



#12 2,4,5-T
 R.T.: 9.153 min
 Delta R.T.: 0.020 min
 Response: 106522401
 Conc: 6.45 ng/ml



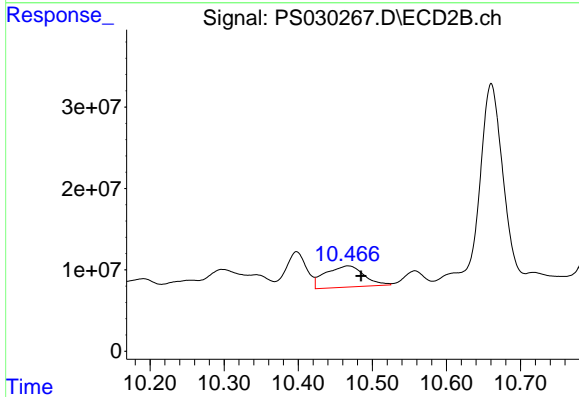
#12 2,4,5-T
 R.T.: 9.895 min
 Delta R.T.: -0.032 min
 Response: 89052958
 Conc: 9.68 ng/ml



#13 2,4-DB

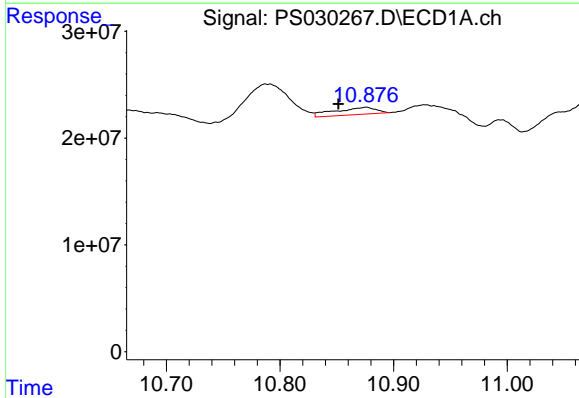
R.T.: 9.709 min
 Delta R.T.: 0.019 min
 Response: 298465101
 Conc: 114.36 ng/ml

Instrument :
 ECD_S
 ClientSampleId :
 L3-WC-3



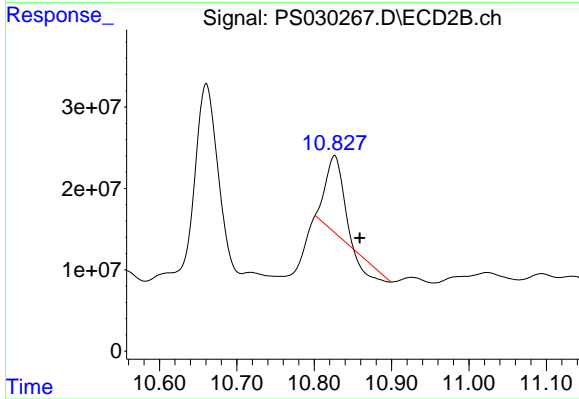
#13 2,4-DB

R.T.: 10.467 min
 Delta R.T.: -0.018 min
 Response: 94293106
 Conc: 95.02 ng/ml



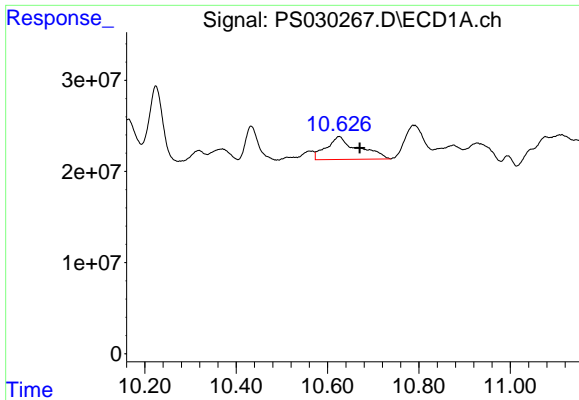
#14 DINOSEB

R.T.: 10.875 min
 Delta R.T.: 0.024 min
 Response: 16907426
 Conc: 1.48 ng/ml



#14 DINOSEB

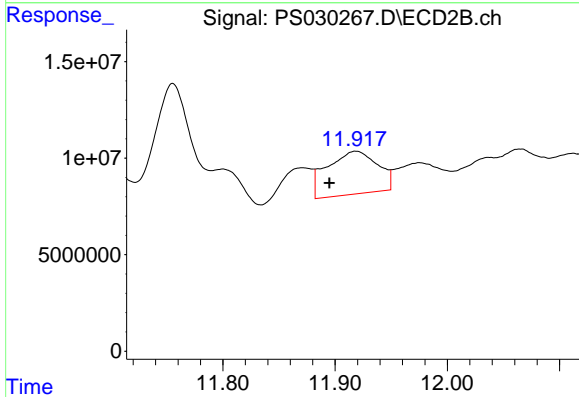
R.T.: 10.826 min
 Delta R.T.: -0.033 min
 Response: 117845344
 Conc: 17.25 ng/ml



#15 Picloram

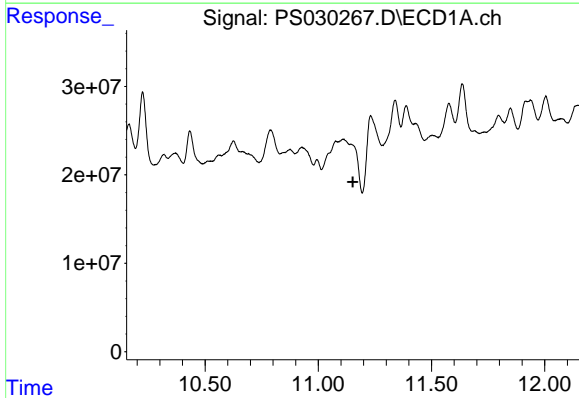
R.T.: 10.625 min
 Delta R.T.: -0.045 min
 Response: 121969944
 Conc: 5.70 ng/ml

Instrument :
 ECD_S
 ClientSampleId :
 L3-WC-3



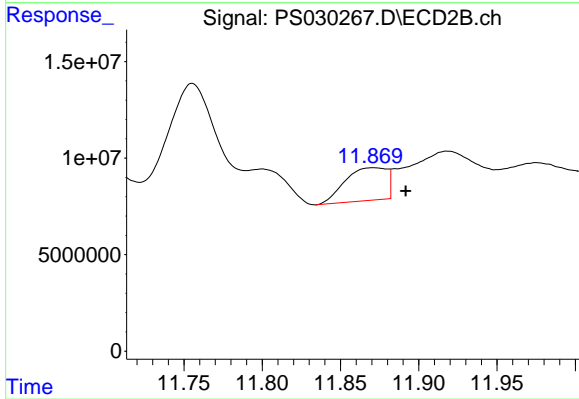
#15 Picloram

R.T.: 11.918 min
 Delta R.T.: 0.023 min
 Response: 69239210
 Conc: 4.92 ng/ml



#16 DCPA

R.T.: 0.000 min
 Exp R.T. : 11.153 min
 Response: 0
 Conc: N.D.



#16 DCPA

R.T.: 11.871 min
 Delta R.T.: -0.021 min
 Response: 31562844
 Conc: 2.34 ng/ml