

Data Path : Z:\pestpcbsrv\HPCHEM1\ECD_S\Data\PS051925\
 Data File : PS030270.D
 Signal(s) : Signal #1: ECD1A.ch Signal #2: ECD2B.ch
 Acq On : 19 May 2025 14:12
 Operator : AR\AJ
 Sample : Q2034-21
 Misc :
 ALS Vial : 12 Sample Multiplier: 1

Instrument :
 ECD_S
 ClientSampleId :
 L3-WC-6

Integration File signal 1: autoint1.e
 Integration File signal 2: autoint2.e
 Quant Time: May 20 05:38:48 2025
 Quant Method : Z:\pestpcbsrv\HPCHEM1\ECD_S\Method\PS051225.M
 Quant Title : 8080.M
 QLast Update : Mon May 12 14:29:24 2025
 Response via : Initial Calibration
 Integrator: ChemStation

Volume Inj. : 1 µl
 Signal #1 Phase : ZB-MR2 Signal #2 Phase: ZB-MR2
 Signal #1 Info : 30M x 0.32mm x0.5 Signal #2 Info : 30M x 0.32mm x 0.25µm

| Compound | RT#1 | RT#2 | Resp#1 | Resp#2 | ng/ml | ng/ml |
|-----------------------------|---------|---------|----------|----------|---------|-----------|
| ----- | | | | | | |
| System Monitoring Compounds | | | | | | |
| 4) S 2,4-DCAA | 6.929 | 7.451 | 850.2E6 | 166.7E6 | 298.528 | 208.279 # |
| Target Compounds | | | | | | |
| 2) T 3,5-DICHL... | 6.128 | 6.501f | 53449548 | 6533406 | 12.816 | 5.604 # |
| 3) T 4-Nitroph... | 6.755f | 6.955f | 13218704 | 21871730 | 6.399 | 20.949 # |
| 5) T DICAMBA | 7.125 | 7.662 | 33156231 | 9440474 | 2.869 | 1.997 # |
| 6) T MCPP | 7.286 | 7.729 | 141.8E6 | 37291600 | 19.466 | 20.270 |
| 7) T MCPA | 7.442 | 7.955f | 59041047 | 246.8E6 | 5.687 | 93.558 # |
| 8) T DICHLORPROP | 7.765 | 8.325 | 25938815 | 34573064 | 8.879 | 29.264 # |
| 9) T 2,4-D | 7.969f | 8.650 | 438.6E6 | 10762041 | 133.752 | 8.339 # |
| 10) T Pentachlo... | 8.274 | 9.183f | 372.9E6 | 36802302 | 9.206 | 1.491 # |
| 11) T 2,4,5-TP ... | 8.846 | 9.507 | 83899248 | 95911373 | 5.180 | 9.737 # |
| 12) T 2,4,5-T | 9.156 | 9.892f | 125.1E6 | 117.8E6 | 7.577 | 12.797 # |
| 13) T 2,4-DB | 0.000 | 10.495 | 0 | 133.2E6 | N.D. | 134.220 |
| 14) T DINOSEB | 10.878f | 0.000 | 35336226 | 0 | 3.090 | N.D. # |
| 15) T Picloram | 10.698f | 11.920 | 69940461 | 20535771 | 3.270 | 1.459 # |
| 16) T DCPA | 11.160 | 11.920f | 92554296 | 20535771 | 4.648 | 1.520 # |
| ----- | | | | | | |

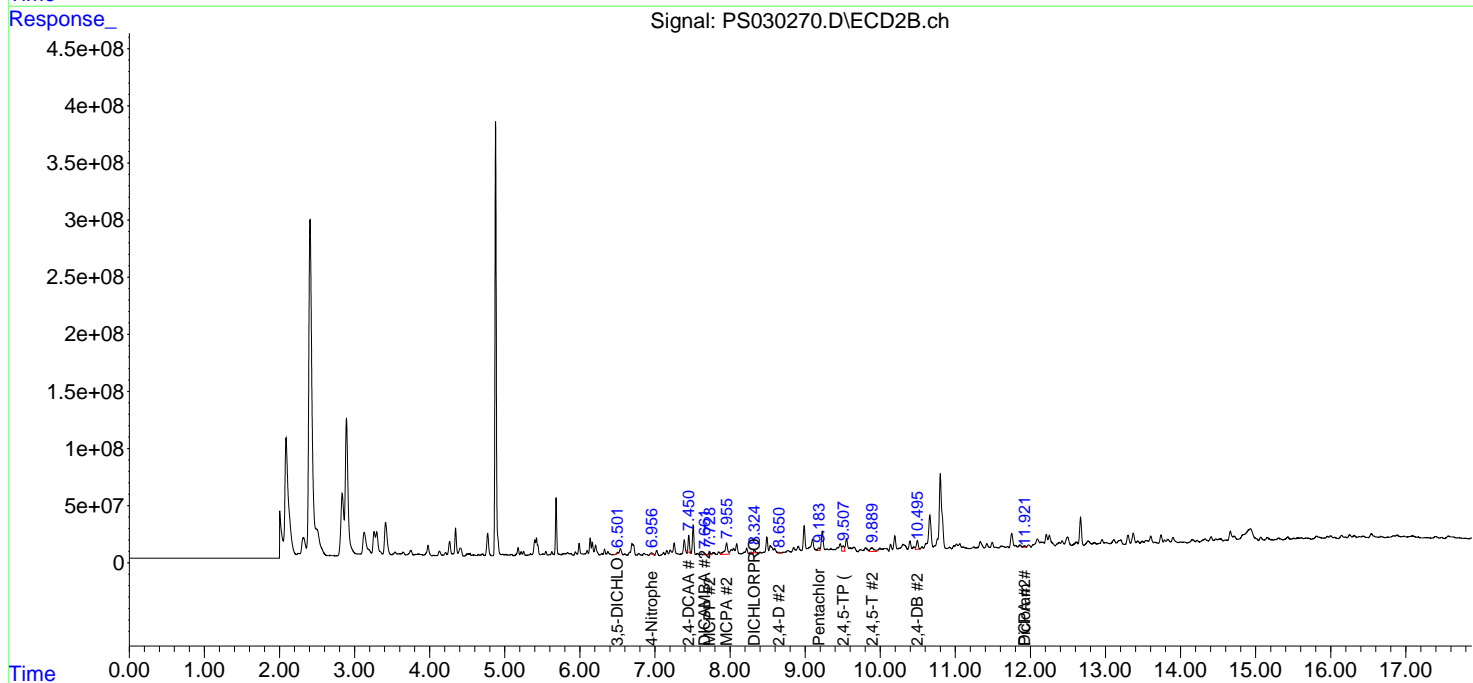
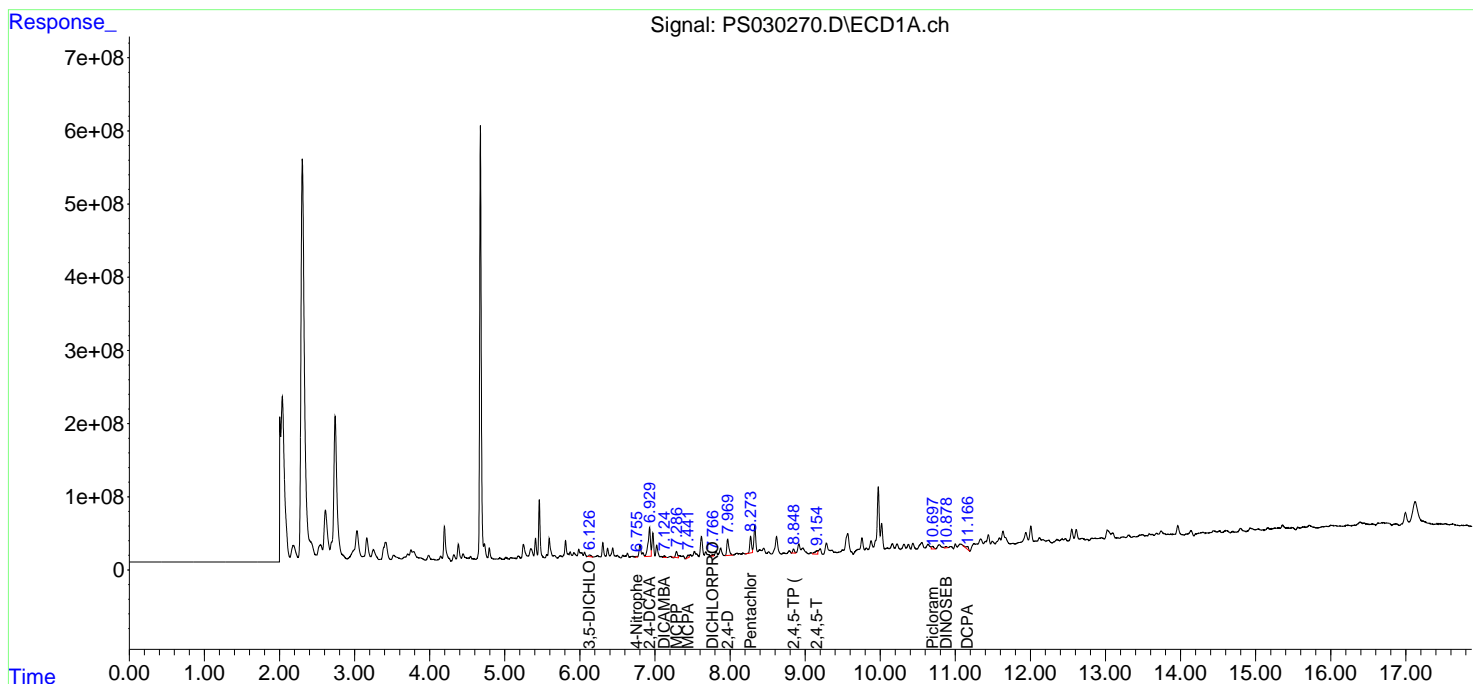
(f)=RT Delta > 1/2 Window (#)=Amounts differ by > 25% (m)=manual int.

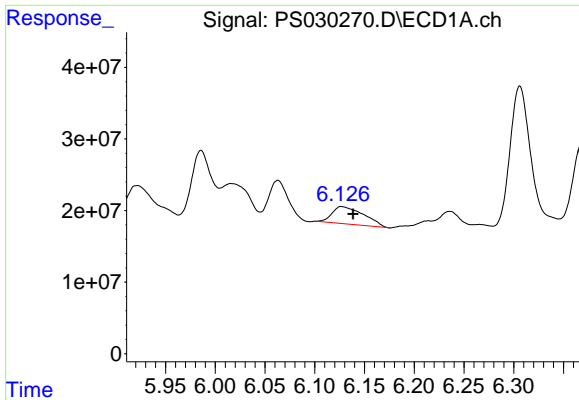
Data Path : Z:\pestpcbsrv\HPCHEM1\ECD_S\Data\PS051925\
 Data File : PS030270.D
 Signal(s) : Signal #1: ECD1A.ch Signal #2: ECD2B.ch
 Acq On : 19 May 2025 14:12
 Operator : AR\AJ
 Sample : Q2034-21
 Misc :
 ALS Vial : 12 Sample Multiplier: 1

Instrument :
 ECD_S
 ClientSampleId :
 L3-WC-6

Integration File signal 1: autoint1.e
 Integration File signal 2: autoint2.e
 Quant Time: May 20 05:38:48 2025
 Quant Method : Z:\pestpcbsrv\HPCHEM1\ECD_S\Method\PS051225.M
 Quant Title : 8080.M
 QLast Update : Mon May 12 14:29:24 2025
 Response via : Initial Calibration
 Integrator: ChemStation

Volume Inj. : 1 µl
 Signal #1 Phase : ZB-MR1 Signal #2 Phase: ZB-MR2
 Signal #1 Info : 30M x 0.32mm x0.5 Signal #2 Info : 30M x 0.32mm x 0.25µm

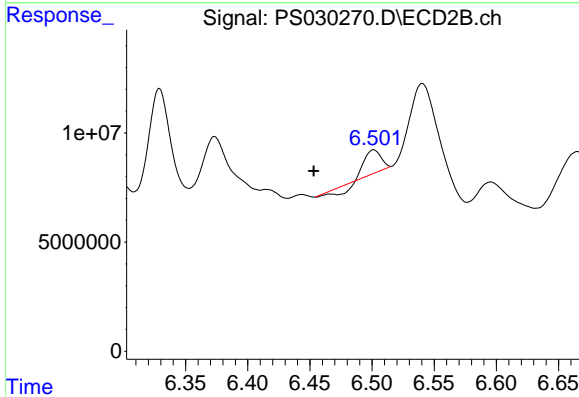




#2 3,5-DICHLORO BENZOIC ACID

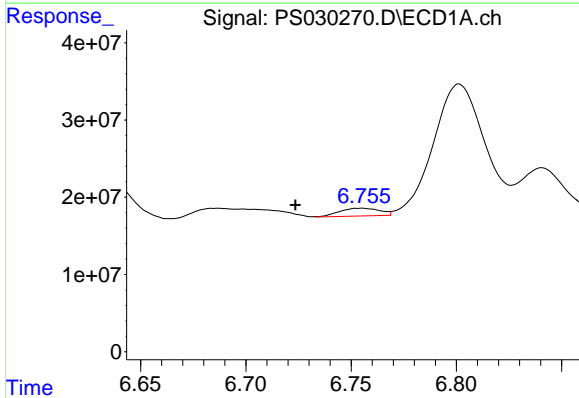
R.T.: 6.128 min
 Delta R.T.: -0.011 min
 Response: 53449548
 Conc: 12.82 ng/ml

Instrument :
 ECD_S
 ClientSampleId :
 L3-WC-6



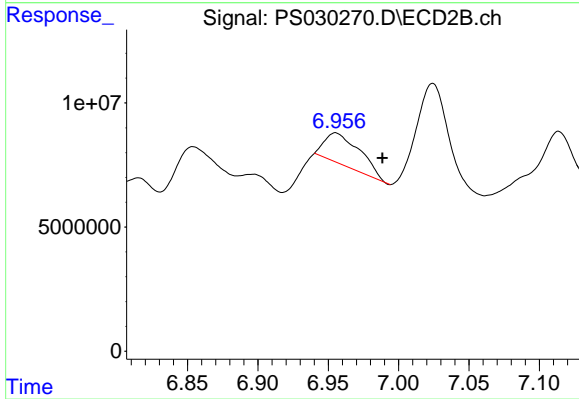
#2 3,5-DICHLORO BENZOIC ACID

R.T.: 6.501 min
 Delta R.T.: 0.048 min
 Response: 6533406
 Conc: 5.60 ng/ml



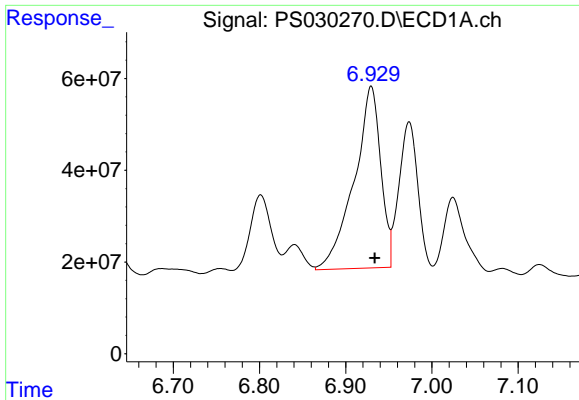
#3 4-Nitrophenol

R.T.: 6.755 min
 Delta R.T.: 0.031 min
 Response: 13218704
 Conc: 6.40 ng/ml



#3 4-Nitrophenol

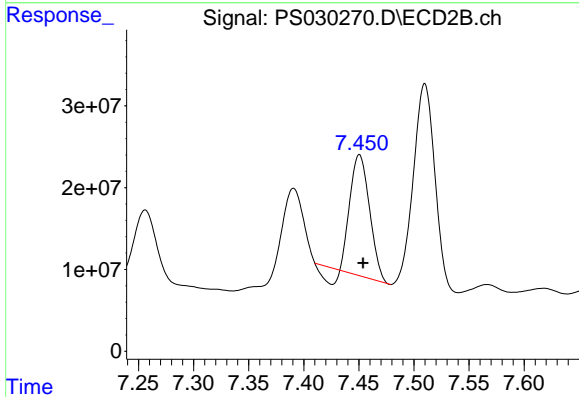
R.T.: 6.955 min
 Delta R.T.: -0.033 min
 Response: 21871730
 Conc: 20.95 ng/ml



#4 2,4-DCAA

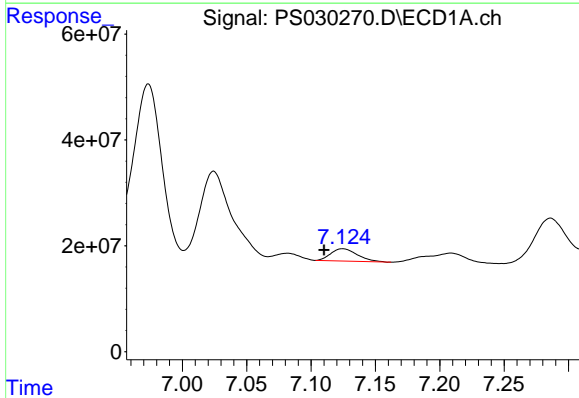
R.T.: 6.929 min
 Delta R.T.: -0.004 min
 Response: 850150506
 Conc: 298.53 ng/ml

Instrument :
 ECD_S
 ClientSampleId :
 L3-WC-6



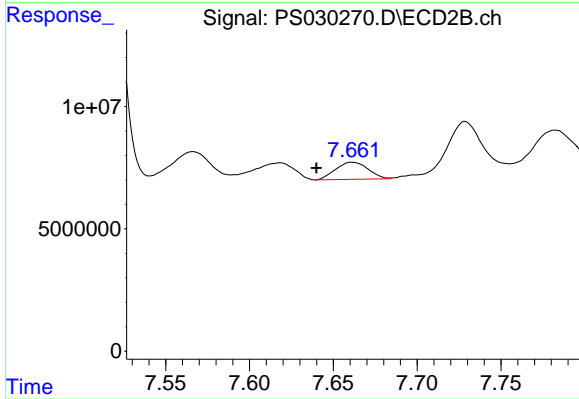
#4 2,4-DCAA

R.T.: 7.451 min
 Delta R.T.: -0.003 min
 Response: 166665587
 Conc: 208.28 ng/ml



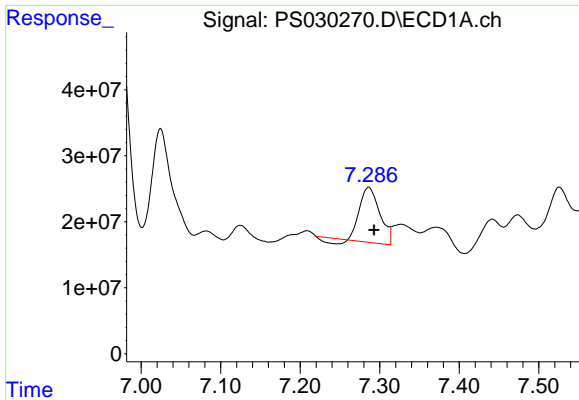
#5 DICAMBA

R.T.: 7.125 min
 Delta R.T.: 0.015 min
 Response: 33156231
 Conc: 2.87 ng/ml



#5 DICAMBA

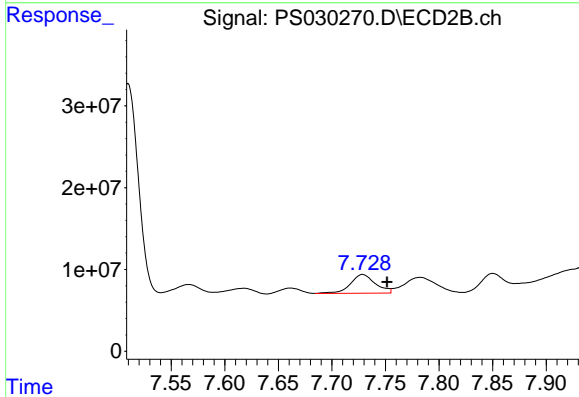
R.T.: 7.662 min
 Delta R.T.: 0.022 min
 Response: 9440474
 Conc: 2.00 ng/ml



#6 MCP

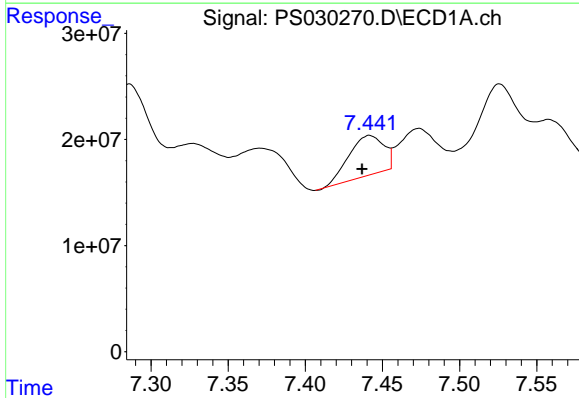
R.T.: 7.286 min
 Delta R.T.: -0.007 min
 Response: 141765002
 Conc: 19.47 ug/ml

Instrument :
 ECD_S
 ClientSampleId :
 L3-WC-6



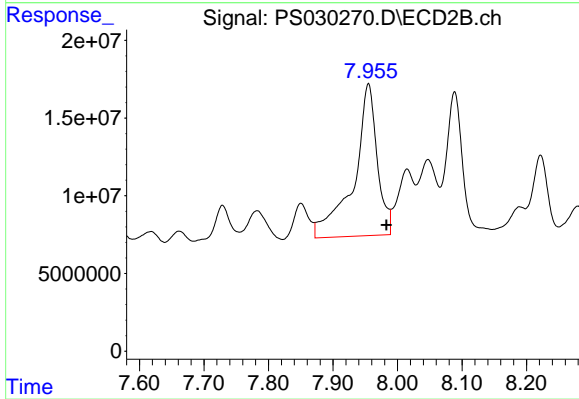
#6 MCP

R.T.: 7.729 min
 Delta R.T.: -0.023 min
 Response: 37291600
 Conc: 20.27 ug/ml



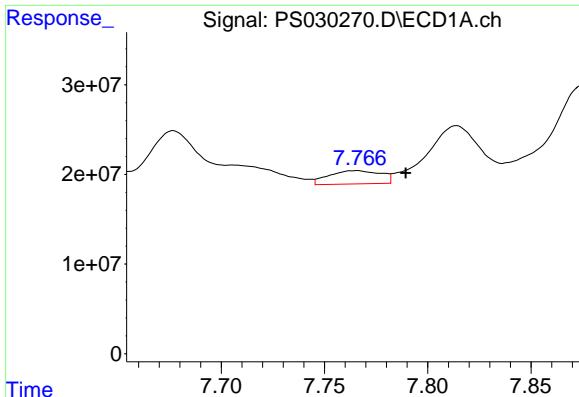
#7 MCPA

R.T.: 7.442 min
 Delta R.T.: 0.005 min
 Response: 59041047
 Conc: 5.69 ug/ml



#7 MCPA

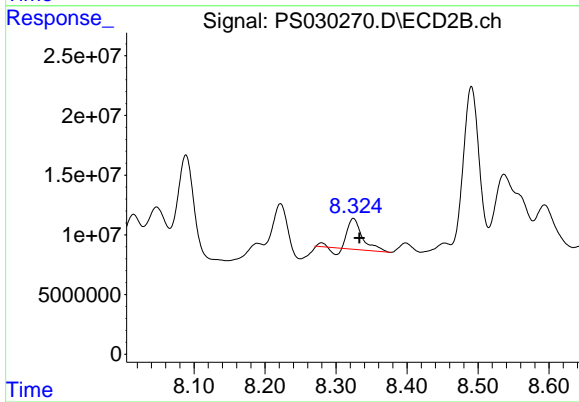
R.T.: 7.955 min
 Delta R.T.: -0.028 min
 Response: 246775119
 Conc: 93.56 ug/ml



#8 DICHLORPROP

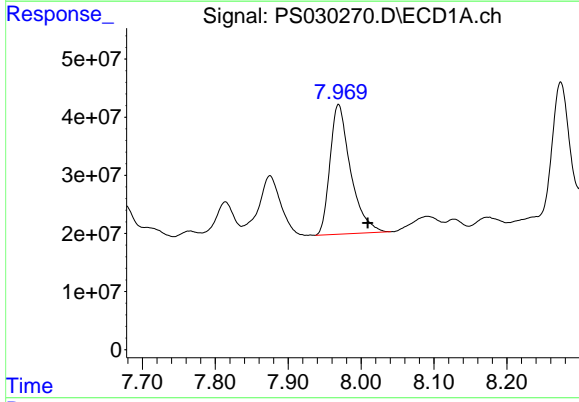
R.T.: 7.765 min
 Delta R.T.: -0.024 min
 Response: 25938815
 Conc: 8.88 ng/ml

Instrument :
 ECD_S
 ClientSampleId :
 L3-WC-6



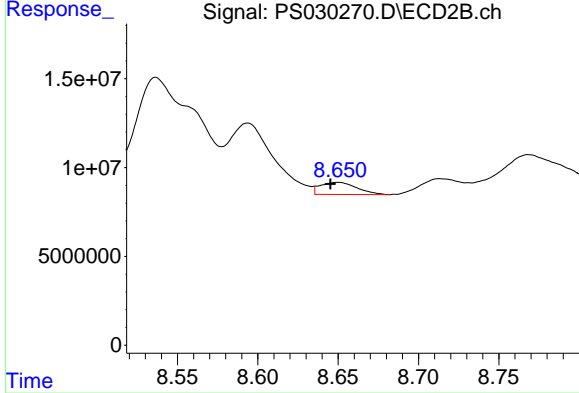
#8 DICHLORPROP

R.T.: 8.325 min
 Delta R.T.: -0.008 min
 Response: 34573064
 Conc: 29.26 ng/ml



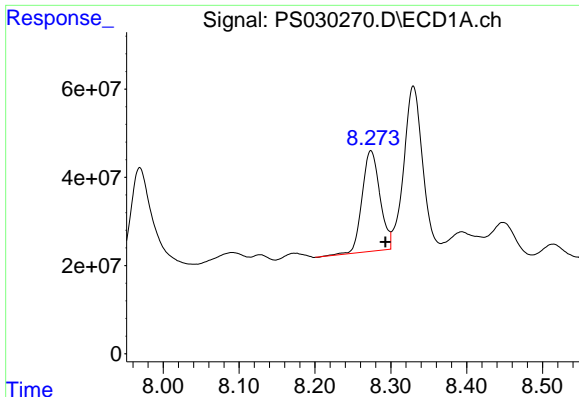
#9 2,4-D

R.T.: 7.969 min
 Delta R.T.: -0.040 min
 Response: 438565308
 Conc: 133.75 ng/ml



#9 2,4-D

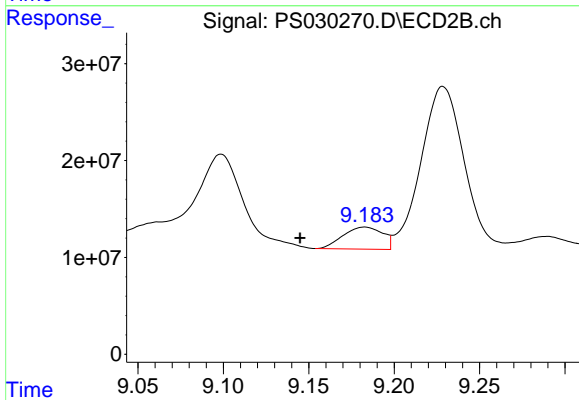
R.T.: 8.650 min
 Delta R.T.: 0.005 min
 Response: 10762041
 Conc: 8.34 ng/ml



#10 Pentachlorophenol

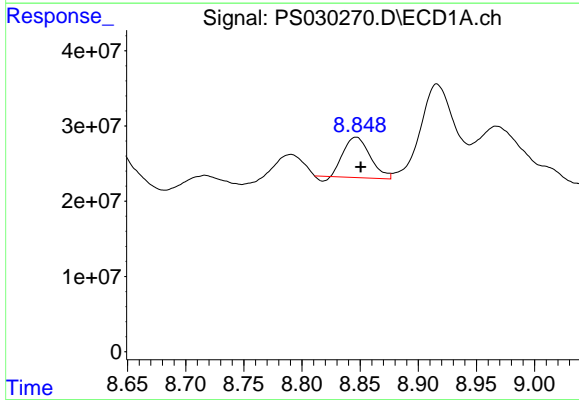
R.T.: 8.274 min
 Delta R.T.: -0.019 min
 Response: 372870073
 Conc: 9.21 ng/ml

Instrument :
 ECD_S
 ClientSampleId :
 L3-WC-6



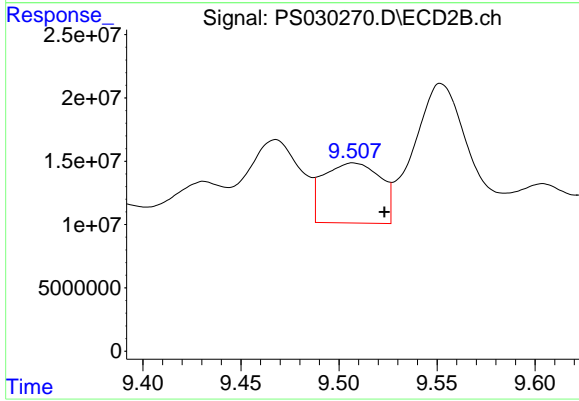
#10 Pentachlorophenol

R.T.: 9.183 min
 Delta R.T.: 0.038 min
 Response: 36802302
 Conc: 1.49 ng/ml



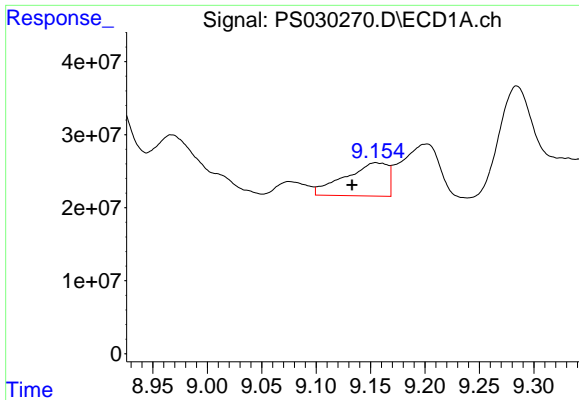
#11 2,4,5-TP (SILVEX)

R.T.: 8.846 min
 Delta R.T.: -0.004 min
 Response: 83899248
 Conc: 5.18 ng/ml



#11 2,4,5-TP (SILVEX)

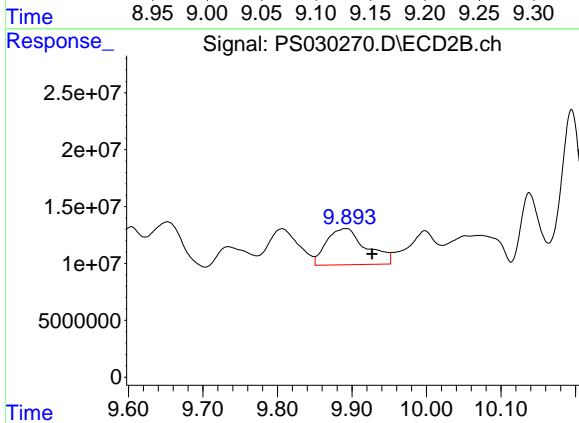
R.T.: 9.507 min
 Delta R.T.: -0.016 min
 Response: 95911373
 Conc: 9.74 ng/ml



#12 2,4,5-T

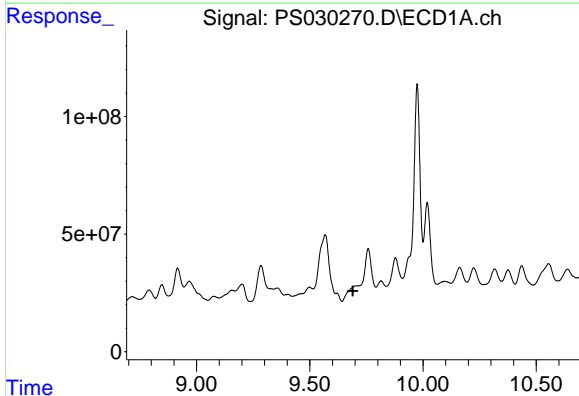
R.T.: 9.156 min
 Delta R.T.: 0.023 min
 Response: 125132834
 Conc: 7.58 ng/ml

Instrument :
 ECD_S
 ClientSampleId :
 L3-WC-6



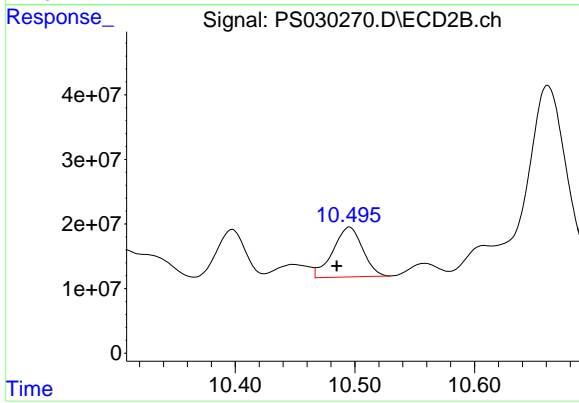
#12 2,4,5-T

R.T.: 9.892 min
 Delta R.T.: -0.035 min
 Response: 117778390
 Conc: 12.80 ng/ml



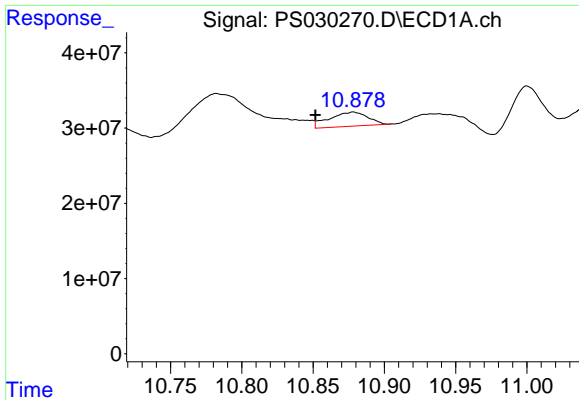
#13 2,4-DB

R.T.: 0.000 min
 Exp R.T. : 9.690 min
 Response: 0
 Conc: N.D.



#13 2,4-DB

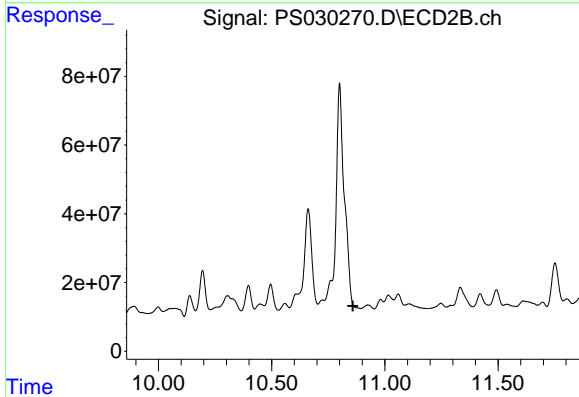
R.T.: 10.495 min
 Delta R.T.: 0.010 min
 Response: 133195890
 Conc: 134.22 ng/ml



#14 DINOSEB

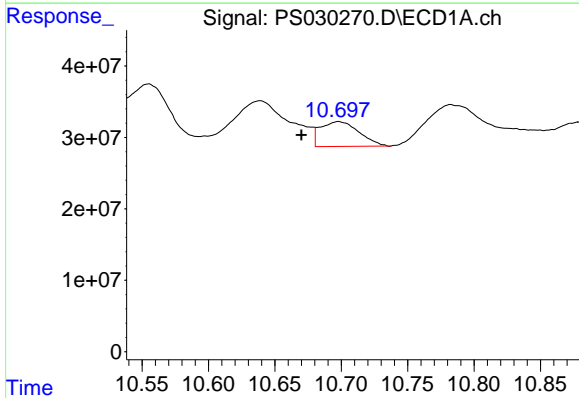
R.T.: 10.878 min
 Delta R.T.: 0.026 min
 Response: 35336226
 Conc: 3.09 ng/ml

Instrument :
 ECD_S
 ClientSampleId :
 L3-WC-6



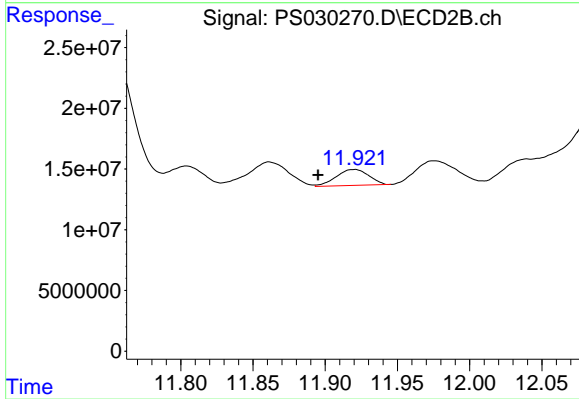
#14 DINOSEB

R.T.: 0.000 min
 Exp R.T. : 10.859 min
 Response: 0
 Conc: N.D.



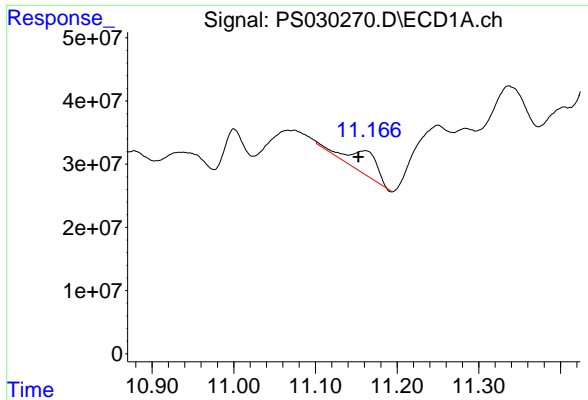
#15 Picloram

R.T.: 10.698 min
 Delta R.T.: 0.028 min
 Response: 69940461
 Conc: 3.27 ng/ml



#15 Picloram

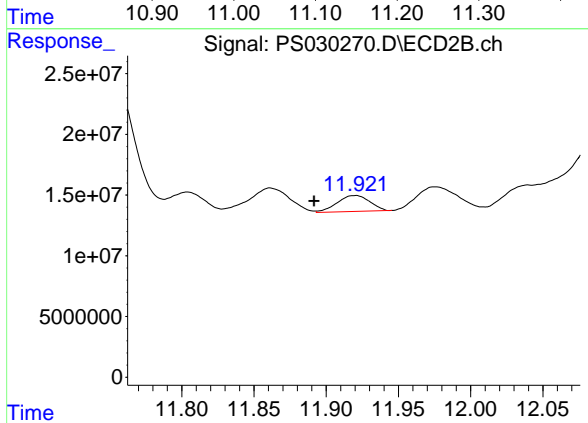
R.T.: 11.920 min
 Delta R.T.: 0.025 min
 Response: 20535771
 Conc: 1.46 ng/ml



#16 DCPA

R.T.: 11.160 min
 Delta R.T.: 0.008 min
 Response: 92554296
 Conc: 4.65 ng/ml

Instrument :
 ECD_S
 ClientSampleId :
 L3-WC-6



#16 DCPA

R.T.: 11.920 min
 Delta R.T.: 0.028 min
 Response: 20535771
 Conc: 1.52 ng/ml