

Data Path : Z:\pestpcbsrv\HPCHEM1\ECD_S\Data\PS051925\
 Data File : PS030292.D
 Signal(s) : Signal #1: ECD1A.ch Signal #2: ECD2B.ch
 Acq On : 19 May 2025 23:02
 Operator : AR\AJ
 Sample : PB168065BS
 Misc :
 ALS Vial : 30 Sample Multiplier: 1

Instrument :
 ECD_S
 ClientSampleId :
 PB168065BS

Integration File signal 1: autoint1.e
 Integration File signal 2: autoint2.e
 Quant Time: May 20 05:47:26 2025
 Quant Method : Z:\pestpcbsrv\HPCHEM1\ECD_S\Method\PS051225.M
 Quant Title : 8080.M
 QLast Update : Mon May 12 14:29:24 2025
 Response via : Initial Calibration
 Integrator: ChemStation

Volume Inj. : 1 µl
 Signal #1 Phase : ZB-MR1 Signal #2 Phase: ZB-MR2
 Signal #1 Info : 30M x 0.32mm x0.5 Signal #2 Info : 30M x 0.32mm x 0.25µm

Compound	RT#1	RT#2	Resp#1	Resp#2	ng/ml	ng/ml

System Monitoring Compounds						
4) S 2,4-DCAA	6.931	7.450	1559.4E6	428.3E6	547.593	535.226
Target Compounds						
1) T Dalapon	2.445	2.518	2439.3E6	974.8E6	496.254	479.966
2) T 3,5-DICHL...	6.136	6.450	2105.5E6	550.4E6	504.849	472.128
3) T 4-Nitroph...	6.721	6.985	1031.4E6	454.3E6	499.327	435.181
5) T DICAMBA	7.107	7.635	5939.0E6	2389.1E6	513.874	505.310
6) T MCPP	7.285	7.742	377.2E6	89098149	51.793	48.429
7) T MCPA	7.427	7.971	509.2E6	126.0E6	49.055	47.767
8) T DICHLORPROP	7.787	8.327	1496.7E6	588.7E6	512.345	498.267
9) T 2,4-D	8.006	8.639	1700.5E6	660.8E6	518.625	512.029
10) T Pentachlo...	8.283	9.139	21670.4E6	13129.8E6	535.061	531.896
11) T 2,4,5-TP ...	8.847	9.517	8455.4E6	5133.4E6	522.068	521.134
12) T 2,4,5-T	9.128	9.921	8723.7E6	4767.5E6	528.224	518.008
13) T 2,4-DB	9.686	10.479	1453.2E6	447.9E6	556.821	451.314
14) T DINOSEB	10.847	10.852	5891.7E6	3475.2E6	515.169	508.668
15) T Picloram	10.667	11.888	11338.0E6	14558.5E6	530.136	1034.492 #
16) T DCPA	11.148	11.888	10495.7E6	14558.5E6	527.120	1077.570 #

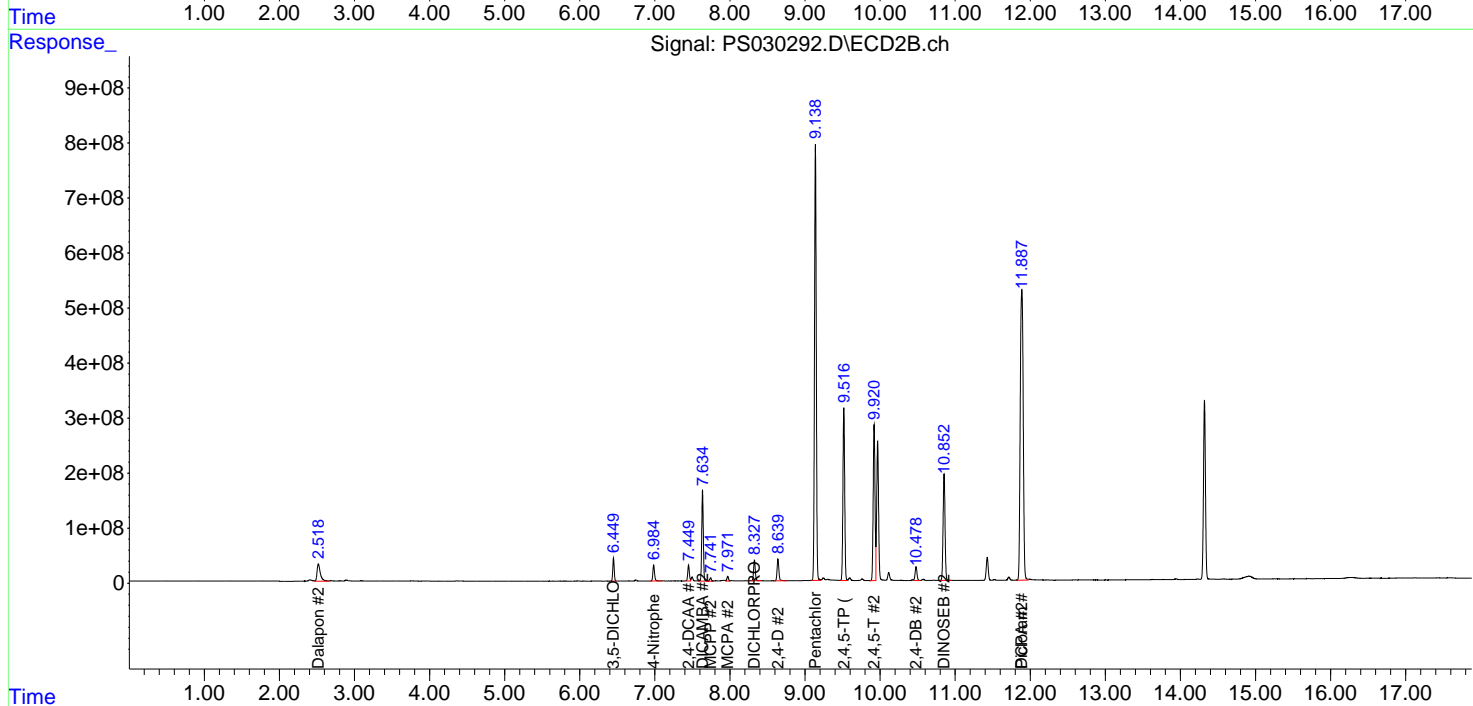
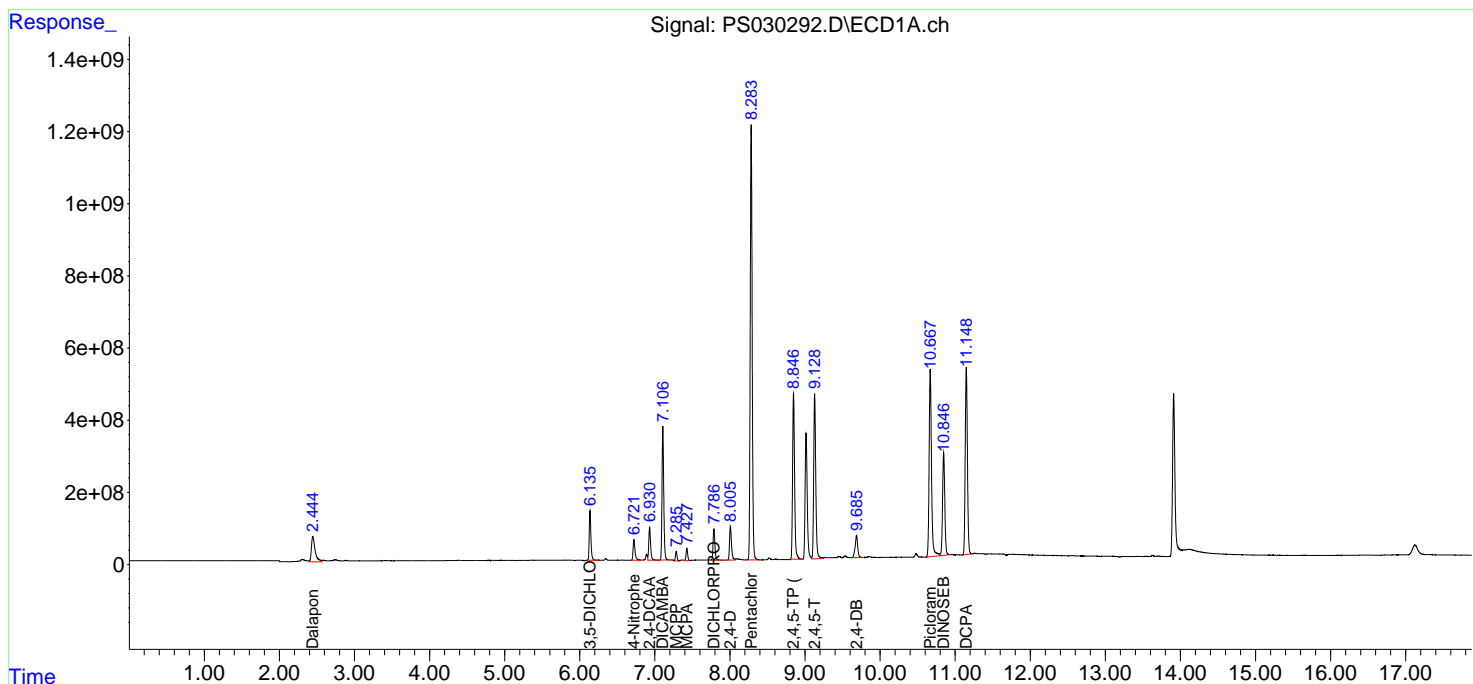
(f)=RT Delta > 1/2 Window (#)=Amounts differ by > 25% (m)=manual int.

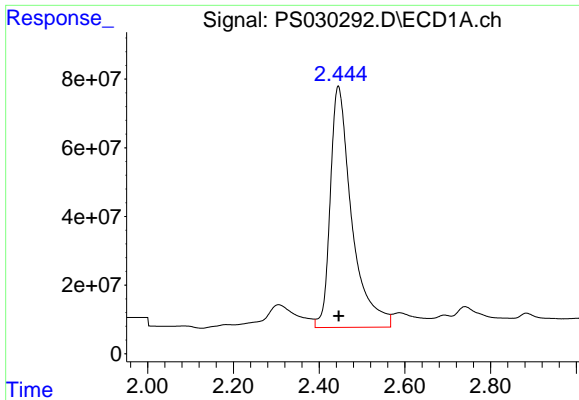
Data Path : Z:\pestpcbsrv\HPCHEM1\ECD_S\Data\PS051925\
 Data File : PS030292.D
 Signal(s) : Signal #1: ECD1A.ch Signal #2: ECD2B.ch
 Acq On : 19 May 2025 23:02
 Operator : AR\AJ
 Sample : PB168065BS
 Misc :
 ALS Vial : 30 Sample Multiplier: 1

Instrument :
 ECD_S
 ClientSampleId :
 PB168065BS

Integration File signal 1: autoint1.e
 Integration File signal 2: autoint2.e
 Quant Time: May 20 05:47:26 2025
 Quant Method : Z:\pestpcbsrv\HPCHEM1\ECD_S\Method\PS051225.M
 Quant Title : 8080.M
 QLast Update : Mon May 12 14:29:24 2025
 Response via : Initial Calibration
 Integrator: ChemStation

Volume Inj. : 1 µl
 Signal #1 Phase : ZB-MR1 Signal #2 Phase: ZB-MR2
 Signal #1 Info : 30M x 0.32mm x0.5 Signal #2 Info : 30M x 0.32mm x 0.25µm

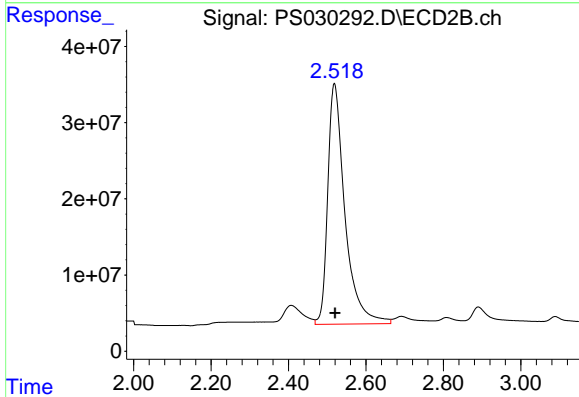




#1 Dalapon

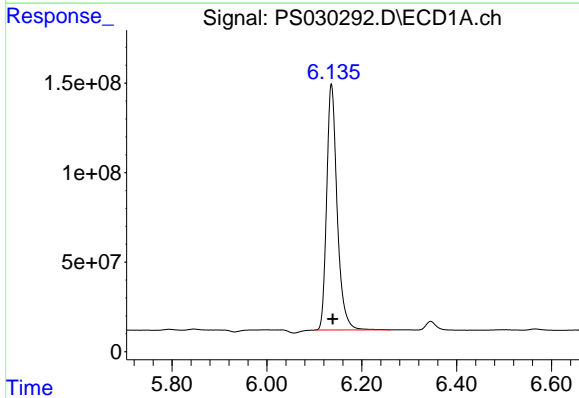
R.T.: 2.445 min
 Delta R.T.: -0.001 min
 Response: 2439268922
 Conc: 496.25 ng/ml

Instrument :
 ECD_S
 ClientSampleId :
 PB168065BS



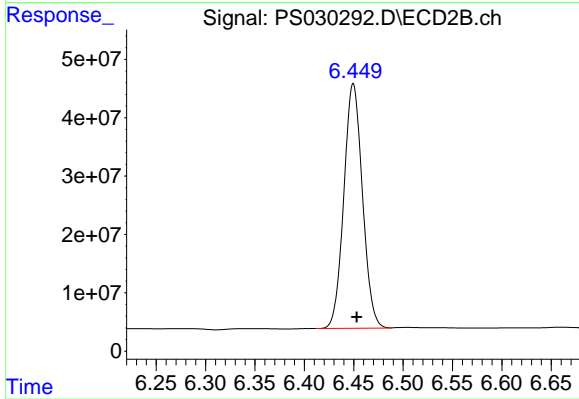
#1 Dalapon

R.T.: 2.518 min
 Delta R.T.: -0.002 min
 Response: 974834638
 Conc: 479.97 ng/ml



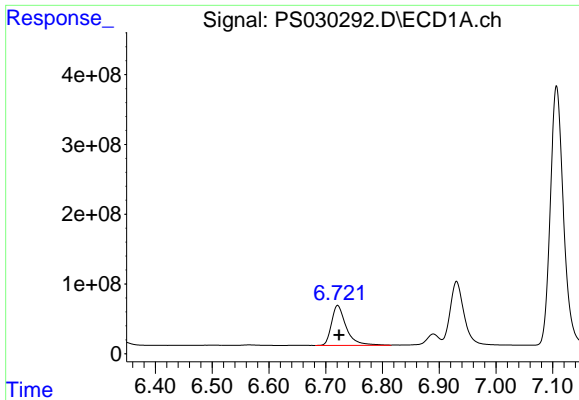
#2 3,5-DICHLOROBENZOIC ACID

R.T.: 6.136 min
 Delta R.T.: -0.003 min
 Response: 2105498181
 Conc: 504.85 ng/ml



#2 3,5-DICHLOROBENZOIC ACID

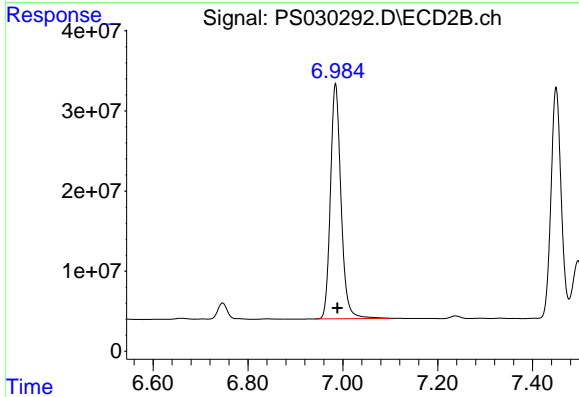
R.T.: 6.450 min
 Delta R.T.: -0.004 min
 Response: 550421244
 Conc: 472.13 ng/ml



#3 4-Nitrophenol

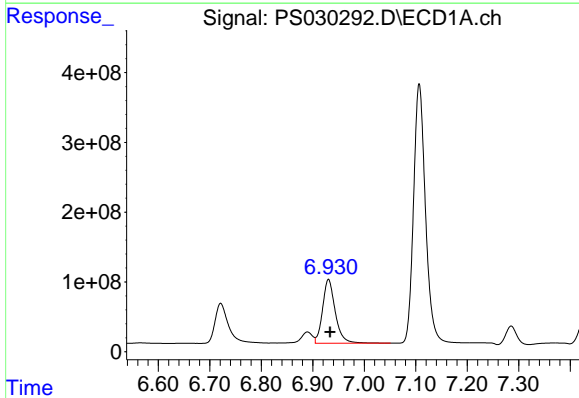
R.T.: 6.721 min
 Delta R.T.: -0.003 min
 Response: 1031416260
 Conc: 499.33 ng/ml

Instrument :
 ECD_S
 ClientSampleId :
 PB168065BS



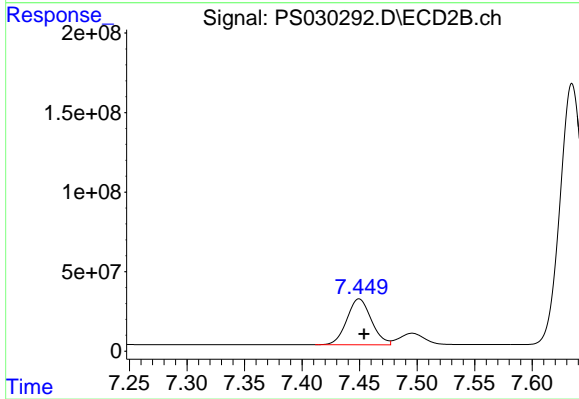
#3 4-Nitrophenol

R.T.: 6.985 min
 Delta R.T.: -0.004 min
 Response: 454342927
 Conc: 435.18 ng/ml



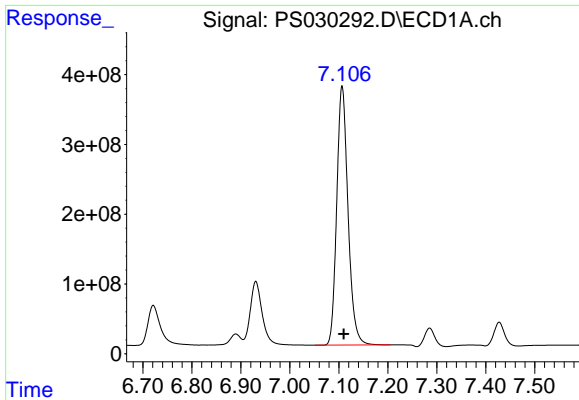
#4 2,4-DCAA

R.T.: 6.931 min
 Delta R.T.: -0.003 min
 Response: 1559440572
 Conc: 547.59 ng/ml



#4 2,4-DCAA

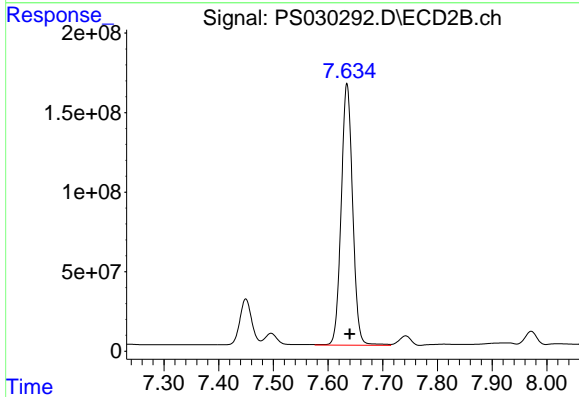
R.T.: 7.450 min
 Delta R.T.: -0.004 min
 Response: 428289849
 Conc: 535.23 ng/ml



#5 DICAMBA

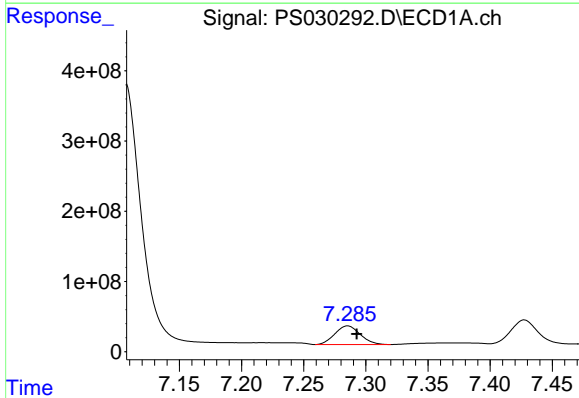
R.T.: 7.107 min
 Delta R.T.: -0.003 min
 Response: 5939028758
 Conc: 513.87 ng/ml

Instrument :
 ECD_S
 ClientSampleId :
 PB168065BS



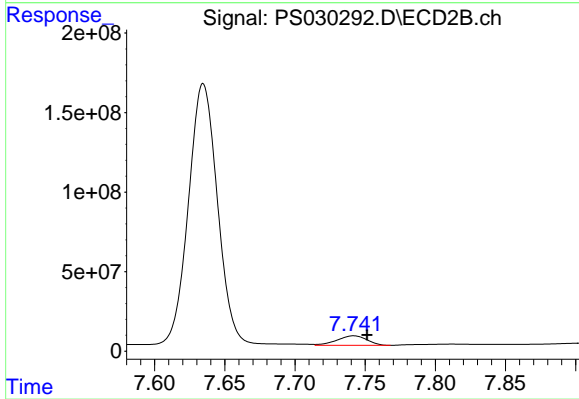
#5 DICAMBA

R.T.: 7.635 min
 Delta R.T.: -0.005 min
 Response: 2389093941
 Conc: 505.31 ng/ml



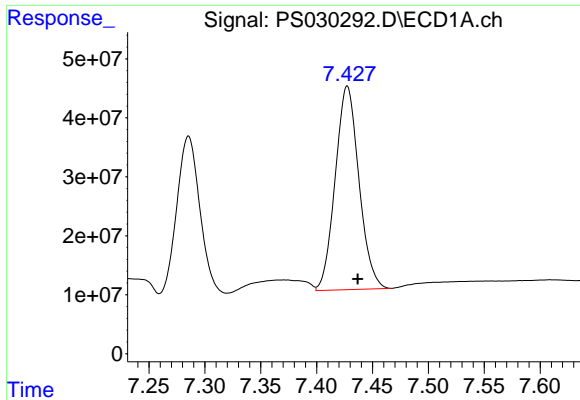
#6 MCPP

R.T.: 7.285 min
 Delta R.T.: -0.007 min
 Response: 377195252
 Conc: 51.79 ug/ml



#6 MCPP

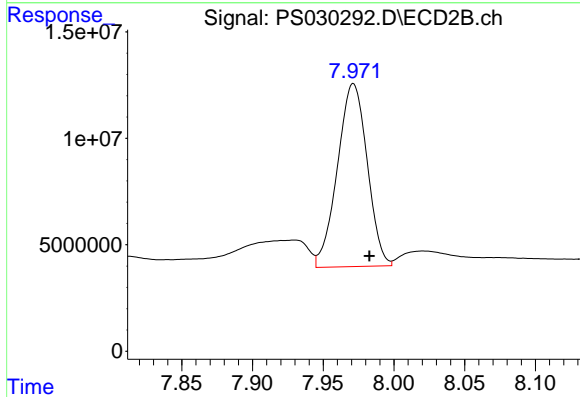
R.T.: 7.742 min
 Delta R.T.: -0.010 min
 Response: 89098149
 Conc: 48.43 ug/ml



#7 MCPA

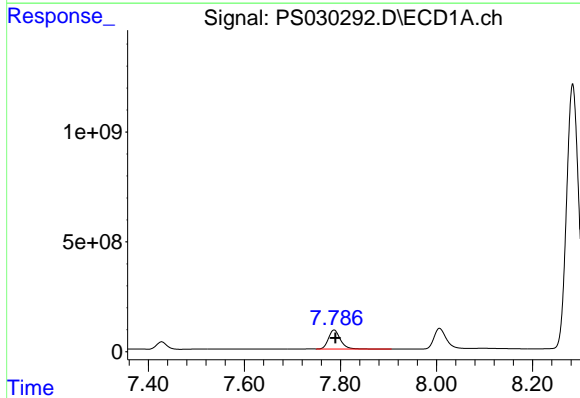
R.T.: 7.427 min
 Delta R.T.: -0.009 min
 Response: 509233179
 Conc: 49.05 ug/ml

Instrument :
 ECD_S
 ClientSampleId :
 PB168065BS



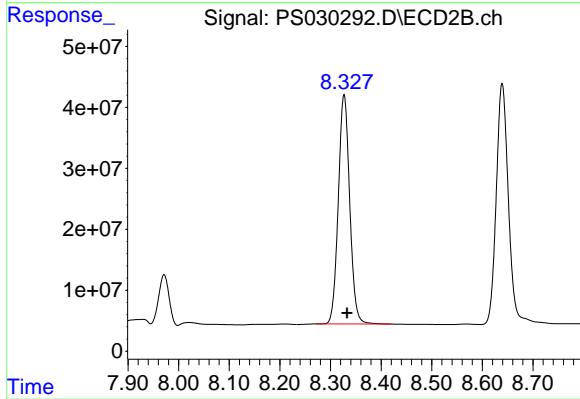
#7 MCPA

R.T.: 7.971 min
 Delta R.T.: -0.011 min
 Response: 125994463
 Conc: 47.77 ug/ml



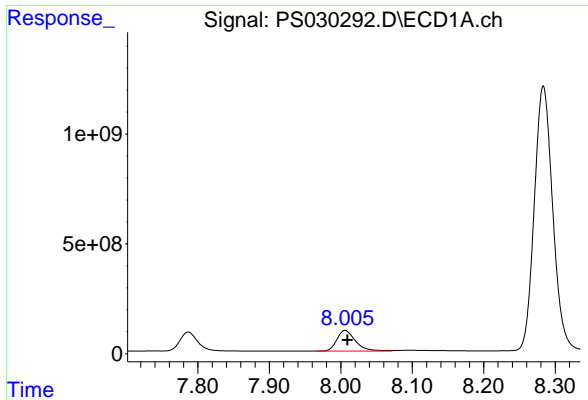
#8 DICHLORPROP

R.T.: 7.787 min
 Delta R.T.: -0.003 min
 Response: 1496735432
 Conc: 512.34 ng/ml



#8 DICHLORPROP

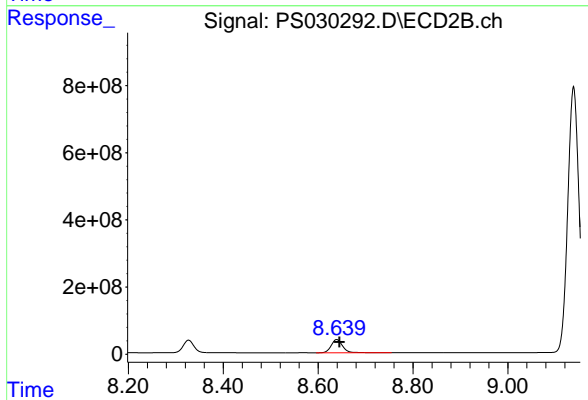
R.T.: 8.327 min
 Delta R.T.: -0.006 min
 Response: 588669124
 Conc: 498.27 ng/ml



#9 2,4-D

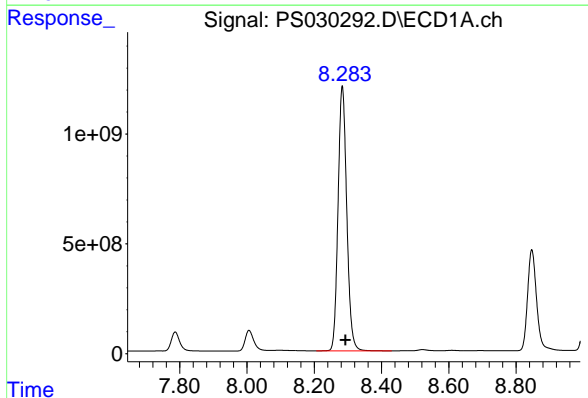
R.T.: 8.006 min
 Delta R.T.: -0.003 min
 Response: 170539184
 Conc: 518.63 ng/ml

Instrument :
 ECD_S
 ClientSampleId :
 PB168065BS



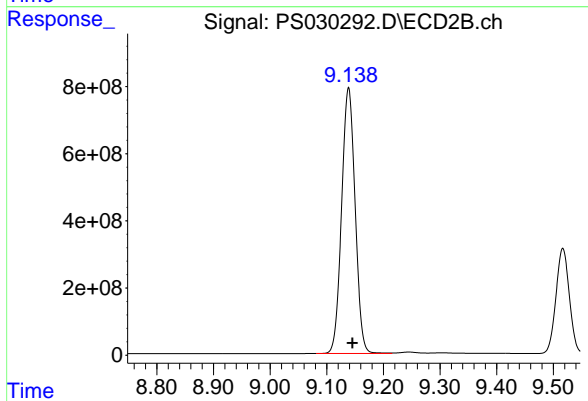
#9 2,4-D

R.T.: 8.639 min
 Delta R.T.: -0.006 min
 Response: 660774089
 Conc: 512.03 ng/ml



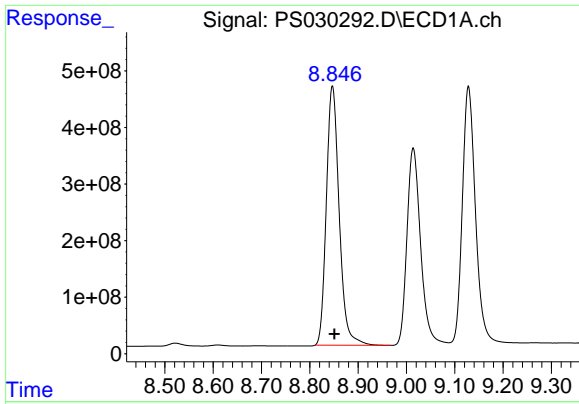
#10 Pentachlorophenol

R.T.: 8.283 min
 Delta R.T.: -0.010 min
 Response: 21670379356
 Conc: 535.06 ng/ml



#10 Pentachlorophenol

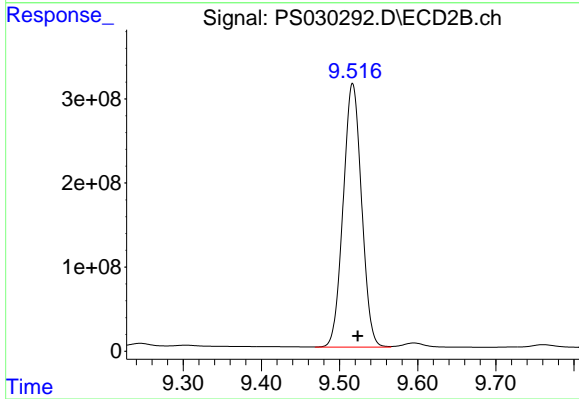
R.T.: 9.139 min
 Delta R.T.: -0.006 min
 Response: 13129827880
 Conc: 531.90 ng/ml



#11 2,4,5-TP (SILVEX)

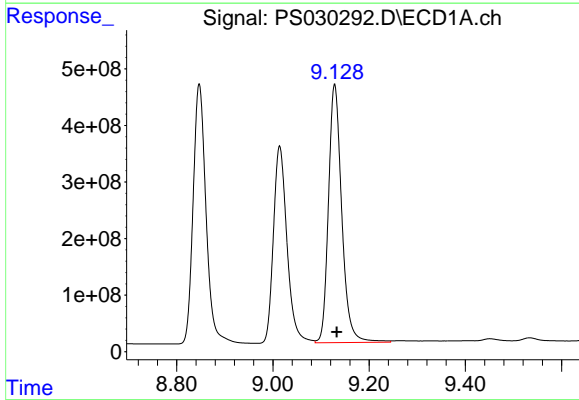
R.T.: 8.847 min
 Delta R.T.: -0.004 min
 Response: 8455414785
 Conc: 522.07 ng/ml

Instrument :
 ECD_S
 ClientSampleId :
 PB168065BS



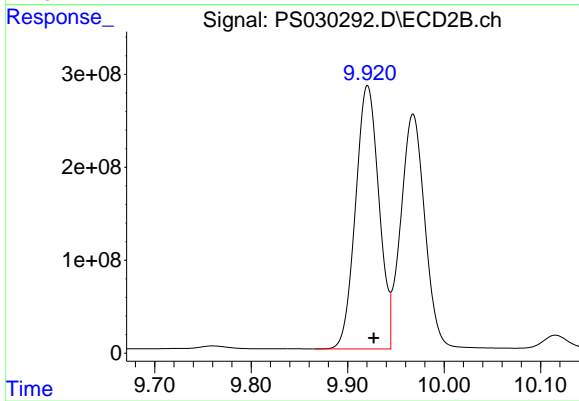
#11 2,4,5-TP (SILVEX)

R.T.: 9.517 min
 Delta R.T.: -0.007 min
 Response: 5133391607
 Conc: 521.13 ng/ml



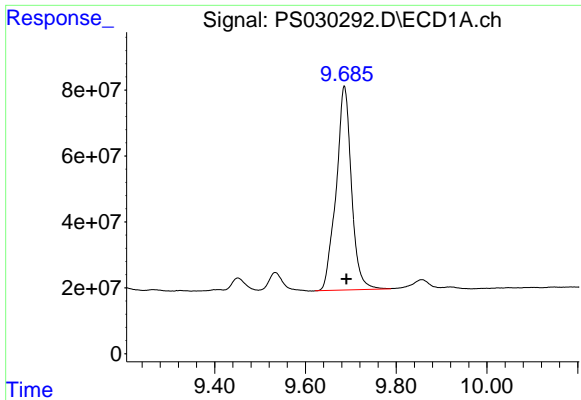
#12 2,4,5-T

R.T.: 9.128 min
 Delta R.T.: -0.005 min
 Response: 8723724149
 Conc: 528.22 ng/ml



#12 2,4,5-T

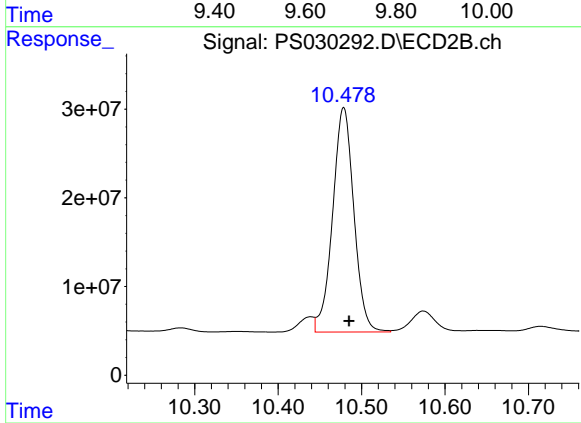
R.T.: 9.921 min
 Delta R.T.: -0.006 min
 Response: 4767538484
 Conc: 518.01 ng/ml



#13 2,4-DB

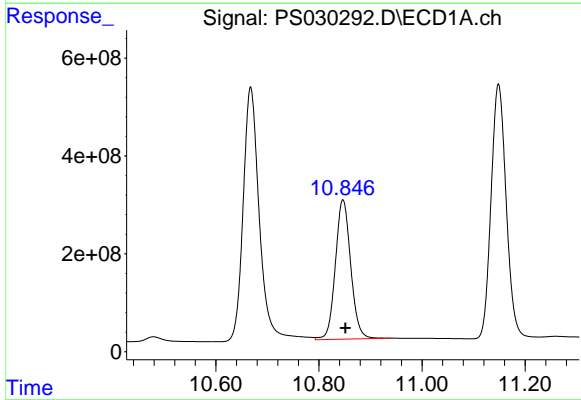
R.T.: 9.686 min
Delta R.T.: -0.004 min
Response: 1453176834
Conc: 556.82 ng/ml

Instrument :
ECD_S
ClientSampleId :
PB168065BS



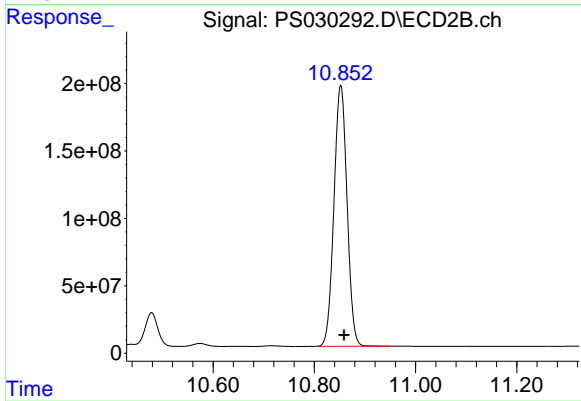
#13 2,4-DB

R.T.: 10.479 min
Delta R.T.: -0.006 min
Response: 447871215
Conc: 451.31 ng/ml



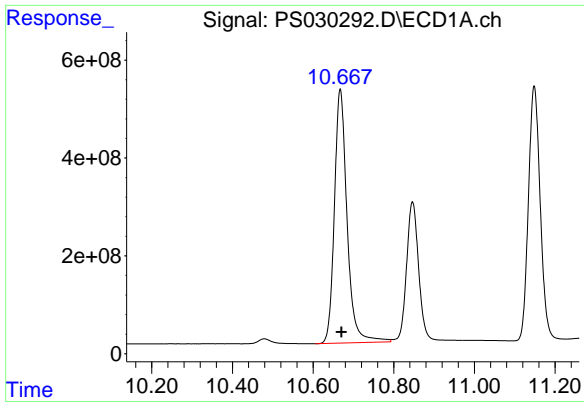
#14 DINOSEB

R.T.: 10.847 min
Delta R.T.: -0.005 min
Response: 5891654136
Conc: 515.17 ng/ml



#14 DINOSEB

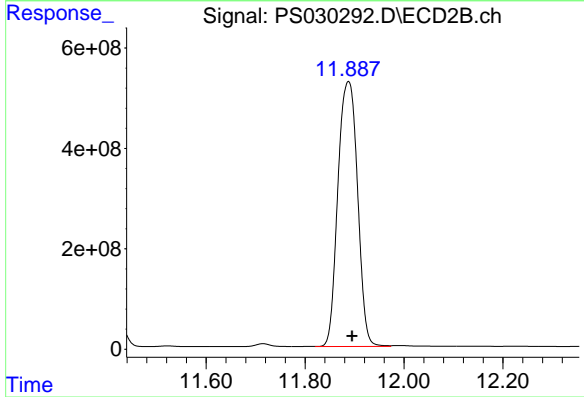
R.T.: 10.852 min
Delta R.T.: -0.006 min
Response: 3475208881
Conc: 508.67 ng/ml



#15 Picloram

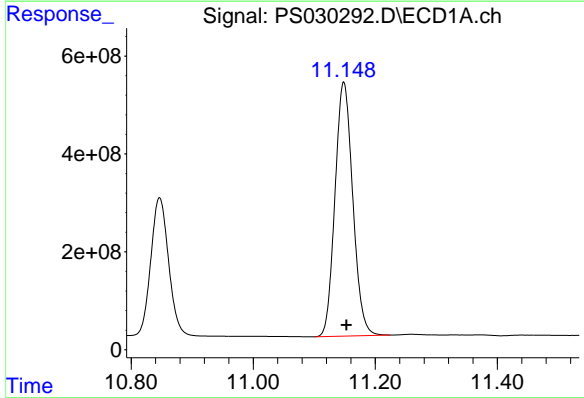
R.T.: 10.667 min
 Delta R.T.: -0.003 min
 Response: 11337996664
 Conc: 530.14 ng/ml

Instrument :
 ECD_S
 ClientSampleId :
 PB168065BS



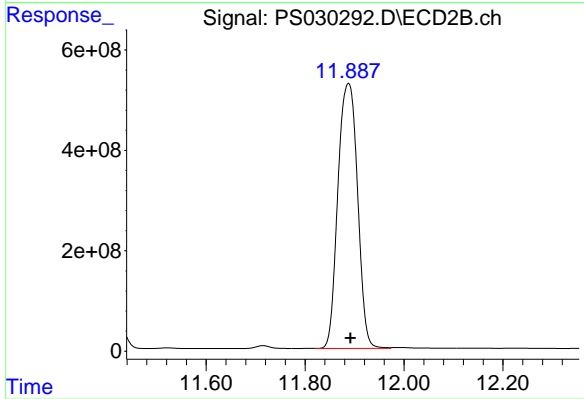
#15 Picloram

R.T.: 11.888 min
 Delta R.T.: -0.007 min
 Response: 14558531449
 Conc: 1034.49 ng/ml



#16 DCPA

R.T.: 11.148 min
 Delta R.T.: -0.004 min
 Response: 10495745932
 Conc: 527.12 ng/ml



#16 DCPA

R.T.: 11.888 min
 Delta R.T.: -0.004 min
 Response: 14558531449
 Conc: 1077.57 ng/ml