

Data Path : Z:\pestpcbsrv\HPCHEM1\ECD_S\Data\PS052021\
 Data File : PS015048.D
 Signal(s) : Signal #1: ECD1A.ch Signal #2: ECD2B.ch
 Acq On : 20 May 2021 12:21
 Operator : DD\AJ
 Sample : M2436-04
 Misc :
 ALS Vial : 7 Sample Multiplier: 1

Instrument :
 ECD_S
 ClientSampleId :
 TP-2A

Integration File signal 1: autoint1.e
 Integration File signal 2: autoint2.e
 Quant Time: May 20 12:46:28 2021
 Quant Method : Z:\pestpcbsrv\HPCHEM1\ECD_S\Method\PS051021.M
 Quant Title : 8080.M
 QLast Update : Tue May 11 00:04:04 2021
 Response via : Initial Calibration
 Integrator: ChemStation

Volume Inj. : 2 µl
 Signal #1 Phase : Rtx-CLPesticides Signal #2 Phase: Rtx-CLPesticides2
 Signal #1 Info : 30M x 0.32mm x0.5 Signal #2 Info : 30M x 0.32mm x 0.25µm

Compound	RT#1	RT#2	Resp#1	Resp#2	ng/ml	ng/ml

System Monitoring Compounds						
4) S 2,4-DCAA	7.154	6.884	455.9E6	160.3E6	272.472	331.344
Target Compounds						
1) T Dalapon	2.970	2.567	98825470	65505599	48.316	96.914 #
2) T 3,5-DICHL...	6.425f	6.074	14095196	50544553	6.014	65.428 #
3) T 4-Nitroph...	6.987	0.000	5209550	0	6.265	N.D. #
5) T DICAMBA	7.329	7.017	13764409	11366853	2.101	5.307 #
6) T MCPP	7.502	7.113	19536507	11369655	3.995	6.433 #
7) T MCPA	7.640	7.339	8770234	36335741	1.262	14.466 #
8) T DICHLORPROP	7.973f	7.714	1052707	8232459	<MDL	15.223 #
9) T 2,4-D	8.212f	7.939	8324125	9904731	4.678	16.266 #
10) T Pentachlo...	8.564	8.393	67281705	27687720	2.862	3.840 #
11) T 2,4,5-TP ...	9.104	8.729	6503112	20407150	<MDL	7.081 #
12) T 2,4,5-T	9.404	9.136	17449099	19424565	1.908	7.278 #
13) T 2,4-DB	9.948	9.665	20525147	2137903	11.829	6.060 #
14) T DINOSEB	11.062	9.993	21317826	28122940	2.973	13.731 #
15) T Picloram	10.942	10.976	94272182	20903661	7.761	5.246 #
16) T DCPA	11.417f	10.890	1866315	5867796	<MDL	1.377 #

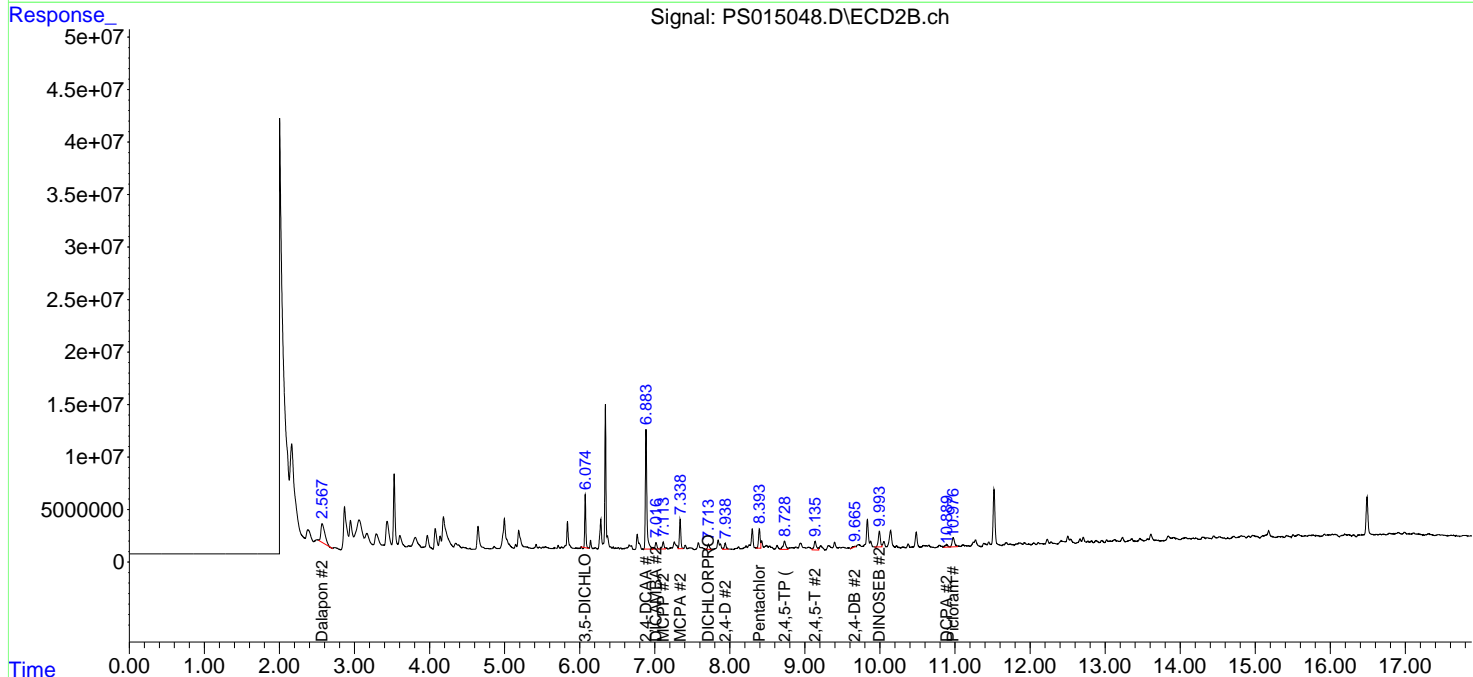
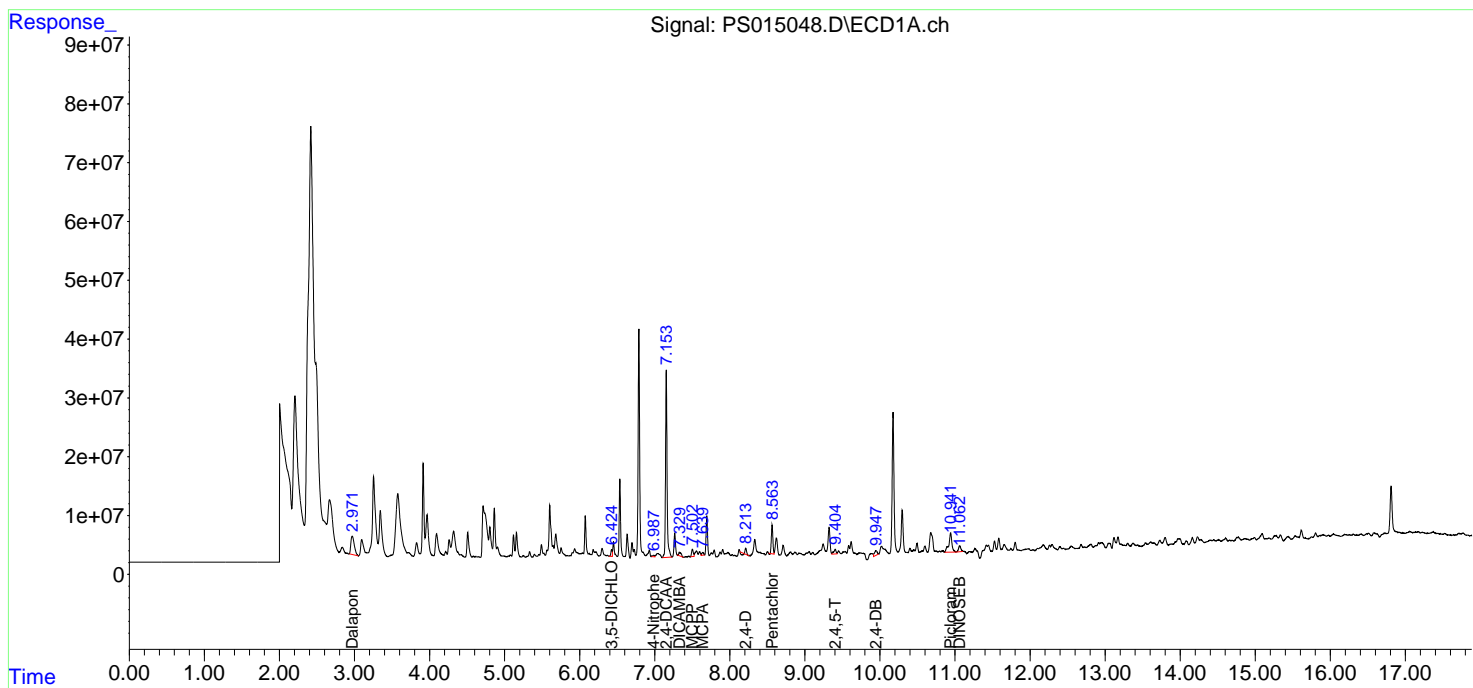
(f)=RT Delta > 1/2 Window (#)=Amounts differ by > 25% (m)=manual int.

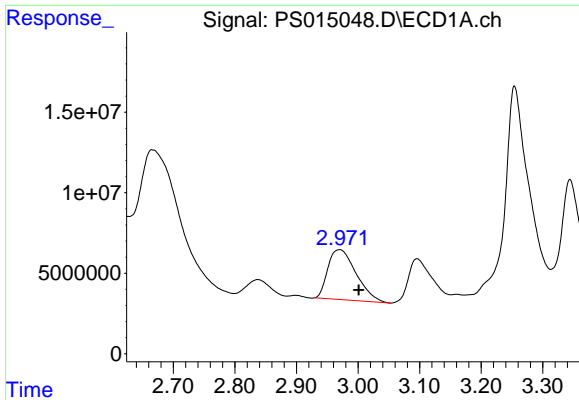
Data Path : Z:\pestpcbsrv\HPCHEM1\ECD_S\Data\PS052021\
 Data File : PS015048.D
 Signal(s) : Signal #1: ECD1A.ch Signal #2: ECD2B.ch
 Acq On : 20 May 2021 12:21
 Operator : DD\AJ
 Sample : M2436-04
 Misc :
 ALS Vial : 7 Sample Multiplier: 1

Instrument :
 ECD_S
 ClientSampled :
 TP-2A

Integration File signal 1: autoint1.e
 Integration File signal 2: autoint2.e
 Quant Time: May 20 12:46:28 2021
 Quant Method : Z:\pestpcbsrv\HPCHEM1\ECD_S\Method\PS051021.M
 Quant Title : 8080.M
 QLast Update : Tue May 11 00:04:04 2021
 Response via : Initial Calibration
 Integrator: ChemStation

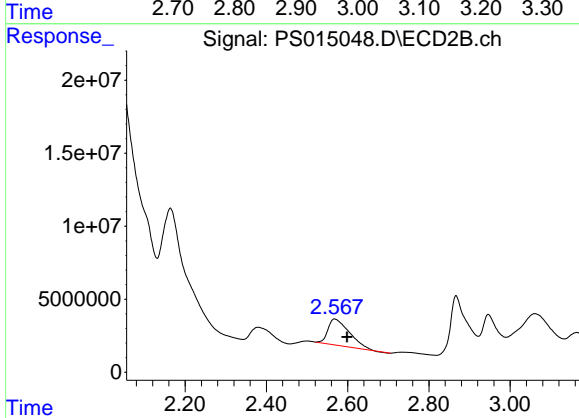
Volume Inj. : 2 µl
 Signal #1 Phase : Rtx-CLPesticides Signal #2 Phase: Rtx-CLPesticides2
 Signal #1 Info : 30M x 0.32mm x0.5 Signal #2 Info : 30M x 0.32mm x 0.25µm



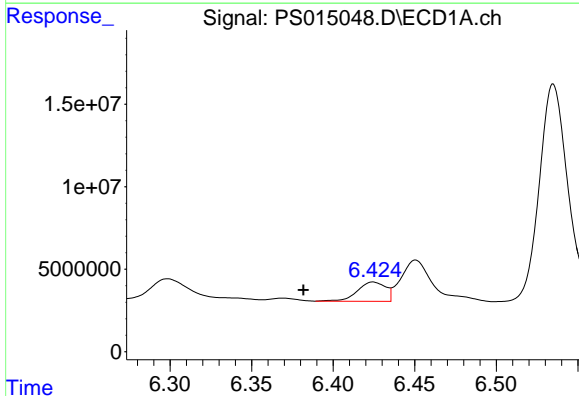


#1 Dalapon
 R.T.: 2.970 min
 Delta R.T.: -0.031 min
 Response: 98825470
 Conc: 48.32 ng/ml

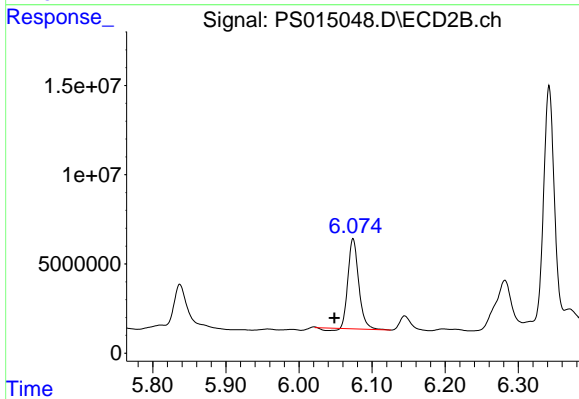
Instrument :
 ECD_S
 ClientSampled :
 TP-2A



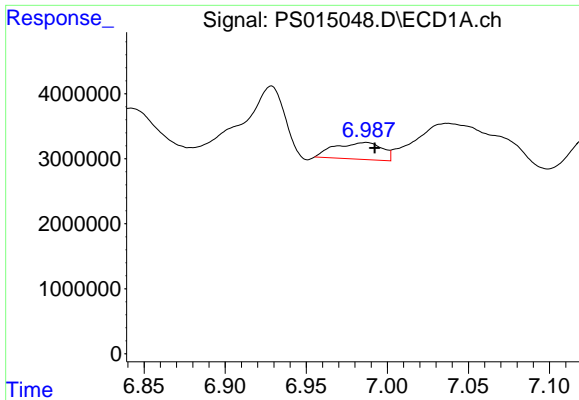
#1 Dalapon
 R.T.: 2.567 min
 Delta R.T.: -0.032 min
 Response: 65505599
 Conc: 96.91 ng/ml



#2 3,5-DICHLOROBENZOIC ACID
 R.T.: 6.425 min
 Delta R.T.: 0.043 min
 Response: 14095196
 Conc: 6.01 ng/ml



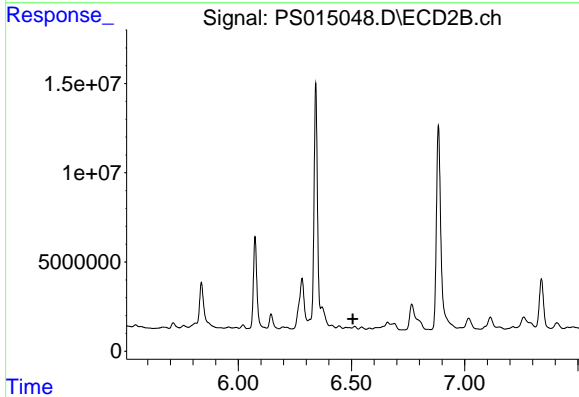
#2 3,5-DICHLOROBENZOIC ACID
 R.T.: 6.074 min
 Delta R.T.: 0.025 min
 Response: 50544553
 Conc: 65.43 ng/ml



#3 4-Nitrophenol

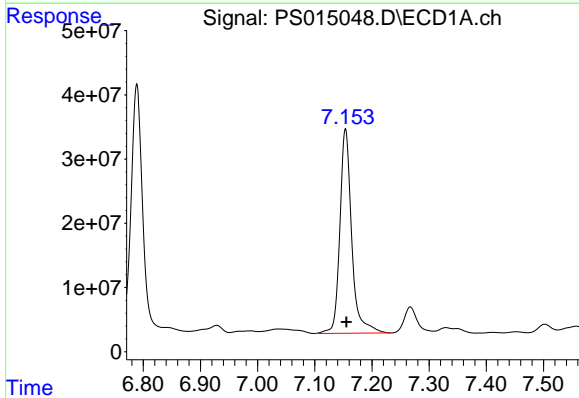
R.T.: 6.987 min
 Delta R.T.: -0.006 min
 Response: 5209550
 Conc: 6.27 ng/ml

Instrument :
 ECD_S
 ClientSampled :
 TP-2A



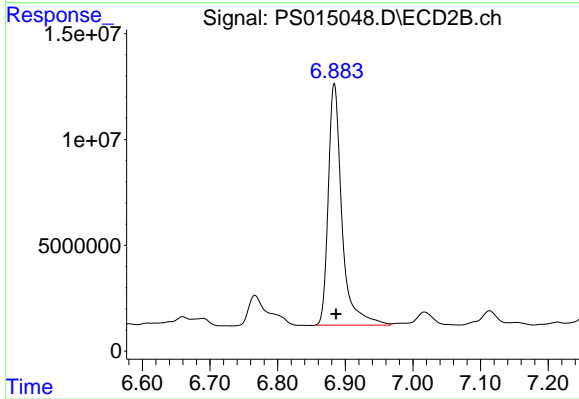
#3 4-Nitrophenol

R.T.: 0.000 min
 Exp R.T. : 6.506 min
 Response: 0
 Conc: N.D.



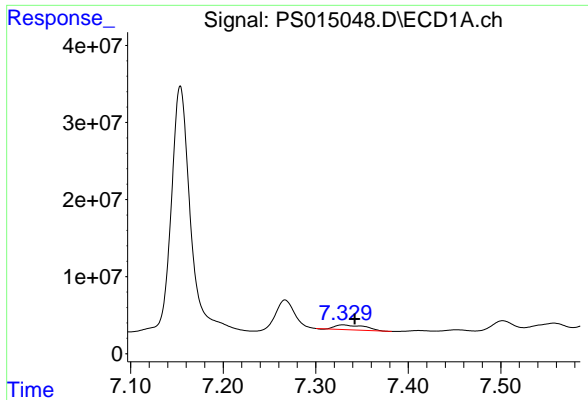
#4 2,4-DCAA

R.T.: 7.154 min
 Delta R.T.: -0.002 min
 Response: 455913004
 Conc: 272.47 ng/ml



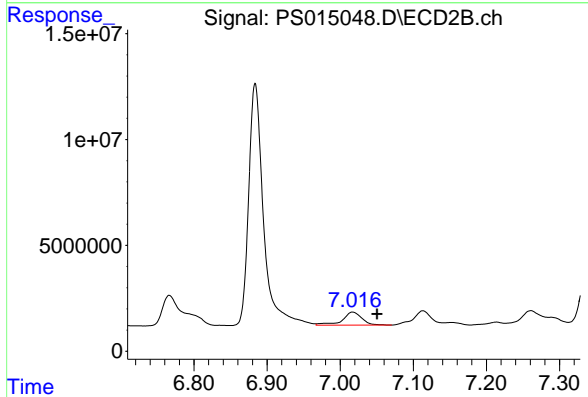
#4 2,4-DCAA

R.T.: 6.884 min
 Delta R.T.: -0.002 min
 Response: 160341655
 Conc: 331.34 ng/ml

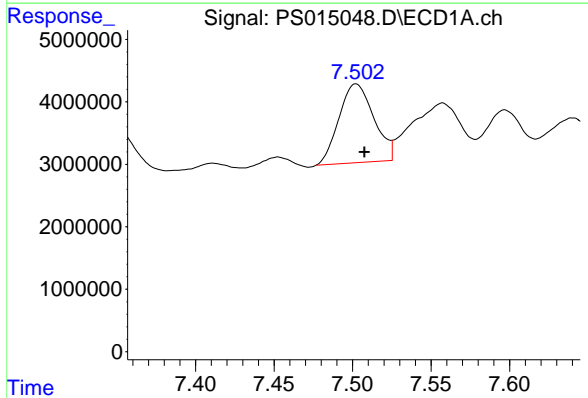


#5 DICAMBA
 R.T.: 7.329 min
 Delta R.T.: -0.013 min
 Response: 13764409
 Conc: 2.10 ng/ml

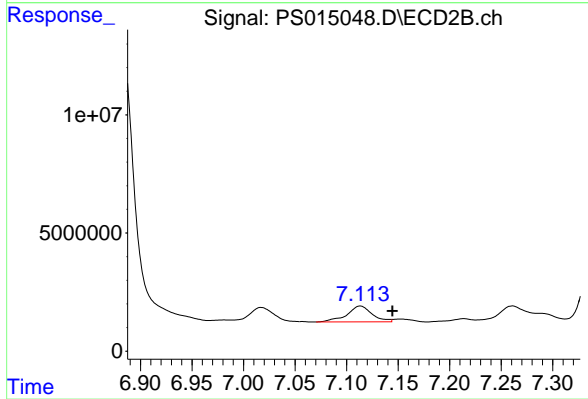
Instrument :
 ECD_S
 ClientSampleId :
 TP-2A



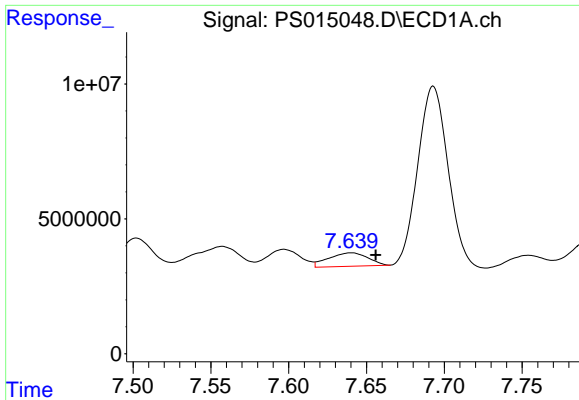
#5 DICAMBA
 R.T.: 7.017 min
 Delta R.T.: -0.033 min
 Response: 11366853
 Conc: 5.31 ng/ml



#6 MCP
 R.T.: 7.502 min
 Delta R.T.: -0.005 min
 Response: 19536507
 Conc: 4.00 ug/ml

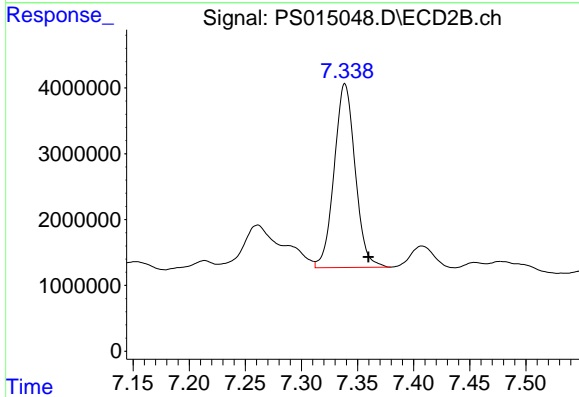


#6 MCP
 R.T.: 7.113 min
 Delta R.T.: -0.031 min
 Response: 11369655
 Conc: 6.43 ug/ml

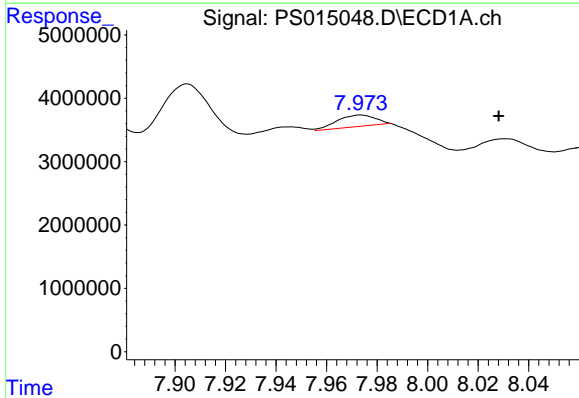


#7 MCPA
 R.T.: 7.640 min
 Delta R.T.: -0.016 min
 Response: 8770234
 Conc: 1.26 ug/ml

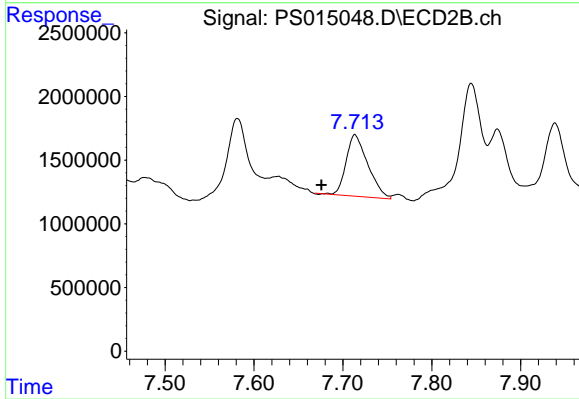
Instrument :
 ECD_S
 ClientSampled :
 TP-2A



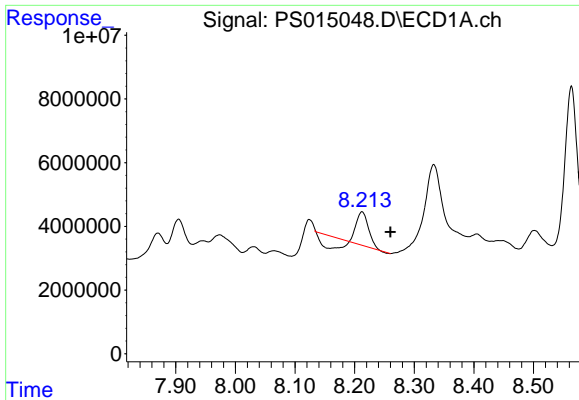
#7 MCPA
 R.T.: 7.339 min
 Delta R.T.: -0.021 min
 Response: 36335741
 Conc: 14.47 ug/ml



#8 DICHLORPROP
 R.T.: 7.973 min
 Delta R.T.: -0.055 min
 Response: 1052707
 Conc: N.D.

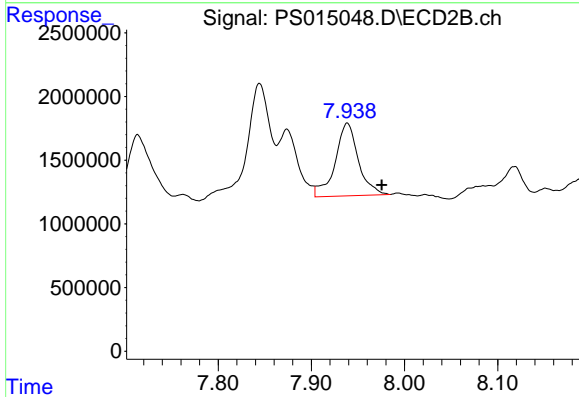


#8 DICHLORPROP
 R.T.: 7.714 min
 Delta R.T.: 0.038 min
 Response: 8232459
 Conc: 15.22 ng/ml

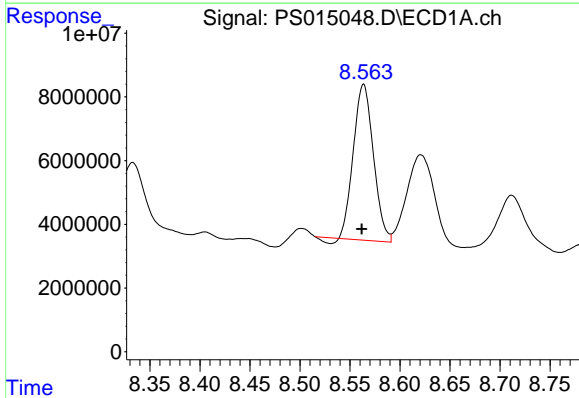


#9 2,4-D
 R.T.: 8.212 min
 Delta R.T.: -0.048 min
 Response: 8324125
 Conc: 4.68 ng/ml

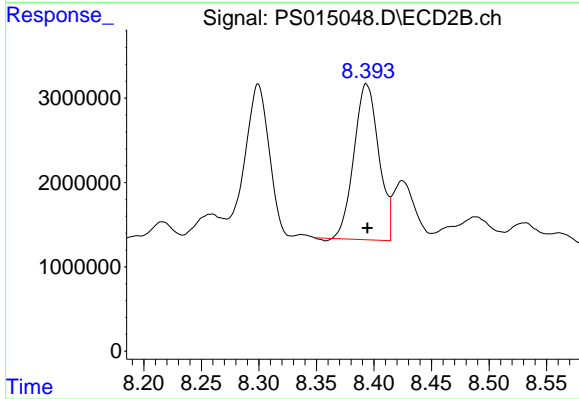
Instrument :
 ECD_S
 ClientSampleId :
 TP-2A



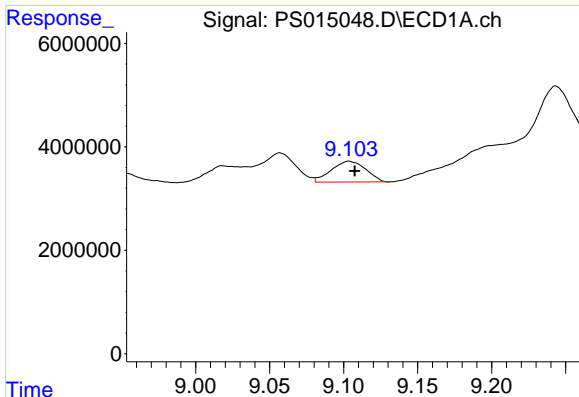
#9 2,4-D
 R.T.: 7.939 min
 Delta R.T.: -0.037 min
 Response: 9904731
 Conc: 16.27 ng/ml



#10 Pentachlorophenol
 R.T.: 8.564 min
 Delta R.T.: 0.002 min
 Response: 67281705
 Conc: 2.86 ng/ml



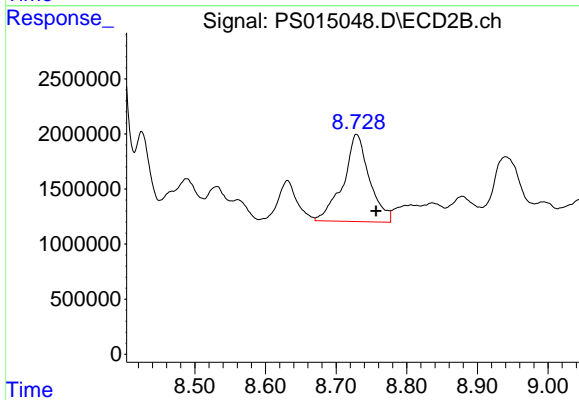
#10 Pentachlorophenol
 R.T.: 8.393 min
 Delta R.T.: 0.000 min
 Response: 27687720
 Conc: 3.84 ng/ml



#11 2,4,5-TP (SILVEX)

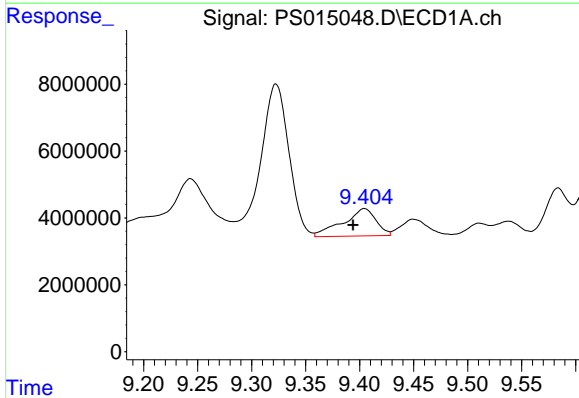
R.T.: 9.104 min
 Delta R.T.: -0.003 min
 Response: 6503112
 Conc: N.D.

Instrument :
 ECD_S
 ClientSampleId :
 TP-2A



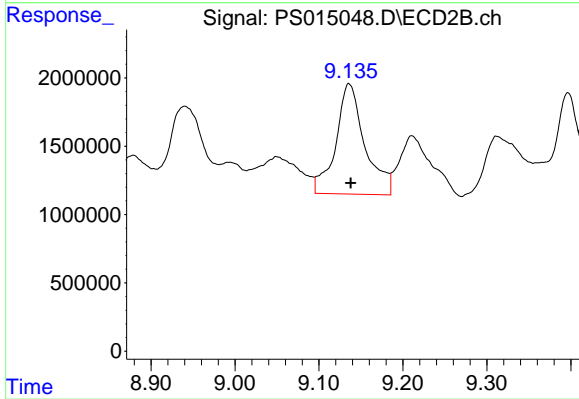
#11 2,4,5-TP (SILVEX)

R.T.: 8.729 min
 Delta R.T.: -0.027 min
 Response: 20407150
 Conc: 7.08 ng/ml



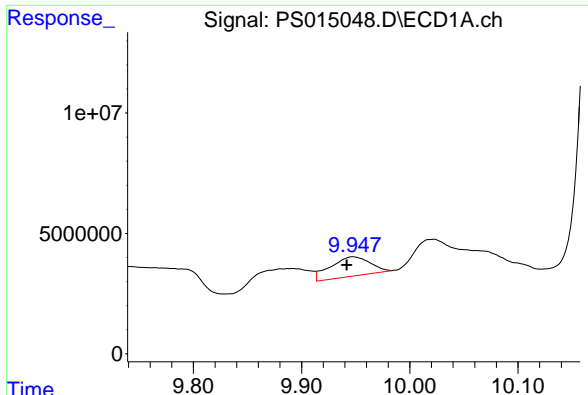
#12 2,4,5-T

R.T.: 9.404 min
 Delta R.T.: 0.010 min
 Response: 17449099
 Conc: 1.91 ng/ml



#12 2,4,5-T

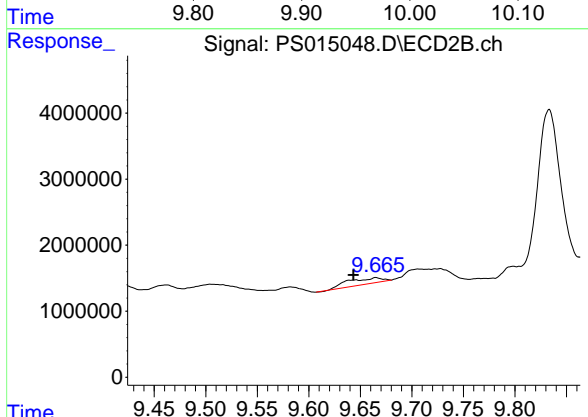
R.T.: 9.136 min
 Delta R.T.: -0.002 min
 Response: 19424565
 Conc: 7.28 ng/ml



#13 2,4-DB

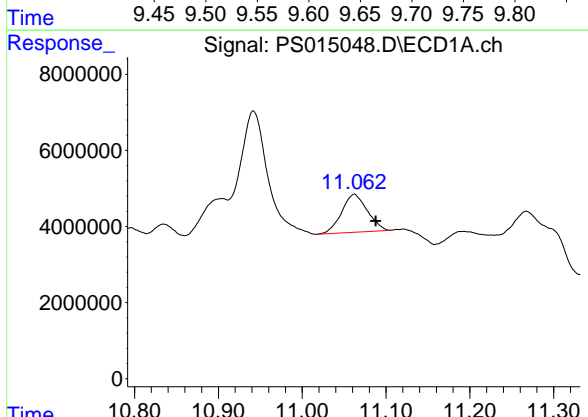
R.T.: 9.948 min
 Delta R.T.: 0.006 min
 Response: 20525147
 Conc: 11.83 ng/ml

Instrument :
 ECD_S
 ClientSampleId :
 TP-2A



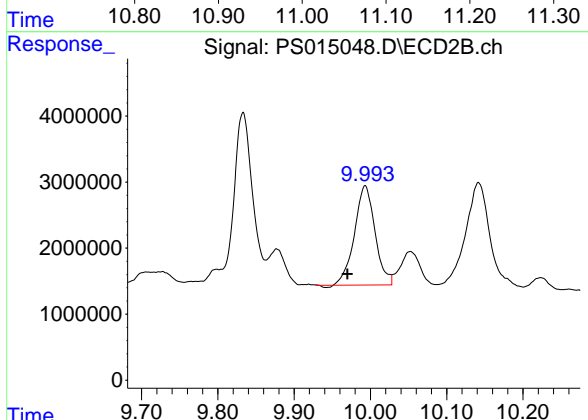
#13 2,4-DB

R.T.: 9.665 min
 Delta R.T.: 0.022 min
 Response: 2137903
 Conc: 6.06 ng/ml



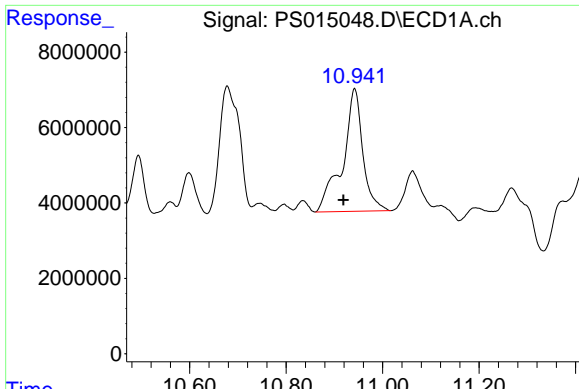
#14 DINOSEB

R.T.: 11.062 min
 Delta R.T.: -0.026 min
 Response: 21317826
 Conc: 2.97 ng/ml



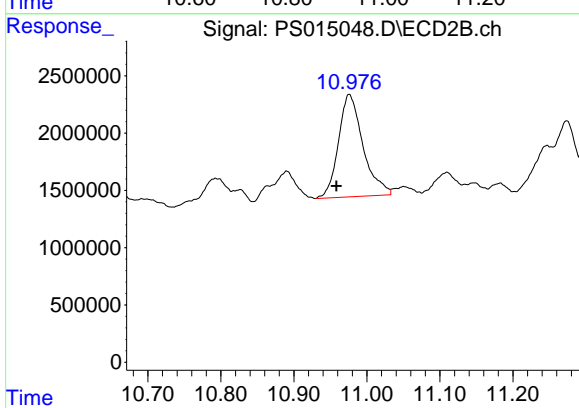
#14 DINOSEB

R.T.: 9.993 min
 Delta R.T.: 0.023 min
 Response: 28122940
 Conc: 13.73 ng/ml

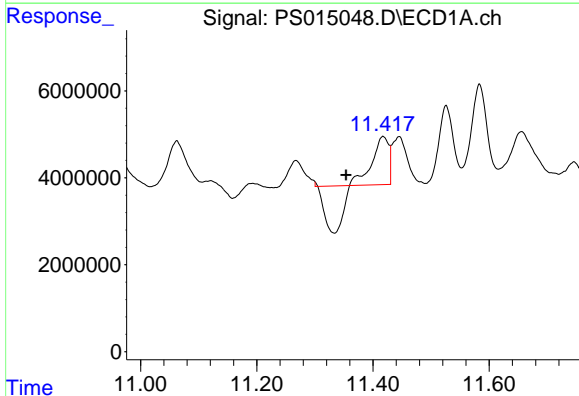


#15 Picloram
 R.T.: 10.942 min
 Delta R.T.: 0.023 min
 Response: 94272182
 Conc: 7.76 ng/ml

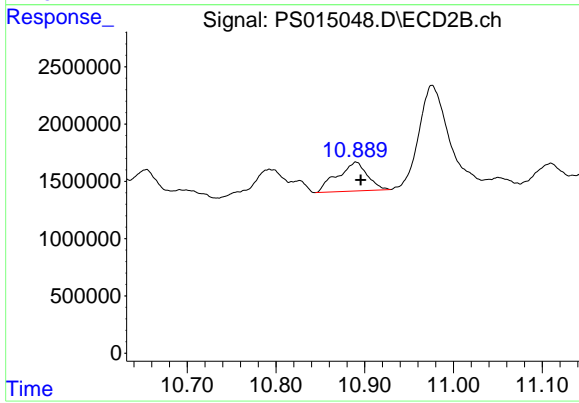
Instrument :
 ECD_S
 ClientSampled :
 TP-2A



#15 Picloram
 R.T.: 10.976 min
 Delta R.T.: 0.018 min
 Response: 20903661
 Conc: 5.25 ng/ml



#16 DCPA
 R.T.: 11.417 min
 Delta R.T.: 0.064 min
 Response: 1866315
 Conc: N.D.



#16 DCPA
 R.T.: 10.890 min
 Delta R.T.: -0.005 min
 Response: 5867796
 Conc: 1.38 ng/ml