

Data Path : Z:\pestpcbsrv\HPCHEM1\ECD_S\Data\PS052025\
 Data File : PS030307.D
 Signal(s) : Signal #1: ECD1A.ch Signal #2: ECD2B.ch
 Acq On : 20 May 2025 16:48
 Operator : AR\AJ
 Sample : Q2065-01
 Misc :
 ALS Vial : 7 Sample Multiplier: 1

Instrument :
 ECD_S
 ClientSampleId :
 VACTRUCK-728068

Integration File signal 1: autoint1.e
 Integration File signal 2: autoint2.e
 Quant Time: May 21 02:17:07 2025
 Quant Method : Z:\pestpcbsrv\HPCHEM1\ECD_S\Method\PS051225.M
 Quant Title : 8080.M
 QLast Update : Mon May 12 14:29:24 2025
 Response via : Initial Calibration
 Integrator: ChemStation

Volume Inj. : 1 µl
 Signal #1 Phase : ZB-MR2 Signal #2 Phase: ZB-MR2
 Signal #1 Info : 30M x 0.32mm x0.5 Signal #2 Info : 30M x 0.32mm x 0.25µm

Compound	RT#1	RT#2	Resp#1	Resp#2	ng/ml	ng/ml
System Monitoring Compounds						
4) S 2,4-DCAA	6.930	7.449	1191.2E6	332.1E6	418.286	415.077
Target Compounds						
1) T Dalapon	2.416f	2.502	660.4E6	1316.2E6	134.347	648.059 #
2) T 3,5-DICHL...	6.165f	6.466	-26685531	18013237	N.D.	15.451
3) T 4-Nitroph...	6.724	6.963f	1595978	5065208	<MDL	4.852 #
5) T DICAMBA	7.103	7.644	2856172	215.5E6	<MDL	45.590 #
6) T MCPP	7.328f	7.770	217.6E6	18048758	29.877	9.810 #
7) T MCPA	7.459	7.977	138.8E6	19812975	13.370	7.512 #
8) T DICHLORPROP	7.802	8.345	110.8E6	153.8E6	37.925	130.212 #
9) T 2,4-D	8.001	8.650	182.0E6	64097149	55.494	49.668
10) T Pentachlo...	8.282	9.138	101.5E6	48677533	2.507	1.972
11) T 2,4,5-TP ...	8.842	9.507	-12500138	14814556	N.D.	1.504
12) T 2,4,5-T	9.174f	9.963f	142.0E6	87914363	8.601	9.552
13) T 2,4-DB	9.698	10.506	200.5E6	29433011	76.825	29.659 #
14) T DINOSEB	10.844	10.876	36315761	235.9E6	3.175	34.534 #
15) T Picloram	10.669	11.897	343.7E6	148.0E6	16.072	10.519 #
16) T DCPA	11.152	11.897	38424336	148.0E6	1.930	10.957 #

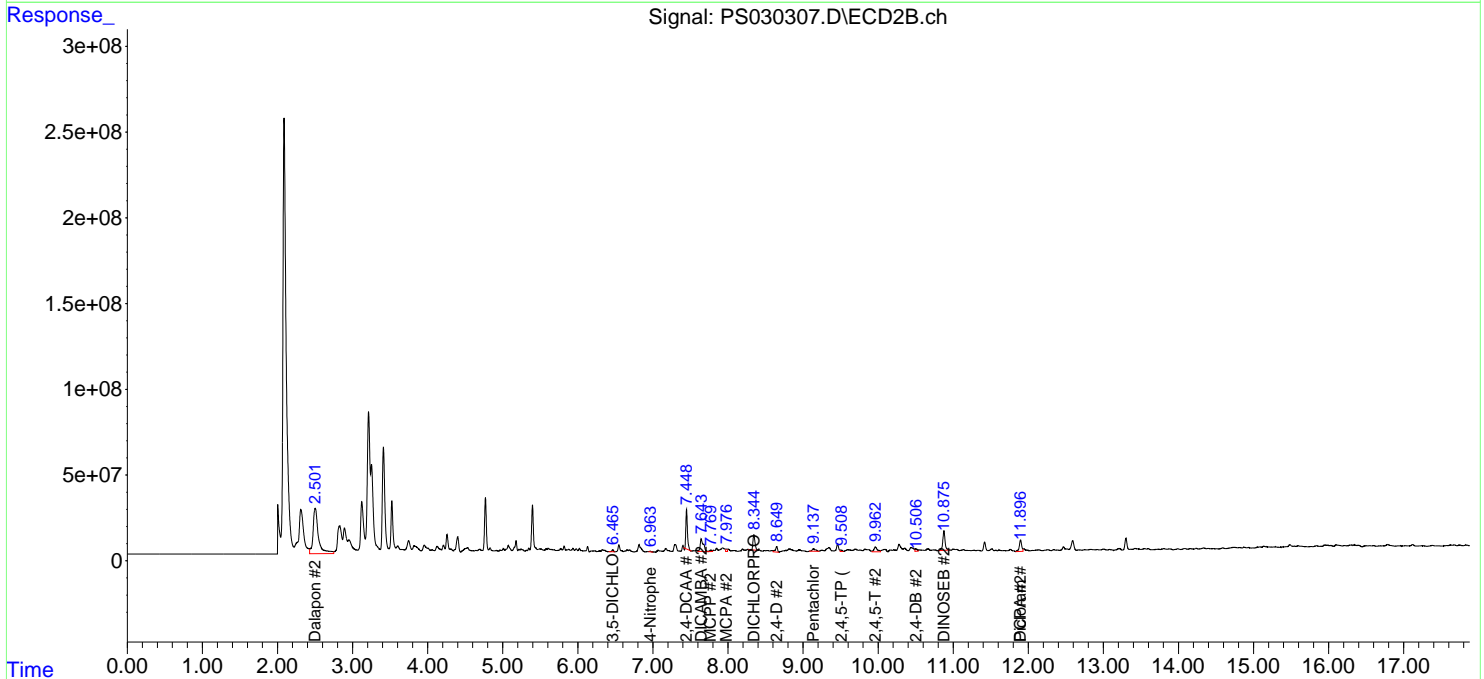
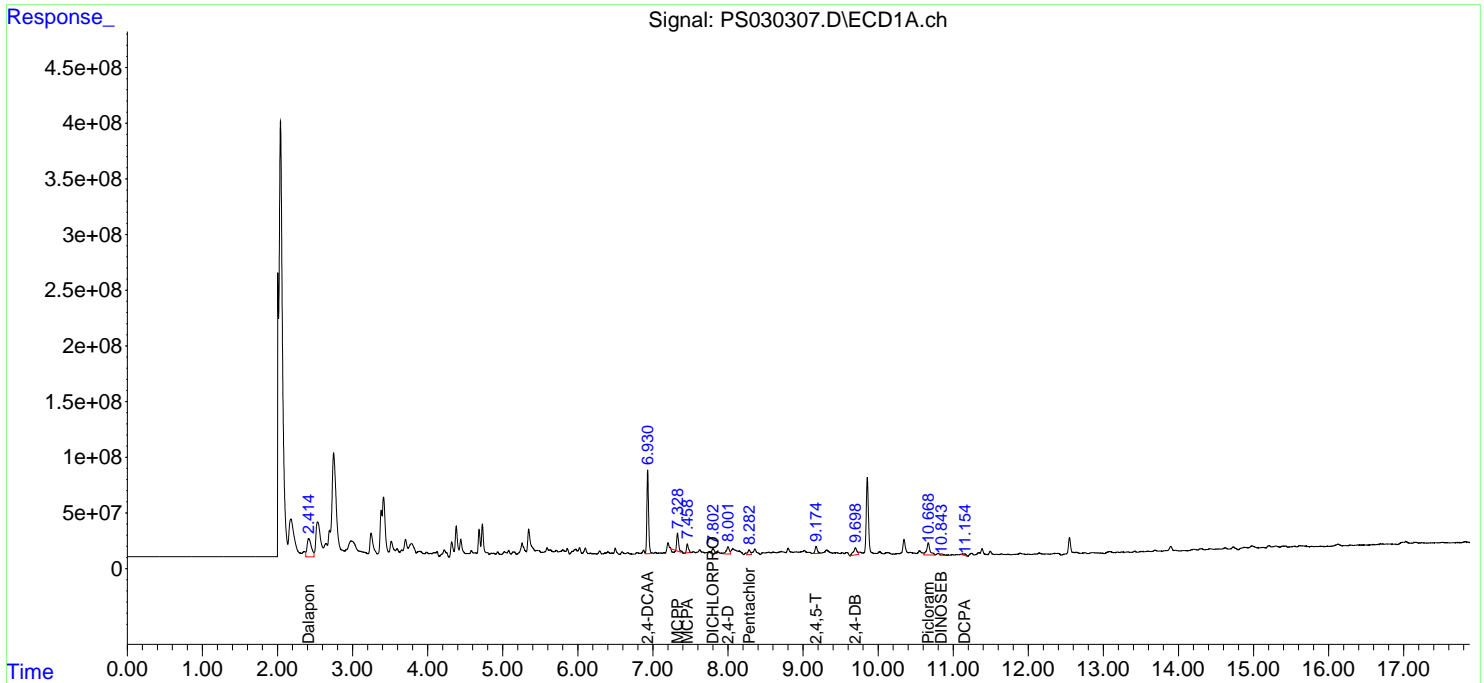
(f)=RT Delta > 1/2 Window (#)=Amounts differ by > 25% (m)=manual int.

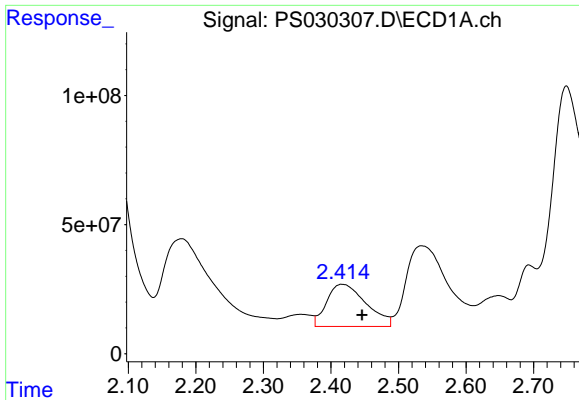
Data Path : Z:\pestpcbsrv\HPCHEM1\ECD_S\Data\PS052025\
 Data File : PS030307.D
 Signal(s) : Signal #1: ECD1A.ch Signal #2: ECD2B.ch
 Acq On : 20 May 2025 16:48
 Operator : AR\AJ
 Sample : Q2065-01
 Misc :
 ALS Vial : 7 Sample Multiplier: 1

Instrument :
 ECD_S
 ClientSampleId :
 VACTRUCK-728068

Integration File signal 1: autoint1.e
 Integration File signal 2: autoint2.e
 Quant Time: May 21 02:17:07 2025
 Quant Method : Z:\pestpcbsrv\HPCHEM1\ECD_S\Method\PS051225.M
 Quant Title : 8080.M
 QLast Update : Mon May 12 14:29:24 2025
 Response via : Initial Calibration
 Integrator: ChemStation

Volume Inj. : 1 µl
 Signal #1 Phase : ZB-MR1 Signal #2 Phase: ZB-MR2
 Signal #1 Info : 30M x 0.32mm x0.5 Signal #2 Info : 30M x 0.32mm x 0.25µm

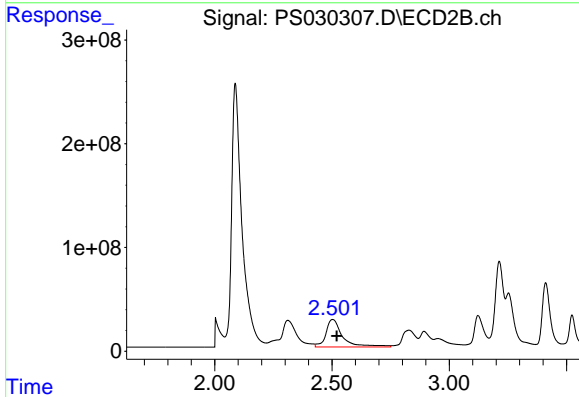




#1 Dalapon

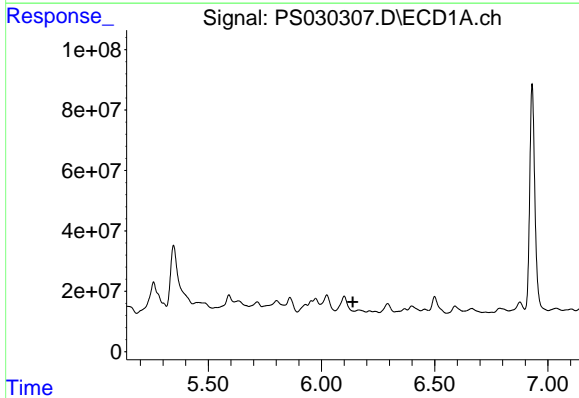
R.T.: 2.416 min
 Delta R.T.: -0.030 min
 Response: 660363985
 Conc: 134.35 ng/ml

Instrument :
 ECD_S
 ClientSampleId :
 VACTRUCK-728068



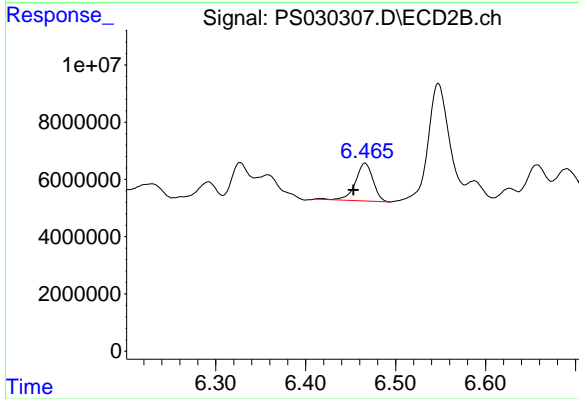
#1 Dalapon

R.T.: 2.502 min
 Delta R.T.: -0.018 min
 Response: 1316240687
 Conc: 648.06 ng/ml



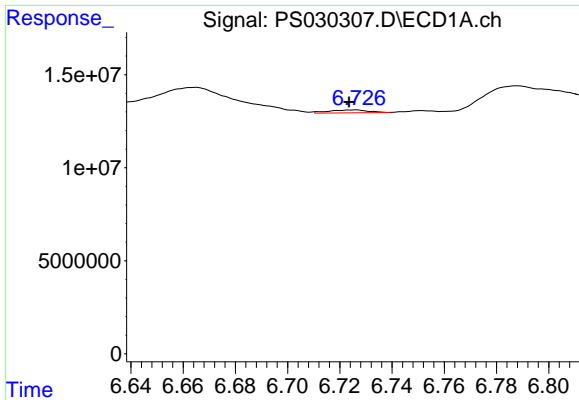
#2 3,5-DICHLOROBENZOIC ACID

R.T.: 6.165 min
 Delta R.T.: 0.027 min
 Response: -26685531
 Conc: N.D.



#2 3,5-DICHLOROBENZOIC ACID

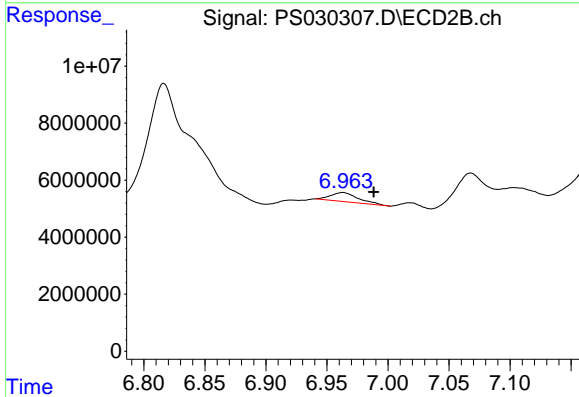
R.T.: 6.466 min
 Delta R.T.: 0.013 min
 Response: 18013237
 Conc: 15.45 ng/ml



#3 4-Nitrophenol

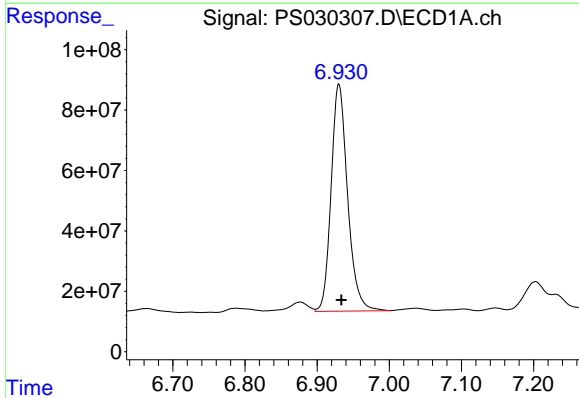
R.T.: 6.724 min
 Delta R.T.: 0.000 min
 Response: 1595978
 Conc: N.D.

Instrument :
 ECD_S
 ClientSampleId :
 VACTRUCK-728068



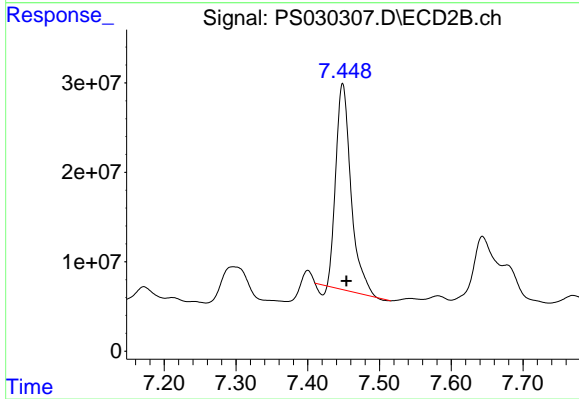
#3 4-Nitrophenol

R.T.: 6.963 min
 Delta R.T.: -0.026 min
 Response: 5065208
 Conc: 4.85 ng/ml



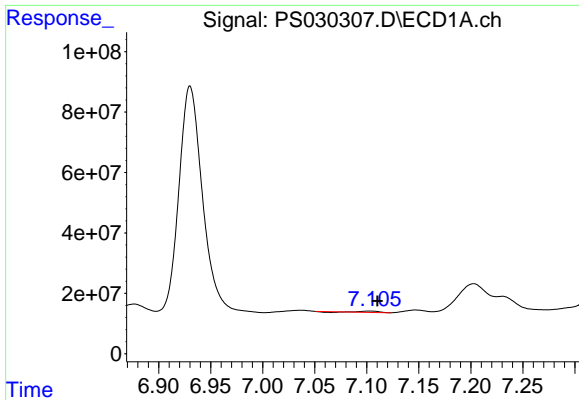
#4 2,4-DCAA

R.T.: 6.930 min
 Delta R.T.: -0.003 min
 Response: 1191198128
 Conc: 418.29 ng/ml



#4 2,4-DCAA

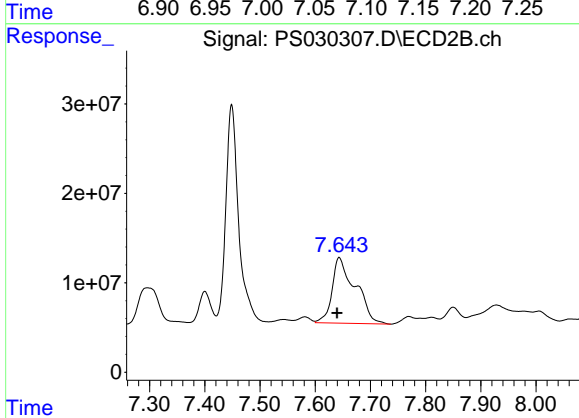
R.T.: 7.449 min
 Delta R.T.: -0.005 min
 Response: 332146295
 Conc: 415.08 ng/ml



#5 DICAMBA

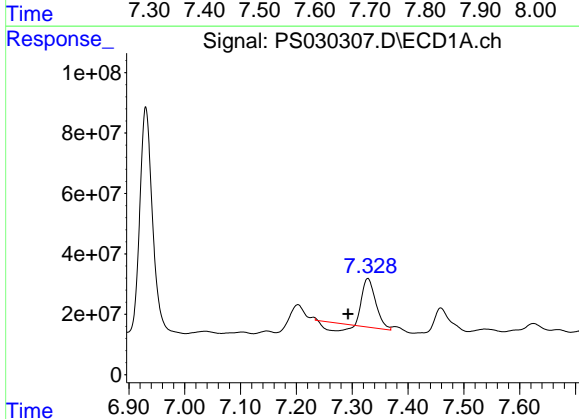
R.T.: 7.103 min
 Delta R.T.: -0.007 min
 Response: 2856172
 Conc: N.D.

Instrument :
 ECD_S
 ClientSampleId :
 VACTRUCK-728068



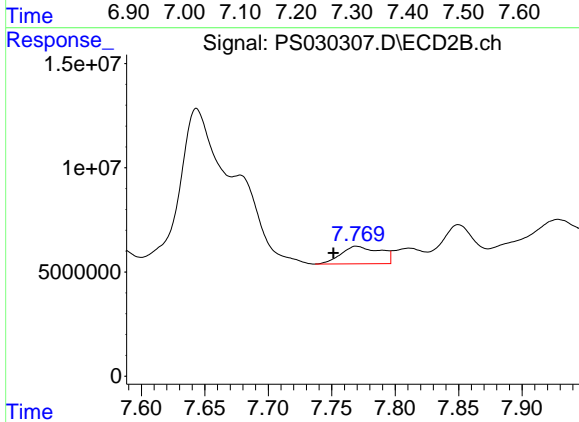
#5 DICAMBA

R.T.: 7.644 min
 Delta R.T.: 0.004 min
 Response: 215549110
 Conc: 45.59 ng/ml



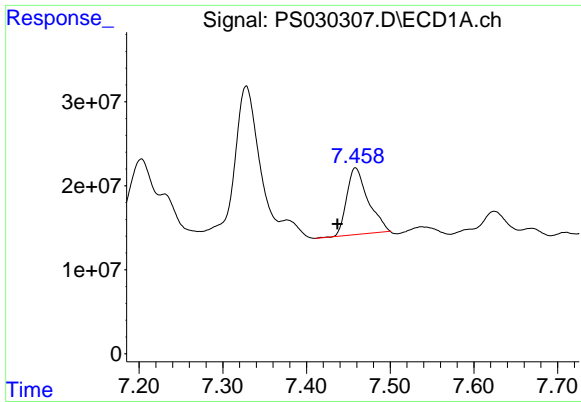
#6 MCPP

R.T.: 7.328 min
 Delta R.T.: 0.035 min
 Response: 217585546
 Conc: 29.88 ug/ml



#6 MCPP

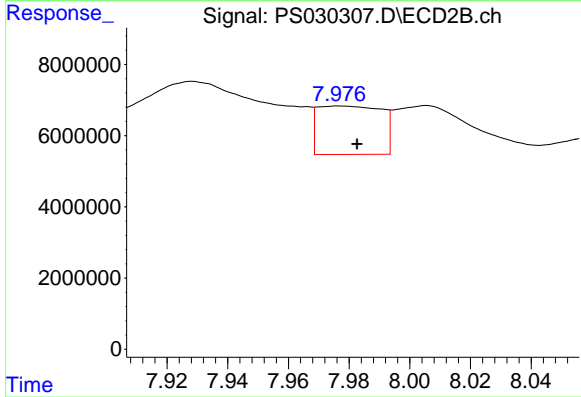
R.T.: 7.770 min
 Delta R.T.: 0.018 min
 Response: 18048758
 Conc: 9.81 ug/ml



#7 MCPA

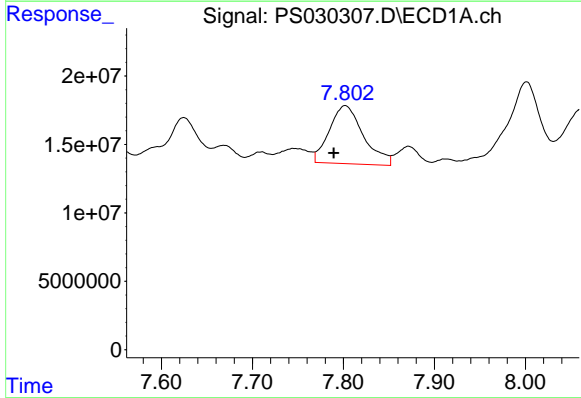
R.T.: 7.459 min
 Delta R.T.: 0.022 min
 Response: 138797754
 Conc: 13.37 ug/ml

Instrument :
 ECD_S
 ClientSampleId :
 VACTRUCK-728068



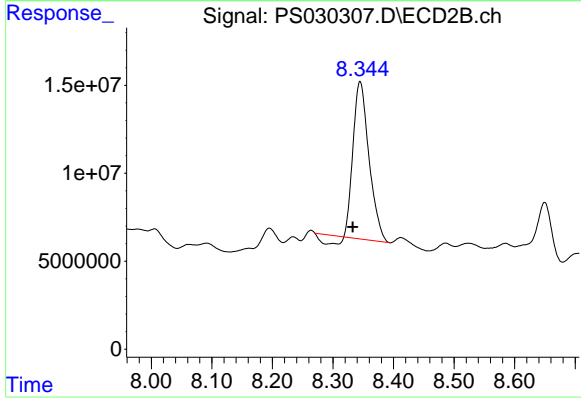
#7 MCPA

R.T.: 7.977 min
 Delta R.T.: -0.006 min
 Response: 19812975
 Conc: 7.51 ug/ml



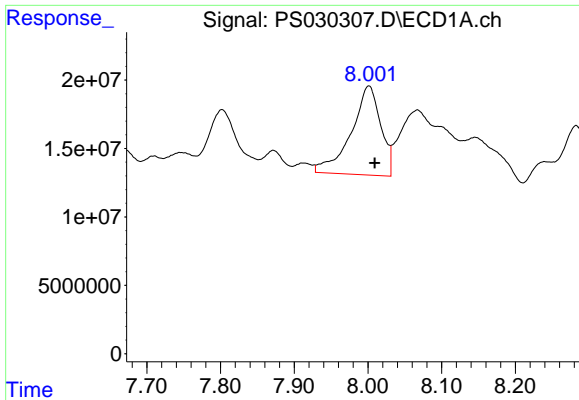
#8 DICHLORPROP

R.T.: 7.802 min
 Delta R.T.: 0.013 min
 Response: 110793209
 Conc: 37.93 ng/ml



#8 DICHLORPROP

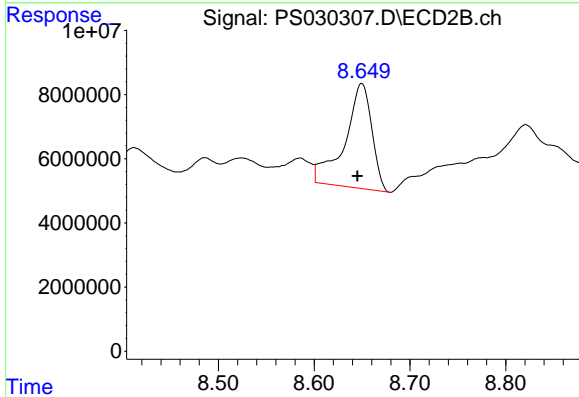
R.T.: 8.345 min
 Delta R.T.: 0.012 min
 Response: 153836233
 Conc: 130.21 ng/ml



#9 2,4-D

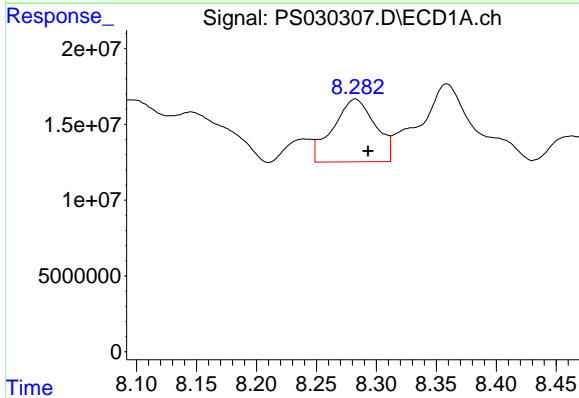
R.T.: 8.001 min
 Delta R.T.: -0.008 min
 Response: 181961609
 Conc: 55.49 ng/ml

Instrument :
 ECD_S
 ClientSampleId :
 VACTRUCK-728068



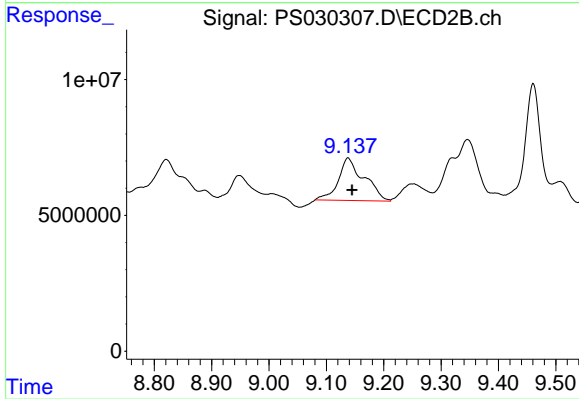
#9 2,4-D

R.T.: 8.650 min
 Delta R.T.: 0.004 min
 Response: 64097149
 Conc: 49.67 ng/ml



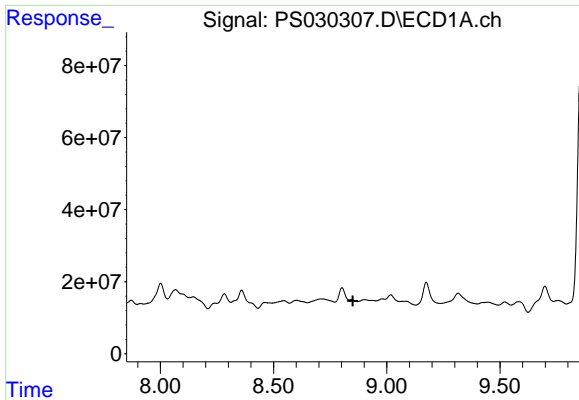
#10 Pentachlorophenol

R.T.: 8.282 min
 Delta R.T.: -0.010 min
 Response: 101544373
 Conc: 2.51 ng/ml



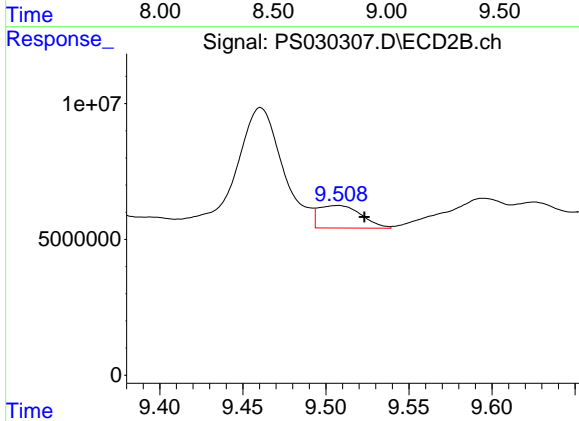
#10 Pentachlorophenol

R.T.: 9.138 min
 Delta R.T.: -0.007 min
 Response: 48677533
 Conc: 1.97 ng/ml

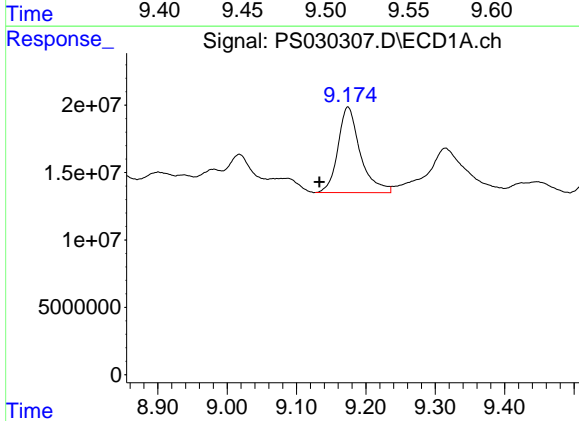


#11 2,4,5-TP (SILVEX)
 R.T.: 8.842 min
 Delta R.T.: -0.009 min
 Response: -12500138
 Conc: N.D.

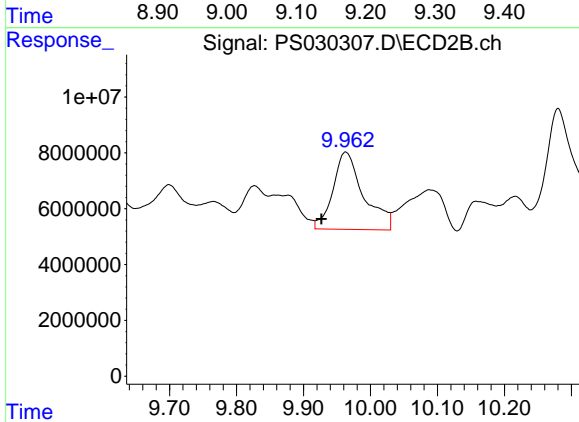
Instrument :
 ECD_S
 ClientSampleId :
 VACTRUCK-728068



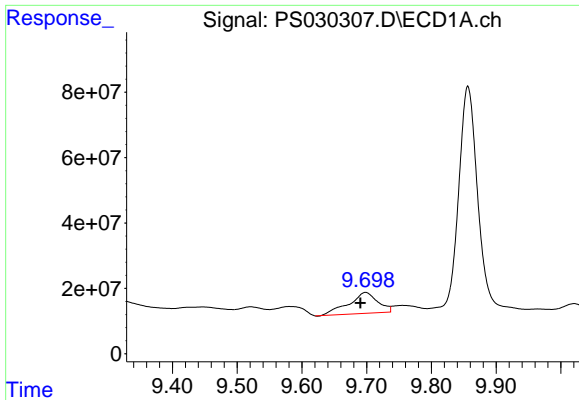
#11 2,4,5-TP (SILVEX)
 R.T.: 9.507 min
 Delta R.T.: -0.016 min
 Response: 14814556
 Conc: 1.50 ng/ml



#12 2,4,5-T
 R.T.: 9.174 min
 Delta R.T.: 0.041 min
 Response: 142044367
 Conc: 8.60 ng/ml



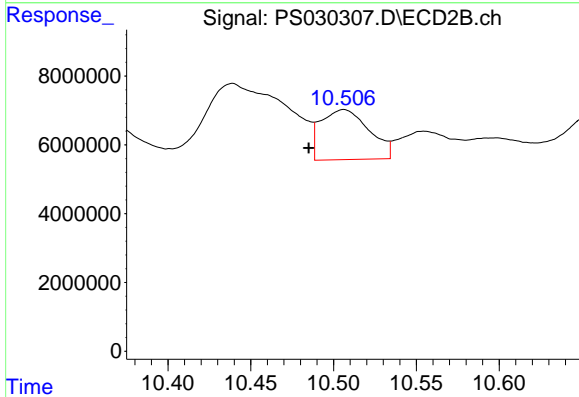
#12 2,4,5-T
 R.T.: 9.963 min
 Delta R.T.: 0.036 min
 Response: 87914363
 Conc: 9.55 ng/ml



#13 2,4-DB

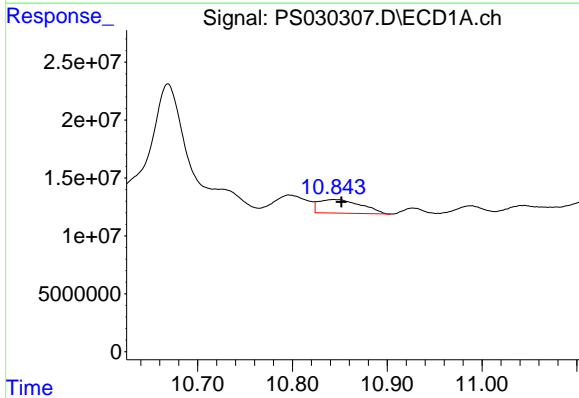
R.T.: 9.698 min
 Delta R.T.: 0.008 min
 Response: 200494616
 Conc: 76.82 ng/ml

Instrument :
 ECD_S
 ClientSampleId :
 VACTRUCK-728068



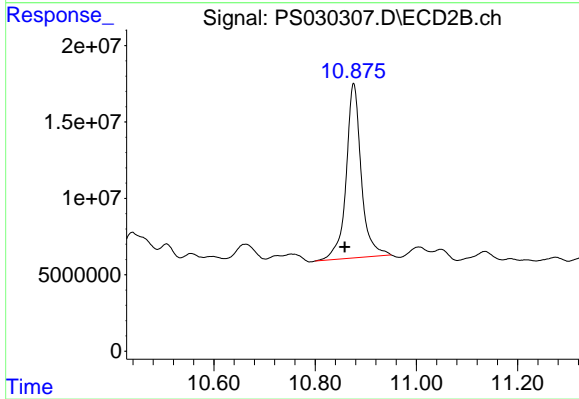
#13 2,4-DB

R.T.: 10.506 min
 Delta R.T.: 0.021 min
 Response: 29433011
 Conc: 29.66 ng/ml



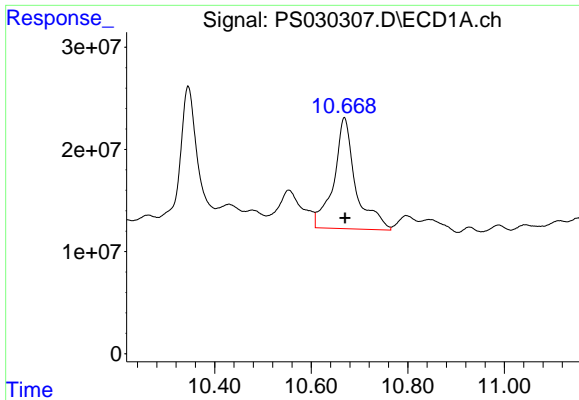
#14 DINOSEB

R.T.: 10.844 min
 Delta R.T.: -0.007 min
 Response: 36315761
 Conc: 3.18 ng/ml



#14 DINOSEB

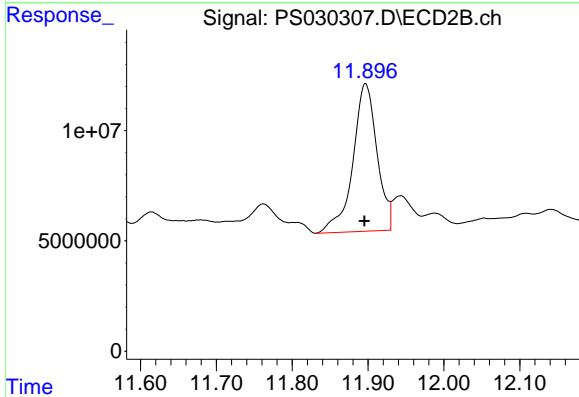
R.T.: 10.876 min
 Delta R.T.: 0.017 min
 Response: 235936575
 Conc: 34.53 ng/ml



#15 Picloram

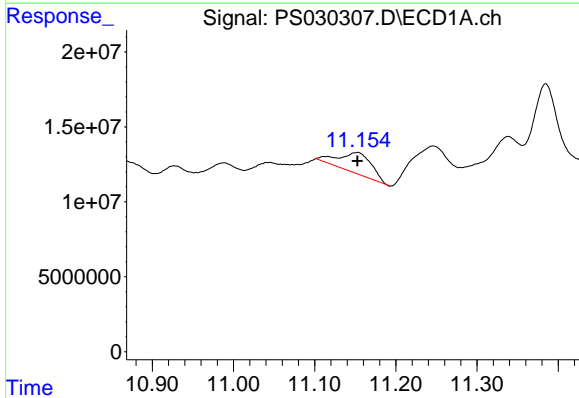
R.T.: 10.669 min
 Delta R.T.: -0.002 min
 Response: 343727444
 Conc: 16.07 ng/ml

Instrument :
 ECD_S
 ClientSampleId :
 VACTRUCK-728068



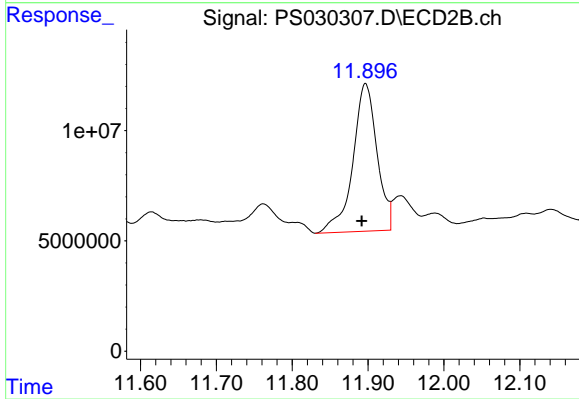
#15 Picloram

R.T.: 11.897 min
 Delta R.T.: 0.002 min
 Response: 148038626
 Conc: 10.52 ng/ml



#16 DCPA

R.T.: 11.152 min
 Delta R.T.: 0.000 min
 Response: 38424336
 Conc: 1.93 ng/ml



#16 DCPA

R.T.: 11.897 min
 Delta R.T.: 0.005 min
 Response: 148038626
 Conc: 10.96 ng/ml