

Data Path : Z:\pestpcbsrv\HPCHEM1\ECD\_S\Data\PS052223\  
 Data File : PS023074.D  
 Signal(s) : Signal #1: ECD1A.ch Signal #2: ECD2B.ch  
 Acq On : 22 May 2023 19:52  
 Operator : AR\AJ  
 Sample : 02848-10  
 Misc :  
 ALS Vial : 16 Sample Multiplier: 1

Instrument :  
 ECD\_S  
 ClientSampleId :

Integration File signal 1: autoint1.e  
 Integration File signal 2: autoint2.e  
 Quant Time: May 22 21:45:11 2023  
 Quant Method : Z:\pestpcbsrv\HPCHEM1\ECD\_S\Method\PS051023.M  
 Quant Title : 8080.M  
 QLast Update : Wed May 10 16:09:19 2023  
 Response via : Initial Calibration  
 Integrator: ChemStation

Volume Inj. : 2 µl  
 Signal #1 Phase : Rtx-CLPesticides Signal #2 Phase: Rtx-CLPesticides2  
 Signal #1 Info : 30M x 0.32mm x0.5 Signal #2 Info : 30M x 0.32mm x 0.25µm

Compound	RT#1	RT#2	Resp#1	Resp#2	ng/ml	ng/ml
System Monitoring Compounds						
4) S 2,4-DCAA	6.483	6.856	651.7E6	209.5E6	428.438	373.348
Target Compounds						
1) T Dalapon	2.520	2.548	54704341	105.0E6	33.833	121.626 #
2) T 3,5-DICHL...	0.000	6.038	0	2100605	N.D.	2.477
3) T 4-Nitroph...	6.334	6.486	11314187	7907200	10.747	23.828 #
5) T DICAMBA	6.656	7.057	-998470	6758331	N.D.	2.713
6) T MCPP	6.780	7.108	1295771	10346166	<MDL	5.848 #
7) T MCPA	6.953	7.324	50620863	19037564	7.231	7.190
8) T DICHLORPROP	7.225	7.661	47952830	20354780	25.587	32.891 #
9) T 2,4-D	7.455	7.918	9803566	3935461	4.236	5.501 #
10) T Pentachlo...	7.678	8.362	30083460	3913592	1.124	<MDL #
11) T 2,4,5-TP ...	8.212	8.715	6383811	2604463	<MDL	<MDL #
12) T 2,4,5-T	8.503	9.079	14377978	24058345	1.244	7.493 #
13) T 2,4-DB	8.997	9.611	122.6E6	10289081	52.241	26.795 #
14) T DINOSEB	10.046	9.944	5029763	5589784	<MDL	2.363 #
15) T Picloram	9.887	10.900	62572626	26332450	3.649	6.183 #
16) T DCPA	10.342	10.864	112.8E6	11827960	8.645	3.165 #

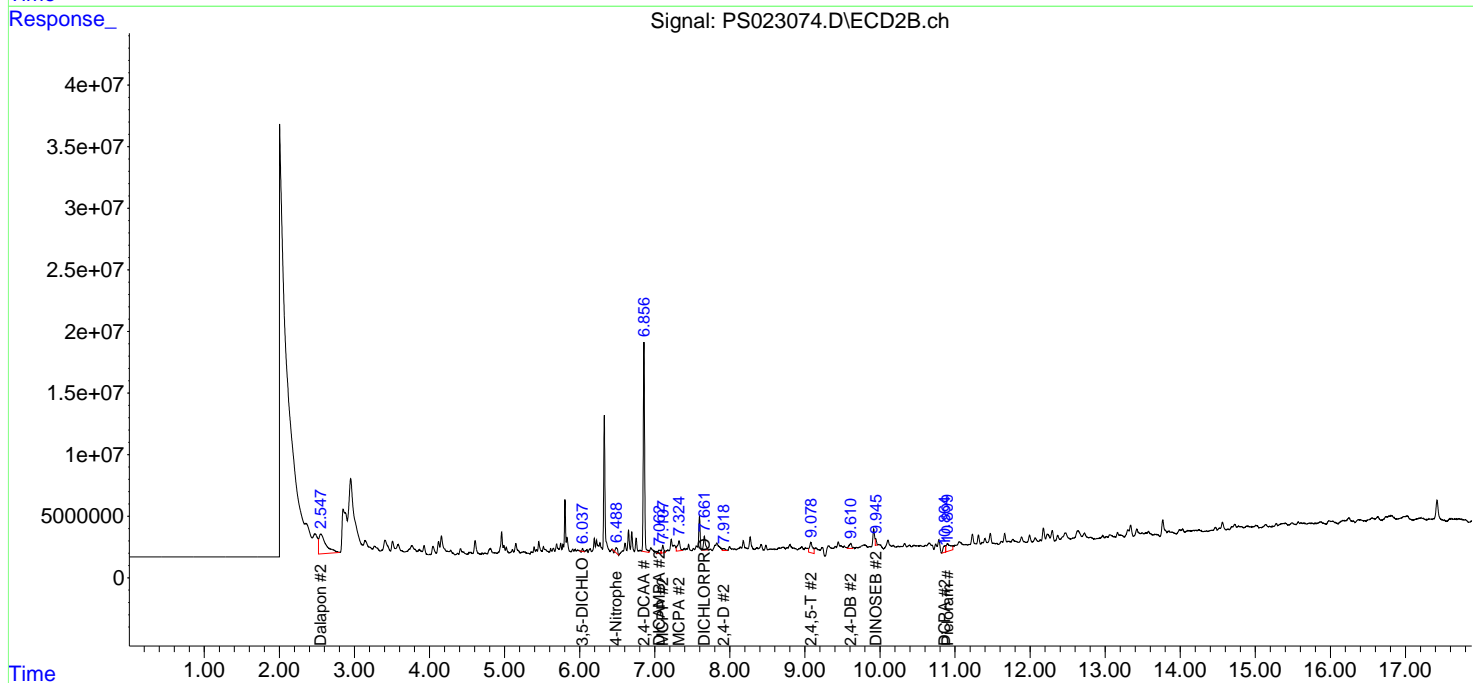
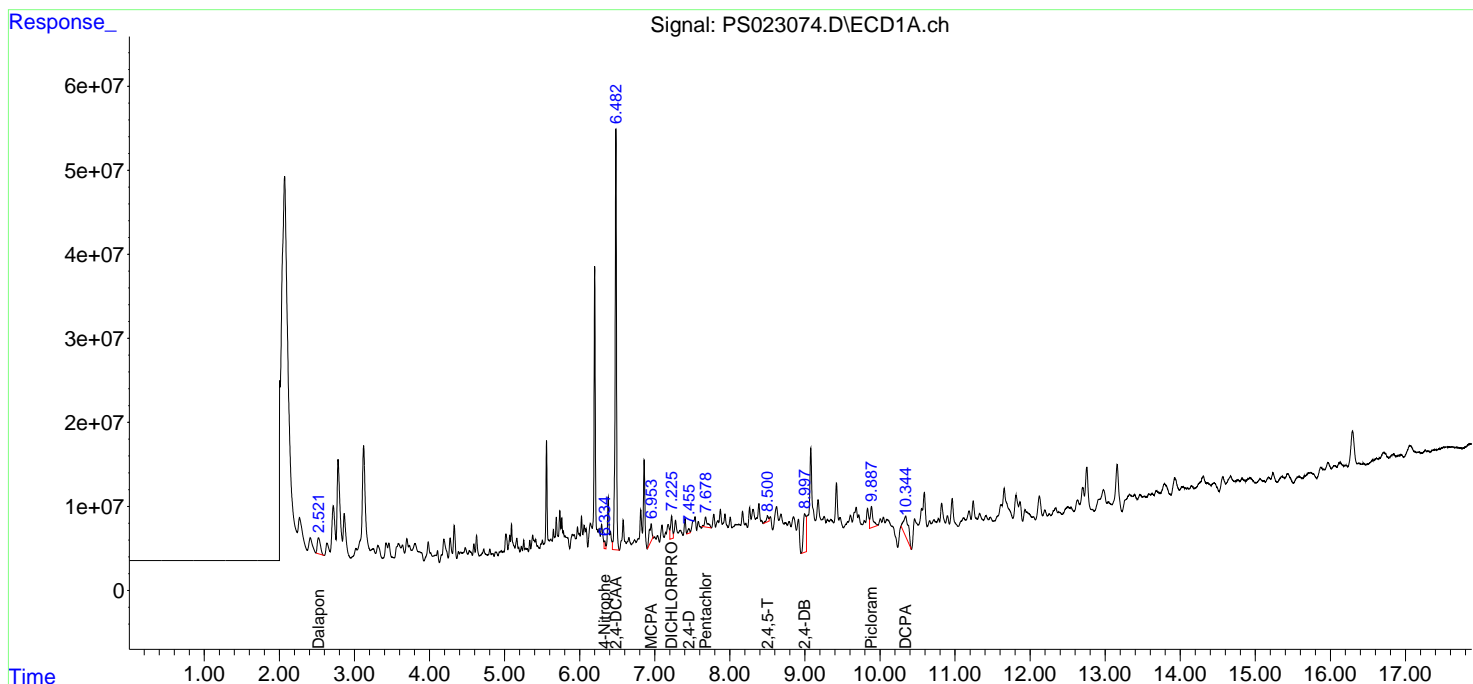
(f)=RT Delta > 1/2 Window (#)=Amounts differ by > 25% (m)=manual int.

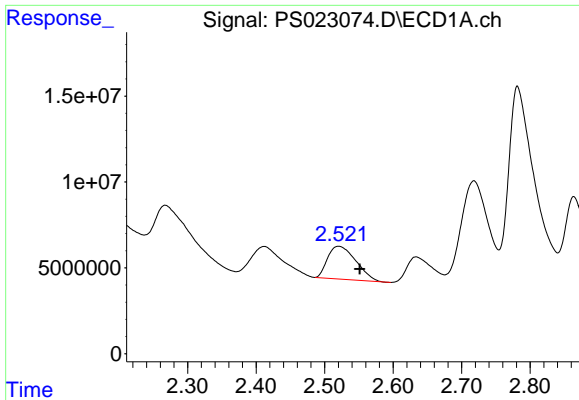
Data Path : Z:\pestpcbsrv\HPCHEM1\ECD\_S\Data\PS052223\  
 Data File : PS023074.D  
 Signal(s) : Signal #1: ECD1A.ch Signal #2: ECD2B.ch  
 Acq On : 22 May 2023 19:52  
 Operator : AR\AJ  
 Sample : 02848-10  
 Misc :  
 ALS Vial : 16 Sample Multiplier: 1

Instrument :  
 ECD\_S  
 ClientSampleId :

Integration File signal 1: autoint1.e  
 Integration File signal 2: autoint2.e  
 Quant Time: May 22 21:45:11 2023  
 Quant Method : Z:\pestpcbsrv\HPCHEM1\ECD\_S\Method\PS051023.M  
 Quant Title : 8080.M  
 QLast Update : Wed May 10 16:09:19 2023  
 Response via : Initial Calibration  
 Integrator: ChemStation

Volume Inj. : 2 µl  
 Signal #1 Phase : Rtx-CLPesticides Signal #2 Phase: Rtx-CLPesticides2  
 Signal #1 Info : 30M x 0.32mm x0.5 Signal #2 Info : 30M x 0.32mm x 0.25µm

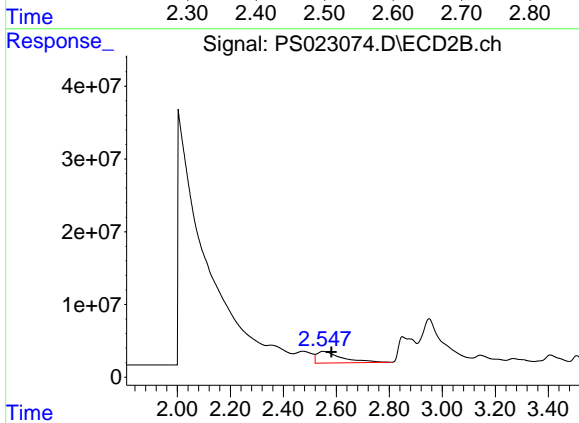




#1 Dalapon

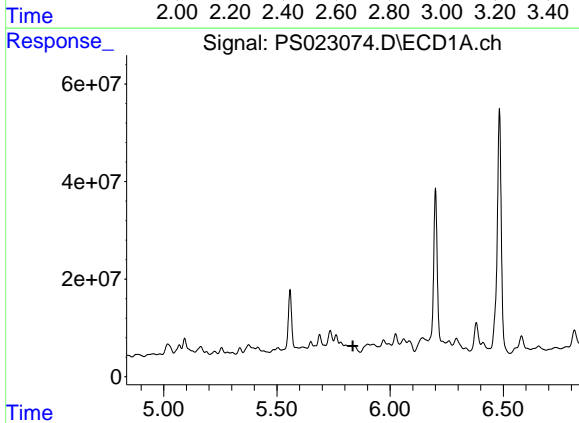
R.T.: 2.520 min  
 Delta R.T.: -0.031 min  
 Response: 54704341  
 Conc: 33.83 ng/ml

Instrument :  
 ECD\_S  
 ClientSampleId :



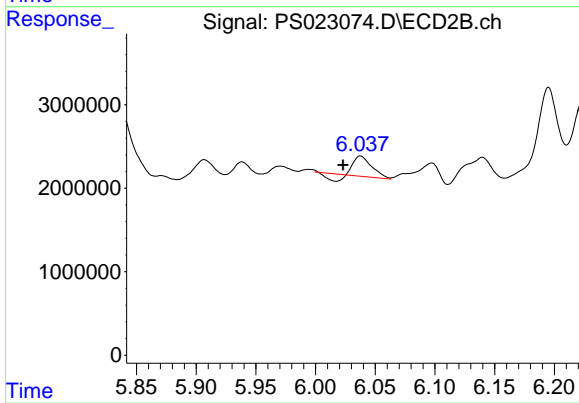
#1 Dalapon

R.T.: 2.548 min  
 Delta R.T.: -0.033 min  
 Response: 104982442  
 Conc: 121.63 ng/ml



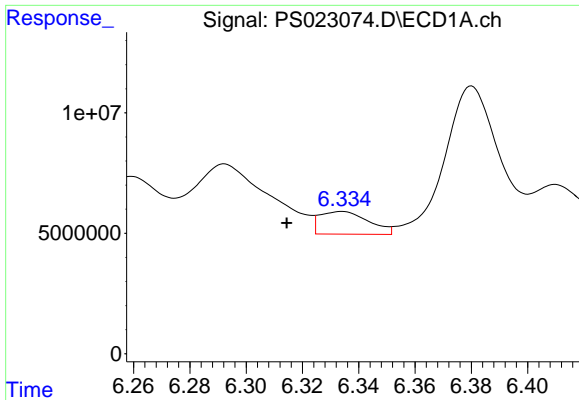
#2 3,5-DICHLOROBENZOIC ACID

R.T.: 0.000 min  
 Exp R.T. : 5.835 min  
 Response: 0  
 Conc: N.D.



#2 3,5-DICHLOROBENZOIC ACID

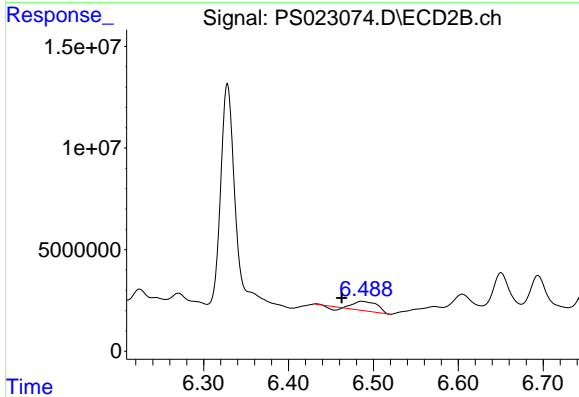
R.T.: 6.038 min  
 Delta R.T.: 0.015 min  
 Response: 2100605  
 Conc: 2.48 ng/ml



#3 4-Nitrophenol

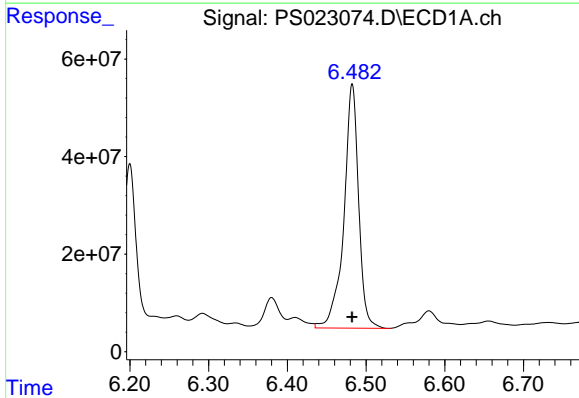
R.T.: 6.334 min  
 Delta R.T.: 0.019 min  
 Response: 11314187  
 Conc: 10.75 ng/ml

Instrument :  
 ECD\_S  
 ClientSampleId :



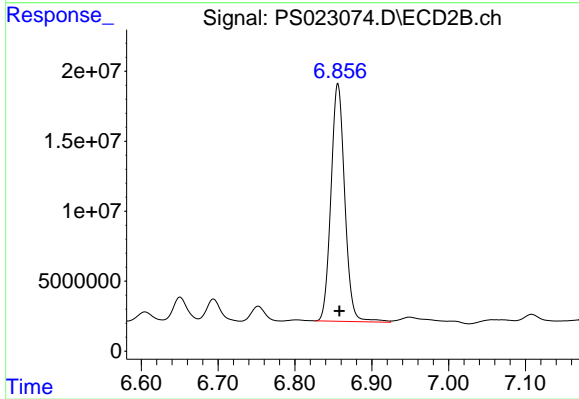
#3 4-Nitrophenol

R.T.: 6.486 min  
 Delta R.T.: 0.024 min  
 Response: 7907200  
 Conc: 23.83 ng/ml



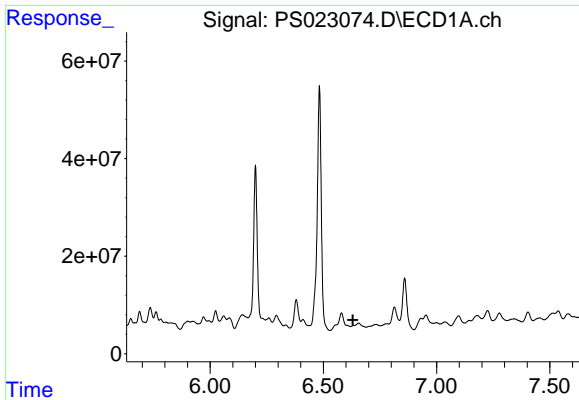
#4 2,4-DCAA

R.T.: 6.483 min  
 Delta R.T.: 0.000 min  
 Response: 651652315  
 Conc: 428.44 ng/ml



#4 2,4-DCAA

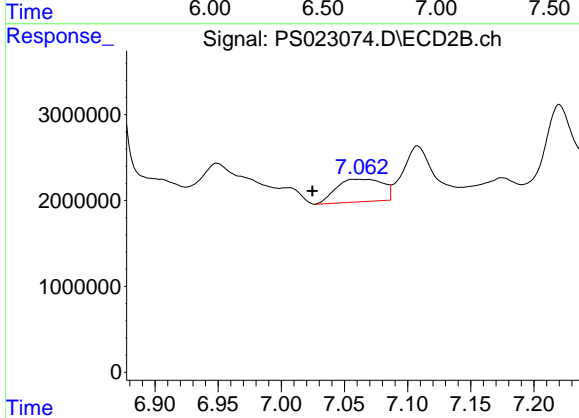
R.T.: 6.856 min  
 Delta R.T.: -0.002 min  
 Response: 209491566  
 Conc: 373.35 ng/ml



#5 DICAMBA

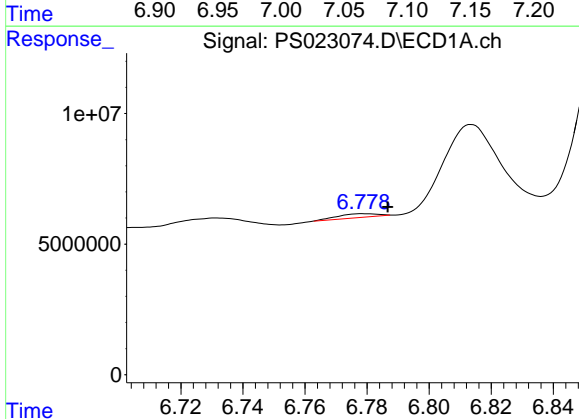
R.T.: 6.656 min  
 Delta R.T.: 0.025 min  
 Response: -998470  
 Conc: N.D.

Instrument :  
 ECD\_S  
 ClientSampleId :



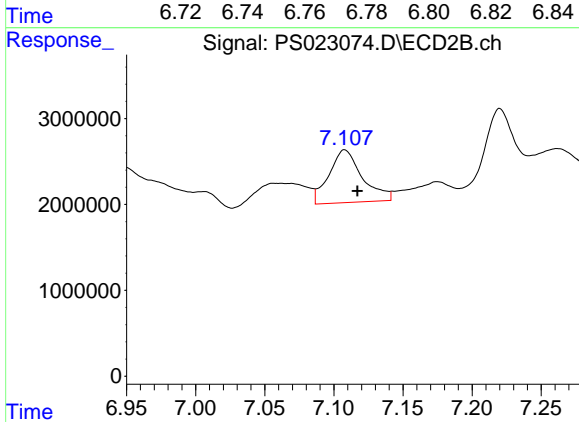
#5 DICAMBA

R.T.: 7.057 min  
 Delta R.T.: 0.032 min  
 Response: 6758331  
 Conc: 2.71 ng/ml



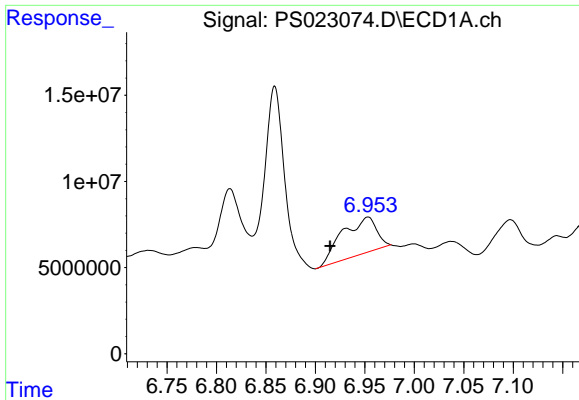
#6 MCP

R.T.: 6.780 min  
 Delta R.T.: -0.007 min  
 Response: 1295771  
 Conc: N.D.



#6 MCP

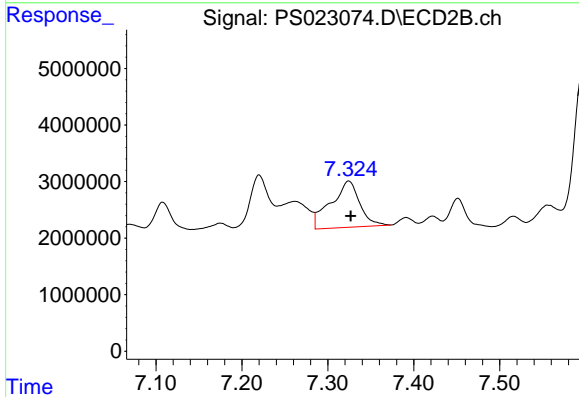
R.T.: 7.108 min  
 Delta R.T.: -0.009 min  
 Response: 10346166  
 Conc: 5.85 ug/ml



#7 MCPA

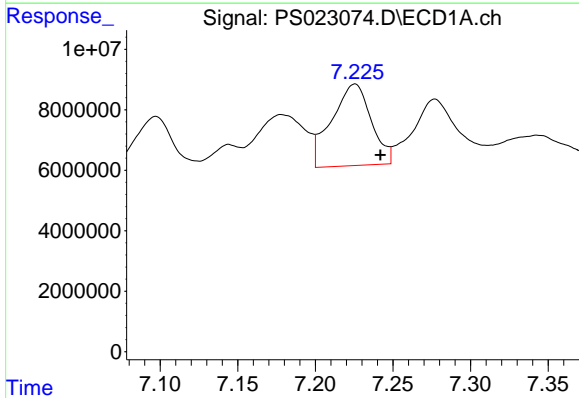
R.T.: 6.953 min  
 Delta R.T.: 0.038 min  
 Response: 50620863  
 Conc: 7.23 ug/ml

Instrument :  
 ECD\_S  
 ClientSampleId :



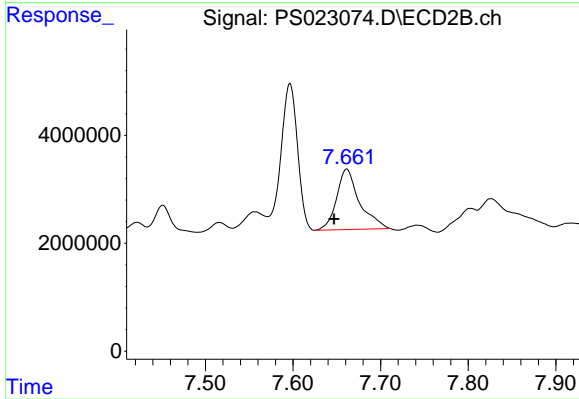
#7 MCPA

R.T.: 7.324 min  
 Delta R.T.: -0.002 min  
 Response: 19037564  
 Conc: 7.19 ug/ml



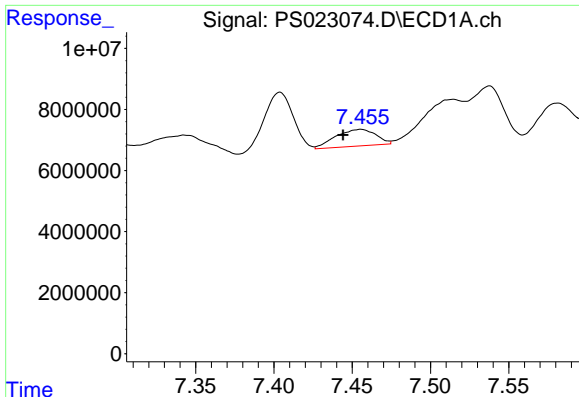
#8 DICHLORPROP

R.T.: 7.225 min  
 Delta R.T.: -0.017 min  
 Response: 47952830  
 Conc: 25.59 ng/ml



#8 DICHLORPROP

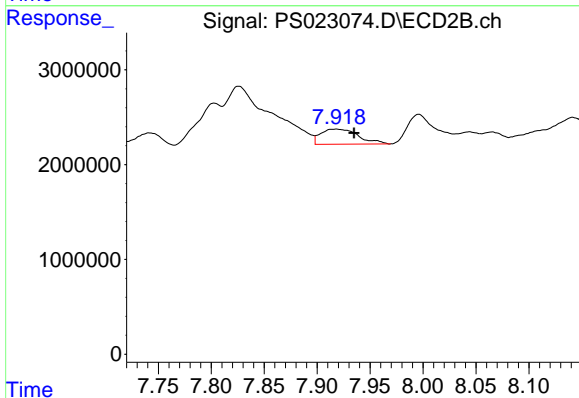
R.T.: 7.661 min  
 Delta R.T.: 0.014 min  
 Response: 20354780  
 Conc: 32.89 ng/ml



#9 2,4-D

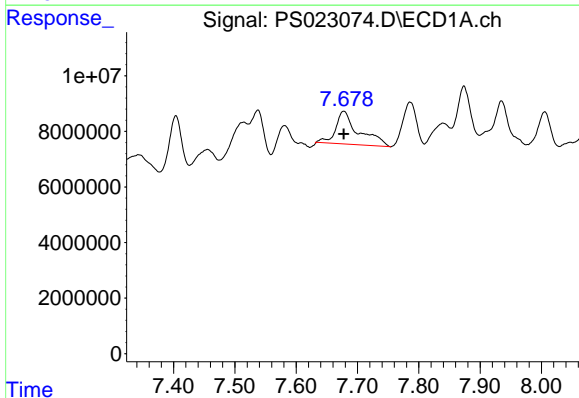
R.T.: 7.455 min  
 Delta R.T.: 0.011 min  
 Response: 9803566  
 Conc: 4.24 ng/ml

Instrument :  
 ECD\_S  
 ClientSampleId :



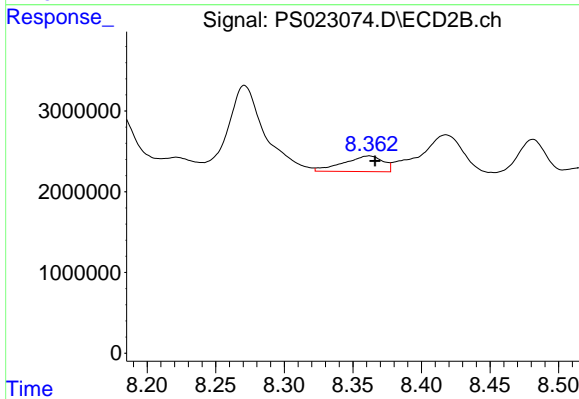
#9 2,4-D

R.T.: 7.918 min  
 Delta R.T.: -0.017 min  
 Response: 3935461  
 Conc: 5.50 ng/ml



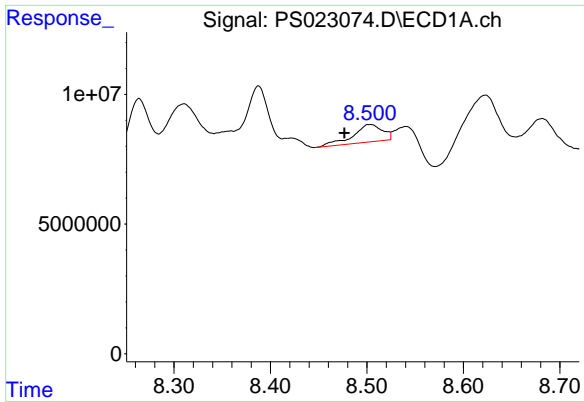
#10 Pentachlorophenol

R.T.: 7.678 min  
 Delta R.T.: 0.000 min  
 Response: 30083460  
 Conc: 1.12 ng/ml



#10 Pentachlorophenol

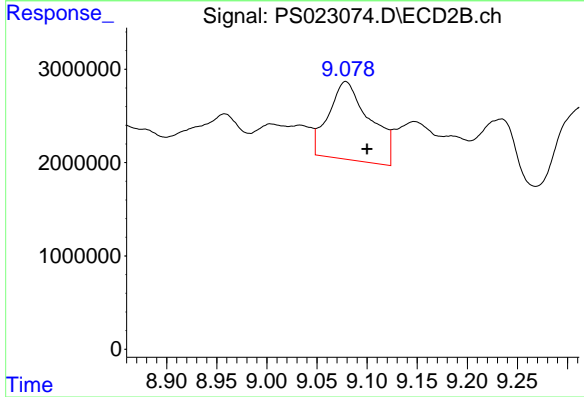
R.T.: 8.362 min  
 Delta R.T.: -0.004 min  
 Response: 3913592  
 Conc: N.D.



#12 2,4,5-T

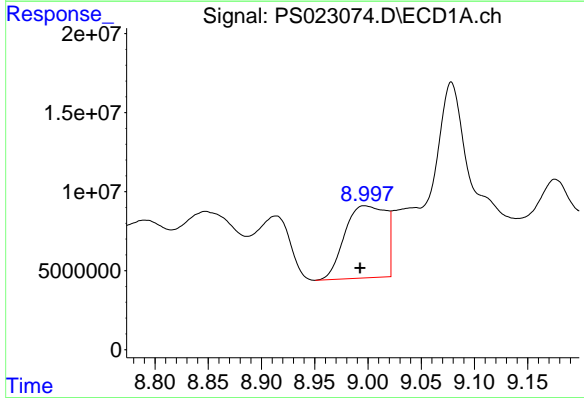
R.T.: 8.503 min  
 Delta R.T.: 0.027 min  
 Response: 14377978  
 Conc: 1.24 ng/ml

Instrument :  
 ECD\_S  
 ClientSampleId :



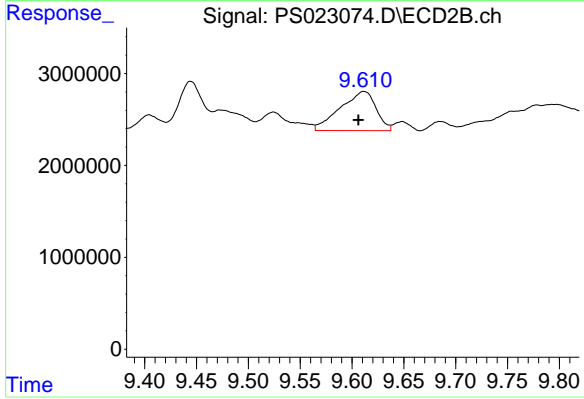
#12 2,4,5-T

R.T.: 9.079 min  
 Delta R.T.: -0.021 min  
 Response: 24058345  
 Conc: 7.49 ng/ml



#13 2,4-DB

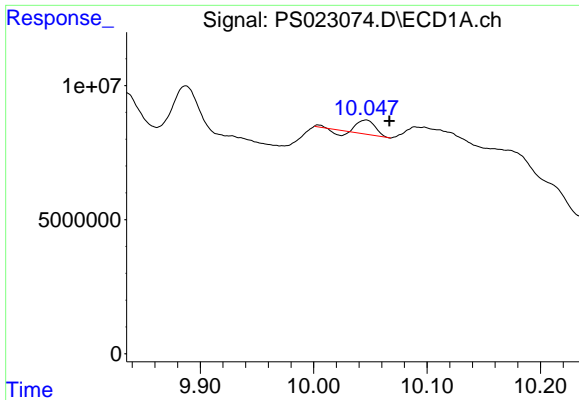
R.T.: 8.997 min  
 Delta R.T.: 0.005 min  
 Response: 122557284  
 Conc: 52.24 ng/ml



#13 2,4-DB

R.T.: 9.611 min  
 Delta R.T.: 0.005 min  
 Response: 10289081  
 Conc: 26.80 ng/ml

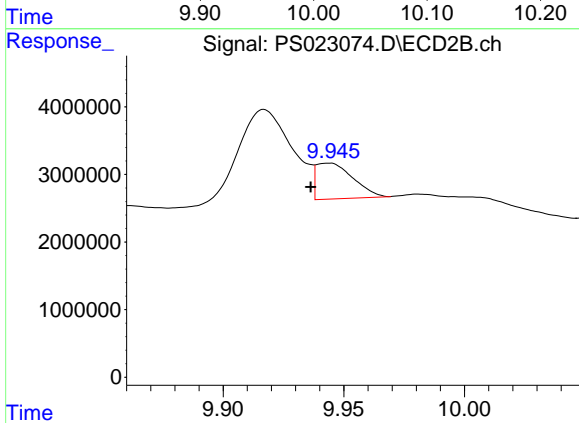




#14 DINOSEB

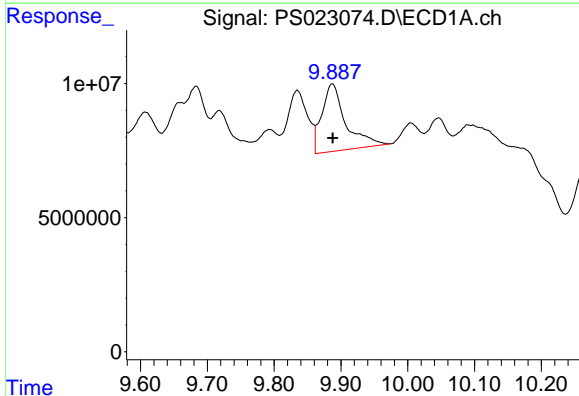
R.T.: 10.046 min  
 Delta R.T.: -0.021 min  
 Response: 5029763  
 Conc: N.D.

Instrument :  
 ECD\_S  
 ClientSampleId :



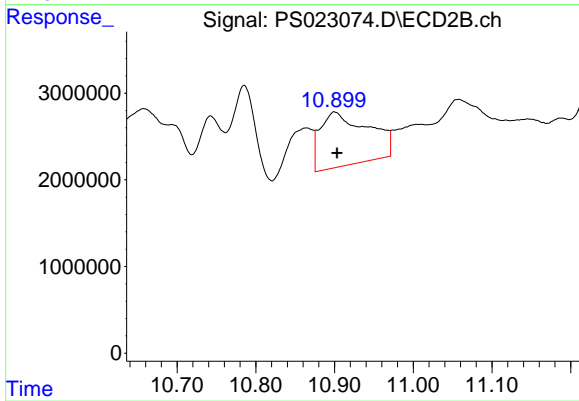
#14 DINOSEB

R.T.: 9.944 min  
 Delta R.T.: 0.007 min  
 Response: 5589784  
 Conc: 2.36 ng/ml



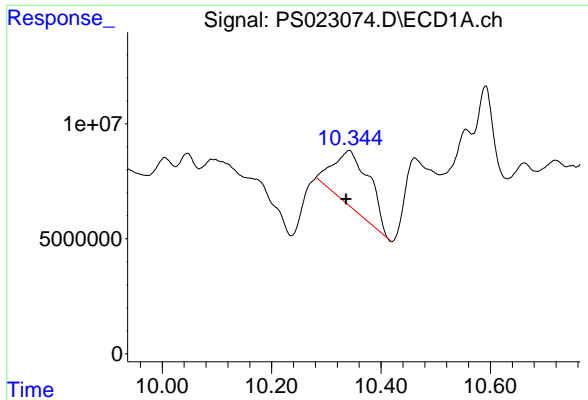
#15 Picloram

R.T.: 9.887 min  
 Delta R.T.: 0.000 min  
 Response: 62572626  
 Conc: 3.65 ng/ml



#15 Picloram

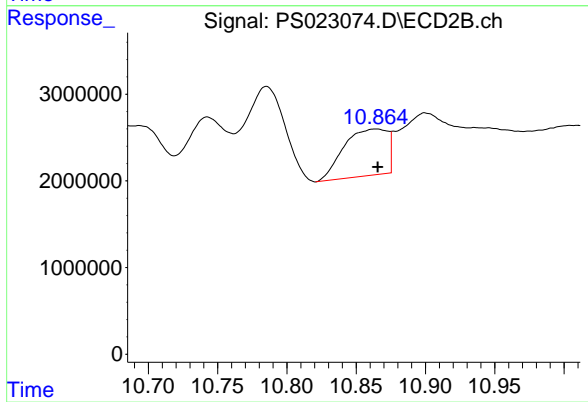
R.T.: 10.900 min  
 Delta R.T.: -0.003 min  
 Response: 26332450  
 Conc: 6.18 ng/ml



#16 DCPA

R.T.: 10.342 min  
 Delta R.T.: 0.005 min  
 Response: 112776456  
 Conc: 8.65 ng/ml

Instrument :  
 ECD\_S  
 ClientSampleId :



#16 DCPA

R.T.: 10.864 min  
 Delta R.T.: -0.002 min  
 Response: 11827960  
 Conc: 3.17 ng/ml