

Data Path : Z:\pestpcbsrv\HPCHEM1\ECD\_S\Data\PS052519\  
 Data File : PS004797.D  
 Signal(s) : Signal #1: ECD1A.ch Signal #2: ECD2B.ch  
 Acq On : 25 May 2019 23:14  
 Operator : SM\AJ  
 Sample : K2993-15  
 Misc :  
 ALS Vial : 35 Sample Multiplier: 1

**Instrument :**  
 ECD\_S  
**ClientSampleId :**  
 SB-15\_1.5-2.0

**Manual Integrations**  
**APPROVED**  
 Ankita  
 5/28/2019 11:02:57 AM

Integration File signal 1: autoint1.e  
 Integration File signal 2: autoint2.e  
 Quant Time: May 27 00:59:47 2019  
 Quant Method : Z:\pestpcbsrv\HPCHEM1\ECD\_S\Method\PS052019.M  
 Quant Title : 8080.M  
 QLast Update : Tue May 21 04:53:35 2019  
 Response via : Initial Calibration  
 Integrator: ChemStation

Volume Inj. : 2 µl  
 Signal #1 Phase : Rtx-CLPesticides Signal #2 Phase: Rtx-CLPesticides2  
 Signal #1 Info : 30M x 0.32mm x0.5 Signal #2 Info : 30M x 0.32mm x 0.25µm

Compound	RT#1	RT#2	Resp#1	Resp#2	ng/ml	ng/ml
-----						
System Monitoring Compounds						
4) S 2,4-DCAA	5.594	5.304	432.8E6	201.4E6	308.725	208.691m#

Target Compounds  
 -----

(f)=RT Delta > 1/2 Window (#)=Amounts differ by > 25% (m)=manual int.

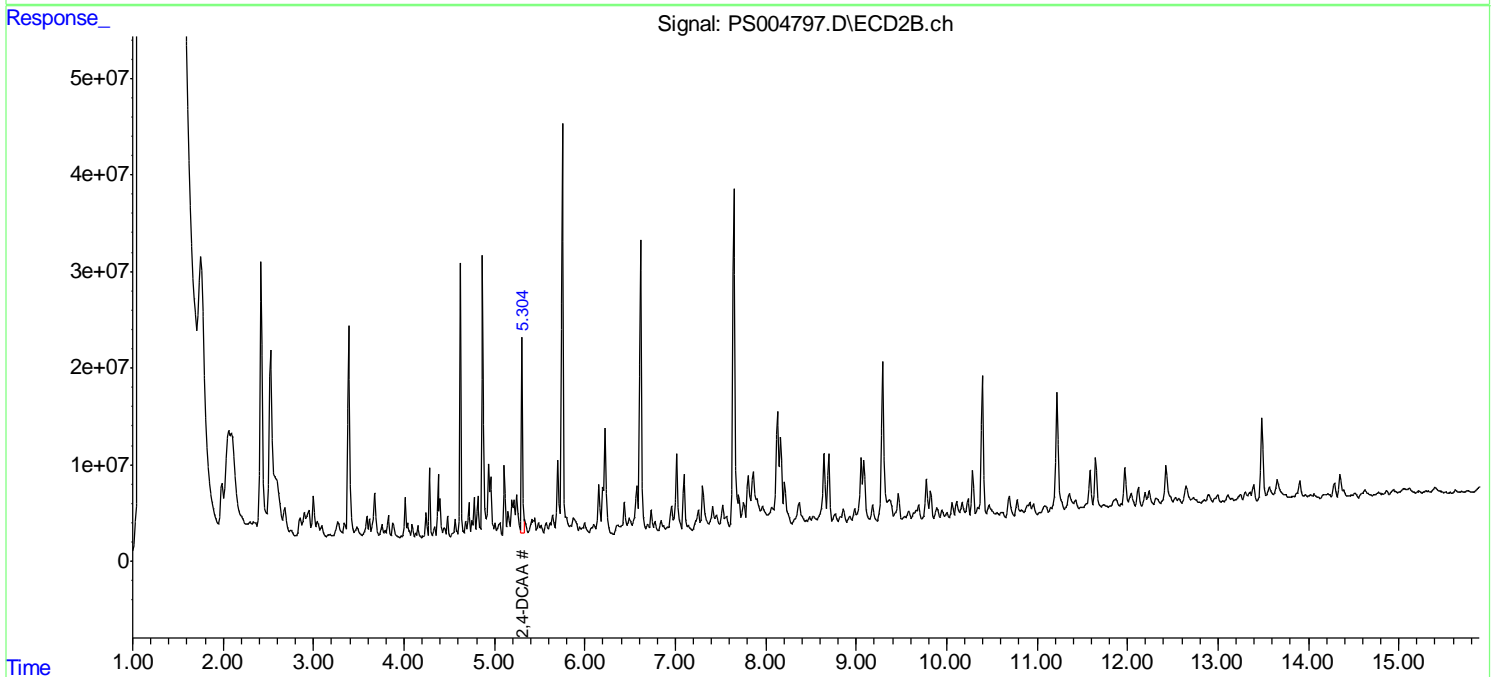
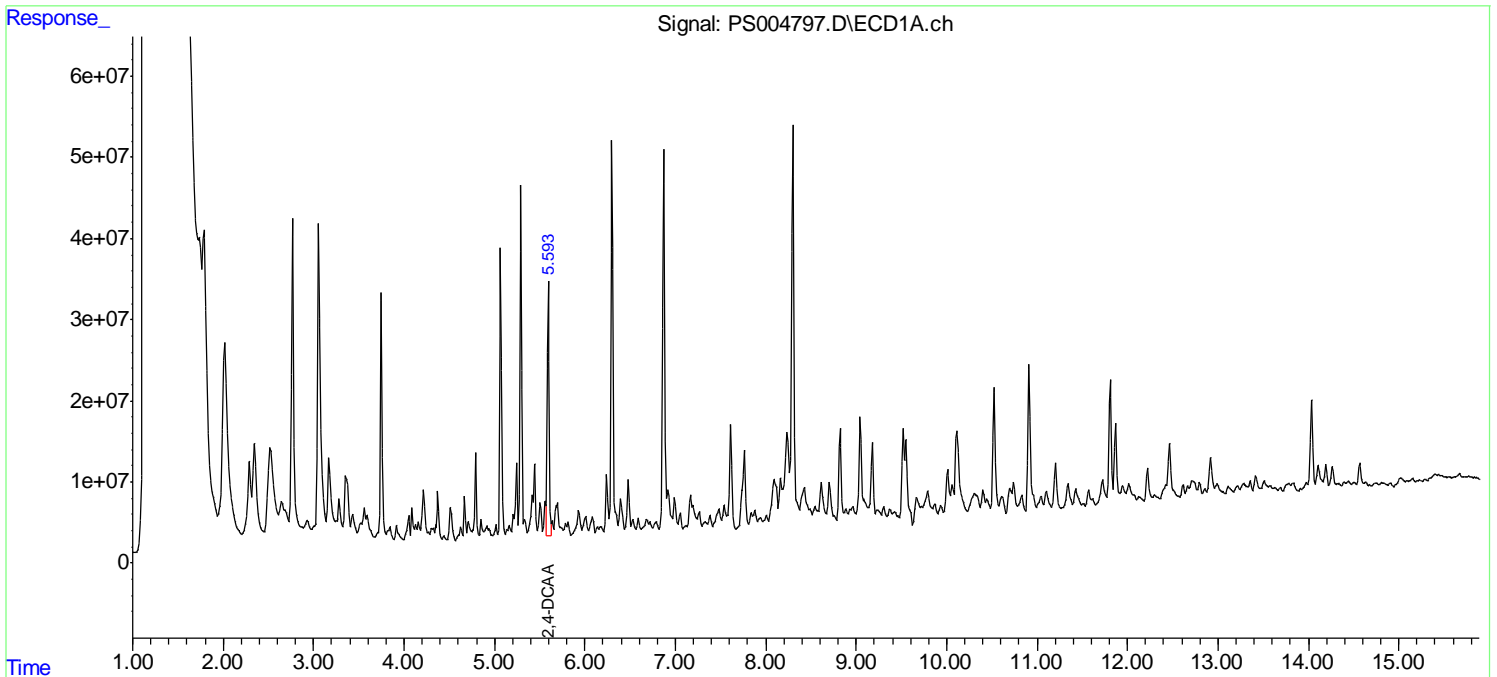
Data Path : Z:\pestpcbsrv\HPCHEM1\ECD\_S\Data\PS052519\  
 Data File : PS004797.D  
 Signal(s) : Signal #1: ECD1A.ch Signal #2: ECD2B.ch  
 Acq On : 25 May 2019 23:14  
 Operator : SM\AJ  
 Sample : K2993-15  
 Misc :  
 ALS Vial : 35 Sample Multiplier: 1

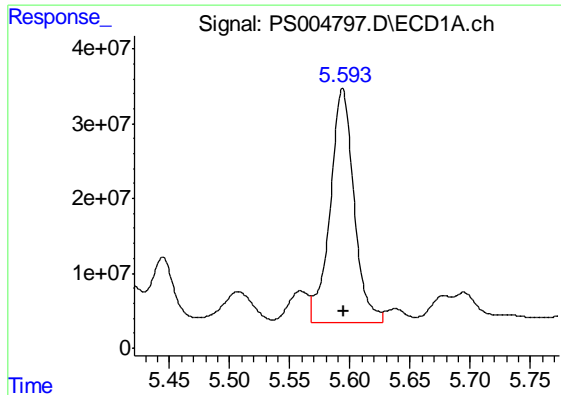
**Instrument :**  
 ECD\_S  
**ClientSampled :**  
 SB-15\_1.5-2.0

**Manual Integrations**  
**APPROVED**  
 Ankita  
 5/28/2019 11:02:57 AM

Integration File signal 1: autoint1.e  
 Integration File signal 2: autoint2.e  
 Quant Time: May 27 00:59:47 2019  
 Quant Method : Z:\pestpcbsrv\HPCHEM1\ECD\_S\Method\PS052019.M  
 Quant Title : 8080.M  
 QLast Update : Tue May 21 04:53:35 2019  
 Response via : Initial Calibration  
 Integrator: ChemStation

Volume Inj. : 2 µl  
 Signal #1 Phase : Rtx-CLPesticides Signal #2 Phase: Rtx-CLPesticides2  
 Signal #1 Info : 30M x 0.32mm x0.5 Signal #2 Info : 30M x 0.32mm x 0.25µm





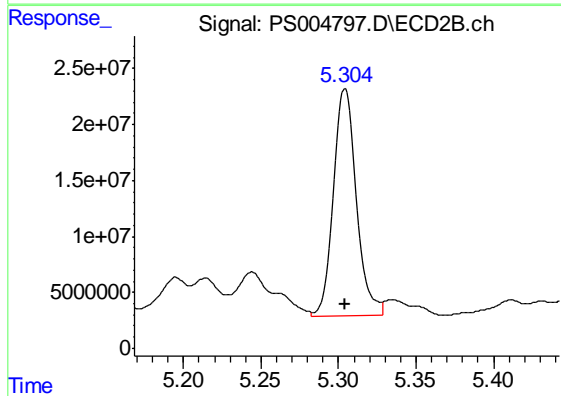
#4 2,4-DCAA

R.T.: 5.594 min  
Delta R.T.: -0.001 min  
Response: 432756647  
Conc: 308.72 ng/ml

Instrument :  
ECD\_S  
ClientSampleId :  
SB-15\_1.5-2.0

Manual Integrations  
APPROVED

Ankita  
5/28/2019 11:02:57 AM



#4 2,4-DCAA

R.T.: 5.304 min  
Delta R.T.: 0.000 min  
Response: 201352344  
Conc: 208.69 ng/ml m