

Data Path : Z:\pestpcbsrv\HPCHEM1\ECD\_S\Data\PS052623\  
 Data File : PS023137.D  
 Signal(s) : Signal #1: ECD1A.ch Signal #2: ECD2B.ch  
 Acq On : 26 May 2023 11:27  
 Operator : AR\AJ  
 Sample : HEXANE  
 Misc :  
 ALS Vial : 1 Sample Multiplier: 1

Instrument :  
 ECD\_S  
 ClientSampleId :

Integration File signal 1: autoint1.e  
 Integration File signal 2: autoint2.e  
 Quant Time: May 26 21:25:58 2023  
 Quant Method : Z:\pestpcbsrv\HPCHEM1\ECD\_S\Method\PS051023.M  
 Quant Title : 8080.M  
 QLast Update : Wed May 10 16:09:19 2023  
 Response via : Initial Calibration  
 Integrator: ChemStation

Volume Inj. : 2 µl  
 Signal #1 Phase : Rtx-CLPesticides Signal #2 Phase: Rtx-CLPesticides2  
 Signal #1 Info : 30M x 0.32mm x0.5 Signal #2 Info : 30M x 0.32mm x 0.25µm

Compound	RT#1	RT#2	Resp#1	Resp#2	ng/ml	ng/ml
-----						
System Monitoring Compounds						
4) S 2,4-DCAA	6.429f	0.000	1729834	0	1.137	N.D. #
Target Compounds						
3) T 4-Nitroph...	6.317	0.000	4378933	0	4.159	N.D. #
5) T DICAMBA	6.584f	7.076f	107246	3616778	<MDL	1.452 #
6) T MCPP	0.000	7.076f	0	3616778	N.D.	2.044
7) T MCPA	0.000	7.265f	0	9827785	N.D.	3.712
8) T DICHLORPROP	7.273	7.664	297120	1661431	<MDL	2.685 #
9) T 2,4-D	7.410	0.000	74763942	0	32.305	N.D. #
10) T Pentachlo...	7.696	0.000	393059	0	<MDL	N.D. #
11) T 2,4,5-TP ...	8.219	0.000	1842743	0	<MDL	N.D. #
12) T 2,4,5-T	8.487	9.146f	1702604	1939087	<MDL	<MDL #
15) T Picloram	9.876	10.903	31205838	7096583	1.820	1.666
16) T DCPA	10.340	10.903	1871740	7096583	<MDL	1.899 #

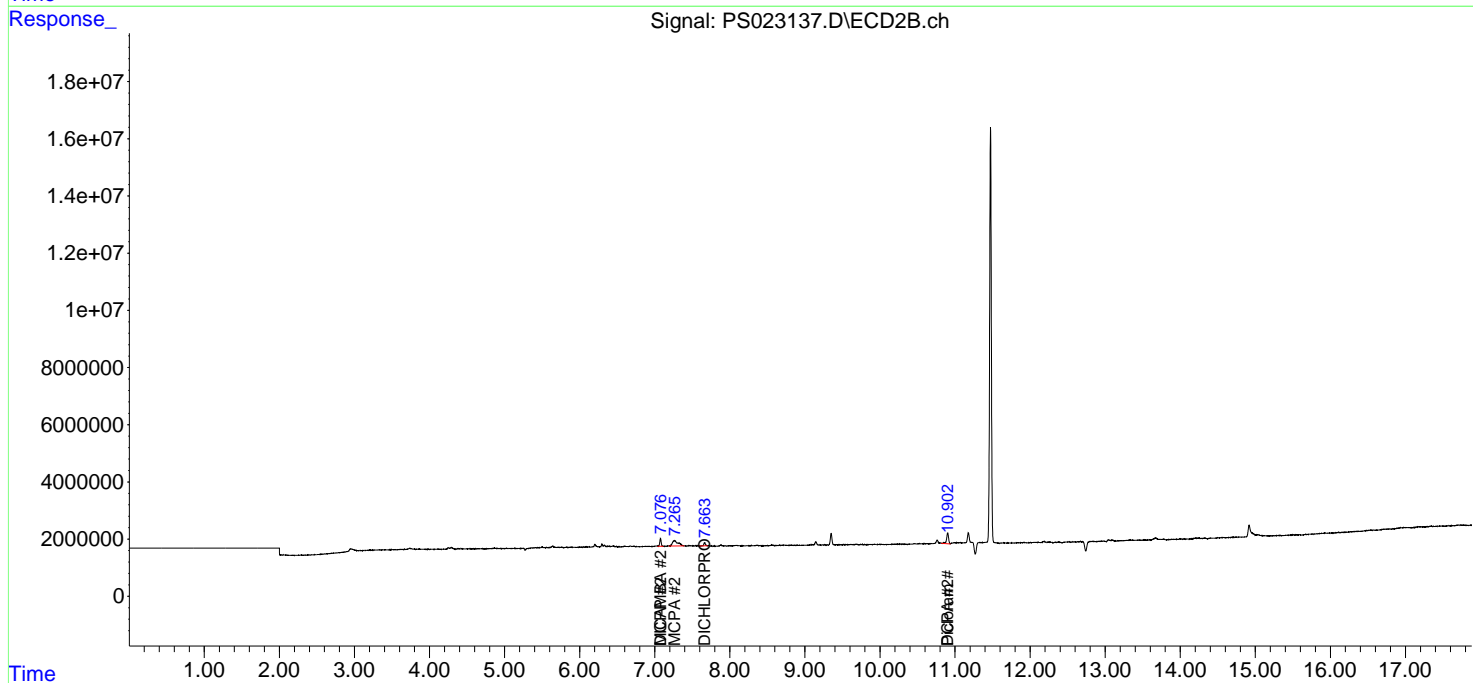
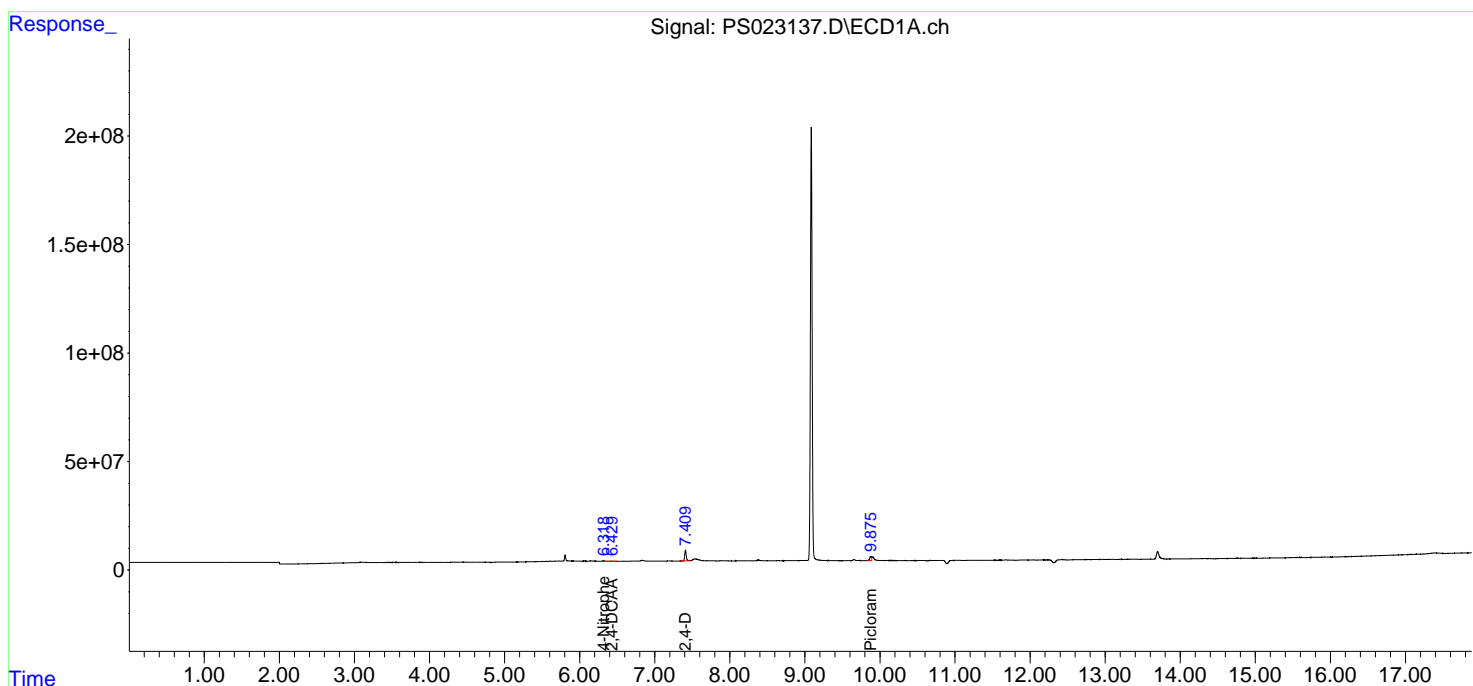
(f)=RT Delta > 1/2 Window (#)=Amounts differ by > 25% (m)=manual int.

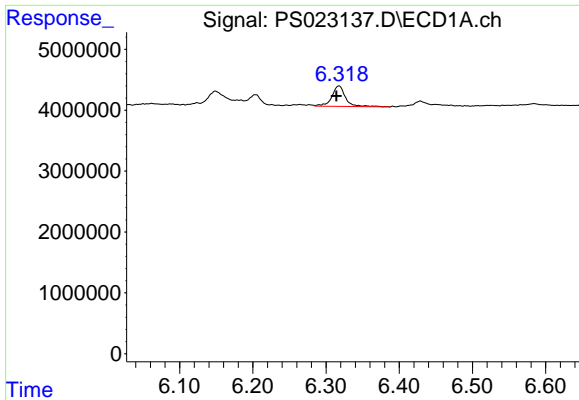
Data Path : Z:\pestpcbsrv\HPCHEM1\ECD\_S\Data\PS052623\  
 Data File : PS023137.D  
 Signal(s) : Signal #1: ECD1A.ch Signal #2: ECD2B.ch  
 Acq On : 26 May 2023 11:27  
 Operator : AR\AJ  
 Sample : HEXANE  
 Misc :  
 ALS Vial : 1 Sample Multiplier: 1

Instrument :  
 ECD\_S  
 ClientSampleId :

Integration File signal 1: autoint1.e  
 Integration File signal 2: autoint2.e  
 Quant Time: May 26 21:25:58 2023  
 Quant Method : Z:\pestpcbsrv\HPCHEM1\ECD\_S\Method\PS051023.M  
 Quant Title : 8080.M  
 QLast Update : Wed May 10 16:09:19 2023  
 Response via : Initial Calibration  
 Integrator: ChemStation

Volume Inj. : 2 µl  
 Signal #1 Phase : Rtx-CLPesticides Signal #2 Phase: Rtx-CLPesticides2  
 Signal #1 Info : 30M x 0.32mm x 0.5 Signal #2 Info : 30M x 0.32mm x 0.25µm

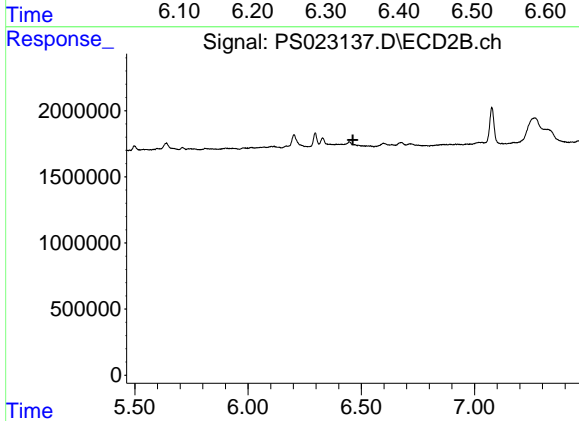




#3 4-Nitrophenol

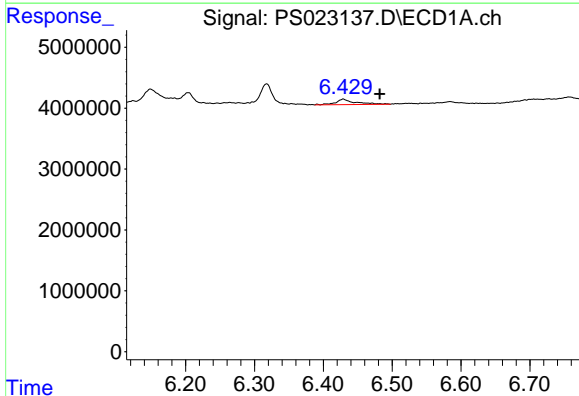
R.T.: 6.317 min  
 Delta R.T.: 0.003 min  
 Response: 4378933  
 Conc: 4.16 ng/ml

Instrument :  
 ECD\_S  
 ClientSampleId :



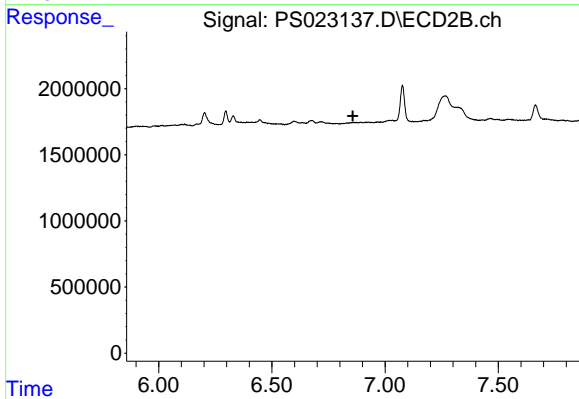
#3 4-Nitrophenol

R.T.: 0.000 min  
 Exp R.T. : 6.463 min  
 Response: 0  
 Conc: N.D.



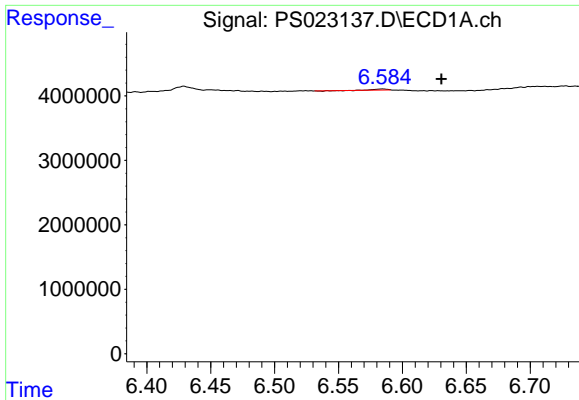
#4 2,4-DCAA

R.T.: 6.429 min  
 Delta R.T.: -0.053 min  
 Response: 1729834  
 Conc: 1.14 ng/ml



#4 2,4-DCAA

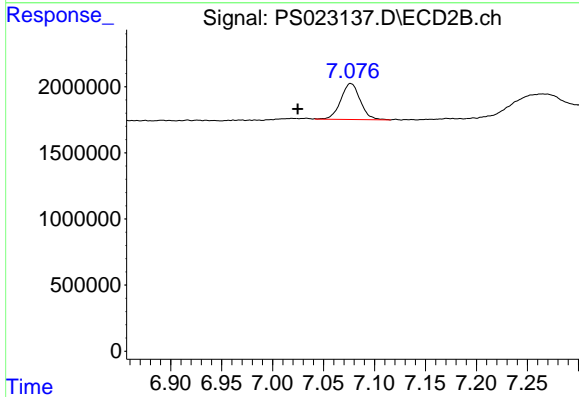
R.T.: 0.000 min  
 Exp R.T. : 6.858 min  
 Response: 0  
 Conc: N.D.



#5 DICAMBA

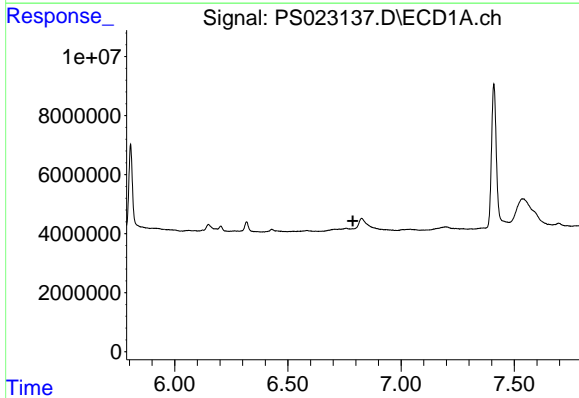
R.T.: 6.584 min  
 Delta R.T.: -0.047 min  
 Response: 107246  
 Conc: N.D.

Instrument :  
 ECD\_S  
 ClientSampleId :



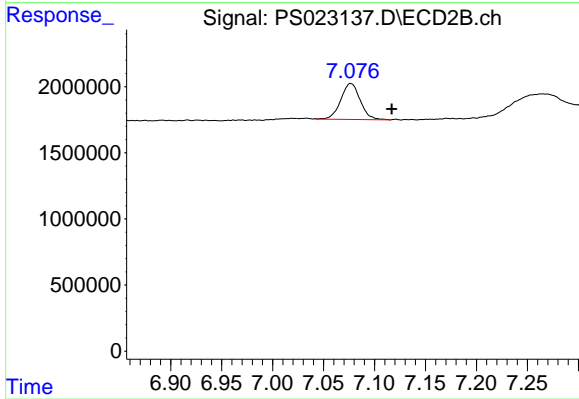
#5 DICAMBA

R.T.: 7.076 min  
 Delta R.T.: 0.052 min  
 Response: 3616778  
 Conc: 1.45 ng/ml



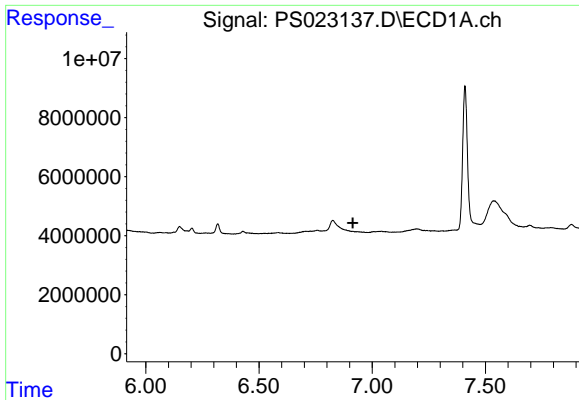
#6 MCP

R.T.: 0.000 min  
 Exp R.T. : 6.787 min  
 Response: 0  
 Conc: N.D.



#6 MCP

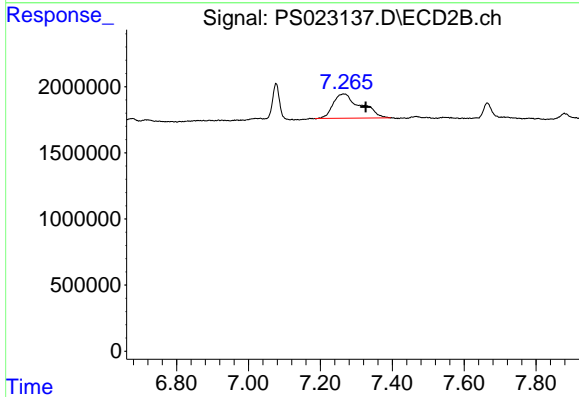
R.T.: 7.076 min  
 Delta R.T.: -0.040 min  
 Response: 3616778  
 Conc: 2.04 ug/ml



#7 MCPA

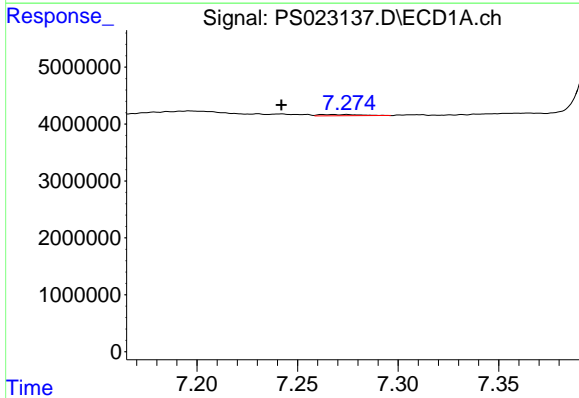
R.T.: 0.000 min  
 Exp R.T.: 6.915 min  
 Response: 0  
 Conc: N.D.

Instrument :  
 ECD\_S  
 ClientSampleId :



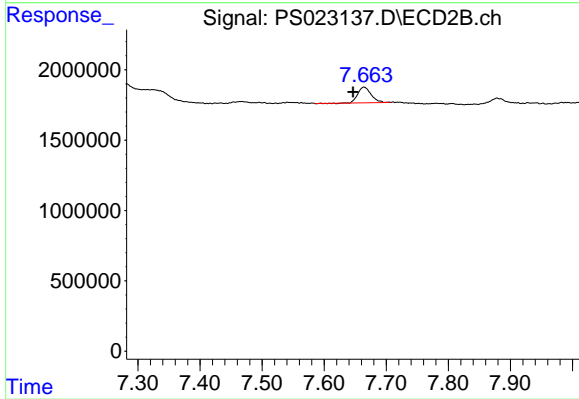
#7 MCPA

R.T.: 7.265 min  
 Delta R.T.: -0.062 min  
 Response: 9827785  
 Conc: 3.71 ug/ml



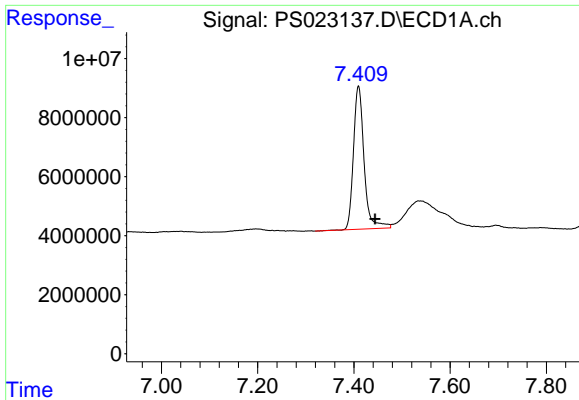
#8 DICHLORPROP

R.T.: 7.273 min  
 Delta R.T.: 0.031 min  
 Response: 297120  
 Conc: N.D.



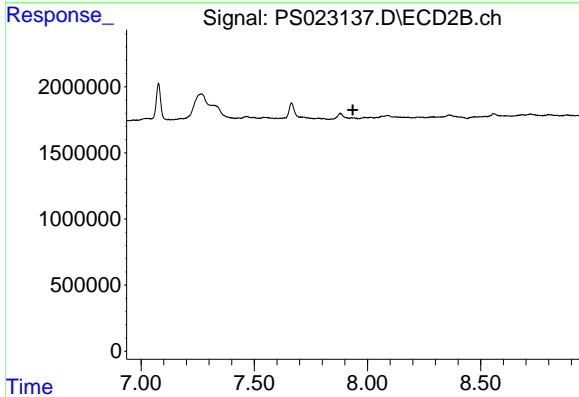
#8 DICHLORPROP

R.T.: 7.664 min  
 Delta R.T.: 0.017 min  
 Response: 1661431  
 Conc: 2.68 ng/ml

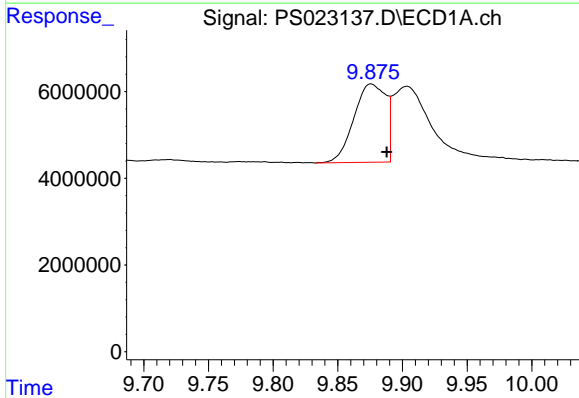


#9 2,4-D  
 R.T.: 7.410 min  
 Delta R.T.: -0.034 min  
 Response: 74763942  
 Conc: 32.31 ng/ml

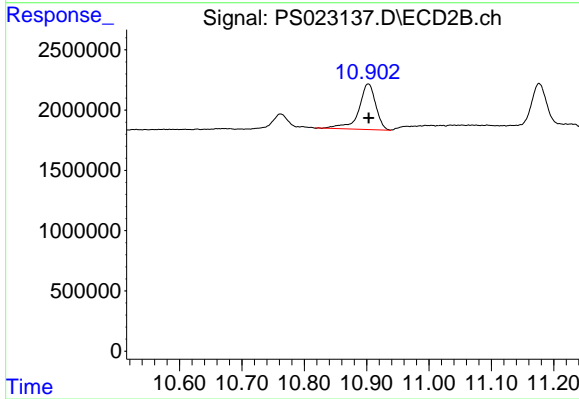
Instrument :  
 ECD\_S  
 ClientSampleId :



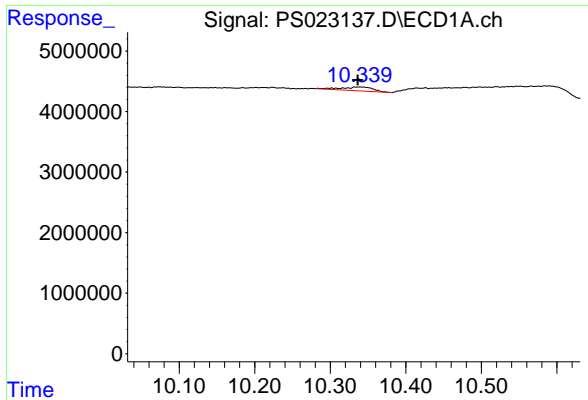
#9 2,4-D  
 R.T.: 0.000 min  
 Exp R.T. : 7.935 min  
 Response: 0  
 Conc: N.D.



#15 Picloram  
 R.T.: 9.876 min  
 Delta R.T.: -0.012 min  
 Response: 31205838  
 Conc: 1.82 ng/ml



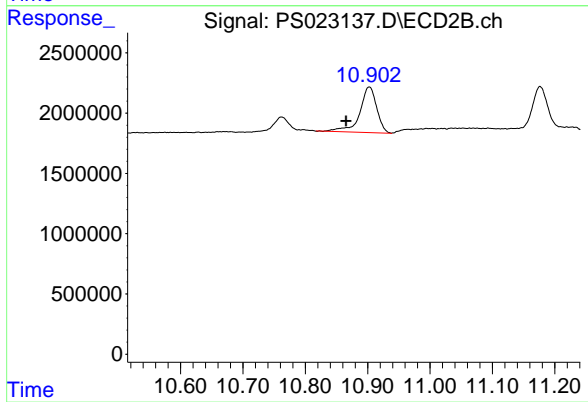
#15 Picloram  
 R.T.: 10.903 min  
 Delta R.T.: 0.000 min  
 Response: 7096583  
 Conc: 1.67 ng/ml



#16 DCPA

R.T.: 10.340 min  
Delta R.T.: 0.003 min  
Response: 1871740  
Conc: N.D.

Instrument :  
ECD\_S  
ClientSampleId :



#16 DCPA

R.T.: 10.903 min  
Delta R.T.: 0.037 min  
Response: 7096583  
Conc: 1.90 ng/ml