

Data Path : Z:\pestpcbsrv\HPCHEM1\ECD_S\Data\PS052720\
 Data File : PS010483.D
 Signal(s) : Signal #1: ECD1A.ch Signal #2: ECD2B.ch
 Acq On : 28 May 2020 11:21
 Operator : DD\AJ
 Sample : L2745-19MS
 Misc :
 ALS Vial : 59 Sample Multiplier: 1

Instrument :
 ECD_S
 ClientSampleId :
 NM62-COMP-2020-0-6MS

Integration File signal 1: autoint1.e
 Integration File signal 2: autoint2.e
 Quant Time: May 28 12:01:53 2020
 Quant Method : Z:\pestpcbsrv\HPCHEM1\ECD_S\Method\PS051120.M
 Quant Title : 8080.M
 QLast Update : Mon May 11 17:06:53 2020
 Response via : Initial Calibration
 Integrator: ChemStation

Volume Inj. : 2 µl
 Signal #1 Phase : Rtx-CLPesticides Signal #2 Phase: Rtx-CLPesticides2
 Signal #1 Info : 30M x 0.32mm x0.5 Signal #2 Info : 30M x 0.32mm x 0.25µm

	Compound	RT#1	RT#2	Resp#1	Resp#2	ng/ml	ng/ml

System Monitoring Compounds							
4) S	2,4-DCAA	7.231	6.921	203.4E6	156.1E6	289.309	291.156
Target Compounds							
1) T	Dalapon	3.043	2.629	170.1E6	281.5E6	190.836	347.503 #
2) T	3,5-DICHL...	6.443	6.070	233.6E6	175.6E6	242.153	215.584
3) T	4-Nitroph...	7.061	6.525	112.2E6	96707215	339.287	291.054
5) T	DICAMBA	7.422	7.090	717.7E6	530.6E6	263.106	242.334
6) T	MCP P	7.589	7.183	47511061	38297504	21.704	20.864
7) T	MCPA	7.737	7.395	87856057	95392022	28.200	35.066
8) T	DICHLORPROP	8.116	7.716	156.0E6	143.1E6	233.671	253.482
9) T	2,4-D	8.344	8.010	218.7E6	204.5E6	309.557	294.941
10) T	Pentachlo...	8.656	8.441	2193.6E6	1669.9E6	241.240	246.474
11) T	2,4,5-TP ...	9.207	8.802	844.1E6	646.4E6	229.027	223.124
12) T	2,4,5-T	9.496	9.181	814.9E6	657.4E6	231.574	226.094
13) T	2,4-DB	10.044	9.688	86444649	103.1E6	171.843	258.773 #
14) T	DINOSEB	11.208	10.023	191.9E6	156.7E6	70.024	73.530
15) T	Picloram	11.019	11.001	1020.3E6	1030.0E6	222.537m	243.961
16) T	DCPA	11.473	10.950	1318.7E6	1077.2E6	291.528	301.323

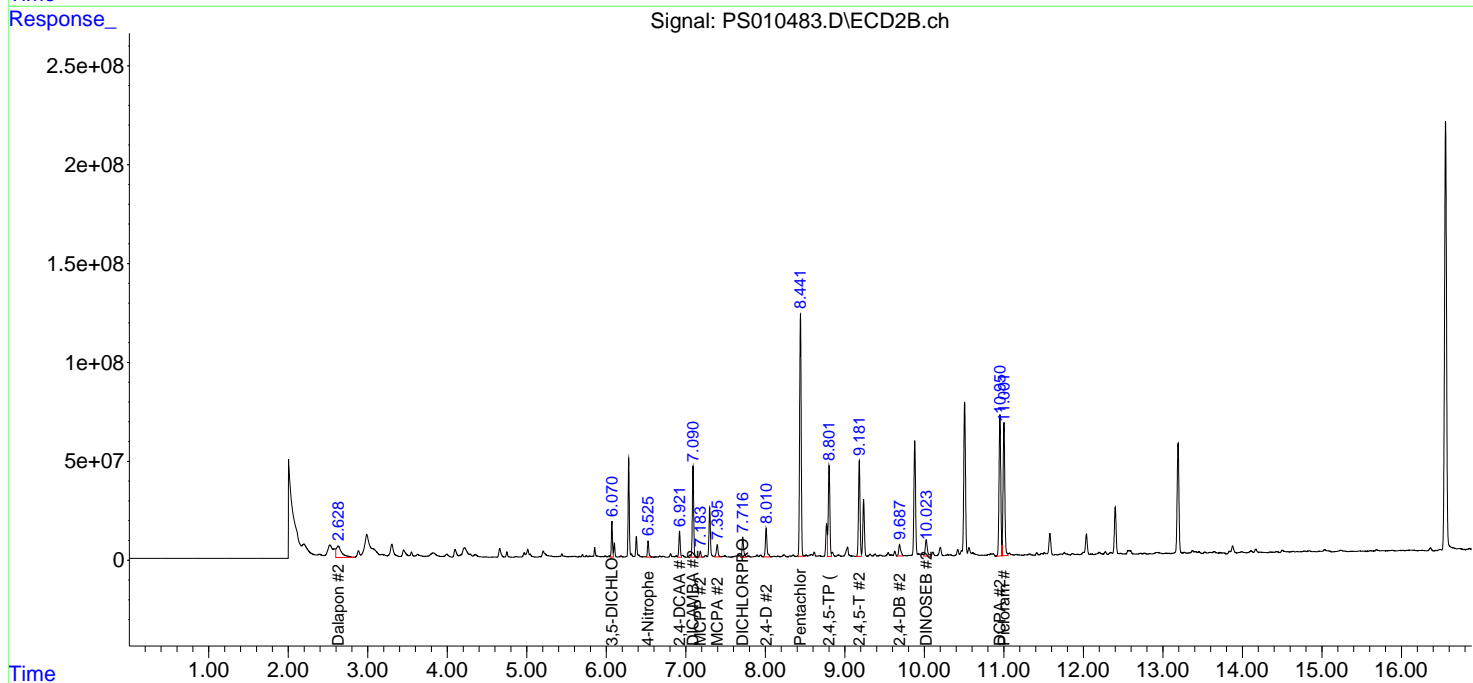
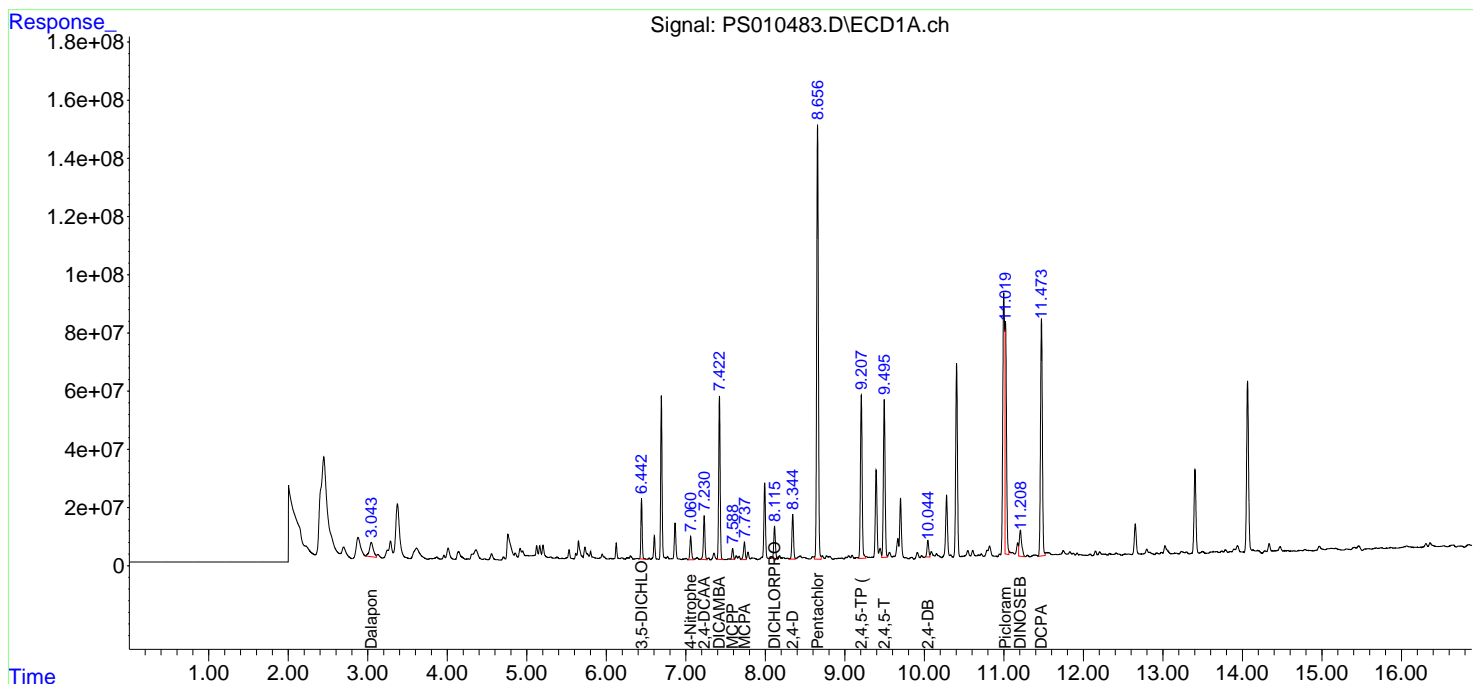
(f)=RT Delta > 1/2 Window (#)=Amounts differ by > 25% (m)=manual int.

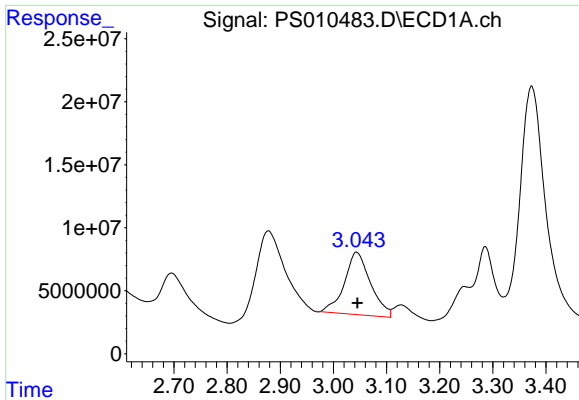
Data Path : Z:\pestpcbsrv\HPCHEM1\ECD_S\Data\PS052720\
 Data File : PS010483.D
 Signal(s) : Signal #1: ECD1A.ch Signal #2: ECD2B.ch
 Acq On : 28 May 2020 11:21
 Operator : DD\AJ
 Sample : L2745-19MS
 Misc :
 ALS Vial : 59 Sample Multiplier: 1

Instrument :
 ECD_S
 ClientSampleID :
 NM62-COMP-2020-0-6MS

Integration File signal 1: autoint1.e
 Integration File signal 2: autoint2.e
 Quant Time: May 28 12:01:53 2020
 Quant Method : Z:\pestpcbsrv\HPCHEM1\ECD_S\Method\PS051120.M
 Quant Title : 8080.M
 QLast Update : Mon May 11 17:06:53 2020
 Response via : Initial Calibration
 Integrator: ChemStation

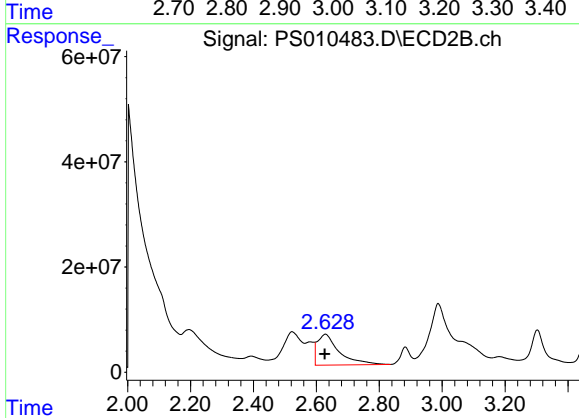
Volume Inj. : 2 µl
 Signal #1 Phase : Rtx-CLPesticides Signal #2 Phase: Rtx-CLPesticides2
 Signal #1 Info : 30M x 0.32mm x0.5 Signal #2 Info : 30M x 0.32mm x 0.25µm



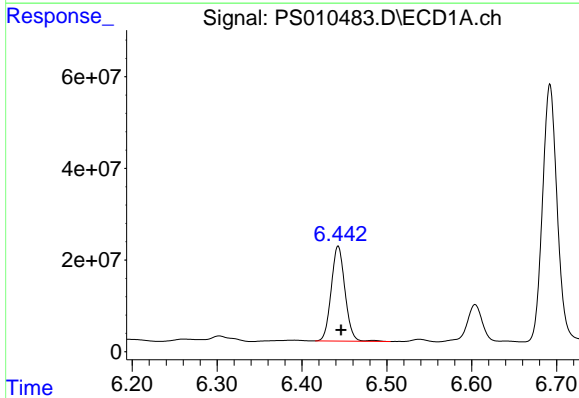


#1 Dalapon
 R.T.: 3.043 min
 Delta R.T.: -0.002 min
 Response: 170114085
 Conc: 190.84 ng/ml

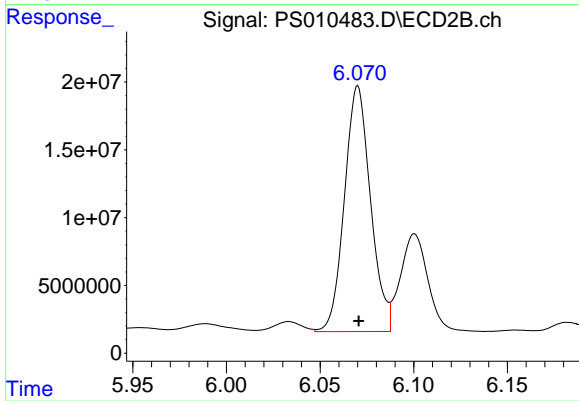
Instrument :
 ECD_S
 ClientSampleId :
 NM62-COMP-2020-0-6MS



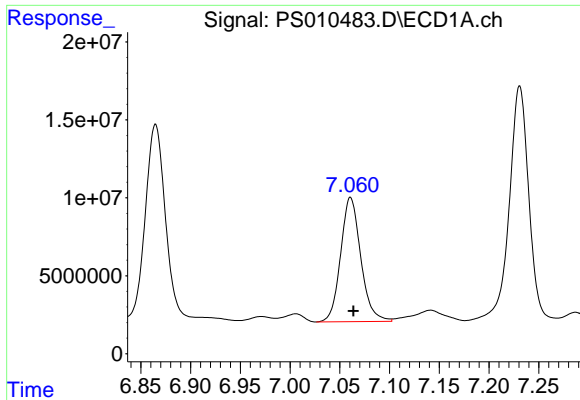
#1 Dalapon
 R.T.: 2.629 min
 Delta R.T.: 0.002 min
 Response: 281528698
 Conc: 347.50 ng/ml



#2 3,5-DICHLOROBENZOIC ACID
 R.T.: 6.443 min
 Delta R.T.: -0.003 min
 Response: 233614905
 Conc: 242.15 ng/ml

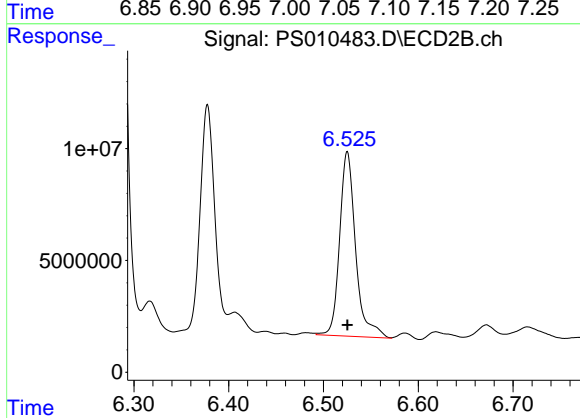


#2 3,5-DICHLOROBENZOIC ACID
 R.T.: 6.070 min
 Delta R.T.: 0.000 min
 Response: 175565301
 Conc: 215.58 ng/ml

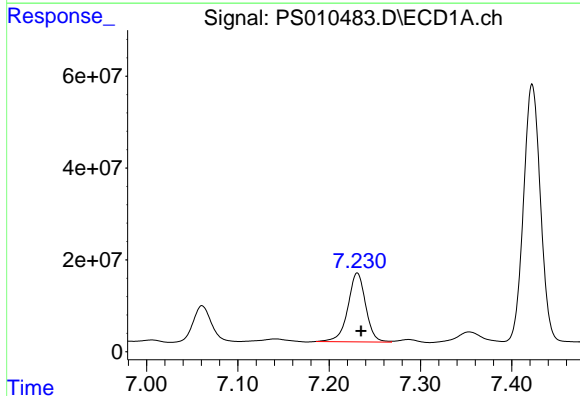


#3 4-Nitrophenol
R.T.: 7.061 min
Delta R.T.: -0.003 min
Response: 112241165
Conc: 339.29 ng/ml

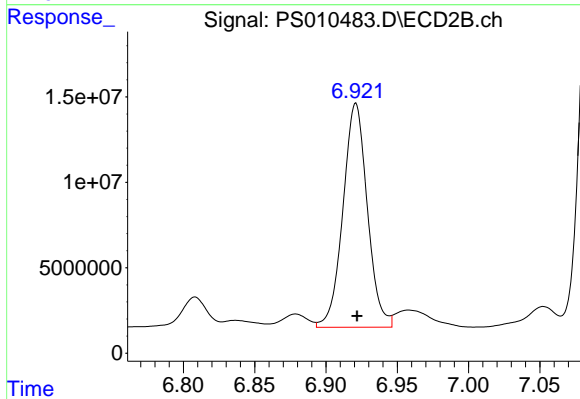
Instrument :
ECD_S
ClientSampleId :
NM62-COMP-2020-0-6MS



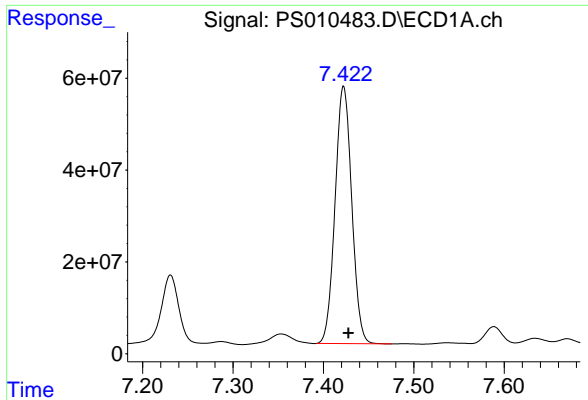
#3 4-Nitrophenol
R.T.: 6.525 min
Delta R.T.: 0.000 min
Response: 96707215
Conc: 291.05 ng/ml



#4 2,4-DCAA
R.T.: 7.231 min
Delta R.T.: -0.004 min
Response: 203411299
Conc: 289.31 ng/ml



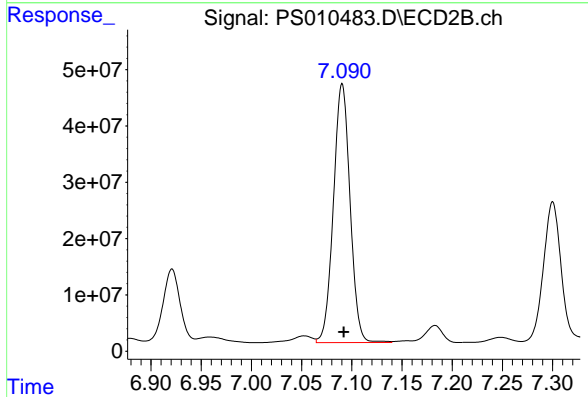
#4 2,4-DCAA
R.T.: 6.921 min
Delta R.T.: 0.000 min
Response: 156144386
Conc: 291.16 ng/ml



#5 DICAMBA

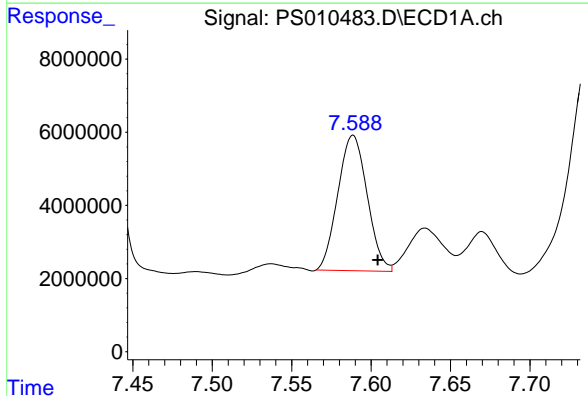
R.T.: 7.422 min
 Delta R.T.: -0.005 min
 Response: 717721323
 Conc: 263.11 ng/ml

Instrument :
 ECD_S
 ClientSampleId :
 NM62-COMP-2020-0-6MS



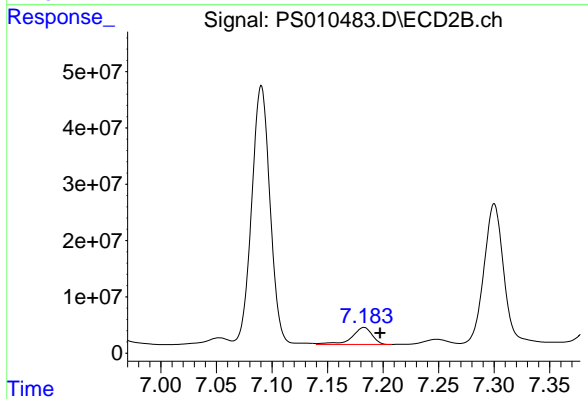
#5 DICAMBA

R.T.: 7.090 min
 Delta R.T.: -0.002 min
 Response: 530614838
 Conc: 242.33 ng/ml



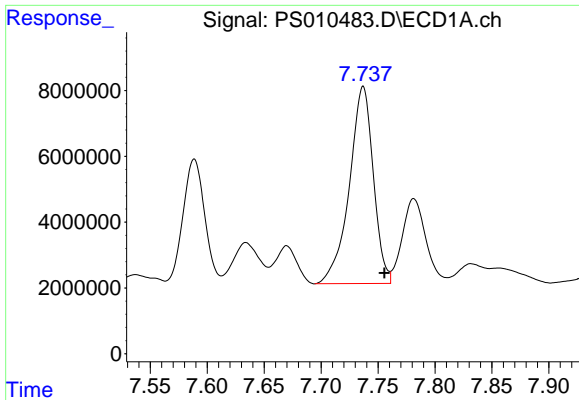
#6 MCPP

R.T.: 7.589 min
 Delta R.T.: -0.016 min
 Response: 47511061
 Conc: 21.70 ug/ml



#6 MCPP

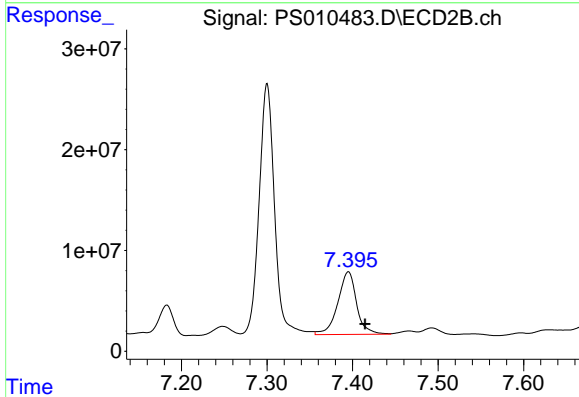
R.T.: 7.183 min
 Delta R.T.: -0.015 min
 Response: 38297504
 Conc: 20.86 ug/ml



#7 MCPA

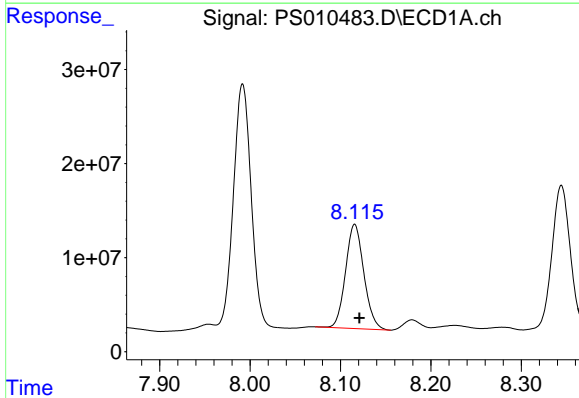
R.T.: 7.737 min
 Delta R.T.: -0.019 min
 Response: 87856057
 Conc: 28.20 ug/ml

Instrument :
 ECD_S
ClientSampleId :
 NM62-COMP-2020-0-6MS



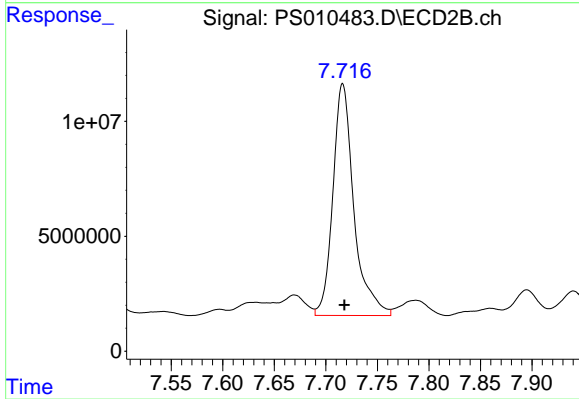
#7 MCPA

R.T.: 7.395 min
 Delta R.T.: -0.020 min
 Response: 95392022
 Conc: 35.07 ug/ml



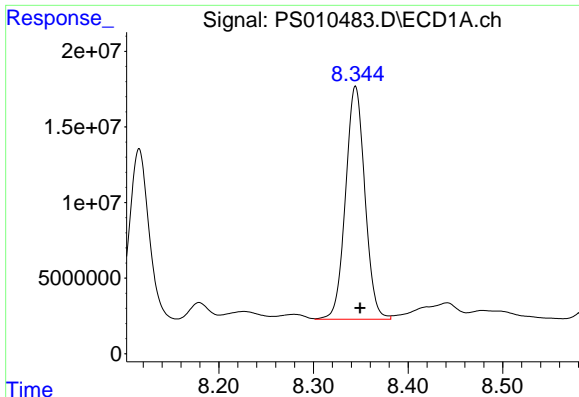
#8 DICHLORPROP

R.T.: 8.116 min
 Delta R.T.: -0.005 min
 Response: 156006259
 Conc: 233.67 ng/ml



#8 DICHLORPROP

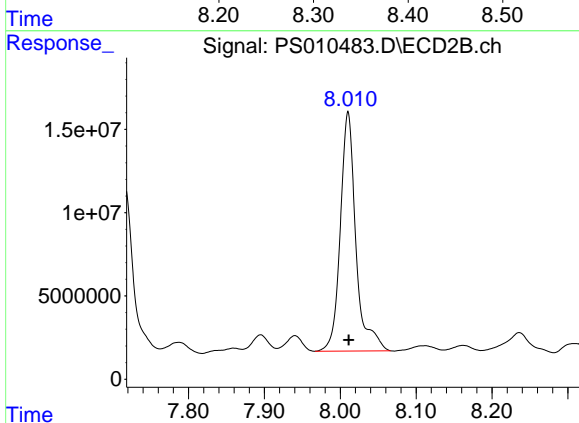
R.T.: 7.716 min
 Delta R.T.: -0.002 min
 Response: 143108268
 Conc: 253.48 ng/ml



#9 2,4-D

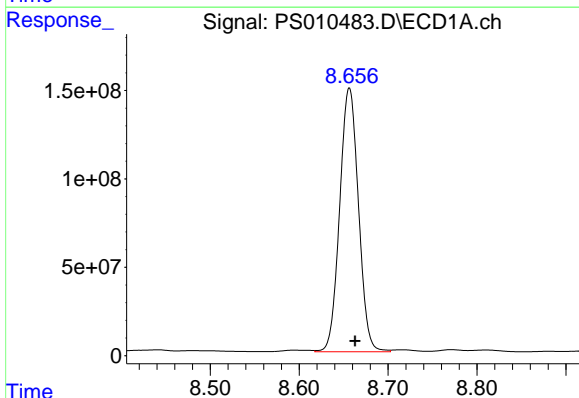
R.T.: 8.344 min
Delta R.T.: -0.005 min
Response: 218688003
Conc: 309.56 ng/ml

Instrument :
ECD_S
ClientSampleId :
NM62-COMP-2020-0-6MS



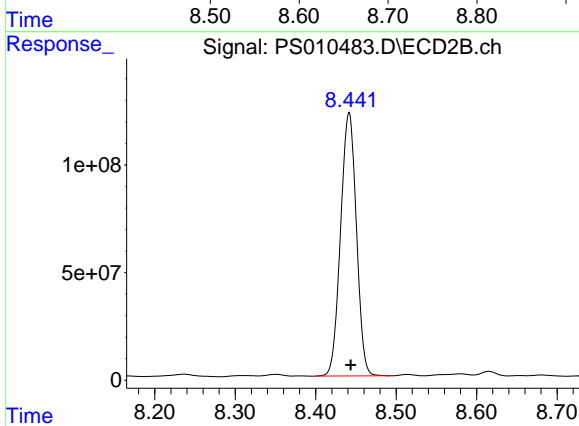
#9 2,4-D

R.T.: 8.010 min
Delta R.T.: -0.001 min
Response: 204513026
Conc: 294.94 ng/ml



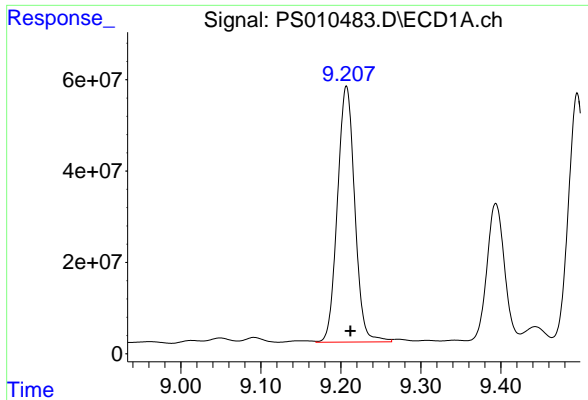
#10 Pentachlorophenol

R.T.: 8.656 min
Delta R.T.: -0.007 min
Response: 2193573507
Conc: 241.24 ng/ml



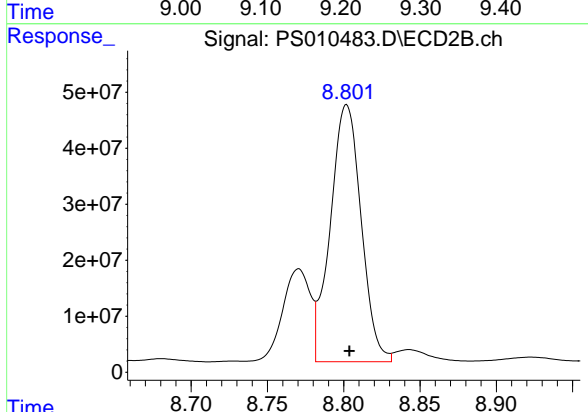
#10 Pentachlorophenol

R.T.: 8.441 min
Delta R.T.: -0.002 min
Response: 1669946370
Conc: 246.47 ng/ml

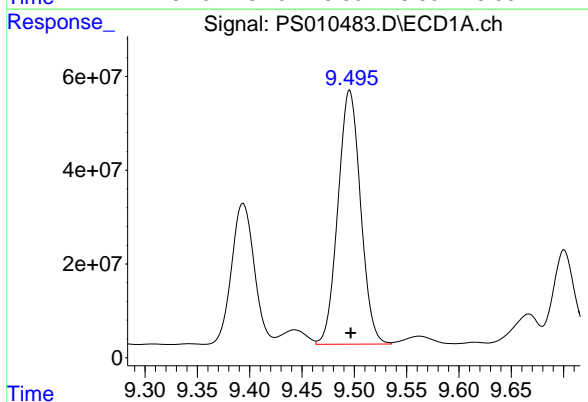


#11 2,4,5-TP (SILVEX)
 R.T.: 9.207 min
 Delta R.T.: -0.005 min
 Response: 844080545
 Conc: 229.03 ng/ml

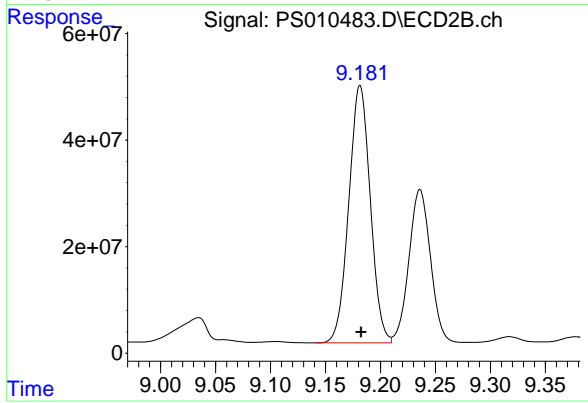
Instrument :
 ECD_S
ClientSampleId :
 NM62-COMP-2020-0-6MS



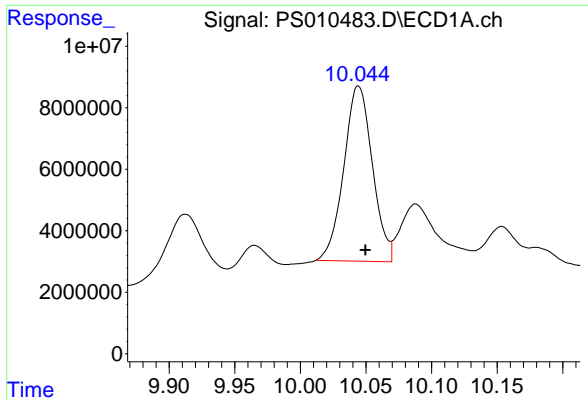
#11 2,4,5-TP (SILVEX)
 R.T.: 8.802 min
 Delta R.T.: -0.002 min
 Response: 646356172
 Conc: 223.12 ng/ml



#12 2,4,5-T
 R.T.: 9.496 min
 Delta R.T.: 0.000 min
 Response: 814866335
 Conc: 231.57 ng/ml



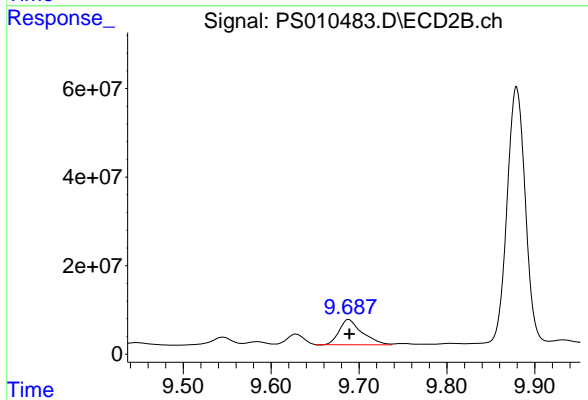
#12 2,4,5-T
 R.T.: 9.181 min
 Delta R.T.: -0.001 min
 Response: 657378924
 Conc: 226.09 ng/ml



#13 2,4-DB

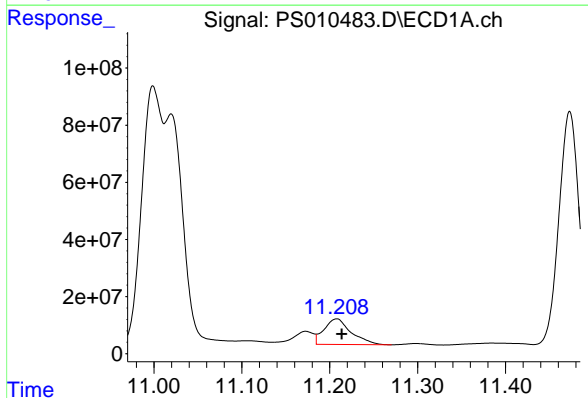
R.T.: 10.044 min
Delta R.T.: -0.005 min
Response: 86444649
Conc: 171.84 ng/ml

Instrument :
ECD_S
ClientSampleId :
NM62-COMP-2020-0-6MS



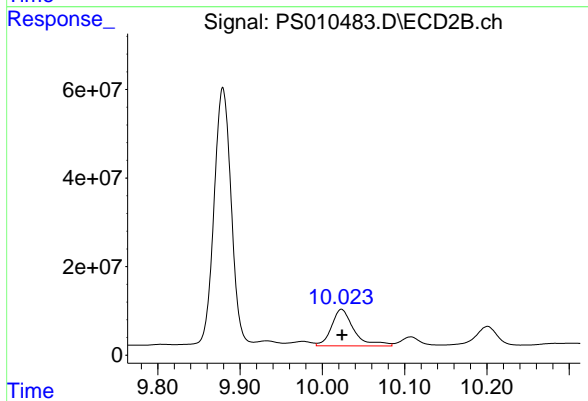
#13 2,4-DB

R.T.: 9.688 min
Delta R.T.: -0.001 min
Response: 103132617
Conc: 258.77 ng/ml



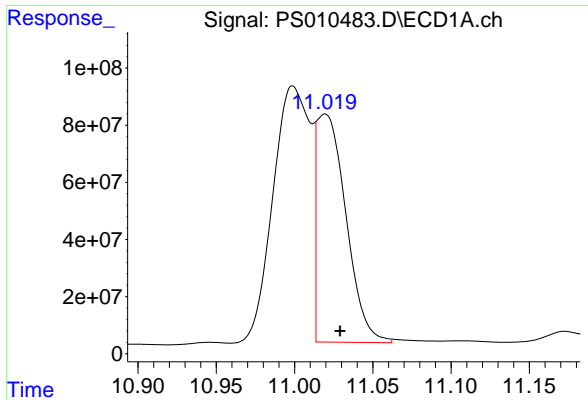
#14 DINOSEB

R.T.: 11.208 min
Delta R.T.: -0.006 min
Response: 191864739
Conc: 70.02 ng/ml



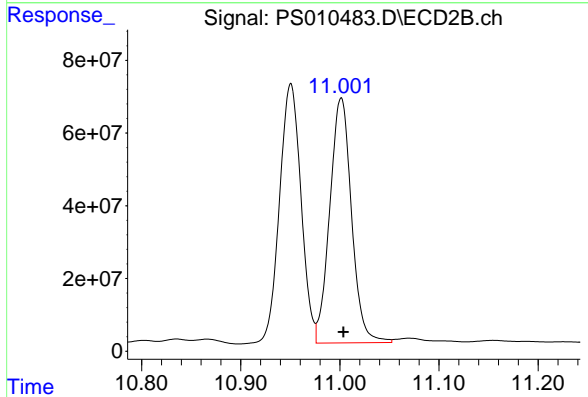
#14 DINOSEB

R.T.: 10.023 min
Delta R.T.: 0.000 min
Response: 156687537
Conc: 73.53 ng/ml

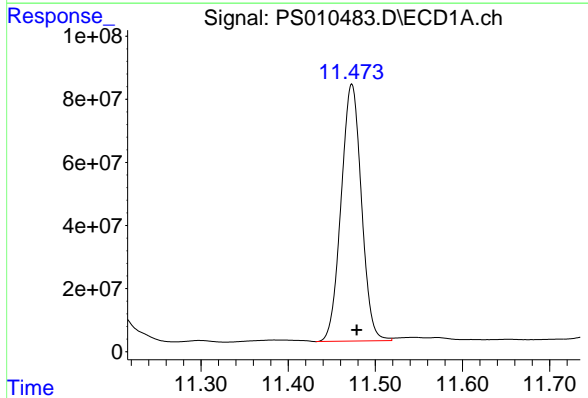


#15 Picloram
 R.T.: 11.019 min
 Delta R.T.: -0.010 min
 Response: 1020282877
 Conc: 222.54 ng/ml m

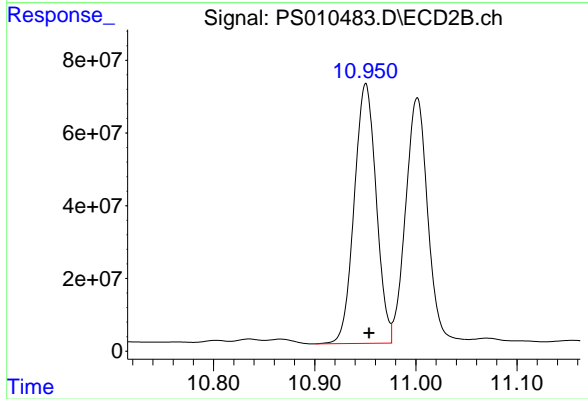
Instrument :
 ECD_S
ClientSampleId :
 NM62-COMP-2020-0-6MS



#15 Picloram
 R.T.: 11.001 min
 Delta R.T.: -0.002 min
 Response: 1029975911
 Conc: 243.96 ng/ml



#16 DCPA
 R.T.: 11.473 min
 Delta R.T.: -0.006 min
 Response: 1318723916
 Conc: 291.53 ng/ml



#16 DCPA
 R.T.: 10.950 min
 Delta R.T.: -0.003 min
 Response: 1077174252
 Conc: 301.32 ng/ml