

Data Path : Z:\pestpcbsrv\HPCHEM1\ECD_S\Data\PS052820\
 Data File : PS010489.D
 Signal(s) : Signal #1: ECD1A.ch Signal #2: ECD2B.ch
 Acq On : 28 May 2020 15:09
 Operator : DD\AJ
 Sample : I.BLK
 Misc :
 ALS Vial : 2 Sample Multiplier: 1

Instrument :
 ECD_S
 ClientSampleId :
 I.BLK

Integration File signal 1: autoint1.e
 Integration File signal 2: autoint2.e
 Quant Time: May 29 06:38:59 2020
 Quant Method : Z:\pestpcbsrv\HPCHEM1\ECD_S\Method\PS051120.M
 Quant Title : 8080.M
 QLast Update : Mon May 11 17:06:53 2020
 Response via : Initial Calibration
 Integrator: ChemStation

Volume Inj. : 2 µl
 Signal #1 Phase : Rtx-CLPesticides Signal #2 Phase: Rtx-CLPesticides2
 Signal #1 Info : 30M x 0.32mm x0.5 Signal #2 Info : 30M x 0.32mm x 0.25µm

Compound	RT#1	RT#2	Resp#1	Resp#2	ng/ml	ng/ml

System Monitoring Compounds						
4) S 2,4-DCAA	7.231	6.920	340.1E6	276.4E6	483.670	515.356
Target Compounds						
1) T Dalapon	0.000	2.593	0	30204	N.D.	<MDL
5) T DICAMBA	0.000	7.089	0	1437047	N.D.	<MDL
6) T MCPPE	0.000	7.133	0	584611	N.D.	<MDL
8) T DICHLORPROP	0.000	7.744	0	1767417	N.D.	3.131
9) T 2,4-D	0.000	8.010	0	303584	N.D.	<MDL
11) T 2,4,5-TP ...	0.000	8.799	0	579329	N.D.	<MDL
12) T 2,4,5-T	0.000	9.183	0	980825	N.D.	<MDL
13) T 2,4-DB	0.000	9.705	0	673603	N.D.	1.690
14) T DINOSEB	0.000	10.023	0	394108	N.D.	<MDL
15) T Picloram	11.030	11.005	24845806	31658322	5.419	7.499 #
16) T DCPA	0.000	10.950	0	641961	N.D.	<MDL

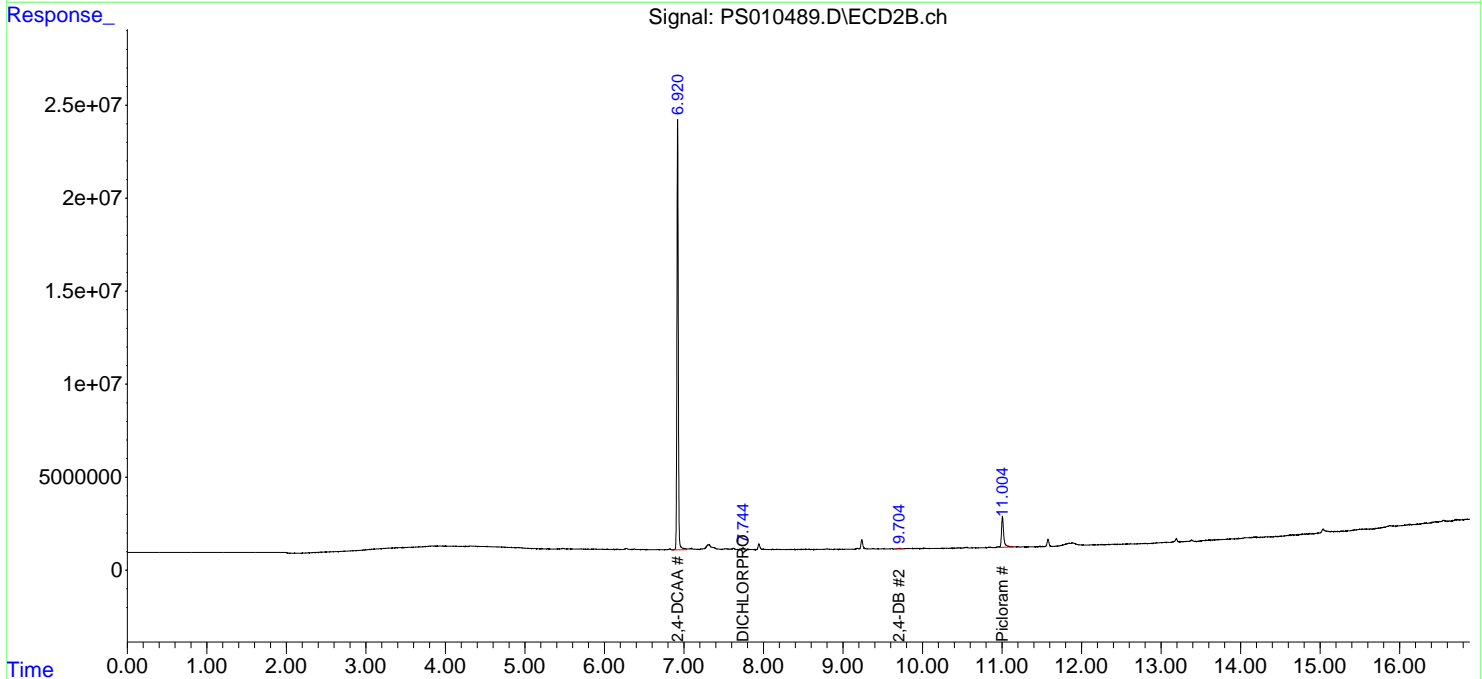
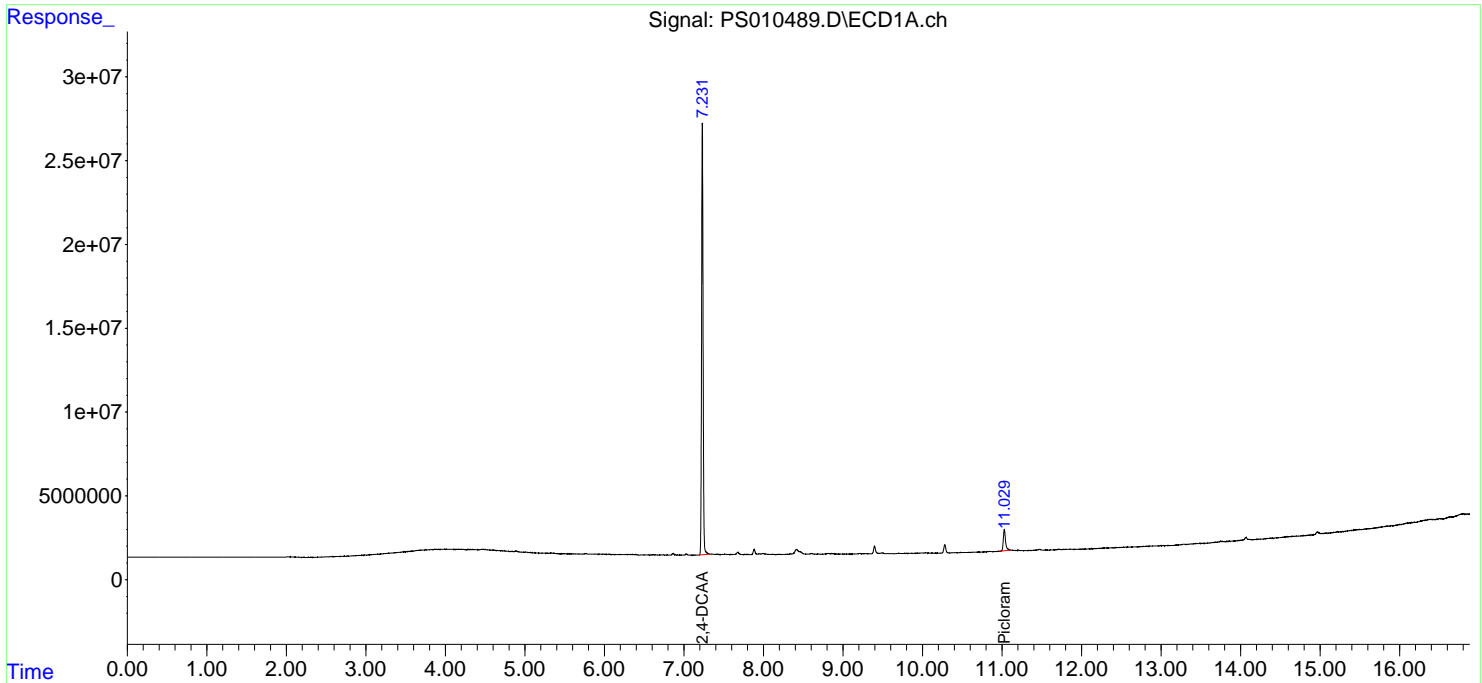
(f)=RT Delta > 1/2 Window (#)=Amounts differ by > 25% (m)=manual int.

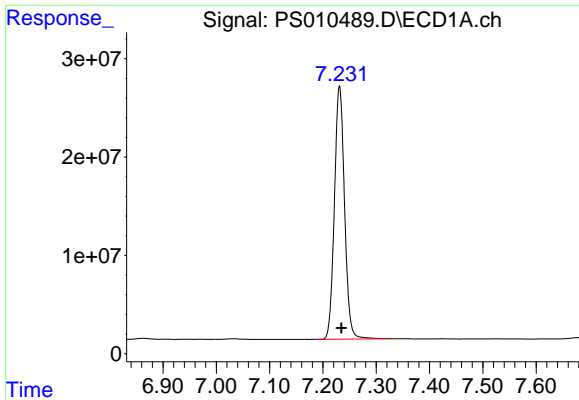
Data Path : Z:\pestpcbsrv\HPCHEM1\ECD_S\Data\PS052820\
 Data File : PS010489.D
 Signal(s) : Signal #1: ECD1A.ch Signal #2: ECD2B.ch
 Acq On : 28 May 2020 15:09
 Operator : DD\AJ
 Sample : I.BLK
 Misc :
 ALS Vial : 2 Sample Multiplier: 1

Instrument :
 ECD_S
 ClientSampleId :
 I.BLK

Integration File signal 1: autoint1.e
 Integration File signal 2: autoint2.e
 Quant Time: May 29 06:38:59 2020
 Quant Method : Z:\pestpcbsrv\HPCHEM1\ECD_S\Method\PS051120.M
 Quant Title : 8080.M
 QLast Update : Mon May 11 17:06:53 2020
 Response via : Initial Calibration
 Integrator: ChemStation

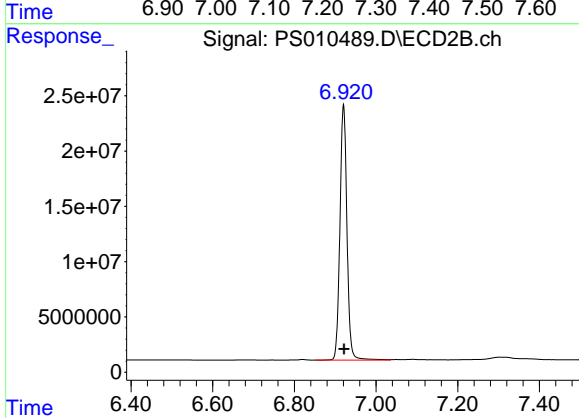
Volume Inj. : 2 µl
 Signal #1 Phase : Rtx-CLPesticides Signal #2 Phase: Rtx-CLPesticides2
 Signal #1 Info : 30M x 0.32mm x 0.5 Signal #2 Info : 30M x 0.32mm x 0.25µm



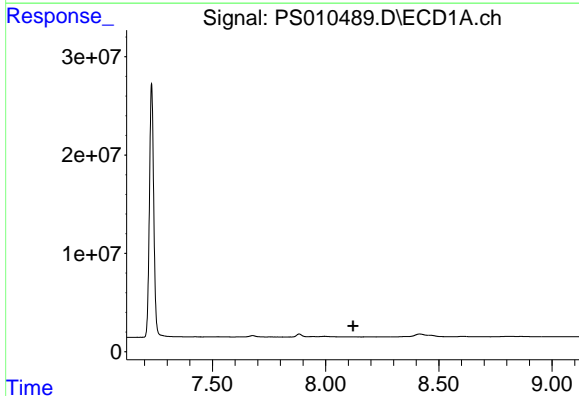


#4 2,4-DCAA
 R.T.: 7.231 min
 Delta R.T.: -0.004 min
 Response: 340066082
 Conc: 483.67 ng/ml

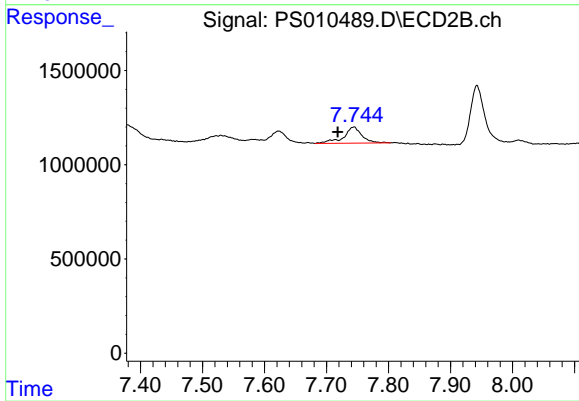
Instrument :
 ECD_S
 ClientSampled :
 I.BLK



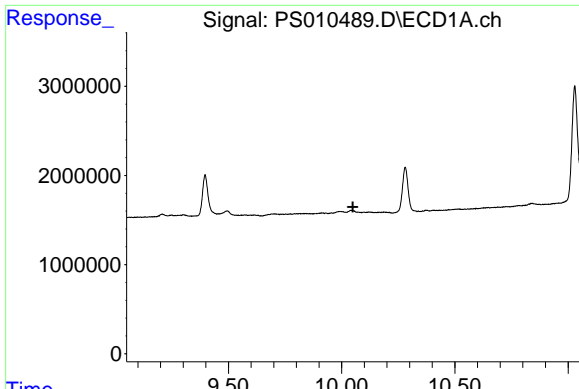
#4 2,4-DCAA
 R.T.: 6.920 min
 Delta R.T.: -0.001 min
 Response: 276380988
 Conc: 515.36 ng/ml



#8 DICHLORPROP
 R.T.: 0.000 min
 Exp R.T. : 8.121 min
 Response: 0
 Conc: N.D.



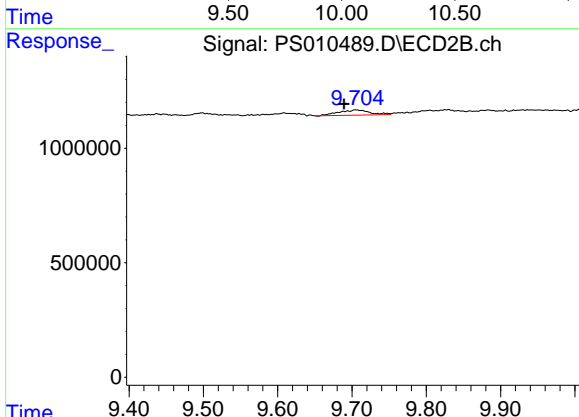
#8 DICHLORPROP
 R.T.: 7.744 min
 Delta R.T.: 0.026 min
 Response: 1767417
 Conc: 3.13 ng/ml



#13 2,4-DB

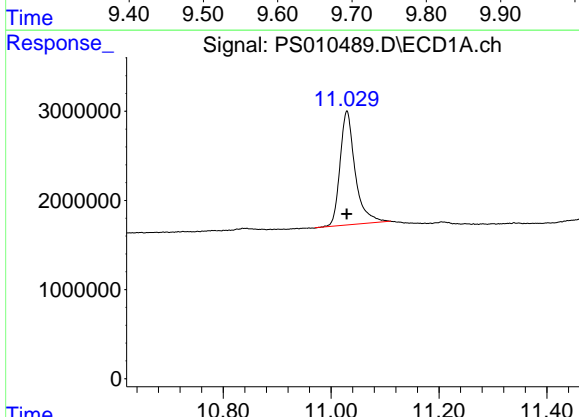
R.T.: 0.000 min
 Exp R.T.: 10.050 min
 Response: 0
 Conc: N.D.

Instrument :
 ECD_S
 ClientSampled :
 I.BLK



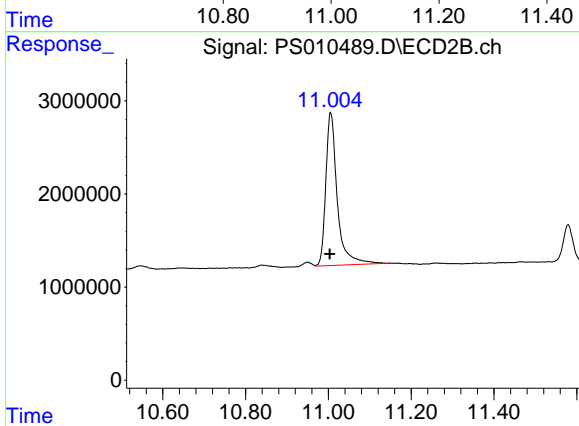
#13 2,4-DB

R.T.: 9.705 min
 Delta R.T.: 0.016 min
 Response: 673603
 Conc: 1.69 ng/ml



#15 Picloram

R.T.: 11.030 min
 Delta R.T.: 0.000 min
 Response: 24845806
 Conc: 5.42 ng/ml



#15 Picloram

R.T.: 11.005 min
 Delta R.T.: 0.002 min
 Response: 31658322
 Conc: 7.50 ng/ml